

Coronavirus disease 2019 (COVID-19)

Situation Report – 28

Data as reported by 17 February 2020*

HIGHLIGHTS

- No new countries reported cases of COVID-19 in the past 24 hours.
- From today, WHO will be reporting all confirmed cases, including both laboratory-confirmed as previously reported, and those reported as clinically diagnosed (currently only applicable to Hubei province, China). From 13 February through 16 February, we reported only laboratory confirmed cases for Hubei province as mentioned in the [situation report published on 13 February](#). The change in reporting is now shown in the figures. This accounts for the apparent large increase in cases compared to prior situation reports.
- Based on the evidence currently available about COVID-19, WHO has developed guidance documents for managing public health events at Points of Entry and mass gatherings. These are posted on [WHO COVID-19 Points of Entry and Mass Gatherings](#) website. See Technical Focus for more details.
- WHO Eastern Mediterranean office has updated information on COVID-19 cases. For more information please see [here](#).

SITUATION IN NUMBERS

total and new cases in last 24 hours

Globally

71 429 confirmed (2162 new)

China

70 635 confirmed (2051 new)
1772 deaths (106 new)[†]

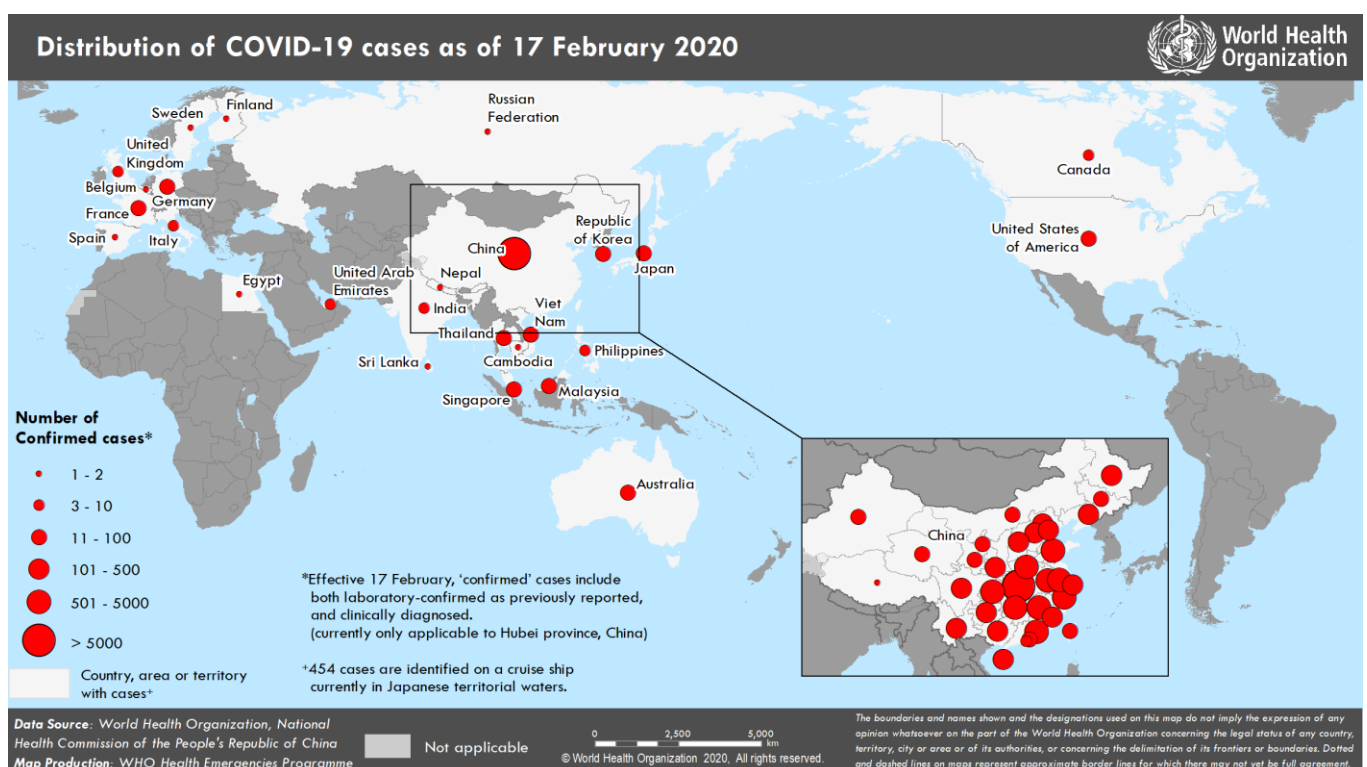
Outside of China

794 confirmed (111 new)
25 countries
3 deaths

WHO RISK ASSESSMENT

China	Very High
Regional Level	High
Global Level	High

Figure 1. Countries, territories or areas with reported confirmed cases of COVID-19, 17 February 2020



*The situation report includes information provided by national authorities as of 10 AM Central European Time

†As reported by China

TECHNICAL FOCUS: Points of Entry (PoE) and mass gatherings:

A Point of Entry (PoE) encompasses ports, airports, ground crossings and means of passage for international entry or exit of travellers, baggage, cargo, containers, conveyances, goods and postal parcels as well as agencies and areas providing services to them on entry or exit (International Health Regulations 2005).

Based on the evidence currently available about COVID-19, WHO has developed guidance documents for managing public health events at PoE and mass gatherings. These are posted on [WHO COVID-19 Points of Entry and Mass Gatherings](#) website.

The materials currently available are:

- Key planning recommendations for Mass Gatherings in the context of the current COVID-19 outbreak. The purpose of this document will be to outline key planning considerations for organizers of mass gatherings in the context of COVID-19 outbreak, to be read in conjunction with WHO's Public Health for Mass Gatherings: Key Considerations.
- Management of ill travellers at Points of Entry in the context of COVID-19 outbreak. This document provides advice on the detection and the management of ill travellers at international ports, airports and ground crossings in the context of the current COVID-19 outbreak. It includes the following measures and should be implemented based on priorities and capacities of each country:
 - Detection of ill travellers;
 - Interview of ill travellers for COVID-19;
 - Reporting of alerts of ill travellers with suspected COVID-19 infection;
 - Isolation, initial case management and referral of ill travellers with suspected COVID-19 infection.
- Handbook for the management of public health events on board ships: This is a generic guidance addressing all public health risks and related maritime rules and regulations to assist States Parties in contingency planning and implementation of health measures onboard ships and at ports.
- Handbook for the Management of Public Health Events in Air Transport: This handbook was developed in collaboration with the International Civil Aviation Organization. It is intended to help competent authorities at airports to implement a risk-based approach to public health events in a consistent manner and assist in determining interventions that are commensurate to the risks.
- An online course for public health preparedness for mass gathering events to support host nations in delivering a safe event.

The material that is in production includes operational considerations for managing COVID-19 cases/outbreak on board cruise ships. This material has been prepared based on the evidence currently available about COVID-19 transmission, by providing operational considerations for public health measures to manage cases, contacts and environment. It is recommended to be used in conjunction with the *Handbook for the management of public health events on board ships*.

SURVEILLANCE

Table 1. Confirmed and suspected cases of COVID-19 acute respiratory disease reported by provinces, regions and cities in China, 17 February 2020

Province/ Region/ City	Population (10,000s)	Daily			Cumulative	
		Confirmed cases*	Suspected cases	Deaths	Confirmed cases	Deaths
Hubei	5917	1933	909	100	58182	1696
Guangdong	11346	6	1	2	1322	4
Henan	9605	15	112	3	1246	16
Zhejiang	5737	4	13	0	1171	0
Hunan	6899	2	14	0	1006	3
Anhui	6324	11	9	0	973	6
Jiangxi	4648	5	2	0	930	1
Jiangsu	8051	9	3	0	626	0
Chongqing	3102	7	63	0	551	5
Shandong	10047	4	21	0	541	2
Sichuan	8341	14	40	0	495	3
Heilongjiang	3773	12	27	0	457	11
Beijing	2154	1	33	0	381	4
Shanghai	2424	3	67	0	331	1
Hebei	7556	1	2	0	301	3
Fujian	3941	3	3	0	290	0
Shaanxi	3864	4	15	0	240	0
Guangxi	4926	1	26	0	238	2
Yunnan	4830	2	22	0	171	0
Hainan	934	0	27	0	162	4
Guizhou	3600	2	2	0	146	1
Shanxi	3718	1	5	0	129	0
Tianjin	1560	2	88	0	124	3
Liaoning	4359	1	45	0	121	1
Gansu	2637	1	0	0	91	2
Jilin	2704	0	9	0	89	1
Xinjiang	2487	2	2	0	73	1
Inner Mongolia	2534	2	3	0	72	0
Ningxia	688	0	0	0	70	0
Hong Kong SAR	745	1	0	0	57	1
Taipei and environs	2359	2	0	1	20	1
Qinghai	603	0	0	0	18	0
Macao SAR	66	0	0	0	10	0
Xizang	344	0	0	0	1	0
Total	142823	2051	1563	106	70635	1772

*'Confirmed' cases include both laboratory confirmed and clinically diagnosed cases (currently only applicable to Hubei province, China)

Table 2. Countries, territories or areas outside China with reported laboratory-confirmed COVID-19 cases and deaths. Data as of 17 February 2020

WHO Region	Country/Territory/Area	Confirmed cases (new)	Total cases with travel history to China (new)	Total cases with possible or confirmed transmission outside of China [†] (new)	Total cases with site of transmission under investigation (new)	Total deaths (new)
Western Pacific Region	Singapore	75 (3)	22 (0)	52 (3)	1 (0)	0 (0)
	Japan	59 (6)	26 (0)	33 (6)	0 (0)	1 (0)
	Republic of Korea	30 (1)	13 (0)	14 [‡] (1)	3 (0)	0 (0)
	Malaysia	22 (0)	17 (0)	4 [§] (0)	1 (0)	0 (0)
	Viet Nam	16 (0)	8 (0)	8 (0)	0 (0)	0 (0)
	Australia	15 (0)	12 (0)	3 (0)	0 (0)	0 (0)
	Philippines	3 (0)	3 (0)	0 (0)	0 (0)	1 (0)
	Cambodia	1 (0)	1 (0)	0 (0)	0 (0)	0 (0)
South-East Asia Region	Thailand	35 (1)	23 (0)	7 (0)	5 (1)	0 (0)
	India	3 (0)	3 (0)	0 (0)	0 (0)	0 (0)
	Nepal	1 (0)	1 (0)	0 (0)	0 (0)	0 (0)
	Sri Lanka	1 (0)	1 (0)	0 (0)	0 (0)	0 (0)
Region of the Americas	United States of America	15 (0)	13 (0)	2 (0)	0 (0)	0 (0)
	Canada	7 (0)	6 (0)	0 (0)	1 (0)	0 (0)
European Region	Germany	16 (0)	2 (0)	14 (0)	0 (0)	0 (0)
	France	12 (0)	5 (0)	7 (0)	0 (0)	1 (0)
	The United Kingdom	9 (0)	2 (0)	7 ^{**} (0)	0 (0)	0 (0)
	Italy	3 (0)	3 (0)	0 (0)	0 (0)	0 (0)
	Russian Federation	2 (0)	2 (0)	0 (0)	0 (0)	0 (0)
	Spain	2 (0)	0 (0)	2 ^{**} (0)	0 (0)	0 (0)
	Belgium	1 (0)	1 (0)	0 (0)	0 (0)	0 (0)
	Finland	1 (0)	1 (0)	0 (0)	0 (0)	0 (0)
Eastern Mediterranean Region	Sweden	1 (0)	1 (0)	0 (0)	0 (0)	0 (0)
	United Arab Emirates	9 (1)	6 (0)	2 (1)	1 (0)	0 (0)
Other	Egypt	1 (0)	0 (0)	1 (0)	0 (0)	0 (0)
	International conveyance (Japan)	454 ^{**} (99)	0 (0)	0 (0)	454 (99)	0 (0)

*Case classifications are based on [WHO case definitions](#) for COVID-19.

[†]Location of transmission is classified based on WHO analysis of available official data and may be subject to reclassification as additional data become available.

[‡]The exposure for 3 cases occurred outside of Republic of Korea.

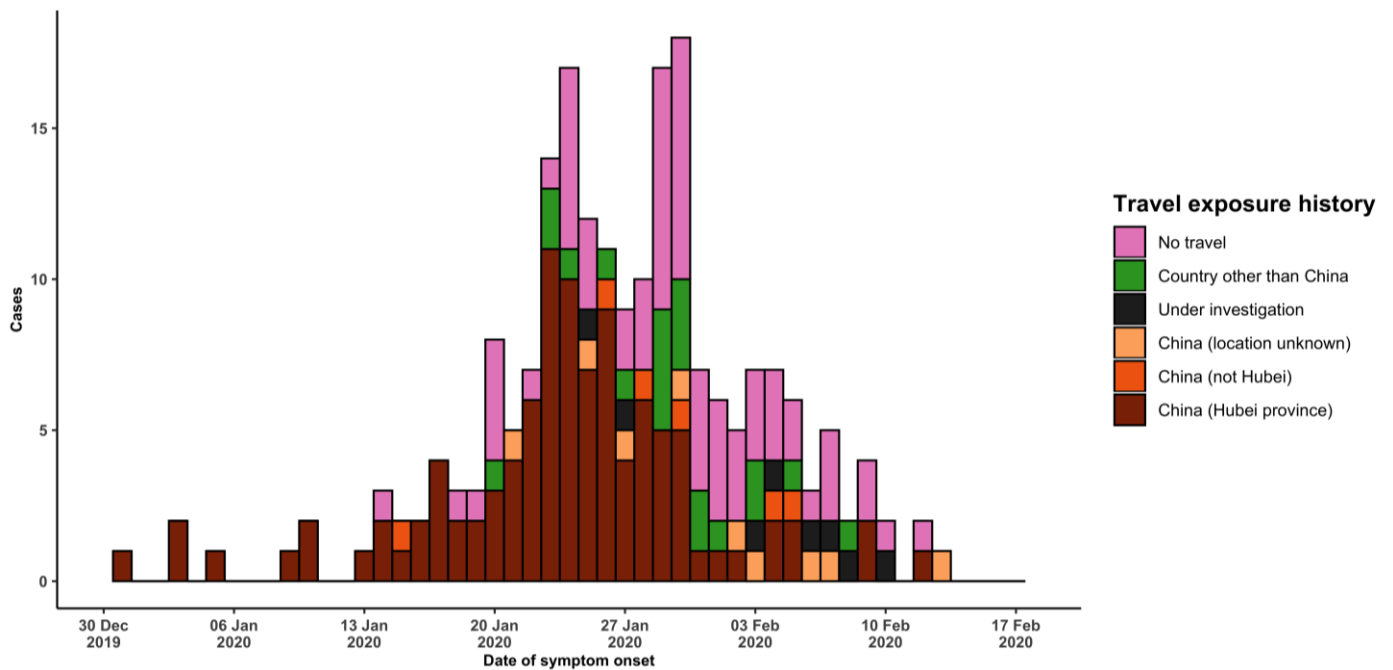
[§]The exposure for 1 case occurred outside of Malaysia. One patient also had travel history to China, but exposure likely occurred after return to Malaysia.

^{**}The exposure for 6 cases occurred outside of the United Kingdom.

^{**}The exposure for 2 cases occurred outside of Spain.

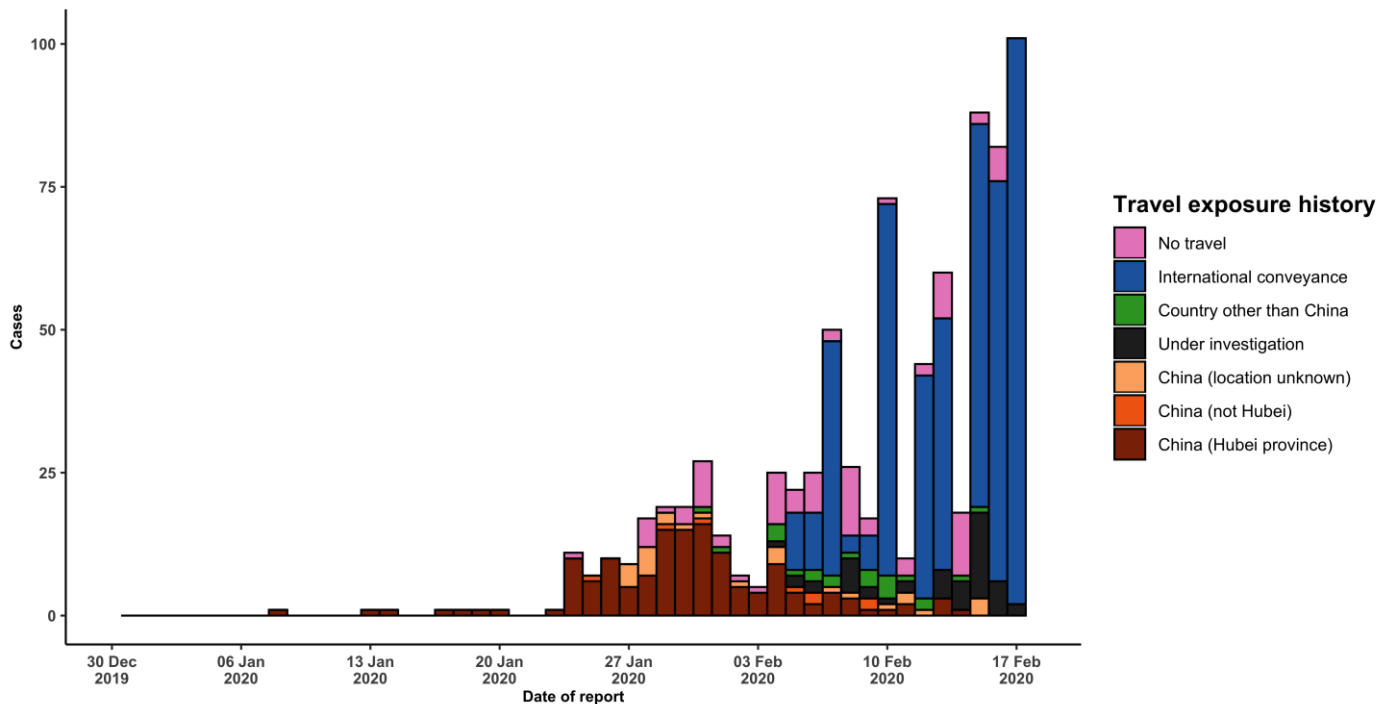
^{**}Cases identified on a cruise ship currently in Japanese territorial waters.

Figure 2. Epidemic curve of COVID-19 cases (n=210) identified outside of China, by date of onset of symptoms and travel history, 17 February 2020



Note for figure 2: Of the 794 cases reported outside China, 26 were detected while apparently asymptomatic. For the remaining 768 cases, information on date of onset is available only for the 210 cases presented in the epidemiologic curve.

Figure 3. Epidemic curve of COVID-19 cases (n=794) identified outside of China, by date of reporting and travel history, 17 February 2020



STRATEGIC OBJECTIVES

WHO's strategic objectives for this response are to:

- Limit human-to-human transmission including reducing secondary infections among close contacts and health care workers, preventing transmission amplification events, and preventing further international spread from China*;
- Identify, isolate and care for patients early, including providing optimized care for infected patients;
- Identify and reduce transmission from the animal source;
- Address crucial unknowns regarding clinical severity, extent of transmission and infection, treatment options, and accelerate the development of diagnostics, therapeutics and vaccines;
- Communicate critical risk and event information to all communities and counter misinformation;
- Minimize social and economic impact through multisectoral partnerships.

*This can be achieved through a combination of public health measures, such as rapid identification, diagnosis and management of the cases, identification and follow up of the contacts, infection prevention and control in health care settings, implementation of health measures for travelers, awareness-raising in the population and risk communication.

PREPAREDNESS AND RESPONSE

- To view all technical guidance documents regarding COVID-19, please go to [this webpage](#).
- WHO is working closely with International Air Transport Association (IATA) and have jointly developed a guidance document to provide advice to cabin crew and airport workers, based on country queries. The guidance can be found on the [IATA webpage](#).
- WHO has developed a protocol for the investigation of early cases (the "[First Few X \(FFX\) Cases and contact investigation protocol for 2019-novel coronavirus \(2019-nCoV\) infection](#)"). The protocol is designed to gain an early understanding of the key clinical, epidemiological and virological characteristics of the first cases of COVID-19 infection detected in any individual country, to inform the development and updating of public health guidance to manage cases and reduce potential spread and impact of infection.
- WHO has been in regular and direct contact with Member States where cases have been reported. WHO is also informing other countries about the situation and providing support as requested.
- WHO has developed interim guidance for [laboratory diagnosis, advice on the use of masks during home care and in health care settings in the context of the novel coronavirus \(2019-nCoV\) outbreak, clinical management, infection prevention and control in health care settings, home care for patients with suspected novel coronavirus, risk communication and community engagement](#) and [Global Surveillance for human infection with novel coronavirus \(2019-nCoV\)](#).
- WHO has prepared [disease commodity package](#) that includes an essential list of biomedical equipment, medicines and supplies necessary to care for patients with 2019-nCoV.
- WHO has provided recommendations to reduce risk of [transmission from animals to humans](#).
- WHO has published an [updated advice for international traffic in relation to the outbreak of the novel coronavirus 2019-nCoV](#).
- WHO has activated of R&D blueprint to accelerate diagnostics, vaccines, and therapeutics.
- WHO has developed an [online course](#) to provide general introduction to emerging respiratory viruses, including novel coronaviruses.
- WHO is providing guidance on early investigations, which are critical to carry out early in an outbreak of a new virus. The data collected from the protocols can be used to refine recommendations for surveillance and case definitions, to characterize the key epidemiological transmission features of COVID-19, help understand spread, severity, spectrum of disease, impact on the community and to inform operational models for implementation of

countermeasures such as case isolation, contact tracing and isolation. Several protocols are available here:

<https://www.who.int/emergencies/diseases/novel-coronavirus-2019/technical-guidance/early-investigations>

- WHO is working with its networks of researchers and other experts to coordinate global work on surveillance, epidemiology, modelling, diagnostics, clinical care and treatment, and other ways to identify, manage the disease and limit onward transmission. WHO has issued interim guidance for countries, which are updated regularly.
- WHO is working with global expert networks and partnerships for laboratory, infection prevention and control, clinical management and mathematical modelling.

RECOMMENDATIONS AND ADVICE FOR THE PUBLIC

During previous outbreaks due to other coronavirus (Middle-East Respiratory Syndrome (MERS) and Severe Acute Respiratory Syndrome (SARS), human-to-human transmission occurred through droplets, contact and fomites, suggesting that the transmission mode of the COVID-19 can be similar. The basic principles to reduce the general risk of transmission of acute respiratory infections include the following:

- Avoiding close contact with people suffering from acute respiratory infections.
- Frequent hand-washing, especially after direct contact with ill people or their environment.
- Avoiding unprotected contact with farm or wild animals.
- People with symptoms of acute respiratory infection should practice cough etiquette (maintain distance, cover coughs and sneezes with disposable tissues or clothing, and wash hands).
- Within health care facilities, enhance standard infection prevention and control practices in hospitals, especially in emergency departments.

WHO does not recommend any specific health measures for travellers. In case of symptoms suggestive of respiratory illness either during or after travel, travellers are encouraged to seek medical attention and share their travel history with their health care provider.