



Government of Nepal Ministry of Health and Population

SitRep

#150

Health Sector Response to COVID-19

Wednesday | 08 July 2020 (24 Ashad 2077)

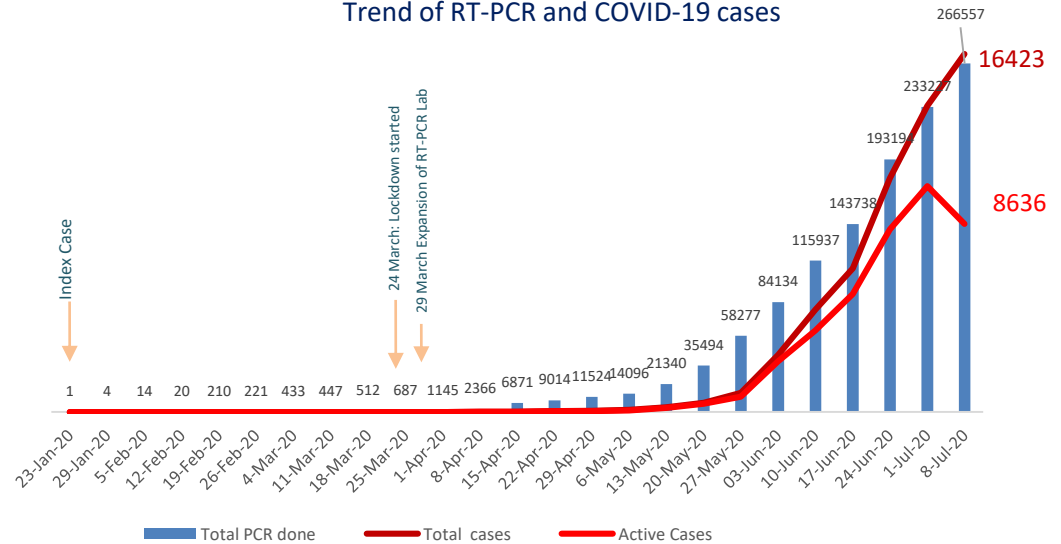
RT-PCR Test	RT-PCR Test / Million	Total Positive Cases	Confirmed cases in isolation	Recovered	Recovery Rate	Deaths	People in Quarantine
266557	9146	16423	8636	7752	47.2%	35	25040

Key Activities:

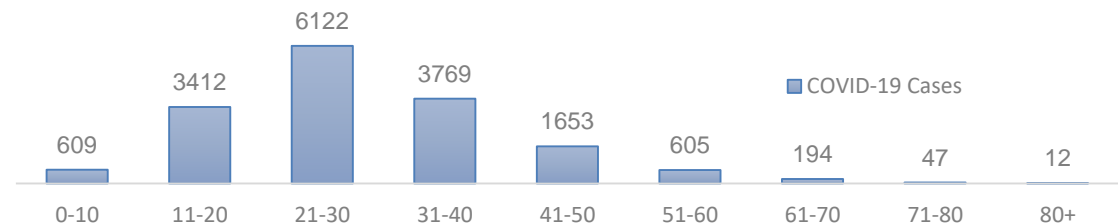
- [Health standards for isolation of COVID-19 cases, 2077](#) and [Directives for amendment to the existing directives on reimbursement to hospitals treating COVID-19 cases, 2077](#) have been endorsed by Office of the Prime Minister and Council of Ministers

[\(Click here for more information\)](#)

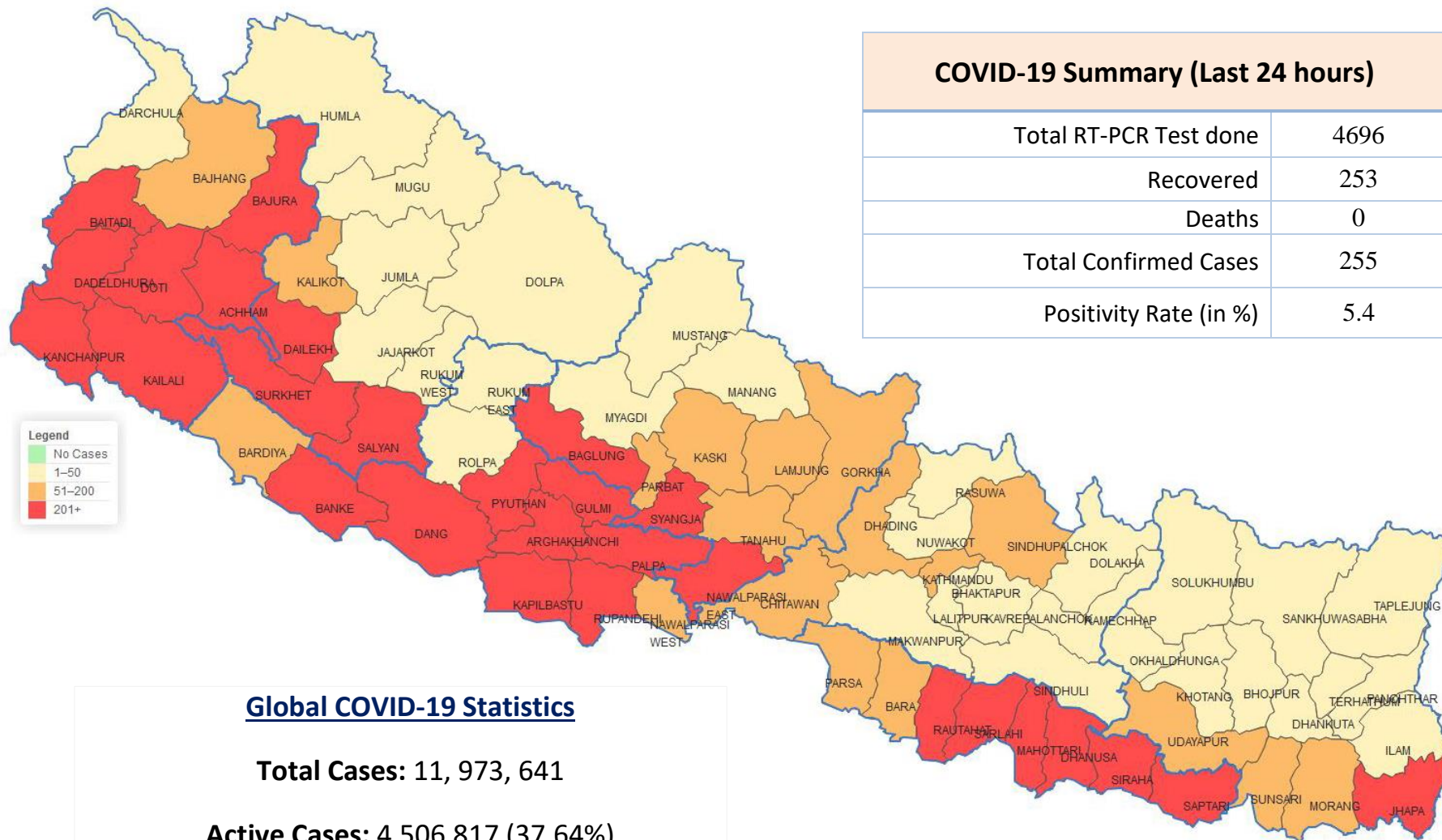
Trend of RT-PCR and COVID-19 cases



Age group wise distribution of COVID-19 Cases



District wise distribution of COVID-19 cases



COVID-19 Summary (Last 24 hours)	
Total RT-PCR Test done	4696
Recovered	253
Deaths	0
Total Confirmed Cases	255
Positivity Rate (in %)	5.4

Legend	
■	No Cases
■	1-50
■	51-200
■	201+

Global COVID-19 Statistics

Total Cases: 11, 973, 641

Active Cases: 4,506,817 (37.64%)

Recovered/ Discharged: 6,919,704 (57.79%)

Deaths: 547,120 (4.57%)

as of 08-07-2020, 15:00 hrs

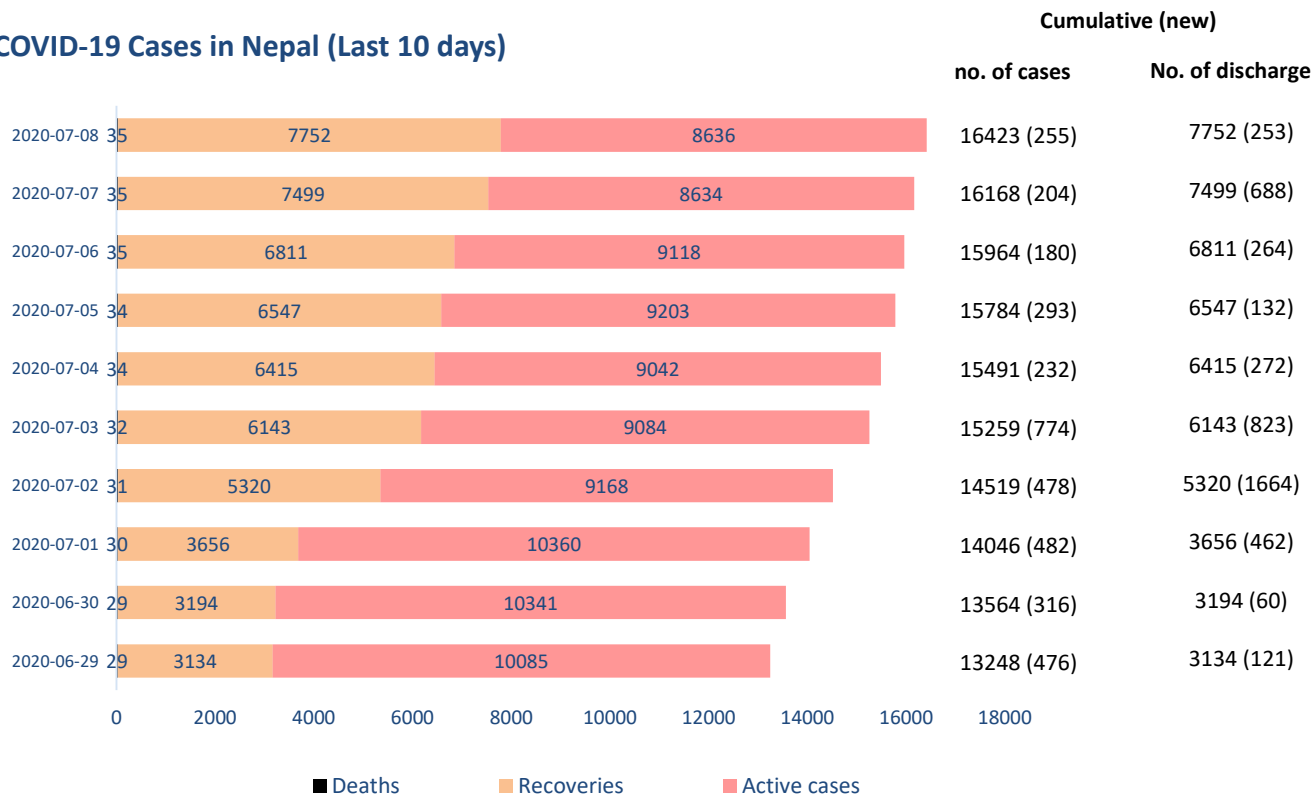
COVID-19 Cases details (Cumulative):

Positivity Rate: 6.2%

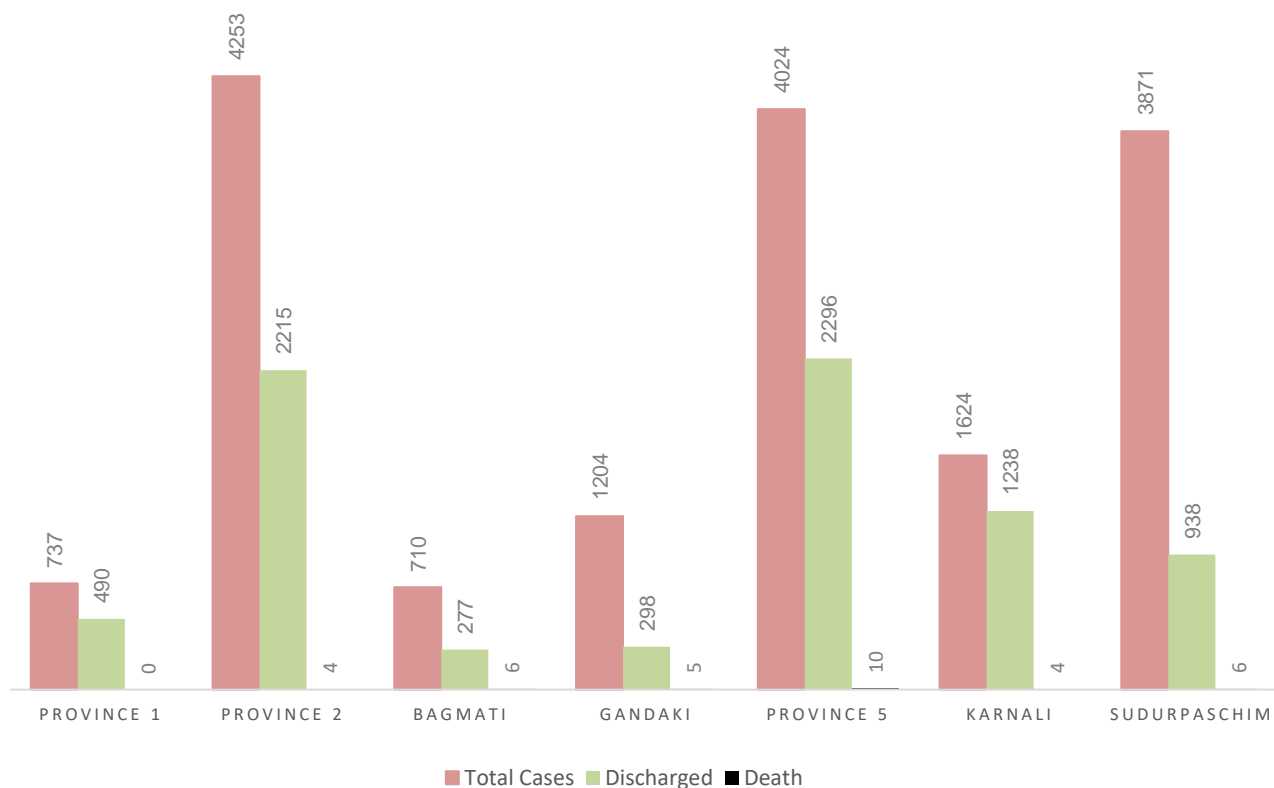
Case Fatality Rate: 0.2%

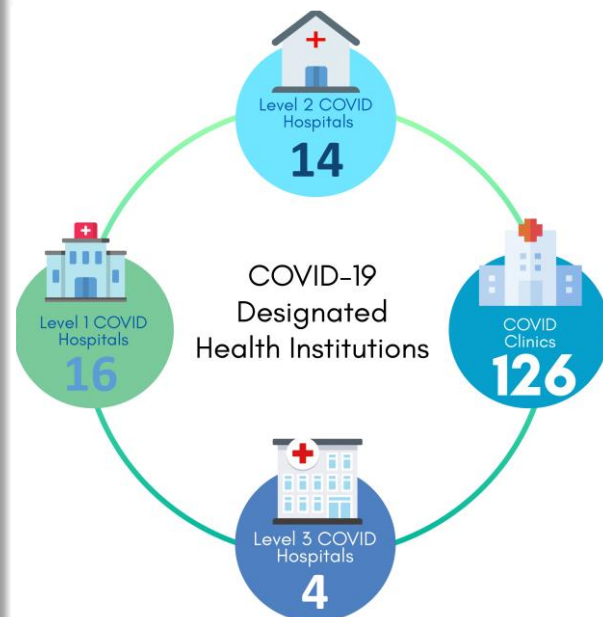
Total Death/million: 1

COVID-19 Cases in Nepal (Last 10 days)

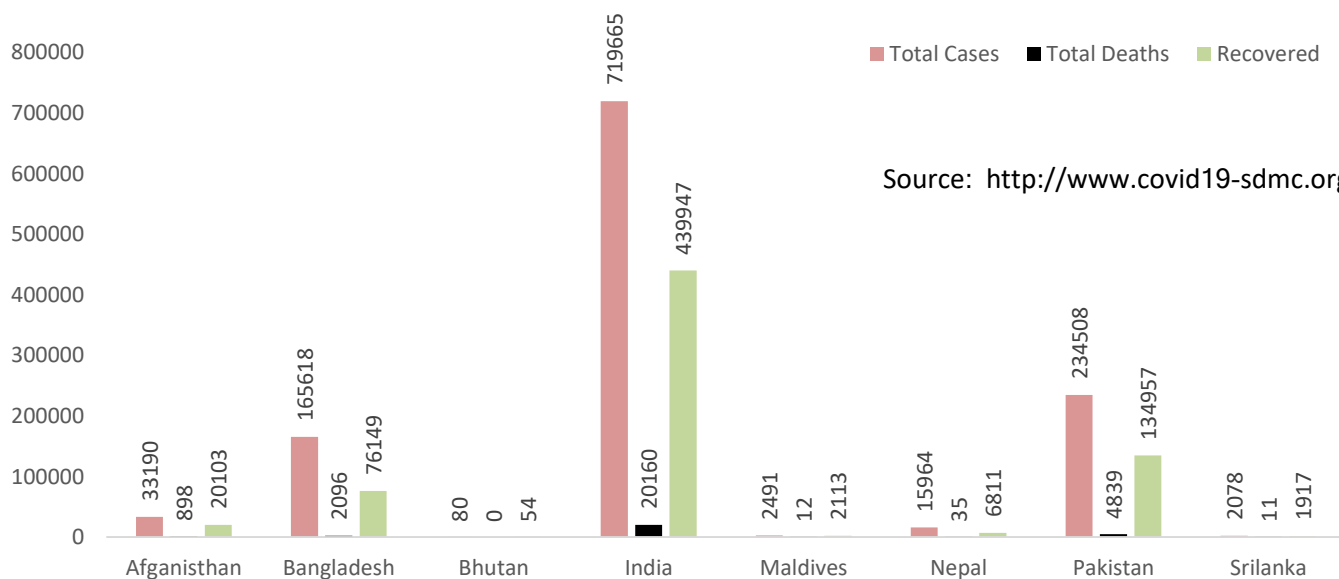


PROVINCE WISE DISTRIBUTION OF COVID-19 CASES, DISCHARGED AND ACTIVE CASES





COVID-19 Cases in the SAARC Member States



Per Million	Afghanistan	Bangladesh	Bhutan	India	Maldives	Nepal	Pakistan	Srilanka
Test	1990	5416	33856	7588	106555	9146	6640	5359
Case	863	1045	104	540	4626	555	1075	97
Death	24	13	0	15	22	1	22	0.5

RT-PCR Tests done in different laboratories

#	Laboratory	Cumulative Tests	Positive (In 24 hrs.)
1.	National Public Health Laboratory, Teku	72331	68
2.	B. P. Koirala Institute of Health Sciences, Dharan	10794	6
3.	Koshi Hospital, Biratnagar	12593	5
4.	Provincial Public Health Laboratory/ Avian Disease Investigation Laboratory, Biratnagar	9638	4
5.	Gajendra Narayan Singh Hospital, Rajbiraj, Saptari	2014	6
6.	Provincial Public Health Laboratory, Janakpur	4500	
7.	Narayani Hospital, Birgunj	8763	1
8.	Shukraraj Tropical and Infectious Disease Hospital, Teku	9096	
9.	Bharatpur Hospital COVID-19 Diagnostic Laboratory/ National Avian Disease Investigation Laboratory, Chitwan	8432	5
10.	Vector Borne Disease Research and Training Centre, Hetauda	8900	34
11.	Kathmandu University Teaching Hospital, Dhulikhel	8075	
12.	Patan Hospital, Lalitpur	5196	32
13.	NAMS, Bir Hospital, Kathmandu	4696	
14.	Tribhuvan University Teaching Hospital (TUTH)	4681	2
15.	Pokhara Academy of Health Science, Pokhara	10053	13
16.	Provincial Tuberculosis Control Center, Pokhara/ Provincial Public Health Laboratory, Pokhara	5259	1
17.	Provincial Public Health Laboratory, Rupandehi	8805	9
18.	Bheri Hospital, Nepalgunj, Banke	14159	10
19.	Rapti Academy of Health Science, Dang	14908	
20.	Surkhet Provincial Hospital/ Avian Disease Investigation Laboratory, Surkhet	14965	17
21.	Karnali Academy of Health Science, Jumla	16551	3
22.	COVID-19 Testing Laboratory, Dailekh	502	1
23.	Chaurjahari Municipality PCR Laboratory, Rukum (East)	231	5
24.	Dadeldhura Hospital Laboratory, Dadeldhura	226	2
25.	Seti Provincial Hospital/ Avian Disease Investigation Laboratory, Dhangadi	11189	31
Total		266557	255

Information and Communication

Two Call Centers 1115 (from 6 am to 10 pm) and 1133 (24 hours) have been operationalized since 30th Falgun, 2076 (13 March 2020) to provide counselling service regarding COVID-19 prevention and treatment. People are requested to call these Call Centers for any queries related to COVID-19.

Total number of service users: **970**

Hotline number for health institutions and health workers: 9851255839

Additional Information: Please click [here](#) for all the Standards and Technical Guidelines regarding COVID-19

COVID-19 Hotline Service	1133 (24/7) 1115 (6 AM to 10 PM) 9851255837, 9851255834 (8 AM to 8 PM)
Web Portal	https://covid19.moHP.gov.np/ https://heoc.moHP.gov.np http://www.edcd.gov.np/
Official Viber Community	Search "MoHP Nepal COVID-19" on Viber to join the community
Social Media	fb.com/moHPnep fb.com/HEOCMoHP fb.com/edcdnepal
Mobile Application	Search "Hamro Swasthya" on Google Play Store and Apple Store