



Health Sector Response to Coronavirus Disease (COVID-19)

Friday | 02 Falgun 2076 (14 February 2020)

On 31 December 2019, the first case of COVID-19 was reported from Hubei Province of China. This disease has spread over 24 countries outside China. As reported case fatality rate of the novel coronavirus infection compared to previous Severe Acute Respiratory Syndrome (SARS) & Middle East Respiratory Syndrome (MERS) is very low.

Current Global status on COVID-19

Global	Confirmed cases: 46997 Deaths: 1369
China	Confirmed cases: 46550 Deaths: 1368 Countries: 24
Outside China	Confirmed cases: 447 Deaths: 1 (Philippines)

No new countries reported cases of COVID-19 in the past 24 hours.
Updated as of 13 February 2020, Extracted from WHO's Situation Report

Public Health Emergency of International Concern (PHEIC) has been declared on 30 January 2020; however, restriction in international traffic and trade is not recommended.

Current status on COVID-19, Nepal (*as of 14 Feb 2020, 16:00)

Total Samples Tested: 24	Tested Negative: 23	Tested Positive: 1
---------------------------------	----------------------------	---------------------------

The First COVID-19 Positive Case in Nepal

The only COVID-19 confirmed case of Nepal is a 31-year-old male who studies in Wuhan. He traveled to Kathmandu from Wuhan. He had non-productive cough while he was in Wuhan and was aware of the new infection that was spreading there. On 13 January 2020, after 10 days of his initial symptoms, he went for check-up at Shukraraj Tropical and Infectious Disease Hospital, Teku. Knowing his travel history the doctor kept him in the hospital for treatment and was well taken care of. His throat swab was collected at the hospital and was sent to WHO Reference Laboratory in Hong Kong for laboratory investigation. The result tested positive for COVID-19 on real-time RT-PCR assays on 23 January 2020. He was tested again for COVID-19 on 29 and 31 January 2020 at National Public Health Laboratory, Teku and both the results tested negative. One month has passed since then and is healthy. His family and contacts have not developed any symptoms suggestive of COVID-19 so far. He is expecting to return to his studies after the situation gets normal in Wuhan.

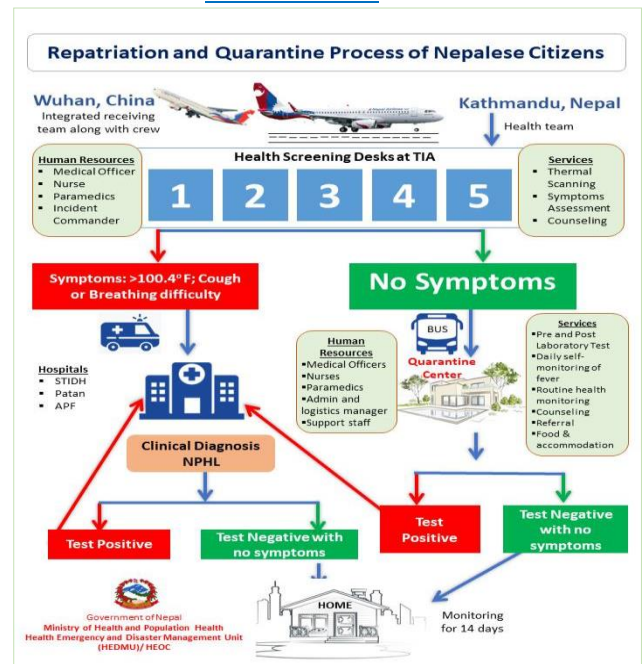
Key National Response

- **Hotline Service:** Public concerns regarding COVID-19 are being addressed through 3 hotlines (9851255839, 9851255837, 9851255834) from 8:00 to 20:00 hrs. Average number of calls received per day is 12. Sign and symptoms of COVID-19, precautions to be taken, precaution to be taken during travel and the appropriate place to go for medical consultations were the common concerns express so far.
- **Screening and Surveillance:** Temperature of travelers coming from or via China and Thailand are being individually scanned. People reporting fever, cough or

shortness of breath at are further investigated, treated, counselled and monitored on a regular basis.

Repatriation and Quarantine:

- o Orientation has been provided to all staff involved
- o Simulation exercise has been conducted.
- o Resource mapping of identified Hub & Satellite Hospitals Network has been done for responding the COVID-19.
- o Preparation has been completed for repatriation, health screening and quarantine Process. For details Click [Press Release](#)



- **Sindhupalchowk Update:** Situation is getting normal. The collected 9 samples are under investigation.

Key response and preparedness from Government: -

Health desk are operational at the main land borders crossing with China, India and also at Airports; Hospitals have prepared the Hospital Disaster Preparedness and Response Plan and isolation facilities.

Resources:

Kindly click the link below for detail resources and information.

2019-nCoV IEC	Press Release MoHP	Technical Guidance
HUB Hospitals	Audio Visual PSAs	Contacts
HEDMU/HEOC Phone: 01-4250845, Fax: 01-4250842, E-mail: heocmohp@gmail.com, Web: heoc.mohp.gov.np, fb: fb.com/HEOC		EDCD Phone: 01-4255796, Fax: 01-4100266, E-mail: ewarsedcd@gmail.com, Web: edcd.gov.np, fb: fb.com/edcdnepal