



Government of Nepal Ministry of Health and Population

SitRep

#186

Health Sector Response to COVID-19

Thursday | 13 August 2020 (29 Shrawan 2077)



Key Activities:

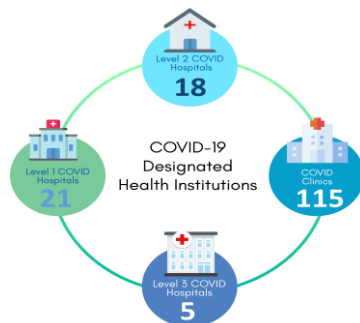
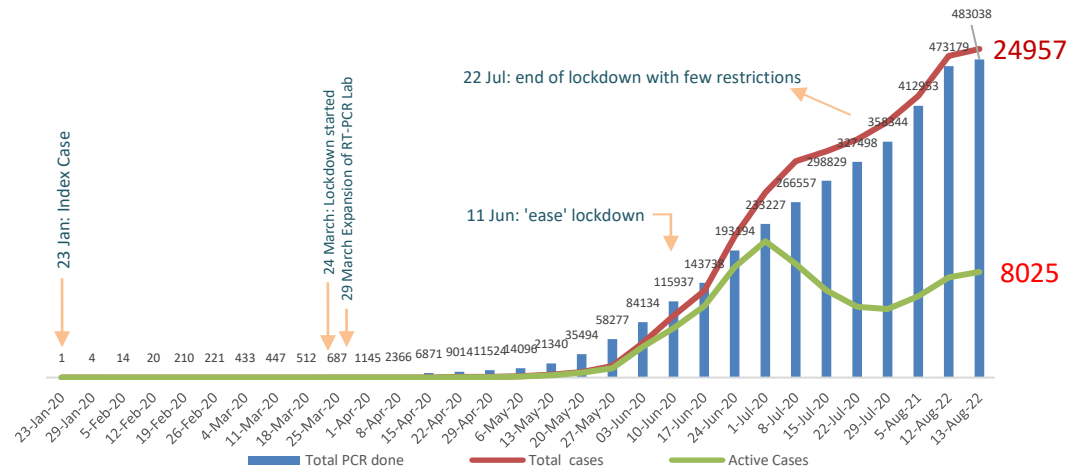
- Ministry of Health and Population has revised guidelines for the management of health workers and other staff directly involved in the treatment of COVID-19 patients.

[\(Click here for additional information.\)](#)

COVID-19 Summary (Last 24 hours)

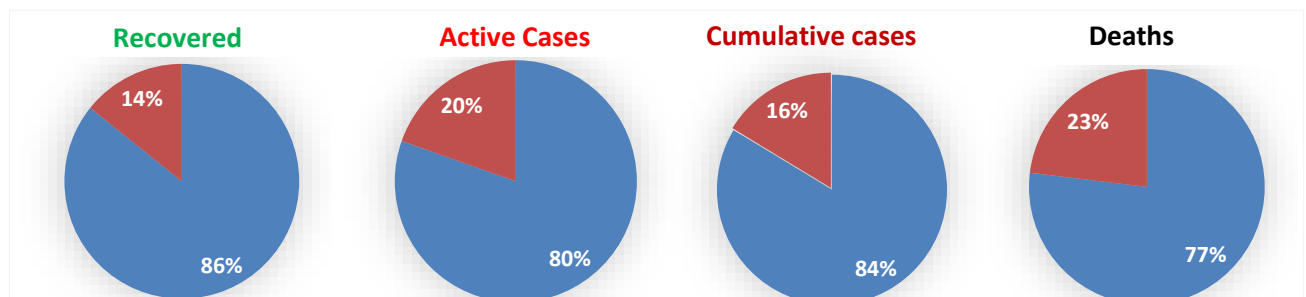
Total RT-PCR Test done	9859
Recovered	109
Deaths	4
Confirmed Cases	525

Trend of RT-PCR and COVID-19 cases

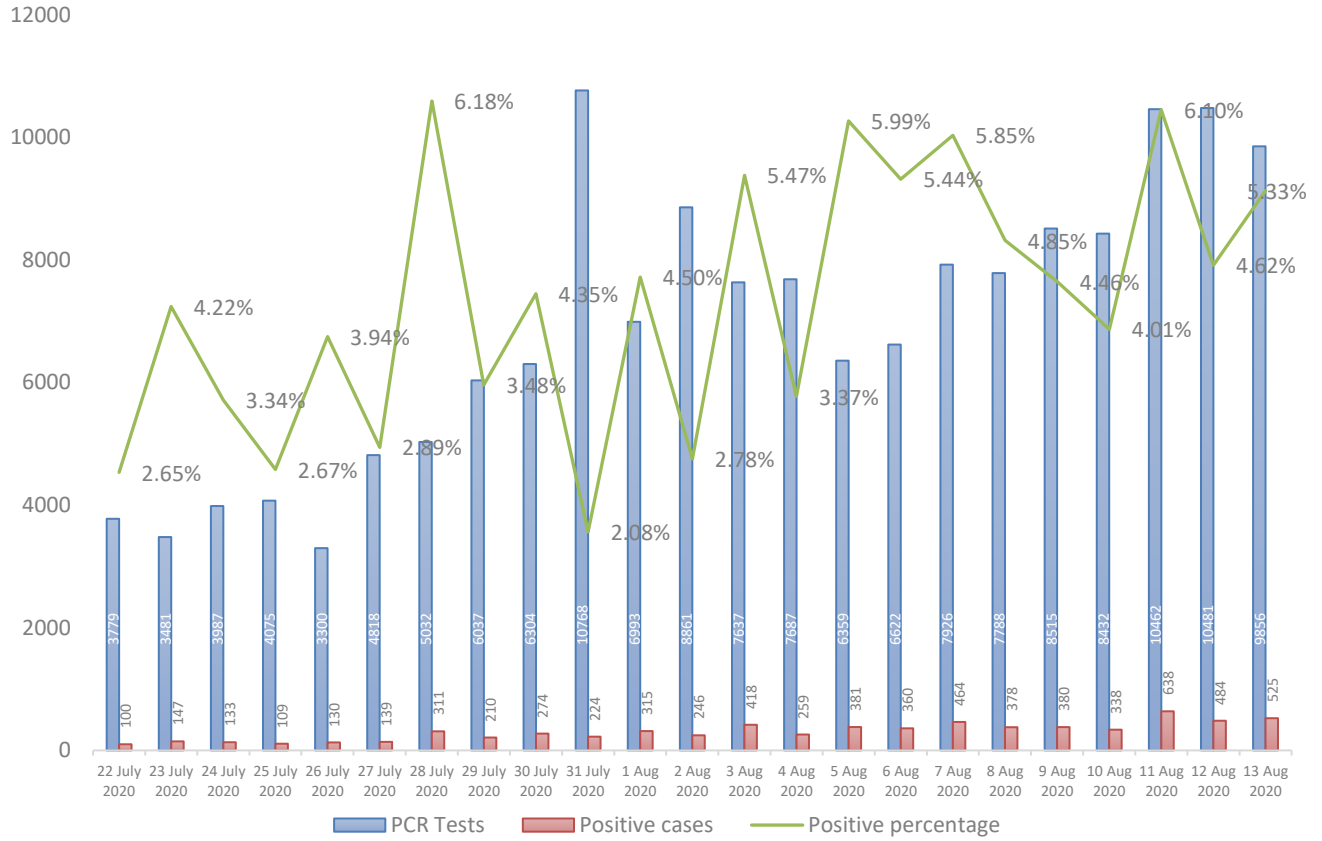


[Click here for more information](#)

Sex wise distribution of COVID-19 recovered, active, cumulative and death cases



Trend of RT-PCR Positivity Rate after end of lockdown with few restrictions

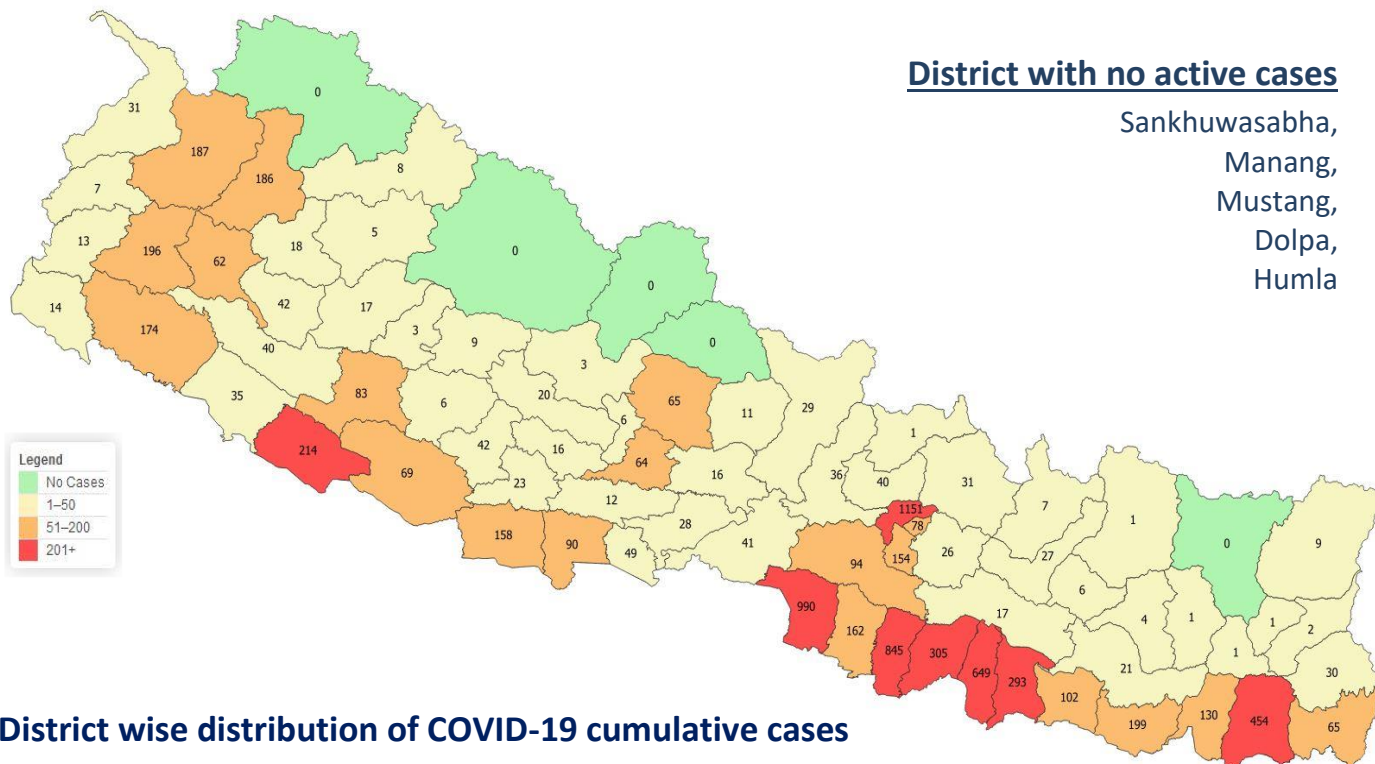


PROVINCE WISE DISTRIBUTION OF COVID-19 CASES, DISCHARGED AND ACTIVE CASES

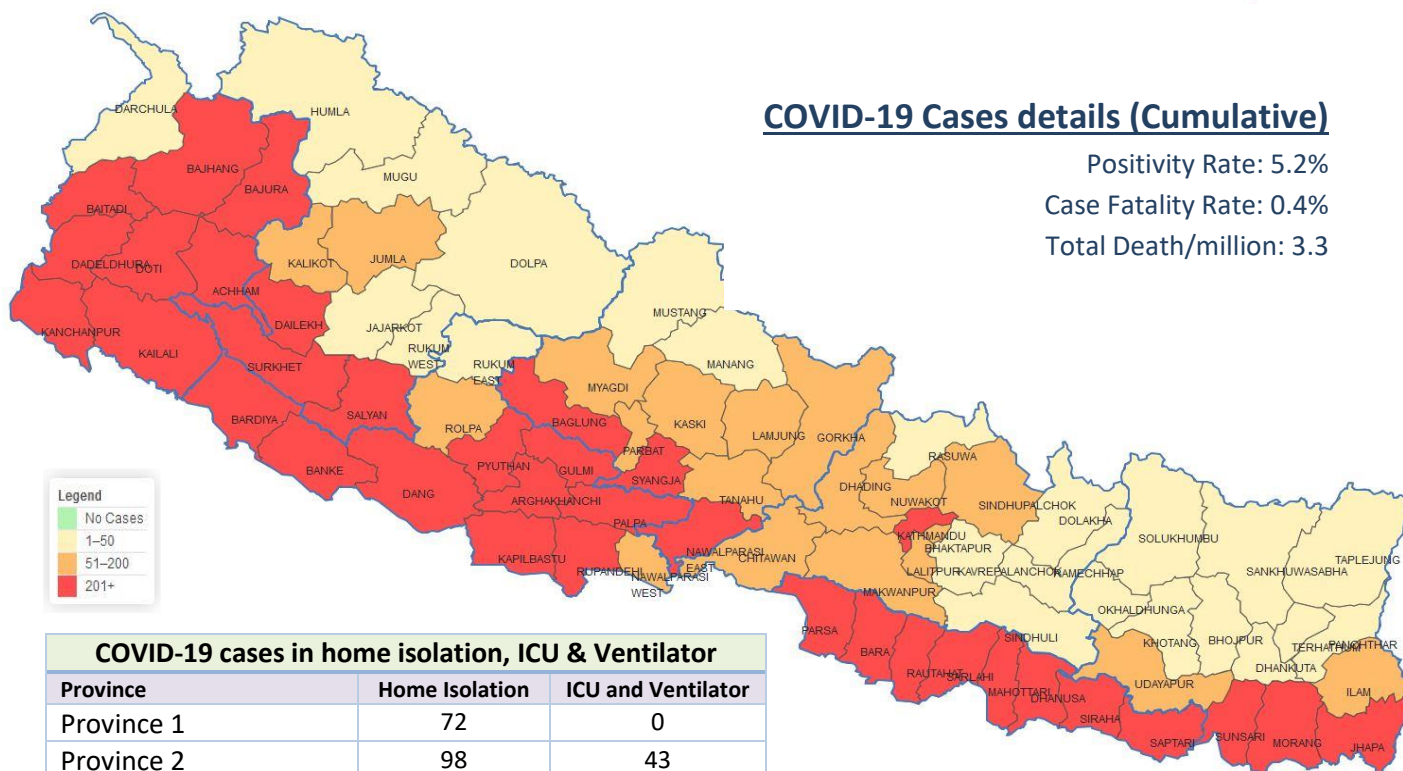


*Includes one death of a Chinese citizen

District wise distribution of COVID-19 active cases



District wise distribution of COVID-19 cumulative cases



COVID-19 cases in home isolation, ICU & Ventilator		
Province	Home Isolation	ICU and Ventilator
Province 1	72	0
Province 2	98	43
Bagmati Province	75	38+5*
Gandaki Province	0	1
Province 5	81	9
Karnali Province	8	0
Sudurpaschim Province	107	0
Total	441	96

as of 13-08-2020, 2:00 PM
 *In Ventilator

RT-PCR Tests done in different laboratories

#	Laboratory	Cumulative Tests	Positive (In 24 hrs.)
1.	National Public Health Laboratory, Teku	110366	57
2.	B. P. Koirala Institute of Health Sciences, Dharan	22108	23
3.	Koshi Hospital, Biratnagar	23709	40
4.	Provincial Public Health Laboratory/ Avian Disease Investigation Laboratory, Biratnagar	21369	52
5.	Gajendra Narayan Singh Hospital, Rajbiraj, Saptari	7068	32
6.	Provincial Public Health Laboratory, Janakpur	8494	44
7.	Narayani Hospital, Birgunj	19019	37
8.	Shukraraj Tropical and Infectious Disease Hospital, Teku	17239	3
9.	Bharatpur Hospital COVID-19 Diagnostic Laboratory/ National Avian Disease Investigation Laboratory, Chitwan	13390	7
10.	Vector Borne Disease Research and Training Centre, Hetauda	15529	38
11.	Kathmandu University Teaching Hospital, Dhulikhel	11224	13
12.	Patan Hospital, Lalitpur	9678	
13.	NAMS, Bir Hospital, Kathmandu	10829	6
14.	Tribhuvan University Teaching Hospital (TUTH)	9634	4
15.	Nepal Police Hospital Laboratory, Kathmandu	1792	49
16.	Shree Birendra Hospital, Chhauni	1470	
17.	Star Hospital Laboratory, Sanepa	6392	31
18.	Nepal Korea Friendship Municipality Hospital, Bhaktapur	4038	11
19.	Central Diagnostic Laboratory and Research Center, Kamalpokhari	444	
20.	BIDH Lab, Lalitpur	2029	4
21.	Sooriya Health Care Pvt. Ltd	126	1
22.	KMC Hospital, Kathmandu	372	
23.	HAMS Hospital, Kathmandu	1121	12
24.	B & B Hospital, Lalitpur	187	
25.	Pokhara Academy of Health Science, Pokhara	14485	
26.	Provincial Tuberculosis Control Center, Pokhara/ Provincial Public Health Laboratory, Pokhara	16070	6
27.	Provincial Public Health Laboratory, Rupandehi	16370	22
28.	Bheri Hospital, Nepalgunj, Banke	26354	13
29.	Lumbini Provincial Hospital	3758	8
30.	National Path Lab & Research Center Pvt. Ltd., Butwal	413	8
31.	Rapti Academy of Health Science, Dang	15658	2
32.	Bageswari Diagnostic and Polyclinic Center (P.) Ltd., Nepalgunj	126	
33.	Surkhet Provincial Hospital/ Avian Disease Investigation Laboratory, Surkhet	21217	
34.	Karnali Academy of Health Science, Jumla	19810	
35.	COVID-19 Testing Laboratory, Dailekh	2804	
36.	Chaurjahari Municipality PCR Laboratory, Rukum (East)	2447	
37.	Dadeldhura Hospital Laboratory, Dadeldhura	5108	2
38.	Seti Provincial Hospital/ Avian Disease Investigation Laboratory, Dhangadi	20791	
Total		483038	525

Global COVID-19 Statistics

20,827,637

Total Cases

6,356,575

(30.5%)

Active Cases

747,584

(3.6%)

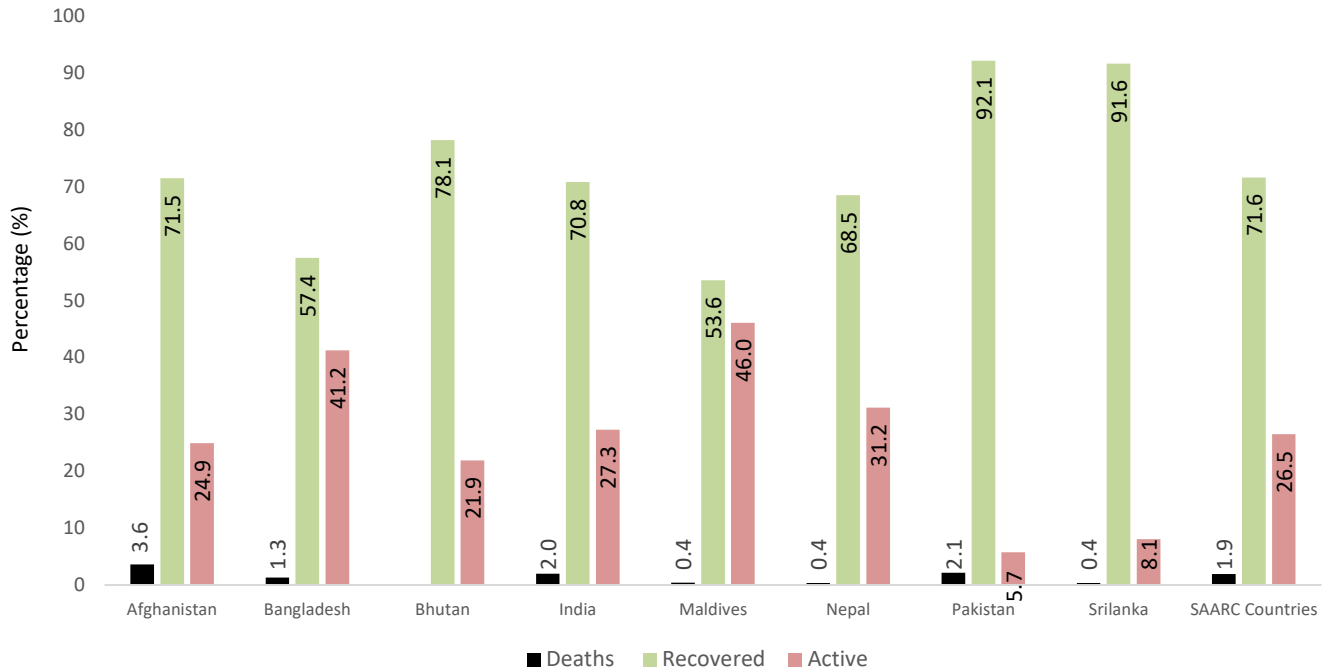
Deaths

13,723,478

(65.9%)

Recovered

COVID-19 cases in the SAARC Member States



Source: <http://www.covid19-sdmc.org/>

Information and Communication

Two Call Centers 1115 (from 6 am to 10 pm) and 1133 (24 hours) have been operationalized since 30th Falgun, 2076 (13 March 2020) to provide counselling service regarding COVID-19 prevention and treatment. People are requested to call these Call Centers for any queries related to COVID-19.

Total number of service users: **1000**

Additional Information: Please click [here](#) for all the Standards and Technical Guidelines regarding COVID-19

Hotline number for health institutions and health workers: 9851255839

COVID-19 Hotline Service	1133 (24/7) 1115 (6 AM to 10 PM) 9851255837, 9851255834 (8 AM to 8 PM)
Web Portal	https://covid19.mohp.gov.np/ https://heoc.mohp.gov.np http://www.edcd.gov.np/
Official Viber Community	Search "MoHP Nepal COVID-19" on Viber to join the community
Social Media	fb.com/mohpnep fb.com/HEOCMoHP fb.com/edcdnepal
Mobile Application	Search "Hamro Swasthya" on Google Play Store and Apple Store