



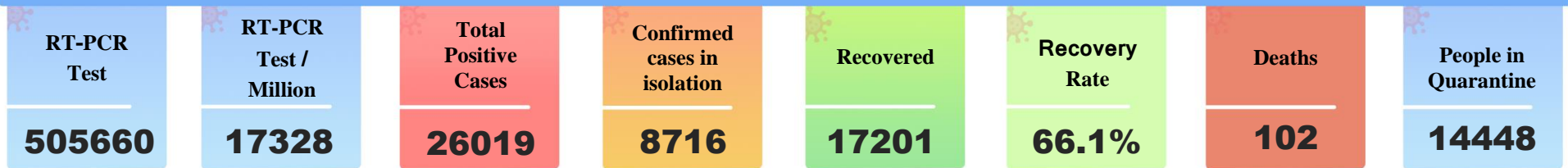
Government of Nepal Ministry of Health and Population

SitRep

#188

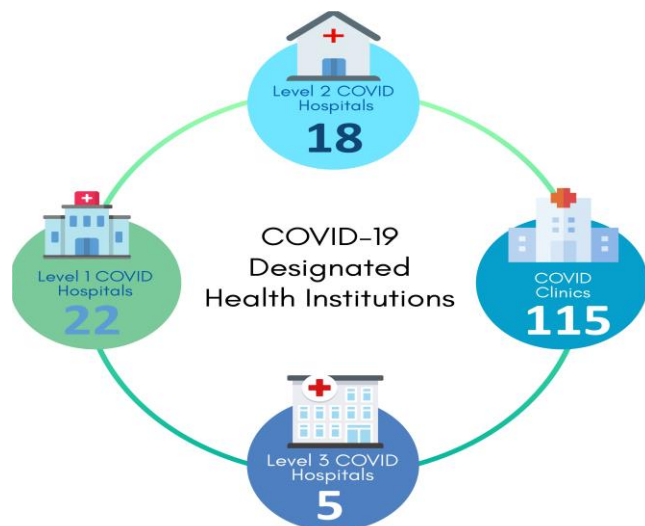
Health Sector Response to COVID-19

Saturday | 15 August 2020 (31 Shrawan 2077)



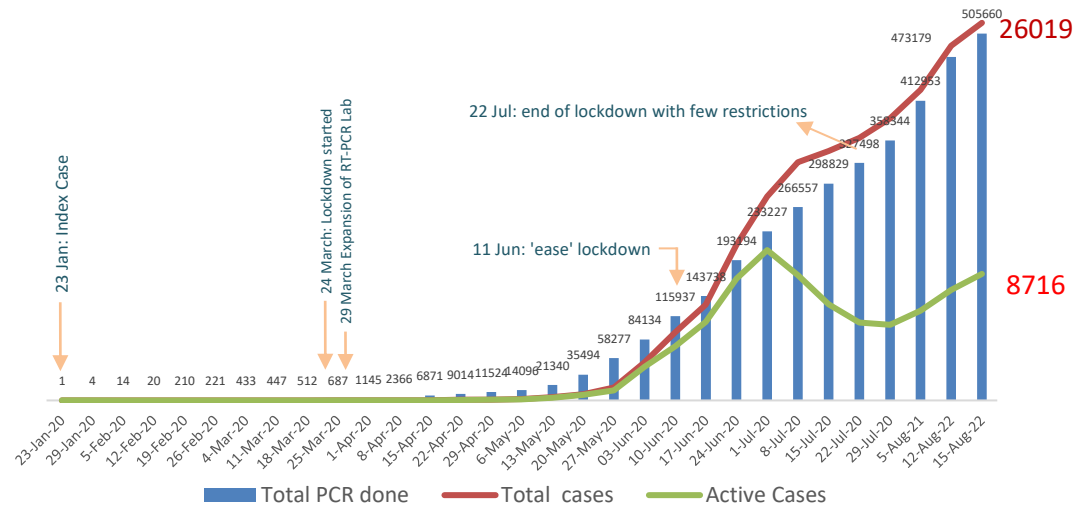
COVID-19 Summary (Last 24 hours)

Total RT-PCR Test done	11047
Recovered	124
Deaths	3
Confirmed Cases	468

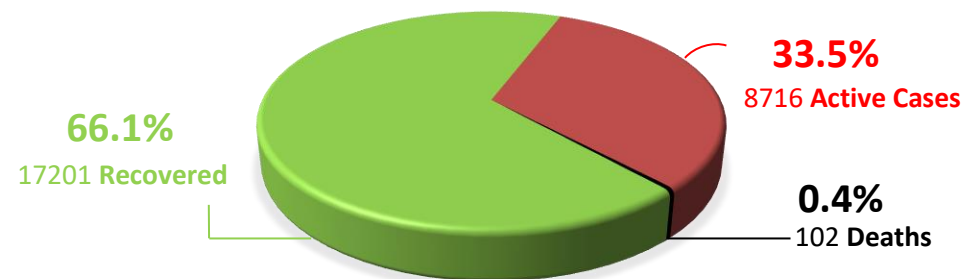


[Click here for more information](#)

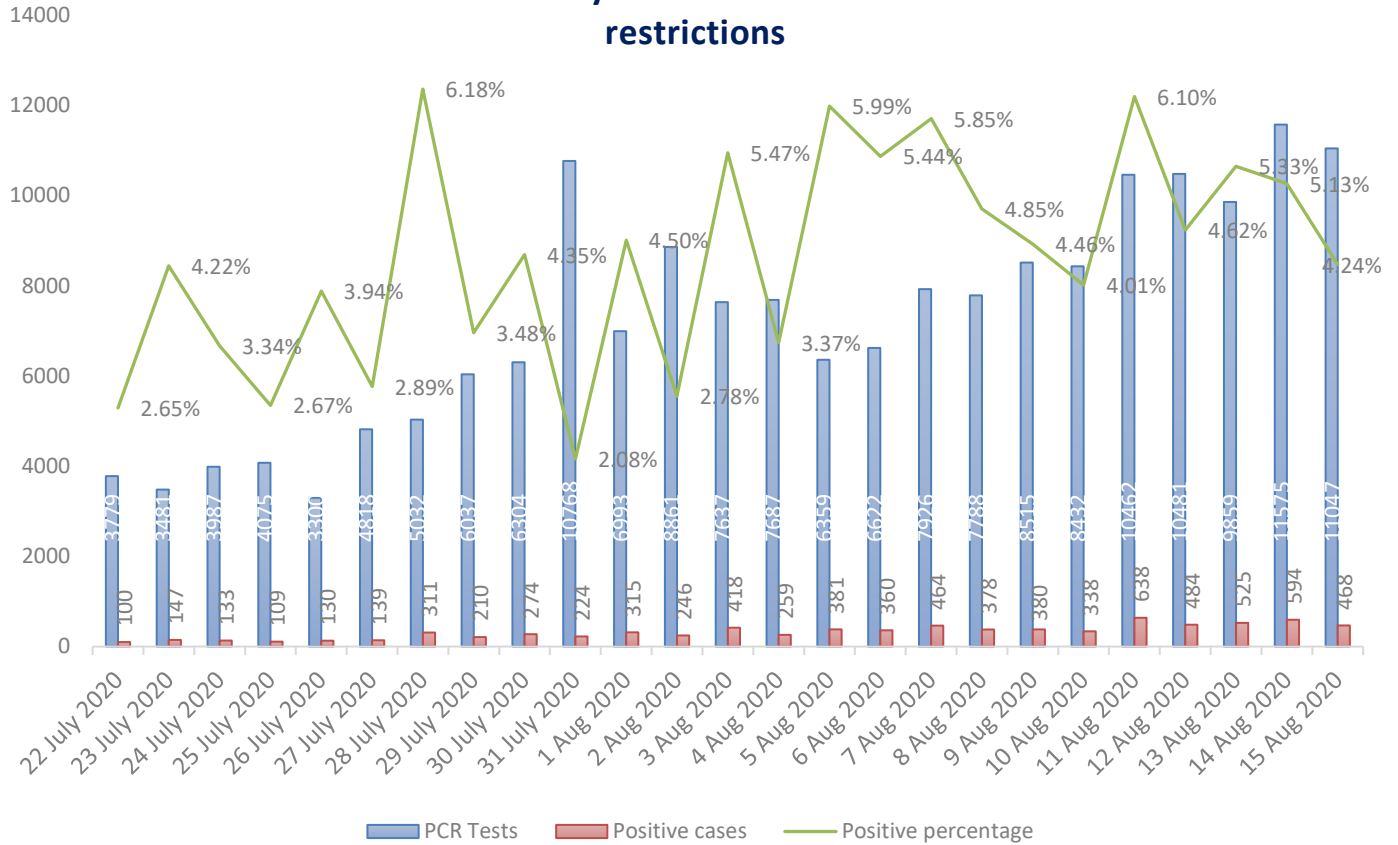
Trend of RT-PCR and COVID-19 cases



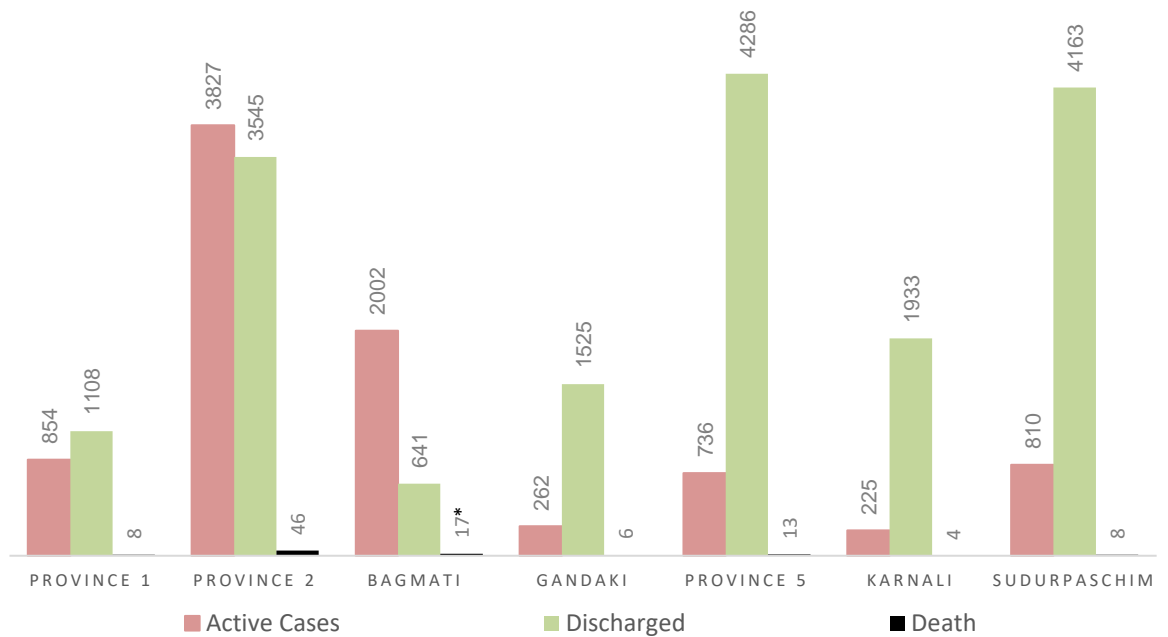
COVID-19 RECOVERED, ACTIVE AND DEATH CASES



Trend of RT-PCR Positivity Rate after end of lockdown with few restrictions

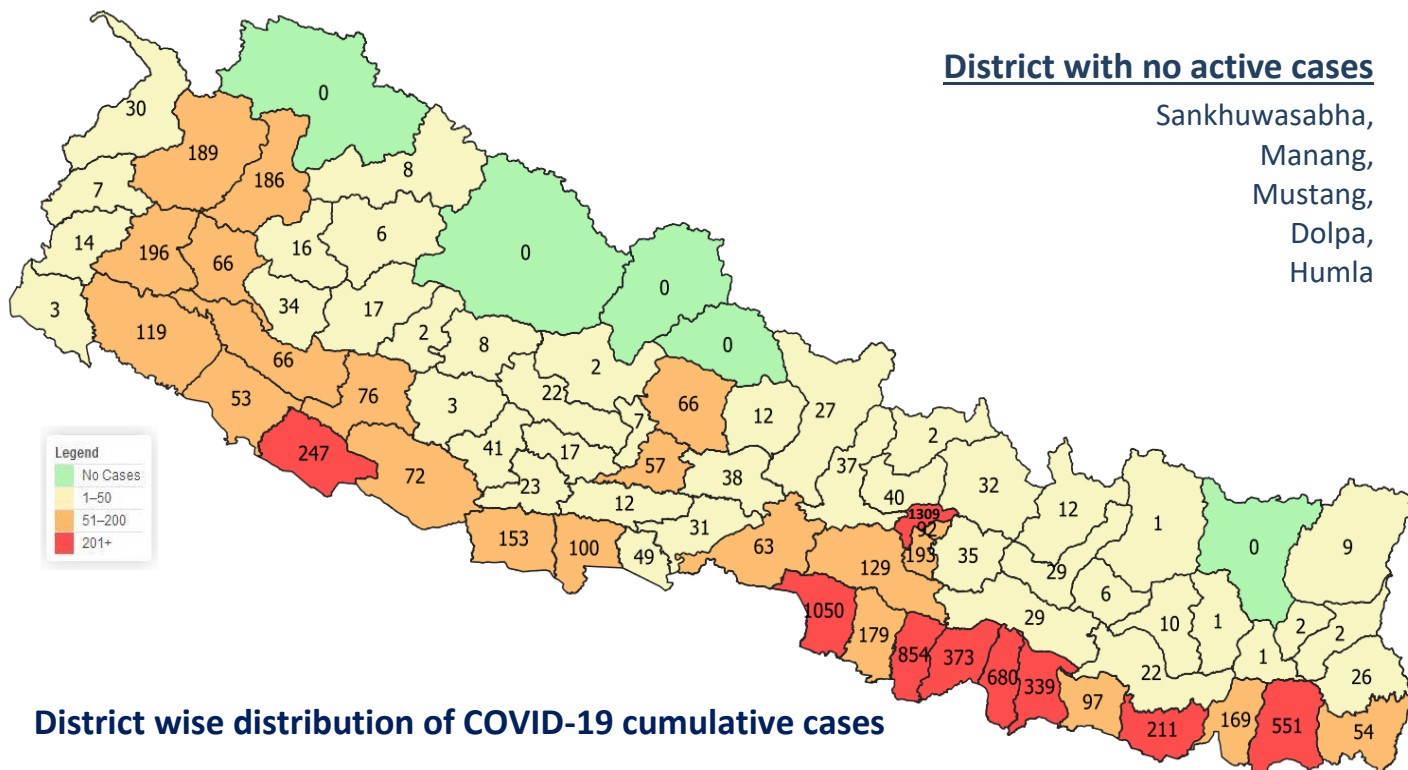


PROVINCE WISE DISTRIBUTION OF COVID-19 CASES, DISCHARGED AND ACTIVE CASES

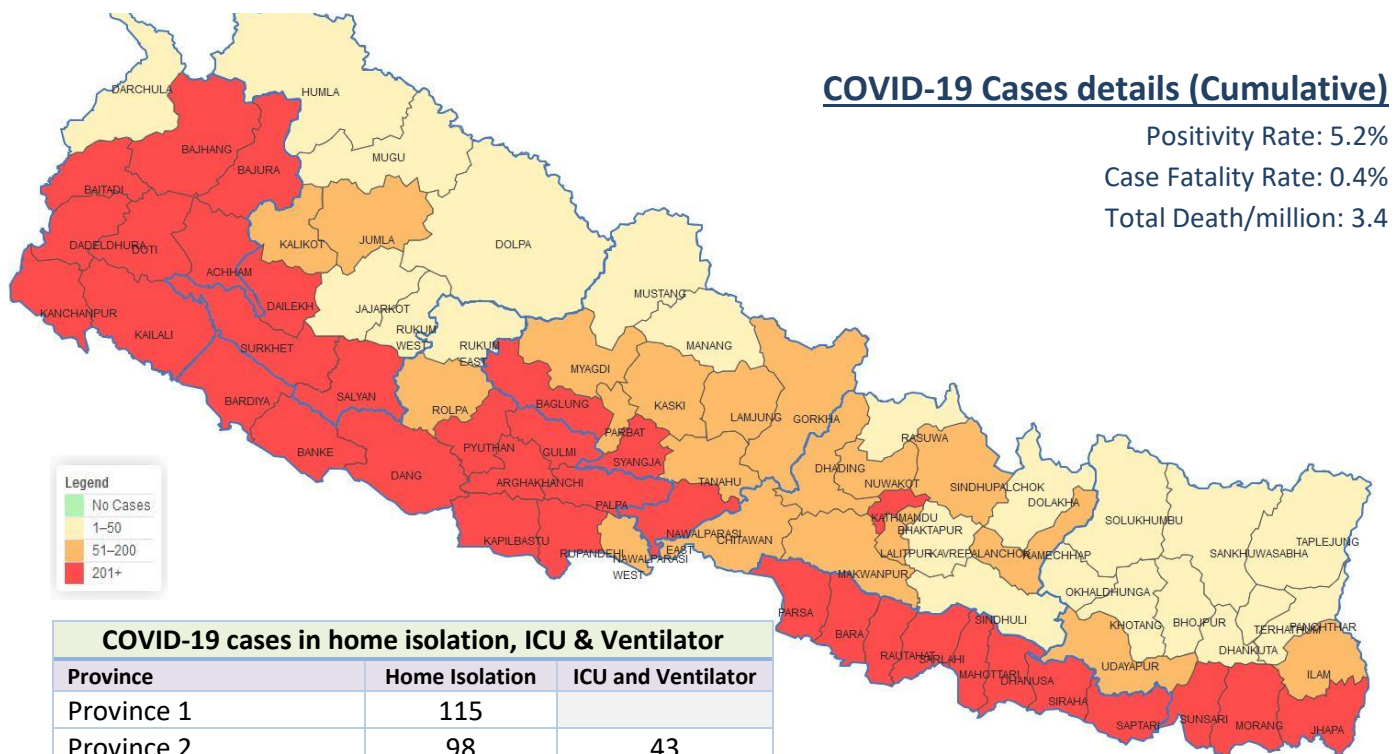


*Includes one death of a Chinese citizen

District wise distribution of COVID-19 active cases



District wise distribution of COVID-19 cumulative cases



COVID-19 cases in home isolation, ICU & Ventilator		
Province	Home Isolation	ICU and Ventilator
Province 1	115	
Province 2	98	43
Bagmati Province	105	46+4*
Gandaki Province		1
Province 5	90	8
Karnali Province	8	
Sudurpaschim Province	107	
Total	523	102

as of 15-08-2020, 2:00 PM
 *In Ventilator

RT-PCR Tests done in different laboratories

#	Laboratory	Cumulative Tests	Positive (In 24 hrs.)
1.	National Public Health Laboratory, Teku	113651	74
2.	B. P. Koirala Institute of Health Sciences, Dharan	23980	26
3.	Koshi Hospital, Biratnagar	24663	27
4.	Mechi Hospital, Jhapa	286	
5.	Provincial Public Health Laboratory/ Avian Disease Investigation Laboratory, Biratnagar	23096	41
6.	Gajendra Narayan Singh Hospital, Rajbiraj, Saptari	7411	
7.	Provincial Public Health Laboratory, Janakpur	9043	37
8.	Narayani Hospital, Birgunj	19791	23
9.	Shukraraj Tropical and Infectious Disease Hospital, Teku	18103	
10.	Bharatpur Hospital COVID-19 Diagnostic Laboratory/ National Avian Disease Investigation Laboratory, Chitwan	13767	8
11.	Vector Borne Disease Research and Training Centre, Hetauda	15900	38
12.	Kathmandu University Teaching Hospital, Dhulikhel	11959	14
13.	Patan Hospital, Lalitpur	9917	
14.	NAMS, Bir Hospital, Kathmandu	11241	7
15.	Tribhuvan University Teaching Hospital (TUTH)	9634	
16.	Nepal Police Hospital Laboratory, Kathmandu	1983	24
17.	Shree Birendra Hospital, Chhauni	1608	6
18.	Star Hospital Laboratory, Sanepa	6980	19
19.	Nepal Korea Friendship Municipality Hospital, Bhaktapur	4474	12
20.	Central Diagnostic Laboratory and Research Center, Kamalpokhari	671	
21.	BIDH Lab, Lalitpur	2755	11
22.	Sooriya Health Care Pvt. Ltd	202	2
23.	KMC Hospital, Kathmandu	372	
24.	HAMS Hospital, Kathmandu	1290	
25.	B & B Hospital, Lalitpur	266	2
26.	Pokhara Academy of Health Science, Pokhara	14545	8
27.	Provincial Tuberculosis Control Center, Pokhara/ Provincial Public Health Laboratory, Pokhara	17491	10
28.	Provincial Public Health Laboratory, Rupandehi	16752	34
29.	Bheri Hospital, Nepalgunj, Banke	28000	23
30.	Lumbini Provincial Hospital	4390	2
31.	National Path Lab & Research Center Pvt. Ltd., Butwal	467	
32.	Rapti Academy of Health Science, Dang	15947	10
33.	Bageswari Diagnostic and Polyclinic Center (P.) Ltd., Nepalgunj	148	
34.	Surkhet Provincial Hospital/ Avian Disease Investigation Laboratory, Surkhet	21700	5
35.	Karnali Academy of Health Science, Jumla	19991	
36.	COVID-19 Testing Laboratory, Dailekh	2901	3
37.	Chaurjahari Municipality PCR Laboratory, Rukum (East)	2651	
38.	Dadeldhura Hospital Laboratory, Dadeldhura	5475	2
39.	Seti Provincial Hospital/ Avian Disease Investigation Laboratory, Dhangadi	22159	
Total		505660	468

Global COVID-19 Statistics

21,357,890

Total Cases

6,442,737

(30.1%)

Active Cases

763,387

(3.6%)

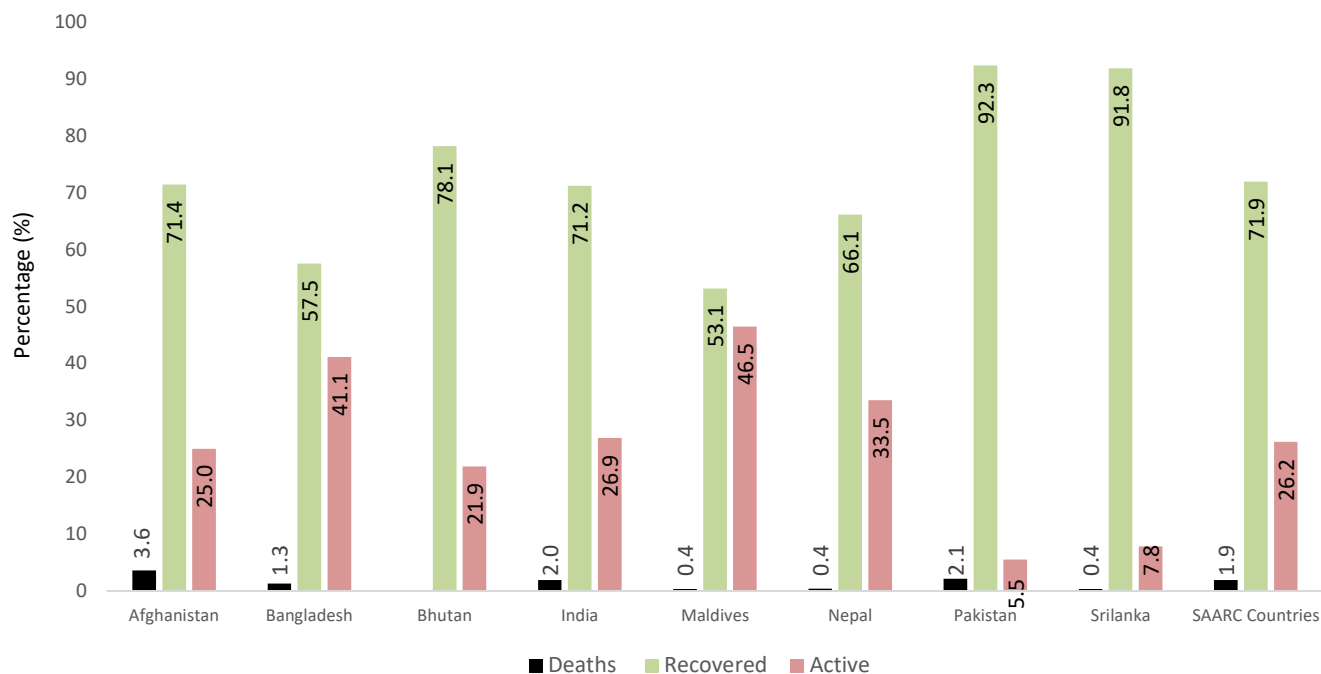
Deaths

14,151,766

(66.3%)

Recovered

COVID-19 cases in the SAARC Member States



Source: <http://www.covid19-sdmc.org/>

Information and Communication

Two Call Centers 1115 (from 6 am to 10 pm) and 1133 (24 hours) have been operationalized since 30th Falgun, 2076 (13 March 2020) to provide counselling service regarding COVID-19 prevention and treatment. People are requested to call these Call Centers for any queries related to COVID-19.

Total number of service users: **884**

People with symptoms of COVID-19 are requested to contact the hotline **1133** or mobile number **9851255839** for inquiries.

Additional Information: Please click [here](#) for all the Standards and Technical Guidelines regarding COVID-19

COVID-19 Hotline Service	1133 (24/7) 1115 (6 AM to 10 PM)
Web Portal	https://covid19.mohp.gov.np/ https://heoc.mohp.gov.np http://www.edcd.gov.np/
Official Viber Community	Search "MoHP Nepal COVID-19" on Viber to join the community
Social Media	fb.com/mohpnep fb.com/HEOCMoHP fb.com/edcdnepal
Mobile Application	Search "Hamro Swasthya" on Google Play Store and Apple Store