



Government of Nepal Ministry of Health and Population

SitRep

#190

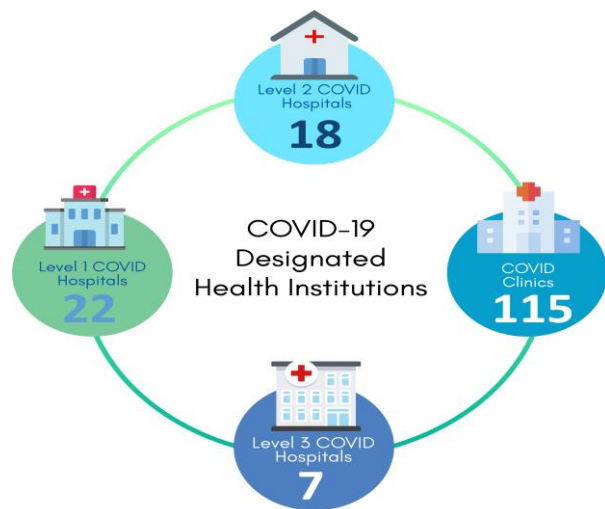
Health Sector Response to COVID-19

Monday | 17 August 2020 (1 Bhadra 2077)

RT-PCR Test	RT-PCR Test / Million	Total Positive Cases	Confirmed cases in isolation	Recovered	Recovery Rate	Deaths	People in Quarantine
529427	18143	27241	9639	17495	64.2%	107	15198

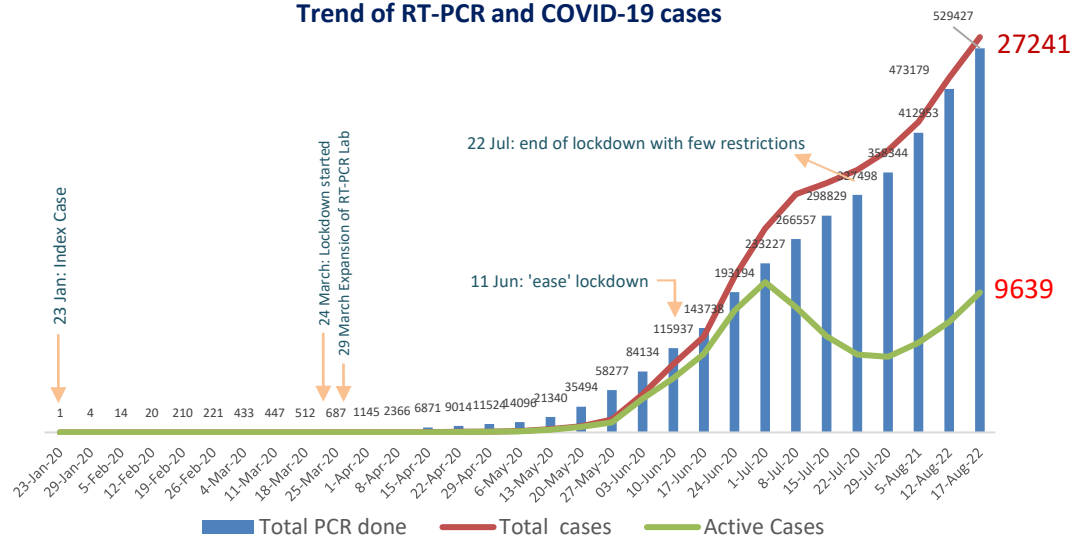
COVID-19 Summary (Last 24 hours)

Total RT-PCR Test done	11520
Recovered	160
Deaths	3
Confirmed Cases	581

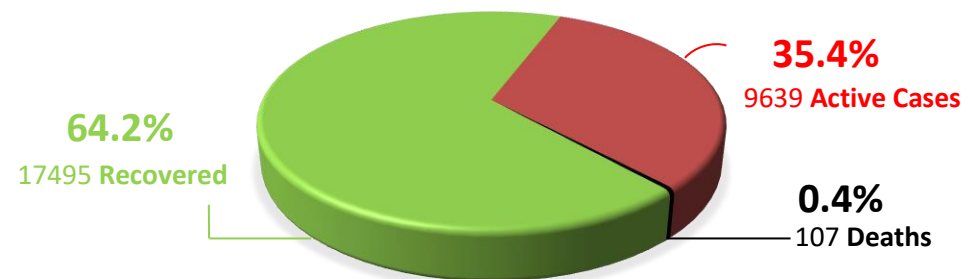


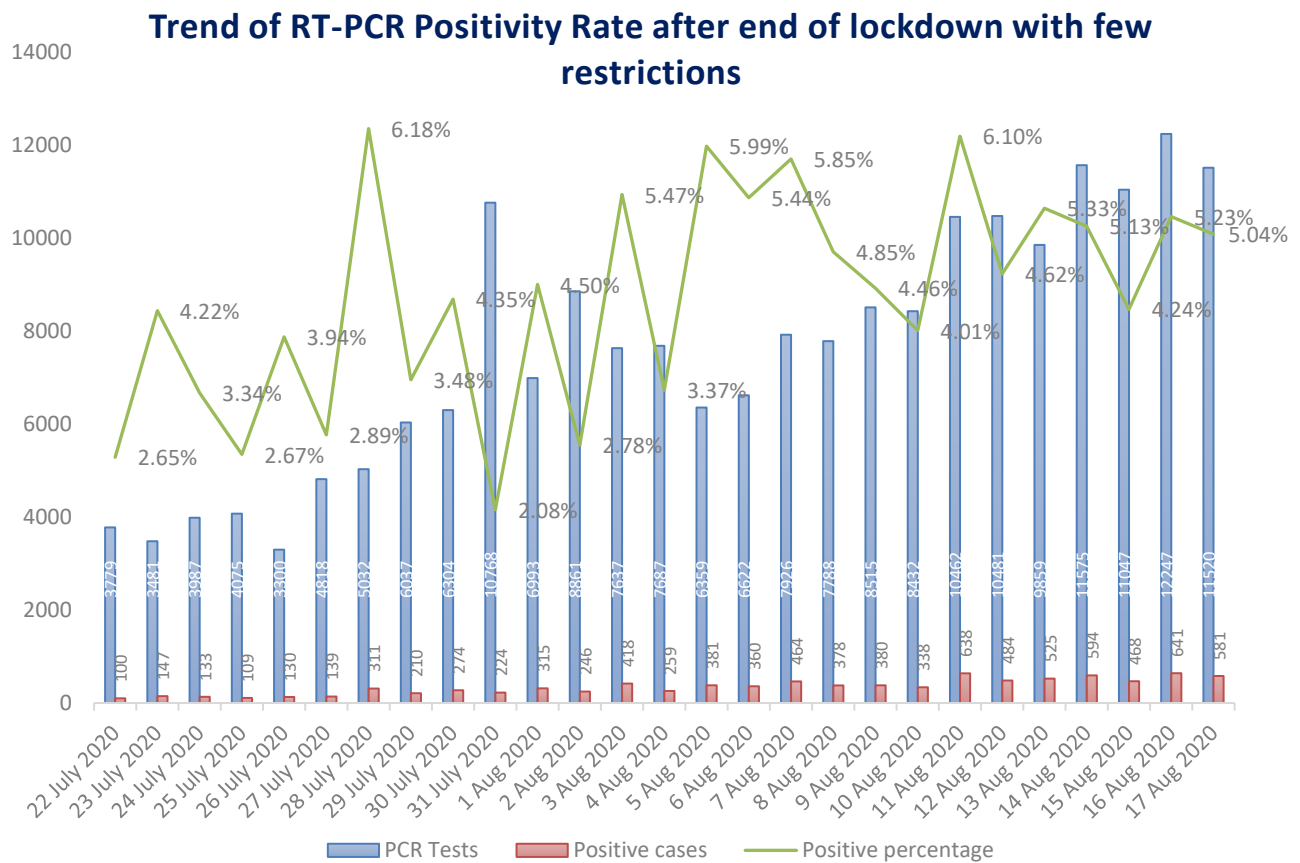
[Click here for more information](#)

Trend of RT-PCR and COVID-19 cases

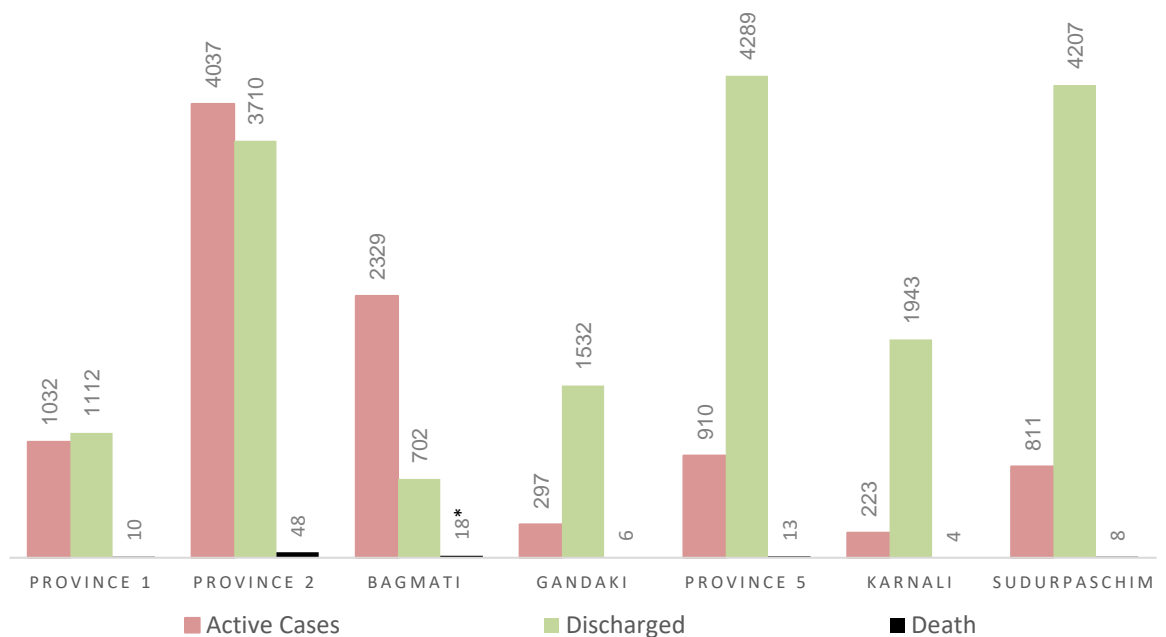


COVID-19 RECOVERED, ACTIVE AND DEATH CASES



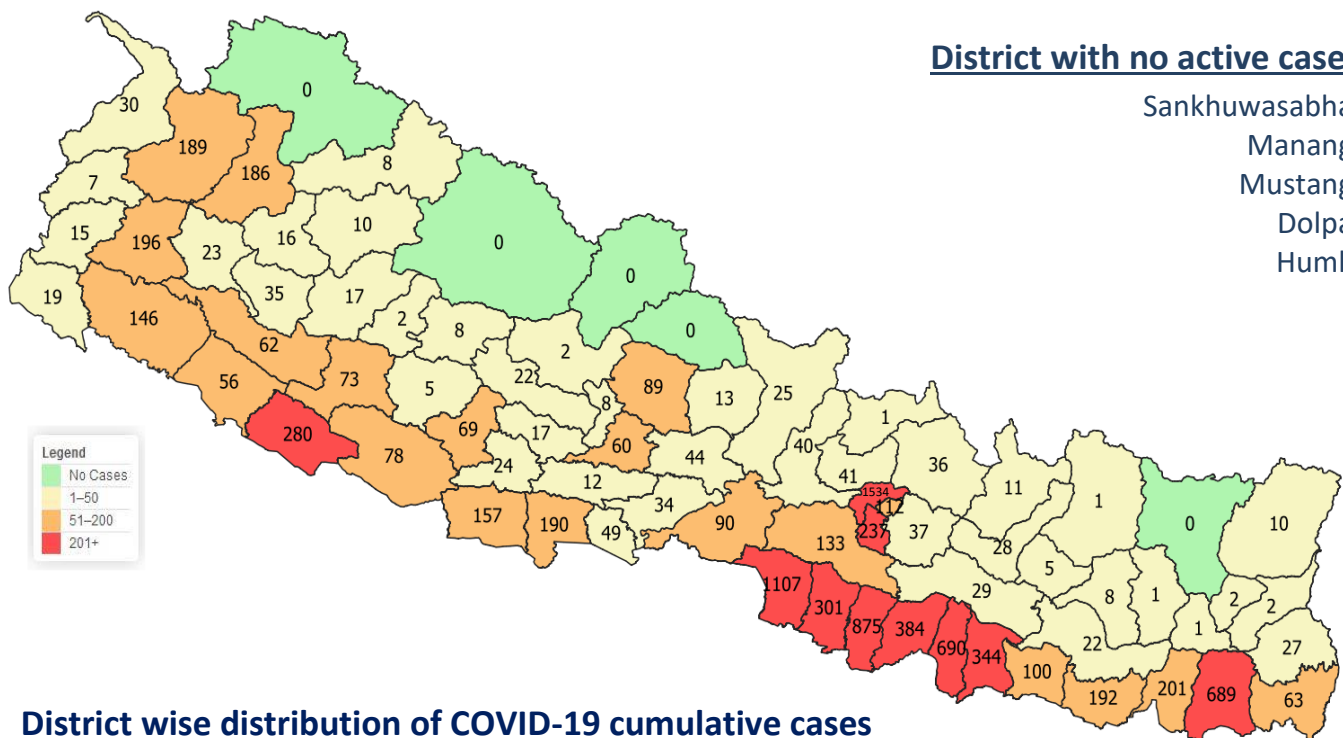


PROVINCE WISE DISTRIBUTION OF COVID-19 CASES, DISCHARGED AND ACTIVE CASES

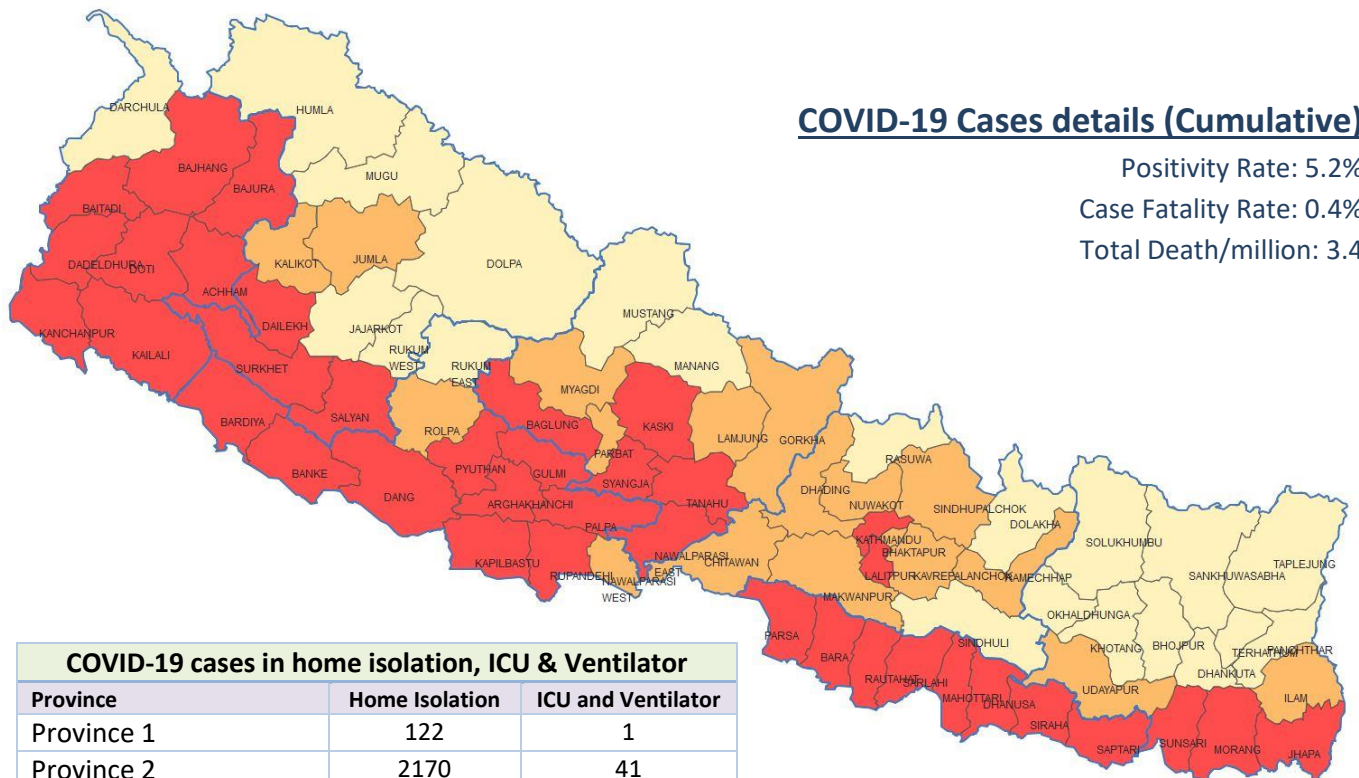


*Includes one death of a Chinese citizen

District wise distribution of COVID-19 active cases



District wise distribution of COVID-19 cumulative cases



COVID-19 cases in home isolation, ICU & Ventilator		
Province	Home Isolation	ICU and Ventilator
Province 1	122	1
Province 2	2170	41
Bagmati Province	111	47+6*
Gandaki Province		1
Province 5	175	11
Karnali Province	11	
Sudurpaschim Province	12	
Total	2601	107

as of 17-08-2020, 2:00 PM

*In Ventilator

RT-PCR Tests done in different laboratories

#	Laboratory	Cumulative Tests	Positive (In 24 hrs.)
1.	National Public Health Laboratory, Teku	116799	81
2.	B. P. Koirala Institute of Health Sciences, Dharan	25418	44
3.	Koshi Hospital, Biratnagar	25546	7
4.	Mechi Hospital, Jhapa	587	
5.	Provincial Public Health Laboratory/ Avian Disease Investigation Laboratory, Biratnagar	24097	32
6.	Gajendra Narayan Singh Hospital, Rajbiraj, Saptari	7911	
7.	Provincial Public Health Laboratory, Janakpur	9722	
8.	Narayani Hospital, Birgunj	20808	11
9.	Shukraraj Tropical and Infectious Disease Hospital, Teku	18869	39
10.	Bharatpur Hospital COVID-19 Diagnostic Laboratory/ National Avian Disease Investigation Laboratory, Chitwan	14498	
11.	Vector Borne Disease Research and Training Centre, Hetauda	16033	5
12.	Kathmandu University Teaching Hospital, Dhulikhel	12494	78
13.	Patan Hospital, Lalitpur	10312	
14.	NAMS, Bir Hospital, Kathmandu	11489	14
15.	Tribhuvan University Teaching Hospital (TUTH)	10071	22
16.	Nepal Police Hospital Laboratory, Kathmandu	2046	18
17.	Shree Birendra Hospital, Chhauni	1652	8
18.	Nepal APF Hospital, Balambu, Kathmandu	661	6
19.	Star Hospital Laboratory, Sanepa	8342	19
20.	Nepal Korea Friendship Municipality Hospital, Bhaktapur	4817	15
21.	Central Diagnostic Laboratory and Research Center, Kamalpokhari	1090	
22.	BIDH Lab, Lalitpur	3734	12
23.	Sooriya Health Care Pvt. Ltd	255	3
24.	KMC Hospital, Kathmandu	452	6
25.	HAMS Hospital, Kathmandu	1636	22
26.	B & B Hospital, Lalitpur	388	
27.	Pokhara Academy of Health Science, Pokhara	14614	1
28.	Provincial Tuberculosis Control Center, Pokhara/ Provincial Public Health Laboratory, Pokhara	19625	17
29.	Provincial Public Health Laboratory, Rupandehi	17069	38
30.	Bheri Hospital, Nepalgunj, Banke	29030	25
31.	Lumbini Provincial Hospital	4896	12
32.	National Path Lab & Research Center Pvt. Ltd., Butwal	763	12
33.	Rapti Academy of Health Science, Dang	16180	1
34.	Bageswari Diagnostic and Polyclinic Center (P.) Ltd., Nepalgunj	160	
35.	Surkhet Provincial Hospital/ Avian Disease Investigation Laboratory, Surkhet	22365	
36.	Karnali Academy of Health Science, Jumla	20194	3
37.	COVID-19 Testing Laboratory, Dailekh	2943	1
38.	Chaurjahari Municipality PCR Laboratory, Rukum (East)	2651	
39.	Dadeldhura Hospital Laboratory, Dadeldhura	6017	1
40.	Seti Provincial Hospital/ Avian Disease Investigation Laboratory, Dhangadi	23193	28
Total		529427	581

Global COVID-19 Statistics

21,836,919

Total Cases

6,495,290

(29.8%)

Active Cases

773,197

(3.5%)

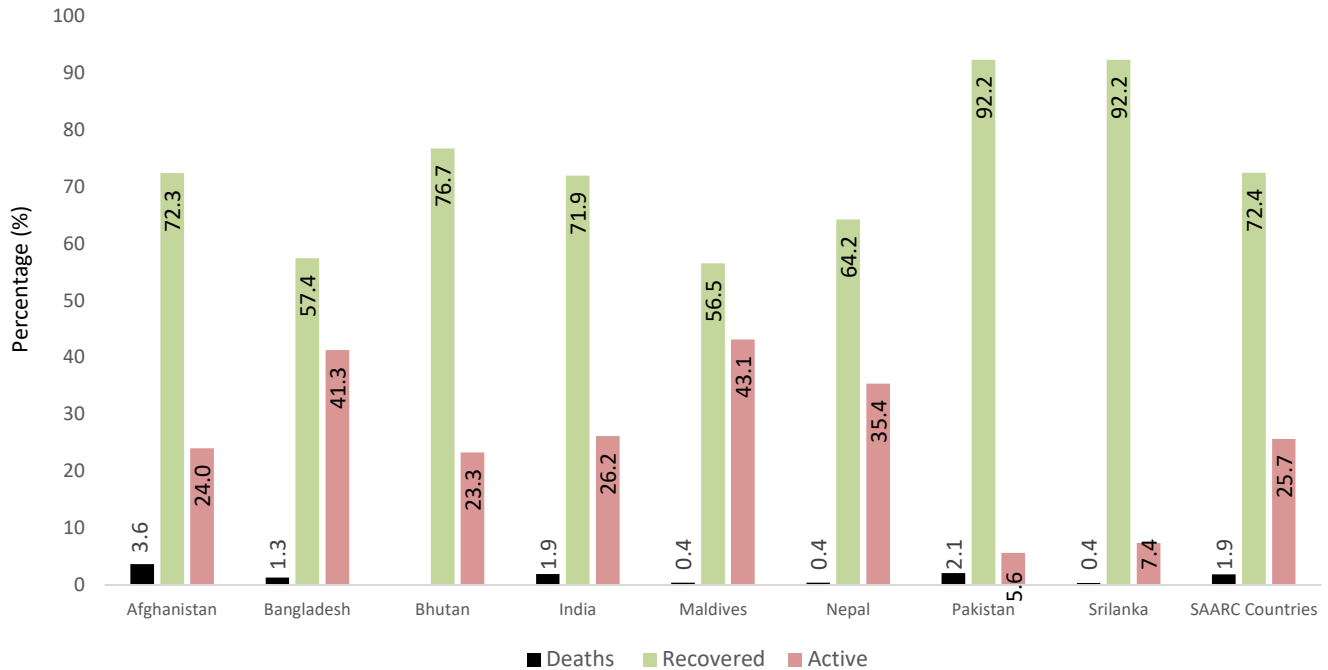
Deaths

14,568,432

(66.7%)

Recovered

COVID-19 cases in the SAARC Member States



Source: <http://www.covid19-sdmc.org/>

Information and Communication

Two Call Centers 1115 (from 6 am to 10 pm) and 1133 (24 hours) have been operationalized since 30th Falgun, 2076 (13 March 2020) to provide counselling service regarding COVID-19 prevention and treatment. People are requested to call these Call Centers for any queries related to COVID-19.

Total number of service users: **831**

People with symptoms of COVID-19 are requested to contact the hotline **1133** or mobile number **9851255839** for inquiries.

Additional Information: Please click [here](#) for all the Standards and Technical Guidelines regarding COVID-19

COVID-19 Hotline Service	1133 (24/7) 1115 (6 AM to 10 PM)
Web Portal	https://covid19.mohp.gov.np/ https://heoc.mohp.gov.np http://www.edcd.gov.np/
Official Viber Community	Search "MoHP Nepal COVID-19" on Viber to join the community
Social Media	fb.com/mohpnep fb.com/HEOCMoHP fb.com/edcdnepal
Mobile Application	Search "Hamro Swasthya" on Google Play Store and Apple Store