



Government of Nepal
Ministry of Health and Population

SitRep

#46

Health Sector Response to Coronavirus Disease (COVID-19)

Thursday | 13 Chaitra 2076 (26 March 2020)

The first case of COVID-19 was reported from Hubei Province of China on 31 December 2019. Till 26 March 2020, a total of 414179 people has been confirmed of COVID-19 and it has taken life of 18440 people. This disease has spread over 196 countries/ Territories.

Current Global status on COVID-19

COVID-19 Cases	Cumulative as of 25 March 2020
Confirmed	414179
Deaths	18440

Countries/ Areas/ Territories reporting COVID-19 cases	196
--	-----

7 Jan 2020	30 January 2020	11 March 2020
Confirmed COVID-19	Declared Public Health Emergency of International Concern (PHEIC)	Declared COVID-19 as Pandemic

Current status on COVID-19, Nepal

Case	Total	New
Total Investigation	758	65
Positive	3	0
Recoverd after the treatment	1	0
Negative	755	65

(Till 26 March 2020, 16:00 hrs)

First case: Investigated on 23 January; Currently recovered
The second and third infected persons are being treated in the isolation room of Teku Hospital.

Key Response

COVID-19 Hotline: Public concerns regarding COVID-19, it's control and treatment are being addressed via 3 hotlines (9851255839, 9851255837, 9851255834) from 8:00 to 20:00 hrs.

Provision of "COVID-19 call center"
From 6 am to 10 pm from 13 March for users of NTC and NCELL. For this free service please dial "1115"

Hospital	Suspected Cases Situation in Designated Hospitals		
	Patients under treatment in isolation	Discharged	ICU
Shukraraj Tropical and Infectious Disease Hospital	4	1	0
Patan Hospital	4	0	0
Armed Police Force	0	0	0
Kanti Children Hospital	9	0	0
Total	17	1	0

*Shukraraj Tropical and Infectious Disease Hospital :11 persons under observation
Updated as of 26 March 2020, 16:00 hrs

Daily EWARS reporting from Hospitals		
EWARS Reporting sites - 118 sentinel sites		
Date	ILI/ SARI Cases	COVID 19 Suspected Cases
22 March	74	6
23 March	39	5
24 March	34	8
25 March	44	10



Updated as of 26 March 2020, 16:00 hrs

- Official information on the COVID-19 by the Ministry of Health and Population is also available on the Viber Group "MoHP Nepal COVID-19". More than one hundred thousand people have been involved in first three days.
- For prevention and control of COVID-19 in province, different activities of preparedness are underway in collaboration of state chief minister /council of minister's, ministry of social development and local/municipal level.
- 13th meeting (24 March 2020) of the High Level Coordination Committee for the Novel Corona Disease Prevention and Control, formed under the Hon'ble Deputy Prime Minister and Minister of Defense has decided that the local levels will update the health records of the persons from third countries and persons from India in their respective regions wards every day. The local health coordinator will provide the details of those with symptoms of COVID-19 to the Chief District Officer (CDO) in daily basis. Those details will be reported by the CDO at the National Emergency Operations Center (NEOC) and NEOC will provide the information to Health Emergency Operation Center (HEOC) daily by 18:00 hrs. (ANNEX 1)
- Guidelines for use of Personal Protective Equipment (PPE) in relation to COVID-19, please refer to (ANNEX 6)

- The Ministry of Health and Population has been operating the Novel Coronavirus (COVID-19) Media Center from 25 March 2020 on a daily basis to disseminate and distribute official information to the general public and stakeholders regarding the prevention of COVID-19.
- Health and Population Secretary informed through Media Center that Quarantine Guideline and PPE Guideline were approved today and MOHP has provided Rs. 10 lakh to each 25 HUB hospitals to purchase the materials required for operation of Fever Clinic.

Ministry of Health and Population
Novel Coronavirus (COVID-19) Media Center

Please click the link below to see video

Chaitra 13/ March 26	Chaitra 12/ March 25	Chaitra 11/ March 24
		
Respected Secretary	Honorable Minister	Spokesperson

- All hospitals are requested to manage the suspected cases of COVID-19 as per “Algorithm to suspect COVID-19 infection based on the WHO Surveillance Case Definition” (ANNEX 2)
- Frequently asked question-answers on laboratory diagnosis of COVID-19 is published. (ANNEX 3)
- For international travel related information, please refer to (ANNEX 4)
- Protocol for COVID-19 Screening at Point of Entry and Protocol for ILI Clinics (COVID-19 Screening Fever Clinics) please refer to (ANNEX 5)

Province	Hospital Number	Isolation Bed
1	13	67
2	5	98
Bagmati	43	179
Gandaki	21	113
5	14	89
Karnali	1	20
Sudharpachhim	18	47
Total	80	613

- As of Today (26 March 2020), 613 isolation beds have been arranged in 80 health facilities for responding COVID-19 across the country and other health institutions is also arranging the isolation beds.
- Stakeholders, experts, media persons including all concerned bodies, are requested to continue their on-going support. Ministry also request all the citizen to be informed on the ways of infection prevention and adopt the recommended precautions.

COVID-19 Related sources and materials:


- Resources on COVID-19 is available on Ministry of Health and Population /HEOC or EDCD Web Portals/ Social Media Page.

For additional information please click the link below

COVID-19 IEC	Press Release MoHP	Technical Guidance
HUB Hospitals	Audio Visual PSAs	Contacts
<p>HEDMU/HEOC Phone: 01-4250845, Fax: 01-4250842, E-mail: heocmohp@gmail.com, Web: heoc.mohp.gov.np, fb: fb.com/HEOC</p>		<p>EDCD Phone: 01-4255796, Fax: 01-4100266, E-mail: ewarsedcd@gmail.com, Web: edcd.gov.np, fb: fb.com/edcdnepal</p>

"No hospital shall refer the suspected cases of COVID-19 to another health facilities, cases should be admitted in the isolation bed of the same hospital and throat swab sample should be collected and send the sample safely to the National Public Health Laboratory, Teku Kathmandu as per the Protocol"




Annex 1: 13th meeting (24 March 2020) of the High Level Coordination Committee for the Novel Corona Disease Prevention and Control



१. स्वास्थ्य तथा जनसंख्या मन्त्रालय र कृषि तथा पशुपन्छी विकास मन्त्रालयले तयार गरेको स्वास्थ्य सम्बन्धी प्रोटोकल अनुसार चीनतर्फका रसुवागढी र तातोपानी नाकाबाट मालसामान आयात निर्यात कार्य सुचारु गर्ने। यस सम्बन्धी आवश्यक समन्वय गृह मन्त्रालय र अर्थ मन्त्रालयले गर्ने।
२. अति आवश्यक वैकिड सेवा गृह मन्त्रालय र अर्थ मन्त्रालयको समन्वयमा सुचारु गर्ने। खुल्ला राख्नुपर्ने बैंक शाखाको सूची अर्थ मन्त्रालयले गृह मन्त्रालयलाई उपलब्ध गराउने।
३. औषधि, खाद्यबस्तु, पानी, दूध, फलफूल, तरकारी, पशुपन्छी र माछाको दाना, कुखुराका चल्ला डुबानी गर्ने र फर्केर जाने सवारी साधनलाई सुचारु गर्ने। यस्ता सवारी साधनले यात्रु ओसारपसार गर्न नपाउने।
४. औषधि उत्पादन, ग्यास चोटलिङ्गजस्ता कार्यामा संलग्न हुने थर्मिकहरूलाई कार्यस्थलसम्म आउन जानका लागि सम्बन्धित उत्पादक संस्थाको सवारी साधनको व्यवस्था गर्ने। गृह मन्त्रालयले सो सवारी साधनका लागि आवश्यक अनुमति दिने।
५. टुला खाद्य स्टोर तथा पसलहरूले आवश्यक खाद्यबस्तुहरू होम डेलिभरी गर्ने व्यवस्था मिलाउने। यसका लागि गृह मन्त्रालयले सीमित संख्याका सवारी साधनलाई अनुमति दिने।
६. स्थानीय तहले चढास्तरमा दूध, तरकारी, फलफूल लगायत अन्य खाद्यबस्तु विक्री वितरण गर्ने पसलहरूमा भीडभाड नहुने, मास्क र स्यानिटाइजरको प्रयोग गर्ने र ग्राहकहरूबीच भौतिक दूरी कायम हुने गरी सञ्चालन गर्न सहजीकरण गर्ने।
७. अति आवश्यक परी खाद्यान्न डुबानी गर्नुपरेमा गृह मन्त्रालय, संस्कृति, पर्यटन तथा नागरिक उड्डयन मन्त्रालय र उद्योग, वाणिज्य तथा आपूर्ति मन्त्रालयको समन्वयमा हवाई डुबानी गर्ने व्यवस्था मिलाउने।
८. इन्डक्सन चुल्हा प्रयोग गर्न प्रोत्साहन दिन अर्थ मन्त्रालय र ऊर्जा, जलस्रोत तथा सिंचाइ मन्त्रालयले समन्वय गरी विद्युत महसूल र भन्सार महसूल छुट दिने व्यवस्था मिलाउने।
९. गृह मन्त्रालय र संस्कृति, पर्यटन तथा नागरिक उड्डयन मन्त्रालयको स्वीकृतिमा नेपालका विभिन्न स्थानहरूमा रहेका विदेशी नागरिकहरूलाई हवाई उड्डार गरी काठमाडौं ल्याई विभिन्न अन्तर्राष्ट्रिय विमानस्थलबाट आफ्नो देश फर्की जान सहजीकरण गर्ने। यसरी ल्याइएका विदेशीहरूलाई विमानस्थलबाट आफ्नो देश फर्की जाने उड्डानको समय बमिलेको अवस्थामा सो अवधिभर विमानस्थल नजिकको होटलमा निजहरूकै खर्चमा क्वारेन्टाइनमा राख्ने।
१०. स्थानीय तहहरूले आ-आफ्नो क्षेत्रभित्रका बढाहरूमा तेस्रो मुलुक र भारतबाट आएका व्यक्तिहरूको स्वास्थ्यसम्बन्धी विवरणसहितको अभिलेख प्रत्येक दिन अद्यावधिक गर्ने। स्थानीय स्वास्थ्य संयोजकले कोभिड-१९ को लक्षण देखिएका व्यक्तिहरूको विवरण प्रत्येक

२०६९/१२/१२
साँच

मुख्य सचिव

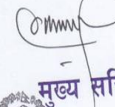





दिन प्रमुख जिल्ला अधिकारीलाई उपलब्ध गराउने। यस्तो विवरण प्रमुख जिल्ला अधिकारीले राष्ट्रिय आपत्कालीन कार्यसञ्चालन केन्द्रमा र सो केन्द्रले आपत्कालीन स्वास्थ्य कार्यसञ्चालन केन्द्रमा प्रत्येक दिन साँझ ६ बजेभित्र पठाउने।

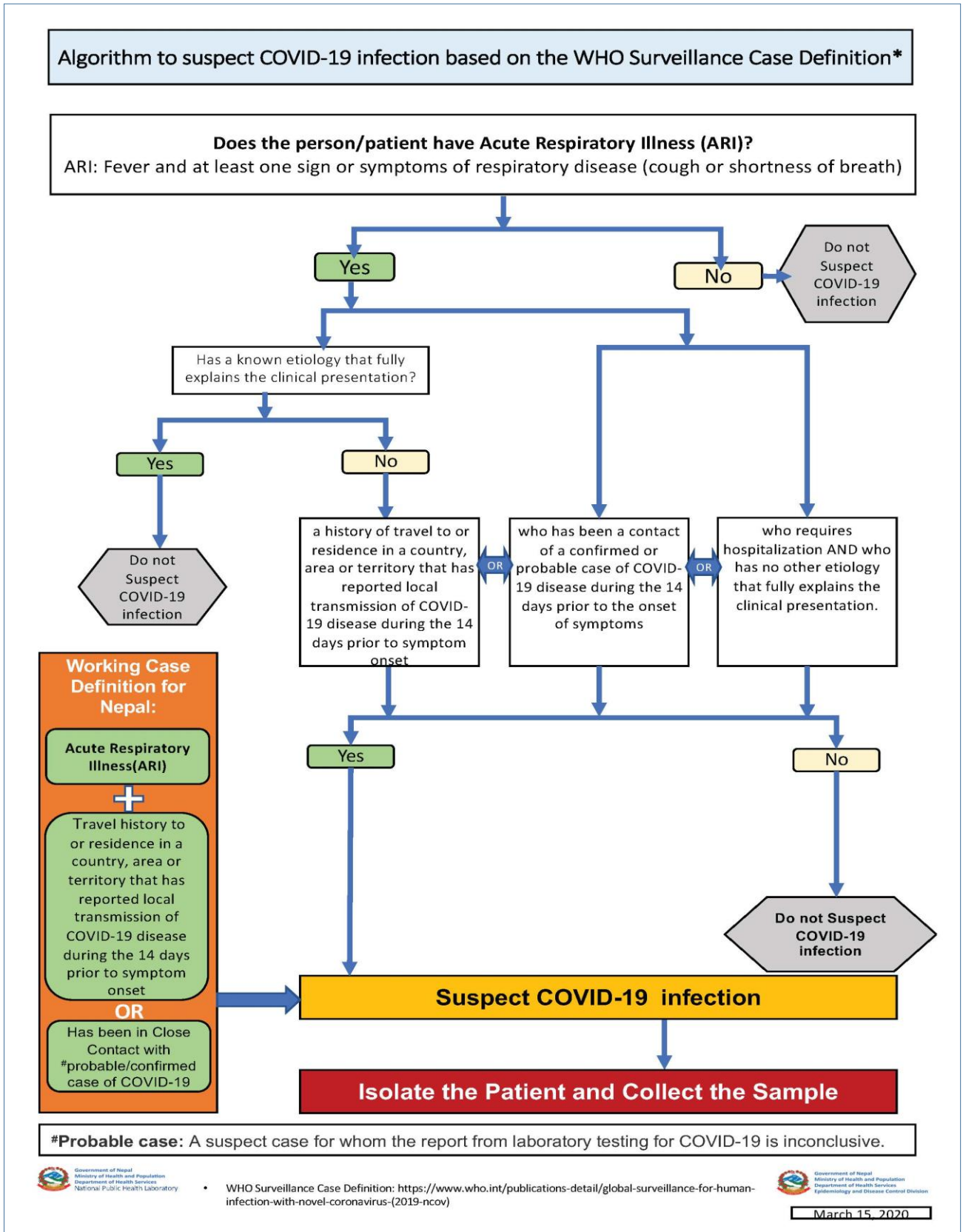
११. प्रदेश र स्थानीय तहहरूले क्वारेन्टाइनको व्यवस्था गरी सञ्चालन गर्ने व्यवस्था मिलाउने।
१२. सञ्चार तथा सूचना प्रविधि मन्त्रालयले प्रधानमन्त्री तथा मन्त्रिपरिषद्को कार्यालय, गृह मन्त्रालय र स्वास्थ्य तथा जनसंख्या मन्त्रालयमा ४ अंकको टोल फ्री टेलिफोन सेवा जडान गर्ने व्यवस्था मिलाउने।
१३. सबै स्थानीय तहहरूले आ-आफ्नो क्षेत्रमा अनिवार्य रूपमा Chlorine र Bleaching Powder लगायतका Disinfectant नियमित छर्ने व्यवस्था गर्ने।
१४. विदेशबाट सामान आयात गर्ने कन्टेनर र ट्रकलाई भन्सार विन्दुमा Disinfect स्प्रे गर्ने व्यवस्था मिलाउने।
१५. औषधि र औषधिजन्य पदार्थ आयात गर्नका लागि संस्कृति, पर्यटन तथा नागरिक उड्डयन मन्त्रालयले चार्टर हवाई सेवाको व्यवस्था मिलाउने।
१६. गृह मन्त्रालयले समग्र परिस्थितिको समीक्षा गरी शान्ति सुव्यवस्था कायम गर्ने।

२०६९/१२/१२
साँच

मुख्य सचिव

Annex 2: Algorithm to suspect COVID-19 infection based on the WHO Surveillance Case Definition



Annex 3: Frequently asked question-answers on laboratory diagnosis of COVID-19 is published.

Frequently Asked Questions about Novel Corona Virus (COVID-19) Test

1. Novel Corona virus को Test कुन ठाउँमा गरिन्छ ?
→ यो Test राष्ट्रिय जनस्वास्थ्य प्रयोगशाला (NPHL) टेकु, काठमाण्डौमा गरिन्छ ।
2. Suspected Corona Virus Test को लागि NPHL मा नमूना संकलन गर्ने व्यवस्था छ कि छैन ?
→ संकास्पद् विरामीलाई isolation मा राख्नु पर्ने भएकोले नमूना सम्बन्धित Hospital ले संकलन गरेर यस प्रयोगशालामा पठाउनु पर्ने छ । विरामी सिधै यस प्रयोगशालामा आउन मिल्दैन ।
3. संकलन गरिएको नमूना कुन विधि अपनाई NPHL पठाउन सकिन्छ ?
→ VTM मा संकलन गरिएको नमूनालाई Triple Pack गरि Cold Chain Maintain (2-8° C) गरेर NPHL मा पठाउनु पर्नेछ ।
4. Novel Corona virus Test गर्नको लागि कति पैसा लाग्छ ?
→ हाललाई यो Test यस प्रयोगशालामा निशुल्क गरिन्छ ।
5. के यो Novel Corona virus Test सबैले गराउन पाउँछ ?
→ डाक्टरको परामर्श पछि मात्र यो Test गराउन सकिन्छ ।
6. Corona virus Test को लागि कुन कुन नमूना संकलन गरिन्छ ?
→ यस Test को लागि Throat Swab, Nasal Swab आदि नमूना संकलन गरिन्छ ।
7. Novel Corona virus Test को लागि नमूना संकलन कति बजे सम्म गरिन्छ ?
→ VTM मा संकलन गरिएको नमूनालाई Triple Pack गरि Cold Chain Maintain (2-8° C) गरेर ल्याएको खण्डमा २४ सै घण्टा यस प्रयोगशालामा संकलन गरिन्छ (कार्यालय समयमा नमूना संकलन गर्ने ठाउँमा र अन्य समयमा कार्यालय सहायकलाई बुझाउन सकिन्छ) ।
8. Novel Corona virus Test को Report आउन कति समय लाग्छ र कुन ठाउँ बाट लिने ?
→ यो Test को Report आउन २४ देखि ४८ घण्टा सम्म लाग्छ । लिखित Report यस प्रयोगशालाबाट लिन सकिने छ । Report positive भएको खण्डमा सम्बन्धित hospital र डाक्टर लाई तुरुन्त जानकारी गराईनेछ ।
9. यो Test को लागि सम्पर्क व्यक्तिहरुको मोबाईल नं के के छ ?
 १. डा. श्रवन कुमार मिश्र ९८५११६८२२०
 २. डा. रन्जित शाह ९८२७७०१४६५
 ३. श्री राजेश कुमार गुप्ता ९८५१२३९९८८
 ४. दिनेश थापा मगर ९८२३१६८५४० (रात्री समयको लागि)
 ५. नरेश थापा मगर ९८०३१५२१४९ (रात्री समयको लागि)

Annex 4: International travel related information



Government of Nepal
Ministry of Home Affairs

DEPARTMENT OF IMMIGRATION

Katmandu, Nepal
Government of Nepal
Ministry of Home Affairs
Department of Immigration
Katmandu, Nepal

+977-1-4438862

Very Urgent Notice Regarding Arrival Restriction in Nepal
(Dated 18th March, 2020, Wednesday 23:45 Hrs.)

Government of Nepal (GoN) has been monitoring the present global pandemic, scale of severity and spread of Covid-19 around the world.

Guided by the WHO flash reports and recommendations and learning from the international practices, measures and force majeure to combat against COVID-19, the National High Level Coordination Committee, GoN has made the following decision directly related to Arrival Restriction in Nepal which shall come in to effect from 20th March, 2020 (Friday) midnight Nepali Standard Time (NST) to till 12th April, 2020 (Sunday) midnight (NST).

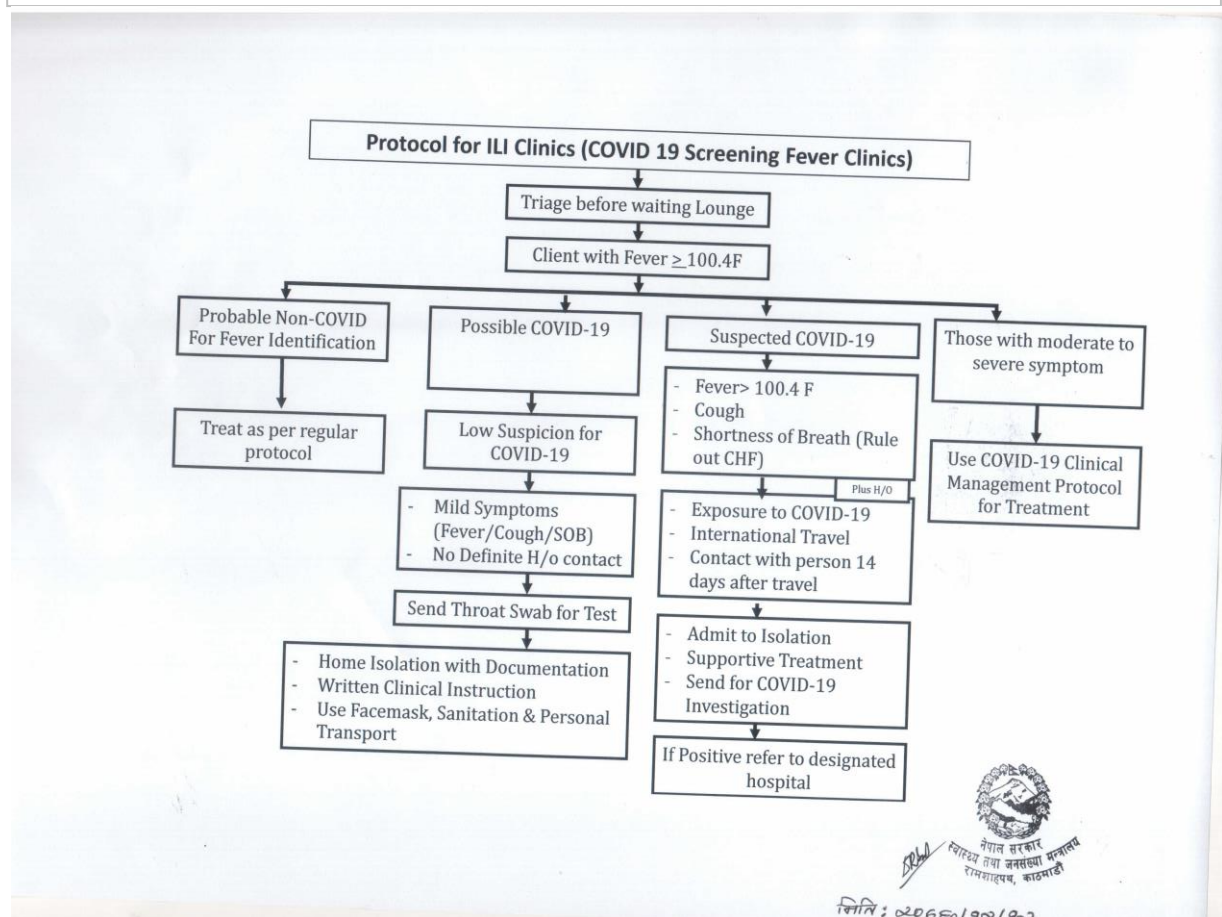
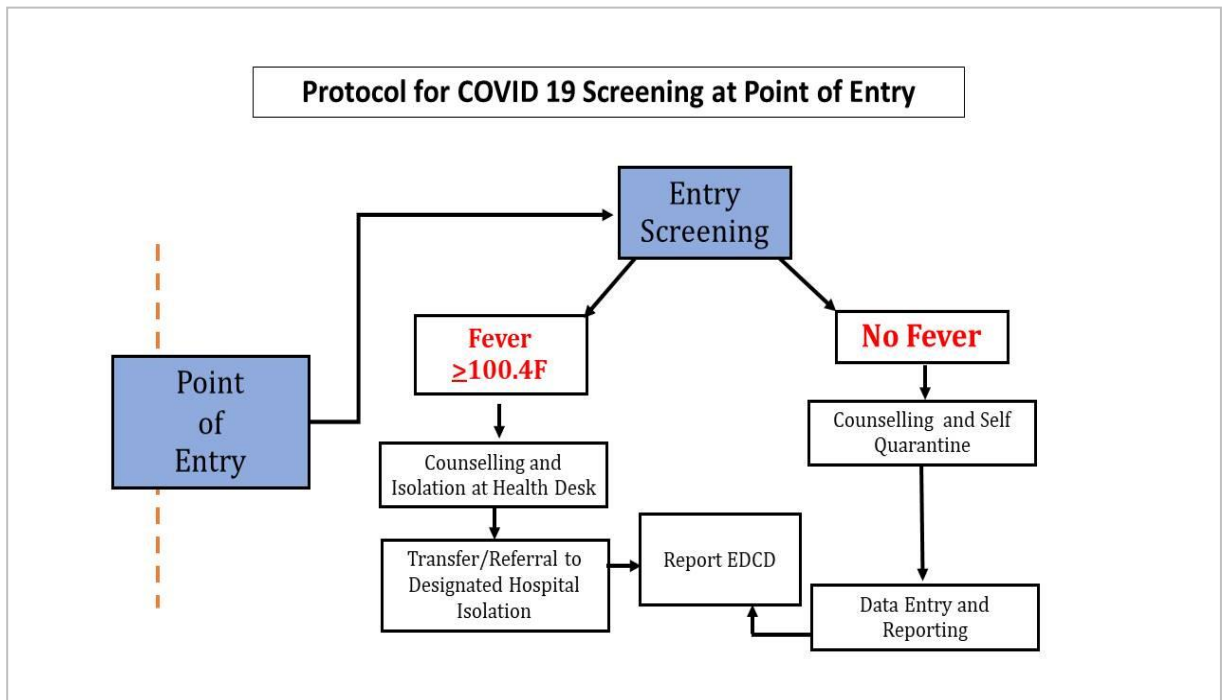
Decision on Arrival Restriction: All the passengers coming through direct flights, having a transit at, and taking the first flight of their origin from Europe, West-Asia and all the Gulf-Countries, Turkey, Malaysia, South Korea and Japan are subjected to Arrival Restrictions in Nepal.

Note:

- i. *This Notice will be circulated shortly to Nepali diplomatic missions abroad, foreign diplomatic missions in Nepal and International airlines companies bound to Nepal.*
- ii. *Department of Immigration has launched a hotline Service (+977-1-4113045) at Immigration Office, Tribhuvan International Airport for immigration related information.*
- iii. *Please visit our official website (www.nepalimmigration.gov.np) for any new updates on immigration control. For further enquiries, please contact to Department of Immigration at +977-1-4438862 from Sunday to Friday (10:00-17:00 Hrs NST).*


(Ramchandra Tiwari)
Director

Annex 5: "Protocol for COVID-19 Screening at Point of Entry" for COVID-19 Case Management" and Protocol for ILI Clinics (COVID-19 Screening Fever Clinics)



Annex 6: Guidelines for use of Personal Protective Equipment (PPE) in relation to COVID-19

Guidelines for use of personal protective equipment in relation to Covid-19:

Developed by expert Team of NMC and Government of Nepal with reference from WHO

A. For Aerosol Generating procedures: Dental procedures, bronchoscopy, Upper GI Endoscopy, ENT procedures, Nebulization, Intubation of a patient, CPR, Non-invasive ventilation, endotracheal suctioning, when obtaining nasopharyngeal or oropharyngeal swab, etc. **in Covid-19 suspected or confirmed cases health personnel need to use the following protective equipment: Category I PPE:**

- N-95 mask
- Goggles or visor
- Gloves (loose gloves acceptable)
- Water resistant OR standard disposable gowns
- Cap: Regular disposable

B. For Non aerosol generating covid-19 suspected or confirmed patients: Health personnel need to use the following protective equipment: Category II PPE:

- Surgical mask (seal the top edge with tape)
- Goggles or visor
- Gloves (loose gloves acceptable)
- Water resistant or standard disposable gowns
- Cap: Regular disposable

C. For Physicians examining the patients in the fever/screening clinics the following PPE is recommended: Category II PPE

- Surgical mask, (seal the top edge with a tape)
- Goggles or visor
- Water resistant or standard disposable gowns
- Regular disposable Cap
- Gloves (loose gloves acceptable)

Note: For staff involved in preliminary screening not involving direct contact, maintain spatial distance of at least 1meter, no PPE required; Use surgical mask if maintaining distance not always possible.

D. For escorts or drivers, the following PPE is recommended: Category III PPE:

- Surgical masks
- Gloves
- Gowns (if physical contact expected)
Follow hand hygiene and keep minimum 3 to 6 feet distance from the patient

E. For Laboratory staff: category II or III PPE; depending upon the chance of splash:

- surgical mask
- Gown
- Loose Gloves
- Eye protection (if risk of splash)

F. For all staff, including health care workers involved in any activity that does not involve contact with COVID-19 patients and working in other areas of patient transit (e.g. wards, corridors). **No PPE required.**

For Everyone:

- *Maintain 3-6 feet distance while visiting patients, if no need to touch the patient.*
- *Mandatory hand-hygiene after each use of PPE and between patients.*
- *Mandatory surface cleaning of bed or furniture with 0.5% Chlorine disinfectant (Virex* or similar) between each patient in OPD or in an inpatient setting.*



Get latest accurate information on COVID-19
on our official viber community

MoHP Nepal COVID-19

Community on Viber | Official Viber Group



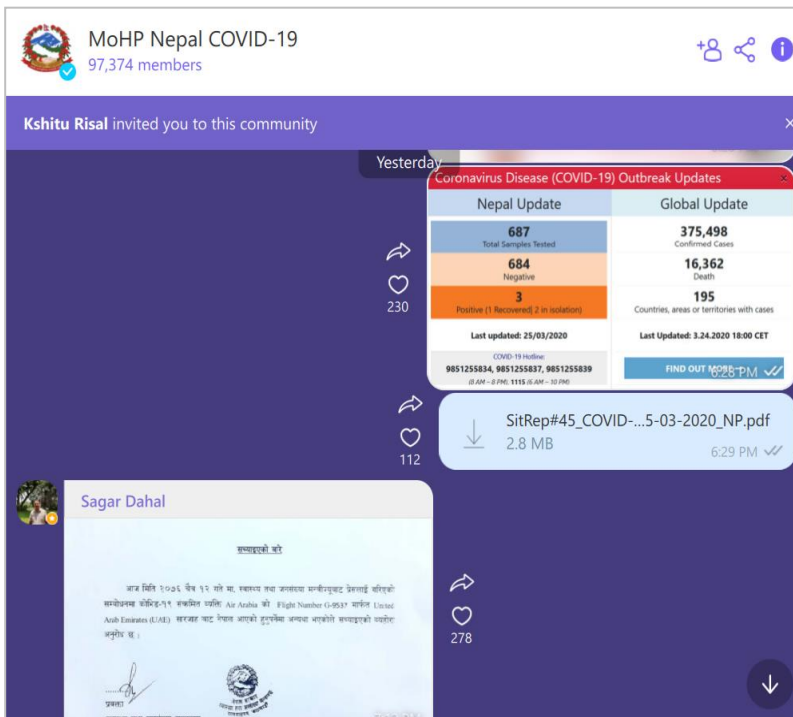
Government of Nepal
Ministry of Health and Population
Health Emergency Operation Center

COVID-19 Hotline: 1115, 9851255834, 9851255837, 9851255839

Join Viber Community now and
get all the genuine news
related to COVID-19 in Nepal.

Ministry of Health and
Population (MoHP)/ HEOC
have launched its official Viber
Community to disseminate the
latest news and information
about the Novel Coronavirus
(Covid-19).

To join, search for **'MoHP
Nepal COVID-19'** on the
messaging app or click on this
link:
[https://vb.me/mohp_comms_n
p2020](https://vb.me/mohp_comms_n
p2020)



Toll Free Number

1115
NTC & NCELL

COVID-19
**Call
Center**



नेपाल सरकार

स्वास्थ्य तथा जनसंख्या मन्त्रालय

स्वास्थ्य आपतकालीन तथा विपद व्यवस्थापन इकाई, (HEDMU/ HEOC)

सूचना

सर्वसाधारणको सुविधाका लागि COVID-19 रोग तथा सो को निदान एवं उपचार सम्बन्धी जानकारी चाहिएमा बिहान ८:०० बजे देखि बेलुकी ८:०० बजे सम्म तल उल्लेखित सम्पर्क नम्बरमा सम्पर्क गर्न सकिने व्यहोरा सर्वसाधारणका लागि अनुरोध छ ।



नोट: साथै यस सम्बन्धी सम्पूर्ण अध्यावधिक विवरण HEOC (<http://heoc.mohp.gov.np>) को वेब पोर्टलमा उपलब्ध

रहेको जानकारीका लागि अनुरोध छ ।

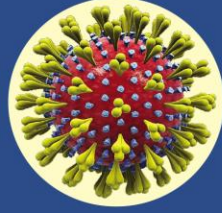
वेब: heoc.mohp.gov.np

ई-मेल: heocmohp@gmail.com

फेसबुक: [fb.com/HEOCMoHP](https://www.facebook.com/HEOCMoHP)

फोन: ०१४२५०८४५

फ्याक्स: ०१४२५०८४२



कोरोना भाइरस रोग (कोभिड-१९)

हाल विश्वभरी फैलिरहेका नयाँ कोरोना भाइरसको संक्रमणबाट लागेको रोगलाई विश्व स्वास्थ्य संगठनले “कोभिड १९” को नाम दिएको छ र यसलाई विश्वव्यापी महामारीको रूपमा घोषणा गरिसकिएको छ ।

कोरोना भाइरस श्वाशप्रश्वाशको माध्यमबाट सर्ने रोग हो । यो संक्रमित व्यक्तिले खोक्दा वा हाछ्युँ गर्दा नाक वा मुखबाट निस्कने छिट्टाको माध्यमबाट एक व्यक्तिबाट अर्को व्यक्तिमा सर्दछ ।

कोरोना भाइरस रोगको मुख्य लक्षणहरू



ज्वरो
आउने



खोकि
लाग्ने



श्वाश फेर्न
गाह्रो हुने

यस्ता लक्षणहरू देखा परेमा नजिकको तोकिएको स्वास्थ्य केन्द्रमा सम्पर्क गर्ने ।

यस रोगको संक्रमणको जोखिमबाट बच्नको लागि निम्न उपायहरू अपनाउनुपर्छ ।



ज्वरो र खोकी लागेको व्यक्तिबाट टाढा रहने वा आफूलाई ज्वरो र खोकी लागेको छ भने पनि अरु व्यक्तिबाट टाढा रहने र मास्कको प्रयोग गर्ने



खोक्दा हाछ्युँ गर्दा नाक मुख टिस्यू पेपर वा कुहिनाले छोप्ने र प्रयोग गरेको टिस्यू पेपरलाई बिको भएको फोहर फाल्ने भाँडोमा फाल्ने र साबुन पानीले मिचिमिचि हात धुने वा अल्कोहल भएको स्यानिटाइजर प्रयोग गर्ने



मिडभाडमा नजाने र अरुलाई पनि नजान सुफाव दिने, हात मिलाउनुको सट्टा नमस्कार गर्ने



बेलाबेलामा साबुन पानीले मिचिमिचि हात धुने वा अल्कोहल भएको स्यानिटाइजर प्रयोग गर्ने



कोरोना प्रभावित देशबाट आएको व्यक्तिहरूमा माथिका लक्षणहरू देखिए स्वास्थ्य केन्द्रमा तुरुन्त जानुपर्दछ । घरैमा बस्दा परिवारका सदस्यहरूबाट १४ दिन सम्म छुट्टै आईसोलेसनमा बस्नु पर्दछ ।



कोरोना भाइरस रोगका वारेमा थप जानकारीको लागि १११५ वा ८८५१२५५८३८, ८८५१२५५८३७, ८८५१२५५८३४ मा सम्पर्क गरौं ।



नेपाल सरकार
स्वास्थ्य तथा जनसंख्या मन्त्रालय
राष्ट्रिय स्वास्थ्य शिक्षा सूचना तथा सञ्चार केन्द्र