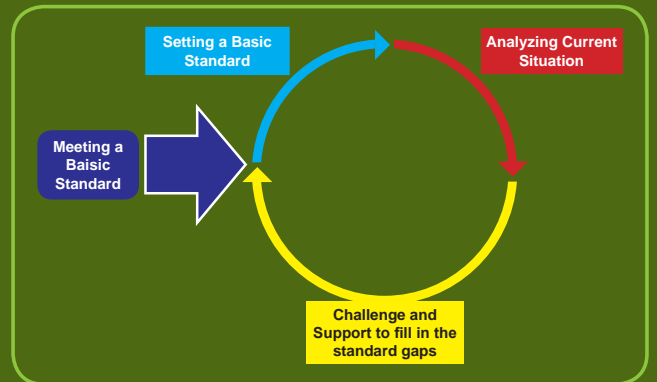


# Hospital Management Strengthening Program (HMSP)

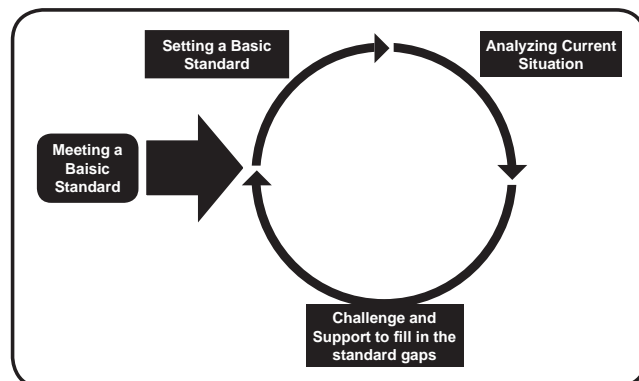


Checklist  
To Identify the Gaps in  
**Minimum Service Standards (MSS)**  
of District Hospitals



Government of Nepal  
Ministry of Health and Population  
Curative Services Division

# Hospital Management Strengthening Program (HMSP)



Checklist  
To Identify the Gaps in  
**Minimum Service Standards (MSS)**  
of District Hospitals



Government of Nepal  
Ministry of Health and Population  
Curative Services Division





Government of Nepal  
**MINISTRY OF HEALTH & POPULATION**  
**Department of Health Services**  
**Management Division**



Tel No. 4-261712  
Fax No. 4-262038  
Teku  
Kathmandu, Nepal

Ref. No. 071/72

Date: 8th Feb 2015

**Few Words**

Management Division of the Department of Health Services has started to provide a flexible budget to all district hospitals to provide quality health services since this year. A sum ranging from Rs.21 lacs to 49 lacs is allocated for this purpose. In this context this book containing the *Minimum Service Standard for District Hospital* is vital and helpful to make proper utilization of this sum to uplift quality of health services. Though called minimum, but in fact, practical standard are key for the Hospital management or development committees, Medical Superintendent and other staff as it includes the major eight areas of utmost importance for any hospital.

It is hoped that the standards and guidelines at hand provide guidance to health personnel as well as to the administration to improve the quality of the health services as envisioned in the National Health Policy 2071 to make quality health services accessible through District Hospitals.

Finally, I would like to thank all partners and organizations for the contribution they have made to bring this standard in this shape.

**Dr. Bhim Acharya**  
Director  
Management Division  
DoHS, Teku





नेपाल सरकार

# स्वास्थ्य तथा जनसंख्या मन्त्रालय

चिकित्सा सेवा महाशाखा

(.....शाखा)

४२६२५५०  
४२६२८०२  
४२६२७०६  
४२६२५३५  
४२६२८६२  
४२२३५८०

फोन नं.

रामशाहपथ,

काठमाडौं, नेपाल ।

प्राप्त पत्र संख्या :-

पत्र संख्या :-

चलानी नं. :-

मिति : .....

२०७२/०१/१०

## विषय :-

यस महाशाखाद्वारा सञ्चालन गरिने अस्पताल व्यवस्थापन सुदृढीकरण कार्यक्रम (Hospital Management Strengthening Program) को लागि निर्माण गरिएको Minimum Service Standards for District Hospital प्रस्तुत गर्न पाउँदा मलाई खुशी लागेको छ ।

यस कार्यक्रम सञ्चालन गर्नको लागि यस महाशाखाको संयोजकत्वमा जनस्वास्थ्य प्रशासन अनुगमन तथा मूल्याङ्कन महाशाखा, नीति योजना तथा अन्तर्राष्ट्रिय सहयोग महाशाखा, मानव संशाधन तथा वित्तीय श्रोत व्यवस्थापन महाशाखा, प्रशासन महाशाखा, व्यवस्थापन महाशाखा, आपूर्ति व्यवस्थापन महाशाखा, राष्ट्रिय स्वास्थ्य तालिम केन्द्र र Nick Simons Institute सहितको एउटा Technical Working Group (TWG) गठन गरिएको छ । यस TWG ले विस्तृत अध्ययन गरी यस Minimum Service Standards तयार पारेको हो ।

Nick Simons Institute सँगको सहकार्यमा सञ्चालन गरिने यस कार्यक्रममा जिल्ला अस्पतालहरूद्वारा प्रवाह गरिने सेवाहरूको गुणस्तरलाई विभिन्न विषयगत खण्डहरूमा विभाजन गरी मापदण्ड निर्धारण गरिएको छ । ती हुन् : सुशासन, संस्थागत व्यवस्थापन, मानव संशाधन व्यवस्थापन, आर्थिक व्यवस्थापन, सुचना व्यवस्थापन, गुणस्तर व्यवस्थापन, चिकित्सा सेवा व्यवस्थापन र Support Services व्यवस्थापन । यस मापदण्डले अस्पताल विकास समितिका पदाधिकारीहरू र अस्पताल व्यवस्थापक तथा अन्य कर्मचारीहरूलाई अस्पतालको नेतृत्वगत, व्यवस्थापकीय र प्राविधिक कार्यदिशा प्रदान गर्नेछ, जसको फलस्वरूप सेवा प्रवाहमा व्यवसायिकता र गुणस्तरमा अभूत वृद्धि हुनेछ, भन्ने मैले आशा गरेको छु ।

यो मापदण्ड निर्माणमा सहयोग गर्नुहुने TWG का सम्पूर्ण सदस्यहरू र प्राविधिक तथा आर्थिक सहयोग गर्नुहुने Nick Simons Institute लाई धन्यवाद दिन चाहन्छु ।

डा. गुणराज लोदनी  
प्रमुख अस्पताल प्रशासक





Government of Nepal  
**MINISTRY OF HEALTH & POPULATION**  
**Department of Health Services**



Tel No. 4-261712  
Fax No. 4-262038  
Teku  
Kathmandu, Nepal

Ref. No.071/72

Date: 8th Feb 2015

**Congratulatory note**

I am happy to congratulate all district Hospitals to introduce "Minimum Service Standards for District Hospitals " which was approved by GoN (Hon. Minister) on 2071.08.21 and developed as a manual for the use in all district Hospitals. This is a milestone in curative health which tries to bring together all the existing Standards ,Protocols , guidelines, tools etc in a place to provide information on special technical competencies of the service providers to improve the quality of service.

Service standards on major eight areas (Governance, Organizational Management, HR Management, Financial management, Information management ,Quality Management , Clinical Management and Hospital support services ) are quite useful .The information are crucial to improve, maintain and sustain the quality of health services .I request Hospital Development Committees , Medical superintendents , related staffs and partner organizations to make optimum use of this Standards and contribute to National Health Policy to provide quality health services.

I am happy to thank all the partners involved to finalize this standards and specially to NSI for their effort to bring this in this shape. Contribution of Management Division and the staff involved is note worthy.

**Dr. Senendra Raj Upreti**  
Director General,DoHS





**Name of Hospital**

**Assessment Date**

**Assessed By**

- 1.
- 2.
- 3.



### List of abbreviations

admin	Administration
AFB	Acid-Fast Bacillus
AHW	Auxiliary Health Worker
amp.	Ampoule
ANM	Auxiliary Nurse Midwife
ART	Antiretroviral Therapy
ARV	Anti Rabies Vaccine
ASO	Anti-Streptolysin O
BN	Bachelor of Nursing
BT	Bleeding Time
CPR	Cardiopulmonary Resuscitation
CRP	C-Reactive Protein
CS	Cesarean Section
CT	Clotting Time
D5%	Dextrose 5%
DHO	District Health Office(r)
DLC	Differential Leukocyte Count
DNS	Dextrose Normal Saline
DoHS	Department of Health Services
ER	Emergency Room
ESR	Erythrocyte Sedimentation Rate
F/PP/R	Fasting/Postprandial/Random (blood sugar)
FCHV	Female Community Health Volunteer

FEFO	First Expiry First Out
FM	Frequency Modulation (FM radio)
GA	General Anesthesia
HBsAg	Hepatitis B Surface Antigen
HCG	Human Chorionic Gonadotropin
HCV	Hepatitis C Virus
HDC	Hospital Development Committee
HDL	High Density Lipoprotein
HIV	Human Immunodeficiency Virus
HR	Human Resources
I&D	Incision and Drainage
inj.	Injection
IU	International Units
LA	Local Anesthesia
LDL	Low Density Lipoprotein
LFT	Liver Function Test
LSCS	Lower Segment Cesarean Section
ltr.	Liter
MCV	Mean Corpuscular Volume
MDGP	Doctor of Medicine–General Practice
MoHP	Ministry of Health and Population
MP	Malaria Parasite
MRP	Manual Retraction of Placenta
MS	Medical Superintendent
MVA	Manual Vacuum Aspiration

NS	Normal Saline
oint	Ointment
OPD	Outpatient Department
OT	Operation Theatre
PCV	Packed Cell Volume
POP	Plaster of Paris
PT	Prothrombin Time
QI	Quality Improvement
RA	Rheumatoid Arthritis (factor)
RL	Ringer Lactate
RME	Routine and Microscopic Examination
SAHW	Senior Auxiliary Health Worker
SGOT	Serum Glutamic-Oxaloacetic Transaminase
SGPT	Serum Glutamic-Pyruvic Transaminase
susp	Suspension
syp.	Syrup
TABUCS	Transaction Accounting and Budget Control System
TG	Triglyceride
TLC (WBC)	Total Leukocyte Count
TV	Television
VDRL	Venereal Disease Research Laboratory
Vit	Vitamin

## Contents

### PART 1

Background	i
List of Abbreviations	a
Section 1: Governance	1
Section 2: Organizational Management	2
Section 3: Human Resource Management	2
Section 4: Financial Management	3
Section 5: Information Management	4
Section 6: Quality Management	4
Section 7: Clinical Management	5
7.1. OPD Services	5
7.2. Emergency Services	6
7.3. Pharmacy	7
7.4. Clinical Laboratory	8
7.5. Nursing/Inpatient Services	8
7.6. Maternity Services	9
7.7. Dressing and Injections, Routine Procedures	10
7.8 Surgical Services	10
7.9 Anesthesia Services	11
7.10. Diagnostic Services	11
7.11. Specialized Services	12
Section 8: Hospital Support Services Management	12
8.1. CSSD	12
8.2. Laundry	13
8.3. Housekeeping	13
8.4. Repair and Maintenance	13
8.5. Hospital Waste Management	13
8.6 Power System	14
8.7 Safety and Security	14
8.8 Transportation and Communication	14
8.9 Hospital Medical Store	15
8.10. Hospital Canteen	15
8.11. Information, Education and Communication (IEC) Materials	15

## PART 2

### List of Annexes

Annex 1: List of Staff	16
Annex 2: OPD Services	18
Annex 3: Emergency Room	20
Annex 4: List of Essential Drugs and Supplies for Pharmacy	23
Annex 5: Clinical laboratory	32
Annex 6: Inpatient Services	35
Annex 7: Dressing & Injection, Routine Procedures	40
Annex 8: Surgical Services	44
Annex 9: Anesthesia	50
Annex 10: X-ray	52
Annex 11: Central Sterile Supply Department (CSSD)	53
Annex 12: Laundry	54
Annex 13: Housekeeping	55
Annex 14: Safety and Security	56
Annex 15: Hospital Canteen	57



## Background

---

There are a number of specific standards, guidelines and tools developed to address the need to improve and strengthen the government hospitals of Nepal. Some of them provide the infrastructure standards while others focus on specific technical competencies of the service providers.

This checklist for **Minimum Service Standards for District Hospital** has been developed to bring together all the previous standards, guidelines, tools and other documents that are related to the quality of hospital services. Some hospitals that are practicing at desired level of management practices were also observed to prepare this checklist. Moreover, some additional criterions have been added in order make it more contemporary and practical. This checklist intends to focus more on 'service standards' that expects to demand the resources including human, infrastructure, and supplies required to establish a hospital fulfilling the 'Minimum Service Standards'.

Given below is a list of references taken to develop this checklist:

1. राष्ट्रिय स्वास्थ्य नीति, २०७१
2. स्वास्थ्य संस्था स्थापना, सञ्चालन तथा स्तरोन्नति मापदण्ड सम्बन्धी निर्देशिका, २०७०
3. अस्पताल विकास समिति गठन आदेशहरु
4. सुशासन (व्यवस्थापन तथा संचालन) ऐन, २०६४
5. नेपाल स्वास्थ्य सेवा नियमावली, २०५५
6. निजामती सेवा नियमावली, २०५०
7. स्वास्थ्य सेवा विभागको कार्यविधि, २०६८
8. आर्थिक कार्यविधि नियमावली, २०६४
9. लेखापालन तथा बजेट नियन्त्रण प्रणाली (TABUCS) प्रयोगकर्ता पुस्तिका, २०७०
10. स्वास्थ्य क्षेत्रका लागि सामाजिक परीक्षण कार्य सञ्चालन निर्देशिका, २०७०
11. स्वास्थ्य व्यवस्थापन सूचना प्रणाली अभिलेख तथा प्रतिवेदनसम्बन्धी निर्देशिका, २०७०
12. गुणस्तरीय स्वास्थ्य सेवा सम्बन्धी नीति, २०६४
13. स्वास्थ्य सेवाको गुणस्तर सुधार पद्धति कार्यान्वयन निर्देशिका, २०६६
14. अस्पताल फार्मसी सेवा निर्देशिका, २०७०
15. संक्रमण रोकथामका लागि सन्दर्भ पुस्तिका (जिल्ला अस्पताल तथा स्वास्थ्य संस्थाहरुको लागि), २०६६
16. क्षेत्रीय स्वास्थ्य निर्देशनालय र जिल्ला स्वास्थ्य/जनस्वास्थ्य कार्यालयहरुमा कार्यरत कर्मचारीहरुको कार्यविवरण, २०७०
17. National Medical Standard for Reproductive Health, Vol. III, 2007
18. National Safe Motherhood and Newborn Health Program District Maternal and Neonatal Health Need Assessment Toolkit Vol. 1, Hospital, 2006
19. National List of Essential Medicines, (Draft) 2010
20. Hospital QI Tools, NSI
21. Hospital management practices observed in
  - a. Primary Health Care and Resource Center, Chapagaun, Lalitpur
  - b. Gorkha Hospital, Gorkha
  - c. Lamjung Community District Hospital, Lamjung

## Introduction

---

There are eight sections in this checklist;

1. Governance
2. Organizational Management
3. Human Resources Management
4. Financial Management
5. Information Management
6. Quality Management
7. Clinical Management
8. Hospital Support Services Management

In the ***Clinical Management***, there are eleven sub-sections;

- 7.1. OPD
- 7.2. Emergency Service
- 7.3. Pharmacy
- 7.4. Clinical Laboratory
- 7.5. Nursing/inpatient Services
- 7.6. Maternity Services
- 7.7. Dressing and Injections, Routine Procedures
- 7.8. Surgical Services
- 7.9. Anesthesia Services
- 7.10. Diagnostic Services
- 7.11. Specialized Services

In the ***Hospital Support Services***, there are eleven sub-sections;

- 8.1. CSSD
- 8.2. Laundry
- 8.3. Housekeeping
- 8.4. Repair & Maintenance
- 8.5. Hospital Waste Management
- 8.6. Power System
- 8.7. Safety and Security
- 8.8. Transportation and Communication
- 8.9. Hospital Medical Store
- 8.10. Hospital Canteen
- 8.11. Information, Education and Communication (IEC)

### How to Use This Checklist

Since this checklist is developed to measure the existing situation of the hospital against the standards, it will help you to understand the gaps and make a plan to fulfill those gaps in order for your hospital to achieve the desired standard.

### Group Discussion

- Go to your hospital team.
- Read the checklist and think if your hospital really meets the given indicators.
  - This can be done either in a large group, or making smaller groups of your hospital and working in the specific sections of the checklist.

### Filling the Checklist

- Read each section carefully.
- There are list of standards and the supporting indicators for each standard.
- If your hospital meets the indicators, please mark '1' in the column of 'Score'.
- Complete this process for all the indicators.

### Scoring the checklist

- Now in each section, add the total score and convert it into total percentage, as shown below:

#### Section 5: Information Management

SN	Standards	Verification Criteria	Obtained Score	Maximum Score	
<b>A</b>	<b>Managing Medical Records</b>				
	Patient registration	5.1	Computerized patient registration is done using a standard software	0	1
	Patient referral	5.2	Referral records are kept using the standard form and register	0	1
<b>B</b>	<b>Adequate Infrastructure</b>				
	Adequate space for medical records	5.3	There is a separate room and adequate space to store the medical records	0	1
	Filing racks	5.4	All patients' records are kept in individual folders in racks/ kept digitally maintaining privacy	1	1
	Computer/Printers	5.5	There is a set of functional computer and printer to store the medical records	1	1
	Working tables and chairs	5.6	There is at least a set of one table and one chair per staff in the room.	1	1
<b>Section 5</b>			<b>Total Score</b>	<b>4</b>	
			<b>Percentage = Total Score ( 4 )/7 X 100</b>	<b>57.1%</b>	

- In the section 7 and 8, add the scores of each sub-sections, and calculate the average score of the section
- Finally, calculate the percentage of all eight sections and this gives you the **existing score of your hospital**

## Section 1: Governance

SN	Standards	Verification Criteria	Obtained Score	Maximum Score
A	Formation of Hospital Development Committee (HDC)	1.1	There is Hospital Development Committee as per the HDC formation order.	1
		1.2	The hospital has its own mission and vision statements.	1
B	Capacity building activities for HDC	1.3	All HDC members have received an orientation on HDC functions.	1
		1.4	HDC members have participated in some kind of capacity building training.	1
		1.5	HDC members have received refresher orientation at least once in the last year.	1
C	<b>Carrying out the HDC Functions</b>			
	HDC meetings are conducted at least 3 times per year.	1.6	The HDC conducts meetings at least 3 times per year.	1
	Mandatory agendas are being discussed (See the minutes of the last meeting of HDC)	1.7	<i>Hospital services and utilization</i>	1
		1.8	<i>Hospital's financial issues</i>	1
		1.9	<i>Patient rights issues</i>	1
		1.10	<i>HR issues</i>	1
		1.11	<i>Infrastructure issues</i>	1
	1.12	<i>Coordination issues with DHO/DoHS/MoHP</i>	1	
	Information about meeting agenda	1.13	Meeting agenda is circulated/made known to all the members before the meeting.	1
	Hospital's annual plan & budget has been developed and approved.	1.14	A written form of the hospital's annual plan & budget is available and approved by HDC.	1
	Establishment of a separate locker for HDC documents.	1.15	There is a separate locker for HDC documents.	1
	The hospital is accountable to the local community	1.16	Updated citizen/patient charter is available.	1
		1.17	Separate notice board of the HDC is available.	1
		1.18	The complaint box is kept in a visible place in the hospital main lobby.	1
1.19		Specific person is designated to record the complaints weekly and brings this to MS to manage.	1	
Hospital produces an Annual Report	1.20	Annual Report from HDC is available within 3 months of the end of the fiscal year.	1	
Conduct social audit	1.21	Social audit is conducted every year.	1	
<b>Section 1</b>		<b>Total Score</b>		<b>21</b>
		<b>Percentage=Total Score( )/21 X100</b>		

## Section 2: Organizational Management

SN	Standards	Verification Criteria	Obtained Score	Maximum Score
A	Clear structure of hospital departments	2.1 List of specific department showing detailed list of services/organogram is displayed.		1
B	Work division and delegation of authorities	2.2 A written statement is available specifying certain person to have been delegated the roles, responsibilities and authorities of head of department/unit.		1
C	Maintaining client flow system	2.3 A clear channel of client-flow system within the hospital has been developed (shown in a map) and practiced accordingly.		1
D	<b>Maintaining effective team work environment</b>			
	Hand-over meetings	2.4 Hand-over meetings are conducted daily.		1
	Department/unit meetings	2.5 Department/unit meetings are conducted every week.		1
	Senior staff meeting	2.6 Senior staff meetings are conducted twice a month led by the DHO and/or Medical Superintendent and minutes are kept.		1
	Grand staff meeting	2.7 A staff meeting including all staff is conducted at least once in a month and decisions are documented.		1
<b>Section 2</b>			<b>Total Score</b>	<b>7</b>
			<b>Percentage=Total Score ( )/7X100</b>	

## Section 3: Human Resource Management

SN	Standards	Verification Criteria	Obtained Score	Maximum Score
A	Practicing the personnel administration of the staff recruited by the HDC	3.1 Personnel administration policy of HDC is available (for locally hired staff) and practiced accordingly.		1
B	Maintaining the HR records	3.2 Individual records of all staff (including all contract staffs) are maintained and updated.		1
C	Job description	3.3 All staffs have job description.		1
D	Review of performance	3.4 The half-yearly review of performance of all staff is done by the line managers.		1
		3.5 Performance feedback meeting is conducted by the line managers half-yearly.		1
E	Adequate number of staff in the hospital	3.6 Hospital has fulfilled all the staff required to deliver the specific services. <b>(See Annex 1)</b>		3

<b>F</b>	<b>Motivating the staff</b>	3.7	There is some instance of hospital carrying out activities to motivate staff (staff retreat, rewards, recognition of performances, etc.) at least once a year.		1
<b>Section 3</b>			<b>Total Score</b>		<b>9</b>
			<b>Percentage =Total Score ( )/9 X100</b>		

### Section 4: Financial Management

SN	Standards	Verification Criteria	Obtained Score	Maximum Score	
<b>A</b>	<b>Formulation and approval of Annual Hospital Budget</b>	4.1	An annual hospital budget is developed incorporating the revenue from services, government grants, and supports provided by other organizations.	1	
		4.2	Internal income is reviewed during budgeting every year.	1	
<b>B</b>	<b>Service fees</b>	4.3	The service fees of the hospital are fixed by HDC every year.	1	
<b>C</b>	<b>Daily income</b>	4.4	Daily income is deposited in the bank every day.	1	
<b>D</b>	<b>Financial review</b>	4.5	Financial and physical progress review is done at least once each trimester (once in every 4 months).	1	
<b>E</b>	<b>Financial audit</b>	4.6	Externally audited accounts are available for last year.	1	
<b>F</b>	<b>Electronic database</b>				
	Hospital uses the standard software for all financial and accounting activities	4.7	The hospital uses central electronic billing system.	1	
		4.8	The hospital uses TABUCS for accounting.	1	
<b>G</b>	<b>Financial reports</b>				
	Hospital produces all financial reports timely.	4.9	The hospital produces monthly financial report.	1	
		4.10	Trimesterly financial report is produced (every 4 months).	1	
		4.11	Annual financial report is submitted to HDC.	1	
<b>H</b>	<b>Auction</b>	4.12	Auction is done yearly.	1	
<b>I</b>	<b>Clearing financial irregularities</b>	4.13	Clearance of financial irregularities is done yearly.	1	
<b>J</b>	<b>Inventory inspection</b>	4.14	Inventory inspection is done twice a year.	1	
<b>Section 4</b>			<b>Total Score</b>		<b>14</b>
			<b>Percentage =Total Score ( )/14X100</b>		

### Section 5: Information Management

SN	Standards	Verification Criteria	Obtained Score	Maximum Score
A	<b>Managing Medical Records</b>			
	Patient registration	5.1	Computerized patient registration is done using a standard software.	1
	Patient referral	5.2	Referral records are kept using the standard form and register.	1
B	<b>Adequate Infrastructure</b>			
	Adequate space for medical records	5.3	There is a separate room and adequate space to store the medical records.	1
	Filing racks	5.4	All patients' records are kept in individual folders in racks/kept digitally maintaining privacy.	1
	Computers and printers	5.5	There is a set of functional computer and printer to store the medical records.	1
	Working tables and chairs	5.6	There is at least a set of one table and one chair per staff in the room.	1
C	<b>Developing reports</b>	5.7	Hospital services utilization reports are developed and reported using the standard HMIS form (HMIS 9.4).	1
D	<b>Utilizing the information</b>	5.8	Hospital services utilization statistics are analyzed at least every trimester (once in 4 months).	1
E	<b>Conduction of social marketing</b>	5.9	Social marketing activities are being conducted (billboards, ads in FM, TV, pamphlets, banners, mobilization of FCHVs, via websites etc.) to promote hospital services.	1
F	<b>Information to patients</b>	5.10	A separate help desk/reception is available.	1
		5.11	A separate staff to run the help desk is available.	1
G	<b>Information officer</b>	5.12	An information officer is specified to communicate with patients, their relatives, media and other stakeholders.	1
H	<b>Signs for directions</b>	5.13	There are appropriate signs to show the directions of service delivery rooms.	1
<b>Section 5</b>		<b>Total Score</b>		<b>13</b>
		<b>Percentage = Total Score ( )/13X100</b>		

### Section 6: Quality Management

SN	Standards	Verification Criteria	Obtained Score	Maximum Score
A	<b>Hospital QI committee</b>			
	<b>Formation of hospital QI committee</b>	6.1	Hospital QI committee is formed.	1
	<b>Meetings of QI committee</b>	6.2	QI committee meetings are held at least every 4 months.	1
B	<b>Addressing patient rights</b>	6.3	The hospital has a statement of patient rights and responsibilities, which is posted in public places in the hospital.	1



		6.4	The hospital has a formal decision to give priority to the children and senior citizens, and is being practiced.		1
<b>C</b>	<b>Conducting client exit interview</b>	6.5	The hospital monitors patients' experiences through patient satisfaction surveys or focus group discussions conducted at least annually.		1
<b>D</b>	<b>Assessing hospital quality</b>	6.6	The hospital has assessed the hospital quality using the MSS tool at least every 4 months		1
<b>E</b>	<b>Planning to improve quality</b>	6.7	The hospital has developed specific plans to improve quality based on the MSS assessment.		1
<b>F</b>	<b>Implementing QI plan</b>	6.8	Hospital has implemented the specific activities based on the MSS plan.		1
<b>G</b>	<b>Morbidity and mortality records</b>	6.9	Morbidity and mortality records are kept securely.		1
		6.10	Each mortality in the hospital is investigated and report is kept.		1
<b>Section 6</b>			<b>Total Score</b>		<b>10</b>
			<b>Percentage = Total Score ( )/10 X 100</b>		

### Section 7: Clinical Management

SN	Standards	Verification Criteria	Obtained Score	Maximum Score
<b>7.1</b>	<b>OPD Service</b>			
<b>A</b>	Adequate time for patients	7.1.1 OPD is open from 10 AM to 3 PM.		1
<b>B</b>	Adequate health workers	7.1.2 Adequate numbers of healthcare workers are available in OPD (at least 1 doctor and 1 mid-level health worker treating 60 patients per day.)		1
<b>C</b>	Maintaining patient privacy	7.1.3 Appropriate techniques have been used to ensure the patient privacy (separate rooms, curtains hung, maintaining queuing of patients, etc).		1
<b>D</b>	Patient counseling	7.1.4 Counseling is provided to patients about the type of treatment being given and its consequences.		1
<b>E</b>	Adequate instruments and equipments	7.1.5 Instruments and equipments to carry out the OPD works are available and functioning <b>(See Annex 2.1).</b>		3
<b>F</b>	Adequate physical facilities	7.1.6 Adequate rooms and space for the practitioners and patients are available.		1
		7.1.7 Light and ventilation are adequately maintained.		1
		7.1.8 The required furniture are available <b>(See Annex 2.2).</b>		3
<b>G</b>	Duty rosters	7.1.9 Duty rosters of OPD are developed regularly and available in appropriate location.		1
<b>H</b>	Facilities for patients	7.1.10 Comfortable waiting space with sitting arrangement is available for at least 50 persons in waiting lobby.		1
		7.1.11 Safe drinking water is available in the waiting lobby throughout the day.		1
		7.1.12 There are at least four toilets with hand-washing facilities (2 for males and 2 for females).		1



		7.1.13	Hand-washing facilities are available for patients.		1
<b>I</b>	Infection prevention	7.1.14	Masks and gloves are available.		1
		7.1.15	There are colored bins for waste disposal.		1
		7.1.16	Hand-washing facility with running water and soap is available for practitioners.		1
		7.1.17	Needle/sharps disposal container is used.		1
		7.1.18	Chlorine solution is available and utilized.		1
<b>Total Score</b>					<b>22</b>
<b>Percentage = Total Score ( )/22X 100</b>					

SN	Standards	Verification Criteria	Obtained Score	Maximum Score
<b>7.2</b>	<b>Emergency Service</b>			
<b>A</b>	Adequate time for patients	7.2.1 ER is open 24 hours.		1
<b>B</b>	Adequate staff	7.2.2 Doctors/health workers/nurses are available in the ER (1 health worker and 1 nurse with a doctor on-call)		1
		7.2.3 Hospital maintains a triage system in the ER.		1
<b>C</b>	Maintaining patient privacy	7.2.4 Appropriate methods have been used to ensure patient privacy (separate rooms, curtains hung, maintaining queuing of patients, etc).		1
<b>D</b>	Adequate instruments/equipments	7.2.5 Instruments and equipments to carry out the ER works are available and functioning <b>(See Annex 3.1).</b>		3
<b>E</b>	Adequate physical facilities	7.2.6 10% of the total hospital beds are allocated and available for ER		1
		7.2.7 Light and ventilation are adequately maintained.		1
		7.2.8 Adequate furniture is available <b>(See Annex 3.2).</b>		3
<b>F</b>	Adequate medicines and supplies	7.2.9 Adequate medicines and supplies to carry out the ER works are available and functioning <b>(See Annex 3.3).</b>		3
<b>G</b>	Trauma care	7.2.10 The hospital is equipped and able to provide Primary Trauma Care.		1
<b>H</b>	Security	7.2.11 The hospital has maintained security system for ER.		1
<b>I</b>	Mass casualty management	7.2.12 The hospital has mass casualty management protocol, and all staffs are updated.		1
<b>J</b>	Mock drills	7.2.13 Hospital carries out at least one mock drill once a year.		1
<b>K</b>	Referrals	7.2.14 Referral decisions are made by doctors.		1
<b>L</b>	Duty rosters	7.2.15 Duty rosters of the ER are developed regularly and available in appropriate location.		1
<b>M</b>	Maintaining inventory	7.2.16 Separate inventories for medicines, medical supplies, and narcotics are maintained.		1
<b>N</b>	Securing narcotic drugs	7.2.17 Narcotic drugs are kept separately and securely.		1
<b>O</b>	Facilities for patients	7.2.18 Safe drinking water is available 24 hours.		1

		7.2.19	There is at least one toilet with hand-washing facilities.		1
<b>P</b>	Infection prevention	7.2.20	Staffs wear mask and gloves at work.		1
		7.2.21	There are colored bins for waste disposal.		1
		7.2.22	Hand-washing facility with running water and soap is available and being practiced by staff.		1
		7.2.23	Needle/sharps disposal container is used.		1
		7.2.24	Chlorine solution is available and utilized.		1
<b>Total Score</b>					<b>30</b>
<b>Percentage =Total Score ( )/30 X 100</b>					

SN	Standards	Verification Criteria	Obtained Score	Maximum Score	
<b>7.3</b>	<b>Pharmacy</b>				
<b>A</b>	Availability of free medicines	7.3.1 All of the free medicines provided by government are available in pharmacy ( <b>See Annex 4.1</b> ).		1	
<b>B</b>	Display of list of free medicines	7.3.2 The list of free medicines is displayed in a clearly visible place.		1	
<b>C</b>	Additional essential medicines and supplies	7.3.3 There is a list of authorized OPD medicines other than the free drugs, and are made available in the pharmacy ( <b>See Annex 4.2</b> ).		3	
		7.3.4 There is a list of authorized injections other than the free ones, and are made available in the pharmacy ( <b>See Annex 4.3</b> ).		3	
		7.3.5 There is a list of authorized medical supplies other than the free ones, and are made available in the pharmacy ( <b>See Annex 4.4</b> ).		3	
<b>D</b>	Display and storage of medicines	7.3.6 All the medicines and supplies are displayed in clean racks following alphabetical orders and generic names.		1	
<b>E</b>	Information to patients	7.3.7 Information regarding the medicines is provided to the patients.		1	
<b>F</b>	Dispensing medicines	7.3.8 Each medicine is given with written instructions on how to take them.		1	
<b>G</b>	Daily use record	7.3.9 A daily use record of each medicine and supplies is maintained.		1	
<b>H</b>	First Expiry First Out (FEFO)	7.3.10 FEFO system is maintained using standard stock book/cards.		1	
<b>I</b>	Pharmacy Inventory	7.3.11 Every month, all medicines and supplies are counted, out- of-date discarded, and tallied with the medical store.		1	
<b>J</b>	Purchase of medicines	7.3.12 Medicines are bought following the prevailing procurement rules.		1	
<b>Total Score</b>					<b>18</b>
<b>Percentage =Total Score ( )/18 X 100</b>					

SN	Standards	Verification Criteria	Obtained Score	Maximum Score
<b>7.4.</b>	<b>Clinical Laboratory</b>			
<b>A</b>	Laboratory investigations	7.4.1 All investigations mentioned in the standard list are available round the clock <b>(See Annex 5.1)</b> .		3
<b>B</b>	Supplies	7.4.2 At least three months buffer stock of laboratory supplies is available.		1
<b>C</b>	Recording and reporting	7.4.3 Standard reporting sheets are being used and all reports are recorded in a standard register (HMIS 9.3,15).		1
<b>D</b>	Instruments/ equipments	7.4.4 All physical instruments and equipments required to conduct all parameters of tests are available and functioning <b>(See Annex 5.2)</b> .		3
<b>E</b>	Infection prevention	7.4.5 Staffs wear mask and gloves at work.		1
		7.4.6 There are colored bins for waste disposal.		1
		7.4.7 Hand-washing facility with running water and soap is available and being practiced.		1
		7.4.8 All sample containers are disposables.		1
		7.4.9 Needle/sharps disposal container is used.		1
		7.4.10 Chlorine solution is available and utilized.		1
<b>F</b>	Safety	7.4.11 Laboratory has safety box for sputum AFB.		1
<b>G</b>	Communication	7.4.12 Reports are being disbursed to the patients on the same day the test is completed (except AFB and culture).		1
<b>Total Score</b>				<b>16</b>
<b>Percentage =Total Score ( )/16X100</b>				

SN	Standards	Verification Criteria	Obtained Score	Maximum Score
<b>7.5</b>	<b>Nursing Services (Inpatient Services)</b>			
<b>A</b>	Nursing station	7.5.1 Separate space for nurses' work station is available.		1
		7.5.2 There is a set of one table and three chairs in the nursing station.		1
		7.5.3 Medicines rack is available.		1
		7.5.4 Telephone facility is available.		1
		7.5.5 Admission and discharge registers are available and are being filled completely (HMIS 8.1 and 8.2).		1
<b>B</b>	Supplies	7.5.6 Furniture and instruments/equipments are available <b>(See Annex 6.1)</b> .		3
		7.5.7 Medical supplies for ward is provided <b>(See Annex 6.2)</b> .		3
<b>C</b>	Adequate physical facilities	7.5.8 There is adequate lighting and ventilation in the wards.		1
		7.5.9 There are adequate toilets for patients (1 for 6 patients).		1
		7.5.10 Safe drinking water is available 24 hours.		1

		7.5.11	Separate space is available for patient visitors ( <i>Kuruwa Ghar</i> ).		1
<b>D</b>	Communication	7.5.12	Basic information regarding admitted patients is displayed in a separate board.		1
<b>E</b>	Infection prevention	7.5.13	Mask and gloves are available and used whenever required.		1
		7.5.14	There are colored bins for waste disposal.		1
		7.5.15	Hand-washing facility with running water and soap is available and being practiced.		1
		7.5.16	Needle/sharps disposal container is used.		1
		7.5.17	Chlorine solution is available and utilized.		1
<b>Total Score</b>					<b>21</b>
<b>Percentage = Total Score ( )/21 X 100</b>					

SN	Standards	Verification Criteria	Obtained Score	Maximum Score
<b>7.6.</b>	<b>Maternity Services</b>			
<b>A</b>	Delivery service	7.6.1	A separate pre-labor ward is available.	1
		7.6.2	A standard partograph chart is being used for clinical decision making.	1
		7.6.3	A labor room is equipped with equipments, and instruments, supplies are available <b>(See Annex 6.3).</b>	3
		7.6.4	Normal and complicated deliveries (vacuum, forceps, induction, etc) are conducted 24 hours.	1
		7.6.5	Separate postnatal ward is available.	1
		7.6.6	Baby bath is done after 24 hours of delivery.	1
		7.6.7	A formally signed standard birth certificate is issued.	1
		7.6.8	Postnatal counseling is done prior to discharge.	1
<b>B</b>	Facilities for patients	7.6.9	Safe drinking water is available 24 hours.	1
		7.6.10	Separate toilet is present in labor room.	1
<b>C</b>	Infection prevention	7.6.11	Mask and gloves are available and used whenever required.	1
		7.6.12	There are colored bins for waste disposal.	1
		7.6.13	Hand-washing facility with running water and soap is available and being practiced.	1
		7.6.14	Needle/sharps disposal container is used.	1
		7.6.15	Chlorine solution is available and utilized.	1
<b>Total Score</b>				<b>17</b>
<b>Percentage = Total Score ( )/17 X100</b>				

SN	Standards	Verification Criteria	Obtained Score	Maximum Score
<b>7.7</b>	<b>Dressing and Injections, Routine Procedures</b>			
<b>A</b>	Working space	7.7.1	A separate room for routine dressing and injection service is available.	1
<b>B</b>	Furniture & general supplies	7.7.2	Adequate furniture and general supplies are available <b>(See Annex 7.1)</b> .	3
<b>C</b>	Disposable supplies	7.7.3	Adequate items of disposable supplies and medicines are available <b>(See Annex 7.2)</b> .	3
<b>D</b>	Sterile supplies	7.7.4	Adequate quantity of sterilized packs for wound dressing are available <b>(See Annex 7.3)</b> ,	3
		7.7.5	Separate containers for sterile gauze and cotton balls are available.	1
<b>E</b>	List of minimum services	7.7.6	A list of minimum dressing services and routine procedures are available <b>(See Annex 7.4)</b> .	3
<b>F</b>	Infection prevention and waste disposal	7.7.7	Separate colored waste bins are available.	1
		7.7.8	Chlorine solution is available.	1
		7.7.9	Needle/sharps disposal container is used.	1
		7.7.10	Hand-washing facility with running water and soap is available and being practiced.	1
		7.7.11	Chlorine solution is available and utilized.	1
<b>G</b>	Documentation	7.7.12	Proper records of all procedures are kept and reported.	1
			<b>Total Score</b>	<b>20</b>
			<b>Percentage = Total Score ( )/20 X100</b>	

SN	Standards	Verification Criteria	Obtained Score	Maximum Score
<b>7.8</b>	<b>Surgical Services</b>			
<b>A</b>	Operation Theatre	7.8.1	The operating room has adequate physical facilities, equipments & instruments. <b>(See Annex 8.1)</b> .	3
		7.8.2	Medicines and supplies are available <b>(See Annex 8.2)</b> .	3
<b>B</b>	List of surgical procedures	7.8.3	Listed types of surgical procedures under local, regional, spinal, and general anesthesia are done <b>(See Annex 8.3)</b> .	3
<b>C</b>	Furniture	7.8.4	Adequate and appropriate furniture for patient and staff are available <b>(See Annex 8.4)</b> .	3
<b>D</b>	Records	7.8.5	Recording is done for all surgeries.	1
<b>E</b>	Fumigation	7.8.6	Fumigation is done at least once a week in the OT.	1
<b>F</b>	Disinfection of instruments	7.8.7	High Level Disinfection (e.g. Cidex) facility is available and being practiced.	1
<b>G</b>	High Dusting	7.8.8	High dusting is done at least twice a week in OT.	1
<b>H</b>	Infection prevention and waste disposal	7.8.9	Separate colored waste bins are available.	1
		7.8.10	Mask and gloves are available and used whenever required.	1
		7.8.11	Needle/sharps disposal container is used.	1

		7.8.12	Hand-washing facility with running water and soap is available and being practiced.		1
		7.8.13	Chlorine solution is available and utilized.		1
				<b>Total Score</b>	<b>21</b>
				<b>Percentage = Total Score ( )/21X100</b>	

SN	Standards	Verification Criteria	Obtained Score	Maximum Score	
<b>7.9.</b>	<b>Anesthesia Services</b>				
<b>A</b>	Instruments/Equipments	7.9.1 Adequate instruments and equipments are available ( <b>See Annex 9.1</b> ).		3	
<b>B</b>	Anesthetic Supplies	7.9.2 Anesthetic drugs are available ( <b>See Annex 9.2</b> ).		3	
<b>C</b>	Anesthetic procedures	7.9.3 Local		1	
		7.9.4 Regional		1	
		7.9.5 Spinal		1	
		7.9.6 Sedation		1	
		7.9.7 General		1	
<b>D</b>	Documentation	7.9.8 Records of all anesthetic procedures are kept and reported		1	
				<b>Total Score</b>	<b>12</b>
				<b>Percentage = Total Score ( )/12X100</b>	

SN	Standards	Verification Criteria	Obtained Score	Maximum Score	
<b>7.10</b>	<b>Diagnostic Services</b>				
<b>A</b>	X-ray	7.10.1 X-ray service with minimum of 100 mA machine is provided round the clock ( <b>See Annex 10</b> ).		3	
		7.10.2 Lead barriers are available and used.		1	
		7.10.3 Working table and chairs are available.		1	
<b>B</b>	USG	7.10.4 Obstetrical (including emergencies) and abdominal scanning is done.		1	
		7.10.5 USG report is provided in the same day.		1	
<b>C</b>	ECG	7.10.6 ECG facility is available for OPD and ER patients.		1	
		7.10.7 Separate ECG facility is available in wards.		1	
				<b>Total Score</b>	<b>9</b>
				<b>Percentage = Total Score ( )/9X100</b>	

SN	Standards	Verification Criteria	Obtained Score	Maximum Score
<b>7.11.</b>	<b>Specialized Services</b>			
<b>A</b>	Gyne/Obs	7.11.1 Gyne/Obs service including Caesarian Section is available.		1
<b>B</b>	Other services	7.11.2 At least one specialized service is available (eye, ENT, dental, etc.).		1
<b>C</b>	Postmortem and Mortuary	7.11.3 Round-the-clock postmortem service is available.		1
		7.11.4 Separate room for mortuary is available.		1
		7.11.5 Postmortem and mortuary rooms are disinfected and kept clean.		1
		7.11.6 Mortuary van is accessible for hospital use.		1
			<b>Total Score</b>	<b>6</b>
			<b>Percentage = Total Score ( )/6 X 100</b>	
<b>Section 7</b>			<b>Section 7's Grand Total Score</b>	
			<b>Section 7's Percentage = Grand total Score ( )/192 X 100</b>	

### Section 8: Hospital Support Services Management

SN	Standards	Verification Criteria	Obtained Score	Maximum Score
<b>8.1</b>	<b>CSSD</b>			
<b>A</b>	Space	8.1.1 Separate CSSD service is available.		1
		8.1.2 There are separate rooms for dirty and clean utility.		1
<b>B</b>	Equipments/Supplies	8.1.3 Adequate equipments and supplies are available for sterilization ( <b>See Annex 11</b> ).		3
<b>C</b>	Making of disposable items	8.1.4 Gauze, cotton balls, bandages are prepared.		1
<b>D</b>	Cleaning	8.1.5 All used instruments and linens are cleaned using proper chemical/detergents in a separate room.		1
<b>E</b>	Drying	8.1.6 All instruments and equipments are dried in a separate room.		1
<b>F</b>	Packing	8.1.7 All instruments are packed in wrappers.		1
<b>G</b>	Sterilization	8.1.8 All wrapped instruments are indicated with thermal indicator tape and autoclaved in a separate room.		1
<b>H</b>	Storage	8.1.9 All sterile packs are stored in separate cupboards in a separate room.		1
<b>I</b>	Distribution	8.1.10 Sterile supplies are distributed using a proper method (basket supply system or on-demand supply system).		1
<b>J</b>	Inventory	8.1.11 All instruments and linens are recorded and inventory maintained.		1



<b>K</b>	Infection prevention	8.1.12	Staffs wear mask and gloves at work.		1
		8.1.13	There are colored bins for waste disposal.		1
		8.1.14	Hand-washing facility with running water and soap is available and being practiced.		1
		8.1.15	Chlorine solution is available and utilized.		1
<b>8.2</b>	<b>Laundry</b>				
<b>A</b>	Space	8.2.1	Separate room for laundry is available.		1
<b>B</b>	Equipments/Supplies	8.2.2	Adequate equipments and supplies are available for laundry <b>(See Annex 12)</b> .		3
<b>C</b>	Cleaning	8.2.3	All linens are washed using washing machine of capacity of at least 10 KG.		1
<b>D</b>	Drying Space	8.2.4	All linens are dried in direct sunlight.		1
<b>E</b>	Packing	8.2.5	All linens are ironed and packed properly.		1
<b>F</b>	Storage	8.2.6	Linens are properly stored in separate cupboard.		1
<b>G</b>	Distribution	8.2.7	All linens are distributed using a proper method (basket supply system or on-demand supply system).		1
<b>H</b>	Inventory	8.2.8	All linens are recorded and inventory maintained.		1
				<b>Total Score</b>	<b>27</b>
				<b>Percentage = Total Score ( )/27X 100</b>	

SN	Standards	Verification Criteria	Obtained Score	Maximum Score
<b>8.3</b>	<b>Housekeeping</b>			
<b>A</b>	Basic Supplies	8.3.1	Basic supplies are available <b>(See Annex 13)</b> .	3
<b>B</b>	Cleaning	8.3.2	The hospital premises are visibly clean. There is no litter in the hospital premises.	1
		8.3.3	All hospital toilets are clean, have no offensive smell, and stains, and are cleaned at least three times a day.	1
		8.3.4	All doors and windows of hospital are dust-free, stain-free and cleaned once a day.	1
		8.3.5	All floors of the hospital are stain-free and cleaned twice a day.	1
		8.3.6	All walls of the hospital are clean and stain-free and are painted with enamel up to 4 ft.	1
<b>C</b>	Garden	8.3.7	The hospital maintains a garden and retains beauty of surroundings.	1
<b>D</b>	Logbook	8.3.8	Cleaning logbook is maintained in every service station.	1
<b>8.4</b>	<b>Repair &amp; Maintenance</b>			
<b>A</b>	Preventive Maintenance	8.4.1	Hospital has regular preventive maintenance practices (calibration, servicing of equipments).	1
		8.4.2	While doing medical equipment repair and maintenance, biomedical engineer or person trained in biomedical equipment is there.	1
<b>8.5</b>	<b>Hospital Waste Management</b>			
<b>A</b>	Waste disposal	8.5.1	Waste bins are available within the hospital premises.	1



		8.5.2	The hospital has incinerator and burial space for waste disposal		1
<b>B</b>	Personal protection	8.5.3	Staffs use mask, gloves, boot, gown while collecting waste.		1
<b>C</b>	Public information	8.5.4	Information regarding proper use of waste bins is displayed in public places.		1
<b>8.6</b>	<b>Power System</b>				
<b>A</b>	Availability of power sources	8.6.1	The hospital has main-grid power supply with three-phase line.		1
		8.6.2	The hospital has alternate power generator of at least 50 KVA.		1
		8.6.3	Proper inventory of fuel is maintained.		1
		8.6.4	The hospital has solar system installed (at least for administrative functions).		1
				<b>Total Score</b>	<b>20</b>
				<b>Percentage = Total Score ( )/20 X100</b>	

SN	Standards	Verification Criteria	Obtained Score	Maximum Score
<b>8.7</b>	<b>Safety and Security</b>			
<b>A</b>	Hospital premises is secured	8.7.1	The hospital has security personnel round the clock.	1
		8.7.2	Security personnel are oriented about the hospital security procedures.	1
		8.7.3	A separate office for security with communication system is available.	1
		8.7.4	The hospital has done insurance of its buildings and major equipments.	1
		8.7.5	Basic amenities are available ( <b>See Annex 14</b> ).	3
		8.7.6	The hospital has replaced all mercury apparatus with other appropriate technologies.	1
		8.7.7	The hospital has fire extinguisher in all blocks.	1
		8.7.8	The hospital has installed safety alarm system.	1
<b>B</b>	Hospital has disaster mitigation system	8.7.9	Retro-fitting has been done in all buildings (if applicable).	1
		8.7.10	The hospital has prevented lightning by ensuring earthing system in electrification.	1
		8.7.11	Disaster preparedness orientation has been given to all staff at least every six months.	1
		8.7.12	Disaster mock drill is practiced at least once a year.	1
		8.7.13	Exit signs to escape during disaster are available in all places.	1
		8.7.14	An assembly zone has been specified for disaster.	1
<b>8.8.</b>	<b>Transportation and Communication</b>			
<b>A</b>	Transportation	8.8.1	24-hour ambulance service is available.	1
		8.8.2	The hospital has access to utility van.	1
<b>B</b>	Communication	8.8.3	The hospital has telephone with intercom (EPABX) network.	1

		8.8.4	Internal communication (paging) system has been installed in all major service stations.		1
		8.8.5	The hospital has installed safety alarm system		1
		8.8.6	A notice board is available and being utilized.		1
		8.8.7	There is a list of important phone numbers in the reception, ER, admin, etc.		1
				<b>Total Score</b>	<b>23</b>
				<b>Percentage = Total Score ( )/23 X100</b>	

SN	Standards	Verification Criteria	Obtained Score	Maximum Score
<b>8.9</b>	<b>Hospital Medical Store</b>			
<b>A</b>	Buffer stock in medical store	8.9.1 A separate hospital medical store with 3 months' buffer stock is available		1
<b>B</b>	Inventory	8.9.2 Electronic database system is available in the hospital medical store.		1
<b>8.10</b>	<b>Hospital Canteen</b>			
<b>A</b>	Canteen	8.10.1 The hospital has a canteen in its premises.		1
		8.10.2 A list of food items with price list approved by HDC is available and opening hours should be fixed.		1
		8.10.3 Separate dish-washing area is available and clean.		1
<b>B</b>	Food for inpatients	8.10.4 The inpatients are provided with food at least twice a day and the food contains carbohydrate, fats, proteins and at least one vegetable item.		1
<b>C</b>	Furniture and Utensils	8.10.5 Utensils are available as given in the annex. <b>(Annex 15).</b>		3
		8.10.6 All furniture and dining space is clean.		1
<b>D</b>	Inventory	8.10.7 Inventory of all assets is kept and counted once every four months.		1
<b>8.11</b>	<b>Information, Education and Communication (IEC) materials</b>			
<b>A</b>	IEC corner	8.11.1 A separate space for IEC corner is available near to main patient area.		1
		8.11.2 The corner has adequate and updated materials.		1
		8.11.3 The corner is used by the clients.		1
			<b>Total Score</b>	<b>14</b>
			<b>Percentage = Total Score ( )/14X 100</b>	
<b>Section 8</b>			<b>Section 8's Grand Total Score</b>	
			<b>Section 8's Percentage = Grand total Score ( )/ 84 X 100</b>	
<b>Grand Total Score of All Sections</b>				
<b>Existing Standard of Hospital =Grand Total ( )/350 X 100</b>				

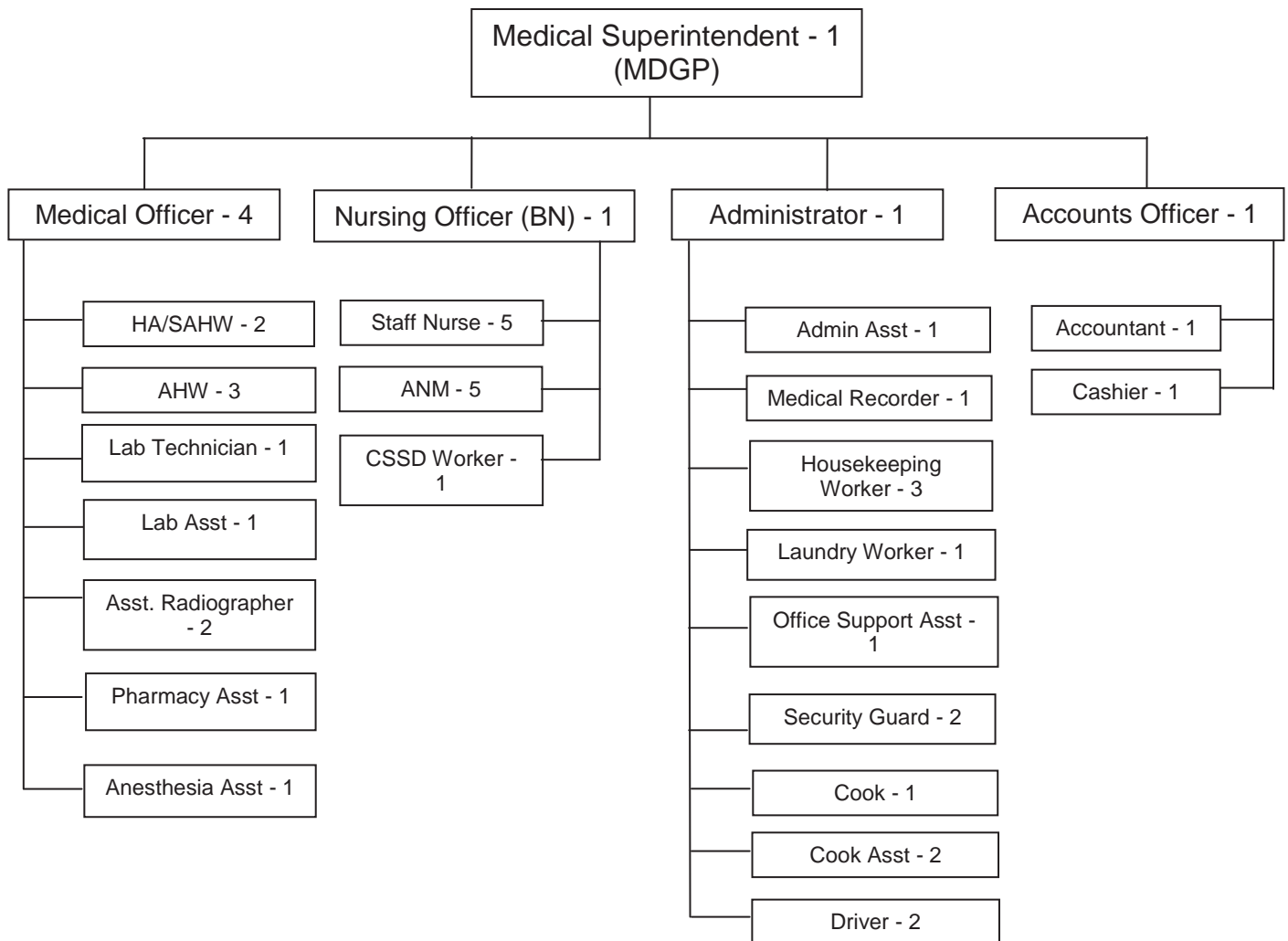
**ANNEX 1: List of Staff**

(Standard 3.6)

Department	Designation	Level	Required Numbers	Available	Not available
Medical Department	MDGP/Gynecologist/Pediatrician		1		
	Medical Officer		4		
	Health Assistant/SAHW		2		
	AHW		3		
	Radiographer		2		
	Pharmacy Assistant		1		
	Anesthesia Assistant		1		
	Lab Technician		1		
	Lab Assistant		1		
Nursing Department	Nursing Officer/Sister		1		
	Staff Nurse		5		
	ANM		5		
	CSSD Worker		1		
Administration Department	Administrator		1		
	Admin Assistant		1		
	Medical Recorder		1		
	Office Support		1		
	Receptionist		1		
	Housekeeping Worker		3		
	Laundry Worker		1		
	Security Guard		2		
	Cook		1		
	Cook's Assistant		1		
	Driver		2		
Finance Department	Accounts Officer		1		
	Accountant		1		
	Cashier		1		
<b>Total Required</b>			<b>46</b>		
			<b>Total Available</b>		
<b>Total Available Percentage = Total Available/46 X 100</b>					

Scoring Chart	
Total available staff %	Final Score
0-50	0
50-70	1
70-90	2
90-100	3
<b>Standard 3.6 Score</b>	

## Staff Structure



<b>Total Staff</b>	
Medical Department	: 16
Nursing Department	: 12
Administration Department	: 15
Finance Department	: 3
<b>Total:</b>	<b>46</b>

**ANNEX 2: OPD Services**

(Standard 7.1)

**Annex 2.1: Equipments and Instruments**

SN	Instruments/Equipments	Required No.	Score
1.	Stethoscope	For each practitioner	
2.	Sphygmomanometer (non-mercury)	For each practitioner	
3.	Thermometer (digital)	2 in each table	
4.	Knee jerk hammer	1 in each table	
5.	Otoscope	1 in each table	
6.	Flash light	1 in each table	
7.	Disposable wooden tongue depressor	As per need	
8.	Tuning fork	1 in each table	
9.	Duck's Speculum	As per need	
10.	Proctoscope	As per need	
11.	Hand sanitizer	1	
12.	Examination gloves	As per need	
<b>Total Score</b>			
<b>Total Percentage = Total Score/12 X 100</b>			

Each row gets a score of 1 if all the required number is available otherwise 0.

Scoring Chart	
Total Percentage	Score
0-50	0
50-70	1
70-90	2
90-100	3
<b>Standard 7.1.5 Score</b>	

## Annex 2.2: Furniture and General Supplies

SN	General Items	Required No.	Score
1.	Working desk	2	
2.	Working chairs	2	
3.	Patient chairs	1 in each table	
4.	Examination table	2	
5.	Curtain separator for examination beds	In each bed	
6.	Examination lamp	2	
7.	Waste bin	4	
8.	Vaseline	As per need	
9.	Masks	As per need	
10.	Shelves for papers	As per need	
11.	Reference books with shelf	As per need	
12.	Weighing scale	Adult and Child	
13.	Snellen's Chart	1	
14.	Measuring tape	2	
<b>Total Score</b>			
<b>Total Percentage = Total Score/14 X 100</b>			

Each row gets a score of 1 if all the required number is available otherwise 0.

Scoring Chart	
Total Percentage	Score
0-50	0
50-70	1
70-90	2
90-100	3
<b>Standard 7.1.8 Score</b>	

**ANNEX 3: Emergency Room**

(Standard 7.2)

**Annex 3.1: Equipments and Instruments**

SN	Equipments/Instruments	Required	Score
1.	Suction machine (each treatment room)	1	
2.	Suture set (each treatment room)	2	
3.	Ambu bag (resuscitation bag)	2	
4.	Oxygen (each treatment room)	2	
5.	ECG machine	1	
6.	BP set and stethoscope (each treatment room)	2	
7.	IV stand	As per bed	
8.	Otoscope set	1	
9.	Cart (trolley) with medicines for emergency procedures	1	
10.	Intraosseous cannulation set	1	
11.	Laryngoscope set	1	
12.	Nebulizer set	1	
13.	Water-sealed drainage set	1	
14.	Wheelchair	2	
15.	Trolley	1	
16.	Stretcher	2	
17.	N/G tube aspiration set	1	
18.	Enema set	1	
19.	Foot suction (non-electric)	1	
20.	Gastric lavage set	1	
21.	Oxygen tubes and masks	5	
22.	Hard cervical collar	3	
23.	Splints	3	
24.	Arm slings	3	
25.	Pulse oximeter	1	
26.	Glucometer	1	
27.	Ear irrigation equipments	1	
28.	Nasal speculum	1	
29.	Flashlight	2	
30.	Portable light	2	
31.	Spinal backboard	1	
		<b>Total Score</b>	
		<b>Total Percentage = Total score/31 X 100</b>	

Each row gets a score of 1 if all the required number is available otherwise 0.

Scoring Chart	
Total Percentage	Score
0-50	0
50-70	1
70-90	2
90-100	3
<b>Standard 7.2.5 Score</b>	

### Annex 3.2: Furniture and General Supplies

SN	Furniture and General Supplies	Required Quantity	Score
1.	Information board	1	
2.	Foot step	As per bed	
3.	Medical exam bed	2	
4.	Trauma bed	1	
5.	Observation bed	3	
6.	Working table	2	
7.	Chair	4	
8.	Medicine rack	1	
9.	Supplies rack	1	
10.	Waste bins	In each bed	
11.	Sharps disposal bin	As per need	
12.	Poisoning chart	1	
13.	Telephone set	1	
14.	Reference books with cupboard	1	
15.	IV stand	As per bed	
<b>Total Score</b>			
<b>Total Percentage = Total Score/15 X 100</b>			

Each row gets a score of 1 if all the required quantity is available otherwise 0.

Scoring Chart	
Total Percentage	Score
0-50	0
50-70	1
70-90	2
90-100	3
<b>Standard 7.2.8 Score</b>	



### Annex 3.3: Medicines and Supplies

SN	Name	Score
1.	Atropine injection	
2.	Local anesthetic injections	
3.	Adrenaline injection	
4.	Antihistamine injection	
5.	Hydrocortisone injection	
6.	Ranitidine/Omeperazole injection	
7.	Frusemide injection	
8.	Diclofenac injection	
9.	Hyoscine butylbromide injection	
10.	Charcoal powder	
11.	Diazepam injection	
12.	Morphine injection	
13.	Dexamethasone injection	
14.	NS	
15.	RL	
16.	D5%	
17.	Dopamine injection	
18.	D25% ampoule	
19.	DNS	
20.	IV infusion set	
21.	IV catheters 16, 18, 20, 22, 24, 26	
22.	Disposable syringes 1 ml, 3 ml, 5 ml, 10 ml, 30 ml, 50 ml	
23.	Disposable gloves 6, 6.5, 7, 7.5	
24.	Distilled water	
25.	Needle 18-25	
26.	Magnesium sulphate injection	
27.	Calcium gluconate injection	
<b>Total Score</b>		
<b>Total Percentage = Total Score/27 X100</b>		

Each row gets a score of 1 if available otherwise 0.

Scoring Chart	
Total Percentage	Score
0-50	0
50-70	1
70-90	2
90-100	3
<b>Standard 7.2.9 Score</b>	

**ANNEX 4: List of Essential Drugs and Supplies for Pharmacy**

(Standard 7.3)

**Annex 4.1: List of Free Essential Medicines\***

Name of drugs	S.N.	Forms	Strength	Score
Lignocaine	1.	Injection, 30 ml	1 % with/ without adrenaline, 2% w/v	
Paracetamol	2.	Injection 2 ml	150 mg/ml	
	3.	Tablet	500 mg	
	4.	Syrup 60 ml	125 mg/5 ml	
Aspirin	5.	Tablet	75/150/300 mg	
Ibuprofen	6.	Tablet	400 mg	
Diclofenac	7.	Injection	25 mg/ml, 75 mg/3 ml	
Indomethacin	8.	Tablet	25 mg, 50 mg	
Chlorpheniramine	9.	Tablet	4 mg	
Pheniramine	10.	Injection 2 ml	22.75 mg/ml	
Cetirizine HCl	11.	Tablet, susp	10 mg, 5 mg/5 ml	
Metronidazole	12.	Infusion	500 mg/100 ml	
	13.	Tablet	400 mg	
	14.	Syrup 60 ml	200 mg/5 ml	
Tinidazole	15.	Tablet	500 mg	
Amoxicillin	16.	Tablet	125 mg DT, 250 mg DT	
	17.	Capsule	500 mg	
Gentamycin	18.	Injection	500 mg/ ml	
Ciprofloxacin	19.	Eye/ ear drop, 5 ml	0.3% w/v	
	20.	Tablet	250 & 500 mg	
	21.	Infusion	200 mg/100 ml	
Chloramphenicol	22.	Applicap	1%	
	23.	Capsule	250 & 500 mg	
Ceftriaxone	24.	Injection	1 g	
Sulfamethoxazole + Trimethoprim	25.	Tablet	120 DT, 480 and 960 mg	
Doxycycline	26.	Capsule	100 mg	
Azithromycin	27.	Tablet	250 mg, 500 mg	
Cloxacillin	28.	Tablet/caps	125/250/500 mg	
Neomycin skin	29.	Ointment	15 gm	
Fluconazole	30.	Tablet/Oint	150 mg/15 gm	
Acyclovir	31.	Tablet/Oint	200 mg/5 gm	
Ferrous sulphate	32.	Tablet	60 mg elemental iron	
Folic Acid	33.	Tablet	5 mg	
Vitamin B complex	34.	Capsule	Therapeutic dose	

Compound solution of sodium lactate	35.	Infusion, 500 ml	Ringers' Lactate solution	
Sodium chloride	36.	Infusion, 500 ml	Normal saline	
Dextrose solution	37.	Infusion	5% w/v 500 ml	
Hydrochlorothiazide	38.	Tablet	25 mg	
Atenolol	39.	Tablet	50 mg	
Albendazole	40.	Tablet	400 mg	
Calamine lotion	41.	Lotion, 30 ml	15% w/v	
Gamma benzene hexachloride	42.	Lotion, 100 ml	Scabies	
Povidone-iodine	43.	Liquid, 500 ml	5% w/v	
Aluminium hydroxide + Magnesium hydroxide	44.	Tablet	250 mg + 250 mg	
Ranitidine	45.	Injection, 2 ml	25 mg/ml	
	46.	Tablet	150 mg	
Atropine	47.	Injection	0.6 mg/ml	
Hyoscine butylbromide	48.	Injection	20 mg/ml	
	49.	Tablet	10 mg, 20 mg	
Oral Rehydration Solutions (ORS)/Ltr	50.	Powder	WHO formula-Sachet/Ltr	
Clove oil	51.	Liquid	5 ml	
Metoclopramide	52.	Tablet	10 mg	
	53.	Injection 2 ml	5 mg/ml	
Promethazine hydrochloride	54.	Tablet	25 mg	
Charcoal (activated)	55.	Powder	10 gm/sachet	
Benzoic acid + Salicylic acid	56.	Ointment, tube, 30 g	6% + 3% w/w	
Frusemide	57.	Tablet	40 mg	
	58.	Injection 2 ml	10 mg/ml	
Amlodipine	59.	Tablet	5 mg	
Dexamethasone	60.	Injection 2 ml	4 mg/ml	
Salbutamol	61.	Tablet	4 mg	
Aminophyllin	62.	Tablet	100 mg	
Prednisolone	63.	Tabls	10 mg, 5 mg	
Pralidoxim sodium	64.	Injection	500 mg	
Phenobarbitone	65.	Tablet	60 mg	
Alprazolam	66.	Tablet	0.25 mg	
Chlorpromazine	67.	Tablet	100 mg	
Amitryptiline	68.	Tablet	10 mg, 25 mg	
Hydrocortisone	69.	Powder for injection	100 mg/vial with WFI	
Metformin	70.	Tablet	500 mg	
Adrenaline	71.	Injection	1:1000	
Digoxin	72.	Tablet	0.25 mg	
Silver sulphadiazine	73.	Cream, 25 g	1 % w/w	
Clotrimazole	74.	Skin Cream, 25 g	1 % w/w	
	75.	Pessary tab	100 mg	
Diazepam	76.	Inj	5 mg per 2 ml	

Gentian violet	77.	2 % Sol.	10 ml	
Allopurinol	78.	Tablet	500 mg	
Tetracycline	79.	Caps	250/500 mg	
Carbamazepine	80.	Tabs	200 mg, 400 mg	
Acetazolamide	81.	Tabs	250 mg	
Oxymetazoline	82.	Nasal Drop	0.1 %, 5 ml	
Levothyroxin	83.	Tablet	100 mg	
<b>Total Score</b>				
<b>Total Percentage = Total Score/ 83 X 100</b>				

\* There are 83 items for 70 essential medicines provided for free by the government.

Each row gets a score of **1** if the mentioned medicines are available otherwise **0**.

<b>Scoring Chart</b>	
<b>Total Percentage</b>	<b>Score</b>
<100	0
100	1
<b>Standard 7.3.1 Score</b>	

## Annex 4.2: List of OPD Medicines for Pharmacy

Category	SN	Name of drugs	Strength/ Form	Score
Analgesics, Antipyretics, NSAIDs	1.	Ibuprofen + Paracetamol	400 mg + 500 mg, Syp	
	2.	Ampicillin + Cloxacilin	500 mg, 250 mg, Syp	
Antibacterial	3.	Cefixime	400 mg, 200 mg, Syp	
	4.	Ofloxacin	100 mg, 200 mg, 400 mg, Syp	
	5.	Cotrimoxazole	480 mg, 960 mg, Syp	
	6.	Nitrofurantoin	50 mg, 100 mg	
	7.	Erythromycin	250 mg, 500 mg, Syp	
	8.	Nalidixic acid	250 mg, 500 mg	
		<b>Antitubercular Medicines</b>		
	9.	Ethambutol tablet	400 mg (hydrochloride)	
	10.	Isoniazid + Ethambutol tablet	150 mg + 400 mg	
	11.	Rifampicin + isoniazid + ethambutol tablet	150 mg + 75 mg + 275 mg	
	12.	Rifampicin + isoniazid + pyrazinamide + ethambutol tablet	150 mg+ 75 mg + 400 mg + 275 mg	
	13.	Isoniazid tablet	100 mg, 300 mg	
	14.	Rifampicin + isoniazid tablet	60 mg + 30 mg, 150 mg + 75 mg	
	15.	Rifampicin + isoniazid + pyrazinamide tablet	60 mg+ 30 mg + 150 mg	
	16.	Rifampicin capsule or tablet	150 mg, 300 mg	
	17.	Streptomycin powder for injection	1 g (as sulfate) in vial	
		<b>Antileprosy</b>		
	18.	Clofazimine	50 mg, 100 mg	
	19.	Dapsone	50 mg, 100 mg	
	20.	Rifampicin	150 mg, 300 mg	
Intestinal Anthelmintics	21.	Niclosamide	500 mg	
	22.	Prazequantal	150 mg, 600 mg	
Antifilariasis	23.	Diethylcarbamazipine	50 mg, 100 mg	
Antiepileptic, Anticonvulsant	24.	Valproic acid	200 mg	
	25.	Phenytoin	25 mg, 50 mg, 100 mg	
Antifungal	26.	Nystatin	100000 IU lozenge	
Antiprotozoal	27.	Diloxanide furoate	500 mg	
Antimalarial	28.	Chloroquine	150 mg, Syp, Inj.	

	29.	Primaquine	7.5 mg, 15 mg, Syp	
	30.	Sulfadoxine + Pyrimethamine	500 mg + 25 mg	
	31.	Quinine	300 mg, Inj.	
Cardiovascular Medicines	32.	Propranolol	25 mg, 50 mg	
	33.	Enalapril	5 mg, 10 mg, 10 mg	
	34.	Nifedipine	10 mg, 20 mg	
	35.	Warfarin	5 mg	
Diuretics	36.	Spironolactone	25 mg, 100 mg	
Gastrointestinal Medicines	37.	Dried Aluminium Hydroxide + Magnesium Hydroxide	250 mg+ 250 mg, Syp	
	38.	Omeperazole	20 mg	
	39.	Pantoprazole	10 mg, 20 mg	
	40.	Bisacodyl	5 mg, Suppository	
	41.	Magnesium sulphate	Syp	
	42.	Digestive Enzyme	Cap, Syp, Drop	
Bronchodilators	43.	Deriphyline	150 mg, 300 mg	
	44.	Ipratopium	Inhaler	
Dermatological Preparation	45.	Benzyl benzoate lotion		
	46.	Silver sulfadiazine cream		
	47.	Benzyl peroxide cream		
	48.	Povidine-iodine cream		
	49.	Whitefield's cream		
	50.	Fluticasone cream		
Antidiabetic	51.	Glibenclamide	5 mg	
Antispasmodic	52.	Mefenamic acid	500 mg	
	53.	Dicyclomine HCL	Drop	
Antihistamine	54.	Fexophenadine	120 mg, 180 mg, Syp	
Lipid Reducing	55.	Atorvastatine	10 mg	
Anti-Gout	56.	Colchicine	0.5 mg	
Antianemic	57.	Ferrous sulphate + Folic acid	60 mg + 400 mcg	
Vitamins and Minerals	58.	Vitamin A		
	59.	Pyridoxine	10 mg, 100 mg	
	60.	Calcium Carbonate + Vit D3		
	61.	Zinc tablet	10 mg, 20 mg	
	62.	Vit E Cap	400 mg, 600 mg	
	63.	Potassium chloride	Syp	

	64.	Thiamine	100 mg	
Psychotherapeutic Medicines	65.	Chlordiazepoxide	10 mg, 25 mg	
	66.	Fluoxetine	20 mg	
	67.	Fluphenazine	25 mg Inj.	
	68.	Lithium carbonate	300 mg	
Contraceptives	69.	Combined oral contraceptives		
	70.	DMPA	Inj	
	71.	Implants		
	72.	Intrauterine device		
	73.	Condom		
Oxytocics	74.	Methylergometrine	200 mcg Inj.	
	75.	Oxytocin	5IU/ml Inj	
	76.	Misoprostol	200 mcg	
	77.	Mefipristone + Misoprostol Combi Pack		
Oral Antiseptic Solution	78.	Chlorhexidine gargle		
Eye and Ear Preparations	79.	Beclomethasone E/E Drop		
	80.	Ear Wax Drop		
*Antiretroviral Drugs	81.	Abacavir	300 mg/600 mg	
	82.	Aciclovir BP	200 mg	
	83.	Acyclovir	50 mg/ml Inj.	
	84.	Acyclovir ointment	5% w/w (5 g/tube)	
	85.	Adrenaline Inj.	100 mg/ml	
	86.	Amphotericin B	50 mg/amp.	
	87.	Dapsone	100 mg	
	88.	Didanosine	25 mg/250 mg/400 mg	
	89.	Efavirenz	200 mg/600 mg	
	90.	Ganciclovir	500 mg	
	91.	Lamivudine	150 mg	
	92.	Lamivudine + Zidovudine	150 mg + 300 mg	
	93.	Lamivudine + Stavudine + Nevirapine	30 mg + 6 mg + 5 mg	
	94.	Lamivudine + Zidovudine + Nevirapine	150 mg + 300 mg + 200 mg	
	95.	Lopinavir + Ritonavir	200 mg + 50 mg	
	96.	Lopinavir + Ritonavir	100 mg + 25 mg	
	97.	Metronidazole	400 mg	

98.	Nevirapine	200 mg/50 mg per 5 ml	
99.	Podophylline	10-25% solution	
100.	Stavudine + Lamivudine	6+30	
101.	Tenofovir	300 mg	
102.	Tenofovir + Lamivudine	300 mg + 300 mg	
103.	Tenofovir + Lamivudine + Efavirenz	300 mg + 300 mg + 600 mg	
104.	Valganciclovir	450 mg	
105.	Zidovudine	300 mg	
106.	Zidovudine + Lamivudine	60 mg + 30 mg	
107.	Zidovudine + Lamivudine + Nevirapine	60+30+50	
<b>Total Score</b>			
<b>Total percentage = Total Score/80 X 100</b>			
<b>*(For ART site)Total percentage = Total Score/107 X 100</b>			

\* For ART hospital site only

Each row gets a score of **1** if the mentioned medicines are available otherwise **0**.

Scoring Chart	
Total Percentage	Score
0-50	0
50-70	1
70-90	2
90-100	3
Standard 7.3.3 Score	



### Annex 4.3: List of Injections for Pharmacy

S.N.	Name of Medicine	Score	S.N.	Name of Medicine	Score														
1.	Adrenaline 1 mg		37.	Mannitol 20%															
2.	Aminophylline 250 mg		38.	Mephenteramine															
3.	Ampicillin Inj		39.	Metoclopramide 10 mg															
4.	Anti-D Immunoglobulin		40.	Metronidazole Inj															
5.	ARV		41.	Morphine 10 mg															
6.	Atropine 1 mg		42.	Neurobin forte Inj															
7.	Benzathine Penicillin 12 Lakh		43.	NS 100 ml															
8.	Benzathine Penicillin 6 Lakh		44.	NS 500 ml															
9.	Calcium gluconate		45.	Oxytocin 5 IU/ml															
10.	Ceftriaxone 250 mg		46.	Pantagocine (Pentazocine)															
11.	Ceftriaxone 1 gm		47.	Pantoprazole 40 mg															
12.	Ciprofloxacin Injection		48.	Paracetamol 300 mg															
13.	Cloxacillin Inj		49.	Pethidine 50 mg/ml															
14.	Dexamethasone sodium 4 mg		50.	Pheniramine															
15.	Dextrose 10%		51.	Phenargan (Promethazine)															
16.	Dextrose 25%		52.	Phenobarbitone															
17.	Dextrose 5%		53.	Phenytoin															
18.	Diazepam 10 mg		54.	Potassium Chloride															
19.	Diclofenac Sodium 75 mg		55.	Prochlorperazine 12.5 mg/ml(Stemetil)															
20.	Digoxin 0.25 mg		56.	Ranitidine															
21.	DNS		57.	RL															
22.	Dopamine 200 mg		58.	Soda bicarbonate															
23.	Drotaverine		59.	Tetanus Toxoid 0.5 ml															
24.	Epidosin		60.	Thiamine 50 mg															
25.	Ergometrine Inj		61.	Tramadol 50 mg															
26.	Frusemide 20 mg		62.	Triamcinolone 40 mg															
27.	Gentamycin 80 mg		63.	Vitamin K															
28.	Haloperidol 5 mg		64.	Water for Injection 5 ml															
29.	Hemacil		65.	1/2 NS + 5% Dextrose															
30.	Hydrocortisone 100 mg		<b>Total Score</b>																
31.	Hyoscine butylbromide 20 mg		<b>Total Percentage = Total Score/65 X 100</b>																
32.	Ketamine 10 ml		<table border="1" style="margin-left: auto; margin-right: auto;"> <thead> <tr> <th colspan="2">Scoring Chart</th> </tr> <tr> <th>Total Percentage</th> <th>Score</th> </tr> </thead> <tbody> <tr><td>0-50</td><td>0</td></tr> <tr><td>50-70</td><td>1</td></tr> <tr><td>70-90</td><td>2</td></tr> <tr><td>90-100</td><td>3</td></tr> <tr> <td colspan="2"><b>Standard 7.3.4 Score</b></td> </tr> </tbody> </table>			Scoring Chart		Total Percentage	Score	0-50	0	50-70	1	70-90	2	90-100	3	<b>Standard 7.3.4 Score</b>	
Scoring Chart																			
Total Percentage	Score																		
0-50	0																		
50-70	1																		
70-90	2																		
90-100	3																		
<b>Standard 7.3.4 Score</b>																			
33.	Lignocaine 1%																		
34.	Lignocaine 2%																		
35.	Lignocaine 2% + Adrenaline																		
36.	Magnesium sulphate 1 gm																		

### Annex 4.4: List of Medical Supplies for Pharmacy

SN	Name of medical supply	Score
1.	Adhesive tape	
2.	Adhesive Handyplast	
3.	Betadine solution	
4.	Butterfly needle 23 G	
5.	Butterfly needle 24 G	
6.	Cervical collar	
7.	Chromic 0, 1-0, 2-0, 3-0, 4-0	
8.	Clinical thermometer	
9.	Cord clamp	
10.	Cotton roll 400 mg	
11.	Disposable needle 18, 20, 22, 24, 26	
12.	Disposable syringe 1 ml, 3 ml, 5 ml, 10 ml, 20 ml, 50 ml	
13.	Distilled water 500 ml	
14.	Easyfix Plast	
15.	Endotracheal tube (ET tube)	
16.	Female catheter	
17.	Surgical blade 10, 11, 15	
18.	Surgical gloves 6.5, 7, 7.5	
19.	Urobag	

20.	Foley catheter 14, 16, 18, 20, 22	
21.	IV cannula 16, 18, 20, 22, 24, 26	
22.	IV infusion set tube	
23.	LP needle (spinal needle 25G)	
24.	Lignocaine jelly	
25.	NG tube 10, 12, 18	
26.	Nylon suture thread 3-0	
27.	Oxygen mask	
28.	Peri Pads Rolls	
29.	Phenyl solution	
30.	POP bandage 3", 4", 6"	
31.	Pregnancy test kit	
32.	Prolene 0, 1-0, 2-0, 3-0, 4-0	
33.	Suction catheter	
34.	Use-and-throw mask	
35.	Use-and-throw gloves	
36.	Vaginal ring pessary size 2.5, 3	
37.	Vaginal ring pessary size 3	
38.	Vaseline	
<b>Total Score</b>		
<b>Total percentage = Total Score/38 X 100</b>		

Each row gets a score of 1 if the mentioned medical supplies are available otherwise 0.

Scoring Chart	
Total Percentage	Score
0-50	0
50-70	1
70-90	2
90-100	3
<b>Standard 7.3.5 Score</b>	

**ANNEX 5: Clinical Laboratory**

(Standard 7.4)

**Annex 5.1: List of Essential Laboratory Tests**

Tests	Score
<b>1. Hematology</b>	
1.1. Hemoglobin or Hematocrit	
1.2. RBC morphology	
1.3. Platelets	
1.4. TLC (WBC)	
1.5. DLC	
1.6. ESR	
1.7. PCV	
1.8. MCV	
1.9. BT	
1.10. CT	
1.11. PT	
1.12. Group and Rh Type	
1.13. Stick Blood Sugar (for ER)	
<b>2. Immunology</b>	
2.1. ASO Titre	
2.2. CRP	
<b>3. Biochemistry</b>	
3.1. Sugar F/PP/R	
3.2. Urea	
3.3. Creatinine	
3.4. Sodium	
3.5. Potassium	
3.6. Uric Acid	
3.7. Protein	
3.8. Albumin	
3.9. Amylase	
3.10. Lipid Profile	
3.10.1. Cholesterol	
3.10.2. TG	
3.10.3. HDL	
3.10.4. LDL	
3.11. LFT	
3.11.1. Bilirubin T/D	
3.11.2. Alk. Phosphatase	
3.11.3. SGPT	
3.11.4. SGOT	

3.12. Calcium	
3.13. RA Factor	
<b>4. Bacteriology</b>	
4.1. AFB Stain	
4.2. Gram's Stain	
4.3. Culture & Sensitivity	
4.3.1. Blood	
4.3.2. Urine	
4.3.3. Stool	
4.3.4. Pus	
<b>5. Parasitology</b>	
5.1. MP	
<b>6. Virology</b>	
6.1. HIV	
6.2. HBsAg	
6.3. HCV	
<b>7. Stool Exam</b>	
7.1. RME	
7.2. Stool for Occult Blood	
<b>8. Urine Exam</b>	
8.1. RME	
8.2. Acetone	
8.3. HCG (pregnancy test)	
<b>9. Miscellaneous</b>	
9.1. Semen Analysis	
9.2. VDRL	
9.3. Mantoux Test	
<b>Total Score</b>	
<b>Total Percentage = Total Score/ 52 X 100</b>	

Each row gets a score of 1 if the mentioned test is available otherwise 0.

<b>Scoring Chart</b>	
<b>Total Percentage</b>	<b>Score</b>
0-50	0
50-70	1
70-90	2
90-100	3
<b>Standard 7.4.1 Score</b>	

### Annex 5.2: List of Major Lab Equipments/Instruments

S.N.	Name of Instruments	Required Quantity	Score
1.	Microscope	1-3	
2.	Semi Auto Analyzer (biochemistry)	1	
3.	Incubator	1	
4.	Chemical balance	1	
5.	Electrolyte analyzer	1	
6.	Hot air oven	1	
7.	Refrigerator	1-2	
8.	Centrifuge	2	
9.	Counting chamber	1-2	
10.	DLC counter	1-2	
11.	Pipettes, glassware/kits	As per need	
12.	Computer with printer	1	
13.	Water bath	1	
14.	Disposable test tubes	As per need	
<b>Total Score</b>			
<b>Total Percentage = Total Score/14 X 100</b>			

Each row gets a score of 1 if all the required quantity is available otherwise 0.

Scoring Chart	
Total Percentage	Score
0-50	0
50-70	1
70-90	2
90-100	3
<b>Standard 7.4.4 Score</b>	

**ANNEX 6: Inpatient Services**

(Standard 7.5)

**Annex 6.1: Furniture and supplies per bed**

SN	General Items	Required No.	Score
1.	Patient beds (metal bed, raisable head, mechanical ratchet, 3 X 6 ft.)	per bed-1	
2.	Mattress	per bed-1	
3.	Pillow	per bed-1	
4.	Bed cover	per bed-1	
5.	Blanket with cover	per bed-1	
6.	Bed site table	per bed-1	
7.	Waste bins	1 set per room	
8.	Stools	per bed-1	
9.	Foot step	per bed-1	
10.	Medicine trolley	3	
11.	Medicine tray	3	
12.	Cardex files	25	
13.	Working table	2	
14.	Chairs	4	
15.	Cupboard	2	
16.	Shelf	1	
17.	IV stand	15	
	<b>Miscellaneous</b>		
18.	Wall clock	2	
19.	Torch with extra batteries and bulb	3	
20.	Inpatient register	As per need	
21.	Inventory records	As per need	
	<b>Equipment/Instruments</b>		
22.	BP set and stethoscope (non-mercury)	2 sets	
23.	Body thermometer	5	
24.	Fetal stethoscope	1	
25.	Baby-weighing scale	1	
26.	Self-inflating bag and mask (neonatal size)	1 set	
27.	Mucus extractor with suction tube	1	
28.	Suction machine	1	
29.	Oxygen supply	2	
30.	Scissors	3	
31.	Sponge forceps	2	
32.	Forceps jar	2	
		<b>Total Score</b>	
		<b>Total Percentage = Total Score/32 X 100</b>	

Each row gets a score of 1 if all the required quantity is available otherwise 0.

Scoring Chart	
Total Percentage	Score
0-50	0
50-70	1
70-90	2
90-100	3
<b>Standard 7.5.6 Score</b>	

### Annex 6.2: Medicines and Supplies

SN	Medicines and Supplies	Required No.	Score
1.	NS	1 box	
2.	D5%	1 box	
3.	RL	1 box	
4.	DNS	1 box	
5.	Distilled water	1 box	
6.	IV infusion set	1 box	
7.	IV catheter 18G, 20G, 22G, 24G, 26G	5 each	
8.	Gloves	1 box	
9.	Mask, cap, gowns	As per need	
10.	Disposable syringes 1 ml, 3 ml, 5 ml, 10 ml, 30 ml, 50 ml	As per need	
11.	Needle 18-25	As per need	
<b>Total Score</b>			
<b>Total Percentage = Total Score/11 X 100</b>			

Each row gets a score of 1 if all the required number is available otherwise 0.

Scoring Chart	
Total Percentage	Score
0-50	0
50-70	1
70-90	2
90-100	3
<b>Standard 7.5.7 Score</b>	

### Annex 6.3: Instruments/Equipments and Supplies for Labor Room

SN	General Items	Required No. (can be calculated as per the average no. of deliveries)	Score
1.	Delivery bed	2	
2.	Clean bed linen	2	
3.	Curtains if more than one bed	2	
4.	Clean surface (for alternative delivery position)	1	
5.	Resuscitation table	1	
6.	Light source	2	
7.	Heat source	1	
8.	Room thermometer	1	
	<b>Waste Management</b>		
9.	Container for sharps disposal	1	
10.	Receptacle for soiled linens	1	
11.	Bucket for soiled pads and swabs	2	
12.	Bowl and plastic bag for placenta	2	
	<b>Miscellaneous</b>		
13.	Wall clock	1	
14.	Flashlight with extra batteries and bulb	2	
15.	Logbook (maternity register)	1	
16.	Records	1	
	<b>Equipment</b>		
17.	BP set and stethoscope (non-mercury)	1	
18.	Body thermometer	1	
19.	Fetal stethoscope	1	
20.	Baby scale	1	
21.	Self-inflating bag air mask - neonatal size	1	
22.	Mucus extractor with suction tube	2	
23.	Vacuum set	2	
24.	Forceps	1	
	<b>Sterile Delivery Instrument Set (check each set)</b>	<b>4 sets</b>	
25.	Cord-cutting scissors	1	
26.	Artery forceps or clamp (straight 8-10 cm)	2	
27.	Gallipot (small)	1	
28.	Sponge forceps	1	
29.	Vaginal speculum (Sims)	1	
30.	Rubber sheet	1	
31.	Plain catheter	1	



32.	Placenta bowel	1	
	<b>Suture set (Check each set)</b>	<b>2 sets</b>	
33.	Needle holder	1	
34.	Sponge holder	1	
35.	Suture cutting scissors	1	
36.	Dissecting forceps (toothed and plain)	2	
	<b>Episiotomy set (check each set)</b>	<b>2 sets</b>	
37.	Episiotomy scissor	1	
38.	Needle holder	1	
39.	Suture cutting scissor	1	
40.	Dissecting forceps(toothed and plain)	2	
	<b>Supplies</b>		
41.	Utility gloves	as needed	
42.	Sterile gloves	1 box	
43.	Long plastic apron	as needed	
44.	Urinary catheter	as needed	
45.	Syringes and needles	as needed	
46.	IV tubing	as needed	
47.	Sutures for tear or episiotomy repair	1 box	
48.	Antiseptic solution (iodophors or chlorhexidine)	1 bottle	
49.	Spirit (70% alcohol)	1 bottle	
50.	Swabs	1 drum	
51.	Bleach (chlorine-based compound)	2 packets	
52.	Clean (plastic) sheet to place under the mother	4	
53.	Sanitary pads	1 box	
54.	Clean towels for drying and wrapping the baby	5	
55.	Cord ties (sterile)	1 box	
56.	Blanket for the baby	5	
57.	Baby-feeding cup	3	
58.	Impregnated bed net	2	
	<b>Drugs</b>		
59.	Inj. Oxytocin	as needed	
60.	Inj. Ergometrine	as needed	
61.	Inj. Magnesium sulphate	as needed	
62.	Inj. Calcium gluconate	as needed	
63.	Inj. Diazepam	as needed	
64.	Inj. Hydralazine	as needed	
65.	Inj. Ampicillin	as needed	
66.	Inj. Gentamycin	as needed	
67.	Inj. Metronidazole	as needed	
68.	Inj. Benzathine penicillin	as needed	
69.	Inj. Nevirapine or Zidovudine	as needed	

70.	Inj. Lignocaine	as needed	
71.	Inj. Adrenaline	as needed	
72.	Inj. Ringer lactate	as needed	
73.	Inj. Normal saline 0.9%	as needed	
74.	Inj. Dextrose 5%	as needed	
75.	Water for injection	as needed	
76.	Eye antimicrobial (1% silver nitrate or 2.5%)	as needed	
77.	Povidone-iodine)	as needed	
78.	Tetracycline 1% eye ointment	as needed	
79.	Vitamin A	as needed	
80.	Paracetamol	as needed	
<b>Total Score</b>			
<b>Total Percentage = Total Score/80 X 100</b>			

Each row gets a score of 1 if all the required number is available otherwise 0.

<b>Scoring Chart</b>	
<b>Total Percentage</b>	<b>Score</b>
0-50	0
50-70	1
70-90	2
90-100	3
<b>Standard 7.6.3 Score</b>	

## **ANNEX 7: Dressings & Injection, Routine Procedures**

(Standard 7.7)

### **Annex 7.1: Furniture and General Supplies**

<b>SN</b>	<b>General Items</b>	<b>Required No.</b>	<b>Score</b>
1.	Treatment beds	1	
2.	Mattress, pillow	1	
3.	Working table	1	
4.	Chairs	2	
5.	Storage shelves	1	
6.	Bucket with chlorine solution	1	
7.	Bucket with soap water	1	
8.	Colored waste bins with lid	1 set	
9.	Sharps disposal bin	1	
10.	Flashlight	1	
11.	Portable lamp	1	
12.	Wall clock	1	
13.	Gown	1	
<b>Total Score</b>			
<b>Total Percentage = Total Score/13 X 100</b>			

Each row gets a score of **1** if all the required number is available otherwise **0**.

<b>Scoring Chart</b>	
<b>Total Percentage</b>	<b>Score</b>
0-50	0
50-70	1
70-90	2
90-100	3
<b>Standard 7.7.2 Score</b>	

### Annex 7.2: Disposable Supplies/Medicines

SN	Supplies	Required No.	Score
1.	Disposable syringes 1 ml, 3 ml, 5 ml, 10 ml	As per need	
2.	Lignocaine hydrochloride 1%	3	
3.	Lignocaine hydrochloride 2%	3	
4.	Lignocaine hydrochloride 2% with adrenaline	3	
5.	Lignocaine hydrochloride 4%	1	
6.	Povidine-iodine	3	
7.	Hydrogen peroxide	1	
8.	Disposable gloves	As per need	
9.	Masks	As per need	
10.	Spirit	2	
11.	Cotton bandages	As per need	
12.	Silk 2-0	As per need	
13.	Chromic 2-0	As per need	
14.	Polypropylene (Prolene) 2-0, 3-0, 4-0	As per need	
15.	Needle 18-25	As per need	
<b>Total Score</b>			
<b>Total Percentage = Total Score/15 X 100</b>			

Each row gets a score of 1 if all the required number is available otherwise 0.

Scoring Chart	
Total Percentage	Score
0-50	0
50-70	1
70-90	2
90-100	3
<b>Standard 7.7.3 Score</b>	

**Annex 7.3: Sterile Supplies**

SN	General items	Required No.	Score
1.	Sterile dressing set (must be in the wrapper)	10	
2.	Sterile suture sets (must be in the wrapper)	3	
3.	Sterile suture removal set (must be in the wrapper)	2	
4.	Sterile Cheatle forceps	1	
5.	Sterile forceps jar	1	
6.	Sterile cotton balls in steel drum	1 drum	
7.	Sterile gauze pieces in steel drum	1 drum	
8.	Sterile gauze pads	1 drum	
9.	Sterile extra instruments in separate tray	As per need	
<b>Total Score</b>			
<b>Total Percentage = Total Score/9 X 100</b>			

Each row gets a score of 1 if all the required number is available otherwise 0.

<b>Scoring Chart</b>	
<b>Total Percentage</b>	<b>Score</b>
0-50	0
50-70	1
70-90	2
90-100	3
<b>Standard 7.7.4 Score</b>	

**Annex 7.4: List of Minimum Services for Dressing and Routine Procedures**

SN	Categories	Score
1.	Simple dressing change	
2.	Skin suture removals	
3.	Splinting	
4.	Multiple wound requiring additional sterile gauzes	
5.	Large wound requiring padding	
6.	Dressing change under LA	
7.	Burns up to 9%	
<b>Total Score</b>		
<b>Total Percentage = Total Score/7 X 100</b>		

Each row gets a score of 1 if the mentioned service is available otherwise 0.

Scoring Chart	
Total Percentage	Score
0-50	0
50-70	1
70-90	2
90-100	3
<b>Standard 7.7.6 Score</b>	

**ANNEX 8: Surgical Services**

(Standard 7.8)

**Annex 8.1: Equipments and Instruments for OT**

SN	General Equipments for OT	Standard Quantity	Score
1.	Wheelchair foldable, adult size	1	
2.	Stretcher	1	
3.	Patient trolley	1	
4.	OT table with stirrups	1	
5.	Wedge to position the patient	1	
6.	Mattresses w/ waterproof cover	1	
7.	Pillows w/ waterproof cover	1	
8.	Bedpan	1	
9.	Revolving stool	2	
10.	Foot step	1	
11.	Mayo table	1	
12.	Instrumental trolley	2	
13.	Bowl stand	2	
14.	Lamp (operating, fixed 8 lamp unit)	1	
15.	Lamp (operating, portable)	2	
16.	Emergency light	1	
17.	Flashlight	1	
18.	Wall clock that can be seen easily	1	
19.	Refrigerator/cold box	1	
20.	IV stand	2	
21.	Pump, suction, surgical, 200V, 2 bottles, w/access	1	
22.	Electrosurgical cautery	1	
23.	Cardiac monitor	1	
24.	Neonatal radiant warmer	1	
25.	Stethoscope	1	
26.	BP apparatus (non-mercury)	1	
27.	Fetoscope	1	
28.	Rectal thermometer	1	
29.	Drums for gloves	1	
30.	Jar w/cover (for swabs)	1	
31.	Tourniquet, latex rubber, 75 cm	1	
32.	Kidney tray (600 cc)	1	
33.	Dressing tray	1	
34.	Cheatle forceps w/jar, stainless steel	1	
35.	CS Set	As per need	
36.	Appendectomy set	As per need	

37.	MVA set	As per need	
38.	I&D Set	As per Need	
39.	Laparotomy set	1	
40.	Minor surgery set	As per need	
<b>Total Score</b>			
<b>Total Percentage = Total Score/40 X 100</b>			

Each row gets a score of 1 if the required standard quantity is available otherwise 0.

<b>Scoring Chart</b>	
<b>Total Percentage</b>	<b>Score</b>
0-50	0
50-70	1
70-90	2
90-100	3
<b>Standard 7.8.1 Score</b>	



### Annex 8.2: Medicines and Supplies for OT

SN	Emergency Drugs (including neonates) for OT	Standard Quantity for 1 patient	Score
1.	Calcium gluconate (inj)	10 ml X 2 ampoules	
2.	Magnesium sulphate (inj)	0.5 gm X 28	
3.	Oxytocin (inj)	10 ampoules	
4.	Dextrose (25%) (inj)	2 ampoules	
5.	Adrenaline (inj.)	2 ampoules	
6.	Naloxone (inj)	1 ampoule	
7.	Aminophylline (inj)	2 ampoules	
8.	Atropine sulphate (inj)	2 ampoules	
9.	Chloropheniramine	2 ampoules	
10.	Diazepam (inj)	5 ml 2 ampoules	
11.	Mephentine (inj)	1 vial	
12.	Ergometrine (inj)	2 ampoules	
13.	Frusemide (inj)	2 ampoules	
14.	Hydrocortisone	100 ml 2 vials	
15.	IV infusion Set	4	
16.	IV cannula 18	4	
17.	IV fluids-Ringer lactate/normal saline	6 bottles	
18.	Dopamine	5 vials	
19.	Hydralizine injection	5 vials	
20.	Midazolam (Inj.)	5 vials	
<b>Total Score</b>			
<b>Total Percentage = Total Score/19 X 100</b>			

Each row gets a score of 1 if the required standard quantity is available otherwise 0.

Scoring Chart	
Total Percentage	Score
0-50	0
50-70	1
70-90	2
90-100	3
<b>Standard 7.8.2 Score</b>	

### Annex 8.3: List of Minimum Surgical Procedures

SN	Categories	Score
	<b>GRADE 1</b>	
1.	Catheterization (plain and Foley's)	
2.	CPR	
3.	POP + Immobilization	
4.	Breast abscess aspiration	
5.	Lumbar puncture	
6.	Nasal packing	
7.	Debridement (wound)	
8.	I&D under LA	
9.	Skin suture <5 cm size	
10.	Foreign body removal	
11.	Gastric lavage	
12.	Joint aspiration	
	<b>GRADE 2</b>	
1.	POP and reduction	
2.	Excision of ganglion, lump, cyst, corn, lipoma under LA	
3.	Foreign body removal under LA	
4.	Debridement under LA	
5.	Cleaning and dressing under sedation	
6.	Skin suture >5 stitches	
7.	Skin traction	
8.	Gallows traction	
	<b>GRADE 3</b>	
1.	POP (Colle's, SC)	
2.	Tendon repair	
3.	Chest Tube insertion	
4.	Circumcision	
5.	Amputation under LA and sedation	
6.	MVA	
7.	Ear lobe repair	
8.	Webbed finger repair	
9.	Volar flap repair	
10.	Debridement <20 % under sedation (burn)	
11.	MRP	
12.	Repair of perineal tear	
13.	Marsupilisation	
14.	I&D under Ket (GA) of breast, deep, perineal	
15.	Reduction of dislocation under Ket (GA) plus sedation	
16.	Excision of cyst, lipoma, lump under GA	
17.	Tongue tie under Ket	
18.	Skeletal traction	
	<b>GRADE 4</b>	
1.	Obstructed hernia repair	
2.	Hydrocele	
3.	Debridement (burn) >20 % under Ket (GA)	

4.	Amputation (life-saving) under GA	
<b>GRADE 5</b>		
1.	Explorative laparotomy	
2.	Appendectomy	
3.	LSCS	
<b>Total Score</b>		
<b>Total Percentage = Total Score/45 X 100</b>		

Each row gets a score of 1 the mentioned service is available otherwise 0.

<b>Scoring Chart</b>	
<b>Total Percentage</b>	<b>Score</b>
0-50	0
50-70	1
70-90	2
90-100	3
<b>Standard 7.8.3 Score</b>	

### Annex 8.4: Furniture for OT

SN	Furniture for OT	Standard Quantity	Score
1.	Cabinets with glass for drugs/instruments	3	
2.	Table for recording and reporting notes	1	
3.	Stools	3	
4.	White Board	1	
<b>Total Score</b>			
<b>Total Percentage = Total Score/4 X 100</b>			

Each row gets a sco of **1** the standard quantity is available otherwise **0**.

Scoring Chart	
Total Percentage	Score
0-50	0
50-70	1
70-90	2
90-100	3
<b>Standard 7.8.4 Score</b>	

**ANNEX 9: Anesthesia**

(Standard 7.9)

**Annex 9.1: Instruments and Equipments for Anesthesia**

SN		Standard Qty.	Score
1.	Oxford miniature vaporizer (OMV)	1	
2.	Oxygen attachment kit	2	
3.	Corrugated anti-static breathing tube/anesthetic hose, 105 cm	2	
4.	Breathing tube connectors, male	2	
5.	Breathing tube connectors, female	2	
6.	Pediatric bellows	1	
7.	Ambu E Valves (adults and child)	2 each	
8.	Tool Kit (EMO and OMV)	1 each	
9.	Anesthetic mobile trolley, 3 drawers, 2 trays, fitted with height adjustable twin hook loop and oxygen cylinder, electric lamp holder, 960 mm (L) X 500 mm (W) X 1545 mm (H)	1	
10.	Stylet	1	
11.	Nasal cannula	10	
12.	Anesthetic face masks <ul style="list-style-type: none"> <li>• Rendell-Becker (pediatric) size 0, 1, 2, 3</li> <li>• Clear “ohmeda” or “ambu size 0, 1, 2, 3, 4, 5</li> <li>• Black, antistatic size 3, 4, 5</li> </ul>	1 each	
13.	Endotracheal tube (ETT) of different sizes	3 each	
14.	ETT introducer	2	
15.	Brushes for ETT (small, medium, large)	2 each	
16.	Magill forceps (adult and child)	1 each	
17.	Airways, reusable rubber sizes 0- 4 oral; 5-9 nasal	2 sets	
18.	Bougie (adult and child)	1 each	
19.	Oxygen tubing (clear green)	2 rolls	
20.	Spinal set (set of spinal needles 18 -25 gauge, small bowl, small 5 - 10 ml syringe needle, sponge holding forceps, kidney tray)	1	
21.	Combined pulse oximeter/ECG monitor	1	
22.	Oxygen cylinder with regulator and flow meter	1	
23.	Foot suction	1	
24.	Electric pump suction, 220 V	1	
25.	Oxygen concentrator	1	
26.	Suction catheter (newborn Fr 10 or 12 size and adult 16 size)	10 each	
27.	Laryngoscope set	1	
		<b>Total Score</b>	
		<b>Total Percentage = Total Score/27 X 100</b>	

Each row gets a score of 1 the standard quantity is available otherwise 0.

Scoring Chart	
Total Percentage	Score
0-50	0
50-70	1
70-90	2
90-100	3
<b>Standard 7.9.1 Score</b>	

### Annex 9.2: Anesthetic Drugs and Emergency Drugs

SN	Drugs	Score
1.	Aluminum hydroxide or magnesium trisilicate	
2.	Ranitidine Injection	
3.	Metoclopramide Injection	
4.	Atropine injection	
5.	Bupivacaine 0.5% heavy	
6.	Lidocaine 5% heavy	
7.	Lidocaine 2% with adrenaline and plain	
8.	Calcium gluconate	
9.	Diazepam	
10.	Epinephrine	
11.	Ephedrine/Mephenteramine	
12.	Halothane	
13.	Ketamine	
14.	Pethidine	
15.	Pentazocine	
16.	Thiopental	
17.	Suxamethorium	
18.	Pancuronium	
19.	Sodium bicarbonate	
20.	Xylocard	
21.	Beta-blockers (Metoprolol, Labatolol)	
22.	Dopamine	
23.	Isoprenaline	
24.	Morphine	
25.	Promethazine HCL	
26.	Diclofenac	
<b>Total Score</b>		
<b>Total Percentage = Total Score/26 X 100</b>		

Each row gets a score of 1 if the mentioned drugs are available otherwise 0.

Scoring Chart	
Total Percentage	Score
0-50	0
50-70	1
70-90	2
90-100	3
<b>Standard 7.9.2 Score</b>	

**ANNEX 10: X-ray**  
(Standard 7.10)

**List of X-ray Supplies**

SN	Description	Score
1.	X-Ray Film and cassettes 8 x 10	
2.	X-Ray Film and cassettes 10 x 12	
3.	X-Ray Film and cassettes 12 x 15	
4.	X-Ray Developer	
5.	X-Ray Fixer	
6.	Magnetic Gown	
<b>Total Score</b>		
<b>Total Percentage = Total Score/6 X 100</b>		

Each row gets a score of 1 if the given supplies are available otherwise 0.

Scoring Chart	
Total Percentage	Score
0-50	0
50-70	1
70-90	2
90-100	3
<b>Standard 7.10.1 Score</b>	

**ANNEX 11: Central Sterile Supply Department (CSSD)**

(Standard 8.1)

**List of Equipments and Supplies**

SN	Items	Required No.	Score
1.	Autoclave machine	2	
2.	Working table and chair	3	
3.	Thermal indicator tape	As per need	
4.	Wrappers	As per need	
5.	Buckets	5	
6.	Scrub brush	As per need	
7.	Trolley for transportation	2	
8.	Steel drums	10	
9.	Storage shelves	2	
10.	Timer	2	
11.	Cap, mask, gown	As per need	
12.	Gloves	1 box	
13.	Cotton rolls	As per need	
14.	Cotton gauze	As per need	
15.	Scissors	2	
<b>Total Score</b>			
<b>Total Percentage = Total Score/15 X 100</b>			

Each row gets a score of 1 if all the required number is available otherwise 0.

Scoring Chart	
Total Percentage	Score
0-50	0
50-70	1
70-90	2
90-100	3
<b>Standard 8.1.3 Score</b>	



## ANNEX 12: Laundry

(Standard 8.2)

### List of Equipments and Supplies

SN		Required No.	Score
1.	Washing machine	2	
2.	Buckets	5	
3.	Stirrer (wooden)	2	
4.	Boots	2 pairs	
5.	Cap, mask, gowns	As per need	
6.	Washing powder	As per need	
7.	Ironing table	1	
8.	Ironing machine	1	
9.	Storage shelves	2	
10.	Scrub brush	As per need	
11.	House gloves	As per need	
12.	Trolley for transportation	2	
13.	Chlorine solution	As per need	
<b>Total Score</b>			
<b>Total Percentage = Total Score/13 X 100</b>			

Each row gets a score of 1 if all the required number is available otherwise 0.

Scoring Chart	
Total Percentage	Score
0-50	0
50-70	1
70-90	2
90-100	3
<b>Standard 8.2.2 Score</b>	

**ANNEX 13: Housekeeping**

(Standard 8.3)

**List of Supplies**

SN	General Items	Required No.	Score
1.	Housekeeping storage room	1	
2.	Shelves	2	
3.	Cupboards	2	
4.	Additional bed covers for replacement	25	
5.	Additional pillow	10	
6.	Pillow cover	25	
7.	Blankets	10	
8.	Mosquito nets	As per need	
9.	Window screens ( <i>jaali</i> )		
10.	Soaps	As per need	
11.	Washing powder	As per need	
12.	Broom	As per need	
13.	Scrub brush	As per need	
14.	Vacuum cleaner	1	
15.	Personal protective items	As per need	
16.	Buckets	As per need	
17.	Jars	As per need	
18.	Sprinkle pipe	As per need	
19.	Flower pots	As per need	
20.	Log-book for records	1	
21.	Telephone	1	
22.	Working table and chair	1	
23.	Sickle	As per need	
24.	Spade	As per need	
25.	Shovel	As per need	
26.	Ropes	As per need	
<b>Total Score</b>			
<b>Total Percentage = Total Score/26 X 100</b>			

Each row gets a score of 1 if all the required number is available otherwise 0.

Scoring Chart	
Total Percentage	Score
0-50	0
50-70	1
70-90	2
90-100	3
<b>Standard 8.3.1 Score</b>	

**ANNEX 14: Safety and Security**

(Standard 8.7)

**List of Basic Amenities**

SN	General Items	Score
1.	Flash light	
2.	Whistle	
3.	List of important phone numbers	
4.	Key box	
5.	Emergency Alarm	
6.	Fire extinguisher	
<b>Total Score</b>		
<b>Total Percentage = Total Score/6 X 100</b>		

Each row gets a score of **1** if all the mentioned items are available otherwise **0**.

Scoring Chart	
Total Percentage	Score
0-50	0
50-70	1
70-90	2
90-100	3
<b>Standard 8.7.5 Score</b>	

**ANNEX 15: Hospital Canteen**

(Standard 8.10)

**List of Basic Amenities**

SN	General Items	Required No.	Score
1.	Dining Plate ( <i>thaal</i> )	40	
2.	Bowl ( <i>kachaura</i> )	40	
3.	Spoon	40	
4.	Glass	40	
5.	Plates	40	
6.	Pressure cooker (5 liter and 3 liter)	1 each	
7.	<i>Karai</i> (2 with different sizes)	1 each	
8.	<i>Bata</i> (3 with different sizes)	1 each	
9.	Stove (gas or wood) - smokeless	2	
10.	Buckets (3 with different sizes)	1 each	
11.	<i>Daadu</i>	2	
12.	<i>Paniyo</i>	1	
13.	Chopping board	2	
14.	Kitchen knives	3	
15.	Kettle	2	
16.	Flask	3	
17.	Cupboard	1	
18.	Shelves	1	
19.	Dining table	4	
20.	Bench/chair	20	
21.	Taps with running water facility	3	
22.	Waste bins	As per need	
23.	Lighting system (main line or Solar)	As per need	
24.	Telephone set	1	
25.	Fire extinguisher	1	
26.	Dish-washing place	1	
<b>Total Score</b>			
<b>Total Percentage = Total Score/26 X 100</b>			

Each row gets a score of 1 if all the required number is available otherwise 0.

Scoring Chart	
Total Percentage	Score
0-50	0
50-70	1
70-90	2
90-100	3
<b>Standard 8.10.5 Score</b>	



Hospital Management Strengthening Program  
 Minimum Service Standards  
 Plan of Action to Fulfill the Standard Gaps

Hospital:

Date:

Standard No.	Prioritized Gaps	Action Steps	Duration	Tentative Cost	Supports	Remarks

**Supported By**



PO Box 8975 EPC 1813  
Sanepa, Lalitpur, Nepal  
[nsi@nsi.edu.np](mailto:nsi@nsi.edu.np)  
[www.nsi.edu.np](http://www.nsi.edu.np)  
T +977 1 5551978  
F +977 1 5544179