

Population Projection for Nepal, 2001-2021

Year	Male	Female	Both Sex
2001	11,563,921	11,587,502	23,151,423
2002	11,845,495	11,855,956	23,701,451
2003	12,126,262	12,123,734	24,249,996
2004	12,406,222	12,390,837	24,797,059
2005	12,685,375	12,657,263	25,342,638
2006	12,963,722	12,923,014	25,886,736
2007	13,240,233	13,187,166	26,427,399
2008	13,515,938	13,450,643	26,966,581
2009	13,790,836	13,713,444	27,504,280
2010	14,066,638	13,977,106	28,043,744
2011	14,343,343	14,241,632	28,584,975
2012	14,621,285	14,507,232	29,128,517
2013	14,900,130	14,773,695	29,673,825
2014	15,179,879	15,041,020	30,220,899
2015	15,461,687	15,310,384	30,772,071
2016	15,745,554	15,581,787	31,327,341
2017	16,032,171	15,855,933	31,888,104
2018	16,320,848	16,132,119	32,452,967
2019	16,611,584	16,410,343	33,021,927
2020	16,904,379	16,690,606	33,594,985
2021	17,199,235	16,972,909	34,172,144

Some MDG Indicators, 2006

Indicators	Value
Prevalence of underweight children under five years %	38.6
Net enrolment ratio in primary education %	86.6
Literacy rate of 15-24 years %	79.4
Ratio of girls to boys in primary education	0.94
Ratio of girls to boys in Secondary education	0.86
Under 5 mortality (per 1000 live births)	61.0
% of 1 year old children immunized against measles	85.0
% of children fully immunized under 1 year of age	82.8
% of birth attended by skilled birth attendant	18.7
Contraceptive prevalence rate %	48.0
% of population using solid fuels	83.3
% of population with sustainable access to an improved water source	81.8
% of population with sustainable access to an improved sanitation	22.7
Poverty headcount ratio	30.8*

* Reference data refer to NLSS 2003/04, CBS
Source: Nepal Demographic and Health Survey, 2006
MOES, 2006. As cited in NepalInfo 2007, CBS

Population Census 2001 Related Publications and CDs

1. Population Census 2001, National Report (with CD)
2. Population Census 2001 by Development Region (5 Volumes)
3. Population of Nepal 2001, VDC/ Municipalities (with CD)
4. Population Census 2001, Caste/ Religion & Mother Tongue, by Development Region (5 Volumes)
5. Population Census 2001, Economic Activity Tables
6. Population of Nepal, Caste/ Religion & Mother Tongue, District Level
7. Population Census 2001: Selected Data
8. Population Census 2001: Selected Urban Table
9. Population Monograph of Nepal, Vol. I & II, 2003 (with CD)
10. Population Census 2001 Results in Gender Perspective Vol. I, II, & III (with CD)
11. "Jilla Ek Chinari", 2061 (Nepali Version)
12. Population Projections for Nepal 2001-2021
13. The Population and Socio-Economic Atlas of Nepal (with CD)
14. Mapping Nepal Census Indicators 2001 & Trends (with CD and Nepali Version)
15. Population Census 2001, Gender statistics at a Glance: A Fact Sheet
16. Population Profile of Nepal, 2007
17. Preliminary Report of Population Census 2001
18. Population Census 2001: Gender Statistics (Wall Chart)
19. Population Census 2001, Sample Data (CD only)

Other CDs

20. Population Census 1991
21. Population Census 1981
22. Population Census 1971
23. Population Census 1952/54 & 1961

Contact Address:

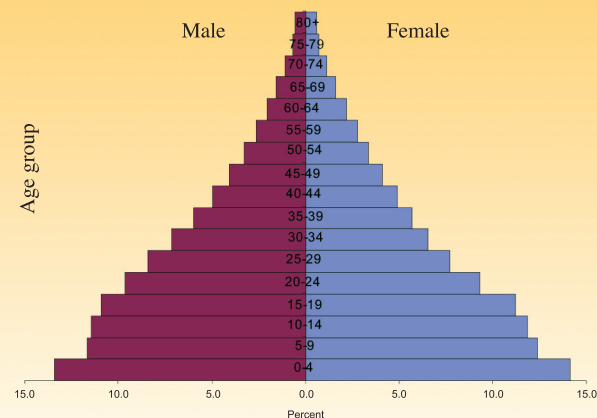
Website: www.cbs.gov.np
Email: info@cbs.gov.np,
population@cbs.gov.np
P.O. Box: 11030
Phone: 4229406, 4245946, 4245913
Fax: 4227720

"Men as Partners in Maternal Health"

"Men as Partners in Maternal Health"

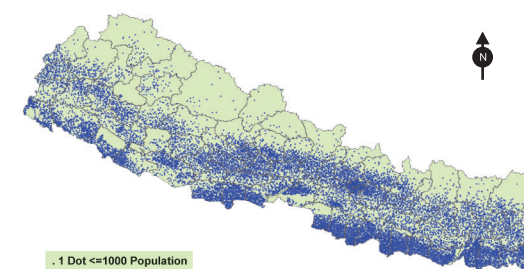
Population Profile of Nepal

(Published on the World Population Day 2007)



Age Sex Composition, 2006

Population Distribution of Nepal, 2001



Government of Nepal
National Planning Commission Secretariat
Central Bureau of Statistics
Kathmandu, Nepal



In Collaboration with UNFPA Nepal



Introduction of CBS

Central Bureau of Statistics (CBS) was established in 1958 under Statistics Act, 2015 BS as the central agency for the collection, consolidation, processing, analysis, publication and dissemination of statistics. It serves as a national statistical organization of Government of Nepal. It generates timely and reliable socio-economic statistics mainly through the operation of censuses and surveys. It carries out different household surveys and censuses regularly to assess the socio- economic condition of the country. The major tasks are decennial population census, agriculture census and quinquennial manufacturing establishment census. In addition, annual estimation of GDP, national surveys like living standards survey, labor force survey and other adhoc surveys are conducted. The role of CBS is always decisive for the effective functioning of the national statistical system as a whole. It promotes collaborative research efforts among members of academic community, data producers and users. It has a prominent role in developing statistical system and maintaining statistical standard in the country.

Population Censuses in Nepal

Population censuses are taken to obtain information on the "state of the population" at a given time. In other words, a national population census is a nation-wide counting of people at a specific point of time.

Since the first population count of 1911, nine more censuses have been conducted in Nepal. The earlier censuses of Nepal were not that precise as compared to the modern censuses. Four censuses taken before the 1952/54 census are known as "head counts". The 1952/54 census was under taken in two parts of the country in two different years. Then a synchronized census was taken in 1961. After 1961, a census has been taken in every ten years.

Census follows the specified procedures and UN recommendations from 1952/54 and collects information on all resident population of the country based on "De-Jure" count that is the usual place of residence concept. CBS conducted the last Population Census in 2001. It is the tenth decennial census in the history of census taking in Nepal. The forthcoming Population Census is schedule on June 2011. This Census will be the eleventh in a series of census taking in Nepal and it will mark a century of census taking in the country.

Population Trend and Selected Indicators of Nepal, 1971-2006

Indicators	1971	1981	1991	2001	2006
Population in Number	11,555,983	15,022,840	18,491,097	23,151,423	25,886,736
Population below 5 years	1,634,110	2,314,505	2,707,352	2,755,213	3,568,600
Population of 60 years and above	648,703	857,061	1,073,757	1,477,379	1,582,304
Annual Growth Rate (%)	2.05	2.66	2.08	2.25	
Population Density (pop/sq. km.)	79	102	126	157	176
Number of Households	2,084,062	2,584,948	3,328,721	4,253,220	
Average Household Size (persons/household)	5.6	5.8	5.6	5.4	
Sex Ratio (males per 100 females)	101.37	105.02	99.47	99.8	100.31
Child Woman Ratio [children (0-4) years per 1000 females (15-49) years]	587	656	615	549	537
Total Dependency Ratio [persons aged (0-14) and 60+years per 100 persons (15-59) years]	85.41	88.88	93.06	84.69	77.23
Singulate Mean Age at Marriage of Males	20.8	20.7	21.4	22.9	
Singulate Mean Age at Marriage of Females	16.7	17.1	18.1	19.5	
Urban Population in Number	461,938	956,716	1,682,274	3,269,451	4,322,996
Proportion of Urban Population (%)	4	6.4	9.2	14.2	16.7
Number of Urban Areas	16	23	33	58	58
Number of VDCs	3915	2912	4015	3,915	3,915
Urban Sex Ratio	116.6	115.2	108.4	106.5	106.8
Total Literacy Rate in %	13.9	23.3	39.6	54.1	
Literacy Rate of Males in %	23.6	34	54.5	65.5	
Literacy Rate of Females in %	3.9	12	25	42.8	
Crude Birth Rate (per 1000)	41.3	39.6	41.6	32.6	28.4
Crude Death Rate (per 1000)	21.4	13.5	13.3	10.0	8.7
Infant Mortality Rate (per 1000 live births)		147	97.0	64.4	48
Maternal Mortality Rate (per 100,000 live births)			515	539*	281
Total Fertility Rate (children per woman)	6.3	5.3	5.1	4.1	3.1
Life Expectancy at Birth (years)	41	49.5	54.2	60.4	63.3
Male (years)	42	50.9	55.0	60.1	62.9
Female(years)	40	48.1	53.5	60.7	63.7
Total Economic Activity Rate (%)	59.33	65.13	56.56	58.21	
Total Agriculture Holdings ('000)	1,721	2,194	2,736	3,364	
Area of Holdings ('000 ha)	1,654	2,464	2,597	2654	
Average Holding Size (area in ha./holding)	0.97	1.13	0.95	0.79	

* Reference data refer to the year 1996

Source: *Population Censuses of Nepal, Agriculture Censuses of Nepal, Demographic and Health Surveys of Nepal*