

NEPAL HEALTH FACT SHEETS 2023



Government of Nepal
Ministry of Health and Population
Department of Health Services
Kathmandu

NEPAL HEALTH FACT SHEETS 2023



Government of Nepal
Ministry of Health and Population
Department of Health Services
Kathmandu

Nepal Health Fact Sheets 2023

Copyright © Department of Health Services

Government of Nepal
Ministry of Health and Population
Department of Health Services
Management Division
IHIMS Section

+977 1 5350320
ihims_chief@dohs.gov.np
www.dohs.gov.np
www.hmis.gov.np

November 2023

Foreword

The 'Nepal Health Fact Sheets 2023' meticulously outlines the commendable achievements of health programs with specific focus in the last fiscal year 2079/80. Significant strides have been made in improving access to and utilization of diverse health services. However, it emphasizes the necessity for concerted efforts, tailored to local needs, to ensure the provision of free basic health services to all citizens. The commitment to achieving universal health coverage and meeting the health targets set forth in the Sustainable Development Goals remains paramount.

Despite national progress, addressing the equity gap among diverse population subgroups poses a formidable challenge. The disaggregated data presented in the report assumes a critical role in planning and implementing evidence-based policies and interventions, facilitating informed decision-making at all administrative levels. Special gratitude is extended to the Department of Health Services (DoHS) for their pivotal contribution. Appreciation is also extended to healthcare professionals at every tier, including grassroots workers, alongside high-level policy makers, managers, and health development partners. Their collective efforts have been instrumental in realizing these accomplishments. The Integrated Health Information Management Section team is acknowledged for their initiative and dedicated efforts in shaping this document. This report stands as a testament to our progress and serves as a roadmap for the ongoing enhancement of healthcare in Nepal.



Dr. Roshan Pokharel
Secretary
Ministry of Health and Population



Dev Kumari Guragain
Secretary
Ministry of Health and Population

Preface

It gives me immense pleasure to present the ‘Nepal Health Fact Sheets 2023’. This report presents the key achievements of health programs in the last fiscal year. The report depicts the key milestones summarizing the saga of health sector evolution in Nepal documenting the high-level health gains achieved so far. A detailed and comprehensive Annual Health Report 2079/80 (2022/23) is scheduled for January 2024.

The data presented in this report indicates the substantial progress in improving access and utilization of health services in Nepal however accelerated and tailored efforts are must according to the local needs to ensure delivery of free basic health services to all citizens as stipulated in the Constitution and to achieve the universal health coverage. Despite the progress made at the national level, reducing the equity gap among different population subgroups and leaving no one behind still remains a major challenge to us. I believe the disaggregated data presented in this report will play an important role in planning and implementation of evidence-based policies and interventions and will guide in informed decision-making.

I would like to extend my gratitude to all the healthcare professionals including those serving at the community level, Program managers, Colleagues from the Divisions, Centers and the Health development partners without whom this achievement would not have been possible.

The Department of Health Services would like to thank WHO for their technical support and USAID for their logistic assistance in preparing this Fact sheet 2023 as well as other concerned agencies and personnel who have actively contributed to this report. My appreciation goes to the Management Division and specially to Integrated Health Information Management Section team for their initiation and all their hard work in bringing this report into shape.

I am confident that the fact sheet will spark dialogue, encourage collaborative initiatives and will inspire a commitment to address the health need of Nepal in equitable and sustainable manner.

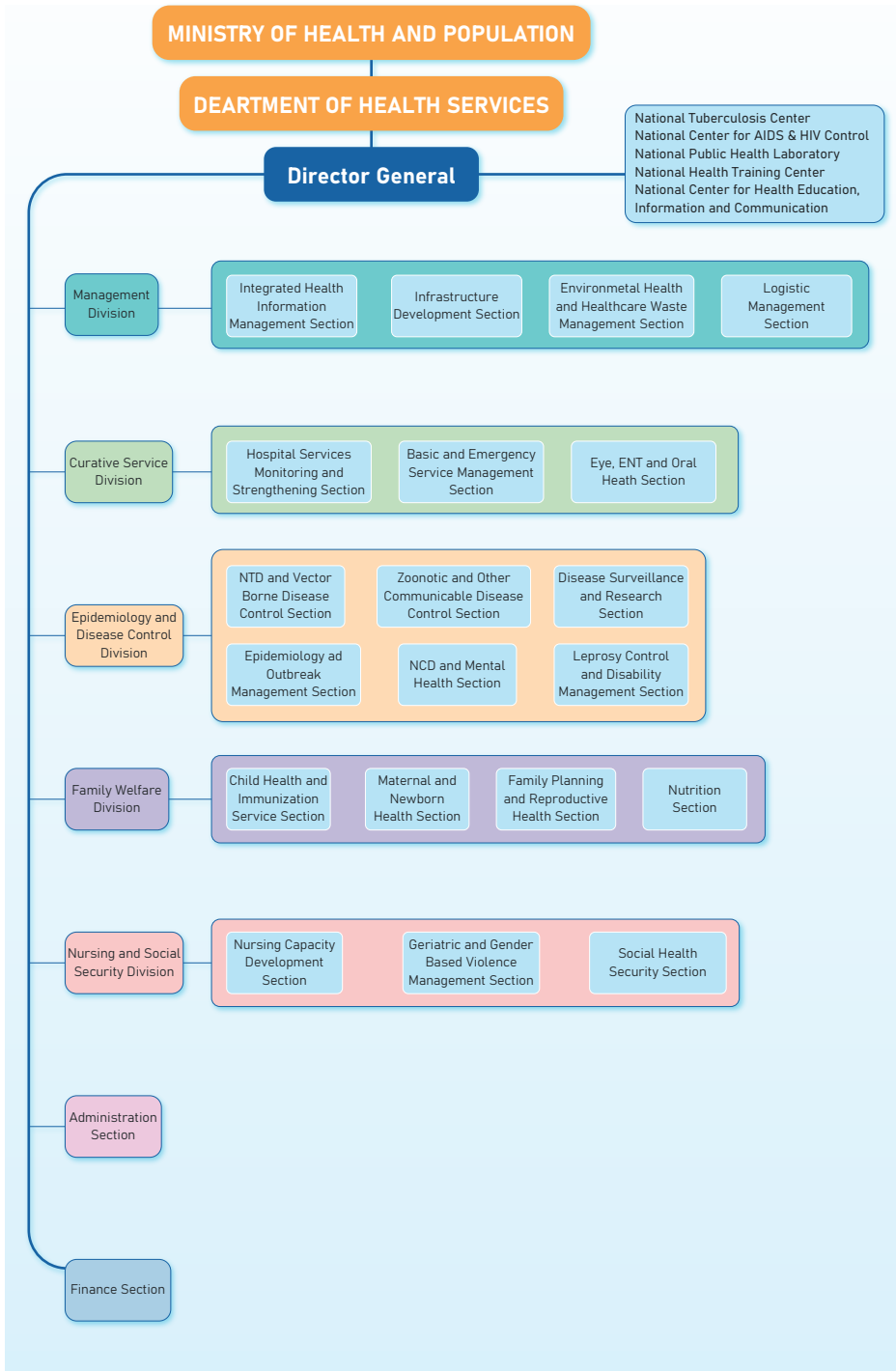


.....
Dr. Sangeeta Kaushal Mishra
Director General
Additional Health Secretary
Department of Health Services

CONTENTS

Organogram	1
Evolution of Health Sector in Nepal	2
HMIS Journey	4
Key Health Outcomes	5
Health Human Resource	9
Health Financing	10
Health Facilities	12
Reporting Status	18
Immunization Programme	22
Nutrition Programme	25
IMNCI Programme	28
Safe Motherhood Programme	30
Family Planning Programme	32
Curative Services	34
Leprosy Programme	38
NCD Programme	40
Zoonotic	41
Malaria	42
Nursing and Social Security	45
Tuberculosis Programme	47
HIV/AIDS and STI Programme	48
Health Training Programme	50
Ayurveda and Alternative Medicine	51
Performance of Drug Regularity	55
Health Insurance	56
Annex	59

Organogram



Evolution of Health Sector in Nepal

Year (AD)	Activity/Event
Till 879	Health system based on traditional medicines like Ayurveda
1816	Introduction of Smallpox vaccination
1850	Khokana Leprosy Asylum (1 st health care institution)
1889	Bir hospital - first institutionalization of modern health care system
1889	Singhadurbar Vaidya Khana - a dispensary producing Ayurvedic medicines (during the reign of King Pratap Malla (1698-1731 BS))
1925	Tri-Chandra Military Hospital
1936	Rajkiya Ayurvedic Bidyalaya
1954	Nepal Malaria Control Program was launched
1954	Tansen United Mission Hospital
1957	Civil Medical School
1958	National Malaria Eradication Program was launched
1959	Paropakar Maternity and Women's Hospital
1974	Nepal Eye Hospital established as first eye hospital
1975	Declared to establish 1462 health posts throughout the country
1978	Primary health care system was adopted by Government of Nepal
1978	Health training center was started to provide in-service training
1980	Initiated actions to create an integrated health system
1982	Tribhuvan University Teaching Hospital
1982	Patan Hospital - Shanta Bhawan Hospital merged with Lapitpur Hospital
1988	Female Community Health Volunteer Programme
1989	Shree Birendra Hospital
1991	National Health Policy (First)
1992	B.P Koirala Memorial Cancer Hospital
1993	National Health Training Center along with five regional health training centers
1994	Health management information system (HMIS) introduced
1995	National Drug Policy
1995	Shahid Gangalal National Heart Center
1996	National Mental Health Policy
1996	National Ayurveda Health Policy

1996	Legislation to make hospital autonomous body started
1998	National Safe Motherhood Policy
2000	Multi-dose Vial policy
2000	Policy on Multi-dose Vaccine Vials
2001	National Medicine Policy
2002	Safe Abortion Act
2003	National Safe Abortion Policy
2004	Health sector strategy: An agenda for reform
2004	Healthcare Technology Policy
2004	National Nutrition Policy
2006	National Skill Birth Attendant Policy
2007	Policy on Quality Assurance in Health Care Services
2010	National Policy on HIV and STI
2010	National Health Research Policy
2012	National Health Communication Policy
2013	National Health Insurance Policy
2013	National Oral Health Policy
2013	National Health Laboratory Policy
2014	National Health Policy
2014	National Blood Transfusion Policy
2014	National Population Policy
2014	Urban Health Policy
2015	Constitution of Nepal
2015	Nepal Health Sector Strategy (2025-2020)
2017	Disability Prevention Policy
2018	Public Health Service Act
2018	National Medical Education Act
2018	Safe Motherhood and Reproductive Health Riths Act
2019	National Health Policy
2020	Public Health Service Regulation
2022	Nepal Health Sector Strategic Plan (2023-2030)
2022	National Health Financing Strategy (2023-33)
2022	National Nursing and Midwifery Strategy, 2022

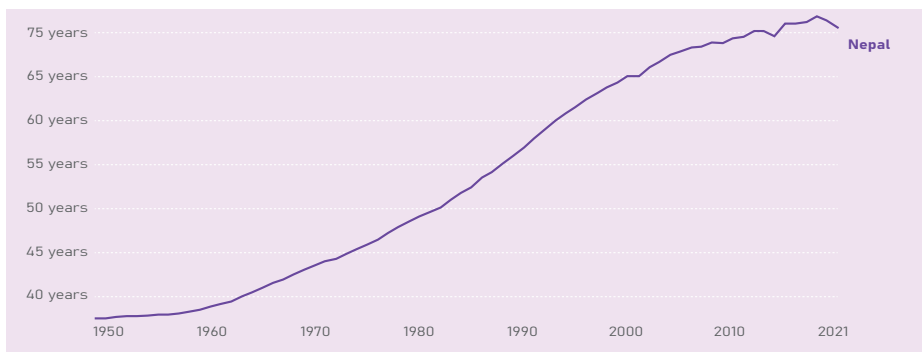
Health Management Information System (HMIS) Journey

Year (BS)	Activity/Event
2050	Integrated health management information system (HMIS) established under policy, Planning and Monitoring Division of Department of Health services
2052	HMIS Implementation
2054	Minor revisions in HMIS Tools
2058	ICD 10 training started through BPKIHS
2064	HMIS software developed for reporting by districts
	Health Sector Information System-National Strategy (HSIS-NS) developed and piloted for a duration of four years (2064-68 BS) in three districts (Lalitpur, Parsa and Rupandehi)
2066	HMIS recording and reporting tools, hospital monitoring sheet, monthly monitoring and annual performance worksheets for health facilities updated
2067	Health GIS conceptualized and Health Facility Mapping Survey 2011 conducted
2068	Online Data entry of District Integrated monthly Reporting
2069	MS Access based online reporting system initiated
2069	HMIS published Social Inclusion in Health Service Utilization report
2070	MoHP and partners team visited Chandigadh and Simla, India to observe DHIS2 and EMR
2070	HMIS revision integrating HSIS and HMIS
2071	Introduction of District Health Information System (DHIS2)
	Introduced web-based online data entry
2073	All districts (public) health offices started HMIS online reporting through DHIS2 platform
2076	HMIS online reporting via DHIS2 platform expanded to 753 local levels
2079	HMIS tools revision primarily to facilitate BHS monitoring

Key Health Outcomes

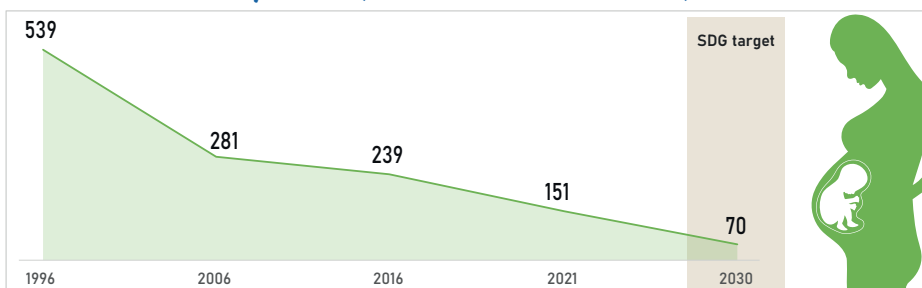
Life Expectancy, 1950 to 2021

The period life expectancy at birth, in a given year



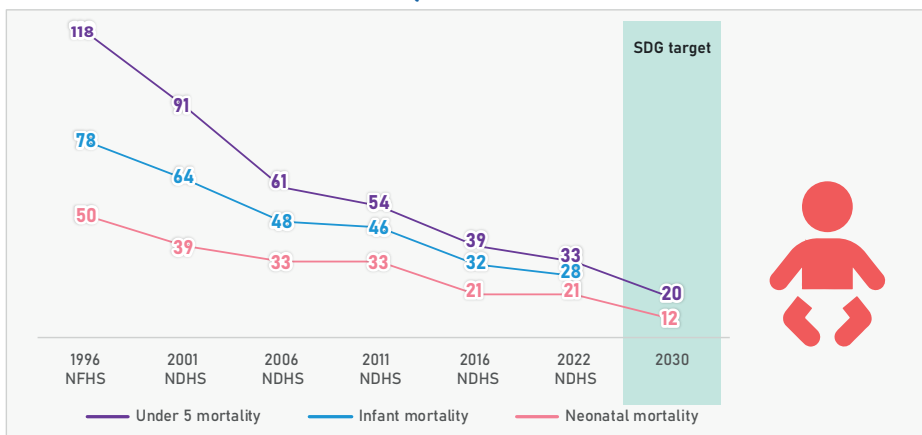
Source: UN WPP (2022); Zijdeman et al. (2015); Riley (2005)

Maternal Mortality Ratio (Per 100,000 Live Births)

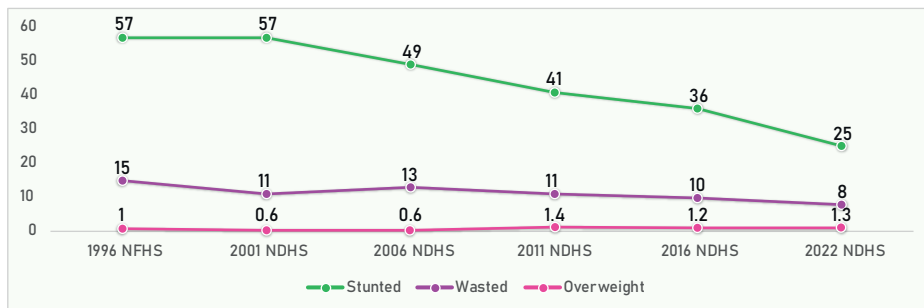


Source: NDHS 1996-2016, Population Census-NMMS 2021

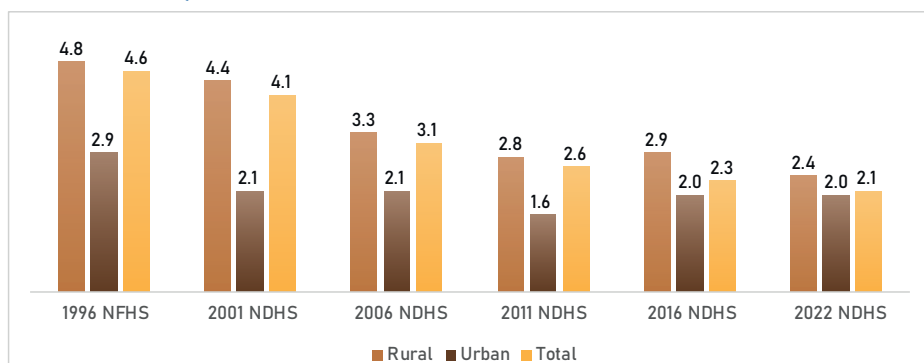
Trends in Childhood Mortality



Nutritional Status of Children – Stunting, Wasting and Overweight

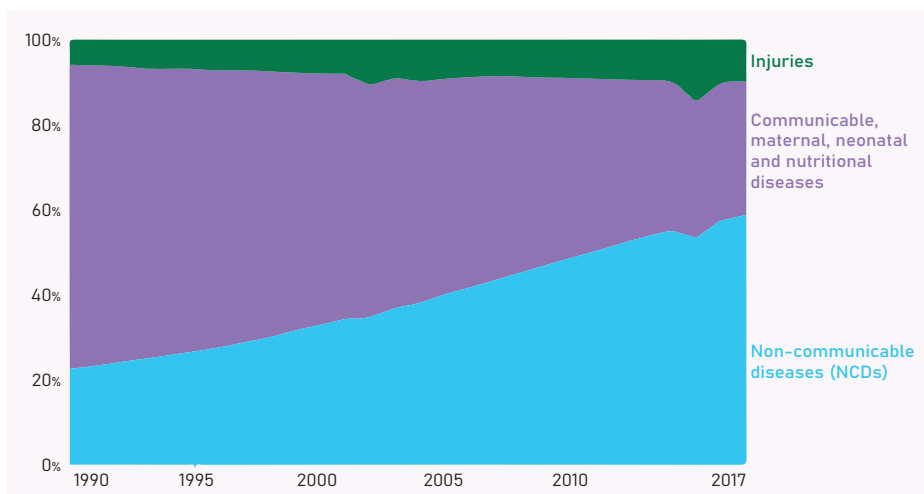


Total Fertility Rate



Total Disease Burden by Cause, Nepal, 1990 to 2017

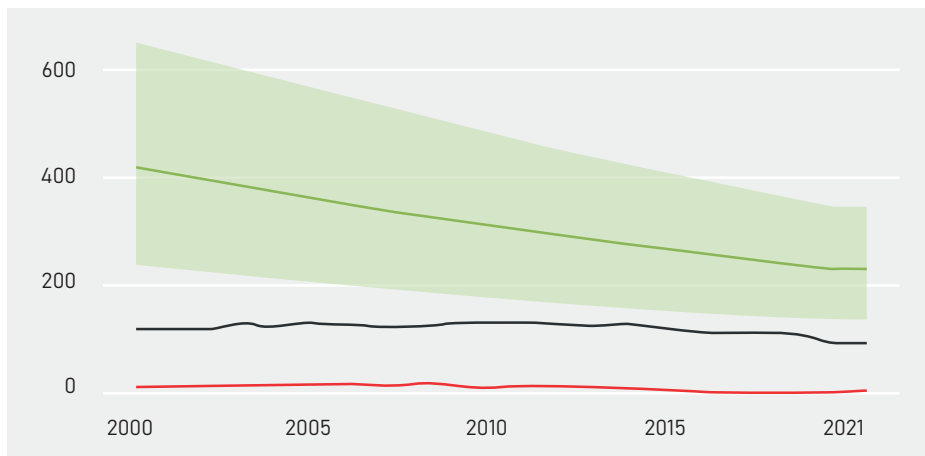
Total disease burden measured as Disability-Adjusted Life Years (DALYs) per year. DALYs measure the total burden of disease - both from years of life lost due to premature death and years lived with a disability. One DALY equals one lost year of healthy life.



Source: IHME, Global Burden of Disease

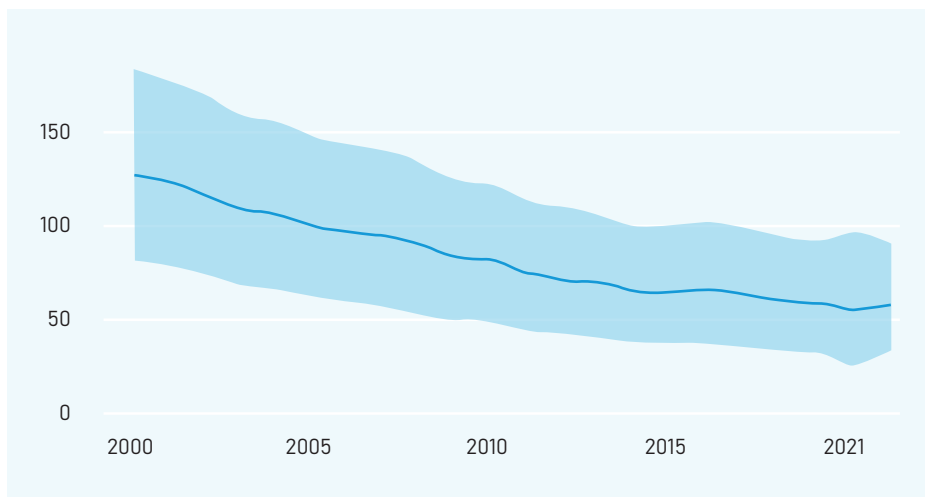
Trajectory of TB Incidence, 2000- 2021

Incidence, New and relapse TB cases notified, HIV-positive TB incidence
(Rate per 100 000 population per year)



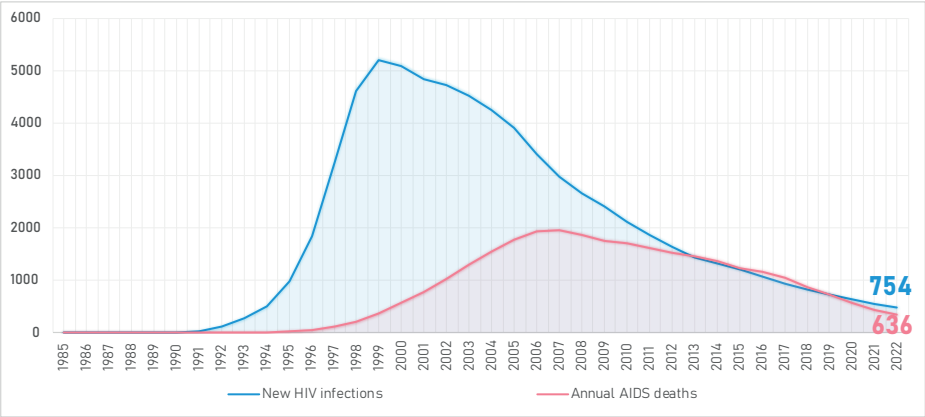
Source: Report of the 2023 Nepal TB Program Review, 2023

Trajectory of TB Mortality, 2000-2021



Source: Report of the 2023 Nepal TB Program Review, 2023

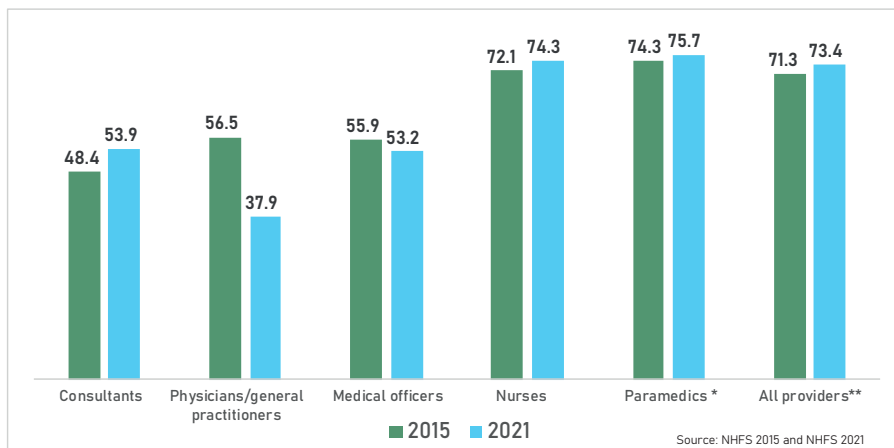
Trend of New HIV Infections and Deaths 2019 (1985-2020)



Source: NCASC, 2021 Fact Sheet

Health Human Resource

Percentages of MoHP Sanctioned Posts Filled by Provider Category



Percentages of MoHP Sanctioned Posts Filled by Provider Category, Facility Type and Province

Background characteristics	Consultants	Physicians/general practitioners	Medical officers	Nurses	Paramedics *	All providers**
Facility type						
Federal/provincial-level hospitals	53.9	42.3	58.5	78.2	73.4	68.8
Local-level hospitals	-	22.7	30.7	59.8	81.8	69.7
PHCCs	-	-	44.4	52.6	81.9	74.7
BHS centres	-	-	0	0	75.2	75.1
HPs	-	-	0	0	76.8	76.7
Urban Health Centres	-	-	-	-	18.7	18.7
CHUs	-	-	-	-	7.8	7.8
Province						
Koshi	23.4	50	33.3	73.3	67.5	65.2
Madhesh	34	44.4	65.9	62.3	85.2	82.7
Bagmati	77.2	50	71.8	88.6	83.5	82.6
Gandaki	52.1	37.5	36.6	57	59.2	57.2
Lumbini	48.8	33.3	32.4	53.2	73.6	68.8
Karnali	0	0	23.8	58.6	71.8	69.7
Sudurpaschim	16.7	12.5	32.8	69.9	68.8	65.5
Total	53.9	37.9	53.2	74.3	75.7	73.4

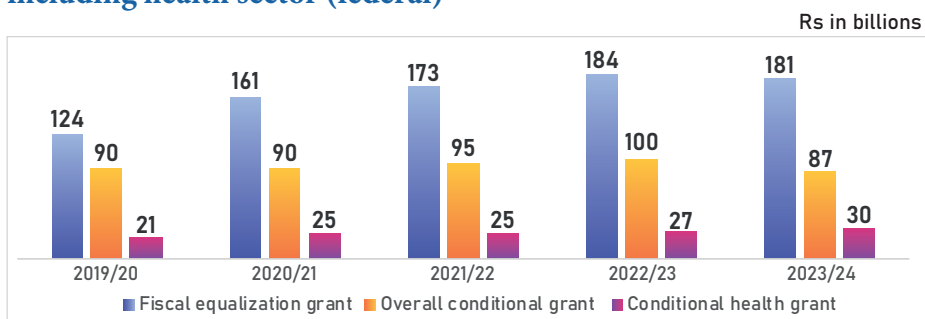
Source: NHFS 2021

*Includes health assistant, auxiliary health worker, senior auxiliary health worker, public health inspector, public health officer, auxiliary nurse midwife, laboratory technologist, laboratory officer, laboratory technician, laboratory assistant, radiographer, and dark room assistant

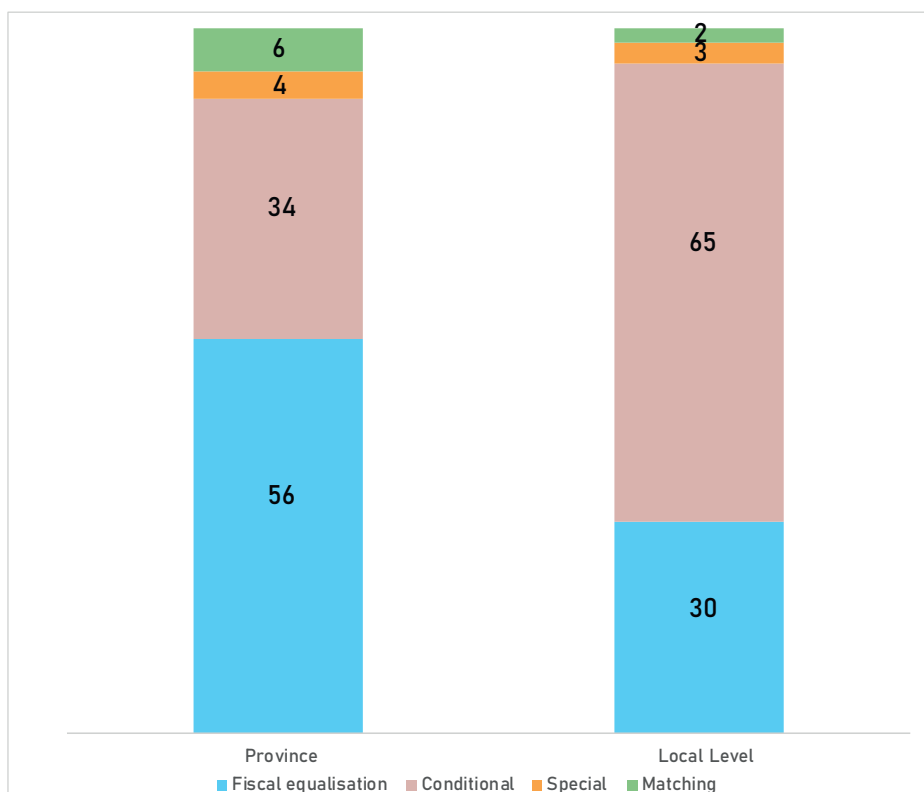
** Includes consultants, physicians/general practitioners, medical officers, nurses, and paramedics

Health Financing

Trend on Inter Governmental Fiscal Transfer, including health sector (federal)



Composition of Inter-Governmental Fiscal Transfer for Provincial and Local Levels (all sectors) for the fiscal year 2022/23 (%)



Source: Red MoF Book

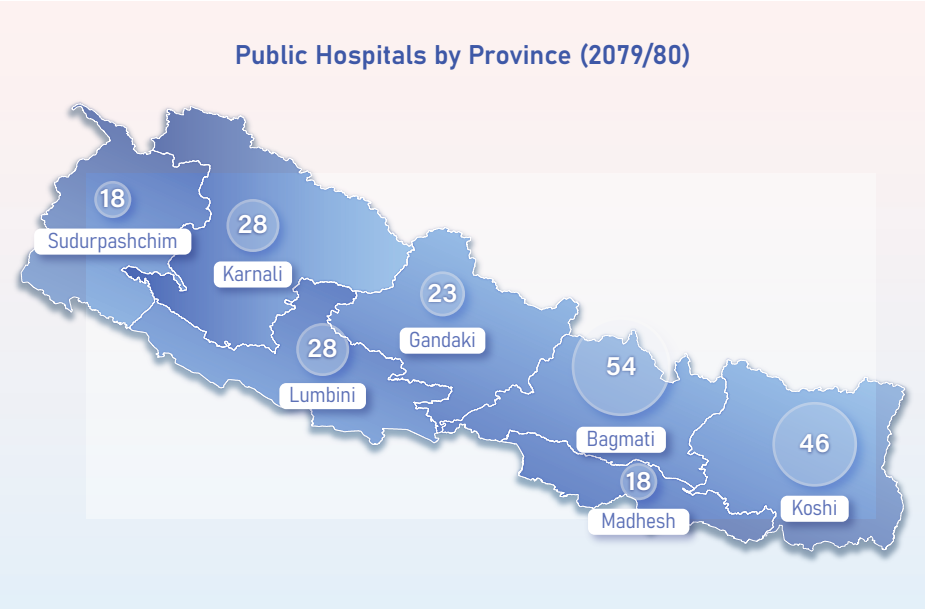
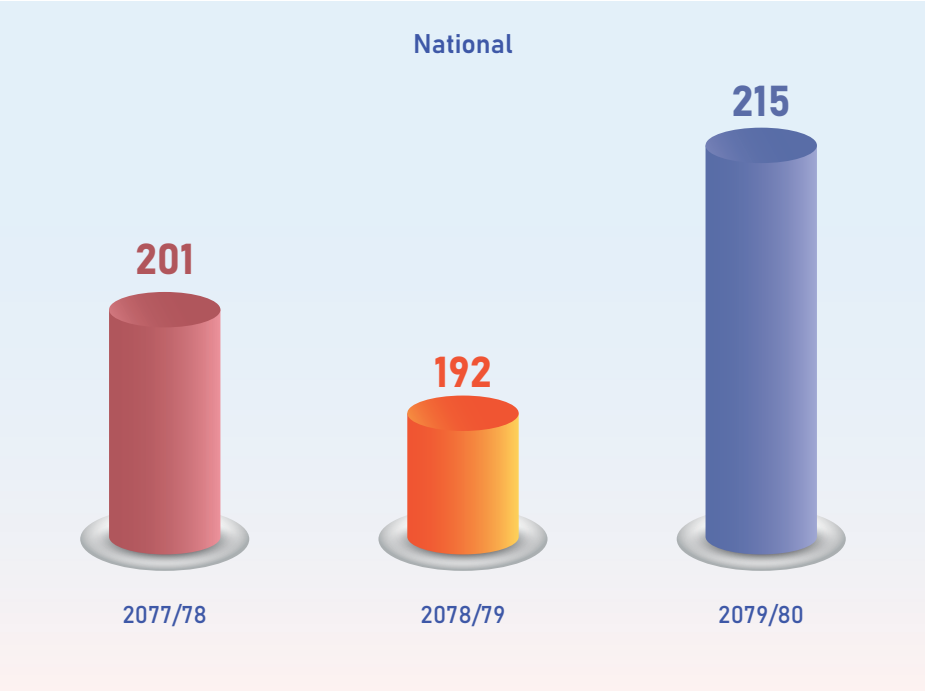
Summary of the conditional grants in the health sector to provinces and local levels as provisioned by federal government, FY 2022/23 and 2023/24 (In million NPR)

Areas	Total Grant 2022-23		Total grant 2023-24		% Change
	Total	Average per level	Total	Average per level	
Province (a)	6266.8	895.3	6127.2	875.31	-2.23
Local level (b)	27444	36.5	30176.5	40.07	9.78
Metropolitan	607.8	101.3	663.8	110.63	9.21
Sub-metropolitan	635.6	57.8	664.4	60.4	4.45
Municipality	11897	43.1	12912.3	46.78	8.54
Rural Municipality	14304	31.1	15936	34.64	11.38
Total (a+b)	33711		36303		

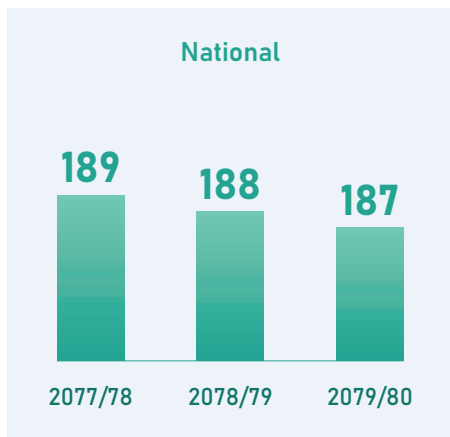
Source: MoHP budget records

Health Facilities

Public Hospitals (in number)



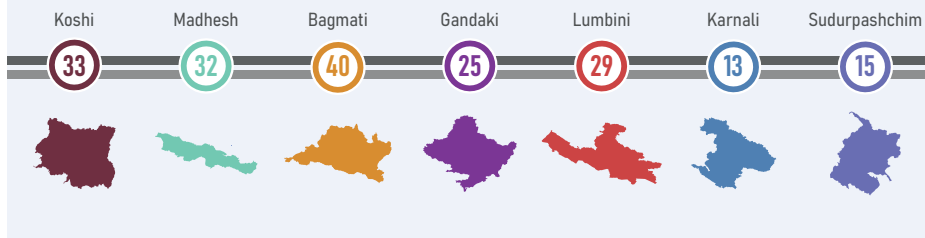
PHCCs (in number)



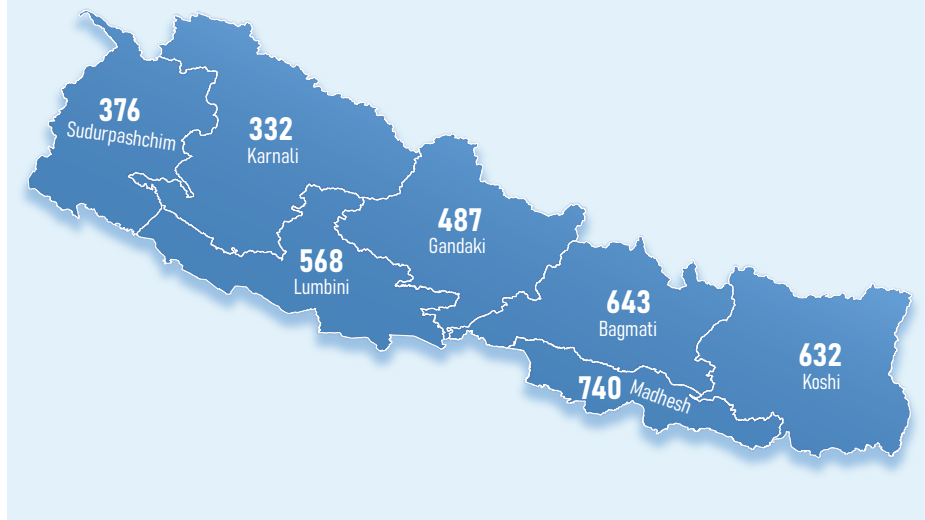
HPs (in number)



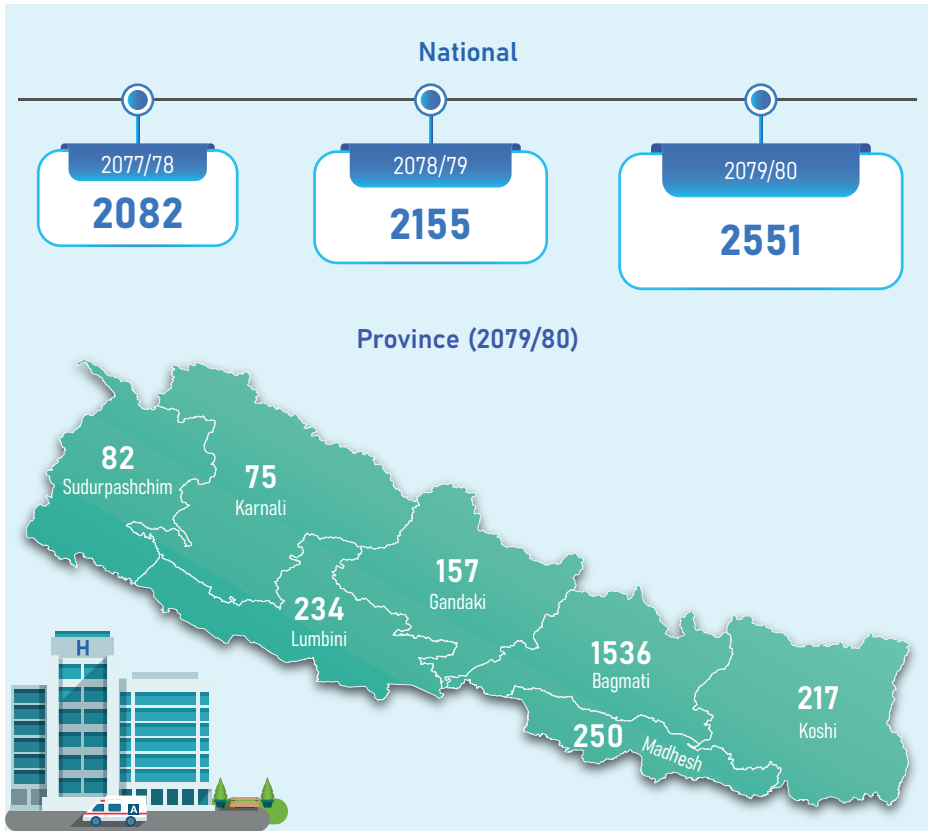
PHCCs by Province (2079/80)



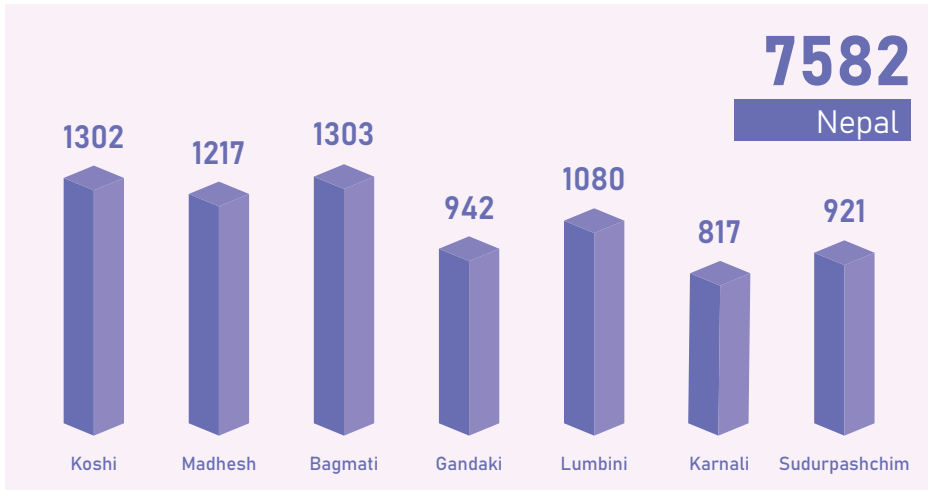
Health Posts by Province (2079/80)



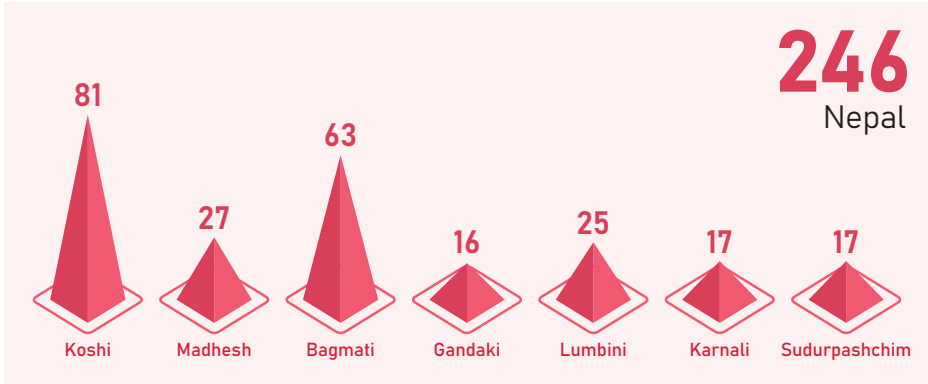
Non-Public Facilities (in number)



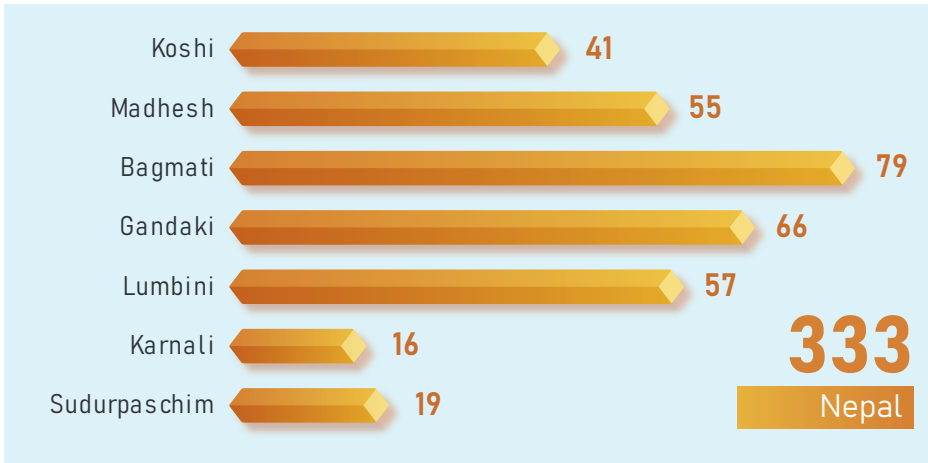
Basic Health Service Centers 2079/80 (in number)



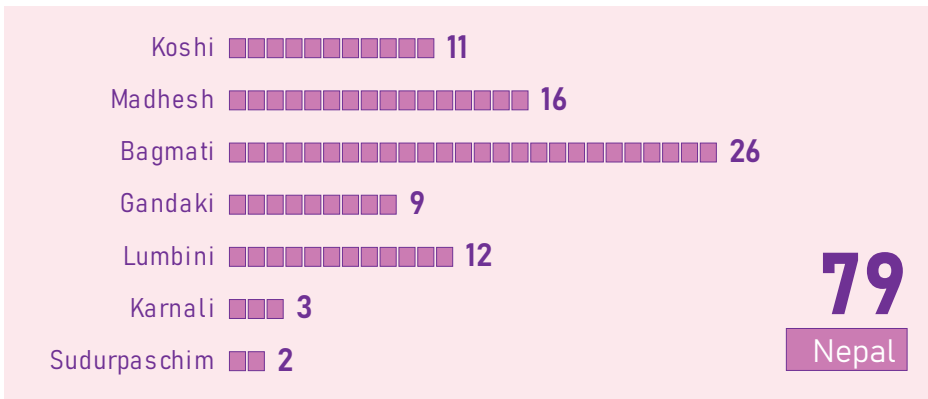
Basic Hospitals (5 - 15 Beds) 2079/80 (in number)



General Hospitals (25 - 50 Beds) 2079/80 (in number)



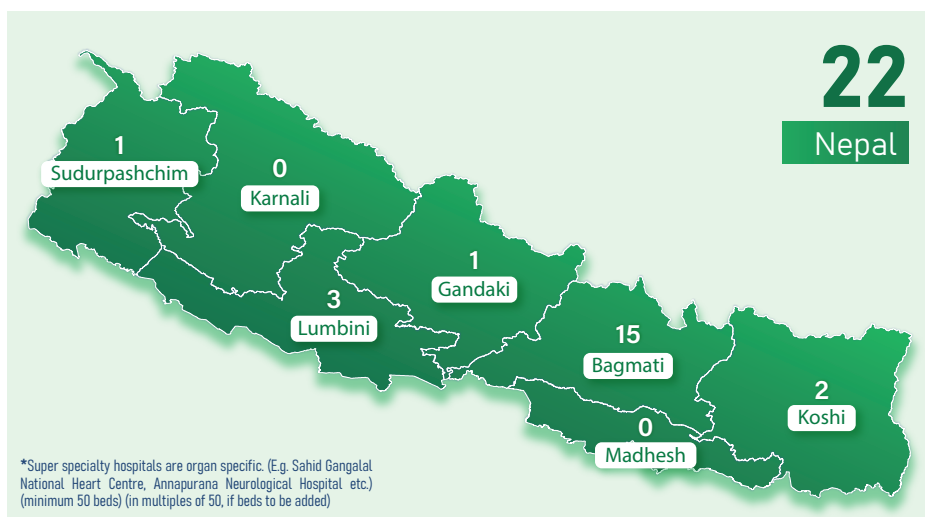
General Hospitals (100 - 300 Beds) 2079/80 (in number)



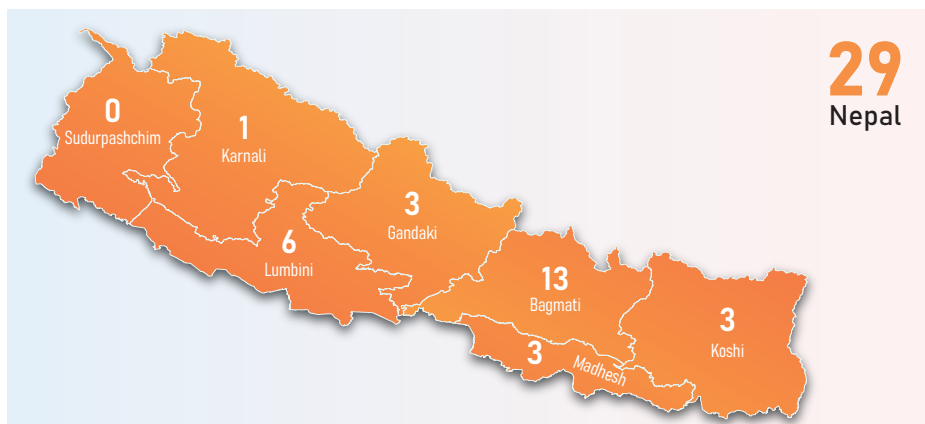
Specialized Hospitals* (100 beds and Above) 2079/80 (in number)



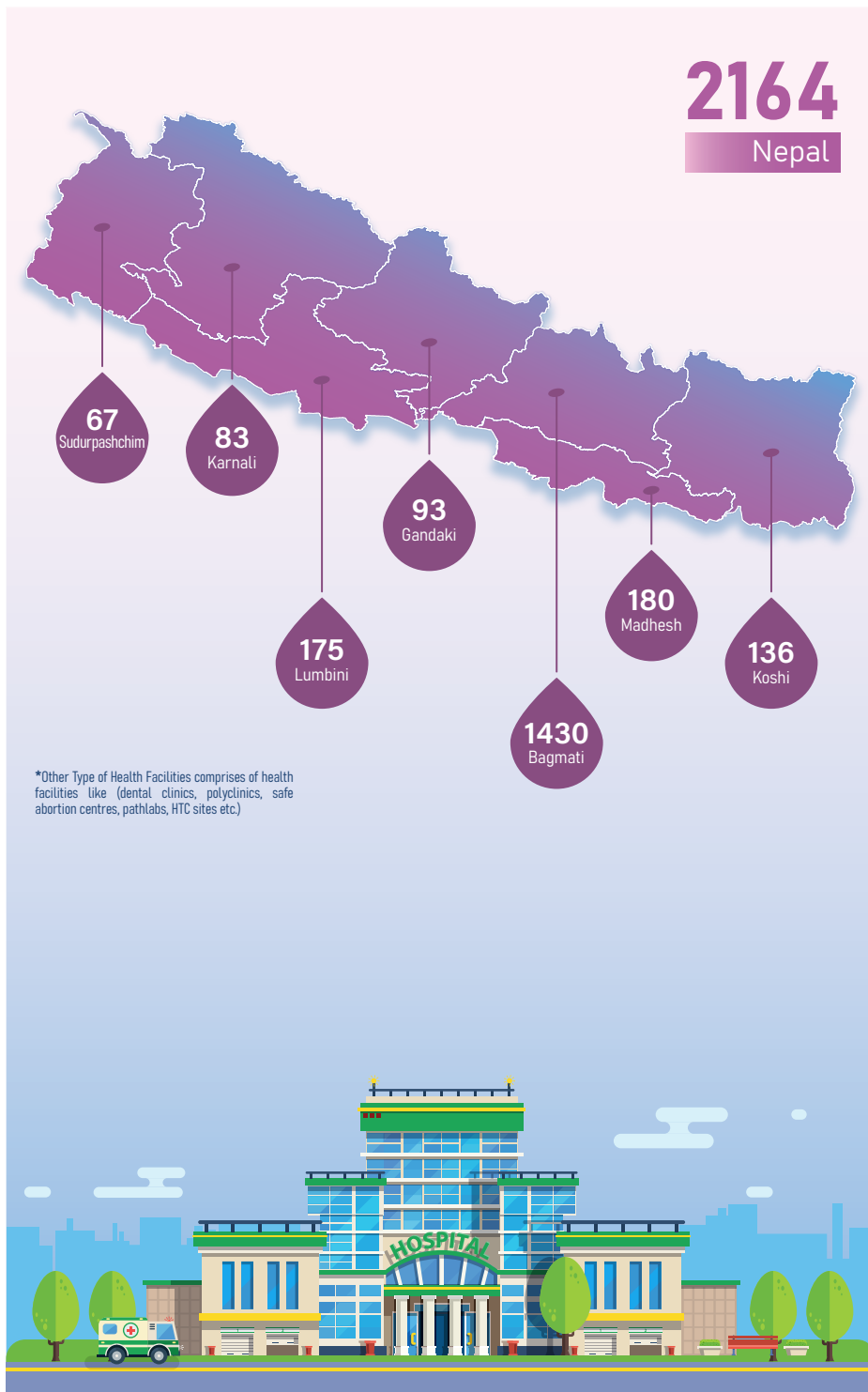
Super Speciality Hospitals* (50+ Beds) 2079/80 (in number)



Academy and Teaching Hospital (300+ Beds) 2079/80 (in number)

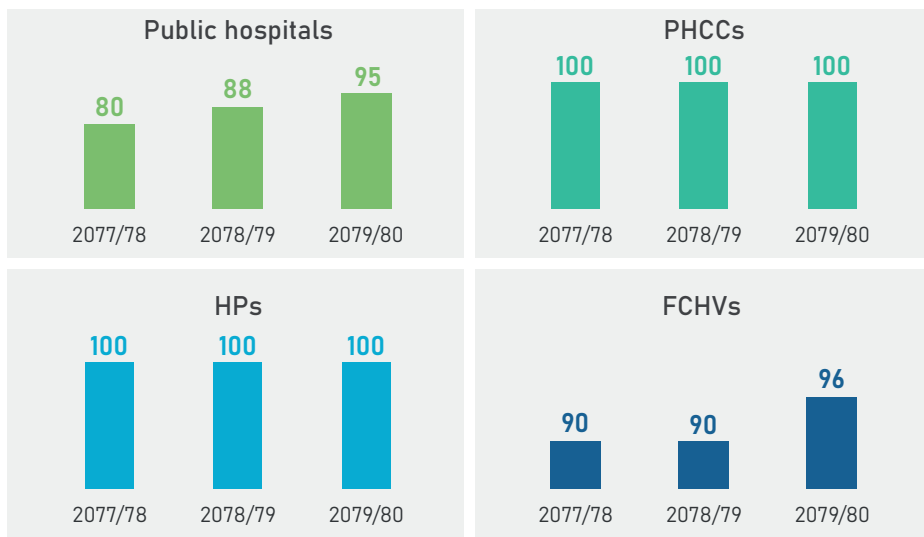


Other Type of Health Facilities* (in number)

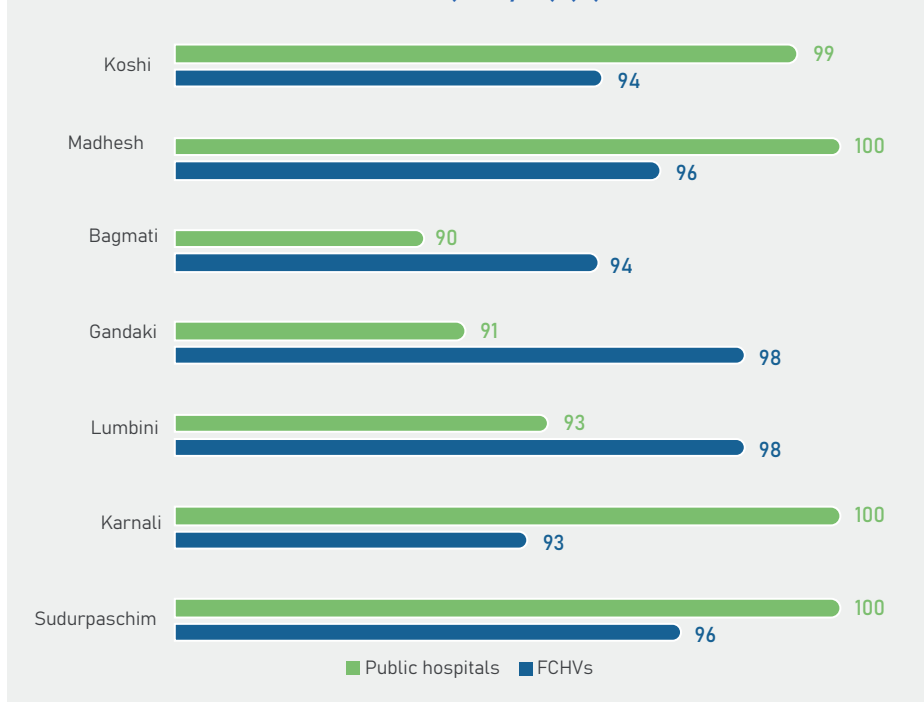


Health Facilities & FCHVs Reporting Status

National (%)

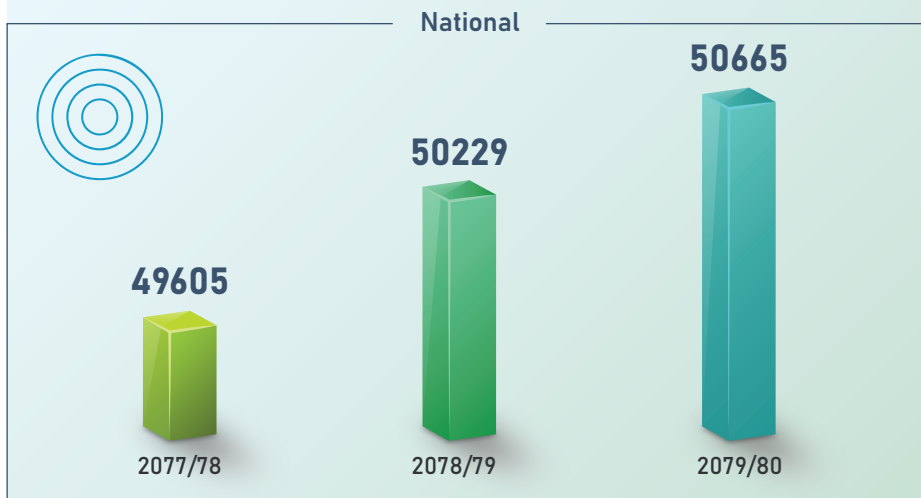


Province (2079/80) (%)

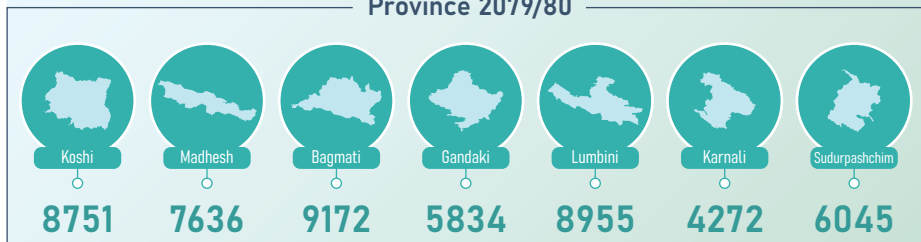


Female Community Health Volunteers Programme (FCHVs)

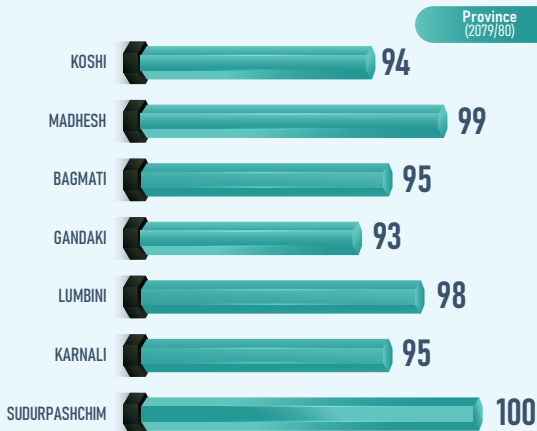
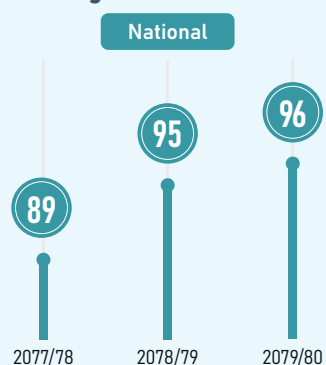
Number of FCHVs



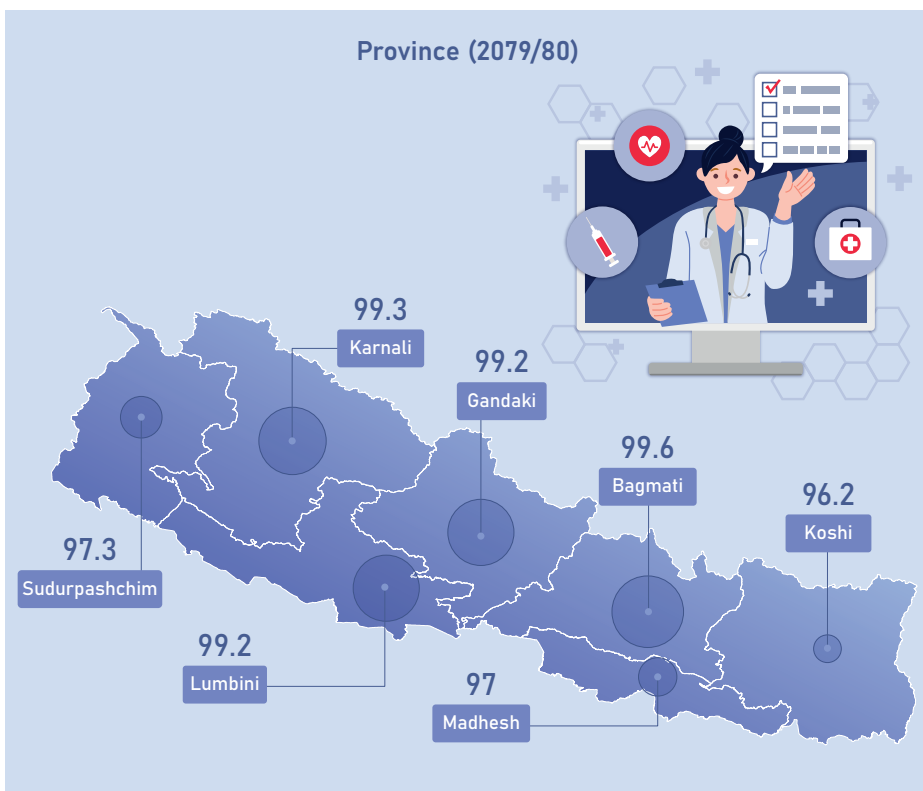
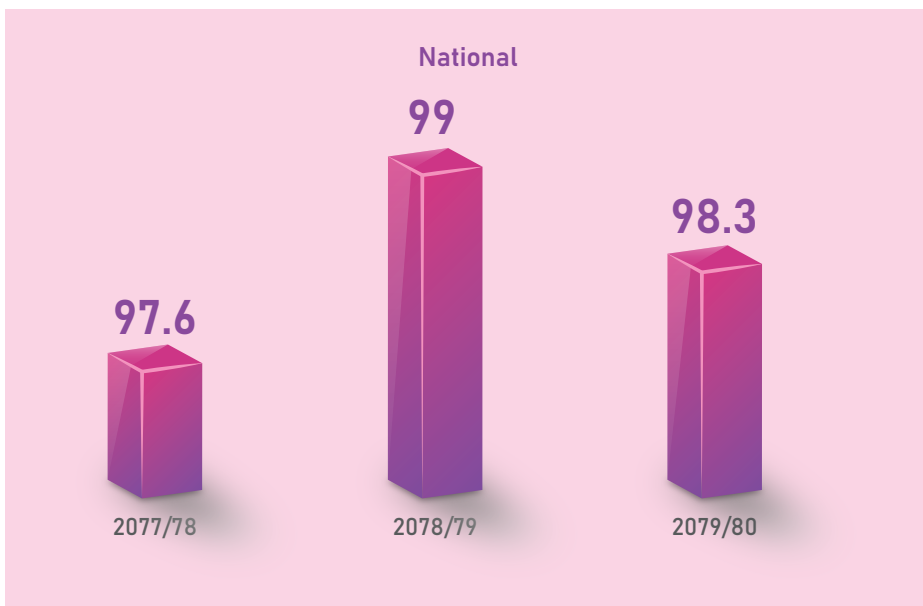
Province 2079/80



% of Mothers' Group Meeting Held



LMIS Reporting Status

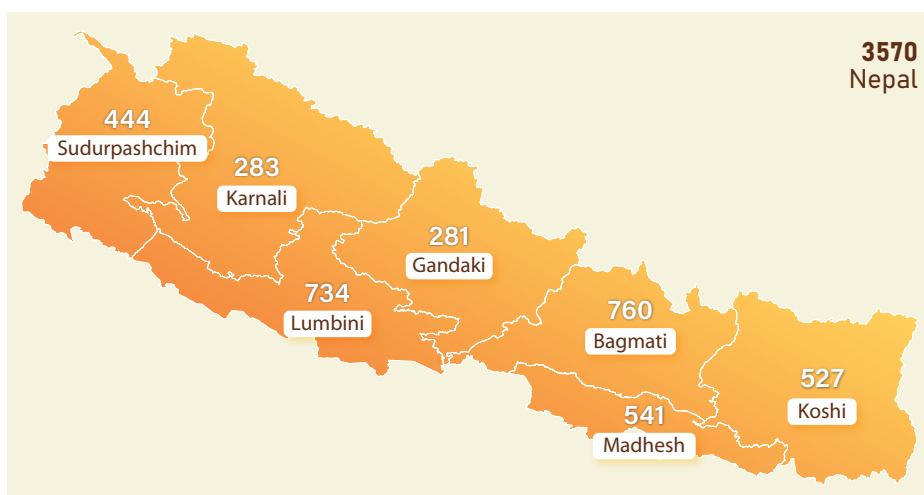


Current eLMIS Online Sites and LMIS Data Entry Sites

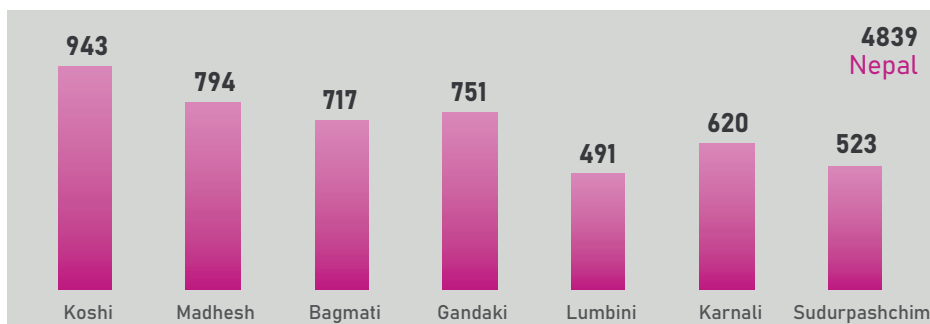
November 2023

Health Facility Type	Count
Central Stores	9
PHLMC Stores	7
National and Provincial Public Health Laboratories	8
District Health Offices	77
LLG Stores	753
Hospitals	177
Health Post/Primary Health Care/Basic Health Unit/Community Health Unit/others/Ayurvedic Health Center	2539
Total	3570

Province wise eLMIS Live Sites

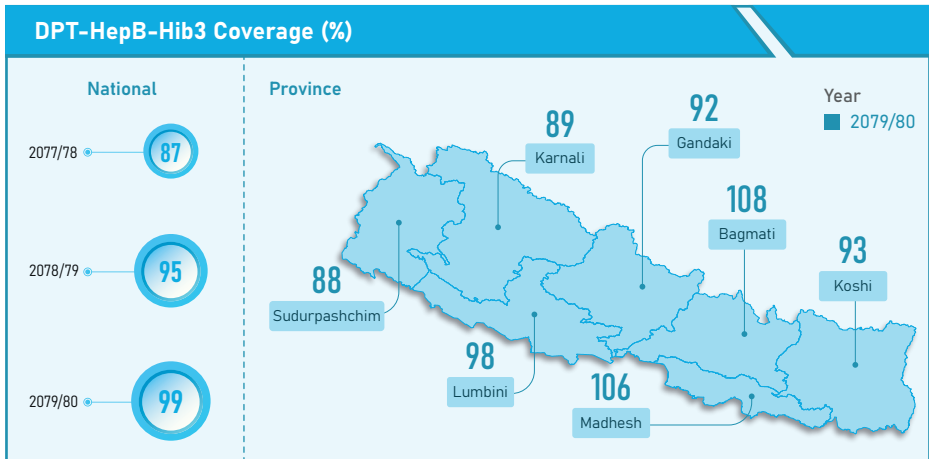
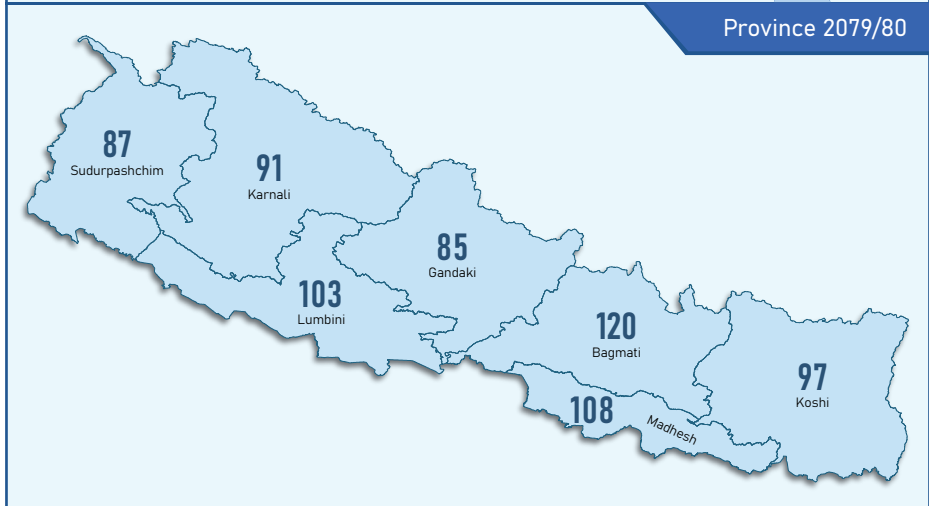
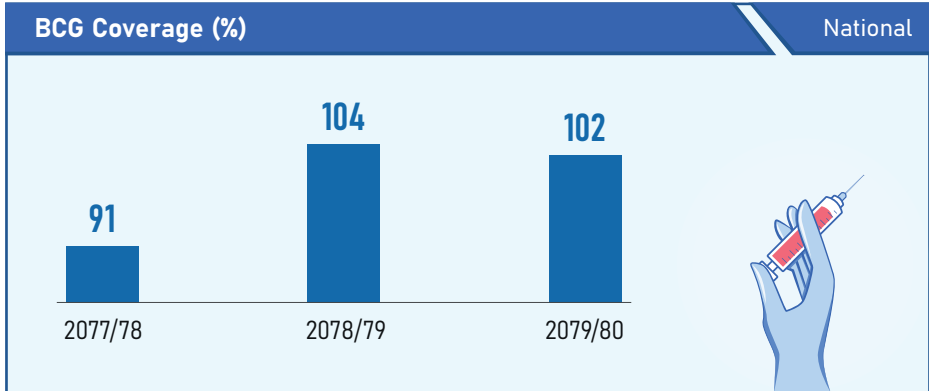


Province wise LMIS Data Entry Reporting Sites

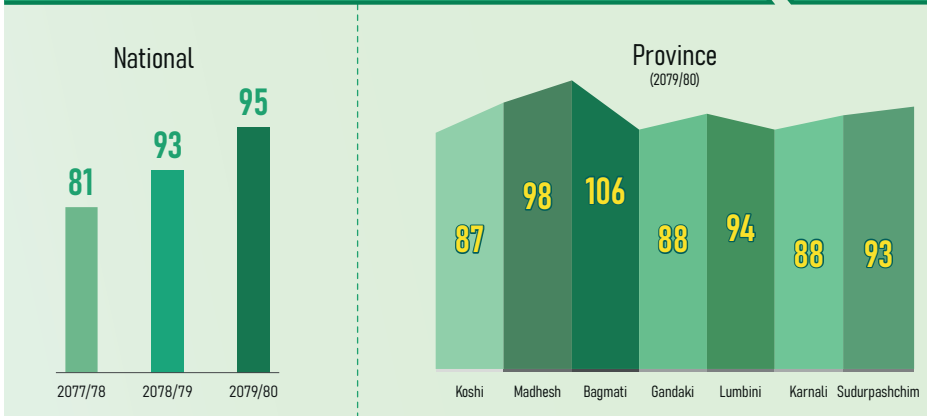


- LMIS reports from all SDPs on Monthly basis are entered from Local Level Government.
- eLMIS is the only source of LMIS data for all tiers of Supply Chain in Nepal.

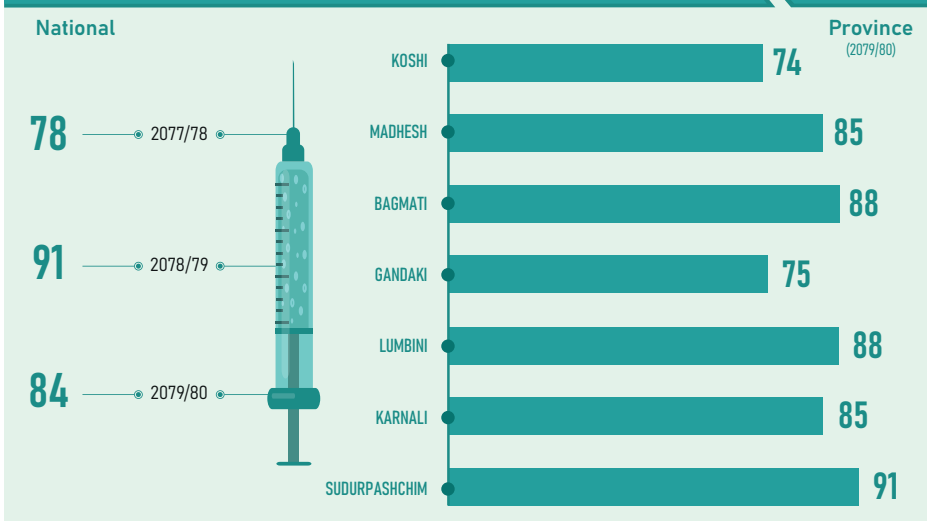
Immunization Programme



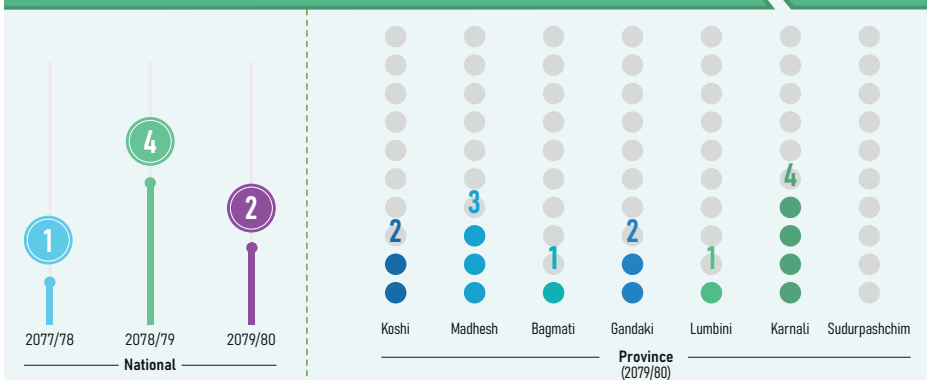
MR2 Coverage (12-23 months) (%)



Fully Immunized Children (%)

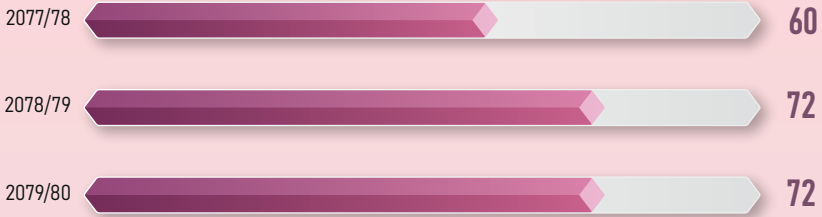


Dropout Rate DPT-Hep B-Hib 1 vs 3 Coverage (%)

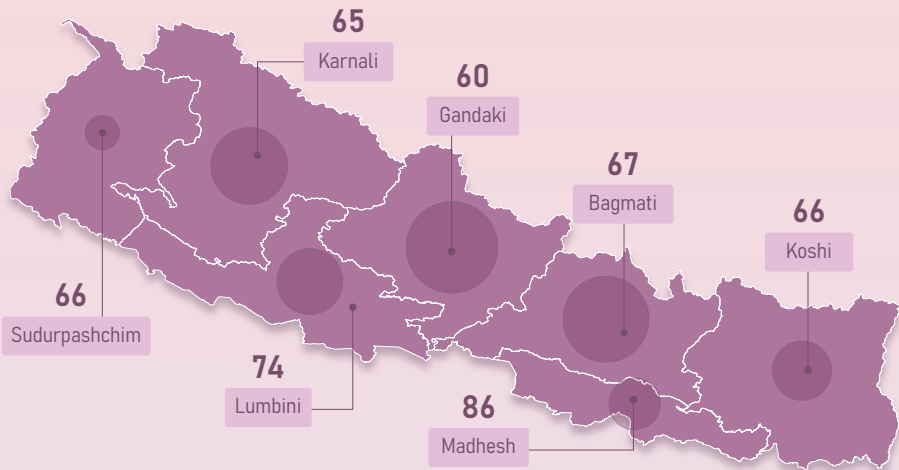


Pregnant Women who Received TD2 and TD2+ (%)

National

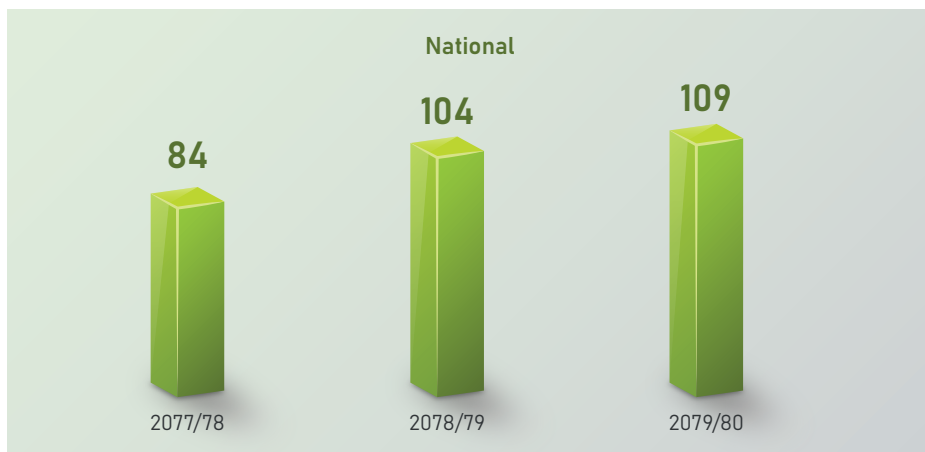


Province 2079/80

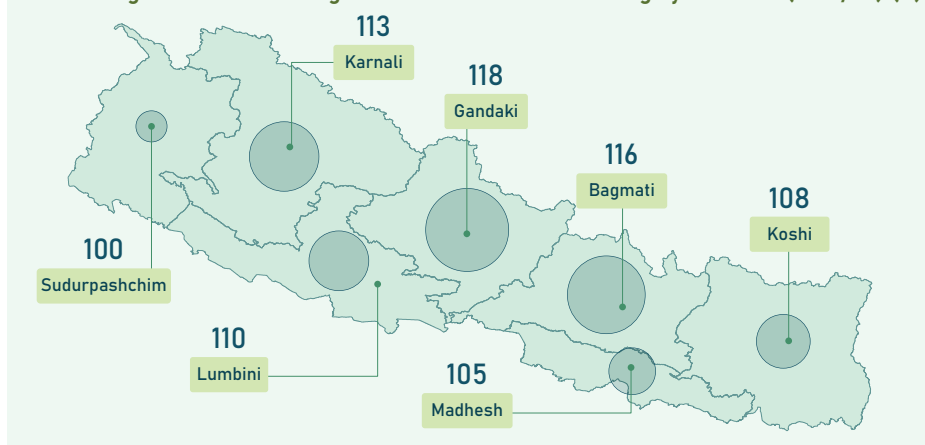


Nutrition Programme

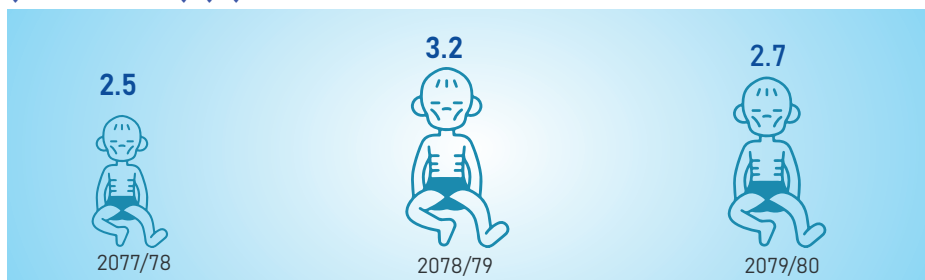
Children Aged 0-11 Months Registered for Growth Monitoring (%)



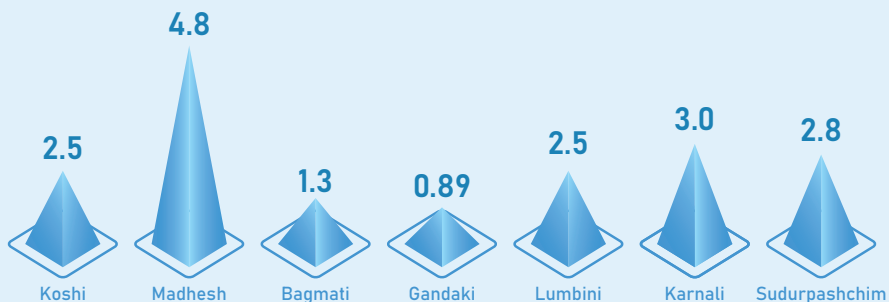
Children Aged 0-11 Months Registered for Growth Monitoring by Province (2079/80) (%)



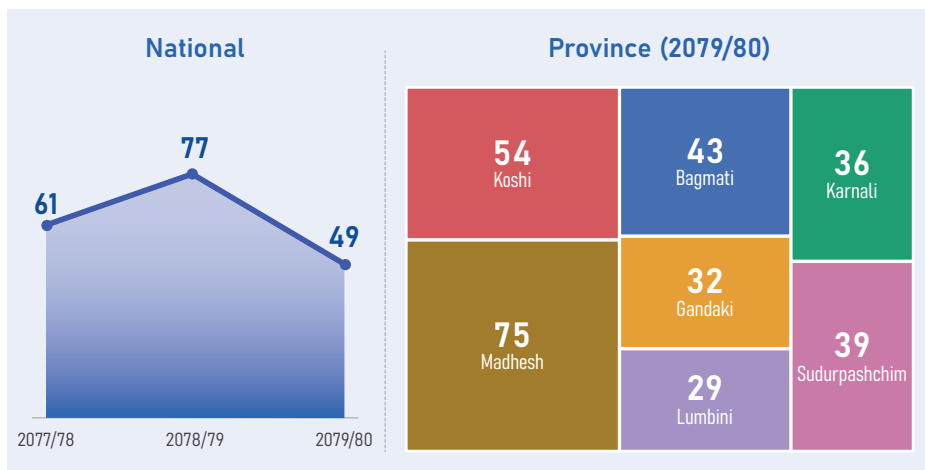
Underweight Children Among New Growth Monitoring Visits (0-23 Month) (%)



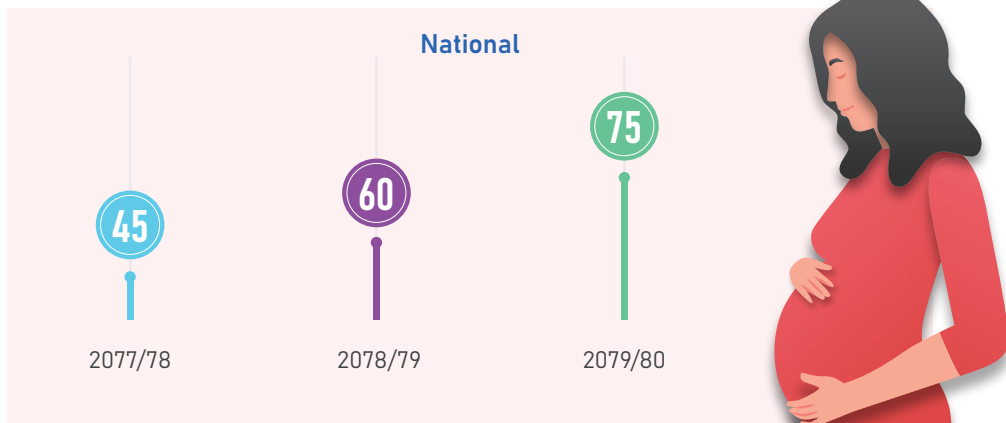
Underweight Children Among New Growth Monitoring Visits (0-23 Month) by Province (2079/80) (%)



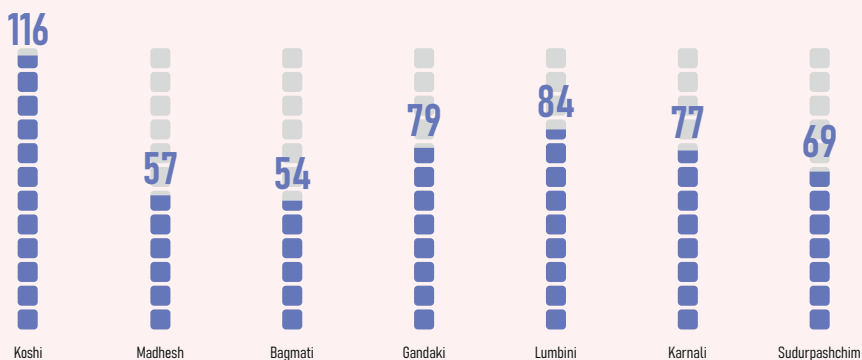
Children Aged 12-23 Months Registered for Growth Monitoring (%)



Pregnant Women who Received 180 Tablets of Iron (%)



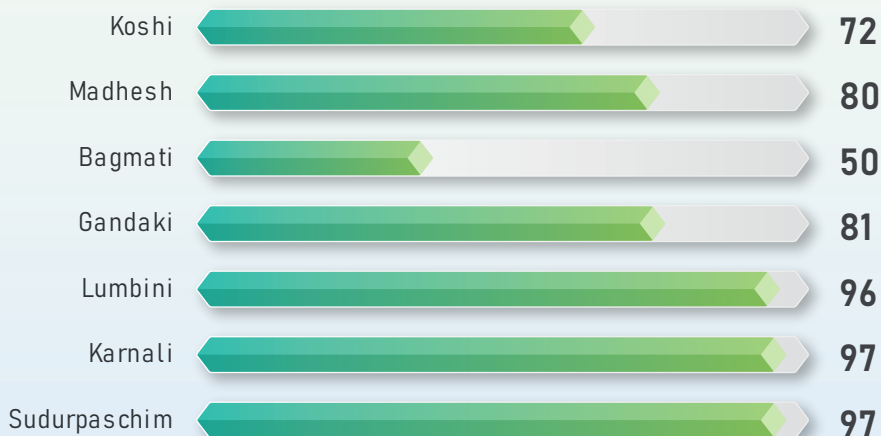
Pregnant Women who Received 180 Tablets of Iron by Province (2079/80) (%)



Postpartum Mothers who Received Vitamin A Supplements (%)

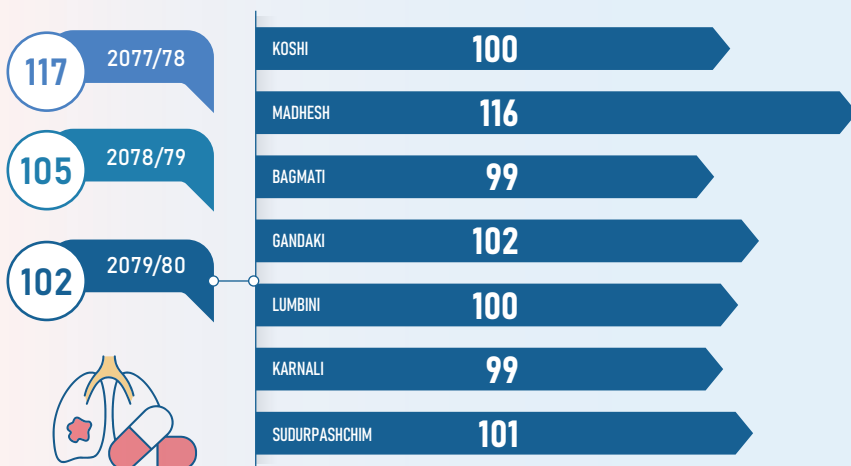


Province 2079/80

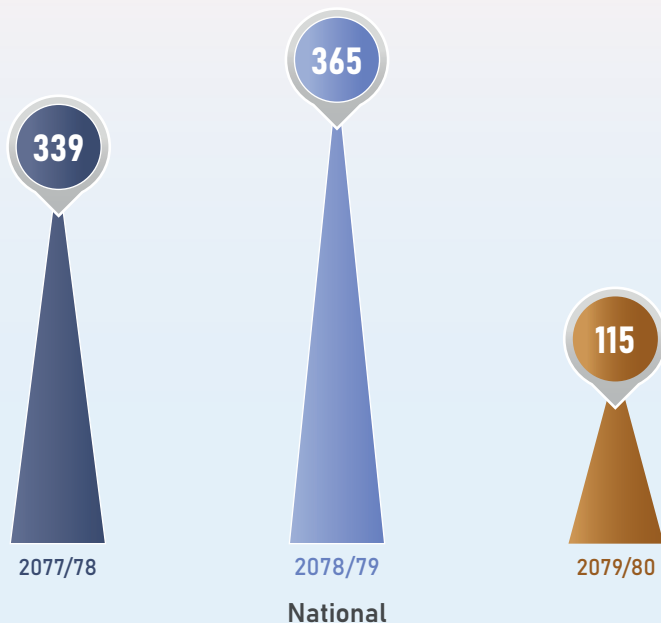


Integrated Management Of Neonatal & Childhood Illness (IMNCI) Programme

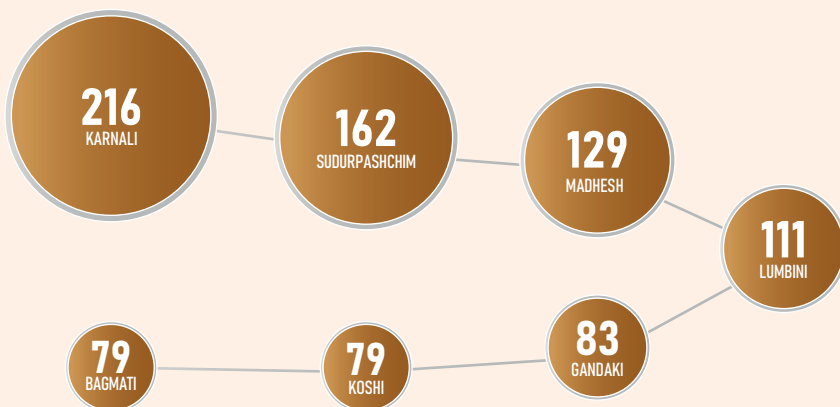
% of Children U5 Years with Pneumonia Treated with Antibiotics (Amoxicillin)



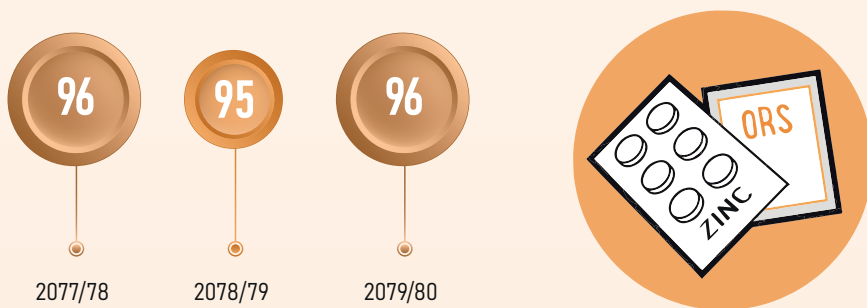
Incidence of Diarrhea Per 1,000 Under Five Years Children



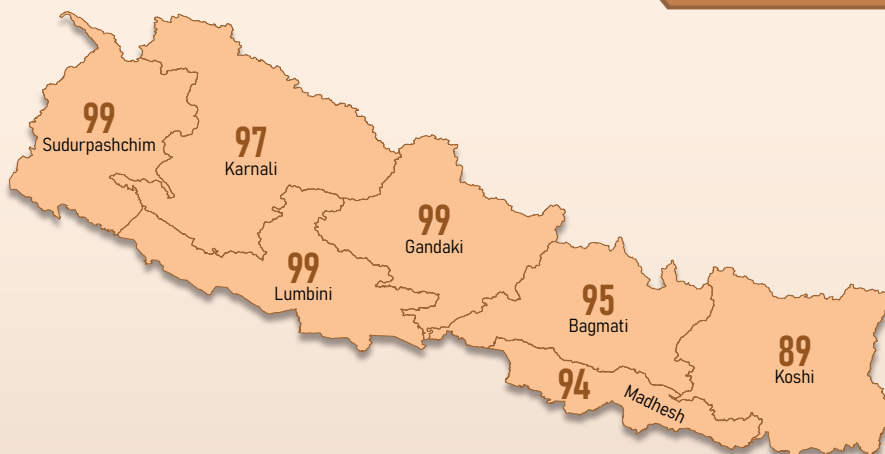
Incidence of Diarrhea Per 1,000 Under Five Years Children by Province 2079/80



% of Children Under 5 with Diarrhea Treated with ORS and Zinc

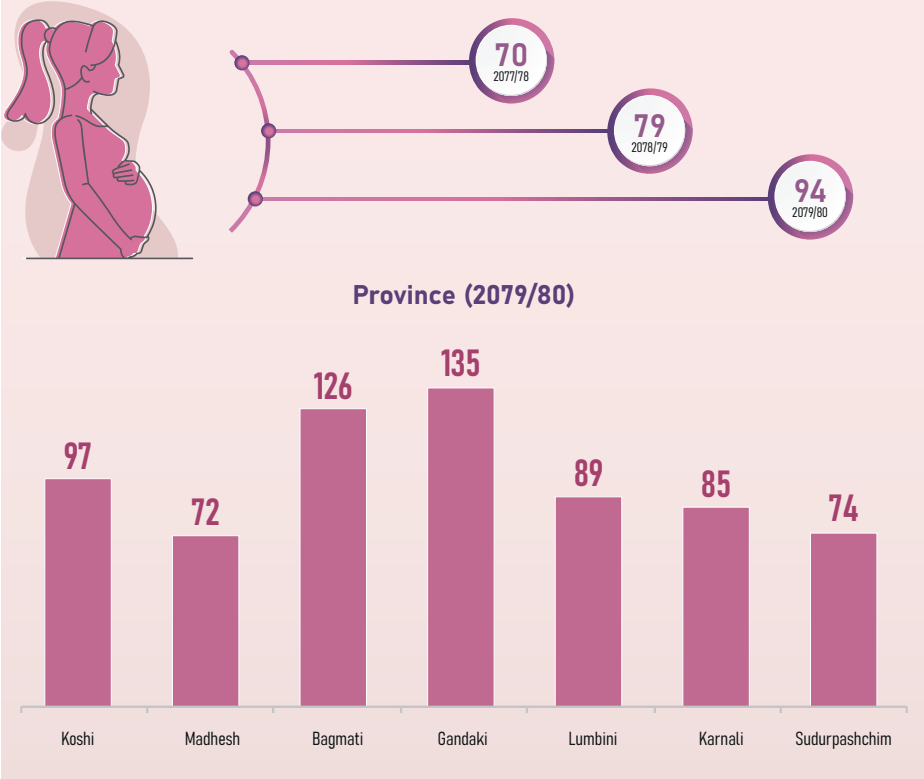


Province 2079/80

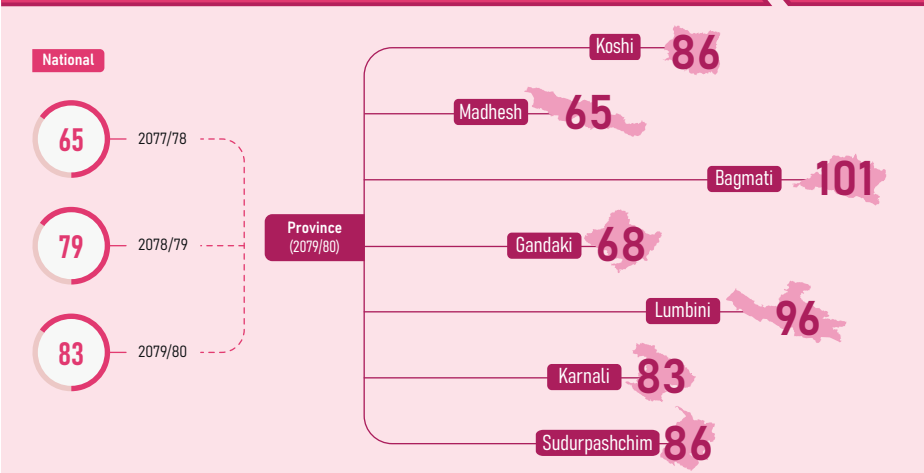


Safe Motherhood Programme

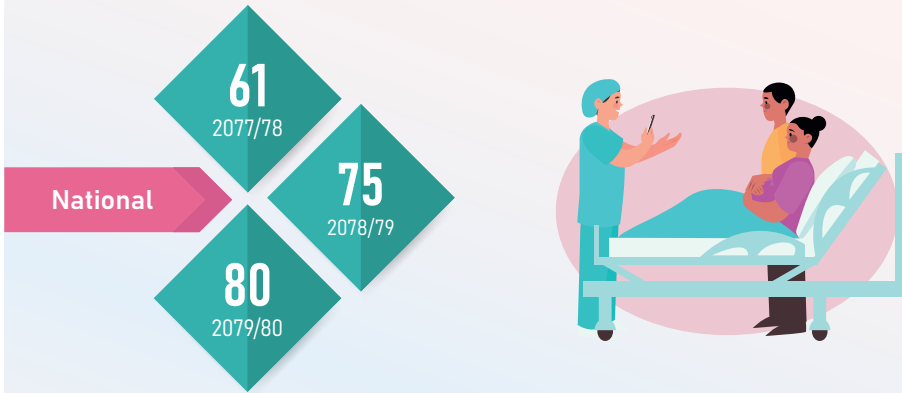
Pregnant Women Who Attended Four ANC Visits as Per Protocol (%)



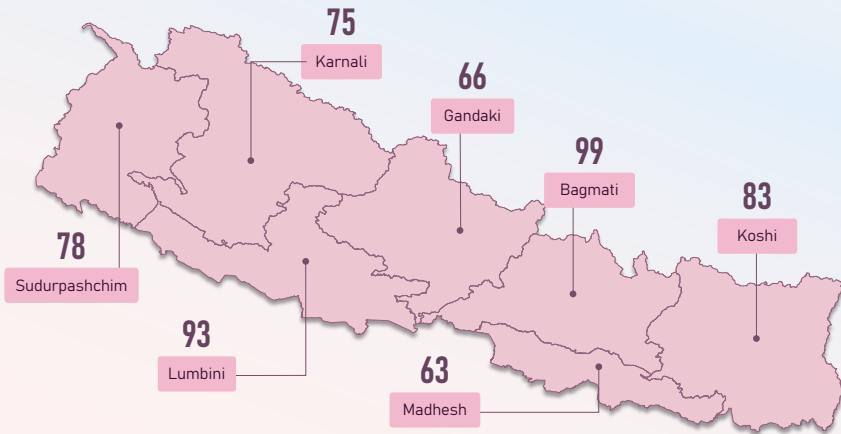
Institutional Deliveries (%)



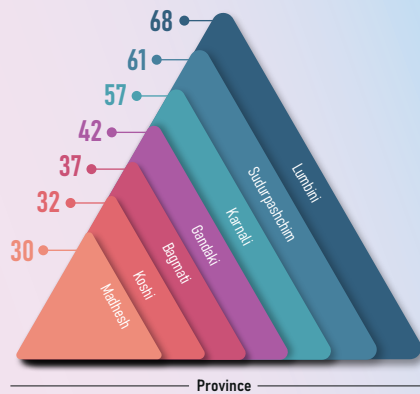
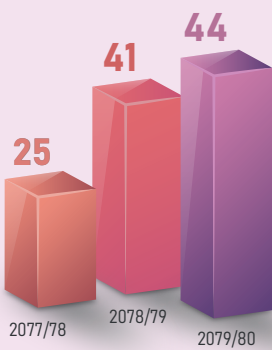
Deliveries Conducted by Skilled Birth Attendant & Skilled Health Personnel (%)



Province (2079/80)

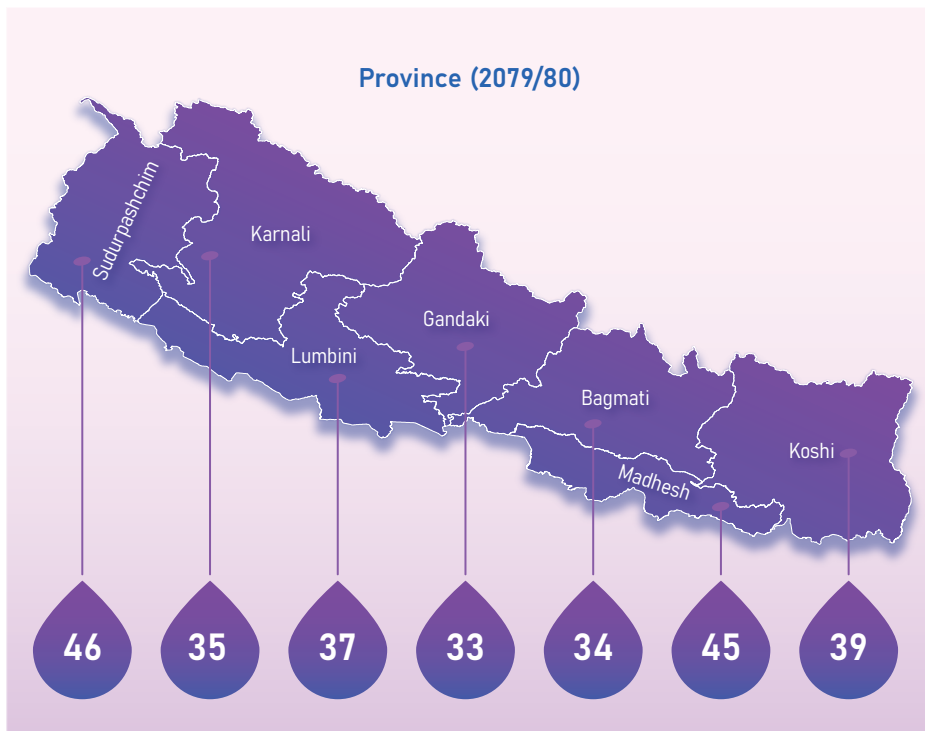
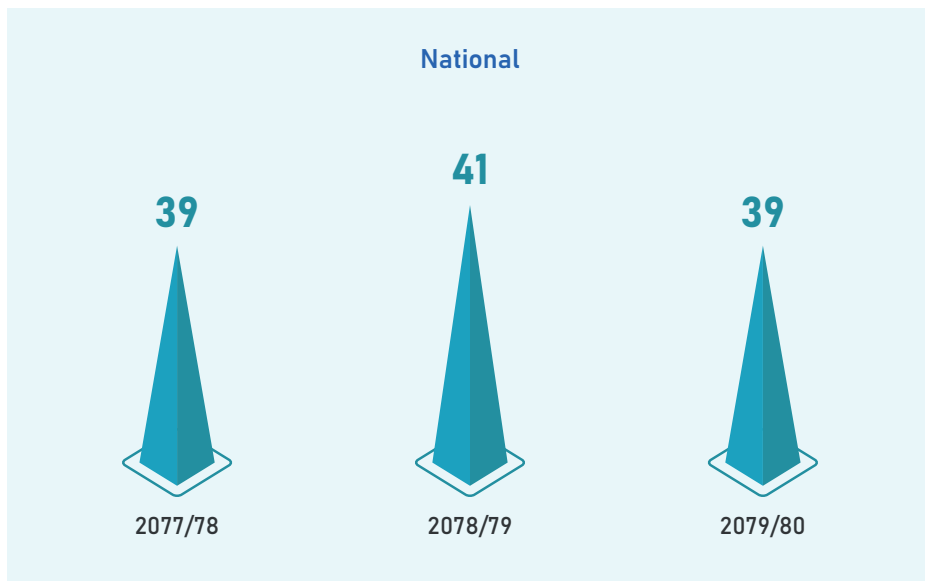


Mothers who had Three PNC Check-up as Per Protocol (%)

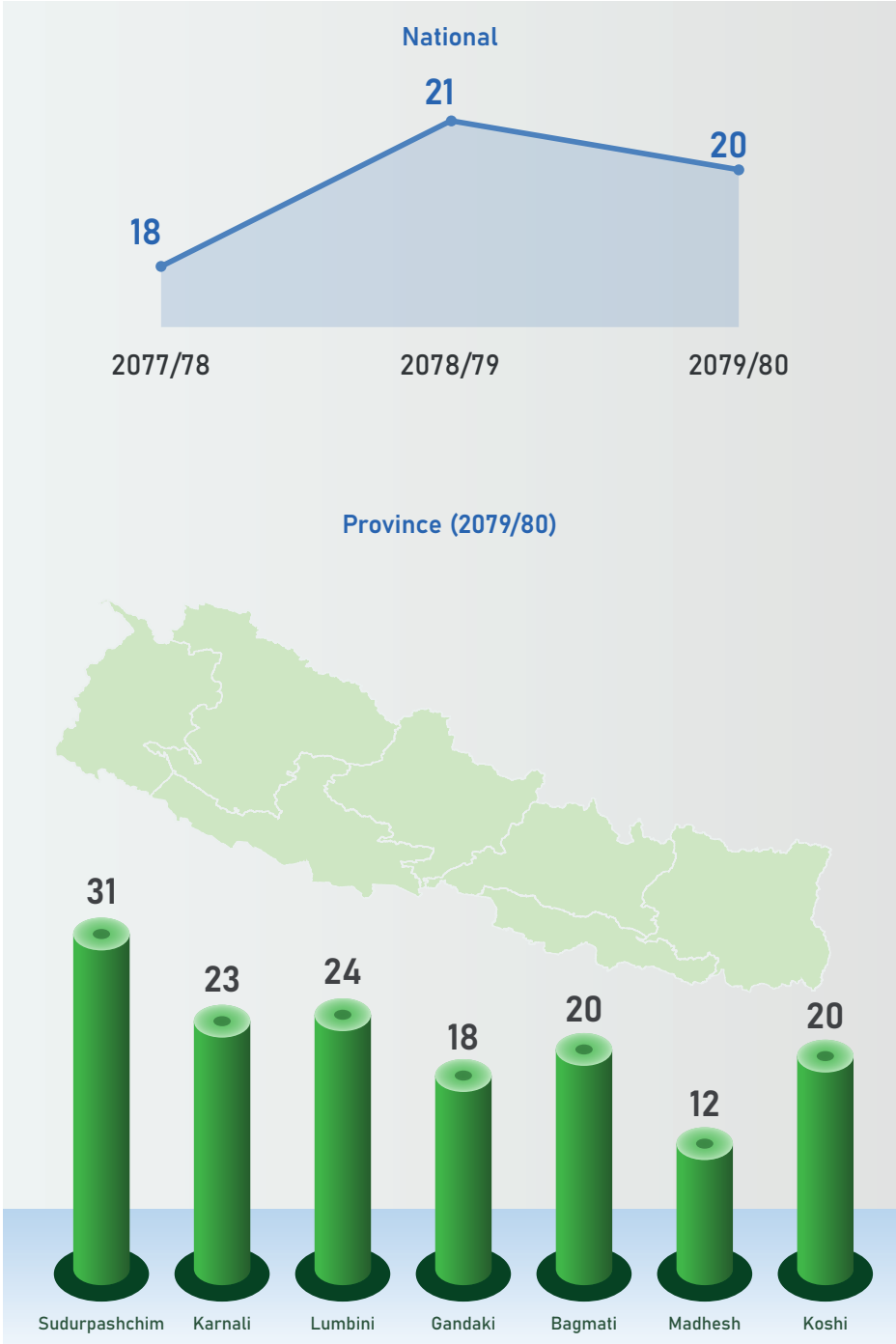


Family Planning Programme

Contraceptive Prevalence Rate (CPR Adjusted) (%)

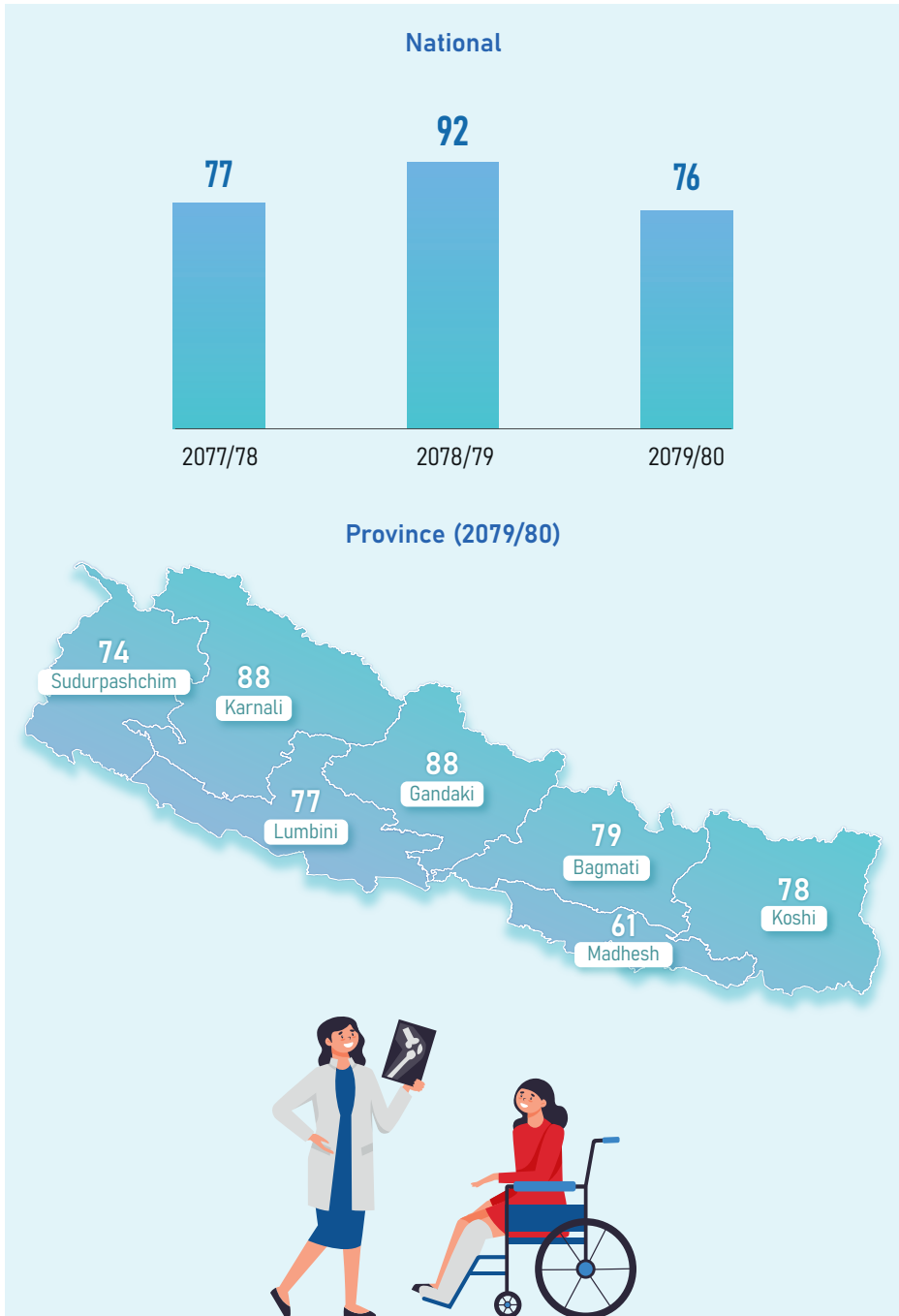


Family Planning Current Users (Spacing Methods) (%)

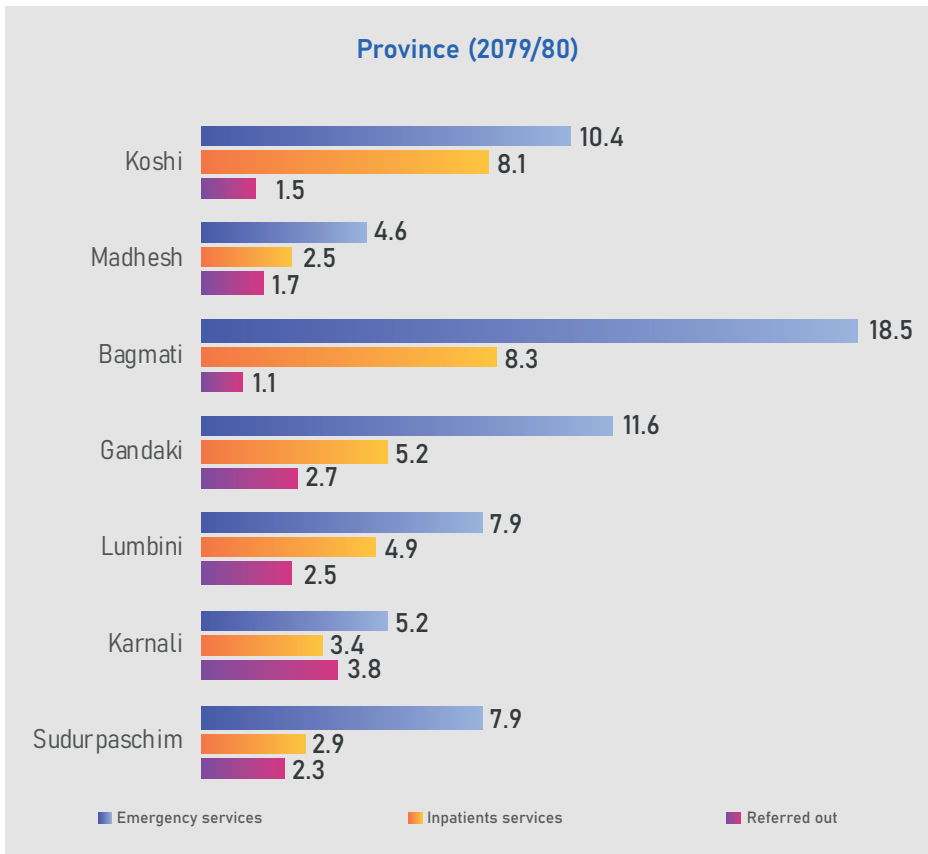
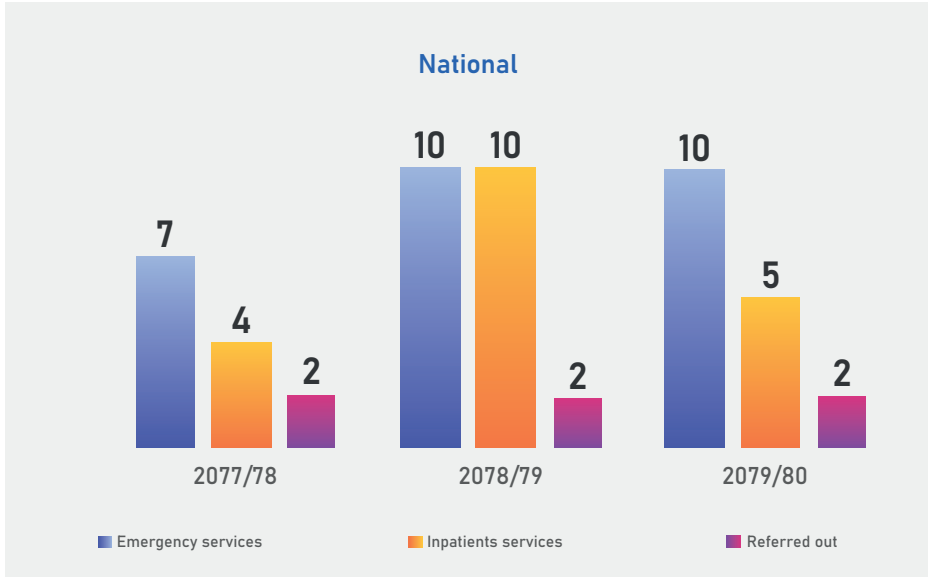


Curative Services

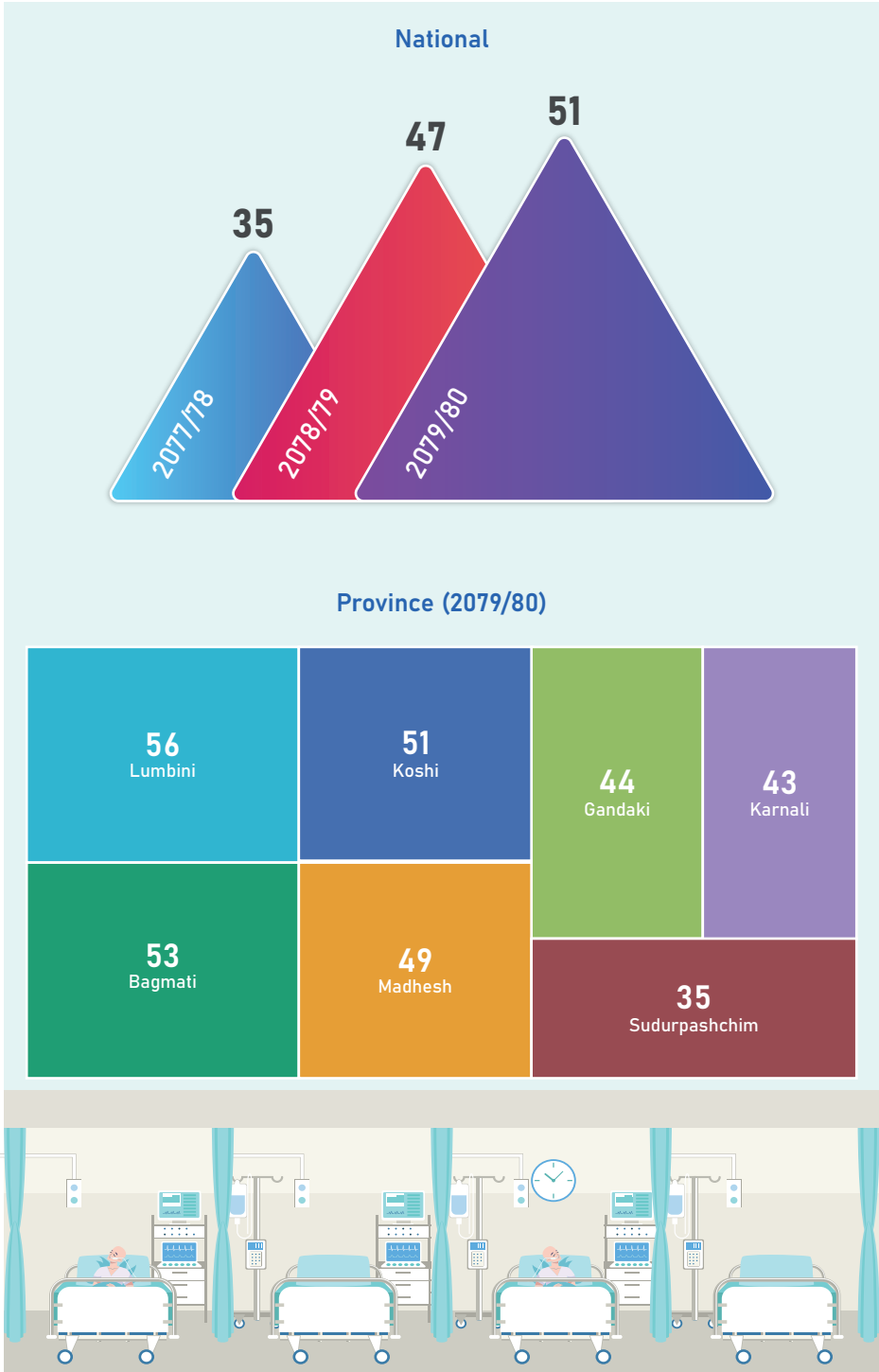
Percentage of Population Utilizing Outpatient (OPD) Services



Percentage of Population Utilizing Hospital Services

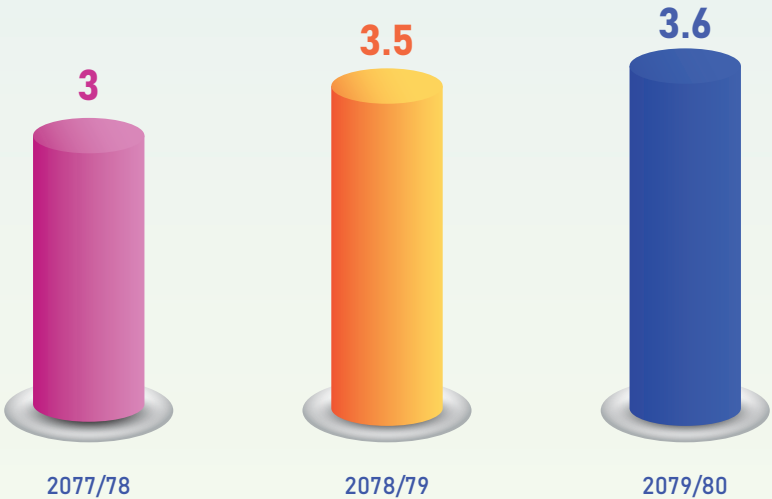


Bed Occupancy Rate (%)

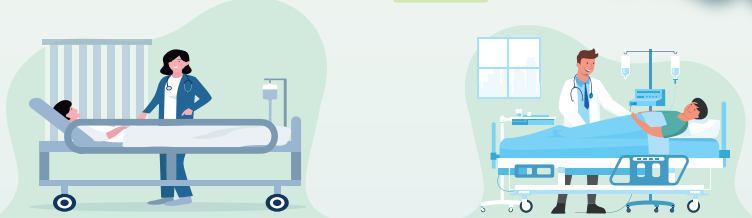
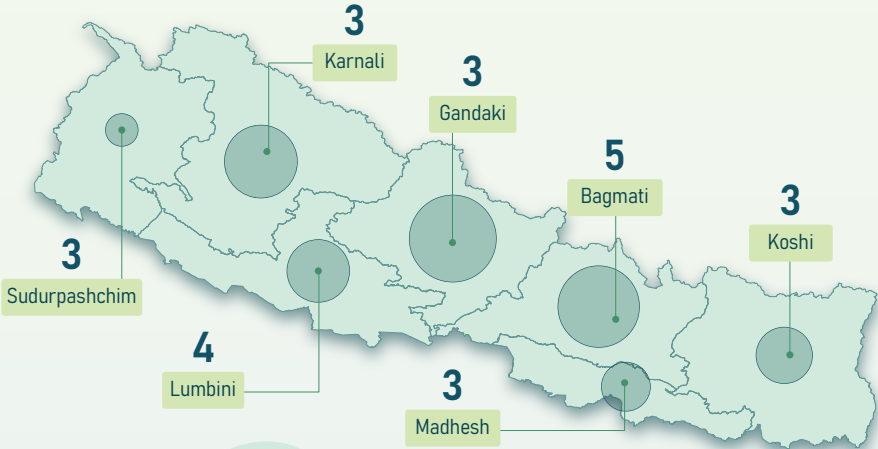


Average Length of Stay at Hospital

National



Province (2079/80)

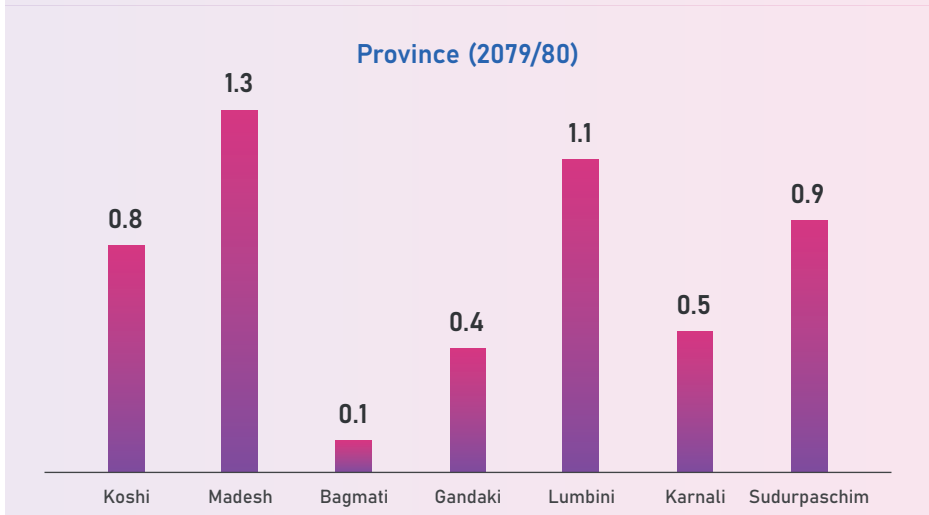
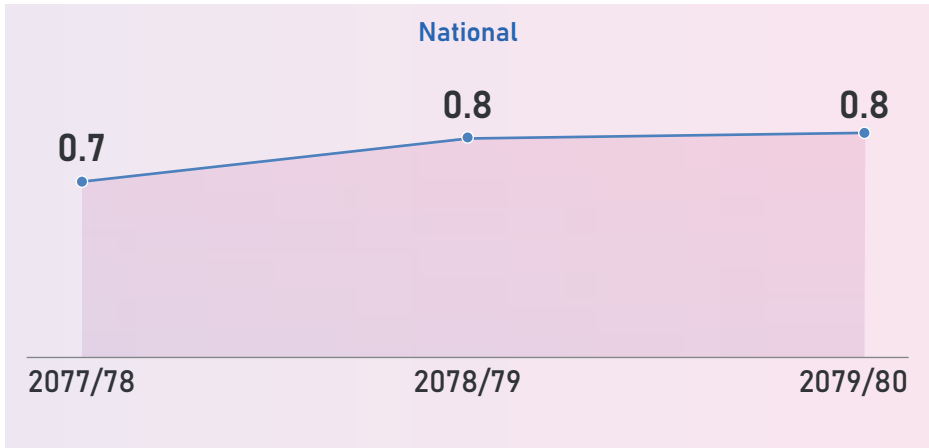


Leprosy Programme

New Case Detection Rate (NCDR) Per 100,000 Population



Prevalence Rate (PR) Per 10,000 Population



NCD Programme

(in number)

19,262

CARDIOVASCULAR
DISEASE

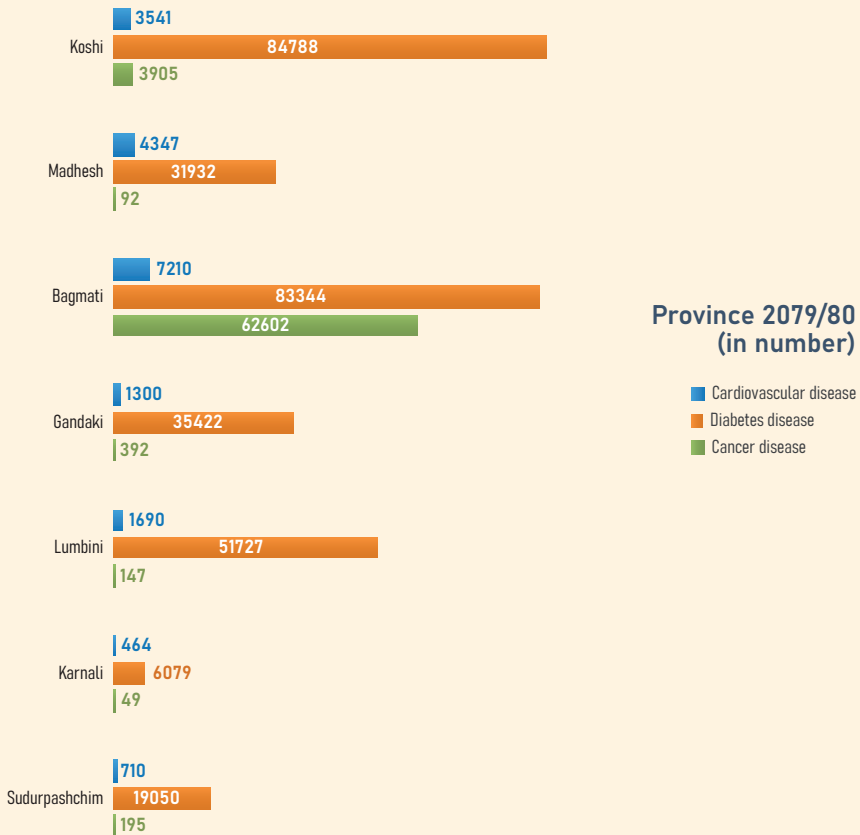
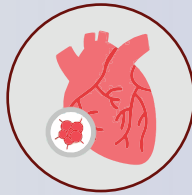
312,342

DIABETES

67,382

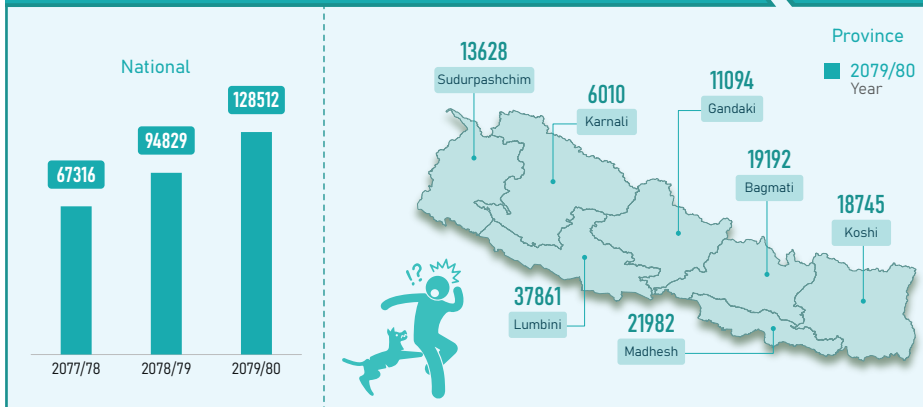
CANCER

2079/80

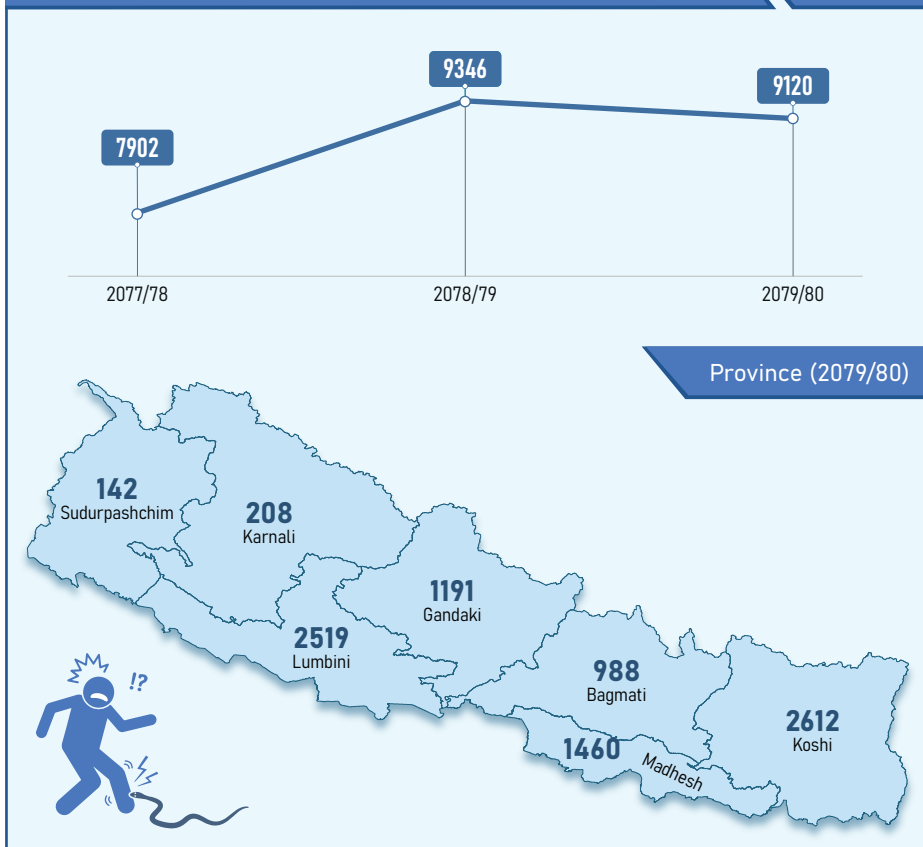


ZOONOTIC

Cases of Animal Bites (in number)



Cases of Snake Bites (in number)

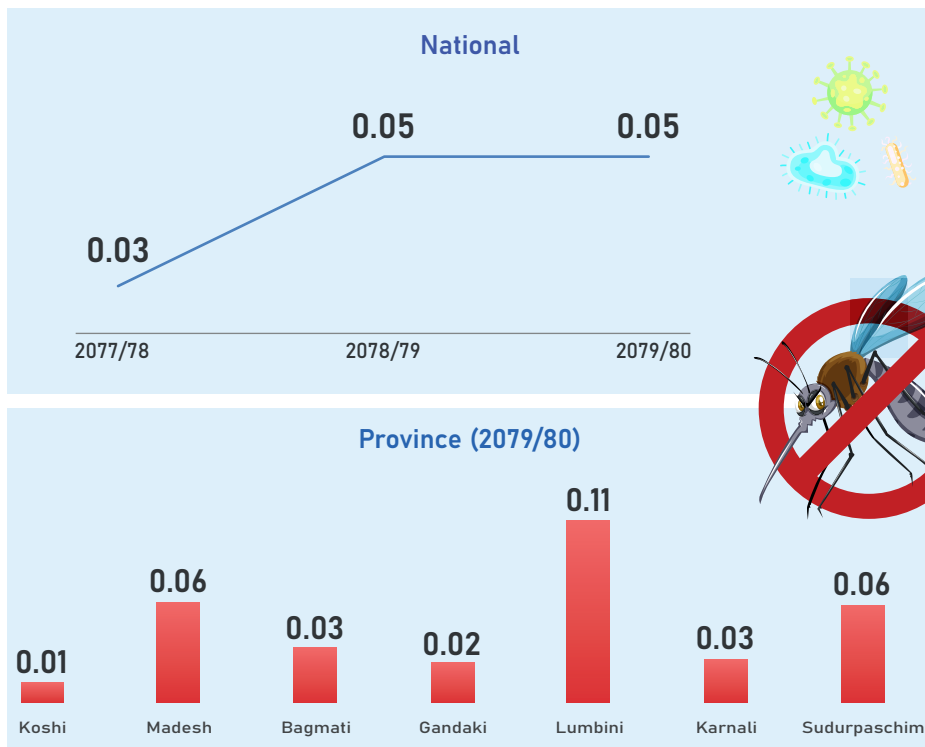


Malaria, Kalaazar and Dengue Programme

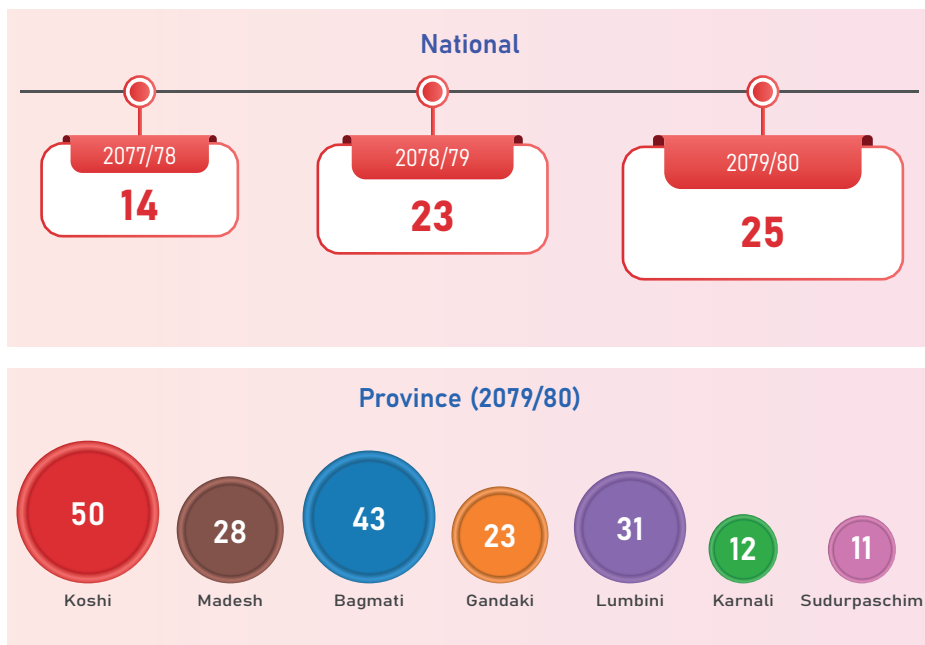
Annual Blood Slide Examination Rate Per 100



Annual Parasite Incidence (API) Per 1,000

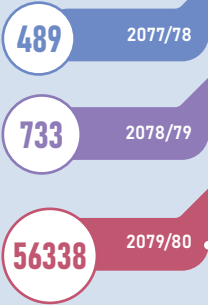


Percentage of PF Among Malaria Positive Case

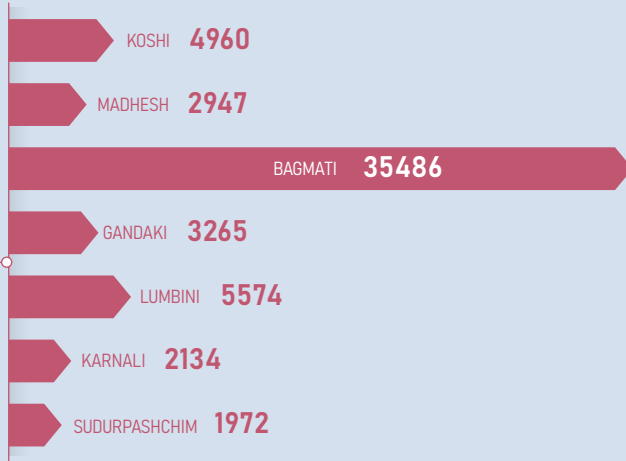


Dengue Cases (in number)

National

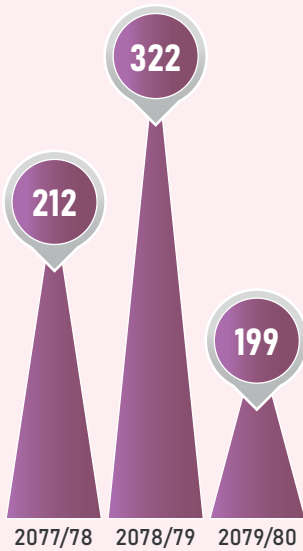


Province (2079/80)

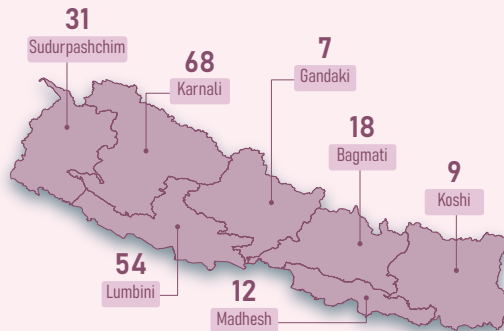


New Kala-azar Cases (in number)

National

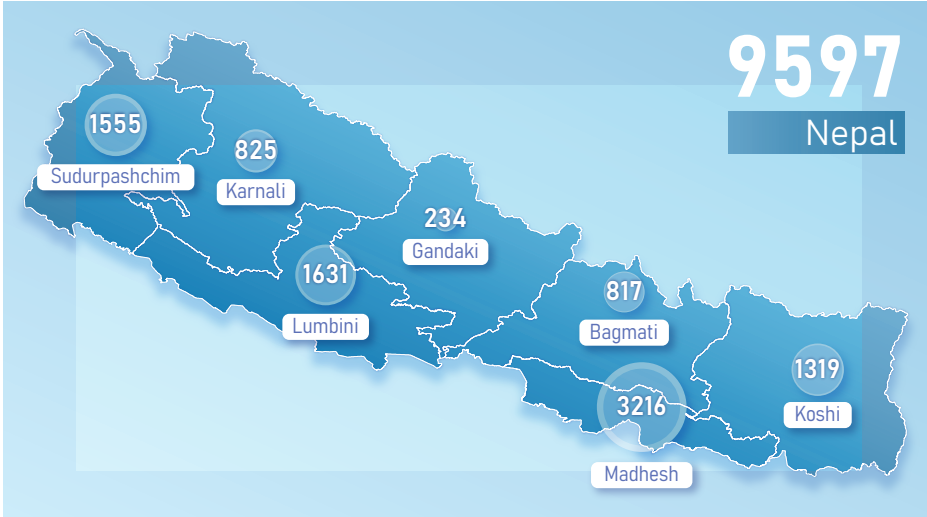


Province (2079/80)

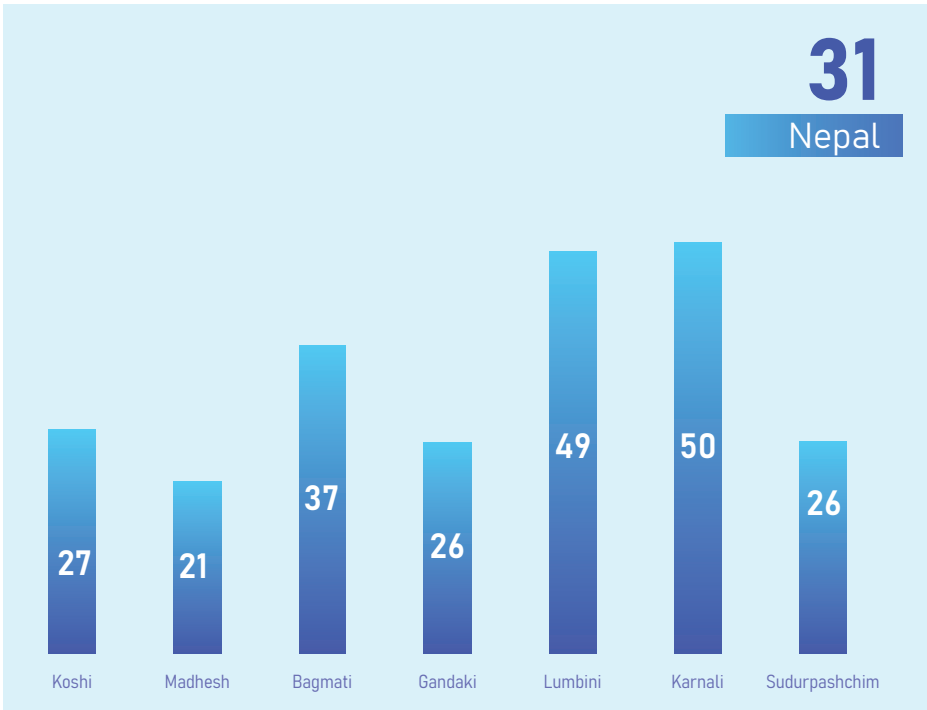


Nursing and Social Security

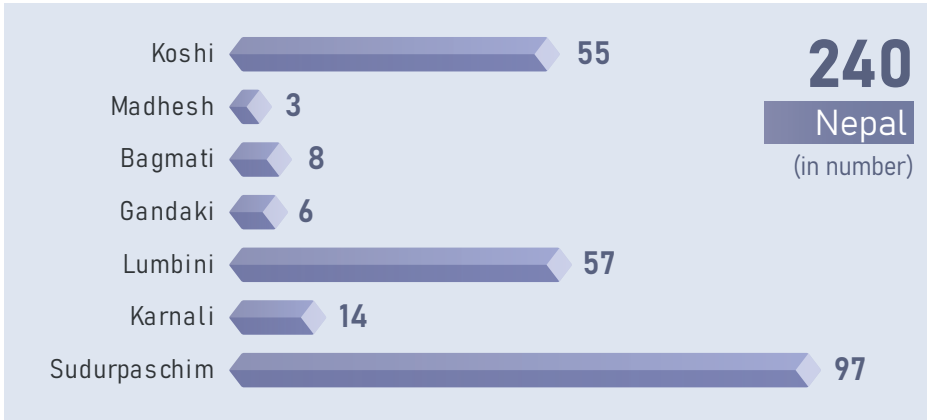
New Registered Cases in OCMC FY 2079/80 (in number)



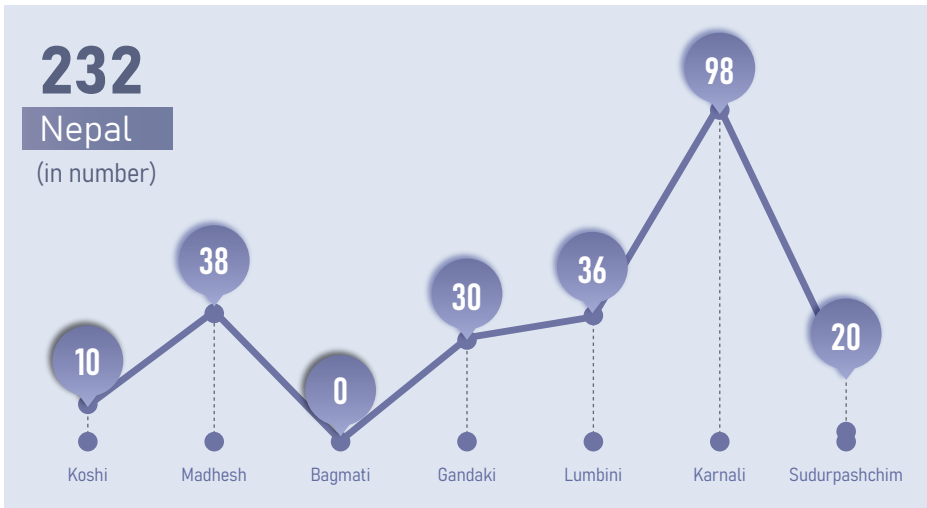
% of Physical Violence Among the Total New Registered Cases FY 2079/80



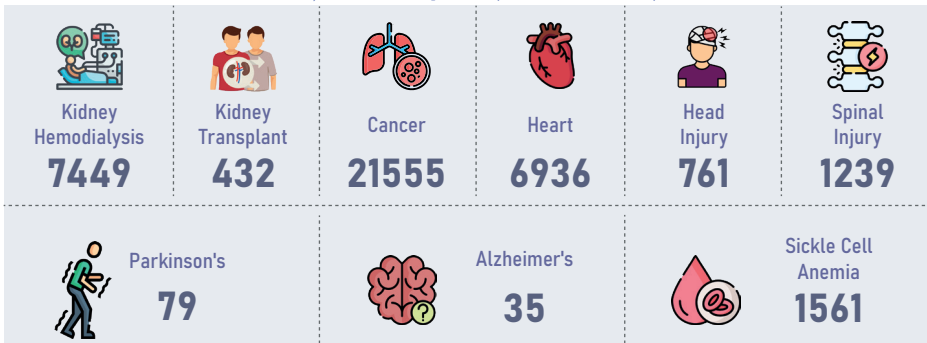
New Registered Geriatric Cases - Pneumonia FY 2079/80



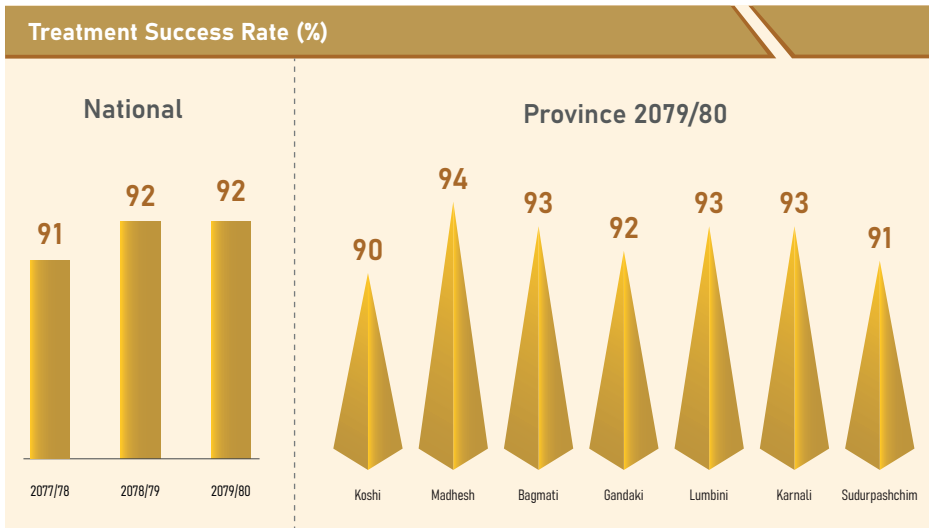
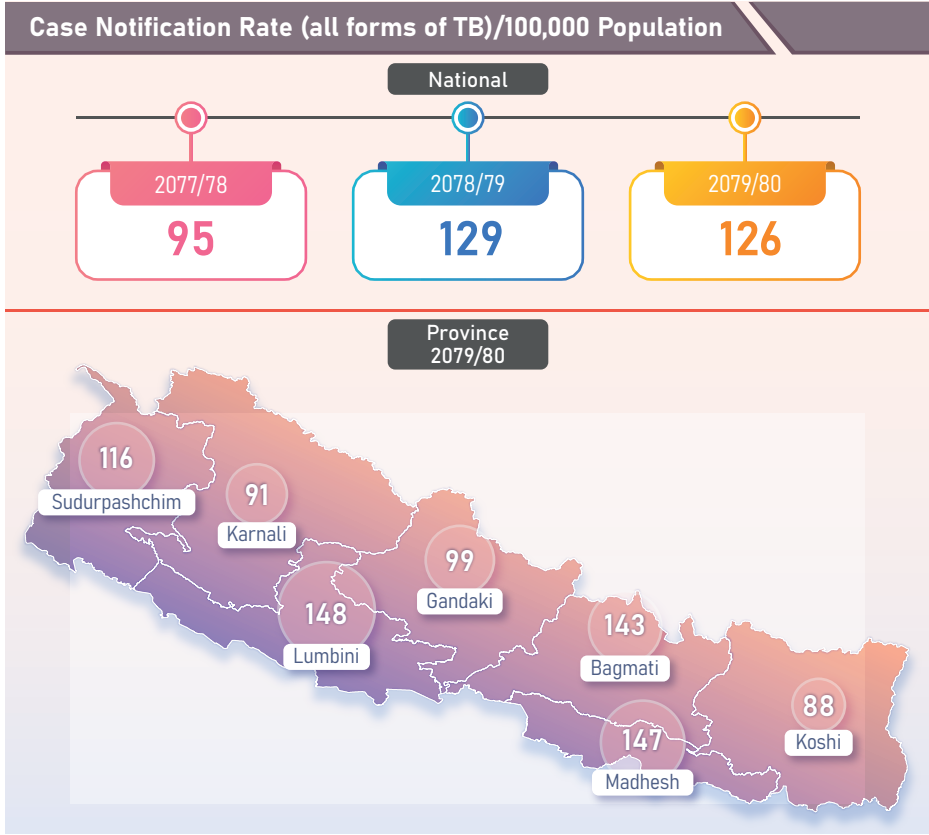
Schools Having Health and Nursing Services FY 2079/80



Impoverished Patients Provided with Treatment Support for Serious Diseases, FY2079/80 (in number)

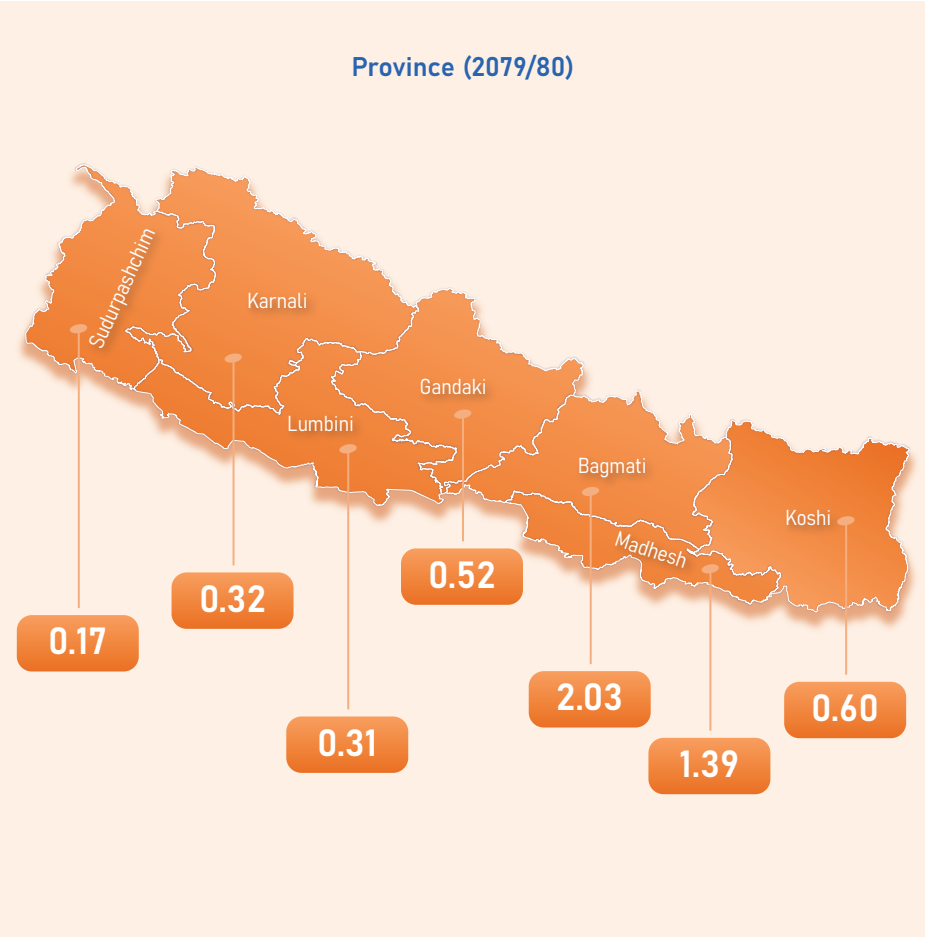
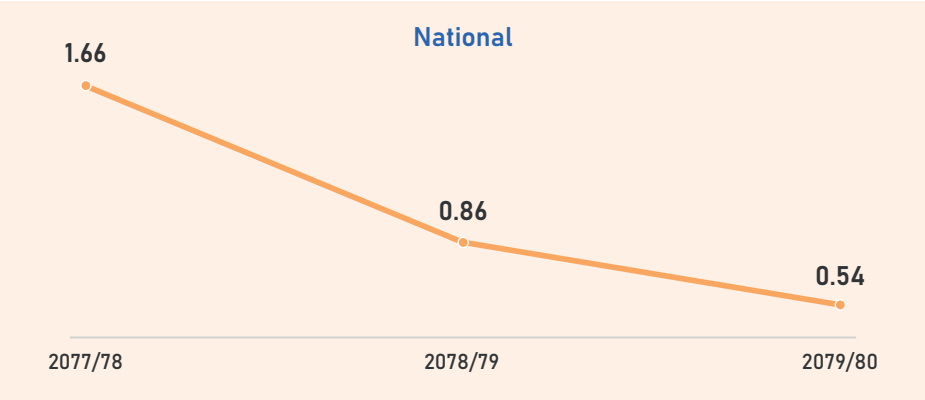


Tuberculosis Programme

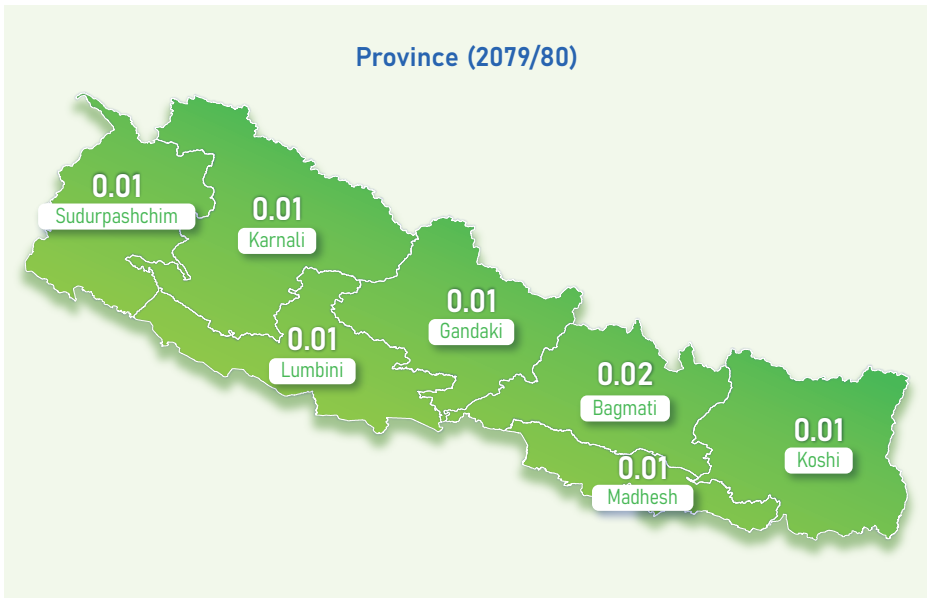
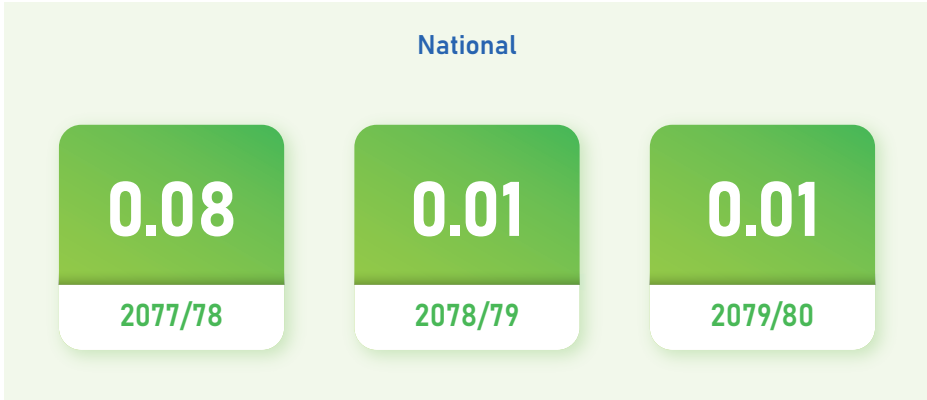


HIV/AIDS and STI Programme

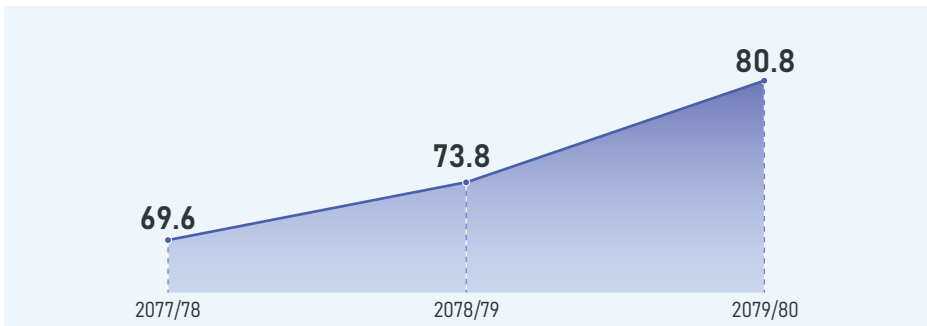
HIV Positivity Rate (%)



Percentage of HIV Positive ANC, NC and PNC Women

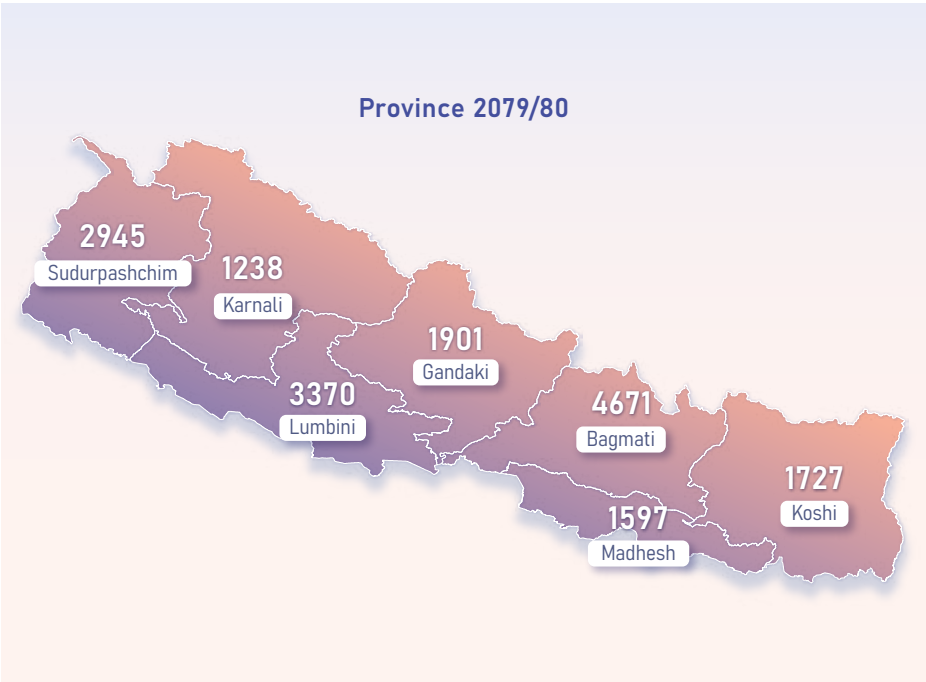
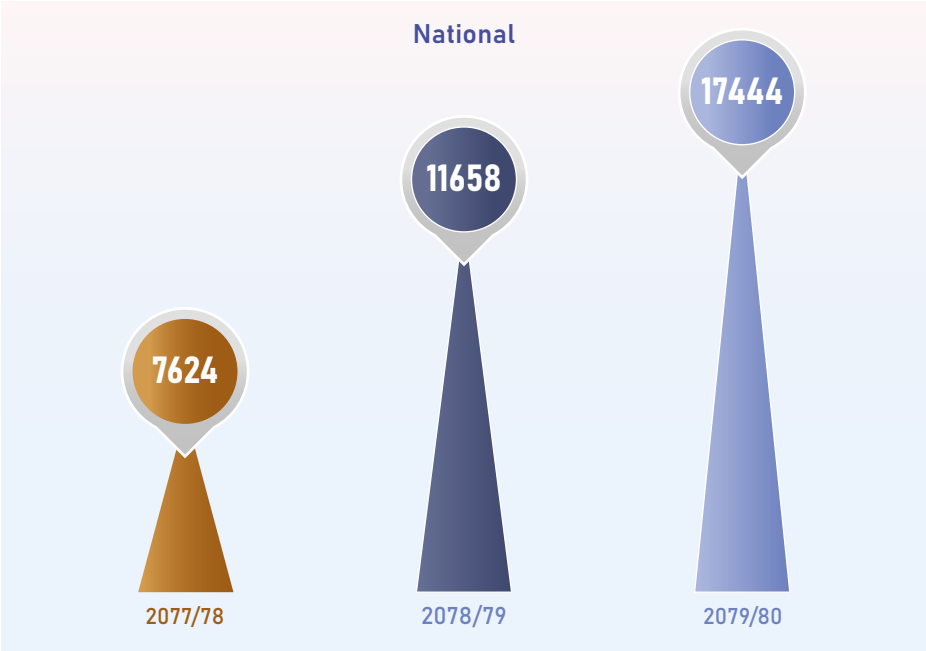


Percentage of People Living with HIV Currently Receiving Antiretroviral Therapy Among Estimated PLHIV



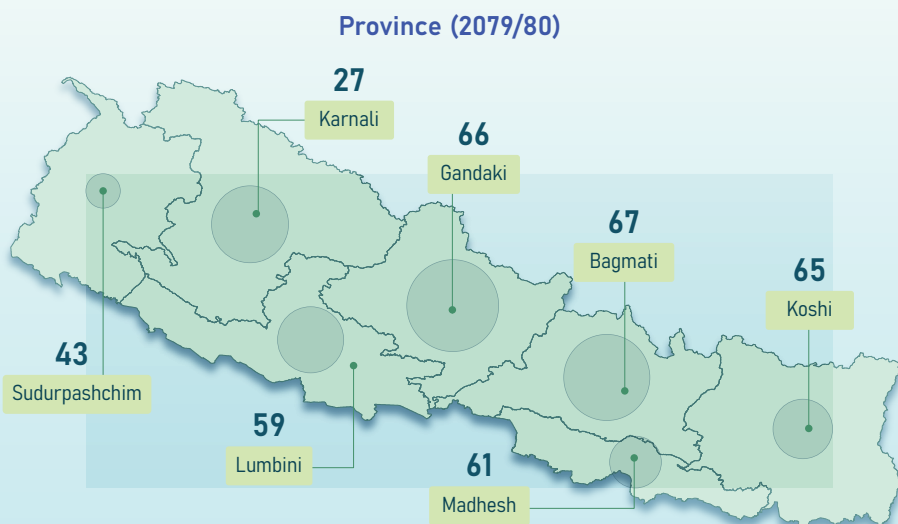
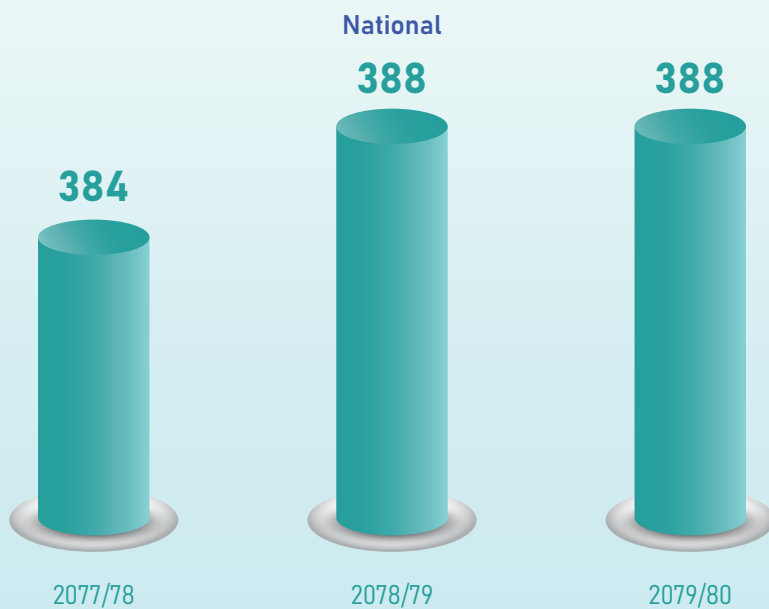
Health Training Programme

Number of Trained Health Professionals

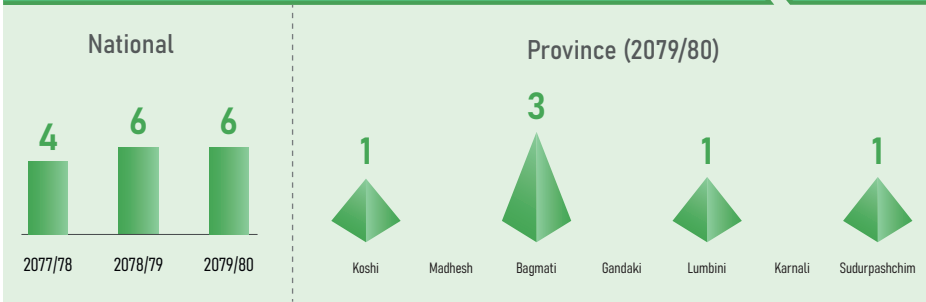


Ayurveda and Alternative Medicine

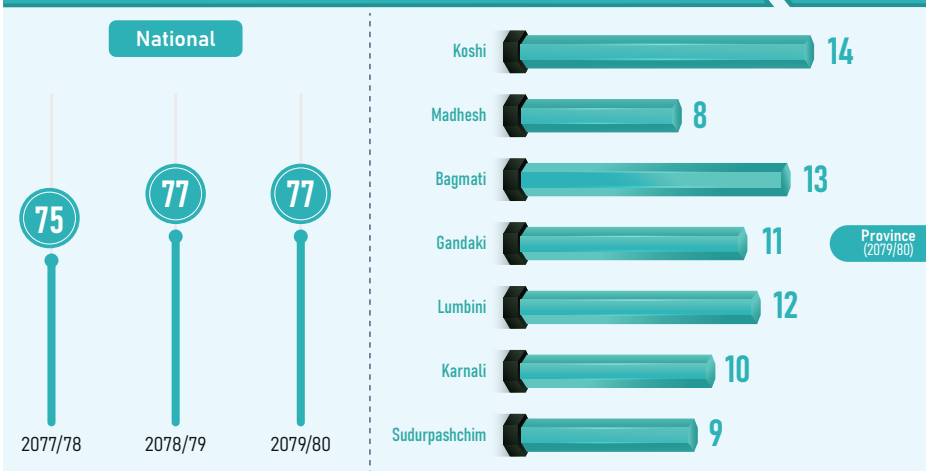
Health Facilities (Ayurveda) (in number)



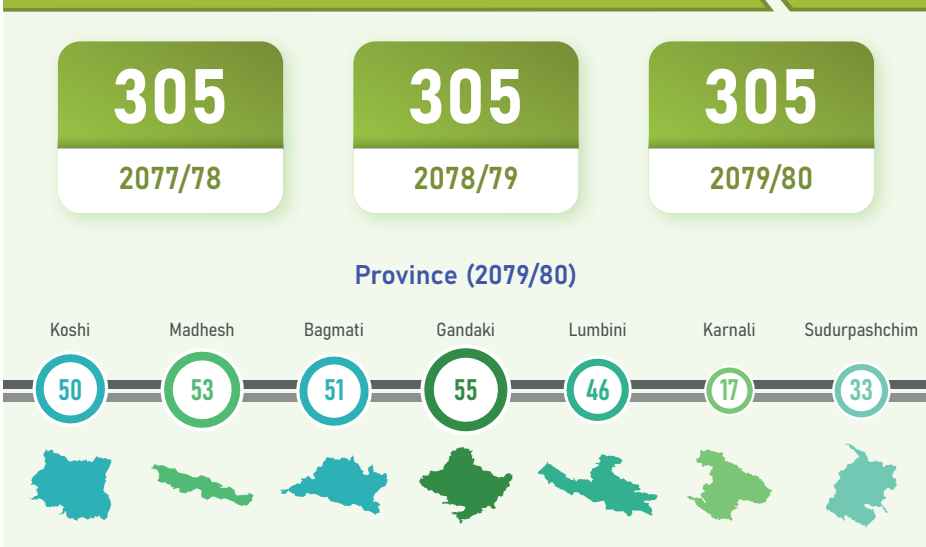
Public Ayurveda Hospitals (in number)



District Level Ayurveda Health Centre (in number)

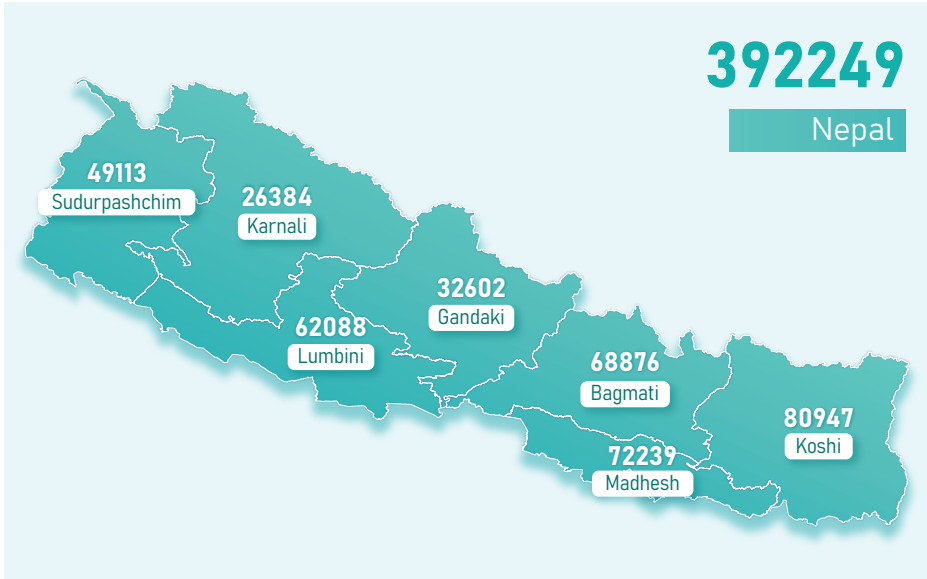


Ayurveda Aushadhalaya (in number)

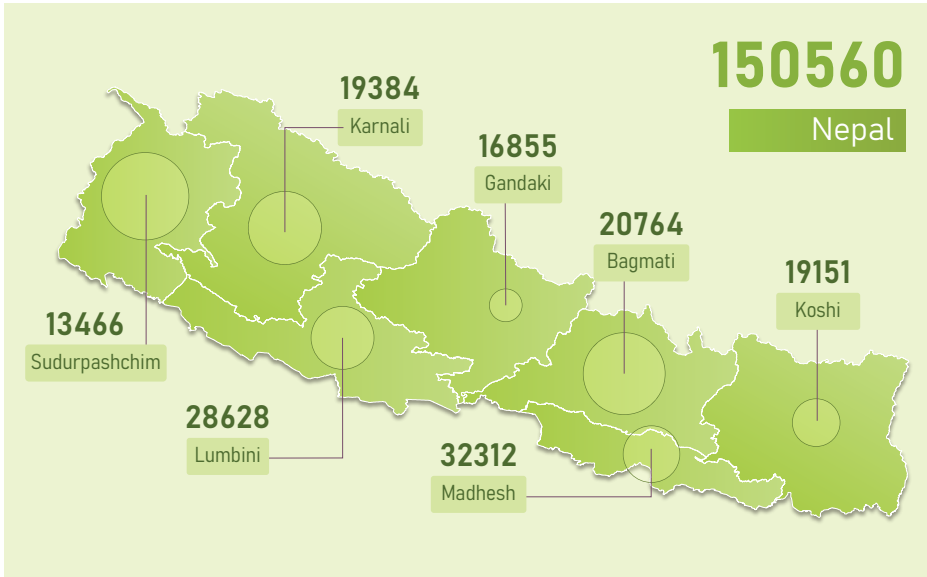


Free Ayurveda Basic Health Services

Purva Panchkarma Service (in number)



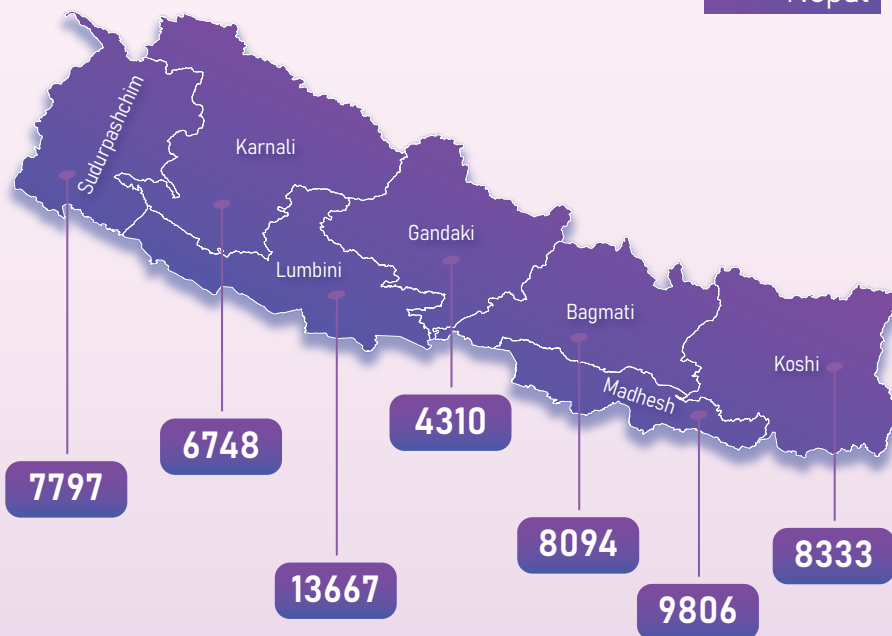
Yog Service (in number)



Stanpayi Aamako Lagi Satawari Vitaran
{Satawari (Galactagogue Medicines)}
(in number)

58755

Nepal

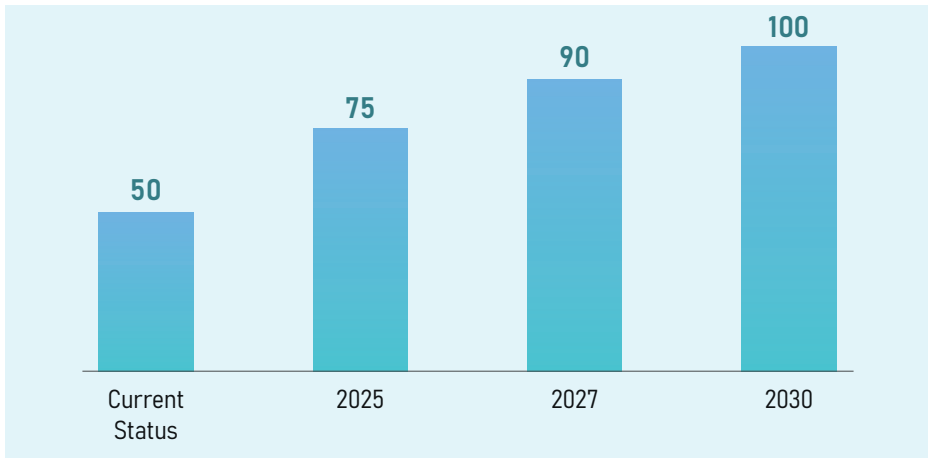


Performance of Drug Regularity

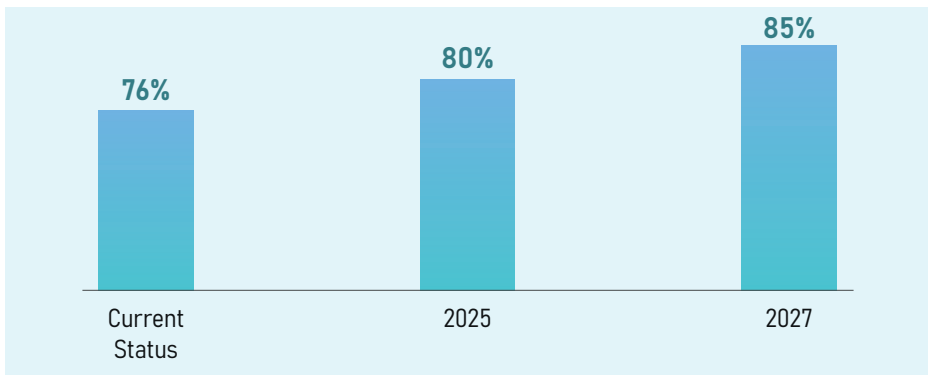
Maturity Level of National Regulatory Authority



% of WHO GMP Certified Domestic Manufactures of Drugs

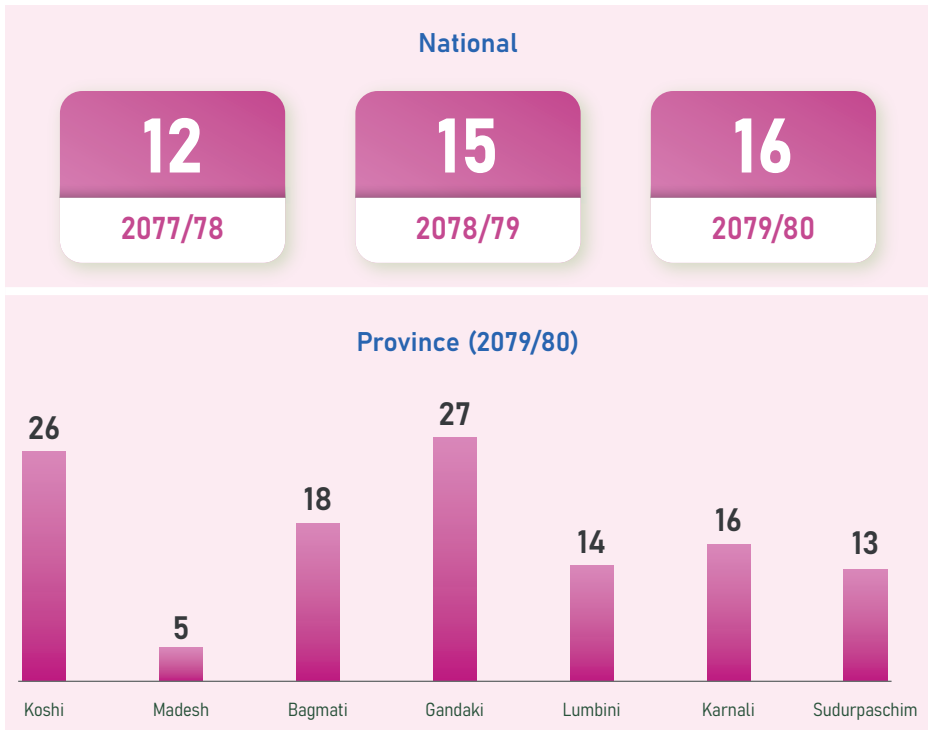


Domestic Production of Essential Medicines

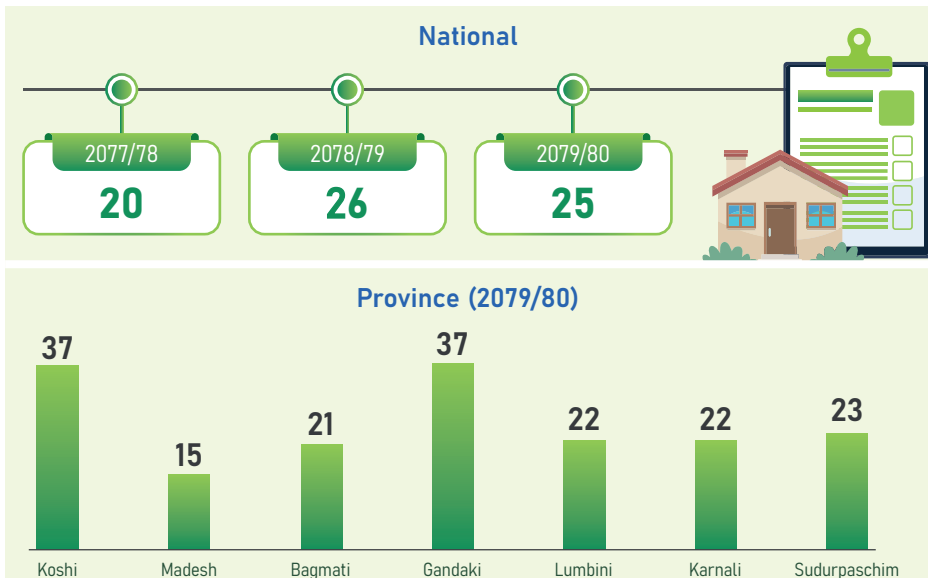


Health Insurance Coverage

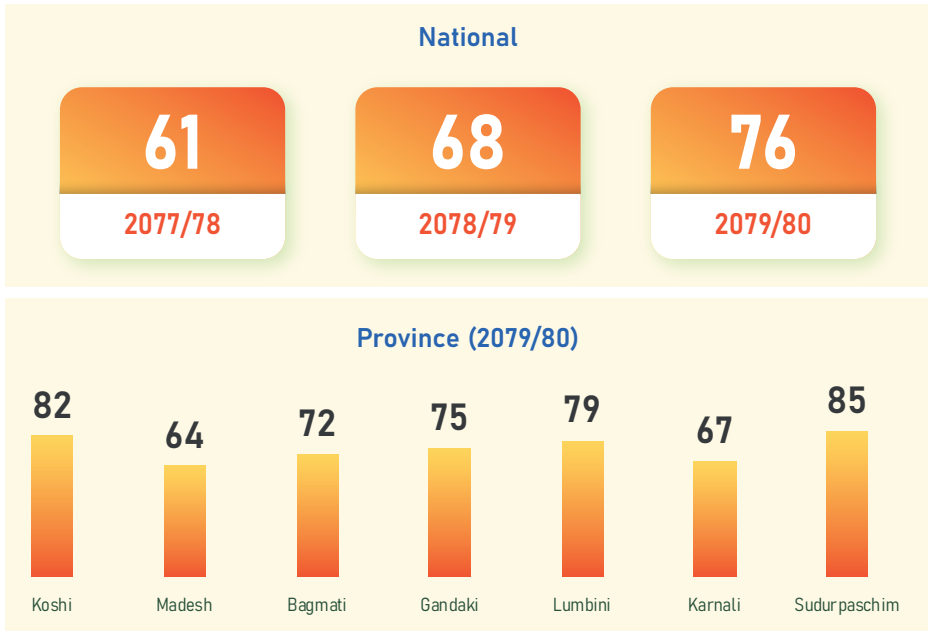
Population Coverage (%)



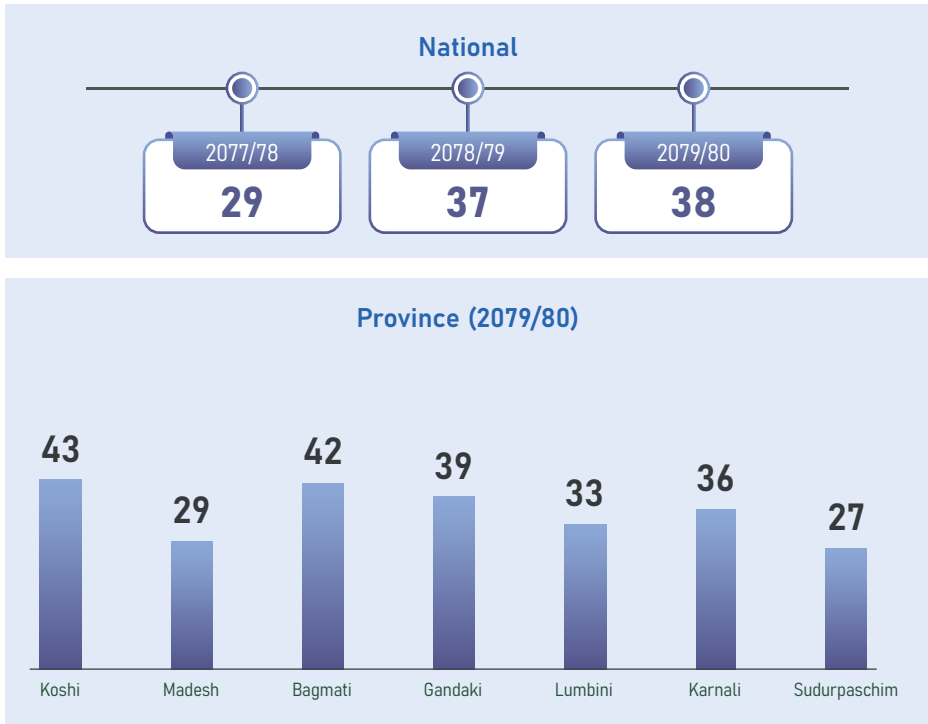
Household Coverage (%)



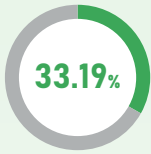
Renewable Rate (%)



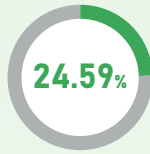
Service Utilization (%)



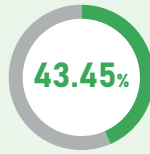
Health Insurance Coverage until 2079/80



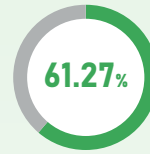
Insured families



Population insured



Population accessing insurance service



People renewing insurance



22,12,827

Total families insured



71,71,843

Total population insured

31,16,875

Insured people accessing insurance

43,94,394

People renewing insurance

14,35,080

Number of families renewing insurance

Source: Health Insurance Board, Teku; Figures are cumulative to the end of 2079/80



ANNEX

Department of Health Services
Trend of Health Service Coverage Fact Sheet
FY 2077/78 to 2079/80 (AD 2020/21 to 2022/23)

Indicators	Nepal			Province (2079/80 or 2022/23)							SDG Target 2030	Source
	2077/78 (2020/21)	2078/79 (2021/22)	2079/80 (2022/23)	Koshi	Madhesh	Bagmati	Gandaki	Lumbini	Karnali	Sudur Paschim		
NUMBER OF HEALTH FACILITIES												
Public hospitals	201	192	215	46	18	54	23	28	28	18		HMIS/DHIS2
PHCCs	189	188	187	33	32	40	25	29	13	15		HMIS/DHIS2
HPs	3794	3775	3778	632	740	643	487	568	332	376		HMIS/DHIS2
Non-public facilities	2082	2155	2551	217	250	1536	157	234	75	82		HMIS/DHIS2
Basic Health Service Center			7582	1302	1217	1303	942	1080	817	921		HMIS/DHIS2
Basic Hospitals (5 - 15 Beds)			246	81	27	63	16	25	17	17		HMIS/DHIS2
General Hospitals (25 - 50 Beds)			333	41	55	79	66	57	16	19		HMIS/DHIS2
General Hospitals (100 - 300 Beds)			79	11	16	26	9	12	3	2		HMIS/DHIS2
Specialized Hospitals (100 beds and Above)			28	6	2	12	0	4	0	4		HMIS/DHIS2
Super Speciality Hospitals (50+ Beds)			22	2	0	15	1	3	0	1		HMIS/DHIS2
Academy and Teaching Hospital (300+ Beds)			29	3	3	13	3	6	1	0		HMIS/DHIS2
Other Type of Health Facilities			2164	136	180	1430	93	175	83	67		HMIS/DHIS2
REPORTING STATUS												
Public hospitals (%)	80	88	95	99	100	90	91	93	100	100	100	HMIS/DHIS2
PHCCs (%)	100	100	100	100	100	100	100	100	100	100	100	HMIS/DHIS2
HPs (%)	100	100	100	100	100	100	100	100	100	100	100	HMIS/DHIS2
FCHVs (%)	90	90	96	94	96	94	98	98	93	96	100	HMIS/DHIS2
LMIS Reporting Status	97.6	99	98.3	96.2	97	99.6	99.2	99.2	99.3	97.3		eLMIS
IMMUNIZATION PROGRAMME												
BCG coverage (%)	91.0	103.5	102.2	97.1	107.8	119.9	85.3	102.7	90.7	86.8		HMIS/DHIS2
DPT-HepB-Hib3 coverage (%)	87.0	95.2	98.6	93.2	105.8	107.8	92.3	97.5	88.6	87.8	>95%	HMIS/DHIS2
MR2 coverage (12-23 months) (%)	81.0	92.8	94.7	87.0	97.8	105.6	87.7	93.9	87.7	93.0		HMIS/DHIS2
Fully immunized children (%)	78.0	91.2	84.1	74.3	84.9	88.0	75.2	87.7	85.0	91.3	95	HMIS/DHIS2
Dropout rate DPT-Hep B-Hib 1 vs 3 coverage (%)	1.0	3.7	2.0	1.8	3.3	1.4	1.5	1.3	3.9	0.0	< 5 %	HMIS/DHIS2
Pregnant women who received TD2 and TD2+ (%)	60.0	71.7	72.0	66.3	86.0	67.1	59.9	73.8	65.2	65.9		HMIS/DHIS2
NUTRITION PROGRAMME												
Children aged 0-11 months registered for growth monitoring (%)	84.0	104.1	109.2	107.9	105.4	115.7	117.6	109.7	113.1	100.3	100	HMIS/DHIS2
Underweight children among new GM visits (0-23 month) (%)	2.5*	3.2*	2.7	2.5	4.8	1.3	0.89	2.5	3.0	2.8		HMIS/DHIS2
Children aged 12-23 months registered for growth monitoring (%)	61.0	77.2	48.6	54.2	75.1	42.5	32.1	29.3	35.5	38.7	100	HMIS/DHIS2
Pregnant women who received 180 tablets of Iron (%)	45.0	60.0	75.0	115.7	56.7	53.8	79.2	84.3	77.0	68.6		HMIS/DHIS2
Postpartum mothers who received vitamin A supplements (%)	61.0	76.3	79.1	71.7	80.3	50.2	80.9	96.2	97.0	97.2		HMIS/DHIS2
INTEGRATED MANAGEMENT OF NEONATAL & CHILDHOOD ILLNESS (IMNCI) PROGRAMME STATUS												
% of children U5 years with Pneumonia treated with antibiotics (Amoxicillin) (%)	117.0	105.3	102.0	99.6	115.5	98.7	102.0	100.3	99.2	100.9	100	HMIS/DHIS2
Incidence of diarrhea per 1,000 under five years children (/1000)	339.0	365.0	115.1	79.1	129.3	78.8	82.5	110.5	216.0	161.6		HMIS/DHIS2
% of children under 5 with diarrhea treated with ORS and zinc	96.0	94.5	95.8	89.4	94.2	95.1	99.1	99.4	97.3	98.5	100	HMIS/DHIS2

*Values are determined based on 0-11 months

Department of Health Services
Trend of Health Service Coverage Fact Sheet
FY 2077/78 to 2079/80 (AD 2020/21 to 2022/23)

Indicators	Nepal			Province (2079/80 or 2022/23)							SDG Target 2030	Source
	2077/78 (2020/21)	2078/79 (2021/22)	2079/80 (2022/23)	Koshi	Madhesh	Bagmati	Gandaki	Lumbini	Karnali	Sudur Paschim		
SAFE MOTHERHOOD PROGRAMME STATUS												
Pregnant women who attended four ANC visits as per protocol (%)	70.0	79.2	93.5	96.8	71.6	125.9	134.5	88.8	85.0	73.6	90	HMIS/DHIS2
% of Institutional deliveries	65.0	79.0	83.4	86.0	64.8	100.5	67.9	96.4	83.4	85.8	90	HMIS/DHIS2
% of Deliveries conducted by skilled birth attendant	61	75	45.8	38.6	44.6	49.6	25.5	50.5	53.4	55.2	90	HMIS/DHIS2
% of Deliveries conducted by skilled health personnel			34.0	44.1	18.0	48.9	40.5	42.2	21.2	22.3		
% of Deliveries conducted by skilled health attendant + skilled health personnel	61	75	80	83	63	99	66	93	75	78		
% of Mothers who had three PNC check-up as per protocol	25.0	40.8	44.2	32.0	30.3	37.2	42.3	67.9	57.4	60.6	90	HMIS/DHIS2
FAMILY PLANNING PROGRAMME STATUS												
Contraceptive prevalence rate (CPR Adjusted) (%)	39	41	39	39	45	34	33	37	35	46	60	HMIS/DHIS2
Family Planning Current Users (Spacing methods) (%)	18	21	20	20	12	20	18	24	23	31		HMIS/DHIS2
FEMALE COMMUNITY HEALTH VOLUNTEERS PROGRAMME (FCHVs) STATUS												
Number of FCHVs	49605	50229	50665	8751	7636	9172	5834	8955	4272	6045		HMIS/DHIS2
% of mothers' group meeting held	89.0	95.0	96.2	94.1	99.0	95.0	92.6	97.5	95.4	99.8	100	HMIS/DHIS2
CURATIVE SERVICES												
% of population utilizing out- patient (OPD) services	77.0	92.0	75.5	78.3	60.5	78.6	88.4	77.3	87.7	74.2		HMIS/DHIS2
% of population utilizing Emergency services at hospitals	6.9	10.1	10.0	10.4	4.6	18.5	11.6	7.9	5.2	7.9		HMIS/DHIS2
% of population utilizing inpatients services at hospitals	3.8	10.1	5.4	8.1	2.5	8.3	5.2	4.9	3.4	2.9		HMIS/DHIS2
% of inpatients who referred out	1.9	1.7	1.8	1.5	1.7	1.1	2.7	2.5	3.8	2.3		HMIS/DHIS2
Bed occupancy rate (%)	35.0	46.6	50.5	50.7	49.2	52.7	43.9	55.5	42.8	34.9		HMIS/DHIS2
Average length of stay at hospital	3.0	3.5	3.6	2.7	2.9	4.6	3.1	4.1	3.1	2.5		HMIS/DHIS2
LEPROSY PROGRAMME												
New case detection rate (NCDR) per 100,000 population	7.2	7.8	8.5	9.3	15.1	1.9	4.7	10.8	4.2	8.3	7	HMIS/DHIS2
Prevalence rate (PR) per 10,000 population	0.7	0.8	0.8	0.8	1.3	0.1	0.4	1.1	0.5	0.9		EDCD
NCD PROGRAMME												
Number of Cardiovascular Disease			19262	3541	4347	7210	1300	1690	464	710		HMIS/DHIS2
Number of Diabetes			312342	84788	31932	83344	35422	51727	6079	19050		HMIS/DHIS2
Number of Cancer			67382	3905	92	62602	392	147	49	195		HMIS/DHIS2
ZOONOTIC												
Cases of Animal Bites (in number)	67316	94829	128512	18745	21982	19192	11094	37861	6010	13628		HMIS/DHIS2
Cases of Snake Bites (in number)	7902	9346	9120	2612	1460	988	1191	2519	208	142		HMIS/DHIS2
MALARIA												
Annual Blood Examination Rate (ABER) (%)	1.3	2.9	4.6	4.5	3.0	8.1	2.6	5.8	3.0	3.8		EDCD
Annual parasite incidence (API) per 1,000	0.03	0.05	0.05	0.01	0.06	0.03	0.02	0.11	0.03	0.06		EDCD
Percentage of PF among Malaria Positive case (%)	13.5	23.2	25.2	50.0	28.1	43.3	23.1	30.9	11.8	11.3		EDCD
Dengue Cases (in number)	489	733	56338	4960	2947	35486	3265	5574	2134	1972		HMIS/DHIS2
New Kala-azar Cases (in number)	212	322	199	9	12	18	7	54	68	31		EDCD

Department of Health Services
Trend of Health Service Coverage Fact Sheet
FY 2077/78 to 2079/80 (AD 2020/21 to 2022/23)

Indicators	Nepal			Province (2079/80 or 2022/23)							SDG Target 2030	Source
	2077/78 (2020/21)	2078/79 (2021/22)	2079/80 (2022/23)	Koshi	Madhesh	Bagmati	Gandaki	Lumbini	Karnali	Sudur Paschim		
NURSING AND SOCIAL SECURITY												
Number of new registered cases in OCMC			9597	1319	3216	817	234	1631	825	1555		HMIS/DHIS2
% of physical violence among the total new registered cases			31	27	21	37	26	49	50	26		HMIS/DHIS2
Number of new registered geriatric cases - Pneumonia			240	55	3	8	6	57	14	97		HMIS/DHIS2
Number of schools having health and nursing services			232	10	38	0	30	36	98	20		SHIS
TUBERCLUSIS												
Case notification rate (all forms of TB)/100,000 population	95	129	126	88	147	143	99	148	91	116		HMIS/DHIS2
Treatment success rate (%)	91.0	91.5	92.4	89.8	93.5	92.5	91.8	93.0	93.2	91.1	>90	HMIS/DHIS2
HIV/AIDS and STI PROGRAMME												
HIV Positivity rate (%)	1.66	0.86	0.54	0.60	1.39	2.03	0.52	0.31	0.32	0.17		HMIS/DHIS2
Percentage of HIV Positive ANC, NC and PNC women	0.08	0.01	0.01	0.01	0.01	0.02	0.01	0.01	0.01	0.01		HMIS/DHIS2
Percentage of people living with HIV currently receiving antiretroviral therapy among estimated PLHIV	69.6	73.8	80.8									HMIS/DHIS2
AYURVEDA AND ALTERNATIVE MEDICINE												
No. of Health Facilities (Ayurveda)	384	388	388	65	61	67	66	59	27	43		AHIMS
Public Ayurveda Hospitals (Number)	4	6	6	1	0	3	0	1	0	1		AHIMS
District level Ayurveda Health Centre (Number)	75	77	77	14	8	13	11	12	10	9		AHIMS
Ayurveda Aushadhalaya (Number)	305	305	305	50	53	51	55	46	17	33		AHIMS
FREE AYURVEDA BASIC HEALTH SERVICES												
Purva Panchkarma service (Number)			392249	80947	72239	68876	32602	62088	26384	49113		AHIMS
Yog Service (Number)			150560	19151	32312	20764	16855	28628	19384	13466		AHIMS
Stanpayi Aamako lagi Satawari Vitaran {Satawari (galactagogue medicines)} (Number)			58755	8333	9806	8094	4310	13667	6748	7797		AHIMS
HEALTH INSURANCE												
Population coverage (%)	11.5	14.7	16.1	25.5	5.1	18.0	26.9	13.5	15.7	13.2		HIB
Household coverage (%)	20.4	26.4	24.7	36.6	14.9	21.0	37.2	21.8	21.8	23.3		HIB
Renewable rate (%)	60.5	68.2	76.2	81.7	64.4	71.6	74.7	79.3	67.1	84.5		HIB
Service utilization (%)	28.6	36.8	38.0	42.6	28.8	42.0	38.7	32.5	36.0	27.2		HIB

स्वास्थ्य सेवाका उपलब्धि सूचकाङ्कहरू
आ.व. २०७७/७८ देखि २०७९/८० सम्म
(सन् २०२०/२१ देखि २०२२/२३ सम्म)

सूचक	नेपाल			प्रदेश (२०७९/८० अर्थात् २०२२/२३)							विवि लक्ष्य २०३०	स्रोत
	२०७७/७८ (२०२०/२१)	२०७८/७९ (२०२१/२२)	२०७९/८० (२०२२/२३)	कोशी	मधेश	बागमती	गण्डकी	लुम्बिनी	कर्णाली	सुदूरपश्चिम		
स्वास्थ्य संस्था (सङ्ख्या)												
सार्वजनिक अस्पताल	२०१	१९२	२१५	४६	१८	५४	२३	२८	२८	१८		HMIS/DHIS2
प्राथमिक स्वास्थ्य सेवा केन्द्र	१८९	१८८	१८७	३३	३२	४०	२५	२९	१३	१५		HMIS/DHIS2
स्वास्थ्य चौकी	३७९४	३७७५	३७७८	६३२	७४०	६४३	४८७	५६८	३३२	३७६		HMIS/DHIS2
निजी, सामुदायिक तथा गैर सरकारी स्वास्थ्य संस्था	२०८२	२१५५	२५५१	२१७	२५०	१५३६	१५७	२३४	७५	८२		HMIS/DHIS2
आधारभूत स्वास्थ्य सेवा केन्द्र			७५८२	१३०२	१२१७	१३०३	९४२	१०८०	८१७	९२१		HMIS/DHIS2
आधारभूत अस्पताल (५-१५ शैया)			२४६	८१	२७	६३	१६	२५	१७	१७		HMIS/DHIS2
साधारण अस्पताल (२५-५० शैया)			३३३	४१	५५	७९	६६	५७	१६	१९		HMIS/DHIS2
साधारण अस्पताल (१००-३०० शैया)			७९	११	१६	२६	९	१२	३	२		HMIS/DHIS2
विशेषीकृत अस्पताल (१०० शैया भन्दा माथि)			२८	६	२	१२	०	४	०	४		HMIS/DHIS2
सुपर स्पेशियलिटी अस्पताल (५० शैया भन्दा माथि)			२२	२	०	१५	१	३	०	१		HMIS/DHIS2
प्रतिष्ठान तथा शिक्षण अस्पताल (३०० शैयाभन्दा माथि)			२९	३	३	१३	३	६	१	०		HMIS/DHIS2
अन्य प्रकारका स्वास्थ्य संस्था			२१६४	१३६	१८०	१४३०	९३	१७५	८३	६७		HMIS/DHIS2
प्रतिवेदनको अवस्था												
सार्वजनिक अस्पताल (प्रतिशत)	८०	८८	९५	९९	१००	९०	९१	९३	१००	१००	१००	HMIS/DHIS2
प्राथमिक स्वास्थ्य सेवा केन्द्र (प्रतिशत)	१००	१००	१००	१००	१००	१००	१००	१००	१००	१००	१००	HMIS/DHIS2
स्वास्थ्य चौकी (प्रतिशत)	१००	१००	१००	१००	१००	१००	१००	१००	१००	१००	१००	HMIS/DHIS2
सामुदायिक महिला स्वास्थ्य स्वयंसेविका (प्रतिशत)	९०	९०	९६	९४	९६	९४	९८	९८	९३	९६	१००	HMIS/DHIS2
LMIS प्रतिवेदनको अवस्था	९७.६	९९	९८.३	९६.२	९७	९९.६	९९.२	९९.२	९९.३	९७.३		eLMIS
खोप कार्यक्रम												
बिसिजी खोप कभरेज (प्रतिशत)	९१.०	१०३.५	१०२.२	९७.१	१०७.८	११९.९	८५.३	१०२.७	९०.७	८६.८		HMIS/DHIS2
डिपीटी-हेप बी-हिब३ कभरेज (प्रतिशत)	८७.०	९५.२	९८.६	९३.२	१०५.८	१०७.८	९२.३	९७.५	८८.६	८७.८	>९५%	HMIS/DHIS2
एमआर२ कभरेज (१२-२३ महिना) (प्रतिशत)	८१.०	९२.८	९४.७	८७.०	९७.८	१०५.६	८७.७	९३.९	८७.७	९३.०		HMIS/DHIS2
पूर्ण खोप लगाएका बालबालिका (प्रतिशत)	७८.०	९१.२	८४.१	७४.३	८४.९	८८.०	७५.२	८७.७	८५.०	९१.३	९५	HMIS/DHIS2
डिपीटी-हेप बी-हिब१ सँग ३ को ड्रपआउट दर (प्रतिशत)	१.०	३.७	२.०	१.८	३.३	१.४	१.५	१.३	३.९	०.०	< ५ %	HMIS/DHIS2
गर्भवती महिलाले टीडी२ र टीडी२+ खोप लगाएको प्रतिशत	६०.०	७१.७	७२.०	६६.३	८६.०	६७.१	५९.९	७३.८	६५.२	६५.९		HMIS/DHIS2
पोषण कार्यक्रम												
तौल अनुगमनका लागि दर्ता भएका ०-११ महिना उमेरका बालबालिकाको प्रतिशत	८४.०	१०४.१	१०९.२	१०७.९	१०५.४	११५.७	११७.६	१०९.७	११३.१	१००.३	१००	HMIS/DHIS2
नयाँ तौल अनुगमन गरिएका ०-२३ महिनाका बालबालिकामध्ये कम तौल भएका बालबालिकाको प्रतिशत	२.५*	३.२*	२.७	२.५	४.८	१.३	०.८९	२.५	३.०	२.८		HMIS/DHIS2
तौल अनुगमनका लागि दर्ता भएका १२-२३ महिना उमेरका बालबालिकाहरूको प्रतिशत	६१.०	७७.२	४८.६	५४.२	७५.१	४२.५	३२.१	२९.३	३५.५	३८.७	१००	HMIS/DHIS2
गर्भवती महिलाले १८० दिनको आईरन फोलिक एसिड चक्री प्राप्त गरेको प्रतिशत	४५.०	६०.०	७५.०	११५.७	५६.७	५३.८	७९.२	८४.३	७७.०	६८.६		HMIS/DHIS2
भिटामिन ए प्राप्त गर्ने सुत्केरी आमाको प्रतिशत	६१.०	७६.३	७९.१	७१.७	८०.३	५०.२	८०.९	९६.२	९७.०	९७.२		HMIS/DHIS2

*उल्लिखित अङ्क ०-११ महिनामा आधारित हुन् ।

स्वास्थ्य सेवाका उपलब्धि सूचकाङ्कहरू
आ.व. २०७७/७८ देखि २०७९/८० सम्म
(सन् २०२०/२१ देखि २०२२/२३ सम्म)

सूचक	नेपाल			प्रदेश (२०७९/८० अर्थात् २०२२/२३)							दिवि लक्ष्य २०३०	स्रोत
	२०७७/७८ (२०२०/२१)	२०७८/७९ (२०२१/२२)	२०७९/८० (२०२२/२३)	कोशी	मधेश	बागमती	गण्डकी	लुम्बिनी	कर्णाली	सुदूरपश्चिम		
नवजात शिशु तथा बाल रोगको एकीकृत व्यवस्थापन कार्यक्रम												
५ वर्ष मुनिका निमोनिया भएकामध्ये एमोक्सिसिलिन एन्टिबायोटिकले उपचार गरिएका बालबालिकाको प्रतिशत	११७.०	१०५.३	१०२.०	९९.६	११५.५	९८.७	१०२.०	१००.३	९९.२	१००.९	१००	HMIS/DHIS2
५ वर्ष मुनिका बालबालिकामा झाडापखालाको प्रकोप दर (प्रति हजारमा)	३३९.०	३६५.०	११५.१	७९.१	१२९.३	७८.८	८२.५	११०.५	२१६.०	१६१.६		HMIS/DHIS2
५ वर्ष मुनिका झाडापखाला भएकामध्ये जिङ्ग र पुनर्जलीय झोलबाट उपचार गरिएका बालबालिकाको प्रतिशत	९६.०	९४.५	९५.८	८९.४	९४.२	९५.१	९९.१	९९.४	९७.३	९८.५	१००	HMIS/DHIS2
सुरक्षित मातृत्व कार्यक्रम												
प्रोटोकलअनुसार चारपटक गर्भवती जाँच गराउने महिलाको प्रतिशत	७०.०	७९.२	९३.५	९६.८	७१.६	१२५.९	१३४.५	८८.८	८५.०	७३.६	९०	HMIS/DHIS2
स्वास्थ्य संस्थामा आएर प्रसूति गराउने दर (प्रतिशत)	६५.०	७९.०	८३.४	८६.०	६४.८	१००.५	६७.९	९६.४	८३.४	८५.८	९०	HMIS/DHIS2
दक्ष प्रसूतिकर्मीद्वारा प्रसूति गराएको प्रतिशत	६१	७५	४५.८	३८.६	४४.६	४९.६	२५.५	५०.५	५३.४	५५.२	९०	HMIS/DHIS2
विशेष दक्ष प्रसूतिकर्मीद्वारा प्रसूति गराएको प्रतिशत			३४.०	४४.१	१८.०	४८.९	४०.५	४२.२	२१.२	२२.३		
दक्ष प्रसूतिकर्मीद्वारा प्रसूति गराएको प्रतिशत + विशेष दक्ष प्रसूतिकर्मीद्वारा प्रसूति गराएको प्रतिशत	६१	७५	८०	८३	६३	९९	६६	९३	७५	७८		
प्रोटोकलअनुसार तीनपटक सुत्केरी जाँच गराउने आमाको प्रतिशत	२५.०	४०.८	४४.२	३२.०	३०.३	३७.२	४२.३	६७.९	५७.४	६०.६	९०	HMIS/DHIS2
परिवार नियोजन कार्यक्रम												
परिवार नियोजनका साधन प्रयोग दर (सिपिआर एडजस्टेड)	३९	४१	३९	३९	४५	३४	३३	३७	३५	४६	६०	HMIS/DHIS2
परिवार नियोजनका साधन प्रयोगकर्ता दर (करेन्ट)	१८	२१	२०	२०	१२	२०	१८	२४	२३	३१		HMIS/DHIS2
महिला स्वास्थ्य स्वयंसेविका कार्यक्रम												
सामुदायिक महिला स्वास्थ्य स्वयंसेविका सङ्ख्या	४९६०५	५०२२९	५०६६५	८७५१	७६३६	९१७२	५८३४	८९५५	४२७२	६०४५		HMIS/DHIS2
आमा समूहको बैठक बसेको (प्रतिशत)	८९.०	९५.०	९६.२	९४.१	९९.०	९५.०	९२.६	९७.५	९५.४	९९.८	१००	HMIS/DHIS2
उपचारात्मक सेवा												
बहिरङ्ग सेवा लिने जनसङ्ख्याको प्रतिशत	७७.०	९२.०	७५.५	७८.३	६०.५	७८.६	८८.४	७७.३	८७.७	७४.२		HMIS/DHIS2
अस्पतालको आपतकालीन सेवा लिने प्रतिशत	६.९	१०.१	१०.०	१०.४	४.६	१८.५	११.६	७.९	५.२	७.९		HMIS/DHIS2
अस्पतामा भर्ना भएर सेवा लिने जनसङ्ख्याको प्रतिशत	३.८	१०.१	५.४	८.१	२.५	८.३	५.२	४.९	३.४	२.९		HMIS/DHIS2
भर्ना भएकामध्ये रिफर भई जाने विरामीको प्रतिशत	१.९	१.७	१.८	१.५	१.७	१.१	२.७	२.५	३.८	२.३		HMIS/DHIS2
बिड अकुपेन्सी दर	३५.०	४६.६	५०.५	५०.७	४९.२	५२.७	४३.९	५५.५	४२.८	३४.९		HMIS/DHIS2
अस्पतालमा भर्ना भई बस्ने औसत दिन	३.०	३.५	३.६	२.७	२.९	४.६	३.१	४.१	३.१	२.५		HMIS/DHIS2
कुष्ठरोग नियन्त्रण कार्यक्रम												
नयाँ कुष्ठरोगी विरामी पत्ता लाग्ने दर प्रति एकलाख जनसङ्ख्यामा	७.२	७.८	८.५	९.३	१५.१	१.९	४.७	१०.८	४.२	८.३	७	HMIS/DHIS2
कुष्ठरोगको रोग प्रिभ्यालेन्स दर प्रति दशहजार जनसङ्ख्यामा	०.७	०.८	०.८	०.८	१.३	०.१	०.४	१.१	०.५	०.९		EDCD
नसर्ने रोग कार्यक्रम												
कार्डियोभास्कुलर रोगका विरामीको सङ्ख्या			१९२६२	३५४१	४३४७	७२१०	१३००	१६९०	४६४	७१०		HMIS/DHIS2
मधुमेह रोगका विरामीको सङ्ख्या			३१२३४२	८४७८८	३१९३२	८३३४४	३५४२२	५१७२७	६०७९	१९०५०		HMIS/DHIS2
क्यान्सर रोगका विरामीको सङ्ख्या			६७३८२	३९०५	९२	६२६०२	३९२	१४७	४९	१९५		HMIS/DHIS2

स्वास्थ्य सेवाका उपलब्धि सूचकाङ्कहरू
आ.व. २०७७/७८ देखि २०७९/८० सम्म
(सन् २०२०/२१ देखि २०२२/२३ सम्म)

सूचक	नेपाल			प्रदेश (२०७९/८० अर्थात् २०२२/२३)							दिवि लक्ष्य	स्रोत
	२०७७/७८ (२०२०/२१)	२०७८/७९ (२०२१/२२)	२०७९/८० (२०२२/२३)	कोशी	मधेश	बागमती	गण्डकी	लुम्बिनी	कर्णाली	सुदूरपश्चिम	२०३०	
जुनोटेक												
जनावरको टोकाईबाट भएका बिरामी सङ्ख्या	६७३१६	९४८२९	१२८५१२	१८७४५	२१९८२	१९९९२	११०९४	३७८६१	६०१०	१३६२८		HMIS/DHIS2
सर्पको टोकाईबाट भएका बिरामी सङ्ख्या	७९०२	९३४६	९९२०	२६१२	१४६०	९८८	११९१	२५१९	२०८	१४२		HMIS/DHIS2
औलो नियन्त्रण कार्यक्रम												
वार्षिक रक्त स्लाईड नमुना परीक्षण दर प्रतिशत	१.३	२.९	४.६	४.५	३.०	८.१	२.६	५.८	३.०	३.८		EDCD
वार्षिक औलो प्रकोप जोखिम दर (एपीआई) प्रति हजार जनसङ्ख्यामा	०.०३	०.०५	०.०५	०.०१	०.०६	०.०३	०.०२	०.११	०.०३	०.०६		EDCD
परीक्षण गरिएकामध्ये औलो पि.एफ.पोजिटिभ दर (प्रतिशत)	१३.५	२३.२	२५.२	५०.०	२८.१	४३.३	२३.१	३०.९	११.८	११.३		EDCD
डेङ्गु बिरामीको सङ्ख्या	४८९	७३३	५६३३८	४९६०	२९४७	३५४८६	३२६५	५५७४	२१३४	१९७२		HMIS/DHIS2
कालाज्वर बिरामीको सङ्ख्या	२१२	३२२	१९९	९	१२	१८	७	५४	६८	३१		EDCD
नर्सिङ तथा सामाजिक सुरक्षा												
OCCM मा नयाँ दर्ता भएका सङ्ख्या			९५९७	१३१९	३२१६	८१७	२३४	१६३१	८२५	१५५५		HMIS/DHIS2
नयाँ दर्ता भएकामध्ये शारीरिक हिसामा परेका सङ्ख्या प्रतिशतमा			३१	२७	२१	३७	२६	४९	५०	२६		HMIS/DHIS2
नयाँ दर्ता भएका जेरियाट्रिक सङ्ख्या - निर्मानिया			२४०	५५	३	८	६	५७	१४	९७		HMIS/DHIS2
स्वास्थ्य तथा नर्सिङ सेवा उपलब्ध भएका विद्यालय			२३२	१०	३८	०	३०	३६	९८	२०		SHIS
क्षयरोग नियन्त्रण कार्यक्रम												
क्षयरोगका बिरामी पहिचान दर (सबै प्रकारका) प्रति एकलाख जनसङ्ख्यामा	९५	१२९	१२६	८८	१४७	१४३	९९	१४८	९१	११६		HMIS/DHIS2
क्षयरोग उपचार सफलताको दर	९१.०	९१.५	९२.४	८९.८	९३.५	९२.५	९१.८	९३.०	९३.२	९१.१	>९०	HMIS/DHIS2
एचआईभी एड्स तथा यौन रोग नियन्त्रण कार्यक्रम												
एचआईभी प्रकोप दर (प्रतिशत)	१.६६	०.८६	०.५४	०.६०	१.३९	२.०३	०.५२	०.३१	०.३२	०.१७		HMIS/DHIS2
पूर्व प्रसूति, प्रसूति र उत्तर प्रसूति महिलामा एचआईभी पोजिटिभ (प्रतिशत)	०.०८	०.०१	०.०१	०.०१	०.०१	०.०२	०.०१	०.०१	०.०१	०.०१		HMIS/DHIS2
हाल अनुमानित PLHIV मध्ये एन्टिरेट्रोभाइरल थेरापी प्राप्त गर्दै एचआईभी संग बाँचिरहेका मानिसहरूको प्रतिशत	६९.६	७३.८	८०.८									HMIS/DHIS2
आयुर्वेद तथा वैकल्पिक चिकित्सा												
स्वास्थ्य संस्थाको सङ्ख्या (आयुर्वेद)	३८४	३८८	३८८	६५	६१	६७	६६	५९	२७	४३		AHIMS
सार्वजनिक आयुर्वेद अस्पताल	४	६	६	१	०	३	०	१	०	१		AHIMS
जिल्ला स्तरका आयुर्वेद स्वास्थ्य केन्द्रको सङ्ख्या	७५	७७	७७	१४	८	१३	११	१२	१०	९		AHIMS
आयुर्वेद औषधालयको सङ्ख्या	३०५	३०५	३०५	५०	५३	५१	५५	४६	१७	३३		AHIMS
निशुल्क आयुर्वेद आधारभूत स्वास्थ्य सेवा												
पूर्व पञ्चकर्म सेवा			३९२२४९	८०९४७	७२२३९	६८८७६	३२६०२	६२०८८	२६३८४	४९११३		AHIMS
योग सेवा			१५०५६०	१९१५१	३२३१२	२०७६४	१६८५५	२८६२८	१९३८४	१३४६६		AHIMS
स्तनपायी आमाका लागि दुग्धवर्द्धक औषधि सतावरी वितरण			५८७५५	८३३३	९८०६	८०९४	४३१०	१३६६७	६७४८	७७९७		AHIMS
स्वास्थ्य बीमा												
जनसङ्ख्या कभरेज प्रतिशतमा	११.५	१४.७	१६.१	२५.५	५.१	१८.०	२६.९	१३.५	१५.७	१३.२		HIB
घरपरिवार कभरेज प्रतिशतमा	२०.४	२६.४	२४.७	३६.६	१४.९	२१.०	३७.२	२१.८	२१.८	२३.३		HIB
नविकरण दर (प्रतिशत)	६०.५	६८.२	७६.२	८१.७	६४.४	७१.६	७४.७	७९.३	६७.१	८४.५		HIB
सेवा प्रयोग दर (प्रतिशत)	२८.६	३६.८	३८.०	४२.६	२८.८	४२.०	३८.७	३२.५	३६.०	२७.२		HIB

Nepali Fiscal Years and the corresponding Gregorian Years

Nepali Fiscal Year	Gregorian Year
2060/61	2003/04
2061/63	2004/05
2062/63	2005/06
2063/64	2006/07
2064/65	2007/08
2065/66	2008/09
2066/67	2009/10
2067/68	2010/11
2068/69	2011/12
2069/70	2012/13
2070/71	2013/14
2071/72	2014/15
2072/73	2015/16
2073/74	2016/17
2074/75	2017/18
2075/76	2018/19
2076/77	2019/20
2077/78	2020/21
2078/79	2021/22
2079/80	2022/23
2080/81	2023/24
2081/82	2024/25
2082/83	2025/26
2083/84	2026/27
2084/85	2027/28
2085/86	2028/29

यो नेपाल हेल्थ फ्याक्ट सीटस् २०२३
तलको क्यू आर कोडमा क्लिक गरेर समेत
हेर्न सकिन्छ ।





Government of Nepal
Ministry of Health and Population
Department of Health Services
Kathmandu