



# नेपाल सरकार

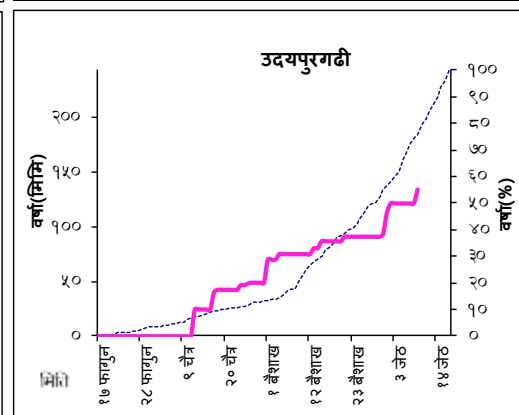
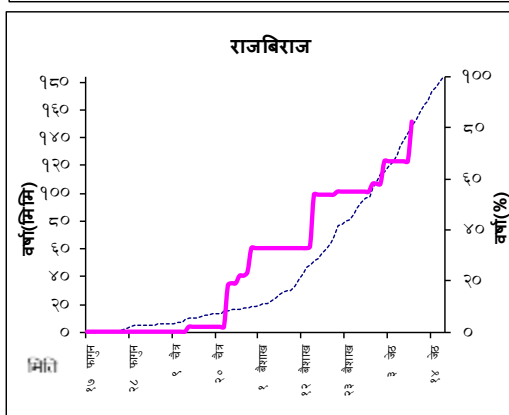
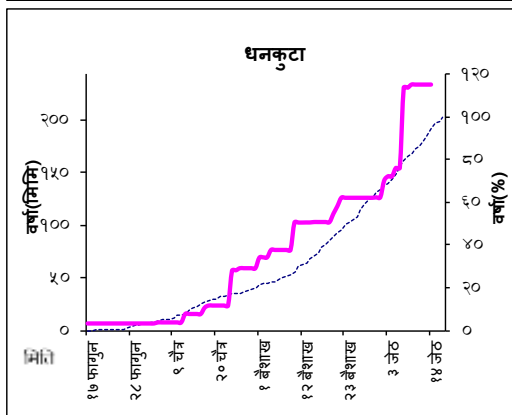
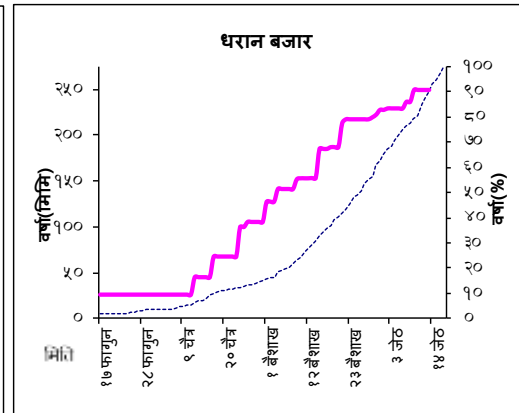
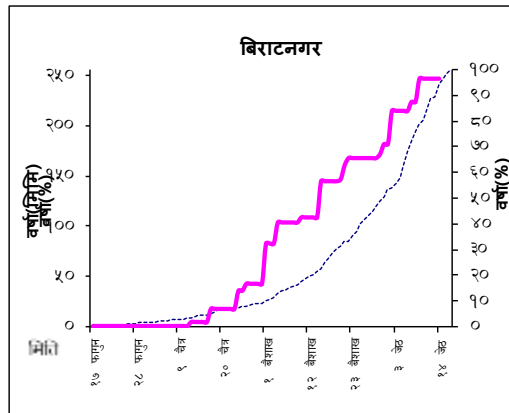
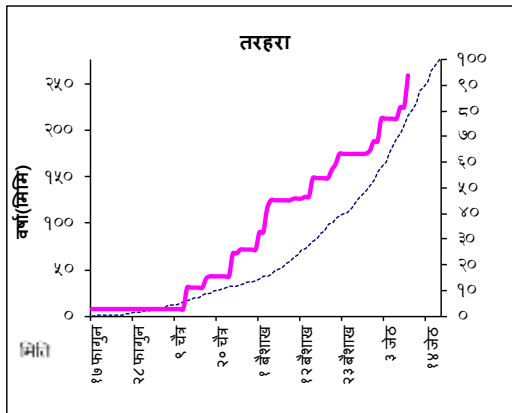
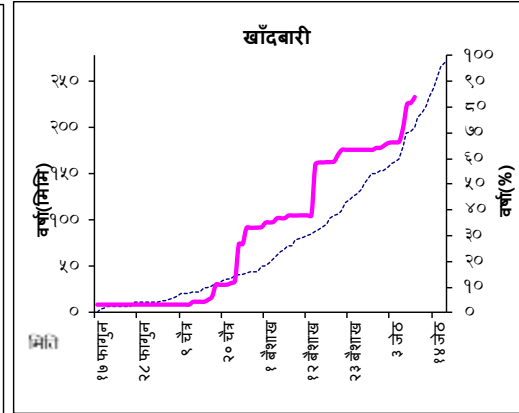
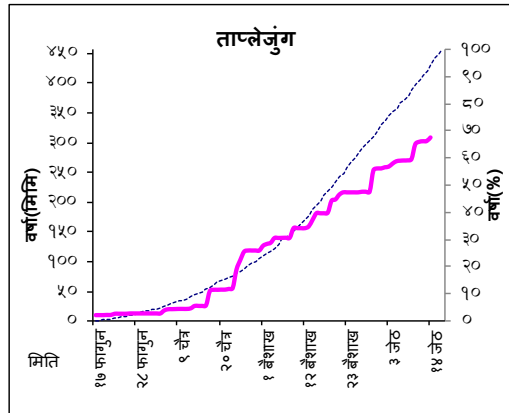
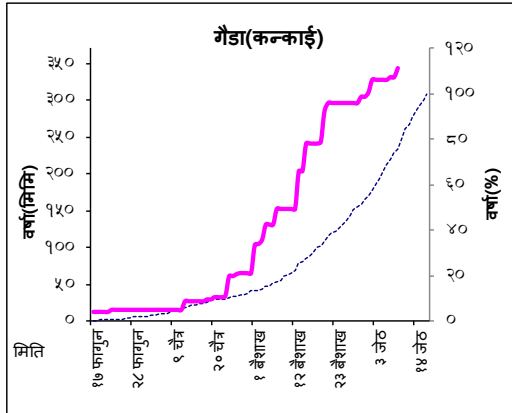
## ऊर्जा, जलस्रोत तथा सिंचाइ मन्त्रालय

### जल तथा मौसम विज्ञान विभाग

नागपोखरी, काठमाण्डौ, नेपाल ।

### पूर्व-वर्षा ऋतु अनुगमन

(१ मार्च - ३१ मे)



**नोट: माथिका नक्साहरूमा निलो ड्यास रेखाले ३० वर्ष १९८०-२०१० को संचित वर्षाको औसत देखाउँदछ भने गुलाबी रेखाले यो सालको संचित औसत देखाउँदछ।**



