

NEPAL TOURISM STATISTICS 2019



Government of Nepal
Ministry of Culture, Tourism & Civil Aviation
Singhadurbar, Kathmandu

2020

Published Date : 2020
Number of Copies : 1000
Cover Photo : Makalu Himal (8,485 m.)

Copyright @ Ministry of Culture, Tourism & Civil Aviation

Published by:

Ministry of Culture, Tourism & Civil Aviation
Singha Durbar, Kathmandu
Tel: 4211846, 4211685 Ext. 416
Fax: 4211758, 4211672
Email: info@tourism.gov.np
Website: www.tourism.gov.np



Government of Nepal
MINISTRY OF CULTURE, TOURISM & CIVIL AVIATION

Singha Durbar, Kathmandu
Nepal

E-mail: motca@ntc.net.np

Fax No. 4211758

4211845

4211685

4211785

4211593



Ref. No.:

Foreword

Nepal is uniquely endowed with rich and diverse natural and cultural attraction due to its geographical location in the Himalayas. Nowhere else earth is there such an incomparable cultural heritage nor such a rich environmental spectrum from the highest mountains to the terai plains. Strategically located between two fastest growing countries of China and India, tourism in Nepal is a sector of competitive advantages which can be instrumental in spreading benefits and providing alternative economic opportunities to built peace and prosperity for the people of Nepal. It is one of the potential sectors for the economic development of Nepal. It is a major source of earning foreign currency.

The Ministry is pleased to bring "Nepal Tourism Statistics 2019" as an annual publication. It aims to provide information about tourists by type, length of stay, purpose of visit and tourism activities, revenue generation, tourism industries and other miscellaneous information. Tourist incoming is slightly increased in the year 2019. Government of Nepal is focusing on to develop tourism infrastructure; airports, roads, trails and other facilities. Current tourism policy, strategic action plan and development plan are keeping focus to develop tourism sector as important sector of economy, supporting people's livelihood and uplifting living standards. Ministry is committed to keep all efforts to improve and develop the tourism sector to put Nepal as leading place of tourism.

This statistical report is compilation of information received from Department of Tourism, Department of Immigration, Department of Wild life conservation, Nepal Rastra Bank, Nepal Mountaineering association and other related organizations

I believe the publication helps to fulfill the data gap and explore possibility for the development of tourism sectors. The information included in this publication will be useful to all stakeholders, policy makers, planners, entrepreneurs, researchers and all other interested in tourism sectors.

I am very much indebted to all the government and non-government organizations for providing necessary information. I would like to thank those who have been involved in bringing this publication. The Ministry always welcomes constructive comments and suggestions for improving this publication in the future.

Kedar Bahadur Adhikari

Secretary

2020

TABLE OF CONTENTS

CONTENTS	PAGE
PART I : FACT SHEET	1
PART II : TOURIST ARRIVALS.....	7
TABLE 2.1: TOURIST ARRIVAL AND AVERAGE LENGTH OF STAY, 1964-2019.....	9
TABLE 2.1: TOURIST ARRIVAL AND AVERAGE LENGTH OF STAY, 1964-2019	10
TABLE 2.2: TOURIST ARRIVAL BY MONTH, 1992-2019	12
TABLE 2.2: TOURIST ARRIVAL BY MONTH, 1992-2019 (contd.).....	13
TABLE 2.3: TOURIST ARRIVAL BY MONTH, 1992-2019(Excluding Indian citizens).....	16
TABLE 2.3: TOURIST ARRIVAL BY MONTH, 1992-2019 (Excluding Indian citizens) (contd.) ...	17
TABLE 2.4: INDIAN TOURIST ARRIVAL BY MONTH, BY AIR, 1992-2019	18
TABLE 2.5: TOURIST ARRIVAL BY YEAR, 1993-2019.....	20
TABLE 2.6: TOURIST ARRIVAL BY SEX, 1993-2019	22
TABLE 2.7: TOURIST ARRIVAL BY AGE GROUPS, 1993-2019.....	24
TABLE 2.8: TOURIST ARRIVAL BY MAJOR NATIONALITIES, 2010-2019	27
TABLE 2.8: TOURIST ARRIVAL BY MAJOR NATIONALITIES, 2010-2019 (contd.).....	28
TABLE 2.9: TOURIST ARRIVAL BY MAJOR NATIONALITIES & MONTH, 2017-2019.....	29
TABLE 2.10: TOURIST ARRIVAL BY ENTRY POINTS (LAND), 2019.....	33
TABLE 2.11: TOURIST ARRIVAL BY COUNTRY AND MONTH (LAND), 2019	34
PART III : LENGTH OF STAY.....	35
TABLE 3.1: TOURIST ARRIVAL AND AVERAGE LENGTH OF STAY, 1975-2019	37
PART IV : PURPOSE OF VISIT.....	39
TABLE 4.1: TOURIST ARRIVAL BY PURPOSE OF VISIT, 1993-2019	41
TABLE 4.1: TOURIST ARRIVAL BY PURPOSE OF VISIT, 1993-2019 (contd.).....	42
PART V : TREKKING AND EXPEDITION.....	45
TABLE 5.1: NUMBER OF TREKKERS IN DIFFERENT TREKKING AREAS BY MONTH, 2019 ..	47

TABLE 5.2:	NUMBER OF TREKKERS IN DIFFERENT TREKKING AREA, 2001-2019.....	48
TABLE 5.3:	TREKKERS IN PROTECTED AREAS BY MONTH, 2019	49
Table 5.4:	NUMBER OF FOREIGNERS VISITED AT NATIONAL PARKS AND CONSERVATION AREAS BY MONTH, FY 2075/76	50
TABLE 5.5:	NUMBER OF FOREIGN VISITORS TO NATIONAL PARKS & CONSERVATION AREAS, 2071/72- 075/76	51
TABLE 5.6:	NUMBER OF EXPEDITION TEAMS, MEMBERS & SUMMITEERS BY PEAK, 2019....	52
TABLE 5.9:	NUMBER OF CLIMBERS BY COUNTRY, 2019	55
TABLE 5.11:	NUMBER OF SUMMITEERS BY COUNTRY AND MOUNTAIN, 2019	58
TABLE 5.10:	NUMBER OF EXPEDITION TEAM MEMBERS PAYING ROYALTY BY PEAKS, 2019....	62
TABLE 5.11:	NUMBER OF CLIMBERS BY PEAK, 2019 (Permit Issued By Nepal Mountaineering Association).....	65
TABLE 5.12:	Royalty Received BY PEAK, 2019	70

PART VI PILGRIMAGE71

TABLE 6.1:	VISITORS (EXCLUDING INDIANS CITIZEN) TO PASHUPATI AREA BY MONTH, 2013-2019	73
TABLE 6.2:	INDIAN VISITORS TO LUMBINI BY MONTH, 2011-2019.....	74
TABLE 6.3:	COUNTRY-WISE VISIT TO BIRTH PLACE OF LORD BUDDHA, LUMBINI (except Indian citizens), 2016 to 2019	75
TABLE 6.3:	COUNTRY-WISE VISIT TO BIRTH PLACE OF LORD BUDDHA, LUMBINI (except Indian citizens), by 2019.....	76
TABLE6.4:	SUMMARY OF VISITORS BY BROAD ORIGIN IN LUMBINI BY MONTH, 2019	78

PART VII INCOME GENERATION.....81

TABLE 7.1:	GROSS FOREIGN EXCHANGE EARNINGS FROM TOURISM BY FISCAL YEAR, 2057/58 TO 2076/77*	83
TABLE 7.2:	FOREIGN EXCHANGE EARNINGS FROM TOURISM, 2000/01-2018/19.....	85
TABLE 7.4:	SOME ECONOMIC INDICATORS OF HOTEL AND RESTAURANT (NSIC CATEGORY) BY FY 2068/69 to 2075/76P	86

PART VIII : FLIGHT AND PASSENGER MOVEMENT87

TABLE 8.1: NUMBER OF INTERNATIONAL FLIGHT AND PASSENGER MOVEMENT BY MONTH, 2019 89

TABLE 8.2: NUMBER OF INTERNATIONAL FLIGHT & PASSENGER MOVEMENT, 2011-2019 90

TABLE 8.3: INTERNATIONAL AIRLINES WISE FLIGHT AND PASSENGER MOVEMENT, 201990

TABLE 8.4: NUMBER OF DOMESTIC FLIGHT & PASSENGER MOVEMENT, 2011-2019 92

TABLE 8.5: NUMBER OF DOMESTIC FLIGHT & PASSENGER MOVEMENT BY MONTH, 2019..... 92

TABLE 8.6: NUMBER OF DOMESTIC FLIGHT & PASSENGER MOVEMENT BY DOMESTIC AIRLINES, 2019 93

TABLE 8.7: NUMBER OF PARAGLIDING IN POKHARA BY MONTHS, 2015-2019 94

PART IX TOURISM INDUSTRY.....95

TABLE 9.1: TOURIST STANDARD HOTEL REGISTERED IN NEPAL 97

TABLE 9.2: TOURIST INDUSTRIES AND GUIDE IN NEPAL 98

TABLE 9.3: REGISTERED HOME STAY, 2017-2019 99

TABLE 9.4: MAJOR CIVIL AVIATION INDICATORS, NEPAL..... 102

PART X : TOURISM EDUCATION 103

TABLE 10.1: TOURISM AND HOTEL MANAGEMENT RELATED EDUCATION AND TRAININGS, 2067/-2076/77 105

PART XI : MISCELLANEOUS..... 107

TABLE 11.1: TOURIST RELATED ACCIDENT/INCIDENT REPORTED BY MONTH, 2075/76 109

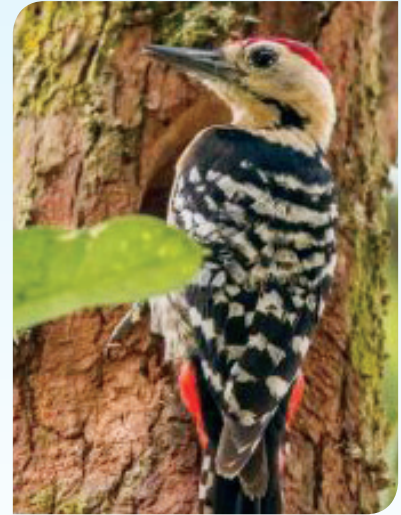
TABLE: 11.2 TOURIST RELATED ACCIDENT/INCIDENT REPORTED BY NATIONALITY, 2075/76 110

TABLE: 11.3 TOURIST RELATED ACCIDENT/INCIDENT REPORTED BY GENDER, 2075/76..... 112

TABLE: 11.4 BASIS OF INVESTIGATION 2075-076 113

CHARTS

CHART 2.1: TOURIST ARRIVAL IN NEPAL 2010-2019	11
CHART 2.2: TOURIST ARRIVAL BY MONTH, 2015-2019	14
CHART 2.3: TOURIST ARRIVAL BY SEASONS, 2015-2019	15
CHART: 2.3 TOURIST ARRIVALS BY COUNTRY, 2010-2019	21
CHART 2.4: TOURIST ARRIVAL BY SEX, 2010-2019	23
CHART 2.5: TOURIST ARRIVALS BY AGE GROUP, 2015-2019	26
Chart 4.1: Purpose of visit 2019.....	43
Chart 6.1 Visitors distribution of Lumbini by broad country origin, 2019	79
Chart 7.1: GROSS FOREIGN EXCHANGE EARNINGS FROM TOURISM.....	84



PART
I

FACT SHEET

FACT SHEET 1

Indicators	2018	2019	% Change
Tourist Arrival by:			
Air	969287	995884	2.67
Land	203785	201307	-1.23
Total	1173072	1197191	2.01
Average Length of Stay	12.4	12.7	2.2
Sex:			
Male	624928	626866	
Female	548144	570325	
By Age groups:			
0-15 years	54870	57523	4.8
16-30 years	269648	254399	-5.7
31-45 years	360237	383155	6.4
46-60 years	303452	305651	0.7
61+ years	173299	176872	2.1
Not Specified	11566	19591	69.4
Top Five Country of Nationality:			
Rank 1	India	India	
Rank 2	China	China	
Rank 3	USA	USA	
Rank 4	Srilanka	United Kingdom	
Rank 5	United Kingdom	Srilanka	
Purpose of Visit:			
Holiday/Pleasure	703843	778173	10.56
Pilgrimage	187692	197786	5.38
Trekking & Mountaineering	169180	171937	1.63
Others	112357	49301	-56.12

FACT SHEET 2

Indicators	2018	2019	% Change
Tourist Arrival by Major Five Airlines:			
Rank 1	Nepal Airlines	Nepal Airlines	
Rank 2	Jet Airways	Qatar Airways	
Rank 3	Qatar Air	Fly Dubai	
Rank 4	Fly Dubai	Air India	
Rank 5	Air India	Air Arabia	
Mountaineering Expedition:			
Total Team	1910	1921	0.6
Total Person	8641	8202	-5.1
Royalty to Government (Rs.' 000)	467938	568269	21.4
Revenue from Tourism:			
Total Earning(US\$ ' 000)	703179	724337	3.0
Average expenses / Visitor / day (US\$)	44	48	9.1
Tourism Related Enterprises :			
Hotel (star)	129	138	7.0
Hotel (Non star)	1125	1151	2.3
Beds (total)	40856	43999	7.7
Travel Agencies	3508	3680	4.9
Trekking Agencies	2649	2764	4.3
Tourist Guide	4126	4200	1.8
Trekking Guide	16248	17625	8.5

FACT SHEET 3

Indicators	2018	2019	% Change
Places Visited:			
National Parks and Wildlife Reserve	395791	429764	8.6
Pashupati Area (excluding Indian)	163311	171937	5.3
Lumbini (excluding Indian Tourists)	169180	173083	2.3
Manaslu Trekking	7371	6070	-17.7
Mustang Trekking	4116	3739	-9.2
HumlaTrekking	10814	8670	-19.8
Lower Dolpa Trekking	1222	1360	11.3
Kanchanjunga Trekking	970	911	-6.1
Upper Dolpa Trekking	525	530	1.0
International Airlines Movement:			
Arrival	16964	16212	-4.4
Departure	16961	16213	-4.4
Total	33925	32425	-4.4





In 2019, approximately 1.2 million international tourists visited Nepal. This represented a 2% increase on the numbers in 2018, when 11,73,072 tourists visited Nepal. Major reasons for less increment in tourist arrivals are; shut downs of major international airline (Jet airways), decrease in TIA operation hours due to runway maintenance.

Out of total tourist arrivals, five countries occupy almost 53 percent. The proportion of tourists from these countries are; India (21.2%), China (14.2%), USA (7.8%), United Kingdom (5.1%) and Srilanka (4.7%) respectively. Similar seasonality exists in tourist arrivals as in previous year. The highest number of arrival is observed in October followed by November. The highest percentage of arrivals was of age category 31-45 (32%) in year 2019.

Of the total, 83 percentage of international travelers travelled by air and 17 percentages by land.

PART
II

TOURIST ARRIVALS

TABLE 2.1: TOURIST ARRIVAL AND AVERAGE LENGTH OF STAY, 1964-2019

Year	Total		By Air		By Land		Average Length of Stay
	Number	Annual Growth Rate (%)	Number	Percent	Number	Percent	
1964	9,526	30.9	8,435	88.5	1,091	11.5	NA
1965	9,388	-1.4	8,303	88.4	1,085	11.6	NA
1966	12,567	33.9	11,206	89.2	1,361	10.8	NA
1967	18,093	44.0	15,064	83.3	3,029	16.7	NA
1968	24,209	33.8	19,717	81.4	4,492	18.6	NA
1969	34,901	44.2	28,130	80.6	6,771	19.4	NA
1970	45,970	31.7	36,508	79.4	9,462	20.6	NA
1971	49,914	8.6	40,369	80.9	9,545	19.1	NA
1972	52,930	6.0	42,484	80.3	10,446	19.7	NA
1973	68,047	28.6	55,791	82.0	12,256	18.0	NA
1974	89,838	32.0	74,170	82.6	15,668	17.4	13.20
1975	92,440	2.9	78,995	85.5	13,445	14.5	13.05
1976	105,108	13.7	90,498	86.1	14,610	13.9	12.41
1977	129,329	23.0	110,180	85.2	19,149	14.8	11.60
1978	156,123	20.7	130,034	83.3	26,089	16.7	11.84
1979	162,276	3.9	137,865	85.0	24,411	15.0	12.02
1980	162,897	0.4	139,387	85.6	23,510	14.4	11.18
1981	161,669	-0.8	142,084	87.9	19,585	12.1	10.49
1982	175,448	8.5	153,509	87.5	21,939	12.5	13.33
1983	179,405	2.3	152,470	85.0	26,935	15.0	11.53
1984	176,634	-1.5	149,920	84.9	26,714	15.1	11.55
1985	180,989	2.5	151,870	83.9	29,119	16.1	11.30
1986	223,331	23.4	182,745	81.8	40,586	18.2	11.16
1987	248,080	11.1	205,611	82.9	42,469	17.1	11.98
1988	265,943	7.2	234,945	88.3	30,998	11.7	12.00
1989	239,945	53.7	207,907	86.6	32,038	13.4	12.00
1990	254,885	6.2	226,421	88.8	28,464	11.2	12.00
1991	292,995	15.0	267,932	91.4	25,063	8.6	9.25
1992	334,353	14.1	300,496	89.9	33,857	10.1	10.14
1993	293,567	-12.2	254,140	86.6	39,427	13.4	11.94

TABLE 2.1: TOURIST ARRIVAL AND AVERAGE LENGTH OF STAY, 1964-2019

Year	Total		By Air		By Land		Average Length of Stay
	Number	Growth Rate (%)	Number	Percent	Number	Percent	
1994	326,531	11.2	289,381	88.6	37,150	11.4	10.00
1995	363,395	11.3	325,035	89.4	38,360	10.6	11.27
1996	393,613	8.3	343,246	87.2	50,367	12.8	13.50
1997	421,857	7.2	371,145	88.0	50,712	12.0	10.49
1998	463,684	9.9	398,008	85.8	65,676	14.2	10.76
1999	491,504	6.0	421,243	85.7	70,261	14.3	12.28
2000	463,646	-5.7	376,914	81.3	86,732	18.7	11.88
2001	361,237	-22.1	299,514	82.9	61,723	17.1	11.93
2002	275,468	-23.7	218,660	79.4	56,808	20.6	7.92
2003	338,132	22.7	275,438	81.5	62,694	18.5	9.60
2004	385,297	13.9	297,335	77.2	87,962	22.8	13.51
2005	375,398	-2.6	277,346	73.9	98,052	26.1	9.09
2006	383,926	2.3	283,819	73.9	100,107	26.1	10.20
2007	526,705	37.2	360,713	68.5	165,992	31.5	11.96
2008	500,277	-5.0	374,661	74.9	125,616	25.1	11.78
2009	509,956	1.9	379,322	74.4	130,634	25.6	11.32
2010	602,867	18.2	448,800	74.4	154,067	25.6	12.67
2011	736,215	22.1	545,221	74.1	190,994	25.9	13.12
2012	803,092	9.1	598,258	74.5	204,834	25.5	12.16
2013	797,616	-0.7	594,848	74.6	202,768	25.4	12.60
2014	790118	-0.9	585981	74.2	204137	25.8	12.44
2015	538970	-32	407412	75.6	131558	24.4	13.16
2016	753002	40	572563	76	180439	24	13.4
2017	940218	25	760577	81	179641	19	12.6
2018	1173072	25	969287	82.63	203785	17.37	12.4
2019	1197191	2.05	995884	83.19	201307	16.81	12.7

Source: Department of Immigration, Nepal

CHART 2.1: TOURIST ARRIVAL IN NEPAL 2010-2019

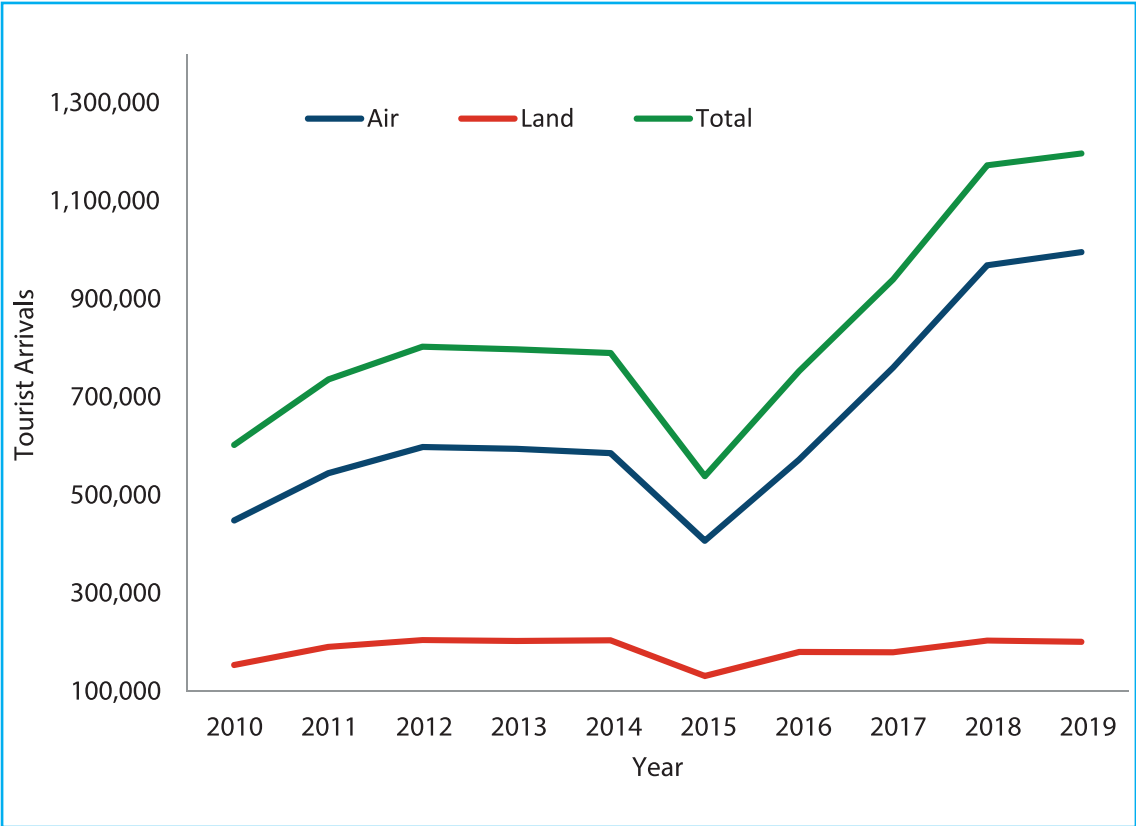


TABLE 2.2: TOURIST ARRIVAL BY MONTH, 1992-2019

Year	Jan.	Feb.	Mar.	Apr.	May	Jun.	Jul.	Aug.	Sep.	Oct.	Nov.	Dec.	Total
1992	17,451	27,489	31,505	30,682	29,089	22,469	20,942	27,338	24,839	42,647	32,341	27,561	334,353
1993	19,238	23,931	30,818	20,121	20,585	19,602	13,588	21,583	23,939	42,242	30,378	27,542	293,567
1994	21,735	24,872	31,586	27,292	26,232	22,907	19,739	27,610	27,959	39,393	28,008	29,198	326,531
1995	22,207	28,240	34,219	33,994	27,843	25,650	23,980	27,686	30,569	46,845	35,782	26,380	363,395
1996	27,886	29,676	39,336	36,331	29,728	26,749	22,684	29,080	32,181	47,314	37,650	34,998	393,613
1997	25,585	32,861	43,177	35,229	33,456	26,367	26,091	35,549	31,981	56,272	40,173	35,116	421,857
1998	28,822	37,956	41,338	41,087	35,814	29,181	27,895	36,174	39,664	62,487	47,403	35,863	463,684
1999	29,752	38,134	46,218	40,774	42,712	31,049	27,193	38,449	44,117	66,543	48,865	37,698	491,504
2000	25,307	38,959	44,944	43,635	28,363	26,933	24,480	34,670	43,523	59,195	52,993	40,644	463,646
2001	30,454	38,680	46,709	39,083	28,345	13,030	18,329	25,322	31,170	41,245	30,282	18,588	361,237
2002	17,176	20,668	28,815	21,253	19,887	17,218	16,621	21,093	23,752	35,272	28,723	24,990	275,468
2003	21,215	24,349	27,737	25,851	22,704	20,351	22,661	27,568	28,724	45,459	38,398	33,115	338,132
2004	30,988	35,631	44,290	33,514	26,802	19,793	24,860	33,162	25,496	43,373	36,381	31,007	385,297
2005	25,477	20,338	29,875	23,414	25,541	22,608	23,996	36,910	36,066	51,498	41,505	38,170	375,398

TABLE 2.2: TOURIST ARRIVAL BY MONTH, 1992-2019 (contd.)

Year	Jan.	Feb.	Mar.	Apr.	May	Jun.	Jul.	Aug.	Sep.	Oct.	Nov.	Dec.	Total
2006	28,769	25,728	36,873	21,983	22,870	26,210	25,183	33,150	33,362	49,670	44,119	36,009	383,926
2007	33,192	39,934	54,722	40,942	35,854	31,316	35,437	44,683	45,552	70,644	52,273	42,156	526,705
2008	36,913	46,675	58,735	38,475	30,410	24,349	25,427	40,011	41,622	66,421	52,399	38,840	500,277
2009	29,278	40,617	49,567	43,337	30,037	31,749	30,432	44,174	42,771	72,522	54,423	41,049	509,956
2010	33,645	49,264	63,058	45,509	32,542	33,263	38,991	54,672	54,848	79,130	67,537	50,408	602,867
2011	42,622	56,339	67,565	59,751	46,202	46,115	42,661	71,398	63,033	96,996	83,460	60,073	736,215
2012	52,501	66,459	89,151	69,796	50,317	53,630	49,995	71,964	66,383	86,379	83,173	63,344	803,092
2013	47,846	67,264	88,697	65,152	52,834	54,599	54,011	68,478	66,755	99,426	75,485	57,069	797,616
2014	70196	69009	79914	80053	62558	50731	46546	59761	52894	80993	76305	61158	790,118
2015	38,616	58,523	79,187	65,729	17,569	18,368	22,967	38,606	39,050	56,584	58,304	45,467	538,970
2016	42,235	60,821	76,444	60,214	46,683	38,852	48,115	66,341	74,670	89,281	72,990	76,356	753002
2017	62,632	84,061	106,291	88,591	62,773	55,956	42,240	73,778	68,634	112,492	99,804	82,966	940218
2018	73,187	89,507	124,686	98,650	68,825	65,159	73,281	87,679	91,874	130,745	147,859	121,620	1,173,072
2019	81,273	102,423	127,351	109,399	78,329	74,883	70,916	94,749	92,604	134,096	130,302	100,866	1,197,191
Changes*	11	14	2	11	14	15	-3	8	1	3	-12	-17	2

* Figures in parenthesis represent percentage change over 2018

CHART 2.2: TOURIST ARRIVAL BY MONTH, 2015-2019

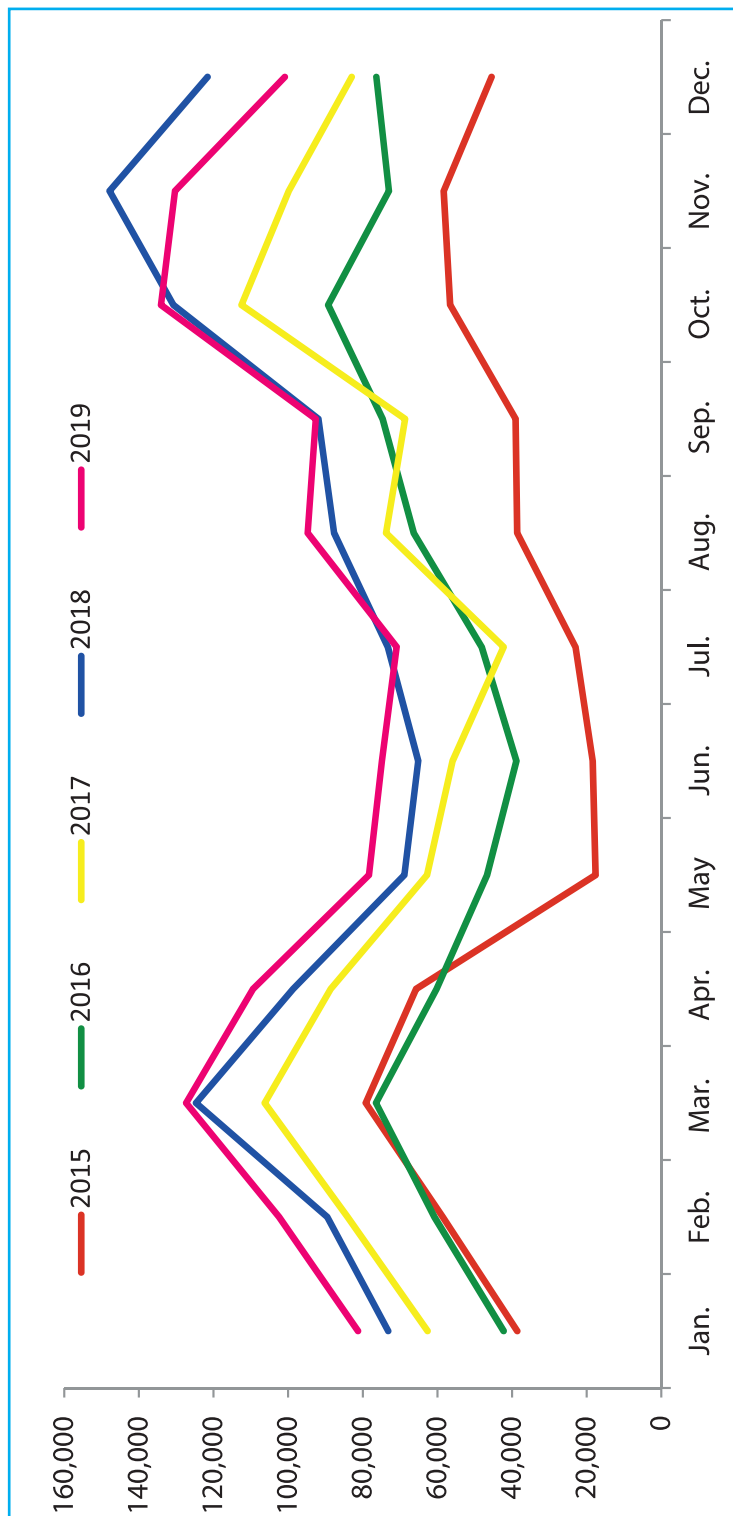


CHART 2.3: TOURIST ARRIVAL BY SEASONS, 2015-2019

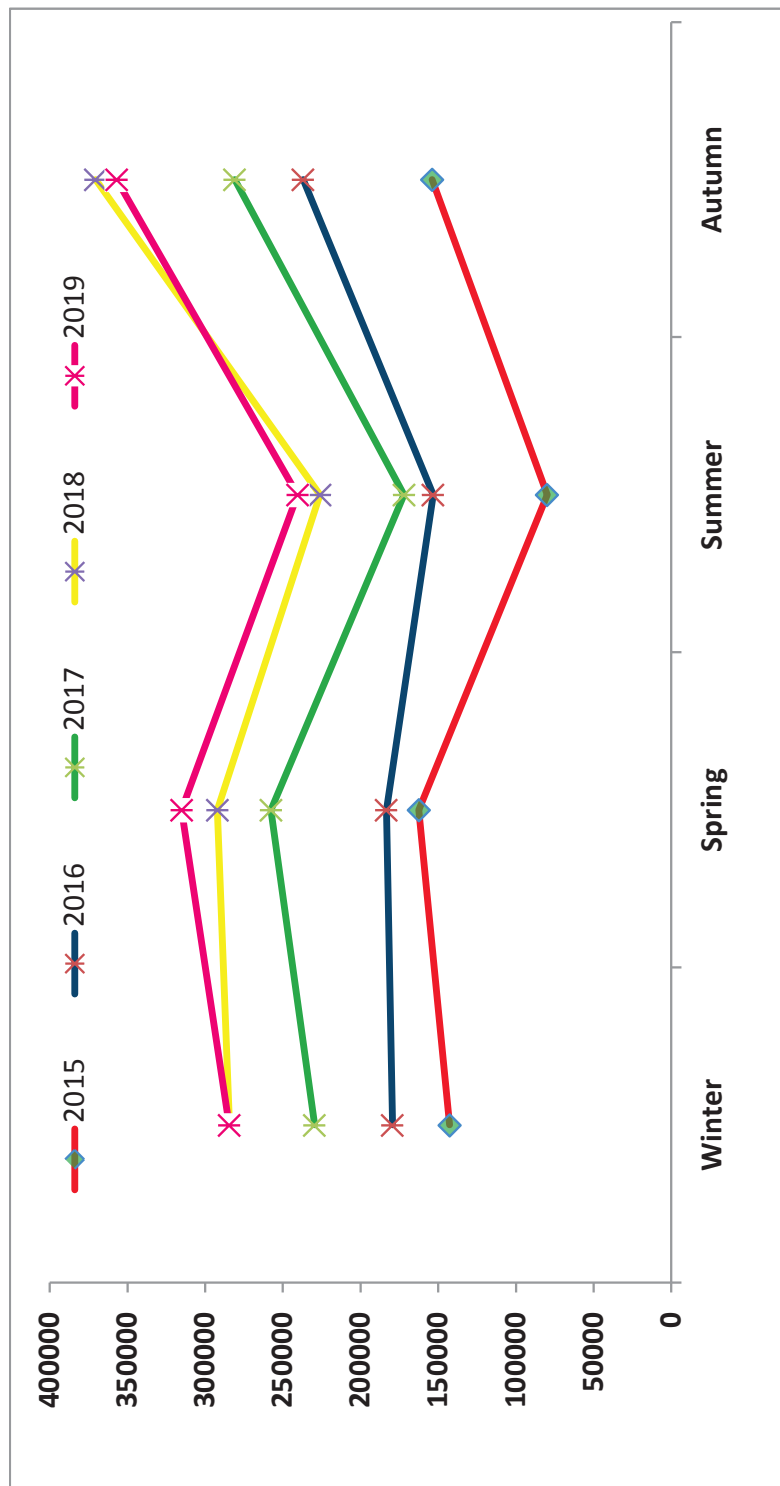


TABLE 2.3: TOURIST ARRIVAL BY MONTH, 1992-2019(Excluding Indian citizens)

Year	Jan	Feb	Mar	Apr	May	Jun	July	Aug	Sep	Oct	Nov	Dec	Total
1992	12,560	20,331	24,792	20,295	11,380	7,264	12,708	20,198	18,442	33,834	25,862	20,113	227,779
1993	14,147	18,164	25,200	14,594	9,355	8,536	9,076	16,671	18,293	34,415	23,715	18,039	210,205
1994	14,795	19,794	24,856	19,778	12,244	8,561	13,352	20,524	21,289	30,063	20,556	18,179	223,991
1995	15,758	19,482	25,381	23,419	12,491	9,270	14,141	20,211	22,344	38,398	28,177	17,063	246,135
1996	17,678	23,629	31,738	25,458	14,042	9,777	13,724	21,833	23,201	38,139	29,221	22,661	271,101
1997	16,856	24,151	33,389	24,343	14,836	9,973	16,024	24,772	24,344	46,110	30,712	22,909	288,419
1998	20,124	27,855	33,097	28,997	15,647	11,195	15,724	26,387	29,241	49,787	38,587	23,814	320,455
1999	20,554	29,259	38,158	29,637	22,305	12,731	16,782	29,402	33,650	54,099	38,835	25,431	350,843
2000	21,092	33,939	38,959	36,430	18,658	12,036	16,842	27,205	34,643	51,100	45,318	31,509	367,731
2001	25,158	32,763	40,684	32,211	17,406	8,929	13,965	21,658	26,132	37,198	25,795	15,018	296,917
2002	13,180	16,960	25,102	16,877	11,751	8,338	9,962	15,515	18,768	30,251	24,044	17,943	208,691
2003	15,659	19,321	22,260	20,303	15,288	7,835	13,607	19,149	22,577	38,040	31,750	25,980	251,769
2004	22,947	28,743	35,468	26,279	15,581	9,776	17,070	27,657	21,829	38,104	29,330	22,187	294,971
2005	19,531	17,061	25,847	18,311	15,438	11,170	14,921	26,119	27,413	40,553	34,778	27,822	278,964

TABLE 2.3: TOURIST ARRIVAL BY MONTH, 1992-2019 (Excluding Indian citizens) (contd.)

Year	Jan	Feb	Mar	Apr	May	Jun	July	Aug	Sep	Oct	Nov	Dec	Total
2006	21,126	21,320	30,169	18,435	13,517	11,841	15,066	24,966	26,327	43,026	37,402	27,009	290,204
2007	25,857	33,133	48,022	32,794	23,296	18,937	26,160	37,658	38,813	65,745	46,822	33,458	430,695
2008	30,473	40,334	51,364	31,952	19,619	12,922	18,097	32,084	33,870	60,938	47,467	29,980	409,100
2009	23,969	34,594	45,950	34,938	20,362	17,078	19,942	36,121	36,241	65,592	48,667	32,618	416,072
2010	28,076	43,289	56,632	37,208	21,053	17,967	24,273	43,172	44,650	69,982	57,304	38,363	481,969
2011	34,541	48,045	58,455	49,089	29,692	25,081	28,875	55,204	50,560	86,988	72,436	47,745	586,711
2012	42,055	55,301	72,882	53,745	30,140	30,084	34,837	57,590	54,654	79,536	74,603	51,850	637,277
2013	40,296	58,195	73,434	53,079	33,295	28,507	37,666	57,642	51,912	77,163	59,630	45,822	616,642
2014	57,062	58,874	70,008	67,165	41,979	30,024	37,567	51,828	45,807	72,964	69,143	52,354	654,775
2015	32,633	51,251	71,573	56,214	13,746	13,174	17,901	31,571	32,351	51,683	52,542	39,207	463,846
2016	36,563	54,272	68,595	50,831	34,332	26,432	37,497	54,924	64,143	81,706	62,304	63,154	634,753
2017	52,085	72,865	93,562	73,996	42,762	35,838	32,047	59,721	60,283	101,824	87,890	67,077	779,950
2018	61,035	81,937	110,275	82,038	47,097	44,260	54,896	69,384	76,520	119,098	132,116	100,093	978,749
2019	63,581	84,755	109,095	92,293	52,314	44,369	48,796	67,196	74,102	118,486	110,622	77,432	943,041
changes*	4.2	3.5	-1.1	12.5	11.1	0.2	-11.1	-3.2	-3.2	-0.5	-16.3	-22.6	-3.6

Source: Department of Immigration

*Figures in parenthesis represent percentage change over 2018

TABLE 2.4: INDIAN TOURIST ARRIVAL BY MONTH, BY AIR, 1992-2019

Year	Jan.	Feb.	Mar.	Apr.	May	Jun.	July	Aug.	Sep.	Oct.	Nov.	Dec.	Total
1992	4,891	7,158	6,713	10,387	17,709	15,205	8,234	7,140	6,397	8,813	6,479	7,448	106,574
1993	5,091	5,767	5,618	5,527	11,230	11,066	4,512	4,912	5,646	7,827	6,663	9,503	83,362
1994	6,940	5,078	6,730	7,514	13,988	14,346	6,387	7,086	6,670	9,330	7,452	11,019	102,540
1995	6,449	8,758	8,838	10,575	15,352	16,380	9,839	7,475	8,225	8,447	7,605	9,317	117,260
1996	10,208	6,047	7,598	10,873	15,686	16,972	8,960	7,247	8,980	9,175	8,429	12,337	122,512
1997	8,729	8,710	9,788	10,886	18,620	16,394	10,067	10,777	7,637	10,162	9,461	12,207	133,438
1998	8,698	10,101	8,241	12,090	20,167	17,986	12,171	9,787	10,423	12,700	8,816	12,049	143,229
1999	9,198	8,875	8,060	11,137	20,407	18,318	10,411	9,047	10,467	12,444	10,030	12,267	140,661
2000	4,215	5,020	5,985	7,205	9,705	14,897	7,638	7,465	8,880	8,095	7,675	9,135	95,915
2001	5,296	5,917	6,025	6,872	10,939	4,101	4,364	3,664	5,038	4,047	4,487	3,570	64,320
2002	3,996	3,708	3,713	4,376	8,136	8,880	6,659	5,578	4,984	5,021	4,679	7,047	66,777
2003	5,556	5,028	5,477	5,548	7,416	12,516	9,054	8,419	6,147	7,419	6,648	7,135	86,363
2004	8,041	6,888	8,822	7,235	11,221	10,017	7,790	5,505	3,667	5,269	7,051	8,820	90,326
2005	5,946	3,277	4,028	5,103	10,103	11,438	9,075	10,791	8,653	10,945	6,727	10,348	96,434
2006	7,643	4,408	6,704	3,548	9,353	14,369	10,117	8,184	7,035	6,644	6,717	9,000	93,722
2007	7,335	6,801	6,700	8,148	12,558	12,379	9,277	7,025	6,739	4,899	5,451	8,698	96,010
2008	6,440	6,341	7,371	6,523	10,791	11,427	7,330	7,927	7,752	5,483	4,932	8,860	91,177
2009	5,309	6,023	3,617	8,399	9,675	14,671	10,490	8,053	6,530	6,930	5,756	8,431	93,884

Year	Jan.	Feb.	Mar.	Apr.	May	Jun.	July	Aug.	Sep.	Oct.	Nov.	Dec.	Total
2010	5,569	5,975	6,426	8,301	11,489	15,296	14,718	11,500	10,198	9,148	10,233	12,045	120,898
2011	8,081	8,294	9,110	10,662	16,510	21,034	13,786	16,194	12,473	10,008	11,024	12,328	149,504
2012	10,446	11,158	16,269	16,051	20,177	23,546	15,158	14,374	11,729	6,843	8,570	11,494	165,815
2013	7,550	9,069	15,263	12,073	19,539	26,092	16,345	10,836	14,843	22,263	15,855	11,247	180,974
2014	13,134	10,135	9,906	12,888	20,579	20,707	8,979	7,933	7,087	8,029	7,162	8,804	135,343
2015	5983	7272	7614	9515	3823	5194	5066	7035	6699	4901	5762	6260	75124
2016	5672	6549	7849	9383	12351	12420	10618	11417	10,527	7,575	10,686	13,202	118249
2017	10547	11196	12729	14595	20011	20118	10193	14057	8351	10668	11914	15889	160268
2018	12152	7570	14411	16612	21728	20899	18385	18295	15354	11647	15743	21527	194323
2019	17692	17668	18256	17106	26015	30514	22120	27553	18502	15610	19680	23434	254150
%Changes*	46	133	27	3	20	46	20	51	21	34	25	9	31

*Figures in parenthesis represent percentage change over 2018. Source: Department of Immigration

TABLE 2.5: TOURIST ARRIVAL BY YEAR, 1993-2019

Year	Third Country	Indian	Total	% Change
1993	210205	83362	293567	-12.2
1994	223991	102540	326531	11.2
1995	246135	117260	363395	11.3
1996	271101	122512	393613	8.3
1997	288419	133438	421857	7.2
1998	320455	143229	463684	9.9
1999	350843	140661	491504	6.0
2000	367731	95915	463646	-5.7
2001	296917	64320	361237	-22.1
2002	208691	66777	275468	-23.7
2003	251769	86363	338132	22.7
2004	294971	90326	385297	13.9
2005	278964	96434	375398	-2.6
2006	290204	93722	383926	2.3
2007	430695	96010	526705	37.2
2008	409100	91177	500277	-5.0
2009	416072	93884	509956	1.9
2010	481969	120898	602867	18.2
2011	586711	149504	736215	22.1
2012	637277	165815	803092	9.1
2013	616642	180974	797616	-0.7
2014	654775	135343	790118	-0.9
2015	464156	74814	538970	-31
2016	634,753	118,249	753,002	40
2017	779386	160832	940,218	25
2018	978749	194323	1,17,3072	25
2019	943041	254150	1,197,191	2

Source: Department of Immigration

CHART: 2.3 TOURIST ARRIVALS BY COUNTRY, 2010-2019

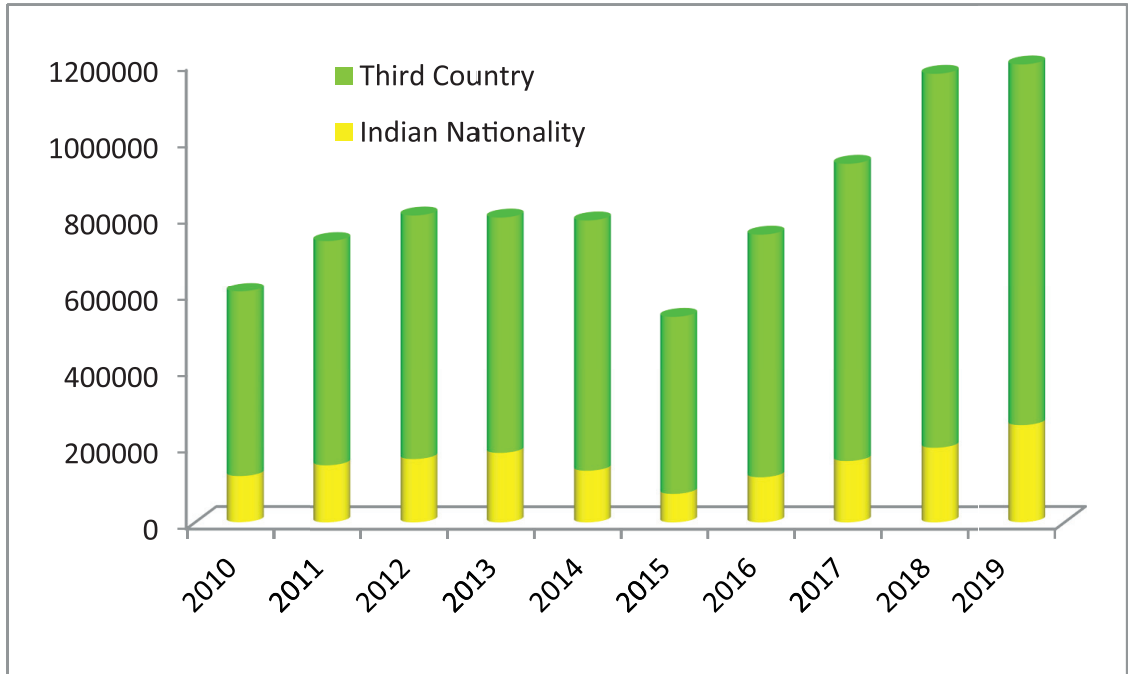


TABLE 2.6: TOURIST ARRIVAL BY SEX, 1993-2019

Year	Sex				Total
	Male	%	Female	%	
1993	179,178	61.0	114,389	39.0	293,567
1994	205,389	62.9	121,142	37.1	326,531
1995	224,769	61.9	138,626	38.1	363,395
1996	233,055	59.2	160,558	40.8	393,613
1997	251,358	59.6	170,499	40.4	421,857
1998	267,871	57.8	195,813	42.2	463,684
1999	286,161	58.2	205,343	41.8	491,504
2000	266,937	57.6	196,709	42.4	463,646
2001	213465	59.1	147772	40.9	361,237
2002	174,710	63.4	100,758	36.6	275,468
2003	204,732	60.5	133,400	39.5	338,132
2004	255,303	66.3	129,994	33.7	385297
2005	257,972	68.7	117,426	31.3	375,398
2006	218,818	57.0	165,108	43.0	383,926
2007	290,688	55.2	236,017	44.8	526,705
2008	286,983	57.4	213,294	42.6	500,277
2009	288,155	56.5	221,801	43.5	509,956
2010	361,611	60.0	241,256	40.0	602,867
2011	352,059	47.8	384,156	52.2	736,215
2012	439,270	54.7	363,822	45.3	803,092
2013	449,058	56.3	348,558	43.7	797,616
2014	445,627	56.4	344,491	43.6	790,118
2015	289,158	53.7	249,813	46.4	538,970
2016	399,091	53.0	353,911	47.0	753,002
2017	509,585	54.2	430,633	45.8	940,218
2018	624,928	53.3	548,144	47.7	1,173,072
2019	634,392	53.0	562,799	47.0	1,197,191

Source: Department of Immigration

CHART 2.4: TOURIST ARRIVAL BY SEX, 2010-2019

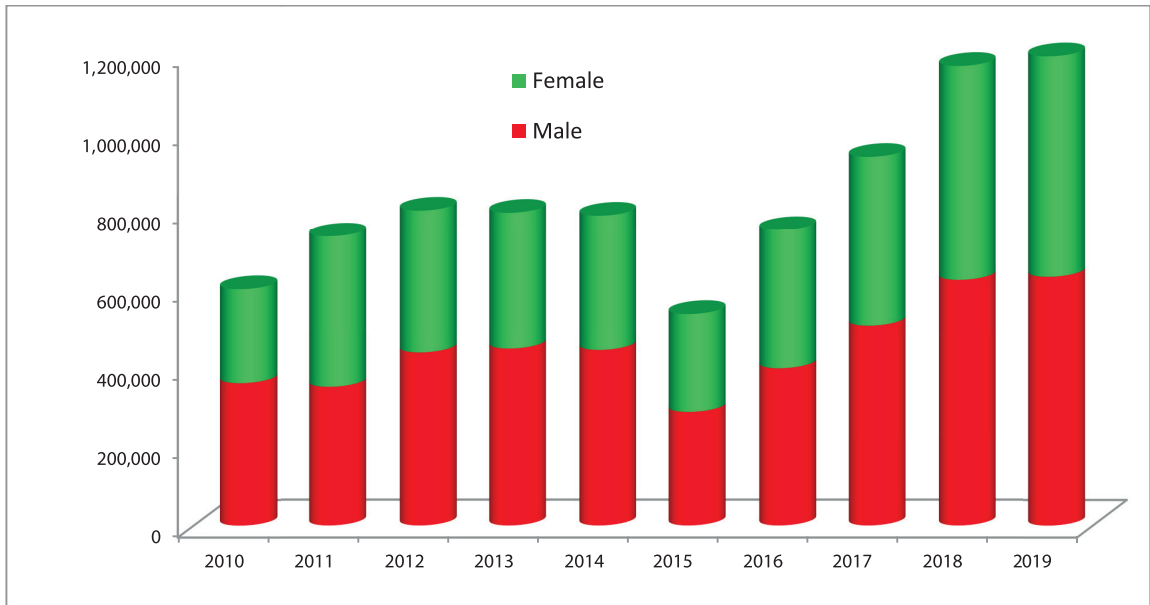


TABLE 2.7: TOURIST ARRIVAL BY AGE GROUPS, 1993-2019

Year	Total	Age Groups					Not Sp.
		0-15	16-30	31-45	46-60	60+	
1993	293,567	15,289	91,947	96,665	59,768	29,898	NA
	(100)	(5.2)	(31.3)	(32.9)	(20.4)	(10.2)	NA
1994	326,531	20,097	96,016	106,260	66,174	37,984	NA
	(100)	(6.2)	(29.4)	(32.5)	(20.3)	(11.6)	NA
1995	363,395	22,878	106,603	120,212	76,647	37,055	NA
	(100)	(6.3)	(29.3)	(33.1)	(21.1)	(10.2)	NA
1996	393,613	22,185	94,924	116,307	89,751	70,446	NA
	(100)	(5.6)	(24.1)	(29.5)	(22.8)	(17.9)	NA
1997	421,857	23,840	121,286	126,828	107,111	42,792	NA
	(100)	(5.7)	(28.8)	(30.1)	(25.4)	(10.1)	NA
1998	463,684	26,763	122,103	151,846	121,190	41,782	NA
	(100)	(5.8)	(26.3)	(32.7)	(26.1)	(9.0)	NA
1999	491,504	30,967	150,307	155,985	113,314	40,913	NA
	(100)	(6.3)	(30.6)	(31.7)	(23.1)	(8.3)	NA
2000	463,646	19,136	119,816	148,063	125,140	51,491	NA
	(100)	(4.1)	(25.8)	(31.9)	(27.0)	(11.1)	NA
2001	361,237	14608	95801	115678	93621	41529	NA
	(100)	(4.0)	(26.5)	(32.0)	(25.9)	(11.5)	NA
2002	275,468	12425	67774	99622	67017	28630	NA
	(100)	(4.5)	(24.6)	(36.2)	(24.3)	(10.4)	NA
2003	338,132	16056	78,357	99,740	85,753	58,226	NA
	(100)	(4.7)	(23.2)	(29.5)	(25.4)	(17.2)	NA
2004	385297	38,734	84125	128,267	96,920	37,251	NA
	(100)	(10.1)	(21.8)	(33.3)	(25.2)	(9.7)	NA
2005	375,398	30,429	57,115	114,103	106,077	67,674	NA
	(100)	(8.1)	(15.2)	(30.4)	(28.3)	(18.0)	NA
2006	383,926	37,433	75,626	123,541	95,260	52,066	NA
	(100)	(9.8)	(19.7)	(32.2)	(24.8)	(13.6)	NA

Year	Total	Age Groups					Not Sp.
		0-15	16-30	31-45	46-60	60+	
2007	526,705	38,870	112,879	164,488	130,756	69,927	9,785
	(100)	(7.4)	(21.4)	(31.2)	(24.8)	(13.3)	(1.9)
2008	500,277	42,581	106,596	150,171	121,387	60,531	19,011
	(100.0)	(8.5)	(21.3)	(30.0)	(24.3)	(12.1)	(3.8)
2009	509,956	84,891	140,805	141,955	99,197	39,638	3,470
	100.0	(16.6)	(27.6)	(27.8)	(19.5)	(7.8)	(0.7)
2010	602,867	41,156	120,395	189,852	172,800	64,593	14,071
	100.0	(6.8)	(20.0)	(31.5)	(28.7)	(10.7)	(2.3)
2011	736,215	32,795	171,081	212,176	177,983	82,726	59,454
	(100.0)	(4.5)	(23.2)	(28.8)	(24.2)	(11.2)	(8.1)
2012	803,092	35,468	181,558	231,117	201,835	109,239	43,875
	(100.0)	(4.4)	(22.6)	(28.8)	(25.1)	(13.6)	(5.5)
2013	797,616	46262	190630	237690	195416	115654	11964
	(100.0)	(5.9)	(24.1)	(30.1)	(24.7)	(14.6)	(1.5)
2014	790,118	50441	185685	235738	183582	106666	28007
	(100.0)	(6.4)	(23.5)	(29.8)	(23.2)	(13.5)	(3.5)
2015	538970	19614	123444	157416	129614	74518	34365
	(100.0)	(3.6)	(22.9)	(29.2)	(24.0)	(13.8)	(6.4)
2016	753002	29825	154960	218479	199139	130627	19972
	(100.0)	(4.0)	(20.6)	(29.0)	(26.4)	(17.3)	(2.7)
2017	940218	35332	217143	292827	244342	141316	9258
	(100.0)	(3.8)	(23.1)	(31.1)	(26.0)	(15.0)	(1.0)
2018	1173072	54870	269648	360237	303452	173299	11566
	(100.0)	(4.7)	(23.0)	(30.7)	(25.9)	(14.8)	(1.0)
2019	1197191	57523	254399	383155	305651	176872	19591
	(100.0)	(4.8)	(21.2)	(32.0)	(25.5)	(14.8)	(1.6)

Figures in parenthesis represent percentage of the total.

CHART 2.5: TOURIST ARRIVALS BY AGE GROUP, 2015-2019

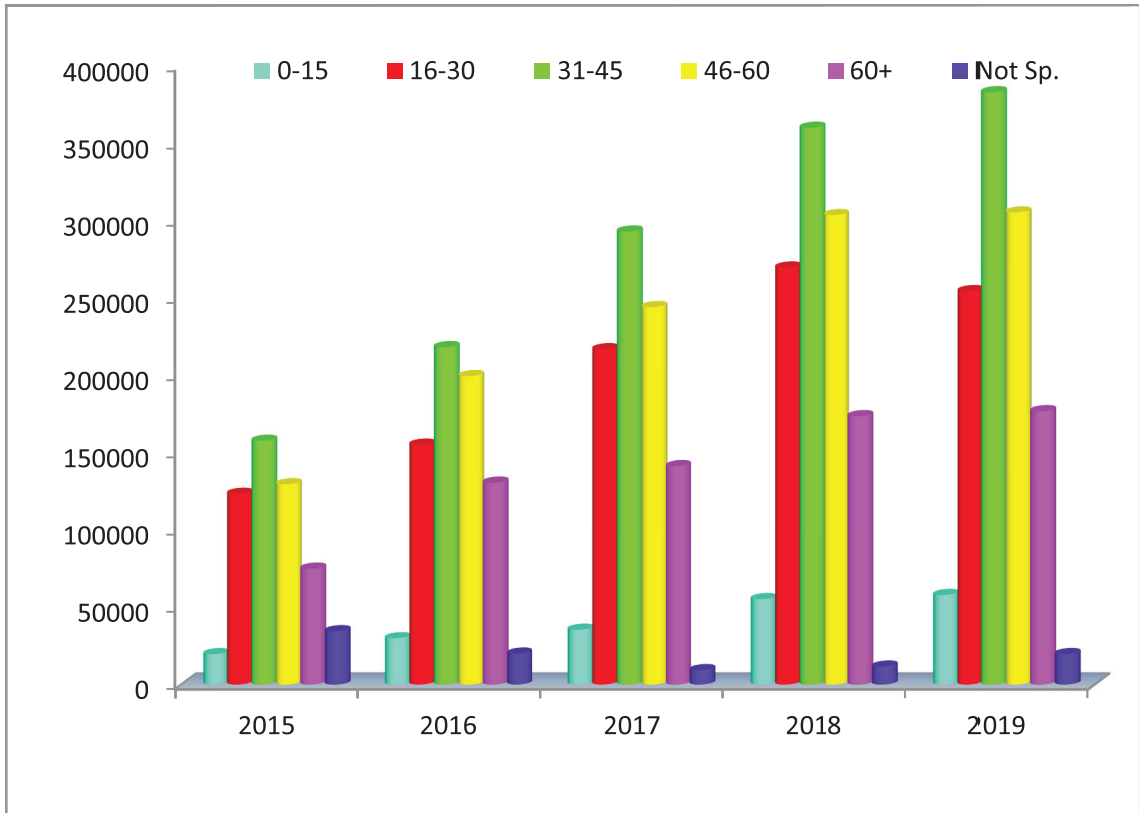


TABLE 2.8: TOURIST ARRIVAL BY MAJOR NATIONALITIES, 2010-2019

Nationality	2010	2011	2012	2013	2014	2015	2016	2017	2018	2019
Australia	16,243	19,824	22,030	20469	24516	14816	25507	33371	38429	38972
%	2.7	2.7	2.7	3.5	3.1	2.7	3.39	3.55	3.28	3.3
Bangladesh				22410	21851	14831	23440	29060	26355	25849
%							3.11	3.09	2.25	2.2
Canada	9,322	11,404	13,507	12132	11610	6495	12491	15105	17317	17102
%	1.5	1.5	1.7	1.7	1.5	1.2	1.67	1.6	1.48	1.4
China	46,360	61,917	71,861	113173	123805	64675	104005	104664	153633	169543
%	7.7	8.4	8.9	12.4	15.7	12	13.81	11.1	13.1	14.2
France	24,550	26,720	28,805	21842	24097	10885	20863	26140	31810	30646
%	4.1	3.6	3.6	3.5	3	2	2.27	2.8	2.71	2.6
Germany	22,583	27,472	30,409	22263	18028	12216	23812	29918	36879	36641
%	3.7	3.7	3.8	3.5	2.3	2.3	3.16	3.2	3.17	3.1
India	120,898	149,504	165,815	180974	135343	75124	118249	160832	194323	254150
%	20.1	20.3	20.6	23.2	17.1	13.9	15.7	17.1	16.57	21.2
Italy	10,226	12,621	14,614	9974	10347	3972	9911	11840	15342	15676
%	1.7	1.7	1.8	1.2	1.3	0.7	1.32	1.3	1.31	1.3
Japan	23,332	26,283	28,642	26694	25829	14465	22979	27326	29817	30534
%	3.9	3.6	3.6	3.3	3.3	2.7	3.05	2.9	2.54	2.6

TABLE 2.8: TOURIST ARRIVAL BY MAJOR NATIONALITIES, 2010-2019 (contd.)

Nationality	2010	2011	2012	2013	2014	2015	2016	2017	2018	2019
South Korea				19714	23205	18112	25171	34301	37218	29680
%							3.34	3.6	3.17	2.5
Malaysia									22833	21329
%									1.95	1.8
Myanmar							25796	30852	41402	36274
%							3.42	3.3	3.53	3.0
Netherlands	13,471	16,836	15,445	10516	12320	4324	11453	13393	15353	15032
%	2.2	2.3	1.9	1.3	1.6	0.8	1.52	1.4	1.31	1.3
Spain	13,712	16,037	14,549	10412	13110	4307	12255	15953	20214	19057
%	2.3	2.2	1.8	1.3	1.7	0.8	1.63	1.7	1.72	1.6
Sri Lanka	45,531	59,884	69,476	32736	37546	43117	57521	45361	69640	55869
%	7.6	8.1	8.7	4.1	4.8	8	7.64	4.8	5.94	4.7
Thailand				40969	33422	32338	26722	39154	52429	41653
%				5.1	4.2	6	3.55	4.2	4.47	3.5
U.S.A.	36,425	42,875	48,985	47355	49830	53897	53645	79146	91895	93218
%	6	5.8	6.1	5.9	6.3	10	7.12	8.4	7.83	7.8
U.K.	35,091	39,091	41,294	35668	36759	204469	46295	51058	63466	61144
%	5.8	5.3	5.1	4.5	4.7	3.8	6.15	5.4	5.41	5.1
Others	168,590	179,158	214,638	78821	218639	171688	119245	174460		204822
%	28.4	26.9	27.2	23.5	27.7	31.9	15.84	18.6		17.1
Total	602,867	736,215	803,092	797,616	790,118	538,970	753,002	940,218	1173072	1197191

TABLE 2.9: TOURIST ARRIVAL BY MAJOR NATIONALITIES & MONTH, 2017-2019

Nationality	Year	Month												Total
		Jan.	Feb.	Mar.	Apr.	May	Jun.	Jul.	Aug.	Sep.	Oct.	Nov.	Dec.	
Australia	2017	2735	2386	3141	3707	1692	1532	814	1,007	4,141	4,297	4,582	3,337	33,371
	2018	2689	2537	3605	3805	1903	1619	1718	1406	3746	5826	5140	4435	38429
	2019	3,251	2,753	3,275	4,521	2,048	1,731	1,442	1,407	4,454	5,671	4,970	3,449	38,972
Bangladesh	2017	2028	2124	2901	2758	2349	3	1549	2,251	3,683	2,418	2,784	4,212	29,060
	2018	2743	3236	2946	2028	1191	1850	1407	2311	1854	1843	2125	2821	26355
	2019	1284	1641	2,072	1,840	1037	2270	1588	2565	1,979	2,786	2,963	3824	25,849
Canada	2017	911	1305	1784	1693	1117	667	531	670	1,245	2,333	1,714	1,135	15,105
	2018	955	1511	2086	1827	1174	805	921	775	1222	2700	2134	1207	17317
	2019	1134	1426	2196	1928	1265	729	853	693	1370	2643	1909	956	17102
China	2017	9727	9499	10458	8601	7309	6490	5823	7,349	8,351	9,735	10,312	11,010	104,664
	2018	12027	15394	13558	12554	9148	8696	13122	12048	12934	13538	14862	15752	153633
	2019	12916	15,345	17,398	13,778	12359	10215	12,450	12,817	13,195	14,896	17,499	16,675	169,543
France	2017	942	1566	2697	3451	1203	852	1025	1,073	1,991	6,332	3,695	1,313	26,140
	2018	1160	1863	3260	4453	1525	736	1620	1349	2362	7552	4340	1590	31810
	2019	1225	1,814	3,534	4,343	1,601	784	1300	1,420	2,191	6,826	4,508	1,100	30,646

TABLE 2.9: TOURIST ARRIVAL BY NATIONALITIES & MONTH, 2017-2019 (contd.)

Nationality	Year	Month												Total
		Jan.	Feb.	Mar.	Apr.	May	Jun.	Jul.	Aug.	Sep.	Oct.	Nov.	Dec.	
Germany	2017	1014	2243	4192	3891	1380	779	711	1,192	2,883	6,548	3,869	1,216	29,918
	2018	1301	2617	6122	3428	2055	993	1094	1572	3775	7523	4613	1786	36879
	2019	1,480	3,113	5,589	4,927	1,808	835	988	1,361	3,456	7,494	4,208	1,382	36,641
India	2017	10547	11196	12729	14595	20011	20118	10193	14,057	8,915	10,668	11,914	15,889	160,832
	2018	12152	7570	14411	16612	21385	21623	16888	18327	15396	11566	16167	22226	194323
	2019	17690	17659	18256	17128	26021	30513	22117	27555	18497	15612	19679	23423	254,150
Italy	2017	511	694	821	1308	682	431	509	1,634	824	2,012	1,389	1,025	11,840
	2018	707	912	1237	1333	683	447	967	2193	1116	2376	1787	1584	15342
	2019	660	931	1483	2050	784	504	569	2123	903	2375	1868	1426	17695
Japan	2017	2027	2935	3586	2252	1329	955	944	1,857	1,992	2,969	3,719	2,761	27,326
	2018	2135	2761	4281	2393	1312	973	1284	1925	2170	2895	4182	3506	29817
	2019	2728	2871	3,692	2960	1690	1111	1297	2,254	2,351	2,599	3,701	3,280	30534
Malaysia	2017	1121	1333	1858	1833	1169	988	820	1,069	1,125	1,918	2,595	2,455	18,284
	2018	981	1487	2213	2154	1166	1234	1138	1380	1967	2483	3394	3236	22833
	2019	990	1,630	2,160	2,068	1468	1232	835	1458	1823	2,144	2,868	2,653	21329

TABLE 2.9: TOURIST ARRIVAL BY NATIONALITIES & MONTH, 2017-2019 (contd.)

Nationality	Year	Month												Total
		Jan.	Feb.	Mar.	Apr.	May	Jun.	Jul.	Aug.	Sep.	Oct.	Nov.	Dec.	
Myanmar	2017	2748	5285	0	2483	122	51	63	9,674	167	2,457	3,856	3,946	30,852
	2018	3703	5353	6251	2783	106	84	107	138	109	2523	10246	9999	41402
	2019	3827	5676	7290	2,776	132	95	97	74	188	3,859	6,530	5730	36274
Netherlands	2017	577	1100	1498	1732	655	388	866	826	1,025	2,411	1,504	811	13,393
	2018	589	1188	1650	1792	801	447	961	778	1184	2793	1929	1240	15352
	2019	603	1252	1844	1813	796	375	1028	812	1304	2756	1604	847	15034
South Korea	2017	4579	3585	2810	2436	1746	1867	1981	2,321	2,195	3,348	3,556	3,877	34,301
	2018	6075	2607	4021	2597	1554	1279	2415	1874	2397	3850	4532	4017	37218
	2019	5089	2723	3297	2279	1514	1210	2,067	1,914	2,013	3,035	2,929	3038	31108
Spain	2017	478	748	913	1397	706	607	1590	2,938	1,730	2,397	1,578	871	15,953
	2018	555	728	1625	1109	964	745	2245	3505	2296	3313	2080	1049	20214
	2019	679	669	1,135	2311	1119	823	1,482	3,331	1,945	2,972	2,091	826	19383
Sri Lanka	2017	329	7069	10434	1070	404	301	949	9,674	5,605	5,291	3,475	760	45,361
	2018	341	5841	10630	379	359	365	1457	16876	8815	6563	16562	1452	69640
	2019	655	7,835	10,835	1,531	253	355	1079	14486	6962	5,851	5539	935	56,316

TABLE 2.9: TOURIST ARRIVAL BY NATIONALITIES & MONTH, 2017-2019 (contd.)

Nationality	Year	Month												Total
		Jan.	Feb.	Mar.	Apr.	May	Jun.	Jul.	Aug.	Sep.	Oct.	Nov.	Dec.	
Thailand	2017	3981	8388	6455	2206	562	345	270	477	696	4,825	5,144	5,805	39,154
	2018	4989	6841	6860	1791	902	1058	872	905	1086	3646	10134	13345	52429
	2019	4616	7725	6112	2962	937	728	823	717	881	3705	6267	6187	41660
UK	2017	3395	4363	6,434	6,558	3,052	2,593	3093	2,973		7,883	6,802	3,912	51,058
	2018	3250	4884	7822	6102	3184	2679	5226	3644	4528	9438	7698	5011	63466
	2019	3,874	5,031	6,702	7,192	3,387	2,786	4,140	3,387	4,736	8,716	7193	4,000	61,144
USA	2017	5626	5847	8294	7578	6499	6317	3874	4,024	7,123	10,022	8,446	5,496	79,146
	2018	5499	6807	9083	8094	6961	7284	6955	4628	6519	12539	9804	7722	91895
	2019	6,620	6,684	9,450	8,493	7,550	7,968	6,325	4,966	7,062	12,241	9,635	6,247	93,241
Others	2017	7495	10646	22219	17499	9614	9653	5664	7642	13613	22868	17168	10942	155023
	2019	11336	15370	23025	23416	12452	12242	12884	12045	18398	27778	26130	19642	212378
	2019	11,952	15,645	21,031	24,499	12,560	10,619	10,436	11,409	17,294	27,915	24,341	14,888	200,570
Grand-Total	2017	62,632	84,061	106,291	88,591	62,773	55,956	42,240	73,778	68,634	112,492	99,804	82,966	940,218
	2018	73187	89507	124686	98650	68825	65159	73281	87679	91874	130745	147859	121620	1173072
	2019	81273	102423	127351	109399	78329	74883	70916	94749	92604	134096	130302	100866	1197191

Source: Department of Immigration

TABLE 2.10: TOURIST ARRIVAL BY ENTRY POINTS (LAND), 2019

Entry point/ Month	Jan	Feb	Mar	Apr	May	Jun	Jul	Aug	Sep	Oct	Nov	Dec	Total
Kakarvitta, Jhapa	821	559	829	846	590	562	541	513	501	803	882	1033	8480
Birgunj, Parsa	210	136	146	111	61	32	37	58	54	91	112	144	1192
Bhairahawa, Rupendehi	12446	25427	28772	7336	1524	1114	2183	15453	8855	17109	24796	16381	161396
Nepalgunj, Banke	61	46	60	52	18	19	31	22	12	57	30	34	442
Dhangadhi, Kailali	33	17	12	3	5	4	6	2	1	5	12	8	108
Gaddachauki, Kanchanpur	154	166	324	470	282	193	147	175	246	324	257	238	2976
Timure, Rasuwa	834	438	680	1474	3693	5345	3878	4712	1973	1891	1186	609	26713
Total	14559	26789	30823	10292	6173	7269	6823	20935	11642	20280	27275	18447	201307

Source: Department of Immigration

TABLE 2.11: TOURIST ARRIVAL BY COUNTRY AND MONTH (LAND), 2019

S.N.	Country	Jan.	Feb.	Mar.	Apr.	May	Jun	Jly	aug	Sept	Oct.	Nov	Dec	Total
1	AUSTRALIA	268	190	199	150	95	78	146	91	125	221	176	155	1869
2	BANGLADESH	97	88	137	133	105	247	140	266	203	313	258	353	2341
3	CHINA	1486	1184	1622	1511	2039	1246	1637	1427	909	1573	2188	1521	18281
4	FRANCE	146	176	224	209	127	90	97	159	109	222	190	50	1718
5	GERMAN	98	218	330	248	188	100	93	122	228	463	306	102	2447
6	INDIA	27	44	45	65	1273	3465	1300	2405	610	91	69	77	9519
7	INDONESIA	79	170	107	25	9	84	109	25	66	80	489	256	1478
8	JAPAN	169	462	185	106	117	57	32	84	78	178	145	233	1846
9	KOREA DPR	0	547	0	0	0	1	36	0	3	4	8	0	2033
10	KOREA, REPUBLIC OF	1508	18	793	171	131	32	90	81	169	630	584	641	3407
11	MYANMAR	3751	5562	7160	2633	64	10	40	25	38	3773	6413	5602	35071
12	NETHERLANDS	114	190	241	154	114	42	165	226	163	300	217	87	1997
13	SRI LANKA	424	7574	10586	1208	51	106	901	14234	6585	5552	4492	489	52198
14	TAIWAN	350	470	311	87	6	112	41	34	60	344	393	357	2558
15	THAILAND	4107	6853	5179	908	365	340	390	279	344	2449	5379	4889	31473
16	UNITED KINGDOM	161	196	326	311	157	166	128	160	167	275	249	120	2355
17	USA	379	458	633	310	284	336	532	198	278	515	662	436	4955
18	VIETNAM	195	1116	933	224	44	51	110	31	590	1607	2006	1074	7974
19	Other	1200	1273	1812	1839	1004	706	836	1088	917	1690	3051	2005	17787
Total		14559	26789	30823	10292	6173	7269	6823	20935	11642	20280	27275	18447	201307



Average length of stay slightly increased in year 2019 in comparison to year 2018. In year 2019 average length of stay was 12.4: almost 2.2% increased in year 2019 and reached 12.7 days. Analysis of length of stay is based on 720,280 tourists' data.

PART
III

LENGTH OF STAY

TABLE 3.1: TOURIST ARRIVAL AND AVERAGE LENGTH OF STAY, 1975-2019

Year	Number	Average Length of Stay	Year	Number	Average Length of Stay
1975	92,440	13.05	1997	421,857	10.49
1976	105,108	12.41	1998	463,684	10.76
1977	129,329	11.60	1999	491,504	12.28
1978	156,123	11.84	2000	463,646	11.88
1979	162,276	12.02	2001	361,237	11.93
1980	162,897	11.18	2002	275,468	7.92
1981	161,669	10.49	2003	338,132	9.60
1982	175,448	13.33	2004	385,297	13.51
1983	179,405	11.53	2005	375,398	9.09
1984	176,634	11.55	2006	383,926	10.20
1985	180,989	11.30	2007	526,705	11.96
1986	223,331	11.16	2008	500,277	11.78
1987	248,080	11.98	2009	509,956	11.32
1988	265,943	12.00	2010	602,867	12.67
1989	239,945	12.00	2011	736,215	13.12
1990	254,885	12.00	2012	803,092	12.16
1991	292,995	9.25	2013	797,616	12.60
1992	334,353	10.14	2014	790118	12.44
1993	293,567	11.94	2015	538970	13.16
1994	326,531	10.00	2016	753002	13.4
1995	363,395	11.27	2017	940218	12.6
1996	393,613	13.50	2018	1173072	12.4
			2019	1197191	12.7

Source: Department of Immigration





Data showed that more than 65 percent of the tourist visited Nepal with purpose of holiday celebration and pleasure. Similarly, 16.52% tourist came for adventure including trekking & mountaineering, 14.36% for pilgrimage and remaining for other purpose (4.12%) in year 2019.

PART IV

PURPOSE OF VISIT

TABLE 4.1: TOURIST ARRIVAL BY PURPOSE OF VISIT, 1993-2019

Year	Holiday Pleasure	Trekking & Mountaineering	Business	Pilgrimage	Official	Conv./ Conf.	Others	Not Specified	Total
1993	170,279	69,619	19,495	10,429	15,812	5,367	2,566	-	293,567
	(58.0)	(23.7)	(6.6)	(3.6)	(5.4)	(1.8)	(0.9)		(100.0)
1994	168,155	76,865	23,522	5,475	20,431	5,361	26,722	-	326,531
	(51.5)	(23.5)	(7.2)	(1.7)	(6.3)	(1.6)	(8.2)		(100.0)
1995	183,207	84,787	21,829	5,257	20,090	5,272	42,953	-	363,395
	(50.4)	(23.3)	(6.0)	(1.4)	(5.5)	(1.5)	(11.8)		(100.0)
1996	209,377	88,945	25,079	4,802	20,191	6,054	39,165	-	393,613
	(53.2)	(22.6)	(6.4)	(1.2)	(5.1)	(1.5)	(10.0)		(100.0)
1997	249,360	91,525	27,409	4,068	24,106	5,824	19,565	-	421,857
	(59.1)	(21.7)	(6.5)	(1.0)	(5.7)	(1.4)	(4.6)		(100.0)
1998	261,347	112,644	24,954	16,164	22,123	5,181	21,271	-	463,684
	(56.4)	(24.3)	(5.4)	(3.5)	(4.8)	(1.1)	(4.6)		(100.0)
1999	290,862	107,960	23,813	19,198	24,132	5,965	19,574	-	491,504
	(59.2)	(22.0)	(4.8)	(3.9)	(4.9)	(1.2)	(4.0)		(100.0)
2000	255,889	118,780	29,454	15,801	20,832	5,599	17,291	-	463,646
	(55.2)	(25.6)	(6.4)	(3.4)	(4.5)	(1.2)	(3.7)		(100.0)
2001	187,022	100,828	18,528	13,816	18,727	0	22,316	-	361,237
	(51.8)	(27.9)	(5.1)	(3.8)	(5.2)	(0.0)	(6.2)		(100.0)
2002	110,143	59,279	16,990	12,366	17,783	0	58,907	-	275,468
	(40.0)	(21.5)	(6.2)	(4.5)	(6.5)	(0.0)	(21.4)		(100.0)
2003	97,904	65,721	19,387	21,395	21,967	0	111,758	-	338,132
	(29.0)	(19.4)	(5.7)	(6.3)	(6.5)	(0.0)	(33.1)		(100.0)
2004	167,262	69,442	13,948	45,664	17,088	0	71,893	-	385,297
	(43.4)	(18.0)	(3.6)	(11.9)	(4.4)	(0.0)	(18.7)		(100.0)

TABLE 4.1: TOURIST ARRIVAL BY PURPOSE OF VISIT, 1993-2019 (contd.)

Year	Holiday Pleasure	Trekking & Mountaineering	Business	Pilgrimage	Official	Conv./ Conf.	Others	Not Specified	Total
2006	145,802	66,931	21,066	59,298	18,063	0	72,766	-	383,926
	(27.7)	(12.7)	(4.0)	(11.3)	(3.4)	(0.0)	(13.8)		100.0
2007	217,815	101,320	24,487	52,594	21,670	8,019	78,644	22,156	526,705
	(41.4)	(19.2)	(4.6)	(10.0)	(4.1)	(1.5)	(14.9)	(4.2)	100.0
2008	148,180	104,822	23,039	45,091	43,044	6,938	99,634	29,529	500,277
	(29.6)	(21.0)	(4.6)	(9.0)	(8.6)	(1.4)	(19.9)	(5.9)	100.
2009	140,992	132,929	22,758	51,542	24,518	9,985	87,134	40,098	509,956
	(27.6)	(26.1)	(4.5)	(10.1)	(4.8)	(2.0)	(17.1)	(7.9)	100.0
2010	263,938	70,218	21,377	101,335	26,374	9,627	52,347	57,651	602,867
	(43.8)	(11.6)	(3.5)	(16.8)	(4.4)	(1.6)	(8.7)	(9.6)	100.0
2011	425,721	86,260	17,859	63,783	24,054	10,836	37,311	70,391	736,215
	(57.8)	(11.7)	(2.4)	(8.7)	(3.3)	(1.5)	(5.1)	(9.6)	100.0
2012	379,627	105,015	24,785	109,854	30,460	13,646	48,540	91,165	803,092
	(47.3)	(13.1)	(3.1)	(13.7)	(3.8)	(1.7)	(6.0)	(11.4)	100.
2013	437,891	97,309	30,309	40,678	39,881	15,952	62,214	73,381	797,616
	(54.9)	(12.2)	(3.8)	(5.1)	(5.0)	(2.0)	(7.8)	(9.2)	100.0
2014	395,849	97,185	24,494	98,765	32,395	13,432	53,728	74,271	790,118
	(50.1)	(12.3)	(3.1)	(12.5)	(4.1)	(1.7)	(6.8)	(9.4)	100.0
2015	3,86,065	9,162	20,876	14,996	21,479	9,038	77,354		538,970
	71.63	1.70	3.87	2.78	3.99	1.68	14.35		100.0
2016	489,451	66,490	24,322	82,830	21,310	12,801	55,797		753,002
	65.0	8.83	3.23	11.0	2.83	1.7	7.41		100
2017	658,153	75,217	na	141,033	na	na	65,815		940,218
	70.0	8.0		15.0			7		100
2018	703,843	187,692	na	169,180	na	na	112,357		1,173,072
	60.0	16.0		14.4			9.6		100
2019	778,173	197,786	na	171,937	na	na	49,301		1,197,191
	65.0	16.52		14.36			4.12		100

Note: estimated figure.

Chart 4.1: Purpose of visit 2019







Nepal is renowned for adventure tourism due to its prominent peaks. The number of expedition permitted teams has reached to 1921 while 8,202 in persons. The highest number of climbers came from USA, UK, China, India, Germany and Japan respectively. Mountain most likes are the Mountain Everest, Amadablam and Manaslu. Out of 11, 97,191 tourist 1,95,621 tourist trekked at different part of Nepal and 4,29,746 visited at different wildlife conservation areas.

PART
V

TREKKING AND EXPEDITION

TABLE 5.1: NUMBER OF TREKKERS IN DIFFERENT TREKKING AREAS BY MONTH, 2019

TIMS	Free Individual Trekkers		Group Trekkers		Total Trekkers		All Total
	Months	Non SAARC	SAARC	Non SAARC	SAARC	Non SAARC	
January	1594	64	2800	0	4394	64	4458
February	2180	58	4800	300	6980	358	7338
March	5947	608	11700	4000	17647	4608	22255
April	6063	517	13200	4500	19263	5017	24280
May	2947	488	5000	5300	7947	5788	13735
June	934	417	1500	4000	2434	4417	6851
July	965	90	5600	6500	6565	6590	13155
August	1400	124	0	0	1400	124	1524
September	3505	724	4800	2500	8305	3224	11529
October	5965	421	8000	0	13965	421	14386
November	6343	1841	26600	8500	32943	10341	43284
December	2056	891	5800	0	7856	891	8747
Total	39899	6243	89800	35600	129699	41843	171542

Source: Nepal Tourism Board

TABLE 5.2: NUMBER OF TREKKERS IN DIFFERENT TREKKING AREA, 2001-2019

Year	Mustang	Lower Dolpa	Upper Dolpa	Humla	Manaslu	Kanchanjunga	T.Valley	Narphu	Others	Total
2001	922	488	119	337	798	690				3,354
2002	536	0	119	339	428	478			79	1,979
2003	572	0	369	223	645	402			154	2,365
2004	825	329	77	577	682	458			275	3,223
2005	661	200	81	782	544	167			279	2,714
2006	248	225	92	1,256	561	335			395	3,112
2007	1,282	419	198	1,542	895	404			587	5,327
2008	838	709	383	1,065	1,443	1,490			520	6,448
2009	1,659	739	313	1,177	1,635	508			948	6,979
2010	2,162	785	358	1,633	2,162	488			1,427	9,015
2011	2,950	808	397	1,758	2,813	591			1,398	10,715
2012	2,965	982	536	1,508	3,319	635	780	515	392	11,632
2013	2,862	585	338	1,603	4,439	837	1,179	862	232	12,937
2014	3883	1117	469	492	3764	777	1454	776	2333	15065
2015	2673	788	328	1346	2134	731	636	770	273	9679
2016	3984	1023	531	10105	4650	502	1219	903	356	23569
2017	4240	924	425	13398	6632	479	1681	1115	1099	29993
2018	4116	1222	525	10814	7371	970	2030	1291	537	28876
2019	3739	1263	530	8670	6070	911	1393	1066	437	24079

Source: Department of Immigration

TABLE 5.3: TREKKERS IN PROTECTED AREAS BY MONTH, 2019

Month	MUSTANG	MANASALU	NAR PHU	TSUM VALLEY	KANCHANJIANG-HA	SIMIKOT	MUGU	DOLAKHA	LOWER DOLPA	UPPER DOLPA	SANKHUWASA-BHA	Others	Total
January	12	25	2	16	11	14	0	0	7	5	6	0	98
February	22	89	4	16	14	4	0	0	9	0	6	6	170
March	136	921	96	215	105	15	0	2	6	0	15	13	1524
April	561	1171	200	250	148	35	2	12	136	37	25	17	2594
May	593	254	52	60	36	1942	2	12	73	22	16	0	3062
June	114	37	13	12	0	3124	2	3	28	18	0	0	3351
July	274	14	28	4	2	902	8	4	56	22	2	9	1325
August	462	110	23	19	2	2373	13	0	93	49	0	16	3160
September	709	934	165	183	111	215	16	11	507	223	29	18	3121
October	856	2515	483	618	482	46	0	59	348	154	66	47	5674
Total	3739	6070	1066	1393	911	8670	43	103	1263	530	165	126	24079

Source: Department of Immigration.

Table 5.4: NUMBER OF FOREIGNERS VISITED AT NATIONAL PARKS AND CONSERVATION AREAS BY MONTH, FY 2075/76

Conservation Area	Shrawan	Bhadra	Aswin	Kartik	Mansir	Paush	Magh	Fagun	Chaitra	Baisakh	Jesth	Asar	Total
Shivapuri Nagarjun National Park	740	885	1371	1943	1160	842	758	926	1341	1243	718	569	12496
Chitwan National Park	7528	6603	11329	19308	13293	11356	9747	12403	16230	16098	12421	6170	142486
Sagarmatha National Park	426	1148	11399	12987	4102	2244	1178	2854	8207	10054	2350	340	57289
Bardiya National Park	80	144	711	1467	908	494	251	918	1499	1149	446	193	8260
Langtang National Park	192	391	1553	2314	746	737	312	1064	1918	1639	544	722	12132
Makalu Barun National Park	2	15	393	837	73	11	5	18	262	339	102	0	2057
Rara National Park	9	6	70	123	34	15	4	14	37	37	41	31	421
Khaptad National Park	0	2	8	15	3	7	0	1	4	6	16	5	67
Banke National Park	0	0	0	0	3	0	0	0	4	4	0	1	12
Shey Phoksundo National Park	56	46	164	190	13	0	0	0	10	60	32	7	578
Shukla Phata Wildlife Reserve	0	0	0	37	42	27	18	59	42	53	35	16	329
Parsa Wildlife Reserve	0	0	2	3	6	1	0	0	0	3	0	0	15
Koshi Tappu Wildlife Reserve	12	0	13	42	51	29	36	67	83	22	25	8	388
Dhorpatan Hunting Reserve	0	6	20	18	0	0	5	4	232	63	76	0	424
Apinappa Conservation Area	0	0	8	6	5	0	0	11	0	4	4	0	38
Krishnasar Conservation Area	0	4	6	7	1	4	5	3	3	0	3	1	37
Kanchanjunga Conservation Area	0	17	234	297	19	11	0	34	75	119	0	0	806
Annapurna Conservation Area	6379	8619	29218	25683	10620	7763	6696	12098	26282	25304	15418	7666	181746
Manaslu Conservation Area	53	372	2301	2135	255	46	35	367	1302	692	80	17	7655
Gaurishankar Conservation Area	33	124	538	669	218	69	80	199	242	266	49	41	2528
Total	15510	18382	59338	68081	31552	23656	19130	31040	57773	57155	32360	15787	429764

Source: Department of National Park and Wildlife Conservation

TABLE 5.5: NUMBER OF FOREIGN VISITORS TO NATIONAL PARKS & CONSERVATION AREAS, 2071/72- 075/76

Conservation Area	2071/72	2072/73	2073/74	2075/76	2075/76
Chitwan National Park	178257	87391	139125	118621	142486
Bardiya National Park	13548	10638	17959	6773	8260
Langtang National Park	12265	5016	8254	10619	12132
Sagarmatha National Park	34412	27794	45112	56303	57289
Rara National Park	143	132	201	317	421
Shey Phoksumdo National Park	383	431	535	469	578
Khaptad National Park	2	21	26	21	67
Makalu Barun National Park	1270	828	1537	1252	2057
Shivapuri Nagarjun National Park	NA	NA	NA	16813	12496
Banke National Park	0	0	4	1	12
Shukla Phata Wildlife Reserve	NA	NA	NA	464	329
Koshi Tappu Wildlife Reserve	NA	NA	NA	436	388
Parsa Wildlife Reserve	263	235	417	95	15
Dhorpatan Hunting Reserve	0	91	163	119	424
Krishnasar Conservation Area	NA	NA	NA	43	37
Apinappa Conservation Area	3	29	19	36	38
Kanchanjunga Conservation Area	0	502	479	821	806
Annapurna Conservation Area	114418	83419	144409	172720	181746
Manaslu Conservation Area	5658	2287	5745	7200	7655
Gaurishanker Conservation Area	2818	1840	2770	2668	2528
Total				395791	429764

Source: Department of National Park and Wildlife Conservation

TABLE 5.6: NUMBER OF EXPEDITION TEAMS, MEMBERS & SUMMITTEERS BY PEAK, 2019

Permit No	Mountain & Height	Permitted Members			Success Summiters		
		Male	Female	Total	Male	Female	Total
1	Mt. Amadablam (6814m.)	339	68	407	163	28	191
2	Mt. Amolsang (6393m.)	1	0	1	1	0	1
3	Mt. Amphu 1 (6740m.)	3	0	3	0	0	0
4	Mt. Annapurna I (8091m.)	15	4	19	11	4	15
5	Mt. Annapurna III (7555m.)	3	0	3	0	0	0
6	Mt. Annapurna IV (7525m.)	10	1	11	1	0	1
7	Mt. Api (7132m.)	3	1	4	0	0	0
8	Mt. Araniko Chuli(6039m.)	17	6	23	0	0	0
9	Mt. Ardang (6034m.)	2	2	4	1	1	2
10	Mt. Baden Powell Scout Peak # 5890m.	1	1	2	1	1	2
11	Mt. Baruntse (7152m.)	27	6	33	5	3	8
12	Mt. Bhrikuti (6460m.)	12	10	22	0	0	0
13	Mt. Chamlang (7319m.)	16	3	19	4	0	4
14	Mt. Chandi Himal (6096m.)	3	0	3	0	0	0
15	Mt. Chhopabamare (6109m.)	1	1	2	1	1	2
16	Mt. Chobuje (6685m.)	2	0	2	0	0	0
17	Mt. Chukyima Go (6258m.)	1	1	2	0	0	0
18	Mt. Danfe Shail (6103m.)	2	1	3	0	0	0
19	Mt. Dhawalagiri (8167m.)	27	9	36	4	1	5
20	Mt. Everest (88485m.)	315	78	393	215	65	280
21	Mt. Gandharva Chuli (6248m.)	1	0	1	0	0	0
22	Mt. Gangapurna (7455m.)	7	2	9	0	0	0
23	Mt. Gaugiri (6110m.)	17	8	25	5	2	7
24	Mt. Gyalzen Peak(6151m.)	4	2	6	1	2	3

Permit No	Mountain & Height	Permitted Members			Success Summiteers		
		Male	Female	Total	Male	Female	Total
25	Mt. Himjung (7092m.)	4	0	4	0	0	0
26	Mt. Himlung (7126m.)	97	25	122	36	16	52
27	Mt. Hongde (6456m.)	6	0	6	6	0	6
28	Mt. Hongu (Sura Peak) (6764m.)	1	0	1	0	0	0
29	Mt. Hunku Chuli (6833m.)	2	0	2	0	0	0
30	Mt. Kanchanjunga Main (8586m.)	29	5	34	23	5	28
31	Mt. Kangbachen (7903m.)	1	1	2	0	0	0
32	Mt. Khang Karpo (6646m.)	2	0	2	0	0	0
33	Mt. Khangchung (UIAA Peak) 6063m.	2	0	2	0	0	0
34	Mt. Khangtega (6783m.)	2	0	2	2	0	2
35	Mt. Kumbhakarna ((Jannu 7710m.)	6	0	6	0	0	0
36	Mt. Lachama Chuli (6721m.)	8	3	11	0	0	0
37	Mt. Langju Peak (6426m.)	2	0	2	0	0	0
38	Mt. Langtang Lirung (7234m.)	2	0	2	0	0	0
39	Mt. Langtang Ri (7205m.)	4	1	5	0	0	0
40	Mt. Lhotse (8516m.)	101	18	119	30	10	40
41	Mt. Linku Chuli 2(6659m.)	1	4	5	0	4	4
42	Mt. Lubula (6899m.)	13	2	15	8	2	10
43	Mt. Makalu (8463m.)	44	13	57	28	9	37
44	Mt. Manaslu (8163m.)	209	60	269	140	48	188
45	Mt. Mansail (6242m.)	10	7	17	0	0	0
46	Mt. Mukot Himal (6087m.)	18	12	30	0	0	0
47	Mt. Mustang Himal (6195m.)	10	5	15	0	0	0
48	Mt. Nemjung (7139m.)	7	1	8	3	0	3
49	Mt. Norbu Kang (6005m.)	4	3	7	1	0	1

Permit No	Mountain & Height	Permitted Members			Success Summiteers		
		Male	Female	Total	Male	Female	Total
50	Mt. Nuptse (7855m.)	33	12	45	0	0	0
51	Mt. Panpoche 1 (Pang Phunch 6620m.)	8	0	8	3	0	3
52	Mt. Panpoche II (6504m.)	3	0	3	3	0	3
53	Mt. Pasang Lhamu (7351m.)	4	0	4	0	0	0
54	Mt. Peri (6174m.)	1	0	1	0	0	0
55	Mt. Pokhar khang (6348m.)	8	5	13	0	0	0
56	Mt. Putha Hiunchuli (7246m.)	29	7	36	18	5	23
57	Mt. Pumori (7161m)	9	2	11	4	0	4
58	Mt. Ratna Chuli (7128m.)	5	0	5	0	0	0
59	Mt. Saribung (6346m.)	65	45	110	8	4	12
60	Mt. Sherson (Peak 3, 6422m.)	1	1	2	0	0	0
61	Mt. Shey Shikhar (6139m.)	5	3	8	0	0	0
62	Mt. Tengi Ragi Tau (6938m.)	8	0	8	7	0	7
63	Mt. Teng Kangpoche (6482m.)	6	1	7	0	0	0
64	Mt. Tengkoma (6215m.)	2	2	4	1	2	3
65	Mt. Thakar Go East (6152m.)	4	0	4	0	0	0
66	Mt. Thapa Peak (Dhampus 6012m.)	54	22	76	25	8	33
67	Mt. Thorang Peak (6144m.)	28	9	37	5	0	5
68	Mt. Tilicho Peak (7134m.)	4	0	4	0	0	0
69	Mt. Tobsar Peak (6100m.)	1	1	2	0	0	0
Total		1692	474	2166	764	221	985

Source: Department of Tourism

TABLE 5.9: NUMBER OF CLIMBERS BY COUNTRY, 2019

S.N	Country	Permitted Members			Success Summitter		
		Male	Female	Total	Male	Female	Total
1	Albania	0	1	1	0	0	0
2	Andorra	2	1	3	2	1	3
3	Argentina	11	0	11	6	0	6
4	Australia	44	16	60	14	4	18
5	Austria	22	6	28	13	3	16
6	Azerbaijan	3	0	3	3	0	3
7	Bahrain	1	0	1	0	0	0
8	Bangladesh	2	0	2	1	0	1
9	Belgium	11	1	12	6	0	6
10	Brazil	14	2	16	7	1	8
11	Bulgaria	7	1	8	7	0	7
12	Canada	36	12	48	20	5	25
13	Chile	11	1	12	7	0	7
14	China	107	55	162	82	42	124
15	Colombia	1	0	1	0	0	0
16	Croatia	1	0	1	0	0	0
17	Cyprus	1	0	1	0	0	0
18	Czech Republic	13	3	16	4	1	5
19	Denmark	6	0	6	1	0	1
20	Dominican Republic	1	0	1	0	0	0
21	Ecuador	3	0	3	3	0	3
22	Egypt	1	0	1	1	0	1
23	Estonia	1	1	2	1	1	2
24	Finland	3	0	3	2	0	2
25	France	150	46	196	48	13	61
26	Georgia	9	0	9	9	0	9
27	Germany	99	28	127	35	7	42
28	Greece	6	4	10	2	4	6
29	Hong Kong	7	1	8	7	1	8
30	Hungary	3	3	6	0	0	0

S.N	Country	Permitted Members			Success Summitter		
		Male	Female	Total	Male	Female	Total
31	Iceland	8	1	9	6	1	7
32	India	116	23	139	85	15	100
33	Ireland	12	4	16	8	2	10
34	Islamic Republic of Iran	7	2	9	6	2	8
35	Israel	4	2	6	0	1	1
36	Italy	72	19	91	22	2	24
37	Japan	48	19	67	23	13	36
38	Kazakhstan	1	0	1	1	0	1
39	Korea, Republic of	21	0	21	5	0	5
40	Kuwait	4	0	4	1	0	1
41	Kyrgyz Republic	2	0	2	1	0	1
42	Lebanon	6	3	9	4	3	7
43	Lithuania	5	0	5	5	0	5
44	Macao	1	0	1	0	0	0
45	Malaysia	1	1	2	1	0	1
46	Mexico	7	5	12	2	3	5
47	Moldova, Republic of	1	0	1	1	0	1
48	Nepal	43	12	55	18	12	30
49	Netherlands	20	10	30	8	6	14
50	New Zealand	13	7	20	5	2	7
51	Norway	14	10	24	12	8	20
52	Oman	0	1	1	0	1	1
53	Pakistan	10	0	10	6	0	6
54	Peru	3	1	4	0	1	1
55	Philippines	2	1	3	0	0	0
56	Poland	63	25	88	15	9	24
57	Portugal	5	2	7	1	0	1
58	Qatar	2	0	2	2	0	2
59	Repb. Of Botswana	0	1	1	0	0	0
60	Republic of Kosovo	1	1	2	1	1	2
61	Romania	12	4	16	5	3	8

S.N	Country	Permitted Members			Success Summitter		
		Male	Female	Total	Male	Female	Total
62	Russian Federation	37	13	50	21	10	31
63	Saudi Arabia	1	1	2	1	1	2
64	Serbia	2	0	2	0	0	0
65	Singapore	5	1	6	5	0	5
66	Slovakia	6	0	6	1	0	1
67	Slovenia	10	3	13	1	0	1
68	South Africa	1	2	3	0	1	1
69	Spain	74	10	84	20	0	20
70	Swaziland	5	3	8	2	1	3
71	Sweden	12	3	15	4	1	5
72	Switzerland	35	22	57	20	9	29
73	Syrian Arab Republic	1	0	1	1	0	1
74	Taiwan, Province of China	1	2	3	1	2	3
75	Thailand	6	3	9	1	1	2
76	Turkey	3	0	3	1	0	1
77	U.S.of America	234	43	277	94	13	107
78	Ukraine	18	2	20	7	0	7
79	United Kingdom	143	29	172	56	13	69
80	United Arab Emirates	16	1	17	3	0	3
81	Uruguay	1	0	1	1	0	1
82	Viet Nam	1	0	1	0	0	0
Total		1692	474	2166	765	220	985

Source: Department of Tourism

TABLE 5.11: NUMBER OF SUMMITTEERS BY COUNTRY AND MOUNTAIN, 2019

Mountain/ Country	Andorra	Argentina	Australia	Austria	Azerbaijan	Bangladesh	Belgium	Brazil	Bulgaria	Canada	Chile	China	Czech Republic	Denmark	Ecuador	Egypt	Estonia	Finland	France	Georgia	Germany	Greece	Hong Kong	I. R. of Iran	Iceland	India	Ireland	Israel	Italy	Japan	Kazakhstan	south Korea	North Korea	Kuwait	Kyrgyz Republic	Lebanon	Lithuania	Malaysia	Mexico									
Mt. Amadablam (6814m.)		2	8	1								4	1	1	1			1	5	2	10		5	4	2	2		4	7	1										1	2							
Mt. Amolsang (6393m.)																				1		1																										
Mt. Annapurna 1 (8091m.)												4																	2		1												1					
Mt. Annapurna IV (7525m.)																													1																			
Mt. Ardang (6034m.)										2																																						
Mt. Baden Powel Scout																																																
Mt. Baruntse (7152m.)		2																	1																													
Mt. Chamlang (7319m.)																				2																												
Mt. Chamlang (7321m.)													2																																			
Mt. Chhopa- bamare																			1																													
Mt. Dhaulagiri (8163m.)									1		1																																					
Mt. Everest (8848m.)																																																
Mt. Everest(8848m.)		3	1	1			2	2		7	1	54	1	1	1	1			3	1	1	3	5	1	2	61	4																				5	
Mt. Gaugiri (6110m.)											1									2																												
Mt. Gyalzen Peak (6151m.)																																																
Mt. Himlung (7126m.)																																																

Mountain/country	Moldova	Nepal	Netherlands	Netherlands	New Zealand	Norway	Oman	Pakistan	Peru	Poland	Portugal	Qatar	Republic of Kosovo	Romania	Russian Federation	Saudi Arabia	Singapore	Slovakia	Slovenia	South Africa	Spain	Swaziland	Sweden	Switzerland	Syrian Arab Republic	Taiwan, Province of China	Thailand	Turkey	U.S. of America	Ukraine	United Arab Emirates	United Kingdom	Uruguay	Grand Total	
Mt. Amadablam (6814m.)		2	1		5	4				7				3	#		1	1			5	1	4	5		1			32	4		21		190	
Mt. Amolsang (6393m.)																																		1	
Mt. Annapurna 1 (8091m.)		1				1								1									1		1		1				1			15	
Mt. Annapurna IV (7525m.)																																		1	
Mt. Ar dang (6034m.)																																		2	
Mt. Baden Pawel Scout Peak		2																																2	
Mt. Baruntse (7152m.)			1												1									1				2						8	
Mt. Chamlang (7319m.)																																		2	
Mt. Chamlang (7321m.)																																		2	
Mt. Chhobabamare (6109m.)																													1					2	
Mt. Dhaulagiri (8163m.)		1																			1			1										5	
Mt. Everest (8848m.)																																1	1	1	
Mt. Everest(8848m.)		13	1		1	7	1	1	1	1	1	1	2	2	2	2	3				1	1	1	1	1	2	2	42			29		279		
Mt. Gaugiri (6110m.)																								3										7	
Mt. Gyalzen Peak (6151m.)		3																																3	
Mt. Himlung (7126m.)													1											2								3	1		8

Mountain/country	Andorra	Argentina	Australia	Austria	Azerbaijan	Bangladesh	Belgium	Brazil	Bulgaria	Canada	Chile	China	Czech Republic	Denmark	Ecuador	Egypt	Estonia	Finland	France	Georgia	Germany	Greece	Hong Kong	I. R. of Iran	Iceland	India	Ireland	Israel	Italy	Japan	Kazakhstan	South Korea	North Korea	Kuwait	Kyrgyz Republic	Lebanon	Lithuania	Malaysia	Mexico											
Mt. Himlung Himal (7126m.)			2	1	1	1		1		1		2							10	6										5																				
Mt. Hongde (6556m.)																			1																															
Mt. Kanchanjunga (8586m.)	1					2					2	1									1				14					1													1							
Mt. Khangtega (6783m.)																														2																				
Mt. Lhotse (8516m.)					1	1	3	1	3	1	3	1	3	1	1				2					2	3	3	1			2																				
Mt. Linku Chuli 2(6659m.)												1																																	1					
Mt. Lubula (6899m.)																			5																															
Mt. Makalu (8463m.)		2				1					3															18																								
Mt. Manaslu (8163m.)	3	4	5	1	2	4	2	6	2	6	2	51	1					2	1	7		12	1		2	1	2	3	1	8	10	1																		
Mt. Nernjung (7139m.)																																																		
Mt. Norbu Kang (6005m.)																			1																															
Mt. Panpoche I (6620m.)																				3																														
Mt. Panpoche II (6504m.)																				3																														
Mt. Pumori (7161m.)				1																																														
Mt. Putha Hunchuli (7246m.)	2	1					1			1																																								
Mt. Saribung (6346m.)																																																		
Mt. Saribung (6346m.)												1							4	1																														
Mt. Tengri Ragi Tau (6938m.)																			1																															
Mt. Tengkoma (6215m.)		3																																																
Mt. Thapa Peak 6012m.)						1																																												
Mt. Thorang Peak (6144m.)																																																		
Grand Total	3	6	17	16	3	1	6	8	7	25	7	##	5	1	3	1	2	2	61	9	42	6	8	8	7	##	10	1	24	36	1	1	4	1	1	7	5	1												

Mountain/country	Moldova	Nepal	Netherlands	Netherlands	New Zealand	Norway	Oman	Pakistan	Peru	Poland	Portugal	Qatar	Kosovo	Romania	Russian Federation	Saudi Arabia	Singapore	Slovakia	Slovenia	South Africa	Spain	Swaziland	Sweden	Switzerland	Syrian	Taiwan, POC	Thailand	Turkey	U.S.of America	Ukraine	UAE	United Kingdom	Uruguay	Grand Total
Mt. Himlung Himal (7126m.)		1	3			2			1												3	1									1		44	
Mt. Hongde (6556m.)																							5										6	
Mt. Kanchanjunga (8586m.)		2														1			1					1									28	
Mt. Khangtega (6783m.)																																	2	
Mt. Lhotse (8516m.)								2	1	1	1	1	1	4							3			1									40	
Mt. Linku Chuli 2(6659m.)		1							1																								4	
Mt. Lubula (6899m.)			4																														10	
Mt. Makalu (8463m.)						1	1	1	1	1																1	1	5	1				37	
Mt. Manaslu (8163m.)	1	4				2	2	2	10					1	7						3		1	3		1	9	3					188	
Mt. Nemjung (7139m.)																																	3	
Mt. Norbu Kang (6005m.)																																	1	
Mt. Panpoche I (6620m.)																																	3	
Mt. Panpoche II (6504m.)																																	3	
Mt. Pumori (7161m.)					1																												4	
Mt. Putha Hiunchuli (7246m.)						3																											23	
Mt. Sarbung (6346m.)			2																														2	
Mt. Saribung (6346m.)				2																													10	
Mt. Tengri Ragi Tau (6988m.)																					3			1									7	
Mt. Tengkoma (6215m.)																																	3	
Mt. Thapa Peak 6012m.)									3												2			1									33	
Mt. Thorang Peak (6144m.)																								1									5	
Grand Total	1	##	##	2	7	##	1	6	1	24	1	2	2	8	##	2	5	1	1	1	##	3	5	##	1	3	2	1	##	7	3	##	1	984

TABLE 5.10: NUMBER OF EXPEDITION TEAM MEMBERS PAYING ROYALTY BY PEAKS, 2019

S.N.	Name & Height (Meter) of Mountain	No. of Member	Royalty USD	Royalty Nrs.
1	Mt. Chamlang (7321m.)	12	6000	660970
2	Mt. Nuptse (7855m.)	27	16200	1787670
3	Mt. Everest (8848m.)	397	4058000	449436962.5
4	Mt. Lhotse (8516m.)	13	11700	1336230
5	Mt. Saribung (6346m.)	112	19060	2132629
6	Mt. Amadablam (6814m.)	402	159200	18024800
7	Mt. Amolsang (6393m.)	1	125	14156.25
8	Mt. Amphu 1 (6740m.)	3	600	67680
9	Mt. Annapurna 3 (7555m.)	3	900	101655
10	Mt. Annapurna I (8091m.)	23	41400	4548510
11	Mt. Annapurna IV (7525m.)	47	7700	4565802
12	Mt. Api (7132m.)	4	1000	114450
13	Mt. Araniko Chuli(6039m.)	23	3935	435840.25
14	Mt. Ardang (6034m.)	4	500	56775
15	Mt. Baden Powell Scout Peak (Urkema Peak) 5890m.	2	0	4000
16	Mt. Baruntse (7129m.)	33	9750	1101487.5
17	Mt. Bhrikuti (6476m.)	21	2090	235707.5
18	Mt. Chamlang (7319m.)	7	1750	197587.5
19	Mt. Chandi Himal (6096m.)	3	375	42525
20	Mt. Chhopabamare (6109m.)	2	500	57150
21	Mt. Chobuje (6685m.)	2	800	88880
22	Mt. Chukyima Go (6258m.)	2	250	28350
23	Mt. Danfe Shail (6103m.)	3	375	42900
24	Mt. Dhawalagiri I (8167m.)	36	33300	3827135
25	Mt. Gandharva Chuli (6248m.)	1	125	14287.5

S.N.	Name & Height (Meter) of Mountain	No. of Member	Royalty USD	Royalty Nrs.
26	Mt. Gangapurna (7140)	9	2250	254350
27	Mt. Gaugiri (6110m.)	25	5000	563031.25
28	Mt. Gyalzen Peak(6151m.)	6	0	24000
29	Mt. Himjung (7092m.)	4	2000	219975
30	Mt. Himlung (7126m.)	121	36750	4126984.5
31	Mt. Hongde (6456m.)	6	1200	136440
32	Mt. Hongu (Sura Peak)	1	200	22750
33	Mt. Hunku Chuli (6833m.)	2	400	45240
34	Mt. Kanchanjunga (8586m.)	34	57600	6353210
35	Mt. Kangbachen (7903m.)	2	1200	132480
36	Mt. Khang Karpo (6646m.)	2	400	45420
37	Mt. Khangchung (6063m.)	2	250	28250
38	Mt. Khangtega (6783m.)	2	400	45260
39	Mt. Kumbhakarna (7710m.)	6	2700	309015
40	Mt. Lachama Chuli (6721m.)	11	4400	490380
41	Mt. Langju Peak (6426m.)	2	250	28237.5
42	Mt. Langtang Lirung (7234m.)	2	1000	110700
43	Mt. Langtang Ri (7205m.)	5	1250	142975
44	Mt. Lhotse (8516m.)	98	174900	19359855
45	Mt. Linku Chuli (6659m.)	5	1000	113800
46	Mt. Lubula (6899m.)	14	2800	316960
47	Mt. Makalu (8463m.)	59	100000	11061940.32
48	Mt. Manaslu (8163m.)	270	237800	27315400
49	Mt. Mansail (6242m.)	17	1550	172470
50	Mt. Mukot Himal (6087m.)	30	5250	587131
51	Mt. Mustang Himal (6195m.)	15	2130	235942.5
52	Mt. Nemjung (7139m.)	11	2750	312512.5

S.N.	Name & Height (Meter) of Mountain	No. of Member	Royalty USD	Royalty Nrs.
53	Mt. Norbu Kang (6005m.)	7	875	99750
54	Mt. Nuptse (7855m.)	18	8400	940920
55	Mt. Panpoche 1 (6620m.)	8	1600	184460
56	Mt. Panpoche II (6504m.)	3	600	69210
57	Mt. Pasang Lhamu (7351m.)	4	2000	219700
58	Mt. Pokhar khang (6348m.)	13	1625	185331.25
59	Mt. Pumori (7161m)	11	5500	604175
60	Mt. Putha Hiunchuli (7246m.)	36	10250	1551750
61	Mt. Ratna Chulim (7128m.)	5	2500	277875
62	Mt. Sherson (Peak 3, 6422m.)	2	250	28250
63	Mt. Shey Shikhar (6139m.)	8	560	61684
64	Mt. Tengi Ragi Tau (6943m.)	8	1600	181790
65	Mt. Tengkangpoche (6482m.)	7	875	99468.75
66	Mt. Tengkoma (6215m.)	4	500	56625
67	Mt. Thakar Go East (6152m.)	4	500	56650
68	Mt. Thapa Peak (6012m.)	89	11750	1328650
69	Mt. Thorang Peak (6144m.)	40	6250	702706.25
70	Mt. Tilicho Peak (7134m.)	4	1000	113400
71	Mt. Tobsar Peak (6100m.)	2	250	28337.5
Grand Total		2217	5077950	568269582.3

Source: Department of Tourism

TABLE 5.11: NUMBER OF CLIMBERS BY PEAK, 2019 (Permit Issued By Nepal Mountaineering Association)

Country	Cholatse	Kyazo Ri	Nirekha	Langsisa Ri	Ombigai chen	Bokta	Lobuje West	Larkya	ABI	Singuchuli	Mera	Kusum Kanguru	Kwagde	Chlu West	Imja Tse (Is-land)	Pharchamo	Lobuje	Ramdung	Pisang	Ganjala Chuli ()	Paldor	Hinchuli	Chlu East	Total
Argentina	-	-	-	-	-	-	2	-	-	3	-	-	-	-	11	-	2	-	-	-	-	-	-	18
Armenia	-	-	-	-	-	-	-	-	-	-	-	-	-	-	3	-	-	-	-	-	-	-	-	3
Austria	-	-	-	-	-	4	-	19	-	-	61	-	-	-	86	22	14	-	-	6	-	-	3	215
Australia	3	2	1	-	-	-	2	1	11	84	-	-	-	2	124	3	65	2	1	-	-	-	3	304
Azerbaijan	-	-	-	-	-	-	-	-	-	-	-	-	-	-	1	-	-	-	-	-	-	-	-	1
Bangladesh	-	-	-	-	-	-	-	-	-	5	-	-	-	-	0	4	-	-	-	-	-	-	-	9
Belarus	-	-	-	-	-	-	-	-	-	7	-	-	-	-	3	-	4	-	-	-	-	-	-	14
Belgium	1	-	-	-	-	-	-	2	-	24	-	-	-	-	19	-	4	-	-	-	-	-	4	54
Belize	-	-	-	-	-	-	-	-	-	1	-	-	-	-	0	-	-	-	-	-	-	-	-	1
Belarus	-	-	-	-	-	-	-	-	-	7	-	-	-	-	3	-	4	-	-	-	-	-	-	14
Brazil	-	-	-	-	-	-	-	-	-	-	-	-	-	2	5	-	15	-	-	-	-	-	-	22
Brunei	2	-	1	-	-	-	-	-	-	-	-	-	-	-	1	-	-	-	-	-	-	-	-	4
Bulgaria	-	-	-	-	-	-	-	-	-	2	-	-	-	-	4	-	-	-	-	-	-	-	1	7
Canada	2	1	5	-	-	-	-	-	-	26	-	-	-	2	50	-	26	-	-	-	-	-	1	113
Chile	-	-	-	-	-	-	-	-	-	-	-	-	-	-	2	-	-	-	-	-	-	-	-	2
China	-	1	-	-	-	-	-	-	-	21	0	0	0	2	126	-	57	-	-	-	-	-	-	207
Colombia	-	-	-	-	-	-	-	-	-	1	-	-	-	-	-	-	6	-	-	-	-	-	-	7
Croatia	-	-	-	-	-	-	-	-	-	-	-	-	-	-	11	-	-	-	-	-	-	-	-	11
Czech Republic	-	-	-	-	-	-	1	-	-	70	-	-	-	4	36	9	27	-	-	-	-	-	-	147

Country	Cholaitse	Kyazo Ri	Nirekha	Langsisa Ri	Ombigachen	Bokta	Lobuje West	Larkya	ABI	Singuchuli	Mera	Kusum Kanguru	Kwangde	Chulu West	Imja Tse (Island)	Pharchamo	Lobuje	Ramdung	Pisang	Ganjala Chuli ()	Paldor	Hunchuli	Chulu East	Total
Denmark	2	2	-	-	-	-	1	-	-	1	26	-	-	-	44	-	2	-	-	-	-	-	-	78
Dominica Republic	-	-	-	-	-	-	-	-	-	-	-	-	-	-	0	-	1	-	-	-	-	-	-	1
Ecuador	-	-	-	-	-	-	-	-	-	-	-	-	-	-	-	-	1	-	-	-	-	-	-	1
Egypt	-	-	-	-	-	-	-	-	-	-	-	-	-	-	2	-	-	-	-	-	-	-	-	2
Estonia	-	-	-	-	-	-	-	-	-	-	2	-	-	-	-	6	5	-	-	-	-	-	-	13
finland	2	-	-	-	-	-	-	-	-	-	7	-	-	1	4	-	13	-	-	-	-	-	-	27
France	2	7	2	2	-	-	19	4	-	-	164	-	-	9	137	15	68	1	2	-	2	36	468	
Gabon	-	-	-	-	-	-	-	-	-	-	-	-	-	-	-	-	1	-	-	-	-	-	-	1
Georgia	-	-	-	-	-	-	-	-	-	-	-	-	-	-	1	-	1	-	-	-	-	-	-	2
Germany	-	1	8	-	-	-	1	9	-	1	191	1	2	7	209	13	67	-	-	3	-	7	520	
Greece	-	-	-	-	-	-	2	-	-	-	1	-	-	1	21	-	2	-	-	-	-	-	-	27
Hongkong	-	-	-	-	-	-	-	-	-	-	5	-	-	-	7	-	4	-	-	-	-	-	-	16
Hungary	-	-	-	-	-	-	-	-	-	2	2	-	-	-	20	-	6	-	-	-	-	-	-	28
Iceland	-	-	-	-	-	-	-	-	-	-	-	-	-	-	21	-	1	-	-	-	-	-	-	22
India	-	-	2	-	-	-	3	-	-	-	36	-	-	3	70	-	63	-	1	-	-	1	179	
Indonesia	-	-	-	-	-	-	-	-	-	2	2	-	-	-	19	-	2	-	-	-	-	-	-	23
Iran	-	-	-	-	-	-	-	-	-	16	16	-	-	-	27	-	0	-	-	-	-	-	-	43
Ireland	1	1	-	-	-	-	-	-	-	14	14	-	-	-	57	1	8	-	-	-	-	-	-	82
Israel	-	-	-	-	-	-	-	4	-	12	12	-	-	-	29	-	3	-	-	-	-	-	-	48
Italy	2	2	-	-	-	-	-	-	-	49	49	-	-	10	26	11	24	-	1	9	-	-	5	139

Country	Cholaitse	Kyazo Ri	Nirekha	Langsisa Ri	Ombigaichen	Bokta	Lobuje West	Larkya	ABI	Singuchuli	Mera	Kusum Kanguru	Kwange	Chulu West	Imja Tse (Is-land)	Pharchamo	Lobuje	Ramdung	Pisang	Ganjala Chuli ()	Paldor	Hunchuli	Chulu East	Total
Japan	-	2	-	-	-	-	3	3	-	25	-	-	-	3	39	7	19	-	3	-	-	-	12	116
Jordan	-	-	-	-	-	-	-	-	-	-	-	-	-	-	2	-	-	-	-	-	-	-	-	2
Kazakhstan	-	4	-	-	-	-	-	-	-	14	-	-	-	-	-	-	1	-	-	-	-	-	-	19
Kenya	-	-	-	-	-	-	-	-	-	6	-	-	-	-	-	-	-	-	-	-	-	-	-	6
Kosovo	-	-	-	-	-	-	-	-	-	-	-	-	-	-	-	-	2	-	-	-	-	-	-	2
Kuwait	-	-	-	-	-	-	-	-	-	-	-	-	-	-	10	-	-	-	-	-	-	-	-	10
Kyrgyzstan	-	-	-	-	-	-	-	-	-	1	-	-	-	-	1	-	-	-	-	-	-	-	-	2
Latvia	-	-	-	-	-	-	-	-	-	1	-	-	-	-	2	-	-	-	-	-	-	-	-	3
Libya	-	-	-	-	-	-	-	-	-	1	-	-	-	-	1	-	-	-	-	-	-	-	-	2
Lithuania	-	-	-	-	-	-	-	-	-	2	-	-	-	-	10	-	2	-	-	-	-	-	-	14
Luxembourg	-	-	-	-	-	-	-	-	-	-	-	-	-	-	1	-	-	-	-	-	-	-	-	1
Macedonia	-	-	-	-	-	-	-	-	-	3	-	-	-	-	1	-	-	-	-	-	-	-	-	4
Malaysia	-	-	-	-	-	-	-	-	-	13	-	-	-	2	30	-	7	-	-	-	-	-	-	52
Mexico	-	-	-	-	-	-	-	-	-	-	-	-	-	-	15	-	2	-	-	-	-	-	-	17
Morocco	-	-	-	-	-	-	-	-	-	-	-	-	-	-	-	-	2	-	-	-	-	-	-	2
Nepal	1	1	-	-	-	-	2	-	-	21	-	-	-	1	23	1	14	1	-	-	-	-	2	67
Netherlands	1	1	-	-	-	-	-	-	-	31	-	-	-	1	19	-	7	-	-	-	-	-	3	63
New Zealand	-	1	-	-	-	-	1	-	-	28	-	-	-	-	30	1	9	-	-	-	-	-	-	70
North Korea	-	-	-	-	-	-	-	-	-	3	-	-	-	-	-	-	-	-	-	-	-	-	-	3
Norway	-	2	-	-	-	-	9	-	-	5	-	-	-	2	75	4	21	-	-	-	-	-	1	119
Oman	-	-	-	-	-	-	-	-	-	0	-	-	-	-	1	-	-	-	-	-	-	-	-	1

Country	Cholaitse	Kyazo Ri	Nirekha	Langsisa Ri	Ombigaichen	Bokta	Lobuje West	Larkya	ABI	Singuchuli	Mera	Kusum Kanguru	Kwande	Chulu West	Imja Tse (Is-land)	Pharchamo	Lobuje	Ramdung	Pisang	(Ganjala Chuli)	Paldor	Hunchuli	Chulu East	Total
Pakistan	-	-	-	-	-	-	-	-	-	2	-	-	-	-	1	-	-	-	-	-	-	-	-	3
Paraguay	-	-	-	-	-	-	-	-	-	-	-	-	-	-	-	-	1	-	-	-	-	-	-	1
Peru	-	-	-	-	-	-	-	-	-	1	-	-	-	-	1	-	1	-	-	-	-	-	-	3
Philippines	-	-	-	-	-	-	-	-	-	-	-	-	-	-	7	1	-	-	-	-	-	-	-	8
Poland	-	1	-	-	-	-	11	-	-	36	-	-	-	1	148	-	25	-	-	-	-	-	2	224
Portugal	-	-	-	-	-	-	1	-	-	1	-	-	-	-	4	-	-	-	-	-	-	-	-	6
Qatar	-	-	-	-	-	-	-	-	-	-	-	-	-	-	2	-	1	-	-	-	-	-	-	3
Romania	-	-	-	-	-	-	-	-	-	9	-	-	-	-	28	-	15	-	-	-	-	-	-	52
Russia	-	7	-	-	-	-	-	-	-	121	-	-	-	2	105	1	29	-	-	13	-	-	5	283
Saudi Arabia	-	-	-	-	-	-	-	-	-	3	-	-	-	-	2	-	-	-	-	-	-	-	-	5
Serbia	-	-	-	-	-	-	-	-	-	1	-	-	-	-	6	-	-	-	-	-	-	-	1	8
Singapore	-	-	-	-	-	-	-	-	-	13	-	-	-	-	31	-	10	-	2	-	-	-	-	56
Slovakia	-	-	-	-	-	-	-	-	-	21	-	-	-	-	6	4	1	-	-	-	-	-	-	32
Slovenia	-	-	-	-	-	-	-	-	-	13	-	-	-	-	11	2	1	-	-	-	-	-	-	27
South Africa	1	-	-	-	-	-	-	-	-	2	-	-	-	-	16	-	6	-	-	-	-	-	1	26
South Korea	-	-	-	-	-	-	4	-	-	24	-	-	-	1	27	-	1	-	-	12	-	-	-	69
Spain	1	2	3	-	-	-	7	8	-	82	-	-	9	123	17	45	-	4	-	-	-	6	-	307
Sweden	1	-	-	-	-	-	-	-	-	7	-	-	-	-	29	1	20	-	-	-	-	-	-	58
Switzerland	5	5	-	-	-	-	-	3	-	64	-	-	1	125	1	26	-	7	-	-	-	3	-	240
Taiwan	-	1	-	-	-	-	-	-	-	9	-	-	-	-	37	-	1	-	-	-	-	-	-	48
Thailand	-	4	-	-	-	-	6	-	-	13	-	-	-	1	29	-	4	-	1	-	-	-	-	58
Tunisia	-	-	-	-	-	-	-	-	-	-	-	-	-	-	2	-	-	-	-	-	-	-	-	2

Country	Cholaitse	Kyazo Ri	Nirekha	Langsisa Ri	Ombigaichen	Bokta	Lobuje West	Larkya	ABI	Singuchuli	Mera	Kusum Kanguru	Kwande	Chulu West	Imja Tse (Is-land)	Pharchamo	Lobuje	Ramdung	Pisang	Ganjala Chuli ()	Paldor	Hunchuli	Chulu East	Total
Turkey	-	-	-	-	-	-	-	-	-	-	-	-	-	-	2	-	-	-	-	-	-	-	-	2
U.A.E.	-	-	-	-	-	-	-	-	-	1	-	-	-	-	1	-	1	-	-	-	-	-	-	3
Ukraine	-	-	-	6	-	-	-	-	-	43	-	-	-	-	48	-	5	-	-	1	-	-	-	103
Uruguay	-	-	-	-	-	-	-	-	-	-	-	-	-	-	2	-	-	-	-	-	-	-	-	2
United Kingdom	3	6	1	2	-	-	13	-	1	194	-	-	-	3	217	6	68	3	-	5	-	-	14	536
United States	12	2	1	1	1	-	6	1	-	66	1	1	-	3	189	0	122	-	-	-	1	6	412	
Vietnam	-	-	-	-	-	-	-	-	-	9	-	-	-	-	1	-	1	-	-	-	-	-	1	12
Total	42	56	22	11	1	4	94	54	12	2	1,728	2	2	73	2,639	130	966	7	22	49	1	2	118	6,037

Source: Nepal Mountaineering Association(NMA)

TABLE 5.12: ROYALTY RECEIVED BY PEAK, 2019

S.N	Peak	Group	Pax	Royalty (US\$)
1	Chola tse	13	42	5,768.00
2	Kyazo Ri	17	56	9,143.00
3	Pharilapcha	-	-	-
4	Nirekha	8	22	4,195.00
5	Langsisa Ri	3	11	1,625.00
6	Ombigaichen	1	1	250.00
7	Bokta	1	4	1,000.00
8	Chekigo	-	-	-
9	Lobuje West	22	94	16,071.00
10	Laarkya	15	54	8,125.00
11	ABI	1	12	1,500.00
12	Yubra Himal	-	-	-
13	Singu Chuli	2	2	400.00
14	Hiunchuli	1	2	500.00
15	Mera	427	1728	285,055.00
16	Kusum Kanguru	1	2	250.00
17	Kwangde	1	2	250.00
18	Chulu West	35	73	12,398.00
19	Chulu East	47	118	25,789.00
20	Imja Tse (Island)	713	2639	455,977.00
21	Phaarchamo	36	130	17,588.00
22	Lobuje	264	966	186,180.00
23	Ramdung	3	7	786.00
24	Pisang	13	22	3,475.00
25	Ganjala Chuli (Naya Khang)	8	49	5,410.00
26	Khongma Tse (Mehara)	-	-	-
27	Paldor	1	1	250.00
	Total	1633	6037	1,041,985.00

Source: Nepal Mountaineering Association (NMA)



Nepal is famous destination for pilgrimage due to its prominent, glorious and prideful historical and sacred places. Lumbini, being birth place of Lord Buddha and Pashupatinath, a centre of faith for Hinduism is major among many important places. Lumbini is found as most visited pilgrimage by foreigners. It was visited by 1,779,086 persons out of them 78.76% were Nepalese while 11.51% Indians and 9.73 % from other countries. Similarly, the 171,937 visitors form third country visited the Pashupatinath during the year 2019.

PART VI

PILGRIMAGE

**TABLE 6.1: VISITORS (EXCLUDING INDIANS CITIZEN) TO PASHUPATI AREA
BY MONTH, 2013-2019**

Month	2013	2014	2015	2016	2017	2019	2019
January	10298	8592	9148	5960	6673	8045	9030
February	9778	12705	13167	6207	7503	10711	11525
March	14369	15066	14652	6463	11067	16073	22250
April	19101	17178	15777	8567	14204	22255	17890
May	12855	10266	1685	8447	8506	11214	10145
June	5973	5590	1786	7413	4319	5837	6335
July	5043	8444	3476	5604	4752	6729	5842
August	9993	12556	2501	5375	7053	10658	13921
September	9131	14758	4998	8047	9835	12131	13051
October	21473	28428	3994	13091	22709	27150	25287
November	24881	21997	4197	12918	18814	21926	22840
December	13963	10593	3299	7319	8745	10582	13821
Total	156,858	166173	78680	95411	124180	163311	171937

Source: Pashupati Area Development Trust

TABLE 6.2: INDIAN VISITORS TO LUMBINI BY MONTH, 2011-2019

Month	2011	2012	2013	2014	2015	2016	2017	2019	2019
January	2827	8678	3608	6169	6942	2835	18354	12988	19168
February	3478	4263	3213	5900	6215	3580	10577	11107	12041
March	4737	3275	11693	6425	7932	5190	9721	18986	17059
April	3753	63266	73041	70267	77614	24975	13497	16909	11643
May	8386	6099	19144	10092	8595	24233	16677	11829	23377
June	4889	4222	5886	6998	3506	12380	10693	19808	19166
July	2691	1713	2186	3393	2873	5127	7055	7544	7844
August	2683	2607	3039	4093	1472	4313	3913	7427	8457
September	3467	3297	3066	5300	701	5360	6641	8851	8341
October	5949	5512	6141	8334	1763	9076	15985	16908	20909
November	12778	9022	9024	16142	8109	28280	23233	28629	29568
December	8071	8629	10211	11103	4468	8920	19098	31424	27252
Total	63709	120583	150252	154216	130262	134269	155444	192410	204825

Source: Lumbini Development Trust

**TABLE 6.3: COUNTRY-WISE VISIT TO BIRTH PLACE OF LORD BUDDHA,
LUMBINI (except Indian citizens), 2016 to 2019**

Month	2011	2012	2013	2014	2015	2016	2017	2018	2019
January	7613	6591	9371	8397	10300	6970	8846	9714	13619
February	17712	20045	17869	17990	17965	19913	23118	19795	25868
March	19785	20519	22581	20109	23289	21444	28511	29061	29400
April	5666	8295	7101	6879	7953	5245	6092	8023	8650
May	1885	1316	3654	2563	740	3106	2639	2707	3228
June	1120	1366	3552	2125	204	1585	1392	1979	2390
July	2881	2651	3621	2735	1506	2929	2457	2850	3376
August	16867	17924	9685	14154	13317	18007	13032	19279	14738
September	7915	7955	7351	8067	4461	10941	8701	12095	8627
October	14892	13099	13610	16458	10860	15568	16596	18218	18577
November	20000	21740	16483	21111	22136	19094	19041	27292	26772
December	11923	14566	10618	12793	16449	11451	15389	18167	17838
Total	128259	136067	125496	133308	129180	136253	145814	169180	173083

Source: Lumbini Development Trust.

**TABLE 6.3: COUNTRY-WISE VISIT TO BIRTH PLACE OF LORD BUDDHA,
LUMBINI (except Indian citizens), by 2019**

S.N.	Country	Jan.	Feb.	Mar.	April	May	June	July	Aug.	Sept.	Oct.	Nov.	Dec.	Total
1	Sri Lanka	432	6995	9762	1046	37	129	838	12516	5544	5205	4473	530	47507
2	Myanmar	3312	4872	6292	2363	53	23	41	15	31	3302	6012	4475	30791
3	Thailand	3531	6208	4668	746	237	229	301	165	232	2359	5028	4660	28364
4	China	1935	2619	2326	1821	1442	905	1039	721	987	1728	2867	2879	21269
5	Vietnam	266	1033	1079	238	70	160	150	36	546	1709	2130	928	8345
6	S. Korea	1548	867	1086	112	94	80	59	84	119	708	674	714	6145
7	Germany	142	347	518	384	260	75	74	90	165	554	530	167	3306
8	Taiwan	351	430	320	113	34	11	89	38	81	223	468	465	2623
9	Japan	308	447	241	121	71	21	27	107	86	164	200	263	2056
10	U.S.A.	189	210	340	161	94	138	57	39	76	252	340	151	2047
11	France	129	153	259	283	77	47	75	121	79	310	359	125	2017
12	Malaysia	73	145	244	99	94	43	23	13	46	132	506	567	1985
13	Netherlands	100	120	498	141	40	15	49	171	69	299	195	118	1815
14	U.K.	114	94	280	192	71	86	94	123	141	203	302	90	1790
15	Australia	228	170	202	111	120	24	62	39	49	246	150	157	1558
16	Indonesia	69	200	102	30	6	91	84	21	60	58	529	170	1420
17	Singapore	10	21	198	16	16	36	8	6	21	95	325	357	1109
18	Italy	62	52	98	59	27	10	22	129	33	156	169	130	947
19	Bhutan	386	31	9	27	33	71	8	3		19	43	316	946
20	Cambodia	35	302	80	23	6	4	1		6	68	384		909
21	Spain	32	31	62	53	25	23	102	178	52	98	109	68	833

S.N.	Country	Jan.	Feb.	Mar.	April	May	June	July	Aug.	Sept.	Oct.	Nov.	Dec.	Total
22	Canada	51	68	62	54	30	6	42	3	16	73	92	38	535
23	Russia	47	54	32	45	46	11	9	7	15	86	73	60	485
24	Belgium	14	28	49	67	15	5	16	7	9	68	162	27	467
25	Poland	3	23	31	15	23	2	1	29	7	56	83	27	300
26	Switzerland	8	15	19	30	18	14	7	2	33	39	43	23	251
27	Hong Kong	10	5	30	8	6	12	24	1	8	8	98	36	246
28	Austria	17	33	41	7	2	3	3	3	9	29	22	19	188
29	Norway	10	28	23	18	4	3	5	8	2	36	27	3	167
30	Denmark	6	19	40	17	12		1	1	10	26	21	4	157
31	Newzeland	20	6	25	21	3	5	3	3	15	23	22	10	156
32	Brazil	30	12	13	8	8	7		2	6	6	30	12	134
33	Laos				1		8				16	35	58	118
34	Hungary	4	13	20	6	3	2	2			45	8	2	105
35	Portugal	24	8	17	9	4	6	2		6	6	13	9	104
36	Chile	2	15	6	13	17	8	10	1	15	1	8	5	101
37	Other	121	194	328	192	130	77	48	56	53	171	242	175	1787
	Total	13619	25868	29400	8650	3228	2390	3376	14738	8627	18577	26772	17838	173083

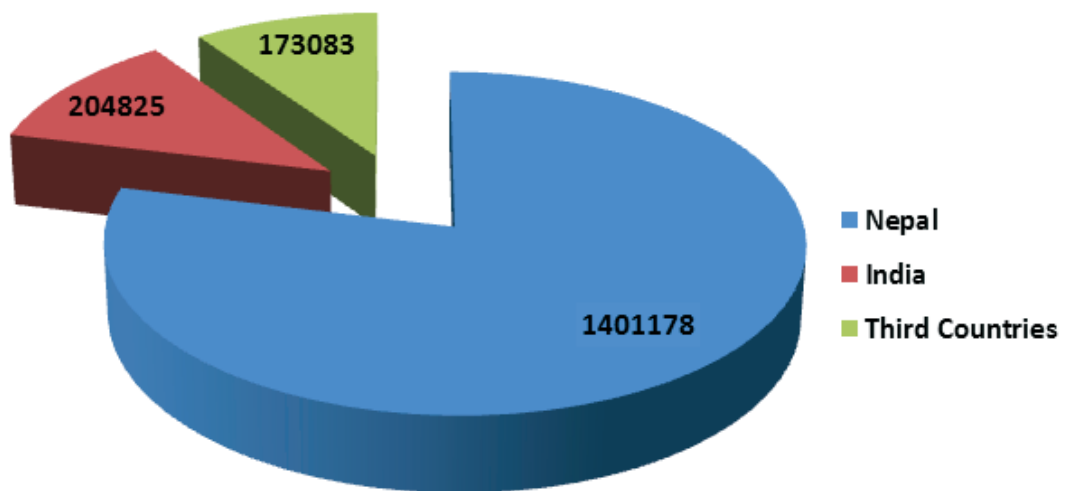
Source: Lumbini Development Trust

TABLE 6.4: SUMMARY OF VISITORS BY BROAD ORIGIN IN LUMBINI BY MONTH, 2019

S.N.	Country	Jan.	Feb.	Mar.	April	May	June	July	Aug.	Sept	Oct.	Nov.	Dec.	Total
1	Nepal	110300	88234	86743	247726	154707	52664	30291	32154	22753	104225	127139	121204	1401178
2	India	19168	12041	17059	11643	23377	19166	7844	8457	8341	20909	29568	27252	204825
3	Third Countries	13619	25868	29400	8650	3228	2390	3376	14738	8627	18577	26772	17838	173083
	Total	143087	126143	133202	268019	181312	74220	41511	55349	39721	143711	183479	166294	1779086

Source: *Lumbini Development Trust.*

Chart 6.1 Visitors distribution of Lumbini by broad country origin, 2019







Tourism sector earnings for 2019 stood at Nrs. 811,257,46 thousand, (Around 724,337 thousand US\$). This is almost 16 % higher than previous year 2018 in USD. Per day expenditure slightly increased (48 USD/tourist/day) in 2019.

**PART
VII**

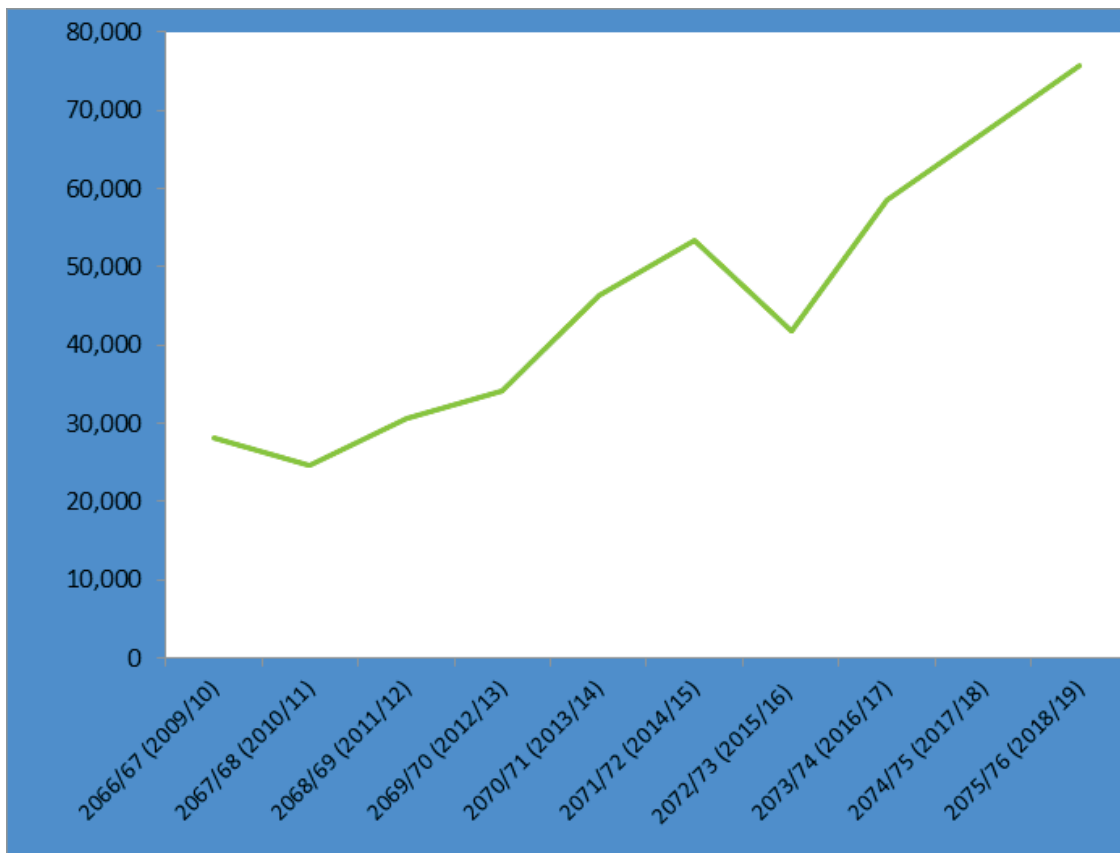
INCOME GENERATION

TABLE 7.1: GROSS FOREIGN EXCHANGE EARNINGS FROM TOURISM BY FISCAL YEAR, 2057/58 TO 2076/77*

Fiscal Year	Total Earnings (Net received)			%Change in US\$
	NRs.(million)	Annual Average Exchange Rate	US\$ (million)	
2057/58 (2000/01)	11,717.0		158.7	
2058/59 (2001/02)	8,654.3	-	109.7	-30.9
2059/60 (2002/03)	11,747.7	-	151.0	37.6
2060/61 (2003/04)	18,147.4	-	245.9	62.9
2061/62 (2004/05)	10,464.0	71.76	145.2	-41.0
2062/63 (2005/06)	9,556.0	72.03	132.1	-9.0
2063/64 (2006/07)	10,125.0	70.19	143.6	8.7
2064/65 (2007/08)	18,653.0	64.72	286.9	99.7
2065/66 (2008/09)	27,960.0	76.58	363.7	26.8
2066/67 (2009/10)	28,139.0	74.24	377.5	3.8
2067/68 (2010/11)	24,611.0	72.07	340.4	-9.8
2068/69 (2011/12)	30,703.8	81.02	379.0	11.3
2069/70 (2012/13)	34,210.6	87.96	388.9	2.6
2070/71 (2013/14)	46,374.9	98.21	472.2	21.4
2071/72 (2014/15)	53,428.8	99.49	544.1	15.2
2072/73 (2015/16)	41,765.4	106.35	392.7	-27.8
2073/74 (2016/17)	58,526.9	106.21	551.0	40.3
2074/75 (2017/18)	67,094.6	104.37	642.9	16.7
2075/76 (2018/19)	75808.56		670.6	4.3
2076/77 (2019/20)*	42736.91		375.7	

Source: Nepal Rastra Bank. * 1st six month of FY 2076/77

CHART 7.1: GROSS FOREIGN EXCHANGE EARNINGS FROM TOURISM



**TABLE 7.2: FOREIGN EXCHANGE EARNINGS
FROM TOURISM, 2000/01-2018/19**

Year	Total Foreign Exchange Earning from Tourism (Rs. in millions)	As % of Total Value of Merchandise Exports	As % of Total Value of Exports of Goods & Non Factor Services	As % of Total Foreign Exchange Earnings	As % of GDP
2000/01	11,717.0	16.8	11.8	5.8	2.7
2001/02	8,654.3	14.9	10.6	4.8	1.9
2002/03	11,747.7	23.1	15.2	6.1	2.4
2003/04	18,147.4	32.9	20.3	8.2	3.4
2004/05	10,464.0	17.5	12.2	4.7	1.8
2005/06	9,556.0	15.5	10.9	3.6	1.5
2006/07	10,125.0	16.5	10.8	3.8	1.4
2007/08	18,653.0	30.1	17.9	5.6	2.3
2008/09	27,960.0	40	22.8	6.5	2.8
2009/10	28,139.0	44.5	24.6	6.0	2.4
2010/11	24,611.0	35.8	20.2	4.9	1.8
2011/12	30,703.8	37.7	20	4.5	1.8
2012/13	34,210.6	39.8	18.9	4.5	2
2013/14	46,374.9	45.9	20.5	4.7	2.4
2014/15	53,428.8	54.4	21.6	4.9	2.5
2015/16	41,765.4	55.8	19.6	3.7	1.9
2016/17	58,526.9	71.3	24.3	4.5	2.3
2017/18	67,094.6	71.9	24.8	9.9	2.2
2018/19	75,808.6			11.2	
2019/20*	42,736.9			6.3	

Source: Nepal Rastra Bank, *1st six month of FY 2076/77

**TABLE 7.4: SOME ECONOMIC INDICATORS OF HOTEL AND RESTAURANT (NSIC CATEGORY) BY FY
2068/69 to 2075/76P**

Economic Indicators	2068/69 2011/12	2069/70 2012/13	2070/71 2013/14	2071/72 2014/14	2072/73 2015/16	2073/74 2016/17	2075/76 2017/18	2075/76 2019/19P
Annual Growth Rate at constant price, 2058/59 (in percentage)	7.38	5.50	6.77	3.33	-9.68	7.33	9.77	8.33
Gross Output at current price (Rs in millions)	82634	95080	108943	120407	129634	146190	175236	196392
Intermediate Consumption at current price (Rs in millions)	57327	65194	73634	79928	88175	98462	119557	133575
Gross Value Added at current price, 2058/59 (Rs in millions)	25307	29886	35309	40479	41459	47728	55679	62816
Gross Value Added at constant price (Rs in millions)	11000	11605	12391	12804	11564	12415	13624	14759
Proportion of Gross Domestic Product at current price (%)	1.76	1.89	1.94	2.05	2.00	1.98	2.05	2.05
Gross Domestic Product Deflator	230.05	257.53	284.96	316.16	358.52	384.53	408.68	425.63

P: Preliminary

Source: GoN, Central Bureau of Statistics



Out of 49 airports in Nepal 32 airports are in operations. Seven domestic airports are under construction and 17 are as non-functional.

Thirty international airlines carried 4138764 passengers out of which 2245338 were outbound and 1893426 in-bound by 32425 flights. The number of countries having civil aviation contract reached to 40. There are 19 airlines company for domestic movement.

PART
VIII

FLIGHT AND PASSENGER MOVEMENT

**TABLE 8.1: NUMBER OF INTERNATIONAL FLIGHT AND PASSENGER
MOVEMENT BY MONTH, 2019**

MONTH	FLIGHT MOVEMENT			PASSENGER MOVEMENT			TRANSIT
	DEP	ARR	TOTAL	OUT	IN	TOTAL	
JAN	1439	1440	2879	173336	182108	355444	152
FEB	1249	1250	2499	164792	165233	330025	74
MAR	1361	1358	2719	195539	182881	378420	84
APR	1290	1288	2578	198186	170517	368703	18
MAY	1298	1300	2598	190151	140232	330383	232
JUN	1193	1192	2385	166963	131313	298276	2047
JUL	1266	1266	2532	162890	127778	290668	3580
AUG	1291	1292	2583	171242	133574	304816	2808
SEP	1383	1382	2765	155954	163817	319771	2493
OCT	1529	1531	3060	200025	191815	391840	1370
NOV	1490	1491	2981	243598	155969	399567	1131
DEC	1423	1423	2846	222662	148189	370851	1554
TOTAL	16212	16213	32425	2245338	1893426	4138764	15543

Source: ATSSRO (ATS/SAR Division), Terminal Management Division, Air Cargo Service Division
T.I.A.C.A.O.

TABLE 8.2: NUMBER OF INTERNATIONAL FLIGHT & PASSENGER MOVEMENT, 2011-2019

YEAR	FLIGHT MOVEMENT			PAX MOVEMENT			TRANSIT
	DEP	ARR	TOTAL	OUT	IN	TOTAL	
2011	11394	11398	22792	1292515	1407512	2700027	
2012	11659	11661	23320	1546350	1378825	2925175	342
2013	11807	11812	23619	1647235	1493067	3140302	223
2014	13605	13603	27208	1889448	1622199	3511647	284
2015	13281	13283	26564	1674664	1542498	3217162	329
2016	13560	13558	27118	1823598	1687144	3510742	122
2017	16680	16682	33362	2083150	1804695	3887845	433
2018	16951	16946	33897	2201775	2180458	4382233	951
2019	16212	16213	32425	2245338	1893426	4138764	15543

Source: - Civil Aviation Authority of Nepal

TABLE 8.3: INTERNATIONAL AIRLINES WISE FLIGHT AND PASSENGER MOVEMENT, 2019

S.N	AIRLINES	FLIGHT MOVEMENT			PASSENGER MOVEMENT		
		DEP	ARR	TOTAL	OUT	IN	TOTAL
1	ABY	918	918	1836	115043	113886	228929
2	AIC	930	930	1860	126822	128236	255058
3	BBC	351	351	702	39983	27950	67933
4	BHA	178	179	357	7661	6542	14203
5	BTN	230	230	460	7636	206	7842
6	CCA	488	488	976	43713	42742	86455
7	CES	558	558	1116	51663	51485	103148
8	CSC	207	207	414	17480	13913	31393
9	CSN	730	730	1460	105109	94894	200003
10	DRK	490	490	980	25087	8813	33900

S.N	AIRLINES	FLIGHT MOVEMENT			PASSENGER MOVEMENT		
		DEP	ARR	TOTAL	OUT	IN	TOTAL
11	ETD	422	422	844	53241	49871	103112
12	FDB	955	955	1910	144277	130411	274688
13	H DA	235	235	470	66483	36640	103123
14	HIM	897	898	1795	118976	57416	176392
15	IGO	739	739	1478	109175	51442	160617
16	JAI	380	379	759	53273	49144	102417
17	KAL	179	179	358	35078	35870	70948
18	MAS	380	380	760	50114	45178	95292
19	MXD	682	682	1364	75814	103197	179011
20	OMA	622	622	1244	79268	67201	146469
21	QTR	1366	1366	2732	236410	225629	462039
22	NAC	2196	2194	4390	379607	356228	735835
23	SLK	352	352	704	47473	41178	88651
24	THA	365	365	730	91818	78005	169823
25	THY	285	285	570	66930	14395	81325
26	OTHERS	177	178	355	5111	161	5272
TOTAL	15312	15312	30624	2153245	1830633	3983878	

Source: - Civil Aviation Authority of Nepal

LEGEND : ABY - Air Arabia, AIC - Air India, BBC- Biman Bangladesh Airlines, BHA - Buddha Air, BTN - Bhutan Airlines, CCA - Air China, CES- China Eastern Airlines, CSC-Sichuan Airlines, CSN- China Southern Airlines, DRK-Druk Air (Royal Bhutan Airlines) ETD- Etihad Airways, FDB- Fly Dubai , HAD -Cathy Dragon, HIM- Himalaya Airlines, IGO- Indigo Air, JAI- Jet Airways, KAL- Korean Air, MAS- Malaysian Air, MXD- Malindo Air, NAC- Nepal Airlines, OMA- Oman Air, QTR- Qatar Airways, RGE-Regent Airways, SLK- Silk Air, TBA- Tibet Airlines, SLK- Silk Air, TBA- Tibet Airlines, THA- Thai Airways, THY - Turkish Airlines, UBG- US Bangla Airlines, WAN-Wataniya, XAX- Air Asia, OTH -Non schedule/Charter

TABLE 8.4: NUMBER OF DOMESTIC FLIGHT & PASSENGER MOVEMENT, 2011-2019

YEAR	FLIGHT MOVEMENT			PASSENGER MOVEMENT		
	DEP	ARR	TOTAL	IN	OUT	TOTAL
2011	39635	39625	79260	796992	796992	1593984
2012	35444	35433	70877	786694	788365	1575059
2013	34544	34532	69076	769100	773504	1542604
2014	34270	34266	68536	728857	721701	1450558
2015	32944	32921	65865	683130	680918	1364048
2016	36938	36938	73876	880895	876701	1757596
2017	46563	46534	93097	1250102	1138481	2388583
2018	47788	47779	95567	1472082	1375704	2847786
2019	47307	47396	94640	1711753	1595247	3307000

TABLE 8.5: NUMBER OF DOMESTIC FLIGHT & PASSENGER MOVEMENT BY MONTH, 2019

MONTH	FLIGHT MOVEMENT			PASSENGERS		
	DEP	ARR	TOTAL	OUT	IN	TOTAL
JAN	3378	3380	6758	126227	117904	244131
FEB	3188	3184	6372	116456	109756	226212
MAR	4146	4125	8271	138436	126109	264545
APR	3986	4000	7986	130085	120530	250615
MAY	3934	3930	7864	127061	118788	245849
JUN	3297	3299	6596	128471	121982	250453
JUL	4481	4581	8999	189102	181881	370983
AUG	3616	3615	7231	141189	132996	274185
SEP	4015	4009	8024	150173	134029	284202
OCT	5015	5014	10029	171693	154304	325997
NOV	4622	4632	9254	155468	147397	302865
DEC	3629	3627	7256	137392	129571	266963
TOTAL	47307	47396	94640	1711753	1595247	3307000

Source :- Civil Aviation Authority of Nepal

**TABLE 8.6: NUMBER OF DOMESTIC FLIGHT & PASSENGER
MOVEMENT BY DOMESTIC AIRLINES, 2019**

S.N	AIRLINE	FLIGHT MOVEMENT			PAX		
		DEP	ARR	TOTAL	OUT	IN	TOTAL
1	AA	734	735	1469	2172	2699	4871
2	AD	1419	1419	2838	3376	3284	6660
4	BHA	16454	16454	32908	823790	767612	1591402
5	FA	63	63	126	200	239	439
6	HE	702	702	1404	1787	2376	4163
7	KH	885	884	1769	2156	2379	4535
8	MA	612	610	1222	1827	2111	3938
9	MH	217	270	541	810	812	1622
10	MU	396	394	790	819	1074	1893
11	NAC	1716	1716	3432	41035	33201	74236
12	NSB	702	702	1404	0	0	0
13	NYT	9949	9949	19898	434908	399034	833942
14	RMK	1027	1027	2054	15656	12490	28146
15	S1	858	858	1716	39808	38579	78387
16	SH	378	379	757	1042	1127	2169
17	SHA	4379	4379	8758	242088	232981	475069
18	SM	1413	1413	2826	3762	4122	7884
19	STA	690	690	1380	7414	7067	14481
20	TRA	1592	1593	3185	17475	15697	33172
21	VVIP	68	68	136	0	0	0
22	OTHERS	21	23	44	16	11	27
TOTAL		44275	44328	88657	1640141	1526895	3167036

Source : - ATSTRO (ATS/SAR Division), Domestic T.D.O., Revenue Section (Domestic), T.I.A.C.A.O.

LEGEND : AA - Altitude Air, AD - Air Dynasty Heli Service, BHA - Buddha Air, FA - Fishtail Air, HE - Heli Everest Pvt. Ltd, MA - Manang Air, MH – Mountain Helicopter Pvt. Ltd, MU - Prabhu Helicopter Pvt. Ltd., NAC - Nepal Airlines, NSB - Madhaya Airbase, N(T - Yeti Airlines, RMK - Simrik Airlines, S1 - Saurya Airlines, SHA - Shree Airlines, SM - Simrik Air, SMA - Summit Air Pvt.Ltd, STA - Sita Air, TRA - Tara Air, VVI - VV&P Flight,

TABLE 8.7: NUMBER OF PARAGLIDING IN POKHARA BY MONTHS, 2015-2019

Month	2015			2016			2017			2018			2019		
	Nepali	Foreigner	Total	Nepali	Foreigner	Total	Nepali	Foreigner	Total	Nepali	Foreigner	Total	Nepali	Foreigner	Total
January	366	935	1301	530	870	1400	630	860	1490	700	905	1605	850	1507	2357
February	465	822	1287	1040	1040	1370	432	1050	1482	521	1103	1624	575	2594	3169
March	411	911	1322	1020	1020	1420	405	1020	1425	505	1139	1644	650	2780	3430
April	468	913	1581	1040	1040	1360	310	1045	1355	352	1062	1414	501	1810	2311
May	224	90	314	1146	1146	1581	485	1155	1640	551	1307	1858	602	2191	2793
June	103	36	139	1350	1350	1555	205	1330	1535	291	1339	1630	305	1834	2139
July	135	38	173	980	980	1230	260	1020	1280	360	1107	1467	376	1755	2131
August	187	152	239	1360	1360	1720	380	1330	1710	489	1430	1919	525	1651	2176
September	236	210	446	1509	1509	1874	355	1517	1872	555	1531	2086	689	2103	2792
October	243	495	1238	1640	1640	2120	510	1647	2157	607	1632	2239	705	2970	3675
November	307	534	841	1340	1340	1940	605	1380	1985	644	1489	2133	773	2245	3018
December	162	556	718	1130	1130	1430	310	1030	1340	344	1054	1398	550	1981	2531
Total	3307	5692	8999	4675	14666	19341	4887	14384	19271	5919	15098	21017	7101	25421	32522

Source: Nepal Air Sports Association, Pokhara



Tourism sector of Nepal is managed with partnership of Government, private sector, households, professionals and NGOs. Tourism industries play pivotal roles in tourist service, service management, increasing revenue.

Hotel industry in Nepal is providing quality service to the travelers. It is a increasing sector in Nepal. Major international chain Hotels are also operating in Nepal in recent time. There are 1289 star and tourist standard hotels registered and operation in Nepal till 2019 with bed capacity of 43999 beds per day. Travel agency, tour guide, tour operators, rafting agencies, trekking agencies and guides all are in increasing trend. In 2019 the number of registered Travel agencies reached up to 3680 and Trekking agencies are 2764.

PART
IX

TOURISM INDUSTRY

TABLE 9.1: TOURIST STANDARD HOTEL REGISTERED IN NEPAL

Year	Star Hotel		Tourist Standard Hotel		Total	
	Hotel	Bed	Hotel	Bed	Hotel	Bed
2061	110	10715	886	28392	996	39107
2062	110	10715	896	28669	1006	39384
2063	105	9763	502	14497	607	24260
2064	105	9763	512	14897	617	24660
2065	96	9320	573	16743	669	26063
2066	97	9369	647	19124	744	28493
2067	103	9125	686	20517	789	29342
2068	106	9323	721	21457	827	30780
2069	107	9371	746	22286	853	31657
2070	117	9506	909	25017	1026	34523
2071	118	9554	957	26625	1075	36179
2072	116	9710	957	27240	1073	36950
2073	120	10071	985	28171	1062	38242
2074	125	10697	977	29136	1101	39833
2075	129	11146	1125	29710	1254	40856
2076	138	13200	1151	30799	1289	43999

Source: Department of Tourism

TABLE 9.2: TOURIST INDUSTRIES AND GUIDE IN NEPAL

Year	Travel Agency	Trekking Agency	Rafting Agency	Tourist Transportation Service	Tour Guide	Trekking Guide	River Guide
2069/70	2239	1598	52	31	0	0	100
2070/71	2450	1761	60	50	3141	9741	131
2071/72	2611	1903	61	59	3335	10436	131
2072/73	2768	2019	66	67	3507	11358	187
2073/74	3444	2367	72	72	3717	13049	207
2074/75	3824	2637	73	72	3876	13831	230
2075/76	3508	2649	73	77	4126	16248	253
2076/77	3680	2764	81	82	4200	17625	266

Source: Department of Tourism

TABLE 9.3: REGISTERED HOME STAY, 2017-2019

District	Type	2017			2018			2019		
		No. of Affiliated House	No. of Room	No. of Bed	No. of Affiliated House	No. of Room	No. of Bed	No. of Affiliated House	No. of Room	No. of Bed
Kathmandu	Community	63	99	214	63	99	176	84	110	188
	Private	49	150	206	49	146	238	49	150	206
	Total	112	249	420	112	245	414	133	260	394
Bhaktapur	Community				13	14	28	13	14	28
	Private				4	11	20	4	11	20
	Total				17	25	48	17	25	48
Kavre	Community	49	83	107	61	95	119	61	95	119
	Private	5	16	30	5	9	14	5	9	14
	Total	54	99	137	66	104	133	66	104	133
Lalitpur	Community	12	24	47	15	28	51	15	28	51
	Private	6	15	30	6	15	30	6	15	30
	Total	18	39	77	21	43	81	21	43	81
Mugu	Community	5	5	10	5	5	10	5	5	10
	Private	0	0	0	0	0	0	0	0	0
	Total	5	5	10	5	5	10	5	5	10
Nuwakot	Community	25	33	66	25	33	66	40	48	96
	Private	0	0	0	0	0	0	0	0	0
	Total	25	33	66	25	33	66	40	48	96

District	Type	2017			2018			2019		
		No. of Affiliated House	No. of Room	No. of Bed	No. of Affiliated House	No. of Room	No. of Bed	No. of Affiliated House	No. of Room	No. of Bed
Ramechhap	Community	29	54	96	29	54	96	29	54	96
	Private	2	11	20	1	3	6	1	3	6
	Total	31	65	116	30	57	102	30	57	102
Chitwan	Community	7	14	28	0	0	0	29	36	72
	Private	2	4	6	9	18	34	9	18	34
	Total	9	18	34	9	18	34	38	54	106
Kaski	Community				0	0	0	0	0	0
	Private				2	8	16	2	8	16
	Total				2	8	16	2	8	16
Makwanpur	Community	7	16	30	7	16	30	7	16	30
	Private	0	0	0	1	3	6	1	3	6
	Total	7	16	30	8	19	36	8	19	36
Dhading	Community	5	9	18	9	15	18	9	15	18
	Private	1	4	6	1	4	6	1	4	6
	Total	6	13	24	10	19	24	10	19	24
Udaypur	Community							13	13	18
	Private							0	0	0
	Total							13	13	18
Saptari	Community							7	7	12
	Private							0	0	0
	Total							7	7	12

District	Type	2017			2018			2019		
		No. of Affiliated House	No. of Room	No. of Bed	No. of Affiliated House	No. of Room	No. of Bed	No. of Affiliated House	No. of Room	No. of Bed
Rasuwa	Community									
	Private				1	4	8	1	4	8
	Total				1	4	8	1	4	8
Pyuthan	Community	16	17	34	18	17	34	18	17	34
	Private	0	0	0	0	0	0	0	0	0
	Total	16	17	34	18	17	34	18	17	34
Total	Community	218	354	650	245	376	628	310	438	742
	Private	65	200	298	79	221	378	79	225	346
Total		283	554	948	324	597	1006	389	663	1088

Source: Department of Tourism

TABLE 9.4: MAJOR CIVIL AVIATION INDICATORS, NEPAL

Main Indicator	2016	2017	2018	2019
Number of Nepalese Airlines operating international flight	3	3	3	3
Number of International Airlines operating	26	30	29	29
Number of countries Bilateral agreement for Airlines service	38	38	38	40
Number of total airlines seats*	8000000	8000000	8000000	9000000
Number of Domestic airline Companies in operation(both roter & fixed wings)	19	20	20	19
Number of International Airport	1	1	1	1
Number of Fixed Wings Operation	10	10	10	9
Number of Helicopters operation	9	10	10	10
Number of Aviation Recreation companies	75	74	75	76
Number of Airport operation in all seasons	26	29	31	34
Number of Airport operation	32	32	35	32

Source: Civil Aviation Authority Nepal

*The number of seats is calculated based on B757 (200 seats). Thus no. of seats varies according to size of aircrafts. Air service agreements are done based on weekly frequencies which can utilized by any type of aircrafts.



National Academy of Tourism and Hotel Management (NATHM) is a public institution that develops human resource in tourism sector. In the Year 2019 total 252 students enrolled Bachelor of Hotel Management (BHM) and 168 Bachelor of Travel and Tourism Management (BTM). Similarly, different tourism related Mid-level and supervisor level trainings provided for 2539 persons. Much other private institution provides tourism related academic courses and other professional training, which is not included in this report.



TOURISM EDUCATION

TABLE 10.1: TOURISM AND HOTEL MANAGEMENT RELATED EDUCATION AND TRAININGS, 2067/68-2076/77

SN	Course/Training	067/68	068/69	069/70	070/71	071/72	072/73	073/74	074/75	075/76	076/77
1	Master's in Hospitality Management	0	40	28	25	36	39	40	40	33	0
2	Bachelor's in Hotel Management	80	120	121	125	168	167	168	167	252	252
3	Bachelor's in travel and tourism	81	80	80	84	125	126	126	125	168	168
4	Food preparation and control	67	76	72	146	83	80	70	138	162	42
5	Beverage Service	24	8	15	33	17	13	9	24	53	0
6	House keeping	21	0	0	0	0	0	0	0	0	0
7	Front Office	27	0	0	0	0	0	0	0	0	0
8	Tourist route guide	181	96	163	312	227	201	174	218	323	26
9	Local guide by region	24	35	21	18	11	14	114	148	94	0
10	Trekking route guide	953	698	968	1551	1772	435	800	1654	1175	911
11	Rafting route guide	72	50	34	44	66	47	85	51	66	34
12	Public relations and hospitality Training	141	138	126	221	105	77	171	153	177	149
13	Outreach training	360	137	87	133	613	540	436	146	238	45
14	Home stay management	142	377	0	66	108	0	0	285	263	164
15	Hospitality and food safety standards	0	0	0	0	418	27	0	0	0	0
16	Porter guide	0	0	0	0	0	61	101	181	332	193
17	Hotel Operation guide	0	0	0	0	0	0	0	0	0	43
18	Hospitality Training for Tourist Vehicle Driver	0	0	0	0	0	0	0	0	0	932
Total		2173	1855	1715	2758	3749	1827	2294	3330	3336	2959

Source: NATHAM



TOURIST POLICE NEPAL

Dial

1144

01-4247041



TOURIST POLICE FOR TOURIST SAFETY

policestourist@nepalpolice.gov.np

www.nepalpolice.gov.np

PART
XI

MISCELLANEOUS

TABLE 11.1: TOURIST RELATED ACCIDENT/INCIDENT REPORTED BY MONTH, 2075/76

SN	INCIDENT	Shrawan	Bhadra	Ashoj	Kartik	Mangsir	Paush	Magh	Falgun	Chaitra	Baisakh	Jestha	Ashad	Total
1	Lost/Missing	38	25	49	57	38	39	31	27	43	66	41	27	481
2	Stolen/theft	7	9	12	17	12	11	5	3	6	11	6	3	102
3	Fraud/Cheating	4	0	2	3	2	3	0	0	3	2	5	0	24
4	Robbery	0	0	0	0	0	0	0	0	1	1	0	0	2
5	Pickpocket	0	0	1	1	0	0	0	0	2	1	1	0	6
6	Harrastment/dispute	0	0	1	1	0	0	0	1	0	0	1	0	4
7	Accident	0	0	0	0	0	0	0	0	0	1	0	0	1
8	Damage	0	0	0	1	0	0	0	1	1	0	1	0	4
9	Attack/ Assault	0	0	0	0	0	0	0	0	0	0	0	1	1
10	Snatched	0	0	0	0	0	0	0	0	1	0	0	0	1
11	Threaten	0	0	0	0	0	0	0	0	0	0	0	0	0
12	Rape	0	0	0	0	0	0	0	0	0	0	0	0	0
13	MISBEHAV- IOUR	0	0	0	0	1	0	1	0	0	0	0	0	2
14	kidnap	0	0	0	0	0	0	0	0	0	0	0	0	0
15	Other	1	1	0	0	1	0	0	0	1	0	0	1	5
Total		50	35	65	80	54	53	37	32	58	82	55	32	633

SOURCE: Department of Tourism, Tourist police

TABLE: 11.2 TOURIST RELATED ACCIDENT/INCIDENT REPORTED BY NATIONALITY, 2075/76

S.N.	Nationality	Shrawan	Bhadra	Ashoj	Kartik	Mangsir	Paush	Magh	Falgun	Chaitra	Baisakh	Jestha	Ashad	Total
1	Algerian	0	0	0	0	0	0	0	0	1	0	0	0	1
2	AMERICAN	2	2	4	5	9	0	3	4	3	9	3	1	45
3	AUSTRIA	0	0	0	0	0	0	0	0	1	0	1	0	2
4	ARGENTINA	0	0	0	0	0	0	0	0	4	0	0	0	4
5	AUSTRALIAN	3	0	8	10	7	3	2	3	3	4	3	1	47
7	BANGLADESH	0	3	2	0	1	3	1	0	3	3	0	3	19
8	BELGIUM	0	1	0	1	0	1	2	0	0	3	0	0	8
11	BRAZILIAN	0	0	0	1	0	0	0	0	0	1	0	0	2
12	BRITISH	3	0	3	2	7	3	2	3	4	5	4	2	38
13	BHUTANESE	0	0	1	0	0	0	0		0	0	0	1	2
14	CANADIAN	1	0	1	1	4	0	2	3	2	0	1	1	16
15	CHINESE	15	5	8	12	4	12	5		6	7	4	6	84
16	CHILI	0	0	0	0	0	0	0	1	0	0	1	0	2
18	Congo	1	0	0	0	0	0	0	0	0	0	0	0	1
20	CZECH REPUBLIC	0	0	0	1	0	0	0	0	0	1	14	0	16
21	DANISH	0	0	0	0	0	0	0	0	2	0	1	1	4
23	ESTONIA	0	0	0	0	0	0	1	0	0	0	0	0	1
24	Egyptian	0	0	0	0	0	1	0	0	0	0	0	0	1
25	FRENCH	0	3	3	8	5	3	0	1	4	4	4	0	35
26	Filipinos'	0	0	0	0	0	0	1	0	0	0	0	0	1
27	FINNISH	1	0	0	0	0	2	0	0	0	0	0	0	3
28	Georgia	0	0	0	0	0	0	0	1	0	0	0	0	1
29	GERMAN	0	4	5	5	1	1	3	0	0	6	3	0	28

S.N.	Nationality	Shrawan	Bhadra	Ashoj	Kartik	Mangsir	Paush	Magh	Falgun	Chaitra	Baisakh	Jestha	Ashad	Total
31	Guatemala	0	0	0	0	0	0	1	0	0	0	0	0	1
32	GUINEA	1	0	1	0	1	0	0	0	0	0	0	0	3
34	INDIAN	5	1	3	1	4	6	2	2	6	0	9	10	49
35	INDONESIAN	1	0	0	0	1	0	1	0	0	1	0	0	4
36	IRELAND	0	0	1	0	0	1	0	0	0	0	1	0	3
38	IRANIAN	1	0	0	0	0	0	0	0	0	0	0	0	1
39	ISRAELI	0	1	1	2	1	5	0	1	3	4	0	0	18
40	ITALIAN	1	1	1	4	1	0	1	0	1	1	0	0	11
41	IVORY COAST	1	0	0	0	1	0	0	0	0	0	0	0	2
42	JAPANESE	1	3	5	2	2	4	2	4	3	4	2	0	32
44	KOREAN	1	1	0	0	1	0	1	2	2	2	1	0	11
46	LEBANON	0	0	0	0	0	0	0	0	0	0	0	1	1
47	LITHUANIAN	1	0	0	0	0	0	0	0	0	0	0	0	1
48	HONG KONG	0	0	0	1	0	0	0	0	0	2	0	0	3
49	MALAYSIAN	0	3	0	3	0	0	0	0	2	2	0	0	10
52	MOLDOVA	1	0	0	0	0	0	0	0	0	0	0	0	1
54	Netherland	5	3	2	5	1	3	3	1	2	6	0	0	31
56	NEW ZELAND	0	1	0	2	0	1	0	0	1	2	1	0	8
57	NORWEGIAN	0	0	0	0	0	0	0	2	0	2	0	0	4
58	PAKISTANI	0	0	2	0	0	0	1	0	0	3	0	0	6
59	PORTUGAL	1	0	0	0	0	0	0	0	0	0	0	0	1
60	PHILIPPINES	0	0	0	0	0	0	0	0	0	0	0	1	1
61	POLAND	0	0	0	1	0	1	0	0	1	0	0	0	3
63	PORTUGUESE	0	0	0	1	0	0	0	0	0	0	0	0	1
64	ROMANI	0	0	1	0	0	0	0	1	1	0	0	2	5

S.N.	Nationality	Shrawan	Bhadra	Ashoj	Kartik	Mangsir	Paush	Magh	Falgun	Chaitra	Baisakh	Jestha	Ashad	Total
65	RUSSIAN	0	0	2	1	0	0	0	0	0	1	0	0	4
66	SAUDI	0	0	0	0	0	1	0	1	0	0	0	0	2
67	SERESS	0	0	1	0	0	0	0	0	0	0	0	0	1
68	SENEGAL	0	1	0	0	0	0	0	0	0	0	0	0	1
69	SRILANKA	0	0	3	0	0	0	0	0	0	0	0	0	3
70	SINGAPOREAN	1	0	0	2	2	1	0	2	0	1	0	0	9
71	SPANISH	2	2	4	6	1	0	2	0	3	1	0	1	22
74	SWEDEN	0	0	0	0	0	0	0	0	0	2	0	0	2
75	SWISS	1	0	0	2	0	0	1	0	0	2	0	0	6
76	TAIWAN	0	0	1	0	0	0	0	0	0	0	1	0	2
78	THAILAND	0	0	0	0	0	0	0	0	0	0	1	0	1
80	UZBEKISTAN	0	0	0	0	0	0	0	0	0	1	0	0	1
81	UKRAINIAN	0	0	1	1	0	0	0	0	0	2	0	0	4
84	YEMEN	0	0	1	0	0	1	0	0	0	0	0	1	3
TOTAL		50	35	65	80	54	53	37	32	58	82	55	32	633

SOURCE: Department of Tourism, Tourist police

TABLE: 11.3 TOURIST RELATED ACCIDENT/INCIDENT REPORTED BY GENDER, 2075/76

SN	GENDER	Shrawan	Bhadra	Ashoj	Kartik	Mangsir	Paush	Magh	Falgun	Chaitra	Baisakh	Jestha	Ashad	Total
1	Female	18	12	20	48	17	11	13	9	14	30	21	8	221
2	Male	32	23	45	32	37	42	24	23	44	52	34	24	412
TOTAL		50	35	65	80	54	53	37	32	58	82	55	32	633

SOURCE: Department of Tourism, Tourist police

TABLE: 11.4 BASIS OF INVESTIGATION 2075-076

Month	Shrawan	Bhadra	Ashoj	Kartik	Mangsir	Paush	Magh	Falgun	Chaitra	Baisakh	Jestha	Ashad	TOTAL
CASE SOLVE IN OFFICE	5	1	2	2	2	3	1	2	4	5	2	2	31
MAJOR CASE FORWARDED	1	0	1	1	0	0	0	1	0	1	0	0	5
FORWARDED FOR INVESTIGATION (DOCUMENTATION)	44	34	62	77	52	50	36	29	54	76	53	30	597
TOTAL	50	35	65	80	54	53	37	32	58	82	55	32	633

SOURCE: Department of Tourism, Tourist police

