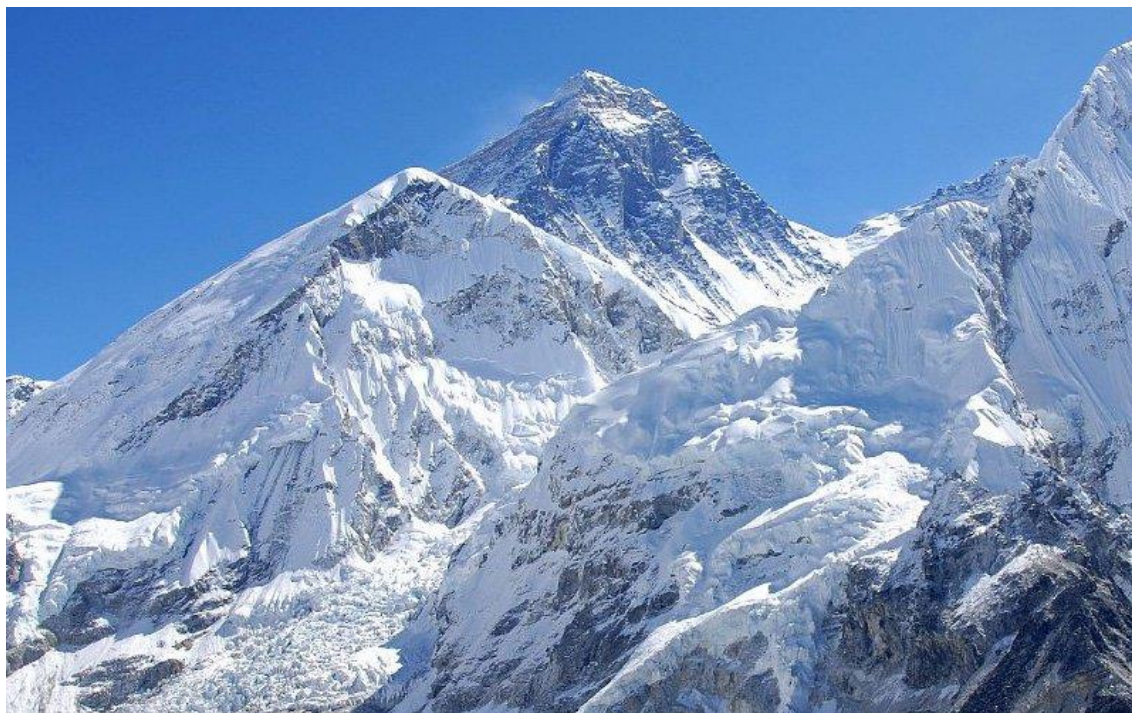
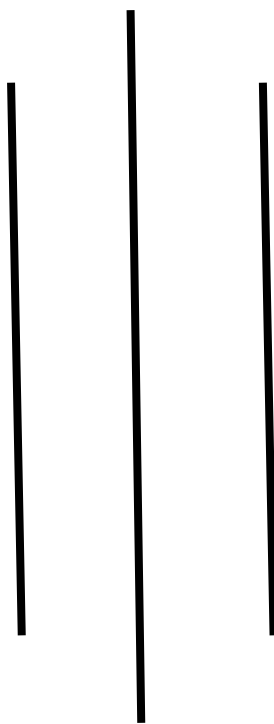


NEPAL TOURISM STATISTICS 2017



Government of Nepal
Ministry of Culture, Tourism & Civil Aviation
Planning & Evaluation Division
Research & Statistical Section
Singha Durbar, Kathmandu
May, 2018

NEPAL TOURISM STATISTICS 2017



Government of Nepal
Ministry of Culture, Tourism & Civil Aviation
Planning & Evaluation Division
Research & Statistical Section
Singha Durbar, Kathmandu
May, 2018

Published Date: May 2018

Number of Copies: 1000

Cover Photo: Mt. Manaslu (8,163 m.)

Copyright @ Ministry of Culture, Tourism & Civil Aviation

Published by:

Ministry of Culture, Tourism & Civil Aviation

Planning & Evaluation Division

Research & Statistical Section

Singha Durbar, Kathmandu

Tel:4211846, 4211685 Ext. 416

Fax: 4211758, 4211672

Email: info@tourism.gov.np

Website: www.tourism.gov.np

Chief Editor

Mr. Dandu Raj Ghimire
Joint Secretary

Editor Team

Mr. Sitaram Ghimire
Under-Secretary (Statistics)

Mr. Nirajan Ghimire
Under-Secretary (Monitoring)

Mr. Dipak Janwali
Under-Secretary (Account)

Mr. Dipak Koirala
Statistical Office

Mr. Pradipraj Poudel
Computer Engineer

CONTENTS

Contents	Page
PART I	1
FACT SHEET 2017	
PART II TOURIST ARRIVALS	7
TABLE 2.1: TOURIST ARRIVAL AND AVERAGE LENGTH OF STAY, 1964-2017	9
TABLE 2.2: TOURIST ARRIVAL BY MONTH, 1992-2017	12
TABLE 2.3: TOURIST ARRIVAL BY MONTH(Excluding Indian Citizens), 1992-2017	15
TABLE 2.4: INDIAN TOURIST ARRIVAL BY MONTH, 1992-2017	17
TABLE 2.5: TOURIST ARRIVAL BY YEAR, 1993-2017	18
TABLE 2.6: TOURIST ARRIVAL BY SEX, 1993-2017	20
TABLE 2.7 : TOURIST ARRIVAL BY AGE GROUPS, 1993-2017	22
TABLE 2.8: TOURIST ARRIVAL BY MAJOR NATIONALITIES, 2003-2017	24
TABLE2. 9: TOURIST ARRIVAL BY NATIONALITIES & MONTH, 2014-2017	26
TABLE 2.10: TOURIST ARRIVAL BY LAND,2017	32
TABLE 2.11: TOURIST ARRIVALS BY COUNTRY AND MONTH (LAND), 2017	33
PART III LENGTH OF STAY	35
TABLE 3.1 TOURIST ARRIVAL AND AVERAGE LENGTH OF STAY, 1964-2017	37
PART IV PURPOSE OF VISIT	39
TABLE 4.1: 2017TOURIST ARRIVAL BY PURPOSE OF VISIT,1993-2017	41
PART IV TREKKING AND EXPEDITION	45
TABLE 5.1: NUMBER OF TREKKERS IN DIFFERENT CONSERVATION AREAS BY MONTH, 2017.	47
TABLE 5.2: TREKKERS IN DIFFERENT TREKKING AREAS, 2001-2017	48
TABLE 5.3: NUMBER OF TREKKERS IN DIFFERENT TREKKING AREAS BY MONTH, 2017.	49
TABLE 5.4: NUMBER OF FOREIGNERS VISITED TO PROTECTED AREAS BY MONTH, FY 2072/73	50
TABLE 5.5 : NUMBER OF FOREIGN VISITORS TO NATIONAL PARKS & PROTECTED AREAS, 2010-2017	51
TABLE 5.6: TREND OF ROYALTY RECEIVED (NRs) FROM FOREIGNERS VISITED TO PROTECTED AREAS, FY68/69 TO 2072/73	52

TABLE 5.7: NUMBER OF EXPEDITION MEMBERS & SUMMITEERS BY PEAK, 2017	55
TABLE 5.8: NUMBER OF CLIMBERS BY COUNTRY, 2017	58
TABLE 5.9: NUMBER OF EXPEDITION TEAMS & ROYALTY BY PEAKS, 2017	64
TABLE 5.10: NUMBER OF TEAMS, CLIMBERS, & ROYALTY BY PEAK, 2017 (Permit Issued By Nepal Mountaineering Association)	67
TABLE 5.11: ROYALTY RECEIVED BY PEAK, 2017 (Permit Issued By Nepal Mountaineering Association)	71
PART VI PILGRIMAGE	73
TABLE 6.1: VISITORS (EXCLUDING INDIAN CITIZENS) TO PASUPATI ,2011-2017	75
TABLE 6.2: INDIAN CITIZEN VISITORS TO LUMBINI BY MONTH, 2011-2017	76
TABLE 6.3: COUNTRY-WISE VISIT TO BIRTH PLACE OF LORD BUDDHA, LUMBINI BY MONTH, 2017	77
TABLE 6.4: SUMMARY OF VISITORS BY BOARD ORIGIN IN LUMBINI BY MONTH, 2017	80
PART VII INCOME GENERATION	81
TABLE 7.1: GROSS FOREIGN EXCHANGE EARNINGS FROM TOURISM BY FY, 2057/58 TO 2072/73	83
TABLE 7.2: GROSS FOREIGN EXCHANGE EARNINGS, 2000-2017	85
TABLE 7.3: FOREIGN EXCHANGE EARNINGS FROM TOURISM, 2000/01-2015/16	86
TABLE 7.4: SOME ECONOMIC INDICATORS OF HOTEL AND RESTAURANT (NSIC CATEGORY) BY FISCAL YEAR 2062/63 to 2071/72	87
PART VIII FLIGHT AND PASSENGER MOVEMENT	89
TABLE 8.1: NUMBER OF INTERNATIONAL FLIGHT AND PASSENGER MOVEMENT BY MONTH, 2017	91
TABLE 8.2: NUMBER OF INTERNATIONAL AIRLINES WISE FLIGHT & PASSENGER MOVEMENT, 2011-2017	92
TABLE 8.3: INTERNATIONAL AIRLINES WISE FLIGHT & PASSENGER MOVEMENT, 2017	92
TABLE 8.4: NUMBER OF DOMESTIC FLIGHT & PASSENGER MOVEMENT, 2017	94
TABLE 8.5: NUMBER OF DOMESTIC FLIGHT AND PASSENGER MOVEMENT BY MONTH, 2017	94
TABLE 8.6: FLIGHT & PASSENGER MOVEMENT BY AIRLINES, 2017	95
TABLE 8.7: NUMBER OF PARA GLIDERS IN POKHARA BY MONTHS, 2012-2017	96
PART IX TOURISM INDUSTRY	97
TABLE 9.1: TOURIST STANDARD HOTEL REGISTERED IN NEPAL	99
TABLE 9.2: TOURIST INDUSTRIES AND GUIDE IN NEPAL	99
TABLE 9.3: REGISTERED HOME STAY,2013-2017	100

TABLE 9.4: CIVIL AVIATION INDICATORS, NEPAL	102
PART X TOURISM EDUCATION	103
TABLE 10.1: TOURISM AND HOTEL RELATED EDUCATION AND TRAININGS ,2007-2017	105
PART XI MISCELLANEOUS	107
TABLE 11.1: TOURIST RELATED ACCIDENT/INCIDENT REPORTED BY MONTH,2072/73	109
TABLE 11.2: TOURIST RELATED ACCIDENT/INCIDENT REPORTED BY NATIONALITY,	110
TABLE 11.3: TOURIST RELATED ACCIDENT/INCIDENT REPORTED BY GENDER,2017	112

CHARTS

CHART 2.1: TOURIST ARRIVALS, 2007-2017	11
CHART 2.2: TOURIST ARRIVAL BY MONTH, 2011-2017	14
CHART 2.3: TOURIST ARRIVAL BY YEAR AND COUNTRY, 2001-2017	19
CHART 2.4: TOURIST ARRIVAL BY SEX, 2001-2017	21
CHART 2.5: TOURIST ARRIVAL BY AGE GROUP, 2012-2017	23
CHART 4.1: TOURIST ARRIVAL BY PURPOSE OF VISIT, 2017	33
CHART 6.1: VISITORS DISTRIBUTION OF LUMBIINI BY BOARD COUNTRY ORIGIN, 2017	80
CHART 7.1: GROSS FOREIGN EXCHANGE EARNING FROM TOURISM, FY 2064/65-2073/74	84

PART I

FACT SHEET



FACT SHEET 1

Indicators	2016	2017	% Change
Tourist Arrival by:			
Air	572563	760577	32.8
Land	180439	179641	-0.4
Total	753002	940218	25
Average Length of Stay	13.4	12.6	-6.0
Sex:			
Male	399091	509598	27.7
Female	353911	430620	21.7
By Age groups:			
0-15 years	29825	35332	18.5
16-30 years	154960	217143	40.1
31-45 years	218479	292827	34.0
46-60 years	199139	244342	22.7
61+ years	130627	141316	8.2
Not Specified	19972	9258	
Top Five Country of Nationality:			
Rank 1	India	India	
Rank 2	China	China	
Rank 3	Srilanka	USA	
Rank 4	USA	United Kingdom	
Rank 5	United Kingdom	Srilanka	
Purpose of Visit:			
Holiday/Pleasure	489452	658153	34.5
Pilgrimage	82830	141033	70.3
Trekking & Mountaineering	66490	75217	13.1
Official	21310	na	
Business	24322	na	
Conference/Conv.	12801	na	
Others	55797	65815	18.0

FACT SHEET 2

Indicators	2016	2017	% Change
Tourist Arrival by Major Five Airlines:			
Rank 1	Nepal Airlines	Jet Airways	
Rank 2	Qatar Air	Nepal Airlines	
Rank 3	Air Arabia	Qatar Air	
Rank 4	Jet Airways	Air Arabia	
Rank 5	Fly Dubai	Fly Dubai	
Mountaineering Expedition(above 6500 mtrs):			
Total Team	278	291	4.7
Successful Person	1981	2277	14.9
Royalty to Government (Rs.' 000)	255744	387416	51.5
Revenue from Tourism:			
Total Earning(US\$ ' 000)	554530	658092	18.7
Average expenses / Visitor / day (US\$)	53	54	1.9
Tourism Related Enterprises :			
Hotel (star)	120	125	4.2
Hotel (Non star)	942	977	3.7
Beds (total)	38242	39833	4.2
Travel Agencies	3444	3824	11.0
Trekking Agencies	2367	2637	11.4
Tourist Guide	3717	3876	4.3
Trekking Guide	13049	13831	6.0

FACT SHEET 3

Indicators	2016	2017	% Change
Places Visited:			
National Parks and Wildlife Reserve	389223	604091	55
Pashupati Area (excluding Indian)	95411	124180	30
Lumbini (excluding Indian Tourists)	136253	145796	7
Manaslu Trekking	4780	5745	20
Mustang Trekking	3984	6632	66
HumlaTrekking	10105	13398	33
Lower Dolpa Trekking	1023	924	-10
Kanchanjunga Trekking	502	1008	101
Upper Dolpa Trekking	531	425	-20
International Airlines Movement:			
Arrival	13558	16680	23
Departure	13560	16682	23
Total	27118	33362	23

PART II

TOURIST ARRIVALS



Year 2017 seems remarkable improvement in tourist arrivals. Tourist arrivals increased by 25 percent compared to 2016.

Out of total tourist arrivals, five countries occupy more than 50 percent. The proportion of tourists from these countries are; India (17.1%), China (11.1%), USA (8.4%), United Kingdom (5.4%) and Srilanka (4.8%). Seasonality exists in tourist arrivals. The highest number of arrival is observed in October followed by February. There is no major change in sex and age group of tourist arrivals. By sex male (54%) and about two third arrivals were of age category 16-45 (74%) in year 2017.

TABLE 2.1: TOURIST ARRIVAL AND AVERAGE LENGTH OF STAY, 1964-2017

Year	Total		By Air		By Land		Average Length of Stay
	Number	Annual Growth Rate (%)	Number	Percent	Number	Percent	
1964	9,526	30.9	8,435	88.5	1,091	11.5	NA
1965	9,388	-1.4	8,303	88.4	1,085	11.6	NA
1966	12,567	33.9	11,206	89.2	1,361	10.8	NA
1967	18,093	44.0	15,064	83.3	3,029	16.7	NA
1968	24,209	33.8	19,717	81.4	4,492	18.6	NA
1969	34,901	44.2	28,130	80.6	6,771	19.4	NA
1970	45,970	31.7	36,508	79.4	9,462	20.6	NA
1971	49,914	8.6	40,369	80.9	9,545	19.1	NA
1972	52,930	6.0	42,484	80.3	10,446	19.7	NA
1973	68,047	28.6	55,791	82.0	12,256	18.0	NA
1974	89,838	32.0	74,170	82.6	15,668	17.4	13.20
1975	92,440	2.9	78,995	85.5	13,445	14.5	13.05
1976	105,108	13.7	90,498	86.1	14,610	13.9	12.41
1977	129,329	23.0	110,180	85.2	19,149	14.8	11.60
1978	156,123	20.7	130,034	83.3	26,089	16.7	11.84
1979	162,276	3.9	137,865	85.0	24,411	15.0	12.02
1980	162,897	0.4	139,387	85.6	23,510	14.4	11.18
1981	161,669	-0.8	142,084	87.9	19,585	12.1	10.49
1982	175,448	8.5	153,509	87.5	21,939	12.5	13.33
1983	179,405	2.3	152,470	85.0	26,935	15.0	11.53
1984	176,634	-1.5	149,920	84.9	26,714	15.1	11.55
1985	180,989	2.5	151,870	83.9	29,119	16.1	11.30
1986	223,331	23.4	182,745	81.8	40,586	18.2	11.16
1987	248,080	11.1	205,611	82.9	42,469	17.1	11.98
1988	265,943	7.2	234,945	88.3	30,998	11.7	12.00
1989	239,945	53.7	207,907	86.6	32,038	13.4	12.00
1990	254,885	6.2	226,421	88.8	28,464	11.2	12.00

TABLE 2.1: TOURIST ARRIVAL AND AVERAGE LENGTH OF STAY,1964-2017

Year	Total		By Air		By Land		Average Length of Stay
	Number	Growth Rate (%)	Number	Percent	Number	Percent	
1991	292,995	15.0	267,932	91.4	25,063	8.6	9.25
1992	334,353	14.1	300,496	89.9	33,857	10.1	10.14
1993	293,567	-12.2	254,140	86.6	39,427	13.4	11.94
1994	326,531	11.2	289,381	88.6	37,150	11.4	10.00
1995	363,395	11.3	325,035	89.4	38,360	10.6	11.27
1996	393,613	8.3	343,246	87.2	50,367	12.8	13.50
1997	421,857	7.2	371,145	88.0	50,712	12.0	10.49
1998	463,684	9.9	398,008	85.8	65,676	14.2	10.76
1999	491,504	6.0	421,243	85.7	70,261	14.3	12.28
2000	463,646	-5.7	376,914	81.3	86,732	18.7	11.88
2001	361,237	-22.1	299,514	82.9	61,723	17.1	11.93
2002	275,468	-23.7	218,660	79.4	56,808	20.6	7.92
2003	338,132	22.7	275,438	81.5	62,694	18.5	9.60
2004	385,297	13.9	297,335	77.2	87,962	22.8	13.51
2005	375,398	-2.6	277,346	73.9	98,052	26.1	9.09
2006	383,926	2.3	283,819	73.9	100,107	26.1	10.20
2007	526,705	37.2	360,713	68.5	165,992	31.5	11.96
2008	500,277	-5.0	374,661	74.9	125,616	25.1	11.78
2009	509,956	1.9	379,322	74.4	130,634	25.6	11.32
2010	602,867	18.2	448,800	74.4	154,067	25.6	12.67
2011	736,215	22.1	545,221	74.1	190,994	25.9	13.12
2012	803,092	9.1	598,258	74.5	204,834	25.5	12.16
2013	797,616	-0.7	594,848	74.6	202,768	25.4	12.60
2014	790118	-0.9	585981	74.2	204137	25.8	12.44
2015	538970	-32	407412	75.6	131558	24.4	13.16
2016	753002	40	572563	76	180439	24	13.4
2017	940218	25	760577	81	179641	19	12.6

CHART 2.1: TOURIST ARRIVAL IN NEPAL 2008-2017

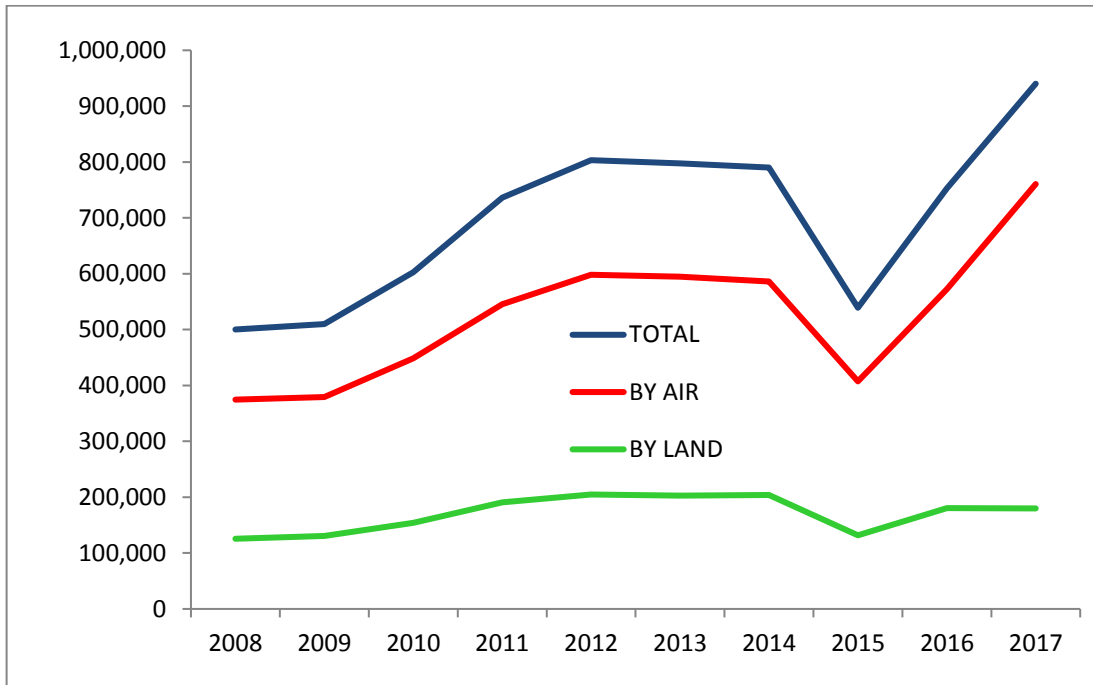


TABLE 2.2: TOURIST ARRIVAL BY MONTH, 1992-2017

Year	Jan.	Feb.	Mar.	Apr.	May	Jun.	Jul.	Aug.	Sep.	Oct.	Nov.	Dec.	Total
1992	17,451	27,489	31,505	30,682	29,089	22,469	20,942	27,338	24,839	42,647	32,341	27,561	334,353
1993	19,238	23,931	30,818	20,121	20,585	19,602	13,588	21,583	23,939	42,242	30,378	27,542	293,567
1994	21,735	24,872	31,586	27,292	26,232	22,907	19,739	27,610	27,959	39,393	28,008	29,198	326,531
1995	22,207	28,240	34,219	33,994	27,843	25,650	23,980	27,686	30,569	46,845	35,782	26,380	363,395
1996	27,886	29,676	39,336	36,331	29,728	26,749	22,684	29,080	32,181	47,314	37,650	34,998	393,613
1997	25,585	32,861	43,177	35,229	33,456	26,367	26,091	35,549	31,981	56,272	40,173	35,116	421,857
1998	28,822	37,956	41,338	41,087	35,814	29,181	27,895	36,174	39,664	62,487	47,403	35,863	463,684
1999	29,752	38,134	46,218	40,774	42,712	31,049	27,193	38,449	44,117	66,543	48,865	37,698	491,504
2000	25,307	38,959	44,944	43,635	28,363	26,933	24,480	34,670	43,523	59,195	52,993	40,644	463,646
2001	30,454	38,680	46,709	39,083	28,345	13,030	18,329	25,322	31,170	41,245	30,282	18,588	361,237
2002	17,176	20,668	28,815	21,253	19,887	17,218	16,621	21,093	23,752	35,272	28,723	24,990	275,468
2003	21,215	24,349	27,737	25,851	22,704	20,351	22,661	27,568	28,724	45,459	38,398	33,115	338,132
2004	30,988	35,631	44,290	33,514	26,802	19,793	24,860	33,162	25,496	43,373	36,381	31,007	385,297

TABLE 2.2: TOURIST ARRIVAL BY MONTH, 1992-2017 (contd.)

Year	Jan.	Feb.	Mar.	Apr.	May	Jun.	Jul.	Aug.	Sep.	Oct.	Nov.	Dec.	Total
2005	25,477	20,338	29,875	23,414	25,541	22,608	23,996	36,910	36,066	51,498	41,505	38,170	375,398
2006	28,769	25,728	36,873	21,983	22,870	26,210	25,183	33,150	33,362	49,670	44,119	36,009	383,926
2007	33,192	39,934	54,722	40,942	35,854	31,316	35,437	44,683	45,552	70,644	52,273	42,156	526,705
2008	36,913	46,675	58,735	38,475	30,410	24,349	25,427	40,011	41,622	66,421	52,399	38,840	500,277
2009	29,278	40,617	49,567	43,337	30,037	31,749	30,432	44,174	42,771	72,522	54,423	41,049	509,956
2010	33,645	49,264	63,058	45,509	32,542	33,263	38,991	54,672	54,848	79,130	67,537	50,408	602,867
2011	42,622	56,339	67,565	59,751	46,202	46,115	42,661	71,398	63,033	96,996	83,460	60,073	736,215
2012	52,501	66,459	89,151	69,796	50,317	53,630	49,995	71,964	66,383	86,379	83,173	63,344	803,092
2013	47,846	67,264	88,697	65,152	52,834	54,599	54,011	68,478	66,755	99,426	75,485	57,069	797,616
2014	70196	69009	79914	80053	62558	50731	46546	59761	52894	80993	76305	61158	790,118
2015	38,616	58,523	79,187	65,729	17,569	18,368	22,967	38,606	39,050	56,584	58,304	45,467	538,970
2016	42,235	60,821	76,444	60,214	46,683	38,852	48,115	66,341	74,670	89,281	72,990	76,356	753002
2017	62,632	84,061	106,291	88,591	62,773	55,956	42,240	73,778	68,634	112,492	99,804	82,966	940218
Changes*	48	38	39	47	34	44	-12	11	-8	26	37	9	25

* Figures in parenthesis represent percentage change over 2016

CHART 2.2: TOURIST ARRIVAL BY MONTH, 2013-2017

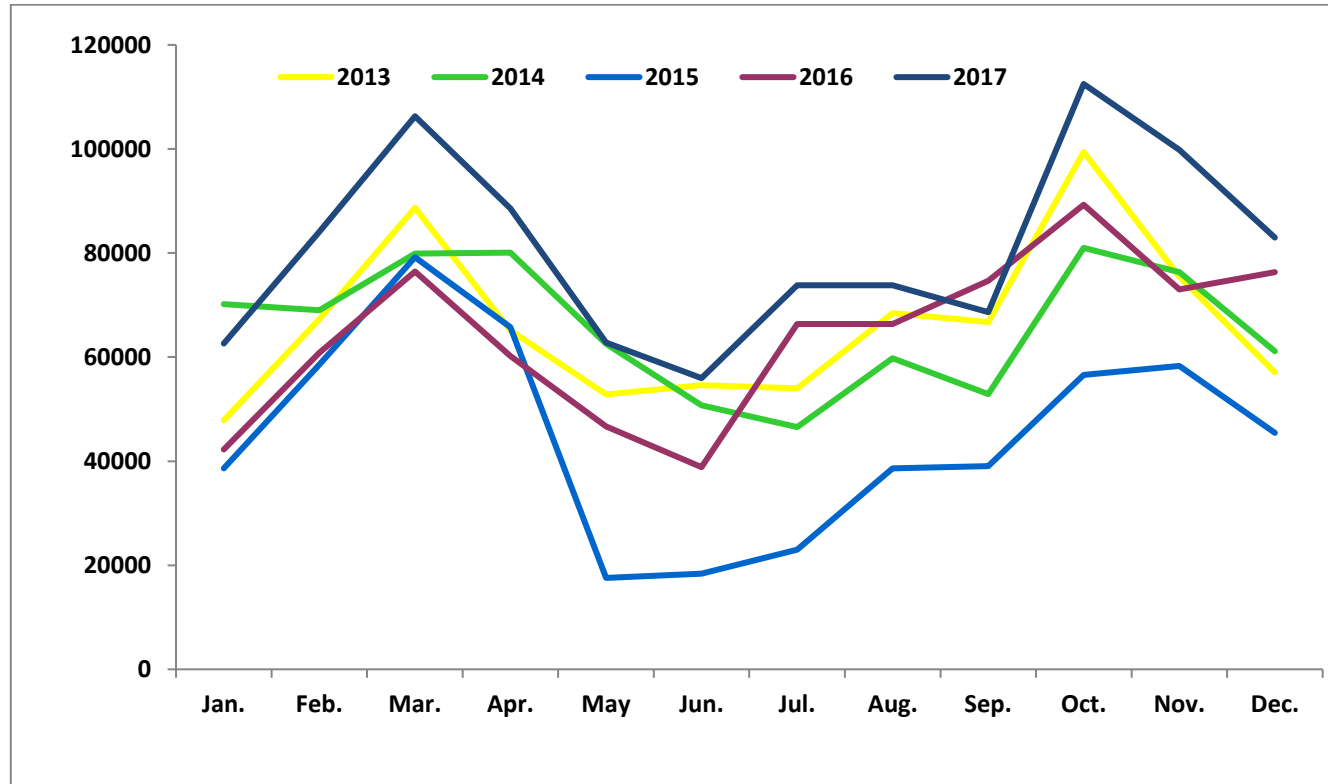


TABLE 2.3: TOURIST ARRIVAL BY MONTH, 1992-2017(Excluding Indian citizens)

Year	Jan	Feb	Mar	Apr	May	Jun	July	Aug	Sep	Oct	Nov	Dec	Total
1992	12,560	20,331	24,792	20,295	11,380	7,264	12,708	20,198	18,442	33,834	25,862	20,113	227,779
1993	14,147	18,164	25,200	14,594	9,355	8,536	9,076	16,671	18,293	34,415	23,715	18,039	210,205
1994	14,795	19,794	24,856	19,778	12,244	8,561	13,352	20,524	21,289	30,063	20,556	18,179	223,991
1995	15,758	19,482	25,381	23,419	12,491	9,270	14,141	20,211	22,344	38,398	28,177	17,063	246,135
1996	17,678	23,629	31,738	25,458	14,042	9,777	13,724	21,833	23,201	38,139	29,221	22,661	271,101
1997	16,856	24,151	33,389	24,343	14,836	9,973	16,024	24,772	24,344	46,110	30,712	22,909	288,419
1998	20,124	27,855	33,097	28,997	15,647	11,195	15,724	26,387	29,241	49,787	38,587	23,814	320,455
1999	20,554	29,259	38,158	29,637	22,305	12,731	16,782	29,402	33,650	54,099	38,835	25,431	350,843
2000	21,092	33,939	38,959	36,430	18,658	12,036	16,842	27,205	34,643	51,100	45,318	31,509	367,731
2001	25,158	32,763	40,684	32,211	17,406	8,929	13,965	21,658	26,132	37,198	25,795	15,018	296,917
2002	13,180	16,960	25,102	16,877	11,751	8,338	9,962	15,515	18,768	30,251	24,044	17,943	208,691
2003	15,659	19,321	22,260	20,303	15,288	7,835	13,607	19,149	22,577	38,040	31,750	25,980	251,769
2004	22,947	28,743	35,468	26,279	15,581	9,776	17,070	27,657	21,829	38,104	29,330	22,187	294,971
2005	19,531	17,061	25,847	18,311	15,438	11,170	14,921	26,119	27,413	40,553	34,778	27,822	278,964

TABLE 2.3: TOURIST ARRIVAL BY MONTH, 1992-2017 (Excluding Indian citizens) (contd.)

Year	Jan	Feb	Mar	Apr	May	Jun	July	Aug	Sep	Oct	Nov	Dec	Total
2006	21,126	21,320	30,169	18,435	13,517	11,841	15,066	24,966	26,327	43,026	37,402	27,009	290,204
2007	25,857	33,133	48,022	32,794	23,296	18,937	26,160	37,658	38,813	65,745	46,822	33,458	430,695
2008	30,473	40,334	51,364	31,952	19,619	12,922	18,097	32,084	33,870	60,938	47,467	29,980	409,100
2009	23,969	34,594	45,950	34,938	20,362	17,078	19,942	36,121	36,241	65,592	48,667	32,618	416,072
2010	28,076	43,289	56,632	37,208	21,053	17,967	24,273	43,172	44,650	69,982	57,304	38,363	481,969
2011	34,541	48,045	58,455	49,089	29,692	25,081	28,875	55,204	50,560	86,988	72,436	47,745	586,711
2012	42,055	55,301	72,882	53,745	30,140	30,084	34,837	57,590	54,654	79,536	74,603	51,850	637,277
2013	40,296	58,195	73,434	53,079	33,295	28,507	37,666	57,642	51,912	77,163	59,630	45,822	616,642
2014	57,062	58,874	70,008	67,165	41,979	30,024	37,567	51,828	45,807	72,964	69,143	52,354	654,775
2015	32633	51251	71573	56214	13746	13174	17901	31571	32351	51683	52542	39207	463846
2016	36,563	54,272	68,595	50,831	34,332	26,432	37,497	54,924	64,143	81,706	62,304	63,154	634,753
2017	52085	72865	93562	73996	42762	35838	63585	59721	59719	101824	87890	67077	779386
changes *	42.5	34.3	36.4	45.6	24.6	35.6	69.6	8.7	-6.9	24.6	41.1	6.2	22.8

Source: Department of Immigration

*Figures in parenthesis represent percentage change over 2016

TABLE 2.4: INDIAN TOURIST ARRIVAL BY MONTH, BY AIR, 1992-2017

Year	Jan.	Feb.	Mar.	Apr.	May	Jun.	July	Aug.	Sep.	Oct.	Nov.	Dec.	Total
1992	4,891	7,158	6,713	10,387	17,709	15,205	8,234	7,140	6,397	8,813	6,479	7,448	106,574
1993	5,091	5,767	5,618	5,527	11,230	11,066	4,512	4,912	5,646	7,827	6,663	9,503	83,362
1994	6,940	5,078	6,730	7,514	13,988	14,346	6,387	7,086	6,670	9,330	7,452	11,019	102,540
1995	6,449	8,758	8,838	10,575	15,352	16,380	9,839	7,475	8,225	8,447	7,605	9,317	117,260
1996	10,208	6,047	7,598	10,873	15,686	16,972	8,960	7,247	8,980	9,175	8,429	12,337	122,512
1997	8,729	8,710	9,788	10,886	18,620	16,394	10,067	10,777	7,637	10,162	9,461	12,207	133,438
1998	8,698	10,101	8,241	12,090	20,167	17,986	12,171	9,787	10,423	12,700	8,816	12,049	143,229
1999	9,198	8,875	8,060	11,137	20,407	18,318	10,411	9,047	10,467	12,444	10,030	12,267	140,661
2000	4,215	5,020	5,985	7,205	9,705	14,897	7,638	7,465	8,880	8,095	7,675	9,135	95,915
2001	5,296	5,917	6,025	6,872	10,939	4,101	4,364	3,664	5,038	4,047	4,487	3,570	64,320
2002	3,996	3,708	3,713	4,376	8,136	8,880	6,659	5,578	4,984	5,021	4,679	7,047	66,777
2003	5,556	5,028	5,477	5,548	7,416	12,516	9,054	8,419	6,147	7,419	6,648	7,135	86,363
2004	8,041	6,888	8,822	7,235	11,221	10,017	7,790	5,505	3,667	5,269	7,051	8,820	90,326

Year	Jan.	Feb.	Mar.	Apr.	May	Jun.	July	Aug.	Sep.	Oct.	Nov.	Dec.	Total
2005	5,946	3,277	4,028	5,103	10,103	11,438	9,075	10,791	8,653	10,945	6,727	10,348	96,434
2006	7,643	4,408	6,704	3,548	9,353	14,369	10,117	8,184	7,035	6,644	6,717	9,000	93,722
2007	7,335	6,801	6,700	8,148	12,558	12,379	9,277	7,025	6,739	4,899	5,451	8,698	96,010
2008	6,440	6,341	7,371	6,523	10,791	11,427	7,330	7,927	7,752	5,483	4,932	8,860	91,177
2009	5,309	6,023	3,617	8,399	9,675	14,671	10,490	8,053	6,530	6,930	5,756	8,431	93,884
2010	5,569	5,975	6,426	8,301	11,489	15,296	14,718	11,500	10,198	9,148	10,233	12,045	120,898
2011	8,081	8,294	9,110	10,662	16,510	21,034	13,786	16,194	12,473	10,008	11,024	12,328	149,504
2012	10,446	11,158	16,269	16,051	20,177	23,546	15,158	14,374	11,729	6,843	8,570	11,494	165,815
2013	7,550	9,069	15,263	12,073	19,539	26,092	16,345	10,836	14,843	22,263	15,855	11,247	180,974
2014	13,134	10,135	9,906	12,888	20,579	20,707	8,979	7,933	7,087	8,029	7,162	8,804	135,343
2015	5983	7272	7614	9515	3823	5194	5066	7035	6699	4901	5762	6260	75124
2016	5672	6549	7849	9383	12351	12420	10618	11417	10,527	7,575	10,686	13,202	118249
2017	10547	11196	12720	14595	20011	20118	10193	14,057	8,915	10,668	11,914	15,889	160,832
Change*	85.9	71.0	62.2	55.5	62.0	62.0	-4.0	23.1	-15.3	40.8	11.5	20.4	36.0

*Figures in parenthesis represent percentage change over 2017. Source: Department of Immigration

TABLE 2.5: TOURIST ARRIVAL BY YEAR, 1993-2017

Year	Third Country	Indian	Total	% Change
1993	210205	83362	293567	-12.2
1994	223991	102540	326531	11.2
1995	246135	117260	363395	11.3
1996	271101	122512	393613	8.3
1997	288419	133438	421857	7.2
1998	320455	143229	463684	9.9
1999	350843	140661	491504	6.0
2000	367731	95915	463646	-5.7
2001	296917	64320	361237	-22.1
2002	208691	66777	275468	-23.7
2003	251769	86363	338132	22.7
2004	294971	90326	385297	13.9
2005	278964	96434	375398	-2.6
2006	290204	93722	383926	2.3
2007	430695	96010	526705	37.2
2008	409100	91177	500277	-5.0
2009	416072	93884	509956	1.9
2010	481969	120898	602867	18.2
2011	586711	149504	736215	22.1
2012	637277	165815	803092	9.1
2013	616642	180974	797616	-0.7
2014	654775	135343	790118	-0.9
2015	464156	74814	538970	-31
2016	634,753	118,249	753,002	40
2017	779386	160,832	940218	25

Source: Department of Immigration

CHART: 2.3 TOURIST ARRIVALS BY COUNTRY, 2001-2017

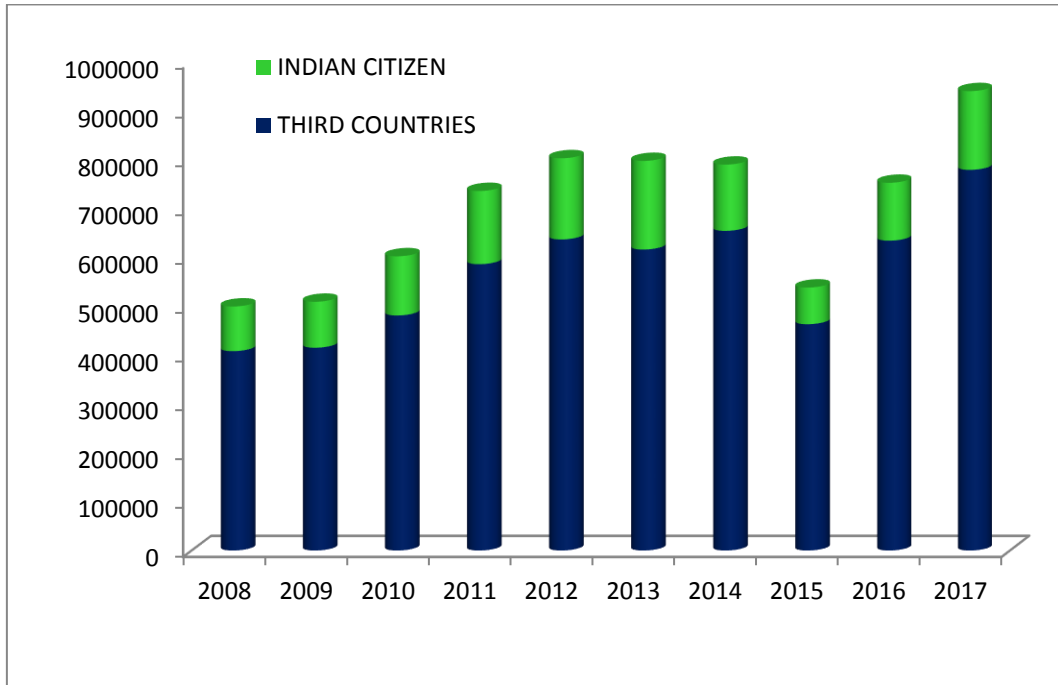


TABLE 2.6: TOURIST ARRIVAL BY SEX, 1993-2017

Year	Sex				Total
	Male	%	Female	%	
1993	179,178	61.0	114,389	39.0	293,567
1994	205,389	62.9	121,142	37.1	326,531
1995	224,769	61.9	138,626	38.1	363,395
1996	233,055	59.2	160,558	40.8	393,613
1997	251,358	59.6	170,499	40.4	421,857
1998	267,871	57.8	195,813	42.2	463,684
1999	286,161	58.2	205,343	41.8	491,504
2000	266,937	57.6	196,709	42.4	463,646
2001	213,465	59.1	147,772	40.9	361,237
2002	174,710	63.4	100,758	36.6	275,468
2003	204,732	60.5	133,400	39.5	338,132
2004	255,303	66.3	129,994	33.7	385,297
2005	257,972	68.7	117,426	31.3	375,398
2006	218,818	57.0	165,108	43.0	383,926
2007	290,688	55.2	236,017	44.8	526,705
2008	286,983	57.4	213,294	42.6	500,277
2009	288,155	56.5	221,801	43.5	509,956
2010	361,611	60.0	241,256	40.0	602,867
2011	352,059	47.8	384,156	52.2	736,215
2012	439,270	54.7	363,822	45.3	803,092
2013	449,058	56.3	348,558	43.7	797,616
2014	445,627	56.4	344,491	43.6	790,118
2015	289,158	53.7	249,813	46.4	538,970
2016	399,091	53.0	353,911	47.0	753,002
2017	509,585	54.2	430,633	45.8	940,218

Source: Department of Immigration

CHART 2.4: TOURIST ARRIVAL BY SEX, 2008-2017

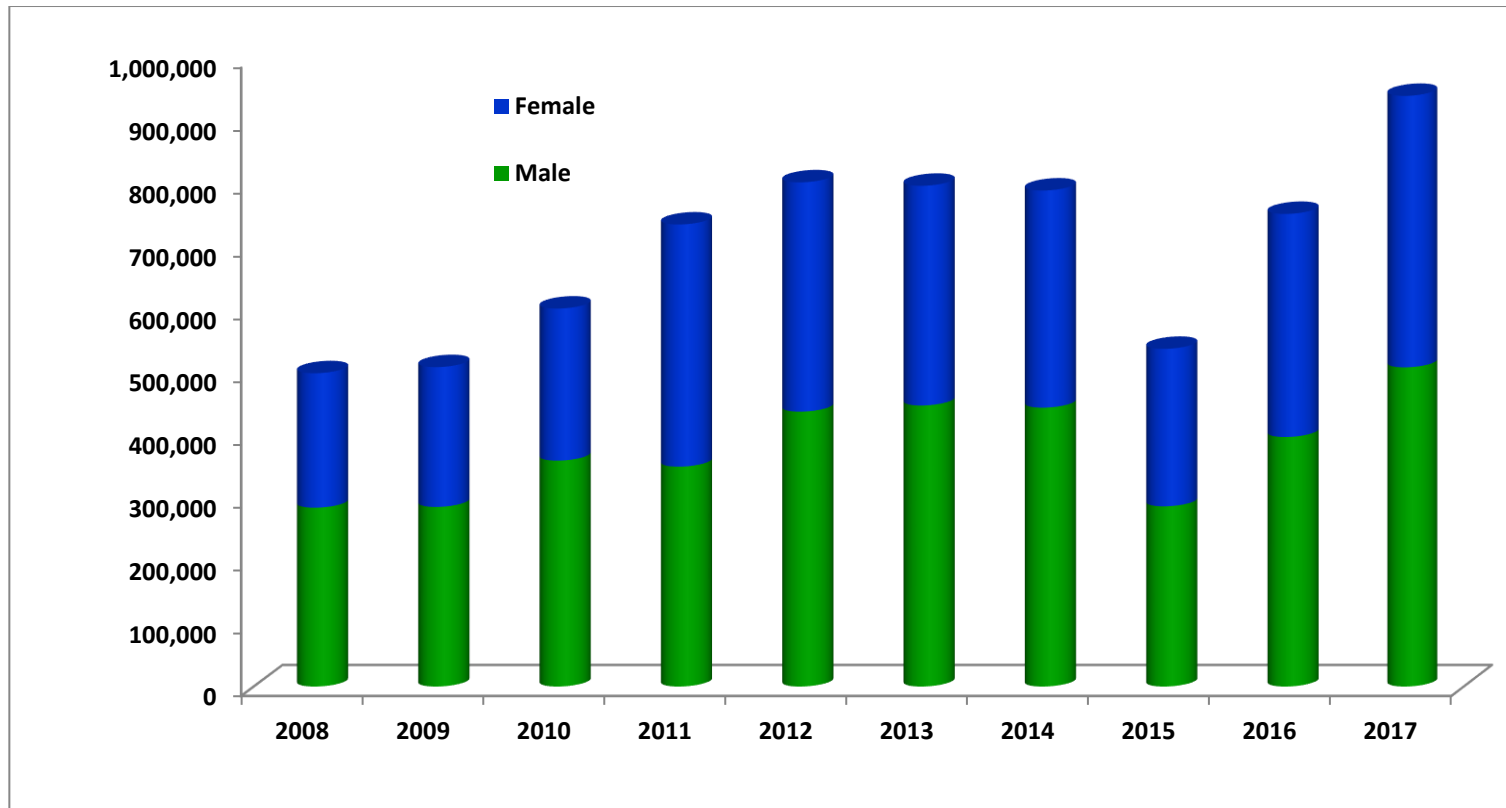


TABLE 2.7: TOURIST ARRIVAL BY AGE GROUPS, 1993-2017

Year	Total	Age Groups					Not Sp.
		0-15	16-30	31-45	46-60	60+	
1993	293,567	15,289	91,947	96,665	59,768	29,898	NA
	(100)	(5.2)	(31.3)	(32.9)	(20.4)	(10.2)	NA
1994	326,531	20,097	96,016	106,260	66,174	37,984	NA
	(100)	(6.2)	(29.4)	(32.5)	(20.3)	(11.6)	NA
1995	363,395	22,878	106,603	120,212	76,647	37,055	NA
	(100)	(6.3)	(29.3)	(33.1)	(21.1)	(10.2)	NA
1996	393,613	22,185	94,924	116,307	89,751	70,446	NA
	(100)	(5.6)	(24.1)	(29.5)	(22.8)	(17.9)	NA
1997	421,857	23,840	121,286	126,828	107,111	42,792	NA
	(100)	(5.7)	(28.8)	(30.1)	(25.4)	(10.1)	NA
1998	463,684	26,763	122,103	151,846	121,190	41,782	NA
	(100)	(5.8)	(26.3)	(32.7)	(26.1)	(9.0)	NA
1999	491,504	30,967	150,307	155,985	113,314	40,913	NA
	(100)	(6.3)	(30.6)	(31.7)	(23.1)	(8.3)	NA
2000	463,646	19,136	119,816	148,063	125,140	51,491	NA
	(100)	(4.1)	(25.8)	(31.9)	(27.0)	(11.1)	NA
2001	361,237	14608	95801	115678	93621	41529	NA
	(100)	(4.0)	(26.5)	(32.0)	(25.9)	(11.5)	NA
2002	275,468	12425	67774	99622	67017	28630	NA
	(100)	(4.5)	(24.6)	(36.2)	(24.3)	(10.4)	NA
2003	338,132	16056	78,357	99,740	85,753	58,226	NA
	(100)	(4.7)	(23.2)	(29.5)	(25.4)	(17.2)	NA
2004	385297	38,734	84125	128,267	96,920	37,251	NA
	(100)	(10.1)	(21.8)	(33.3)	(25.2)	(9.7)	NA
2005	375,398	30,429	57,115	114,103	106,077	67,674	NA
	(100)	(8.1)	(15.2)	(30.4)	(28.3)	(18.0)	NA
2006	383,926	37,433	75,626	123,541	95,260	52,066	NA
	(100)	(9.8)	(19.7)	(32.2)	(24.8)	(13.6)	NA
2007	526,705	38,870	112,879	164,488	130,756	69,927	9,785
	(100)	(7.4)	(21.4)	(31.2)	(24.8)	(13.3)	(1.9)
2008	500,277	42,581	106,596	150,171	121,387	60,531	19,011
	(100.0)	(8.5)	(21.3)	(30.0)	(24.3)	(12.1)	(3.8)
2009	509,956	84,891	140,805	141,955	99,197	39,638	3,470
	100.0	(16.6)	(27.6)	(27.8)	(19.5)	(7.8)	(0.7)
2010	602,867	41,156	120,395	189,852	172,800	64,593	14,071
	100.0	(6.8)	(20.0)	(31.5)	(28.7)	(10.7)	(2.3)

TABLE 2.7: TOURIST ARRIVAL BY AGE GROUP, 1993-2017 (contd.)

Year	Total	Age Groups					
		0-15	16-30	31-45	46-60	60+	Not Sp.
2011	736,215	32,795	171,081	212,176	177,983	82,726	59,454
	(100.0)	(4.5)	(23.2)	(28.8)	(24.2)	(11.2)	(8.1)
2012	803,092	35,468	181,558	231,117	201,835	109,239	43,875
	(100.0)	(4.4)	(22.6)	(28.8)	(25.1)	(13.6)	(5.5)
2013	797,616	46262	190630	237690	195416	115654	11964
	(100.0)	(5.9)	(24.1)	(30.1)	(24.7)	(14.6)	(1.5)
2014	790,118	50441	185685	235738	183582	106666	28007
	(100.0)	(6.4)	(23.5)	(29.8)	(23.2)	(13.5)	(3.5)
2015	538970	19614	123444	157416	129614	74518	34365
	(100.0)	(3.6)	(22.9)	(29.2)	(24.0)	(13.8)	(6.4)
2016	753002	29825	154960	218479	199139	130627	19972
	(100.0)	(4.0)	(20.6)	(29.0)	(26.4)	(17.3)	(2.7)
2017	940218	35332	217143	292827	244342	141316	9258
	(100.0)	(3.8)	(23.1)	(31.1)	(26.0)	(15.0)	(1.0)

Figures in parenthesis represent percentage of the total

CHART 2.5: TOURIST ARRIVALS BY AGE GROUP, 2013-2017

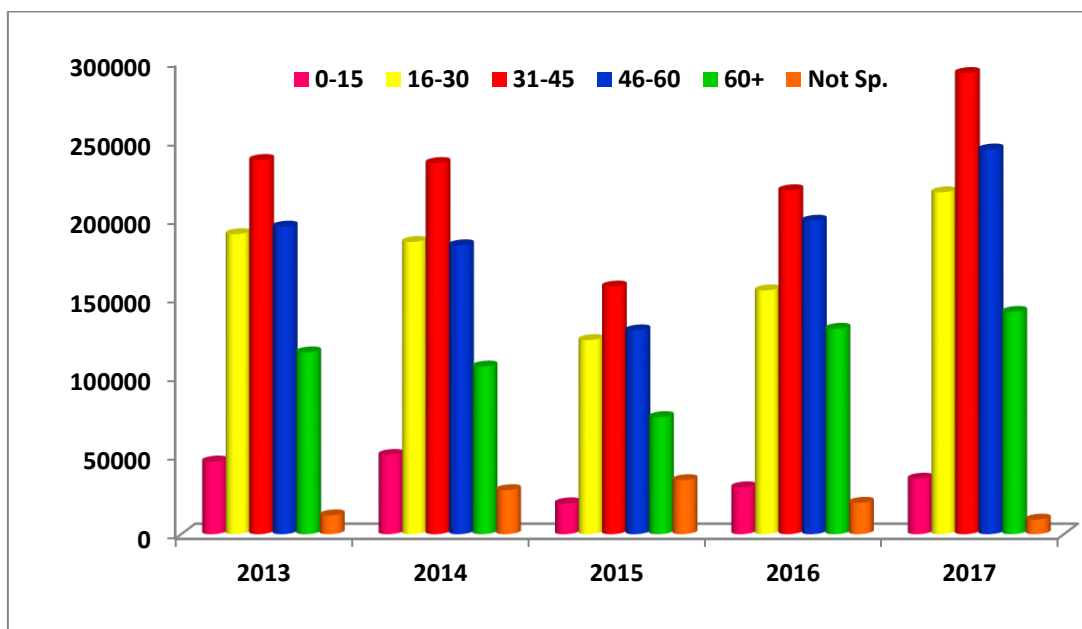


TABLE 2.8: TOURIST ARRIVAL BY MAJOR NATIONALITIES, 2008-2017

Nationality	2008	2009	2010	2011	2012	2013	2014	2015	2016	2017
Australia	13,846	15,461	16,243	19,824	22,030	20469	24516	14816	25507	33371
%	2.8	3	2.7	2.7	2.7	3.5	3.1	2.7	3.39	3.55
Bangladesh						22410	21851	14831	23440	29060
%									3.11	3.09
Canada	8,132	8,965	9,322	11,404	13,507	12132	11610	6495	12491	15105
%	1.6	1.8	1.5	1.5	1.7	1.7	1.5	1.2	1.67	1.6
China	35,166	32,272	46,360	61,917	71,861	113173	123805	64675	104005	104664
%	7	6.3	7.7	8.4	8.9	12.4	15.7	12.0	13.81	11.1
France	22,402	22,154	24,550	26,720	28,805	21842	24097	10885	20863	26140
%	4.5	4.3	4.1	3.6	3.6	3.5	3.0	2.0	2.27	2.8
Germany	18,552	19,246	22,583	27,472	30,409	22263	18028	12216	23812	29918
%	3.7	3.8	3.7	3.7	3.8	3.5	2.3	2.3	3.16	3.2
India	91,177	93,884	120,898	149,504	165,815	180974	135343	75124	118249	160832
%	18.2	18.4	20.1	20.3	20.6	23.2	17.1	13.9	15.7	17.1
Italy	7,914	7,982	10,226	12,621	14,614	9974	10347	3972	9911	11840
%	1.6	1.6	1.7	1.7	1.8	1.2	1.3	0.7	1.32	1.3
Japan	23,383	22,445	23,332	26,283	28,642	26694	25829	14465	22979	27326
%	4.7	4.4	3.9	3.6	3.6	3.3	3.3	2.7	3.05	2.9

TABLE 2.8: TOURIST ARRIVAL BY MAJOR NATIONALITIES, 2008-2017 (contd.)

Nationality	2008	2009	2010	2011	2012	2013	2014	2015	2016	2017
South Korea						19714	23205	18112	25171	34301
%									3.34	3.6
Myanmar									25796	30852
%									3.42	3.3
Netherlands	10,900	11,147	13,471	16,836	15,445	10516	12320	4324	11453	13393
%	2.2	2.2	2.2	2.3	1.9	1.3	1.6	0.8	1.52	1.4
Spain	13,851	13,006	13,712	16,037	14,549	10412	13110	4307	12255	15953
%	2.8	2.6	2.3	2.2	1.8	1.3	1.7	0.8	1.63	1.7
Sri Lanka	37,817	36,362	45,531	59,884	69,476	32736	37546	43117	57521	45361
%	7.6	7.1	7.6	8.1	8.7	4.1	4.8	8.0	7.64	4.8
Thailand						40969	33422	32338	26722	39154
%						5.1	4.2	6.0	3.55	4.2
U.S.A.	30,076	32,043	36,425	42,875	48,985	47355	49830	53897	53645	79146
%	6	6.3	6	5.8	6.1	5.9	6.3	10.0	7.12	8.4
U.K.	33,658	35,382	35,091	39,091	41,294	35668	36759	204469	46295	51058
%	6.7	6.9	5.8	5.3	5.1	4.5	4.7	3.8	6.15	5.4
Others	136,823	140,574	168,590	179,158	214,638	78821	218639	171688	119245	174460
%	27.9	28.4	28.4	26.9	27.2	23.5	27.7	31.9	15.84	18.6
Total	500,277	509,956	602,867	736,215	803,092	797,616	790,118	538,970	753,002	940,218

TABLE 2.9: TOURIST ARRIVAL BY MAJOR NATIONALITIES & MONTH, 2016-2017

Nationality	Year	Month												Total
		Jan.	Feb.	Mar.	Apr.	May	Jun.	Jul.	Aug.	Sep.	Oct.	Nov.	Dec.	
Australia	2015	1,433	1,281	2,253	2,470	509	528	529	567	1,640	2,781	2,622	2,006	18,619
	2016	1,660	1,648	354	2,416	1,233	1,037	983	1,038	3,253	4,603	4,034	3,248	25,507
	2017	2735	2386	3141	3707	1692	1532	814	1,007	4,141	4,297	4,582	3,337	33,371
Bangladesh	2015	1,108	1,866	2,551	1,996	445	445	652	961	1,196	1,038	1,344	1,229	14,831
	2016	1,187	1,418	1,721	1,567	2,000	1,175	2,686	1,728	2,789	2,079	2,101	2,989	23,440
	2017	2028	2124	2901	2758	2349	3	1549	2,251	3,683	2,418	2,784	4,212	29,060
Bhutan	2017	1274	1019	2045	549	564	575	502	621	707	535	829	1,703	10923
Canada	2015	422	667	1,321	1,145	526	323	327	400	622	1,119	986	540	8,398
	2016	676	961	1,283	1,173	895	528	640	647	1,134	2,017	1,587	950	12,491
	2017	911	1305	1784	1693	1117	667	531	670	1,245	2,333	1,714	1,135	15,105

TABLE 2.9: TOURIST ARRIVAL BY NATIONALITIES & MONTH, 2015-2017 (contd.)

Nationality	Year	Month												Total
		Jan.	Feb.	Mar.	Apr.	May	Jun.	Jul.	Aug.	Sep.	Oct.	Nov.	Dec.	
China	2015	7,671	14,100	10,513	12,252	1,107	1,625	1,946	2,375	3,560	3,316	4,490	4,029	66,984
	2016	6,896	7,980	8,588	8,622	6,998	6,644	7,573	7,890	10,066	9,374	12,301	11,073	104,005
	2017	9727	9499	10458	8601	7309	6490	5823	7,349	8,351	9,735	10,312	11,010	104,664
Denmark	2015	220	280	625	395	58	92	98	118	247	586	280	160	3159
	2016	267	289	645	435	202	155	210	156	435	754	365	169	4,082
	2017	265	382	649	656	238	123	123	160	306	776	462	147	4,287
France	2015	689	1294	2641	2960	389	376	608	661	1152	3181	1732	722	16405
	2016	748	1,122	1,905	2,432	889	591	1,226	1,162	1,907	5,049	2,776	1,056	20,863
	2017	942	1566	2697	3451	1203	852	1025	1,073	1,991	6,332	3,695	1,313	26,140
Germany	2015	689	1,294	2,641	2,960	389	376	608	661	1,152	3,181	1,732	722	16,405
	2016	808	1,660	3,250	2,038	1,318	599	797	1,158	2,552	5,712	2,752	1,168	23,812
	2017	1014	2243	4192	3891	1380	779	711	1,192	2,883	6,548	3,869	1,216	29,918
India	2015	5,983	7,272	7,614	9,515	3,823	5,194	5,066	7,035	6,699	4,901	5,762	6,260	75,124
	2016	5,672	6,549	7,849	9,383	12,351	12,420	10,618	11,417	10,527	7,575	10,686	13,202	118,249
	2017	10547	11196	12729	14595	20011	20118	10193	14,057	8,915	10,668	11,914	15,889	160,832

TABLE 2.9: TOURIST ARRIVAL BY NATIONALITIES & MONTH, 2015-2017 (contd.)

Nationality	Year	Month												Total
		Jan.	Feb.	Mar.	Apr.	May	Jun.	Jul.	Aug.	Sep.	Oct.	Nov.	Dec.	
Italy	2015	295	423	670	841	193	149	221	553	405	803	599	457	5,609
	2016	288	392	624	797	694	281	589	1,579	872	1,637	1,277	881	9,911
	2017	511	694	821	1308	682	431	509	1,634	824	2,012	1,389	1,025	11,840
Japan	2015	1,367	2,127	2,848	1,614	653	658	733	1,263	1,336	1,532	1,874	1,608	17,613
	2016	1,181	1,754	2,524	1,965	1,115	876	1,094	1,722	1,855	2,658	3,454	2,781	22,979
	2017	2027	2935	3586	2252	1329	955	944	1,857	1,992	2,969	3,719	2,761	27,326
Malaysia	2015	537	1,227	1,537	1,288	497	391	408	378	664	744	954	1,230	9,855
	2016	460	715	1,092	849	703	535	772	1,179	1,774	1,432	2,060	2,098	13,669
	2017	1121	1333	1858	1833	1169	988	820	1,069	1,125	1,918	2,595	2,455	18,284
Myanmar	2016	2,398	4,108	4,371	1,768	213	69	154	71	172	2,965	5,117	4,363	25,769
	2017	2748	5285	0	2483	122	51	63	9,674	167	2,457	3,856	3,946	30,852

TABLE 2.9: TOURIST ARRIVAL BY NATIONALITIES & MONTH, 2015-2017 (contd.)

Nationality	Year	Month												Total
		Jan.	Feb.	Mar.	Apr.	May	Jun.	Jul.	Aug.	Sep.	Oct.	Nov.	Dec.	
Netherlands	2015	365	699	1,167	1,003	158	197	271	365	527	1,353	838	572	7,515
	2016	433	684	972	1,171	560	383	941	804	1,109	2,255	1,282	859	11,453
	2017	577	1100	1498	1732	655	388	866	826	1,025	2,411	1,504	811	13,393
Pakistan	2015	200	282	227	235	245	204	187	249	230	169	228	301	2,757
	2016	230	281	314	302	344	260	347	403	482	248	0	340	3,551
	2017	322	348	373	338	370	321	346	289	317	449	411	343	4,227
South Korea	2015	4,097	1,054	2,381	1,659	708	619	870	885	886	1,364	1,931	1,658	18,112
	2016	4,053	2,058	1,798	1,498	977	948	1,796	2,169	1,924	2,617	2,538	2,795	25,171
	2017	4579	3585	2810	2436	1746	1867	1981	2,321	2,195	3,348	3,556	3,877	34,301
Spain	2015	288	423	850	902	241	179	364	793	578	926	767	430	6,741
	2016	412	454	818	630	499	404	1,347	2,092	1,555	2,013	1,285	746	12,255
	2017	478	748	913	1397	706	607	1590	2,938	1,730	2,397	1,578	871	15,953

TABLE 2.9: TOURIST ARRIVAL BY NATIONALITIES & MONTH, 2015-2017 (contd.)

Nationality	Year	Month											Total	
		Jan.	Feb.	Mar.	Apr.	May	Jun.	Jul.	Aug.	Sep.	Oct.	Nov.		Dec.
Sri Lanka	2015	170	4,612	8,024	1,126	240	92	889	11,858	4,985	4,311	6,809	1,251	44,367
	2016	185	7,065	8,709	868	467	121	1,048	17,019	7,875	5,965	6,787	1,412	57,521
	2017	329	7069	10434	1070	404	301	949	9,674	5,605	5,291	3,475	760	45,361
Thailand	2015	2,826	5,175	7,259	2,187	489	358	353	306	311	1,428	4,432	5,829	30,953
	2016	2,807	6,385	5,390	1,560	710	379	358	622	740	1,452	0	6,319	26,722
	2017	3981	8388	6455	2206	562	345	270	477	696	4,825	5,144	5,805	39,154
UK	2015	1,324	2,165	4,229	3,502	996	978	1,780	1,930	2,054	4,503	3,719	2,550	29,730
	2016	2,205	2,984	4,840	3,990	2,405	2,073	3,900	3,064	4,000	7,515	5,442	3,877	46,295
	2017	3395	4363	6,434	6,558	3,052	2,593	3093	2,973		7,883	6,802	3,912	51,058
USA	2015	2,240	2,949	4,928	4,099	2,706	2,532	2,484	2,576	3,582	6,154	4,858	3,579	42,687
	2016	3,627	4,144	5,545	5,821	4,990	4,549	4,356	3,433	6,035	5,981	0	5,164	53,645
	2017	5626	5847	8294	7578	6499	6317	3874	4,024	7,123	10,022	8,446	5,496	79,146
Others	2015	1,084	1,681	2,797	3,025	849	983	2,045	1,846	2,185	3,135	2,998	2,062	24,690
	2016	4,453	5,911	10,345	8,016	5,786	3,775	4,762	5,318	10,125	11,282	5,860	8,157	83,790
	2017	7495	10646	22219	17499	9614	9653	5664	7642	13613	22868	17168	10942	155023
Grand-Total	2015	38,616	58,523	79,187	65,729	17,569	18,368	22,967	38,606	39,050	56,584	58,304	45,467	538,970
	2016	42,235	60,821	76,444	60,214	46,683	38,852	48,115	66,341	74,670	89,281	72,990	76,356	753,002
	2017	62,632	84,061	106,291	88,591	62,773	55,956	42,240	73,778	68,634	112,492	99,804	82,966	940,218

Source: Department of Immigration

TABLE 2.10: TOURIST ARRIVAL BY ENTRY POINTS (LAND), 2017

Entry Point	Jan.	Feb.	March	April	May	June	July	Aug.	Sept.	Oct.	Nov.	Dec.	Total
Bhairahawa	10276	26277	28453	6414	1388	956	1913	11686	8480	18277	20588	16133	150841
Birgunj	202	126	157	77	59	50	38	29	63	79	118	102	1100
Dhangadhi	4	4	2	7	1	2	4	2	1	2	2	5	36
Kakadvitta	677	543	644	594	578	401	455	408	413	558	493	441	6205
Timure, Rasuwagadi	342	515	784	1151	2953	2172	2463	2303	1955	1847	1065	714	18264
Mahendranag ar,Kanchanpur	170	156	237	365	293	269	155	145	228	326	243	152	2739
Nepalgunj	31	30	28	43	45	43	34	24	30	72	34	42	456
Total Land	11702	27651	30305	8651	5317	3893	5062	14597	11170	21161	22543	17589	179641

Source: Department of Immigration

TABLE 2.11: TOURIST ARRIVAL BY COUNTRY AND MONTH (LAND), 2017

Country	Jan.	Feb.	March	April	May	June	July	August	Sept.	Oct.	Nov.	Dec.	Total
Australia	276	246	194	139	62	52	44	61	112	182	218	179	1765
Bangladesh	147	126	196	165	169	166	203	92	211	188	167	220	2050
Canada	95	110	127	104	34	28	36	27	26	119	120	114	940
China	1028	1516	1985	1495	3277	2394	2632	2386	2040	2022	1519	1362	23656
Cambodia	4	314	306	1	0	4	0	0	1	134	769	12	1545
France	69	130	183	156	108	48	61	77	84	313	200	127	1556
Germany	88	163	304	187	136	61	60	70	145	272	207	91	1784
Japan	108	310	207	73	46	32	31	37	81	139	129	173	1366
Malaysia	18	131	158	14	17	11	10	15	9	100	251	529	1263
Myanmar	2766	5268	5586	2736	46	7	19	18	46	2782	4789	4119	28182
Netherland	61	134	189	188	62	27	120	291	121	238	246	69	1746
Singapore	11	137	24	13	18	2	6	1	15	22	151	305	705
South Korea	1362	1057	677	164	131	78	85	133	182	559	1256	1462	7146
Spain	44	76	107	90	50	40	66	128	64	134	88	42	929
Srilanka	150	6987	11171	899	114	58	892	10279	6458	7167	3647	588	48410
Thailand	3728	8320	6082	732	193	253	58	168	244	3603	5190	5219	33790
U.k	135	222	331	368	144	96	127	161	173	316	252	146	2471
U.S.A	390	428	360	248	209	153	174	126	164	543	390	376	3561
Vietnam	57	830	818	82	10	13	99	6	385	793	1230	1167	5490
Other	1509	979	2063	815	395	340	253	343	533	1372	1088	1596	11286
Total Foreigners	12046	27484	31068	8669	5221	3863	4976	14419	11094	20998	21907	17896	179641

PART III

LENGTH OF STAY



Three year development plan (2017-2018) aimed to increase the length of stay to 14 days by 2017. It was ranging from 8 to 13.5 days in the past. The analysis of length of stay of 400,000 tourists estimated it as 12.6 days in the year 2017.

TABLE 3.1: TOURIST ARRIVAL AND AVERAGE LENGTH OF STAY, 1975-2017

Year	Number	Average Length of Stay	Year	Number	Average Length of Stay
1975	92,440	13.05	1997	421,857	10.49
1976	105,108	12.41	1998	463,684	10.76
1977	129,329	11.60	1999	491,504	12.28
1978	156,123	11.84	2000	463,646	11.88
1979	162,276	12.02	2001	361,237	11.93
1980	162,897	11.18	2002	275,468	7.92
1981	161,669	10.49	2003	338,132	9.60
1982	175,448	13.33	2004	385,297	13.51
1983	179,405	11.53	2005	375,398	9.09
1984	176,634	11.55	2006	383,926	10.20
1985	180,989	11.30	2007	526,705	11.96
1986	223,331	11.16	2008	500,277	11.78
1987	248,080	11.98	2009	509,956	11.32
1988	265,943	12.00	2010	602,867	12.67
1989	239,945	12.00	2011	736,215	13.12
1990	254,885	12.00	2012	803,092	12.16
1991	292,995	9.25	2013	797,616	12.60
1992	334,353	10.14	2014	790118	12.44
1993	293,567	11.94	2015	538970	13.16
1994	326,531	10.00	2016	753002	13.4
1995	363,395	11.27	2017	940218	12.6
1996	393,613	13.50			

Source: Department of Immigration

PART IV

PURPOSE OF VISIT



Number of tourist by purpose of visit is a major indicator for tourism sector output. This indicator is very useful for evaluation of characteristics, type and economic and social contributions made by tourists and to plan and manage infrastructure, services and market economy accordingly. It also shows inflow of high value tourists. Historical data shows More than 50 percent of the tourist arrived with purpose of holiday celebration and pleasure. Year 2017 shows higher proportion (70 %) visited nepal for holiday and pleasure followed by pilgrimage (15%), adventure (8%) and other purpose (7%).

TABLE 4.1: TOURIST ARRIVAL BY PURPOSE OF VISIT, 1993-2017

Year	Holiday Pleasure	Trekking & Mountaineering	Business	Pilgrimage	Official	Conv./ Conf.	Others	Not Specified	Total
1993	170,279	69,619	19,495	10,429	15,812	5,367	2,566	-	293,567
	(58.0)	(23.7)	(6.6)	(3.6)	(5.4)	(1.8)	(0.9)		(100.0)
1994	168,155	76,865	23,522	5,475	20,431	5,361	26,722	-	326,531
	(51.5)	(23.5)	(7.2)	(1.7)	(6.3)	(1.6)	(8.2)		(100.0)
1995	183,207	84,787	21,829	5,257	20,090	5,272	42,953	-	363,395
	(50.4)	(23.3)	(6.0)	(1.4)	(5.5)	(1.5)	(11.8)		(100.0)
1996	209,377	88,945	25,079	4,802	20,191	6,054	39,165	-	393,613
	(53.2)	(22.6)	(6.4)	(1.2)	(5.1)	(1.5)	(10.0)		(100.0)
1997	249,360	91,525	27,409	4,068	24,106	5,824	19,565	-	421,857
	(59.1)	(21.7)	(6.5)	(1.0)	(5.7)	(1.4)	(4.6)		(100.0)
1998	261,347	112,644	24,954	16,164	22,123	5,181	21,271	-	463,684
	(56.4)	(24.3)	(5.4)	(3.5)	(4.8)	(1.1)	(4.6)		(100.0)
1999	290,862	107,960	23,813	19,198	24,132	5,965	19,574	-	491,504
	(59.2)	(22.0)	(4.8)	(3.9)	(4.9)	(1.2)	(4.0)		(100.0)
2000	255,889	118,780	29,454	15,801	20,832	5,599	17,291	-	463,646
	(55.2)	(25.6)	(6.4)	(3.4)	(4.5)	(1.2)	(3.7)		(100.0)
2001	187,022	100,828	18,528	13,816	18,727	0	22,316	-	361,237
	(51.8)	(27.9)	(5.1)	(3.8)	(5.2)	(0.0)	(6.2)		(100.0)
2002	110,143	59,279	16,990	12,366	17,783	0	58,907	-	275,468
	(40.0)	(21.5)	(6.2)	(4.5)	(6.5)	(0.0)	(21.4)		(100.0)
2003	97,904	65,721	19,387	21,395	21,967	0	111,758	-	338,132
	(29.0)	(19.4)	(5.7)	(6.3)	(6.5)	(0.0)	(33.1)		(100.0)
2004	167,262	69,442	13,948	45,664	17,088	0	71,893	-	385,297
	(43.4)	(18.0)	(3.6)	(11.9)	(4.4)	(0.0)	(18.7)		(100.0)

TABLE 4.1: TOURIST ARRIVAL BY PURPOSE OF VISIT, 1993-2017 (contd.)

Year	Holiday Pleasure	Trekking & Mountain eering	Business	Pilgrimag e	Official	Conv./ Conf.	Others	Not Speci fied	Total
2005	160,259	61,488	21,992	47,621	16,859	0	67,179	-	375,398
	(42.7)	(16.4)	(5.9)	(12.7)	(4.5)	(0.0)	(17.9)		100.0
2006	145,802	66,931	21,066	59,298	18,063	0	72,766	-	383,926
	(27.7)	(12.7)	(4.0)	(11.3)	(3.4)	(0.0)	(13.8)		100.0
2007	217,815	101,320	24,487	52,594	21,670	8,019	78,644	22,156	526,705
	(41.4)	(19.2)	(4.6)	(10.0)	(4.1)	(1.5)	(14.9)	(4.2)	100.0
2008	148,180	104,822	23,039	45,091	43,044	6,938	99,634	29,529	500,277
	(29.6)	(21.0)	(4.6)	(9.0)	(8.6)	(1.4)	(19.9)	(5.9)	100.
2009	140,992	132,929	22,758	51,542	24,518	9,985	87,134	40,098	509,956
	(27.6)	(26.1)	(4.5)	(10.1)	(4.8)	(2.0)	(17.1)	(7.9)	100.0
2010	263,938	70,218	21,377	101,335	26,374	9,627	52,347	57,651	602,867
	(43.8)	(11.6)	(3.5)	(16.8)	(4.4)	(1.6)	(8.7)	(9.6)	100.0
2011	425,721	86,260	17,859	63,783	24,054	10,836	37,311	70,391	736,215
	(57.8)	(11.7)	(2.4)	(8.7)	(3.3)	(1.5)	(5.1)	(9.6)	100.0
2012	379,627	105,015	24,785	109,854	30,460	13,646	48,540	91,165	803,092
	(47.3)	(13.1)	(3.1)	(13.7)	(3.8)	(1.7)	(6.0)	(11.4)	100.
2013	437,891	97,309	30,309	40,678	39,881	15,952	62,214	73,381	797,616
	(54.9)	(12.2)	(3.8)	(5.1)	(5.0)	(2.0)	(7.8)	(9.2)	100.0
2014	395,849	97,185	24,494	98,765	32,395	13,432	53,728	74,271	790,118
	(50.1)	(12.3)	(3.1)	(12.5)	(4.1)	(1.7)	(6.8)	(9.4)	100.0
2015	3,86,065	9,162	20,876	14,996	21,479	9,038	77354		5,38,970
	71.63	1.70	3.87	2.78	3.99	1.68	14.35		100.0
2016	489,451	66,490	24,322	82,830	21,310	12,801	55,797		7,53,002
	65.0	8.83	3.23	11.0	2.83	1.7	7.41		100
2017	658153	75217	na	141033	na	na	65815		940218
	70.0	8.0		15.0			7		100

Note: estimated figure.

CHART 4.1: PURPOSE OF VISIT 2017



PART V

TREKKING AND EXPEDITION



Nepal is renowned for adventure tourism due to its prominent peaks. The number of expedition permitted teams has reached to 291 while 2277 in persons. Out of them 1225 succeeded summit to various peaks composed by 692 foreign and 533 Nepalese.

The highest number of climbers comes from USA, Germany and United Kingdom respectively.

TABLE 5.1: NUMBER OF TREKKERS IN DIFFERENT TREKKING AREAS BY MONTH, 2017

TIMS	Free Individual Trekkers		Group Trekkers		Total Trekkers		Total Trekkers
Months	Non SAARC Nationals	SAARC Nationals	Non SAARC Nationals	SAARC Nationals	Non SAARC Nationals	SAARC Nationals	
January	1976	63	4600	0	6576	63	6639
February	2986	62	6900	400	9886	462	10348
March	7953	248	13800	1800	21753	2048	23801
April	4111	603	19900	3300	24011	3903	27914
May	2632	571	8326	6700	10958	7271	18229
June	569	1036	1700	2500	2269	3536	5805
July	1114	339	3400	500	4514	839	5353
August	664	29	3900	800	4564	829	5393
September	3321	770	13600	2100	16921	2870	19791
October	5286	424	22000	2000	27286	2424	29710
November	2941	80	12400	1500	15341	1580	16921
December	1054	37	5300	0	6354	37	6391
Total	34607	4262	115826	21600	150433	25862	176295

Source: Nepal Tourism Board

TABLE 5.2: NUMBER OF TREKKERS IN DIFFERENT TREKKING AREA, 2001-2017.

Year	Controlled Area									Total
	Mustang	Lower Dolpa	Upper Dolpa	Humla	Manaslu	Kanchanjunga	T.Valley	Narphu	Others	
2001	922	488	119	337	798	690				3,354
2002	536	0	119	339	428	478			79	1,979
2003	572	0	369	223	645	402			154	2,365
2004	825	329	77	577	682	458			275	3,223
2005	661	200	81	782	544	167			279	2,714
2006	248	225	92	1,256	561	335			395	3,112
2007	1,282	419	198	1,542	895	404			587	5,327
2008	838	709	383	1,065	1,443	1,490			520	6,448
2009	1,659	739	313	1,177	1,635	508			948	6,979
2010	2,162	785	358	1,633	2,162	488			1,427	9,015
2011	2,950	808	397	1,758	2,813	591			1,398	10,715
2012	2,965	982	536	1,508	3,319	635	780	515	392	11,632
2013	2,862	585	338	1,603	4,439	837	1,179	862	232	12,937
2014	3883	1117	469	492	3764	777	1454	776	2333	15065
2015	2673	788	328	1346	2134	731	636	770	273	9679
2016	3984	1023	531	10105	4650	502	1219	903	356	23569
2017					5745	479				

Source:

TABLE 5.3: TREKKERS IN PROTECTED AREAS BY MONTH, 2017

Month	MUSTANG	MANASALU	NAR PHU	TSUM VALLEY	KANCHANJIANGHA	SIMIKOT	MUGU	DOLAKHA	LOWER DOLPA	UPPEER DOLPA	SANKHUWASABHA	Others	Total
January	16	20	0	19	2	2	2	0	2	0	0	0	63
February	24	78	6	41	12	2	0	0	0	0	5	4	172
March	133	698	66	204	99	26	2	0	12	0	21	6	1267
April	388	1061	127	296	227	175	12	8	96	34	12	59	2495
May	635	276	50	57	9	3306	4	3	84	54	0	3	4481
June	144	27	14	0	2	5430	0	0	28	23	0	0	5668
July	340	41	40	8	0	1326	4	0	38	29	0	8	1834
August	433	118	22	14	17	2461	4	0	42	25	0	30	3166
September	773	709	152	139	98	571	41	10	348	164	21	71	3097
October	1056	2454	518	628	428	61	9	38	225	92	64	91	5664
November	268	1056	116	255	109	22	0	4	39	4	13	11	1897
December	30	94	4	20	5	16	3	7	10	0	0	0	189
Total	4240	6632	1115	1681	1008	13398	81	70	924	425	136	283	29993

Source: Department of Immigration.

Table 5.4: NUMBER OF FOREIGNERS VISITED AT NATIONAL PARKS AND CONSERVATION AREAS BY MONTH, FY 2073/74

Protected Area	Shrawan	Bhadra	Aswin	Kartik	Mansir	Paush	Magh	Fagun	Chaitra	Baisakh	Jesth	Asar	Total
Shivapuri Nagarjun National Park	21299	18984	9585	18409	16022	15222	13415	18686	19211	18338	19906	16670	205747
Chitwan National Park	7442	6023	10108	15808	12259	12165	11562	13260	17451	15076	12201	5770	139125
Sagarmatha National Park	376	1408	7157	9063	3241	2068	1064	2708	7778	7993	1854	402	45112
Bardiya National Park	309	414	1767	2673	1507	1254	1744	2441	2227	2295	929	400	17959
Langtang National Park	170	281	944	1572	658	329	303	569	1559	1194	352	323	8254
Makalu Barun National Park	0	19	218	702	166	4	4	34	165	199	16	0	1537
Rara National Park							82	27	38	13	34	7	201
Khaptad National Park	0	2	1	5	3	0	0	3	5	4	2	1	26
Banke National Park									4				4
Shey Phoksundo National Park	15	99	205	100	8	1	0	3	15	43	24	22	535
Shukla Phata Wildlife Reserve	8	19	157	282	273	232	215	217	459	458	261	59	2640
Parsa Wildlife Reserve	2	37	12	163	73	51	23	37	9	34	29	7	417
Koshi Tappu	653	931	704	1212	965	123	1023	419	811	1874	958	1579	11252

Protected Area	Shrawan	Bhadra	Aswin	Kartik	Mansir	Paush	Magh	Fagun	Chaitra	Baisakh	Jesth	Asar	Total
Wildlife Reserve													
Dhorpatan Hunting Reserve	0	14	15	40	0	0	15	6	11	55	0	7	163
Apinappa Consersation Area	0	0	0	0	3	0	0	7	0	0	0	9	19
Krishnasar Conservation ARea	1002	982	1498	1394	2142	2040	1763	1752	1599	1840	892	793	17697
Kanchanjunga Conservation Area	0	14	133	237	7	0	0	7	72	9	0	0	479
Annapurna Conservation Area	5131	7541	19517	19220	8533	6572	5833	10680	24222	19019	11695	6446	144409
Manaslu Conservation Area	38	282	1555	1371	236	40	37	312	1219	543	84	28	5745
Gaurishankar Conservation Area	12	49	283	709	457	128	64	128	363	400	151	36	2770
Total	36457	37099	53869	72900	46553	40229	37147	51286	77218	69387	49388	32559	604091

Source: Department of National Park and Wildlife Conservation

TABLE 5.5: NUMBER OF FOREIGN VISITORS TO NATIONAL PARKS & CONSERVATION AREAS, 2069/70- 073/74

Protected Area	2069/70	2070/71	2071/72	2072/73	2073/74
Chitwan National Park	153749	173425	178257	87391	139125
Bardiya National Park	12974	13207	13548	10638	17959
Langtang National Park	13370	12552	12265	5016	8254
Sagarmatha National Park	36550	35157	34412	27794	45112
Rara National Park	165	181	143	132	201
Shey Phoksundo National Park	620	417	383	431	535
Khaptad National Park	19	47	2	21	26
Makalu Barun National Park	1523	1083	1270	828	1537
Shivapuri Nagarjun National Park	165904	180464	138084	143352	205747
Banke National Park	0	0	0	0	4
Shukla Phata Wildlife Reserve	471	984	824	1920	2640
Koshi Tappu Wildlife Reserve	4446	7349	8719	9247	11252
Parsa Wildlife Reserve	192	379	263	235	417
Dhorpatan Hunting Reserve	88	89	0	91	163
Krishnasar Conservation Area	54	0	6028	14050	17697
Apinappa Conservation Area	0	0	3	29	19
Kanchanjunga Conservation Area	606	0	0	502	479
Annapurna Conservation Area	113213	124998	114418	83419	144409
Manaslu Conservation Area	4268	5331	5658	2287	5745
Gaurishanker Conservation Area	1993	2914	2818	1840	2770
Total	508212	555663	514277	387383	604091

Source: Department of National Park and Wildlife Conservation

TABLE 5.7: NUMBER OF EXPEDITION TEAMS, MEMBERS & SUMMITEERS BY PEAK, 2017

SN	Mountain	permit Issue			Nepali Summiteers			Foreigner Summiteers			Total summiteers		
		Female	Male	Total	Female	Male	Total	Female	Male	Total	Female	Male	Total
1	Aichyn (6055 m.)	1	10	11	0	4	4	1	5	6	1	9	10
2	Ama Dablam (6814 m.)	58	327	385	3	47	50	17	97	114	20	144	164
3	Annapurna 1 (8091 m.)	2	20	22	0	0	0	1	5	6	1	5	6
4	Annapurna 4 (7525 m.)	0	2	2	0	0	0	0	0	0	0	0	0
5	Arniko Chuli (6039 m.)	8	14	22	0	0	0	0	3	3	0	3	3
6	Baden Powell Scout Peak (Urkema Peak) # (5890 m.)	2	8	10	0	3	3	2	1	3	2	4	6
7	Barun Tse (7129 m.)	15	45	60	0	9	9	4	11	15	4	20	24
8	Bhrikuti # (6364 m.)	3	15	18	0	1	1	0	1	1	0	2	2
9	Bhrikuti (6476 m.)	8	16	24	0	0	0	0	0	0	0	0	0
10	Burke Khang (6942 m.)	0	11	11	0	0	0	0	1	1	0	1	1
11	Chamlang (7319 m.)	0	4	4	0	0	0	0	0	0	0	0	0
12	Chhopa Bamare (6109 m.)	3	6	9	0	0	0	0	0	0	0	0	0
13	Chukyima Go (6258 m.)	0	3	3	0	0	0	0	2	2	0	2	2
14	Danfe Sail (6103 m.)	4	11	15	0	3	3	2	5	7	2	8	10
15	Dhaulagiri I (8167 m.)	10	118	128	0	25	25	8	28	36	8	53	61
16	Dolma Khang (6332 m.)	0	4	4	0	3	3	0	1	1	0	4	4
17	Gaugiri (6110 m.)	14	16	30	0	0	0	8	5	13	8	5	13

SN	Mountain	permit Issue			Nepali Summiteers			Foreigner Summiteers			Total summiteers		
		Female	Male	Total	Female	Male	Total	Female	Male	Total	Female	Male	Total
18	Gorakh khang (6254 m.)	2	9	11	0	0	0	0	0	0	0	0	0
19	Gyaji Khang (7074 m.)	1	12	13	0	2	2	1	10	11	1	12	13
20	Himlung East (6932 m.)	2	20	22	0	2	2	1	1	2	1	3	4
21	Himlung Himal (7126 m.)	15	83	98	0	20	20	8	27	35	8	47	55
22	Jabou Ri (6166 m.)	1	5	6	0	0	0	0	0	0	0	0	0
23	Jobo Rinjang (6666 m.)	0	4	4	0	0	0	0	0	0	0	0	0
24	Kanchanjunga (Main) (8586 m.)	5	15	20	0	0	0	0	0	0	0	0	0
25	Kanchanjunga (South) (8476 m.)	1	6	7	0	0	0	0	0	0	0	0	0
26	Khangchung/UIAA Peak (6063 m.)	0	3	3	0	1	1	0	2	2	0	3	3
27	Khumjung (6699 m.)	1	3	4	0	0	0	0	0	0	0	0	0
28	Kyungya Ri 1 (6599 m.)	0	12	12	0	2	2	0	2	2	0	4	4
29	Langdak (6220 m.)	2	9	11	0	1	1	2	7	9	2	8	10
30	Langdung (6326 m.)	2	10	12	1	3	4	0	0	0	1	3	4
31	Langju (6426 m.)	0	3	3	0	0	0	0	3	3	0	3	3
32	Lhotse (8516 m.)	16	162	178	0	23	23	8	42	50	8	65	73
33	Makalu I (8463 m.)	9	75	84	0	14	14	4	7	11	4	21	25
34	Malanphulan (6573 m.)	0	5	5	0	0	0	0	0	0	0	0	0
35	Manaslu (8163 m.)	45	367	412	2	92	94	38	133	171	40	225	265
36	Mansail South (6251 m.)	7	6	13	0	0	0	3	1	4	3	1	4

SN	Mountain	permit Issue			Nepali Summiteers			Foreigner Summiteers			Total summiteers		
		Female	Male	Total	Female	Male	Total	Female	Male	Total	Female	Male	Total
37	Mukot Himal (6087 m.)	3	7	10	0	0	0	0	0	0	0	0	0
38	Mustang Himal I (6195 m.)	72	73	145	0	0	0	0	0	0	0	0	0
39	Nagpai Gosum II (7296 m.)	0	6	6	0	0	0	0	1	1	0	1	1
40	Norbu Kang (6005 m.)	3	6	9	0	0	0	0	0	0	0	0	0
41	Nuptse (7855 m.)	5	35	40	0	0	0	0	3	3	0	3	3
42	Panbari (6887 m.)	1	5	6	0	0	0	0	0	0	0	0	0
43	Pandra (6850 m.)	0	3	3	0	0	0	0	0	0	0	0	0
44	Peri Himal (6296 m.)	3	10	13	0	0	0	0	0	0	0	0	0
45	Phungi (6538 m.)	0	2	2	0	0	0	0	2	2	0	2	2
46	Pumori (7161 m.)	1	10	11	0	0	0	0	0	0	0	0	0
47	Punchen Himal (6049 m.)	0	5	5	0	0	0	0	0	0	0	0	0
48	Putha Hiunchuli (7246 m.)	6	53	59	0	8	8	3	14	17	3	22	25
49	Ratna Chuli (7128 m.)	0	4	4	0	0	0	0	0	0	0	0	0
50	Raungsiyar (6224 m.)	0	7	7	0	0	0	0	0	0	0	0	0
51	Sagarmatha (Mt. Everest) (8848 m.)	60	989	1049	3	239	242	31	152	183	34	391	425
52	Saribung (6346 m.)	58	131	189	0	13	13	19	56	75	19	69	88
53	Sharphu IV (6433 m.)	1	3	4	0	0	0	0	0	0	0	0	0
54	Shey Shikhar (6139 m.)	6	15	21	0	0	0	0	0	0	0	0	0
55	Tare Khang (7069 m.)	0	2	2	0	0	0	0	0	0	0	0	0

SN	Mountain	permit Issue			Nepali Summiteers			Foreigner Summiteers			Total summiteers		
		Female	Male	Total	Female	Male	Total	Female	Male	Total	Female	Male	Total
56	Tawoche (6495 m.)	0	4	4	0	2	2	0	2	2	0	4	4
57	Tengi Ragi Tau (6948 m.)	0	4	4	0	0	0	0	0	0	0	0	0
58	Tengkangpoche (6500 m.)	1	7	8	0	0	0	0	0	0	0	0	0
59	Thapa Peak(Dhampus) (6012 m.)	23	66	89	0	2	2	3	12	15	3	14	17
60	Tharke Khang (6710 m.)	3	10	13	0	4	4	2	1	3	2	5	7
61	Thorong Peak (6144 m.)	1	13	14	0	1	1	0	2	2	0	3	3
62	Tilicho Peak (7134 m.)	6	12	18	0	0	0	0	3	3	0	3	3
63	Tobsar Peak (6100 m.)	2	11	13	0	3	3	0	0	0	0	3	3
64	Tsartse (6398 m.)	0	3	3	0	0	0	0	0	0	0	0	0
65	Tukuhe Peak (6920 m.)	1	8	9	0	0	0	0	0	0	0	0	0
66	Yalung Kang (8505 m.)	1	4	5	0	0	0	0	0	0	0	0	0
67	Yanme Kang (6206 m.)	0	2	2	0	0	0	0	2	2	0	2	2
68	Yaupa (6432 m.)	2	4	6	0	0	0	0	0	0	0	0	0
Grand Total		496	2953	3449	9	527	536	166	650	816	175	1177	1352

Source: Department of Tourism

TABLE 5.9: NUMBER OF CLIMBERS BY COUNTRY, 2017

SN	Country	Permit issued			summitted		
		Female	Male	Total	Female	Male	Total
1	Andorra	1	1	2	0	0	0
2	Argentina	0	9	9	0	1	1
3	Australia	21	52	73	8	18	26
4	Austria	16	56	72	3	16	19
5	Bangladesh	1	0	1	0	0	0
6	Belgium	2	13	15	0	2	2
7	Bhutan	0	1	1	0	0	0
8	Brazil	1	2	3		1	1
9	Britain	3	10	13	1	3	4
10	Bulgaria	1	5	6	0	4	4
11	Canada	9	29	38	1	7	8
12	Chile	1	5	6	1	4	5
13	China	35	100	135	28	54	82
14	Czech Republic	2	39	41	1	17	18
15	Denmark	0	6	6	0	2	2
16	Dominican Republic	0	2	2	0	1	1
17	Ecuador	0	5	5	0	3	3
18	England	0	1	1	0	1	1
19	Estonia	4	1	5	0	0	0
20	Finland	2	2	4	0	1	1
21	France	98	183	281	24	61	85
22	Georgia	0	2	2	0	0	0
23	Germany	23	95	118	14	45	59
24	Greece	1	3	4	0	3	3
25	Guatemala	1	0	1	0	0	0
26	Hungary	4	6	10	3	1	4
27	Iceland	1	1	2	1	1	2
28	India	9	113	122	3	48	51
29	Indonesia	2	0	2	2	0	2
30	Iran	1	19	20	1	17	18
31	Ireland	2	21	23	2	9	11
32	Israel	1	5	6		2	2
33	Italy	15	56	71	3	24	27

SN	Country	Permit issued			summitted		
		Female	Male	Total	Female	Male	Total
34	Japan	17	75	92	7	22	29
35	Kazakhstan	0	1	1	0	1	1
36	Korea	1	17	18	0	7	7
37	Kosovo	5	1	6	4	1	5
38	Kuwait	0	1	1	0	0	0
39	Latvia	1	0	1	1	0	1
40	Lithuania	0	2	2	0	1	1
41	Malaysia	2	7	9	0	2	2
42	Malta	1	2	3	0	0	0
43	Mexico	2	18	20	2	6	8
44	Morocco	2	0	2	2	0	2
45	Nepal	12	1224	1236	9	527	536
46	Netherlands (Holland)	4	17	21	4	12	16
47	New Zealand	6	21	27	3	6	9
48	Norway	18	23	41	10	14	24
49	Pakistan		4	4		1	1
50	Peru	1	2	3	1	1	2
51	Poland	13	52	65	3	22	25
52	Portugal	2	2	4	0	0	0
53	Romania	1	8	9	0	2	2
54	Russia	11	63	74	2	39	41
55	Serbia	0	2	2	0	1	1
56	Singapore	4	13	17	1	1	2
57	Slovakia	1	15	16	0	5	5
58	Slovenia	1	7	8	1	2	3
59	South Africa	2	4	6	1	0	1
60	South Korea	4	31	35	1	3	4
61	Spain	17	75	92	2	24	26
62	Sri Lanka	0	2	2	0	0	0
63	Swaziland	1	3	4	1	2	3
64	Sweden	5	8	13	1	2	3
65	Switzerland	37	71	108	3	12	15
66	Thailand	1	0	1	0	0	0
67	Turkey	0	1	1	0	0	0

SN	Country	Permit issued			summitted		
		Female	Male	Total	Female	Male	Total
68	U.S.of America	44	194	238	15	73	88
69	Ukraine	0	16	16	0	12	12
70	United Arab Emirates	0	1	1	0	0	0
71	United Kingdom	22	126	148	5	30	35
72	Venezuela	1	1	2	0	0	0
74	Grand Total	496	2953	3449	175	1177	1352

Source: Department of Tourism

TABLE 5.11: NUMBER OF SUMMITTEERS BY COUNTRY AND MOUNTAIN, 2017

Mountain	Argentina	Australia	Austria	Belgium	Brazil	Britain	Bulgaria	Canada	Chile	China	Czech Republic	Denmark	Dominican Republic	Ecuador	England	Finland	France	Germany	Greece	Hungary	
Aichyn (6055 m.)																					
Ama Dablam (6814 m.)		4	8					4	1	4	1	1					1	8	1	1	
Annapurna 1 (8091 m.)									2												
Arniko Chuli (6039 m.)																	1				
Baden Powell Scout Peak (Urkema Peak) # (5890 m.)																					
Barun Tse (7129 m.)		5	2															1			
Bhrikuti # (6364 m.)																	1				
Burke Khang (6942 m.)																					
Chukyima Go (6258 m.)																					
Danfe Sail (6103 m.)																	7				
Dhaulagiri I (8167 m.)		1					1		2	2				1			1				
Dolma Khang (6332 m.)																					
Gaugiri (6110 m.)																	12				
Gyaji Khang (7074 m.)											9										
Himlung East (6932 m.)																	2				
Himlung Himal (7126 m.)		1	3								8				1		1	13		2	
Khangchung/ UIAA Peak (6063 m.)						1															
Kyungya Ri 1 (6599 m.)																					
Langdak (6220 m.)																					

Mountain	Argentina	Australia	Austria	Belgium	Brazil	Britain	Bulgaria	Canada	Chile	China	Czech Republic	Denmark	Dominican Republic	Ecuador	England	Finland	France	Germany	Greece	Hungary
Langdung (6326 m.)																				
Langju (6426 m.)																				
Lhotse (8516 m.)		2		1			1	1		8							1	1		
Makalu I (8463 m.)		2						1		1				1			1			
Manaslu (8163 m.)	1	5	1				1			43							4	9		1
Mansail South (6251 m.)																	4			
Nagpai Gosum II (7296 m.)																		1		
Nuptse (7855 m.)																	3			
Phungi (6538 m.)																				
Putha Hiunchuli (7246 m.)			2														4			
Sagarmatha (Mt. Everest) (8848 m.)		6	1		1		1	2		24			1	1			1	3	2	
Saribung (6346 m.)			2	1								1				1	33	22		
Tawoche (6495 m.)																				
Thapa Peak (Dhampus) (6012 m.)							3										4			
Tharke Khang (6710 m.)																				
Thorong Peak (6144 m.)																	2			
Tilicho Peak (7134 m.)																		1		
Tobsar Peak (6100 m.)																				
Yanme Kang (6206 m.)																	2			
Grand Total	1	26	19	2	1	4	4	8	5	82	18	2	1	3	1	1	85	59	3	4

Mountain	Iceland	India	Indonesia	Iran	Ireland	Israel	Italy	Japan	Kazakhstan	Korea	Kosovo	Latvia	Lithuania	Malaysia	Mexico	Morocco	Nepal	Netherlands New Zealand	Norway
Aichyn (6055 m.)								6									4		
Ama Dablam (6814 m.)					3	1	5	2		3	1	1	1				50	1	7
Annapurna 1 (8091 m.)							2												
Arniko Chuli (6039 m.)																			
Baden Powell Scout Peak																	3		
Barun Tse (7129 m.)					1												9	1	
Bhrikuti # (6364 m.)																	1		
Burke Khang (6942 m.)					1														
Chukyima Go (6258 m.)																			
Danfe Sail (6103 m.)																	3		
Dhaulagiri I (8167 m.)		10		2	1		3										25		3
Dolma Khang (6332 m.)																	3		1
Gaugiri (6110 m.)																			
Gyaji Khang (7074 m.)							2										2		
Himlung East (6932 m.)																	2		
Himlung Himal (7126 m.)							3										20		
Khangchung/																	1		
Kyungya Ri 1 (6599 m.)										2							2		
Langdak (6220 m.)																	1	9	
Langdung (6326 m.)																	4		

Mountain	Iceland	India	Indonesia	Iran	Ireland	Israel	Italy	Japan	Kazakhstan	Korea	Kosovo	Latvia	Lithuania	Malaysia	Mexico	Morocco	Nepal	Netherlands New Zealand	Norway	
Langju (6426 m.)								3												
Lhotse (8516 m.)	1	3		5	1		2	5		1							23			2
Makalu I (8463 m.)								1									14			
Manaslu (8163 m.)		4		9		1	6	2	1		1			1	6		94	2	2	3
Mansail South (6251 m.)																				
Nagpai Gosum II (7296 m.)																				
Nuptse (7855 m.)																				
Phungi (6538 m.)																				
Putha Hiunchuli (7246 m.)		2															8			
Sagarmatha (Mt. Everest) (8848 m.)	1	31		2	4		2	8		1	3			1	2	2	242		4	11
Saribung (6346 m.)							2										13	3		
Tawoche (6495 m.)								2									2			
Thapa Peak		1	2														2			
Tharke Khang (6710 m.)																	4			
Thorong Peak (6144 m.)																	1			
Tilicho Peak (7134 m.)																				
Tobsar Peak (6100 m.)																	3			
Yanme Kang (6206 m.)																				
Grand Total	2	51	2	18	11	2	27	29	1	7	5	1	1	2	8	2	536	16	9	24

Mountain	Pakistan	Peru	Poland	Romania	Russia	Serbia	Singapore	Slovakia	Slovenia	South Africa	South Korea	Spain	Swaziland	Sweden	Switzerland	U.S. A	Ukraine	United Kingdom	Grand Total
Aichyn (6055 m.)																			10
Ama Dablam (6814 m.)			9		10				2			13			2	11	6	2	164
Annapurna 1 (8091 m.)												2							6
Arniko Chuli (6039 m.)			1															1	3
Baden Powell Scout Peak																		3	6
Barun Tse (7129 m.)									1			1						3	24
Bhrikuti # (6364 m.)																			2
Burke Khang (6942 m.)																			1
Chukyima Go (6258 m.)																2			2
Danfe Sail (6103 m.)																			10
Dhaulagiri I (8167 m.)			1		1		1	2							1	2		1	61
Dolma Khang (6332 m.)																			4
Gaugiri (6110 m.)															1				13
Gyaji Khang (7074 m.)																			13
Himlung East (6932 m.)																			4
Himlung Himal (7126 m.)								1										2	55
Khangchung/																		1	3
Kyungya Ri 1 (6599 m.)																			4
Langdak (6220 m.)																			10

Mountain	Pakistan	Peru	Poland	Romania	Russia	Serbia	Singapore	Slovakia	Slovenia	South Africa	South Korea	Spain	Swaziland	Sweden	Switzerland	U.S.A	Ukraine	United Kingdom	Grand Total
Langdung (6326 m.)																			4
Langju (6426 m.)																			3
Lhotse (8516 m.)			4			1						1		2		4		3	73
Makalu I (8463 m.)																1		3	25
Manaslu (8163 m.)		1	7	1	26						3	8		1	7	6	6	2	265
Mansail South (6251 m.)																			4
Nagpai Gosum II (7296 m.)																			1
Nuptse (7855 m.)																			3
Phungi (6538 m.)					2														2
Putha Hiunchuli (7246 m.)																9			25
Sagarmatha (Mt. Everest) (8848 m.)	1	1	2	1			1			1	1	1				47		12	425
Saribung (6346 m.)													3		4	2		1	88
Tawoche (6495 m.)																			4
Thapa Peak					2			2									1		17
Tharke Khang (6710 m.)																3			7
Thorong Peak (6144 m.)																			3
Tilicho Peak (7134 m.)			1															1	3
Tobsar Peak (6100 m.)																			3
Yanme Kang (6206 m.)																			2
Grand Total	1	2	25	2	41	1	2	5	3	1	4	26	3	3	15	88	12	35	1352

Source: Department of Tourism

TABLE 5.10: NUMBER OF EXPEDITION TEAM MEMBERS PAYING ROYALTY BY PEAKS, 2017

Mountain	No. of Member	Royalty (\$)	Royalty (Rs.)
Aichyn (6055 m.)	7	0	0
Ama Dablam (6814 m.)	328	127250	14187881
Annapurna 1 (8091 m.)	16	27000	2815740
Annapurna 4 (7525 m.)	2	600	62580
Arniko Chuli (6039 m.)	22	2750	282843.75
Baden Powell Scout Peak	10	1250	129100
Barun Tse (7129 m.)	51	13500	1399962.5
Bhrikuti # (6364 m.)	17	2125	218487.5
Bhrikuti (6476 m.)	24	4875	498406.25
Burke Khang (6942 m.)	5	1200	124420
Chamlang (7319 m.)	3	1500	156650
Chhopa Bamare (6109 m.)	9	630	64712
Chukyima Go (6258 m.)	3	375	38512.5
Danfe Sail (6103 m.)	12	0	0
Dhaulagiri I (8167 m.)	73	120600	12457525
Dolma Khang (6332 m.)	1	125	12956
Gaugiri (6110 m.)	26	3185	333540
Gorakh khang (6254 m.)	10	0	0
Gyaji Khang (7074 m.)	11	2750	280775
Himlung East (6932 m.)	11	4400	454520
Himlung Himal (7126 m.)	75	19750	2049487.5
Jabou Ri (6166 m.)	6	1500	154500
Jobo Rinjang (6666 m.)	4	800	80320
Kanchanjunga (Main) (8586 m.)	17	25200	2644500
Kanchanjunga (South) (8476 m.)	4	7200	746280
Khangchung/UIAA Peak (6063 m.)	3	210	21604
Khumjung (6699 m.)	4	800	82880
Kyungya Ri 1 (6599 m.)	10	2000	207920

Mountain	No. of Member	Royalty (\$)	Royalty (Rs.)
Langdak (6220 m.)	10	1250	130375
Langdung (6326 m.)	12	1000	107031.25
Langju (6426 m.)	3	375	38306.25
Lhotse (8516 m.)	120	162178	16773022.5
Makalu I (8463 m.)	51	72000	7462280
Malanphulan (6573 m.)	2	800	82920
Manaslu (8163 m.)	267	245700	35966825
Mansail South (6251 m.)	11	2000	205562.5
Mukot Himal (6087 m.)	9	1125	116425
Mustang Himal I (6195 m.)	118	12935	1209277.5
Nagpai Gosum II (7296 m.)	6	1500	153850
Norbu Kang (6005 m.)	9	0	0
Nuptse (7855 m.)	37	20150	2082022.5
Panbari (6887 m.)	6	1200	122520
Pandra (6850 m.)	3	600	611620
Peri Himal (6296 m.)	14	1775	181212.5
Phungi (6538 m.)	2	400	41660
Pumori (7161 m.)	9	3750	394050
Punchen Himal (6049 m.)	2	500	51400
Putha Hiunchuli (7246 m.)	45	14250	1461231
Ratna Chuli (7128 m.)	2	1000	103000
Raungsiyar (6224 m.)	7	875	90612
Sagarmatha (Mt. Everest) (8848 m.)	377	2923500	303496660
Saribung (6346 m.)	175	22405	2270265.75
Sharphu IV (6433 m.)	3	750	77362.5
Shey Shikhar (6139 m.)	19	0	0
Tare Khang (7069 m.)	2	500	16712
Tawoche (6495 m.)	2	400	41360
Tengi Ragi Tau (6948 m.)	3	600	61260
Tengkangpoche (6500 m.)	5	1250	130537.5

Mountain	No. of Member	Royalty (\$)	Royalty (Rs.)
Thapa Peak(Dhampus) (6012 m.)	79	10590	1084136.5
Tharke Khang (6710 m.)	9	1800	186570
Thorong Peak (6144 m.)	11	2000	205812.5
Tilicho Peak (7134 m.)	18	5500	569925
Tobsar Peak (6100 m.)	12	1000	112300
Tsartse (6398 m.)	3	375	38125
Tukucho Peak (6920 m.)	3	1200	123300
Yalung Kang (8505 m.)	2	3600	373140
Yanme Kang (6206 m.)	2	250	26037.5
Yaupa (6432 m.)	6	1500	154800
Grand Total	2240	3894158	415859610.3

Source: Department of Tourism

TABLE 5.11: NUMBER OF CLIMBERS BY PEAK, 2017 (Permit Issued By Nepal Mountaineering Association)

Country	Mt. Cholatse	Kyazo Ri	Mt. Nirekha	Mt. Langsisa Ri	Mt. Ombigaichen	Mt. Bokta	Mt. Chekigo	Mt. Phari Lapcha	Mt. Lobuje West	Mt. Larkya Peak	Mt. ABI	Mt. Yubra Himnal	Hiunchuli	Singu Chuli (Fruited Peak)	Mera Peak	Kusum Kangru	Kwangde	Chulu West	Chulu East	Inja Tse (Island Peak)	Pharchamo	Lobuje	Ramdung	Pisang	Kongma Tse (Mehara Peak)	Ganja-la Chuli (Naya Kangra)	Paldor Peak	Total
Albania	0	0	0	0	1	0	0	0	0	0	0	0	0	0	0	0	0	0	0	0	0	0	0	0	0	0	0	1
Andorra	0	0	0	0	0	0	0	0	0	0	0	0	0	0	1	0	0	0	0	2	0	0	0	0	0	0	0	3
Argentina	0	0	0	0	0	0	0	0	0	0	0	0	0	0	4	0	0	0	0	24	0	0	0	0	0	1	0	29
Australia	4	5	0	0	0	0	0	0	2	4	5	0	0	0	10 4	0	0	7	2	180	0	4 4	9	6	0	4	0	376
Austria	2	8	0	0	0	0	0	0	0	7	1	0	0	7	81	0	0	1	3	39	24	2 0	0	4	0	1	0	198
Brazil	0	0	0	0	0	0	0	0	0	0	0	0	0	0	2	0	0	0	0	4	0	1	0	0	0	0	0	7
Brunei	0	0	0	0	0	0	0	0	0	0	0	0	0	0	1	0	0	0	0	0	0	0	0	0	0	0	0	1
Bulgeria	0	0	0	0	0	0	0	0	0	0	0	0	0	0	1	0	0	0	0	11	0	0	0	0	0	3	0	15
Bangladesh	0	0	0	0	0	0	0	0	0	5	0	0	0	0	4	0	0	0	0	0	0	0	0	0	0	0	0	9
Belarus	0	0	0	0	0	0	0	0	0	0	0	0	0	0	1	0	0	0	1	0	0	0	0	0	0	1	0	3
Belgium	2	1	0	0	0	0	0	0	0	0	0	0	0	0	18	0	0	3	0	23	0	2	0	1	0	0	0	50
Canada	2	0	0	0	1	0	0	0	2	0	1	0	0	1	40	0	0	2	1	60	0	3 4	0	0	0	0	0	144
China	0	0	0	0	0	0	0	0	0	0	0	0	0	0	4	0	0	0	0	169	0	2 7	0	0	0	0	0	200
Colombia	1	0	0	0	0	0	0	0	0	0	0	0	0	0	0	0	0	0	0	1	0	0	0	0	0	0	0	2

Country	Mt. Cholatse	Kyazo Ri	Mt. Nirekha	Mt. Langsisa Ri	Mt. Ombigaichen	Mt. Bokta	Mt. Chekigo	Mt. Phari Lapcha	Mt. Lobuje West	Mt. Larkya Peak	Mt. ABI	Mt. Yubra Himal	Hiunchuli	Singu Chuli (Fluted Peak)	Mera Peak	Kusum Kangru	Kwangde	Chulu West	Chulu East	Imja Tse (Island Peak)	Pharchamo	Lobuje	Ramdung	Pisang	Kongma Tse (Mehara Peak)	Ganja-la Chuli (Naya Kanga)	Paldor Peak	Total
Croatia	0	0	0	0	0	0	0	0	0	0	0	0	0	0	18	0	0	0	0	2	0	0	0	0	0	0	0	20
Czech Republic	0	1	0	0	0	0	0	0	0	5	0	0	0	0	23	0	0	4	3	35	3	4	0	1	0	0	0	79
Cyprus	0	0	0	0	0	0	0	0	0	0	0	0	0	0	0	0	0	0	0	1	0	0	0	0	0	0	0	1
Denmark	0	0	2	0	0	0	0	0	0	3	0	0	0	0	26	0	0	0	1	34	0	5	0	1	0	0	0	72
Dominican Republic	0	0	0	0	0	0	0	0	0	0	0	0	0	0	0	0	0	0	0	0	0	2	0	0	0	0	0	2
Ecuador	0	0	0	0	0	0	0	0	0	3	0	0	0	0	0	0	0	0	0	0	0	2	0	0	0	0	0	5
Egypt	0	0	0	0	0	0	0	0	0	0	0	0	0	0	0	0	0	0	0	1	0	1	0	0	0	0	0	2
Estonia	0	0	0	1	0	0	0	0	0	0	0	0	0	0	0	0	0	0	0	1	0	0	0	0	0	0	0	2
Finland	2	0	0	0	0	0	0	0	0	0	0	0	0	0	7	0	0	0	0	22	0	1	0	0	0	0	0	47
France	7	0	0	0	0	0	0	0	4	4	0	0	0	1	75	0	0	9	3	119	9	3	1	0	0	0	0	309
Gambia	0	0	0	0	0	0	0	0	0	0	0	0	0	0	1	0	0	0	0	0	0	0	0	0	0	0	0	1
Georgia	0	0	0	0	0	0	0	0	0	4	0	0	0	0	0	0	0	0	0	0	0	0	0	0	0	0	0	4
Germany	1	7	6	0	0	0	0	0	1	21	1	0	0	0	15	0	0	1	1	229	46	4	0	2	0	1	0	551
Greece	0	0	0	0	0	4	0	0	0	0	0	0	0	0	3	0	0	0	0	6	0	2	0	2	0	0	0	17
Guatemala	0	0	0	0	0	0	0	0	0	0	0	0	0	0	0	0	0	0	0	1	0	0	0	0	0	0	0	1

Country	Mt. Cholatse	Kyazo Ri	Mt. Nirekha	Mt. Langsisa Ri	Mt. Ombigaichen	Mt. Bokta	Mt. Chekigo	Mt. Phari Lapcha	Mt. Lobuje West	Mt. Larkya Peak	Mt. ABI	Mt. Yubra Himal	Hiunchuli	Singu Chuli (Fluted Peak)	Mera Peak	Kusum Kangru	Kwangde	Chulu West	Chulu East	Imja Tse (Island Peak)	Pharchamo	Lobuje	Ramdung	Pisang	Kongma Tse (Mehara Peak)	Ganja-la Chuli (Naya Kanga)	Paldor Peak	Total
la																												
Haiti	0	0	0	0	0	0	0	0	0	0	0	0	0	0	0	0	0	0	0	1	0	0	0	0	0	0	0	1
Hongkong	0	1	0	0	0	0	0	0	0	0	0	0	0	0	0	0	0	0	0	6	0	1	0	0	0	0	0	8
Hungery	0	0	0	0	0	0	0	0	0	0	0	0	0	0	5	0	0	0	0	14	0	2	0	0	0	0	0	21
Iceland	0	0	0	0	0	0	0	0	0	0	0	0	0	0	0	0	0	0	0	7	0	0	0	0	0	0	0	7
India	0	0	0	0	0	0	0	0	4	0	0	0	0	0	39	0	0	0	0	59	0	2	0	0	0	0	0	125
Indonesia	0	0	0	0	0	0	0	0	0	1	0	0	0	0	1	0	0	0	1	6	0	1	0	0	0	5	0	15
Iran	0	0	0	0	0	0	0	0	0	0	0	0	0	0	10	0	0	3	0	42	0	3	0	2	0	0	0	60
Ireland	0	1	2	0	0	0	0	0	0	0	0	0	1	1	14	0	0	0	0	45	0	3	0	0	0	0	0	67
Israel	0	0	0	0	0	0	0	0	0	0	0	0	0	0	9	0	0	0	0	24	0	2	0	0	0	0	0	35
Italy	0	6	0	0	0	0	0	0	8	4	3	0	0	1	89	0	0	1	6	105	19	2	0	4	0	4	0	272
Japan	1	0	0	0	0	0	2	0	0	0	0	0	0	0	40	1	3	1	6	42	6	3	0	4	0	1	0	145
Jordan	0	0	0	0	4	0	0	0	0	0	0	0	0	0	0	0	0	0	0	0	0	1	0	0	0	0	0	5
Kazakhstan	0	0	0	0	0	0	0	0	1	0	0	0	0	0	1	0	0	0	0	6	0	2	0	0	0	0	0	10
Kenya	0	0	0	0	0	0	0	0	0	0	0	0	0	0	4	0	0	0	0	4	0	0	0	0	0	0	0	8
Kuwait	0	0	0	0	0	0	0	0	0	0	0	0	0	0	1	0	0	0	0	1	0	2	0	0	0	1	0	5
Latvia	0	0	1	0	0	0	0	0	0	0	0	0	0	0	0	0	0	0	0	0	0	5	0	0	0	0	0	6

Country	Mt. Cholatse	Kyazo Ri	Mt. Nirekha	Mt. Langsisa Ri	Mt. Ombigaichen	Mt. Bokta	Mt. Chekigo	Mt. Phari Lapcha	Mt. Lobuje West	Mt. Larkya Peak	Mt. ABI	Mt. Yubra Himal	Hiunchuli	Singu Chuli (Fluted Peak)	Mera Peak	Kusum Kangru	Kwangde	Chulu West	Chulu East	Imja Tse (Island Peak)	Pharchamo	Lobuje	Ramdung	Pisang	Kongma Tse (Mehara Peak)	Ganja-la Chuli (Naya Kanga)	Paldor Peak	Total
Lebanon	0	0	0	0	0	0	0	0	0	0	0	0	0	0	0	0	0	0	0	6	0	1	0	0	0	0	0	7
Lithuania	0	0	0	0	0	0	0	0	0	0	0	0	0	0	2	0	0	0	0	1	0	1	0	0	0	1	0	5
Luxembourg	0	0	0	0	0	0	0	0	0	0	0	0	0	0	0	0	0	0	0	3	0	0	0	0	0	0	0	3
Macedonia	0	0	0	0	0	0	0	0	0	0	0	0	0	0	0	0	0	0	0	3	0	2	0	0	0	0	0	5
Malaysia	0	0	0	0	0	0	0	0	1	0	0	0	0	0	5	0	2	2	1	18	0	2	0	0	0	0	0	31
Maldives	0	0	0	0	0	0	0	0	0	0	0	0	0	0	0	0	0	0	0	0	0	2	0	0	0	0	0	2
Malta	0	0	0	0	0	0	0	0	0	0	0	0	0	0	0	0	0	0	0	6	0	0	0	0	0	0	0	6
Mexico	0	0	0	0	0	0	0	0	0	0	0	0	0	0	0	0	0	0	0	14	0	0	0	0	0	0	0	14
Montenegro	0	0	0	0	0	0	0	0	0	0	0	0	0	0	0	0	0	0	0	1	0	0	0	0	0	0	0	1
Morocco	0	0	0	0	0	0	0	0	0	0	0	0	0	0	1	0	0	0	0	0	0	0	0	0	0	0	0	1
Myanmar	0	0	0	0	0	0	0	0	0	0	0	0	0	0	0	0	0	0	0	3	0	3	0	0	0	0	0	6
Nepal	0	0	0	0	0	0	0	0	0	0	0	0	0	0	9	0	0	0	1	19	1	4	1	2	0	0	0	46
Netherlands	1	0	0	0	0	0	0	0	4	0	0	0	0	0	43	0	0	3	1	24	1	6	1	2	0	0	0	95
New Zealand	2	3	0	0	0	0	0	0	0	0	0	0	0	0	11	0	0	0	1	18	0	5	0	0	0	1	0	51
Norway	0	0	0	0	0	0	0	0	0	2	0	0	0	0	4	0	0	0	0	77	2	3	0	0	0	0	0	116
Pakistan	0	0	0	0	0	0	0	0	0	0	0	0	0	0	2	0	0	0	0	0	0	0	0	0	0	0	0	2

Country	Mt. Cholatse	Kyazo Ri	Mt. Nirekha	Mt. Langsisa Ri	Mt. Ombigaichen	Mt. Bokta	Mt. Chekigo	Mt. Phari Lapcha	Mt. Lobuje West	Mt. Larkya Peak	Mt. ABI	Mt. Yubra Himal	Hiunchuli	Singu Chuli (Fluted Peak)	Mera Peak	Kusum Kangru	Kwangde	Chulu West	Chulu East	Imja Tse (Island Peak)	Pharchamo	Lobuje	Ramdung	Pisang	Kongma Tse (Mehara Peak)	Ganja-la Chuli (Naya Kanga)	Paldor Peak	Total	
Peru	0	0	0	0	0	0	0	0	0	0	0	0	0	0	1	0	0	0	0	2	0	0	0	0	0	0	0	3	
Philippines	0	0	0	0	0	0	0	0	0	0	0	0	0	0	1	0	0	0	0	9	0	0	0	0	0	0	0	10	
Poland	0	0	0	0	0	0	0	0	2	0	0	0	0	0	17	0	0	2	7	141	0	1	0	6	0	0	0	186	
Portugal	0	0	0	0	0	0	0	0	1	0	0	0	0	0	3	0	0	0	0	1	0	0	0	0	0	0	0	5	
Romania	0	0	1	0	0	0	0	0	0	0	0	0	0	0	1	0	0	0	0	23	0	0	0	0	0	0	0	25	
Russia	0	0	0	0	0	2	0	0	0	3	0	0	0	1	78	0	0	8	6	87	2	1	6	1	1	0	3	0	208
Serbia	0	0	0	0	0	0	0	0	0	0	0	0	0	0	0	0	0	0	0	6	0	0	0	0	0	0	0	6	
Singapore	0	0	0	0	0	0	0	0	0	2	0	0	0	6	11	0	0	0	0	35	0	9	0	1	0	0	0	64	
Slovakia	0	1	0	0	0	0	0	0	0	0	0	0	0	0	19	0	0	0	2	17	0	3	0	0	0	0	0	42	
Slovenia	0	2	0	0	0	0	0	0	2	0	0	0	0	0	0	0	0	0	8	2	3	0	0	0	0	5	0	22	
South Africa	0	0	0	0	0	0	0	0	0	0	0	0	0	0	9	0	0	0	0	27	1	2	0	0	0	0	0	39	
South Korea	0	3	0	0	0	0	0	0	1	0	0	0	0	7	32	0	0	0	0	75	1	1	9	0	0	0	10	0	148
Spain	0	2	0	0	0	0	8	0	9	15	0	0	0	0	41	0	0	5	3	127	8	3	0	0	2	0	0	250	
Sri Lanka	0	0	0	0	0	0	0	0	0	0	0	0	0	0	0	0	0	0	0	1	0	0	0	0	0	0	0	1	
Sudan	0	0	0	0	0	0	0	0	0	0	0	0	0	0	0	0	0	0	0	0	0	1	0	0	0	0	0	1	
Sweden	0	2	0	0	0	0	0	0	0	0	0	0	0	0	16	0	0	0	0	31	11	6	0	0	0	0	0	66	

Country	Mt. Cholatse	Kyazo Ri	Mt. Nirekha	Mt. Langsisa Ri	Mt. Ombigaichen	Mt. Bokta	Mt. Chekigo	Mt. Phari Lapcha	Mt. Lobuje West	Mt. Larkya Peak	Mt. ABI	Mt. Yubra Himai	Hiunchuli	Singu Chuli (Fluted Peak)	Mera Peak	Kusum Kangru	Kwangde	Chulu West	Chulu East	Imja Tse (Island Peak)	Pharchamo	Lobuje	Ramdung	Pisang	Kongma Tse (Mehara Peak)	Ganja-la Chuli (Naya Kanga)	Paldor Peak	Total
Switzerland	1	3	9	0	0	0	0	0	2	0	0	0	0	0	55	0	0	2	0	93	9	19	2	0	0	0	0	195
Taiwan	0	0	0	0	0	0	0	0	0	0	0	0	0	0	7	0	0	0	0	24	0	1	0	0	0	0	0	32
Tanzania	0	0	0	0	0	0	0	0	0	0	0	0	0	0	1	0	0	0	0	5	0	0	0	0	0	0	0	6
Thailand	0	0	0	0	0	0	0	0	10	0	0	4	0	1	30	0	0	0	0	25	0	0	0	0	0	5	0	75
Tunisia	0	0	0	0	0	0	0	0	0	0	0	0	0	0	0	0	0	0	0	2	0	0	0	0	0	0	0	2
Turkey	0	0	0	0	0	0	0	0	0	0	0	0	0	0	0	0	0	0	0	8	0	1	0	0	0	0	0	9
U.A.E	0	0	0	0	0	0	0	0	0	0	0	0	0	0	0	0	0	0	0	1	0	0	0	0	0	0	0	1
Ukraine	0	0	0	8	0	0	0	0	0	0	0	0	0	0	32	0	0	0	1	41	0	0	0	0	0	1	0	83
United Kingdom	8	22	0	0	1	0	0	0	2	10	0	0	0	1	192	0	0	1	3	271	2	69	0	1	0	6	0	619
United States	4	7	0	4	0	0	0	0	3	1	2	0	0	3	99	0	0	1	6	236	6	104	1	1	0	5	0	494
Venezuela	0	0	0	0	0	0	0	0	0	0	0	0	0	0	0	0	0	0	0	0	0	2	0	0	0	0	0	2
Vietnam	0	0	0	0	0	0	0	0	0	0	0	0	0	0	1	0	0	0	0	2	0	0	0	0	0	0	0	3
Total	38	75	21	13	7	6	10	0	90	94	13	4	1	30	1502	1	5	90	106	2817	153	706	45	43	0	59	0	5929

Source: Nepal Mountaineering Assisociation(NMA)

TABLE 5.12: ROYALTY REVIVED BY PEAK, 2017

S.N	Peak	Group	Pax	Royalty (US\$)
1	Mt. Cholatse	13	38	5,000.00
2	Kyazo Ri	22	75	12,750.00
3	Mt. Nirekha	6	21	3,375.00
4	Mt. Langsisa Ri	3	13	1,625.00
5	Mt. Ombigaichen	1	7	1,750.00
6	Mt. Bokta	2	6	1,000.00
7	Mt. Chekigo	2	10	1,140.00
8	Mt. Phari Lapcha	0	0	-
9	Mt. Lobuje West	26	90	15,320.00
10	Mt. Larkya Peak	26	94	13,545.00
11	Mt. ABI	4	13	1,875.00
12	Mt. Yubra Himal	1	4	500.00
13	Hiunchuli	1	1	125.00
14	Singu Chuli (Fluted Peak)	8	30	10,000.00
15	Mera Peak	347	1502	240,158.00
16	Kusum Kangru	1	1	125.00
17	Kwangde	2	5	890.00
18	Chulu West	33	90	14,210.00
19	Chulu East	46	106	25,712.00
20	Imja Tse (Island Peak)	685	2817	472,897.00
21	Pharchamo	40	153	24,144.00
22	Lobuje	186	706	128,992.00
23	Ramdung	9	45	4,495.00
24	Pisang	23	43	7,375.00
25	Kongma Tse (Mehara Peak)	0	0	-
26	Ganja-la Chuli (Naya Kanga)	20	59	10,820.00
27	Paldor Peak	0	0	-
	Total	1507	5929	997,823.00

Source: Nepal Mountaineering Association (NMA)

PART VI

PILGRIMAGE



Nepal is famous destination for pilgrimage due to its prominent, glorious and prideful historical and sacred places. Lumbini, being birth place of Lord Buddha and Pashupatinath, a centre of faith for Hinduism is major among many important places. Lumbini is found as most visited pilgrimage by foreigners. It was visited by 1,552,586 persons out of them 80.6% were Nepalese while 10% Indians and 9.4 % from other countries. February was the most preferred month for Lumbini visit. Similarly, the 124,180 visitors form third country visited the Pashupatinath .

TABLE 6.1: VISITORS (EXCLUDING INDIANS CITIZEN) TO PASHUPATI AREA BY MONTH, 2011-2017

Month	2011	2012	2013	2014	2015	2016	2017
January	9,225	9,035	10298	8592	9148	5960	6673
February	11,048	10,901	9778	12705	13167	6207	7503
March	13,499	14,753	14369	15066	14652	6463	11067
April	13,300	15,601	19101	17178	15777	8567	14204
May	5,966	10,087	12855	10266	1685	8447	8506
June	4,948	5,944	5973	5590	1786	7413	4319
July	11,264	7,887	5043	8444	3476	5604	4752
August	9,360	9,481	9993	12556	2501	5375	7053
September	17,457	13,686	9131	14758	4998	8047	9835
October	25,565	18,202	21473	28428	3994	13091	22709
November	13,562	14,494	24881	21997	4197	12918	18814
December	8,693	9,814	13963	10593	3299	7319	8745
Total	143,887	139,885	156,858	166173	78680	95411	124180

Source: Pashupati Area Development Trust

**TABLE 6.2: INDIANS CITIZEN VISITORS TO LUMBINI BY MONTH,
2011-2017**

Month	2011	2012	2013	2014	2015	2016	2017
January	2827	8678	3608	6169	6942	2835	18354
February	3478	4263	3213	5900	6215	3580	10577
March	4737	3275	11693	6425	7932	5190	9721
April	3753	63266	73041	70267	77614	24975	13497
May	8386	6099	19144	10092	8595	24233	16677
June	4889	4222	5886	6998	3506	12380	10693
July	2691	1713	2186	3393	2873	5127	7055
August	2683	2607	3039	4093	1472	4313	3913
September	3467	3297	3066	5300	701	5360	6641
October	5949	5512	6141	8334	1763	9076	15985
November	12778	9022	9024	16142	8109	28280	23233
December	8071	8629	10211	11103	4468	8920	19098
Total	63709	120583	150252	154216	130262	134269	155444

Source: Lumbini Development Trust

**TABLE 6.3: COUNTRY-WISE VISIT TO BIRTH PLACE OF LORD BUDDHA,
LUMBINI (except Indian citizens) BY MONTH, 2017**

Country	Jan.	Feb.	Mar.	April	May	June	July	Aug.	Sept.	Oct.	Nov.	Dec.	Total
Argentina	10	9	25	7	4	4				6	2		67
Armenia						2							2
Austria		3	5					1					9
Australia	229	206	154	101	59	38	61	48	138	183	185	223	1625
Algeria			2										2
Azerbaijan	2		1										3
Bangladesh	29	1	2		2	3		9		6		1	53
Belarush	4			1									5
Belgium	30	11	34	37	8		17	14	20	42	55	8	276
Bhutan	451	243	1351	19		1	18		6	7	13	169	2278
Bolivia				1		3							4
Brazil	35	2	4	5	12	14	2	2	1	7	5	2	91
Brunei										6			6
Canada	15	45	73	36	34	7	33	9	21	112	82	37	504
Cheq. Rep.	1		5	6	8	1		2		52	24	1	100
Chile	4	3	5	19	3	8		1		8	1		52
China	1823	2275	2031	883	1484	470	757	800	572	1402	1610	1663	15770
Colombia		1	4		2	3	2		2		3		17
Combodia	16	206	219	11	1	1	1			119	721		1295
Cosovo	1												1
Costarica	1		4						5	2			12
Crotia	22									1	1		24
Denmark	11	7	26	2		1	6			24	24	3	104

Country	Jan.	Feb.	Mar.	April	May	June	July	Aug.	Sept.	Oct.	Nov.	Dec.	Total
Ecuador		3											3
Egypt			1										1
El Salvador						3							3
Ethiopia			23									2	25
Finland	4	6		2	4	2							18
France	78	117	176	145	77	31		57	27	209	329	95	1341
Georgia							1						1
Germany	54	66	254	182	84	22	37	52	160	279	354	92	1636
Greece	1		1	1			3		1			1	8
Gautemala		3											3
Honduras			2										2
Hong Kong	7	28	26	2	6	2	13	9	32	3	11	21	160
Hungary		21	28	4		3		2		3			61
Iceland	1												1
Indonesia	20	12	26	9	5	35	4	12	1	119	41	151	435
Iran	1	2	1			1					4		9
Iraq												1	1
Israel		2	6	1					6	13	8	1	37
Italy	33	47	27	49		11	14	37	23	48	93	26	408
Japan	154	227	240	48	9	40	21	76	115	141	138	204	1413
Kazakistan	2				60		2			1			65
Labnan												1	1
Latvia	1		4					2			2		9
Lithuania		2					1				1		4

Country	Jan.	Feb.	Mar.	April	May	June	July	Aug.	Sept.	Oct.	Nov.	Dec.	Total
Luxumberg					1						1		
Malaysia	1	70	94	28		80	48	60	32	68	417	373	1271
Malta			1		36						6		43
Mexico	29	30	3	4			5		1	2	5	2	81
Mongolia	239	4		7	1						2	4	257
Myanmar	1678	3698	5178	2355		26	22	1	103	2051	3446	2973	21531
Namibia				10	45						12		67
Netherlands	92	85	145	111		4		141	66	205	154	46	1049
Newzeland	19		99	5	30	1			10	2		14	180
Nigeria					1								1
Norway	5	1	7		5					6	12	1	37
Oman					2	2							4
Pakistan			6		1	2				3			12
Palestine						1							1
Peru	1									2	2		5
Philipins			3		2	2		4		11	4	1	27
Poland	28	5	10	8	2	1	13		8	17	68	91	251
Portugal	1		4	2	1	2		28			9		47
Romania		1	21	17		9		1		1		1	51
Russia	68	23	71	8		5	2	26	6	2	66	35	312
S. Africa	7			17	36		7	1	1	4		2	75
S. Korea	1409	803	656	42		64	50	132	168	180	619	980	5103
Saudi A.	2				70		2						74

Country	Jan.	Feb.	Mar.	April	May	June	July	Aug.	Sept.	Oct.	Nov.	Dec.	Total
Sierraleone						1							1
Singapore	40	107	57	24			11	21	36	38	141	232	707
Slovakia				17	19		1			28			65
Slovenia	38		26	5							16		85
Spain	38	48	26	31		5	66	110	65	61	49	33	532
Sri Lanka	155	6906	11500	924	14	46	931	10973	6270	6552	3793	464	48528
Sudan					122					1	4	1	128
Surinam				1	3								4
Sweden	4	3	10							13	15	3	48
Switzerland	8	13	26	34		2	5	3		39	30	24	184
Syria					13								13
Taiwan	76	151	28	26	2	12		16	27	212	586	480	1616
Tanzania					14						2		
Thailand	1596	6557	4658	523		294	57	130	127	3278	4536	5847	27603
Turkey	3	2	3	4	140	1	3	2	2	3			163
U.K.	84	197	209	186	2	24		153	122	267	273	160	1677
Ukrain			3	2	85		2				2	27	121
U.S.A.	93	131	102	61		50	68	75	81	106	26	70	863
Vietman	92	735	805	69	130	52	171	22	446	651	1038	823	5034
Total	8846	23118	28511	6092	6	1392	2457	13032	8701	16596	19041	15389	145796

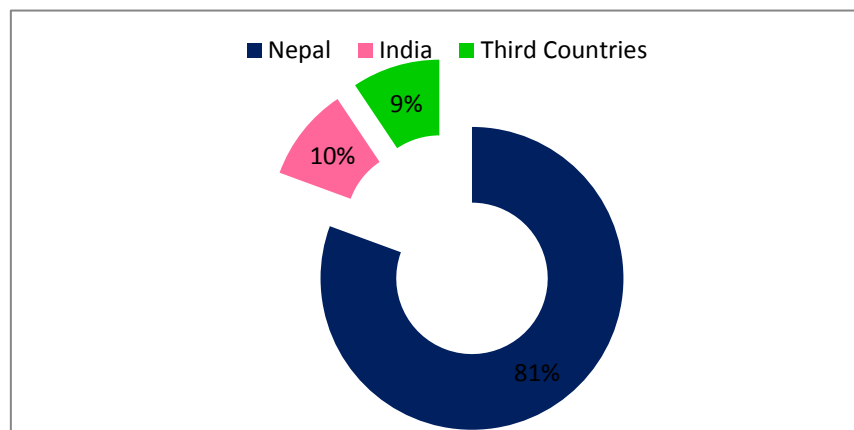
Source: Lumbini Development Trust.

TABLE 6.4: SUMMARY OF VISITORS BY BROAD ORIGIN IN LUMBINI BY MONTH, 2017

S.N.	Country	Jan.	Feb.	Mar.	April	May	June	July	Aug.	Sept	Oct.	Nov.	Dec.	Total
1	Nepal	181780	130930	68412	313948	98963	40021	26032	17017	16579	96269	137757	123638	1251346
2	India	18354	10577	9721	13497	16677	10693	7055	3913	6641	15985	23233	19098	155444
3	Third Countries	8846	23118	28511	6092	6	1392	2457	13032	8701	16596	19041	15389	145796
	Total	208980	164625	106644	333537	115646	52106	35544	33962	31921	128850	180031	158125	1552586

Source: Lumbini Development Trust.

CHART 6.1 VISITORS DISTRIBUTION OF LUMBINI BY BROAD COUNTRY ORIGIN, 2017



PART VII

INCOME GENERATION



Revenue from tourism sector is observed from foreign currency exchange made by tourists and tourism industries as proxy of income. All domestic contribution is not captured.

Nepal Rastra Bank report shows total foreign currency exchange (less return) for 2016/017 stood at Nrs. 58,526,918 thousand, (Arround 551,000 thousand US\$). This is almost 40% higher than previous year 2015/016. This increase in currency income due to increase in tourist arrival brings per tourist per day expenditure at 54 USD.

TABLE 7.1: GROSS FOREIGN EXCHANGE EARNINGS FROM TOURISM BY FISCAL YEAR, 2057/58 TO 2073/74

Fiscal Year	Total Earnings (Net received)			%Change in US\$
	NRs. (000)	Annual Average	US\$ (000)	
		Exchange Rate		
2057/58 (2000/01)	11,969,174		162,513	-4.3
2058/59 (2001/02)	7,798,535	-	101,628	-37.5
2059/60 (2002/03)	10,369,409	-	134,245	32.1
2060/61 (2003/04)	12,337,977	-	168,163	25.3
2061/62 (2004/05)	11,814,853	71.76	164,644	-2.1
2062/63 (2005/06)	11,710,893	72.03	162,086	-1.6
2063/64 (2006/07)	12,645,761	70.19	180,165	11.2
2064/65 (2007/08)	20,339,890	64.72	314,275	74.4
2065/66 (2008/09)	27,959,800	76.58	365,106	16.2
2066/67 (2009/10)	28,138,600	74.24	379,022	3.8
2067/68 (2010/11)	24,610,800	72.07	341,485	-9.9
2068/69 (2011/12)	30,703,820	80.72	380,374	11.4
2069/70 (2012/13)	34,210,576	87.66	390,264	2.6
2070/71 (2013/14)	46,374,900	98.3	471,769	21.4
2071/72 (2014/15)	53,428,800	98.2	544,100	15.2
2072/73 (2015/16)	41,765,400	102.36	392,700	-27.8
2073/74 (2016/17)	58,526,918	106.21	551,000	40.03
2074/75 (2017/18)*	33,753,048	102.96	327,800	

Source: Nepal Rastra Bank. * 1st six month of FY 2074/75

CHART 7.1: GROSS FOREIGN EXCHANGE EARNINGS FROM TOURISM

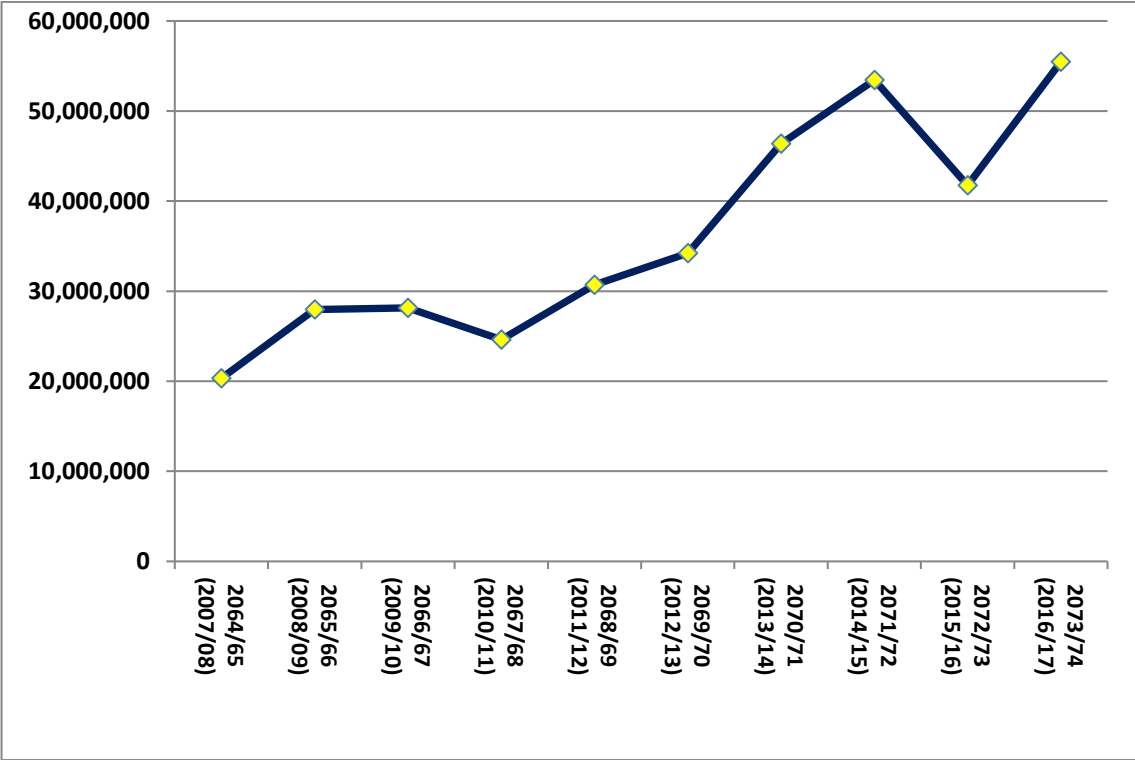


TABLE 7.2: GROSS FOREIGN EXCHANGE EARNINGS, 2000-2017

Year	Total Earning			% Change in US\$	Average Expenditure Per Visitor US\$	Average Expenditure Per Visitor Per Day US\$
	in Rs Million	Annual Average Exchange Rate	US \$ (Million)			
2000/01	11,717.0		158.7		472.4	39.6
2001/02	8,654.3		109.7	-30.9	512.0	64.8
2002/03	11,747.7		151.0	37.6	765.9	79.1
2003/04	18,147.4		245.9	62.9	609.8	45.1
2004/05	10,463.8		145.2	-41.0	532.0	58.5
2005/06	9,555.8		132.1	-9.0	561.0	55
2006/07	10,125.3		143.6	8.7	535.0	45
2007/08	18,653.1		286.9	99.7	860.3	73
2008/09	27,959.8	77.14	363.7	26.8	798.9	70.6
2009/10	28,138.6	72.88	377.5	3.8	578.6	45.7
2010/11	24,610.7	74.33	340.4	-9.8	522.9	39.9
2011/12	30,703.8	81.02	379.0	11.3	440.8	36.2
2012/13	34,210.6	87.96	388.9	2.6	538.0	42.8
2013/14	46,374.9	98.21	472.2	21.4	597.6	48.0
2014/15	53,428.8	99.49	544.1	15.2	790.0	63
2015/16	41,765.4	106.35	392.7	-27.8	902.4	68.57
2016/17	58,526.9	107.58	510.0	40.3	695.0	53.0
2017/18*	33,753.0	102.96	327.8		680.4	54.0

Source: Nepal Rastra Bank 1st six months of FY 2017/018

TABLE 7.3: FOREIGN EXCHANGE EARNINGS FROM TOURISM, 2000/01-2016/17

Year	Total Foreign Exchange Earning from Tourism (Rs. in millions)	As % of Total Value of Merchandise Exports	As % of Total Value of Exports of Goods & Non Factor Services	As % of Total Foreign Exchange Earnings	As % of GDP
2000/01*	11,717.0	16.8	11.8	5.8	2.7
2001/02	8,654.3	14.9	10.6	4.8	1.9
2002/03	11,747.7	23.1	15.2	6.1	2.4
2003/04	18,147.4	32.9	20.3	8.2	3.4
2004/05	10,464.0	17.5	12.2	4.7	1.8
2005/06	9,556.0	15.5	10.9	3.6	1.5
2006/07	10,125.0	16.5	10.8	3.8	1.4
2007/08	18,653.0	30.1	17.9	5.6	2.3
2008/09	27,960.0	40.0	22.8	6.5	2.8
2009/10	28,139.0	44.5	24.6	6.0	2.4
2010/11	24,611.0	35.8	20.2	4.9	1.8
2011/12	30,703.8	37.7	20.0	4.5	1.8
2012/13	34,210.6	39.8	18.9	4.5	2.0
2013/14	46,374.9	45.9	20.5	4.7	2.4
2014/15	53,428.8	54.4	21.6	4.9	2.5
2015/16	41,765.4	55.8	19.6	3.7	1.9
2016/17	58,526.9	71.3	24.3	4.5	2.3
2017/18*	33,753.0	73.1	26.4	5.0	

Source: Nepal Rastra Bank *1st six months of FY 2074/75

**TABLE 7.4: SOME ECONOMIC INDICATORS OF HOTEL AND RESTAURANT (NSIC CATEGORY)
BY FY 2067/68 to 2074/75P**

Economic Indicators	2067/68 2010/11	2068/69 2011/12	2069/70 2012/13	2070/71 2013/14	2071/72 2014/14	2072/73 2015/16	2073/74 2016/17	2074/75P 2017/18
Annual Growth Rate at constant price, 2058/59 (in percentage)	6.20	7.38	5.50	6.77	3.33	-9.68	7.33	9.77
Gross Output at current price (Rs in millions)	68376	82634	95080	108943	120407	129634	146190	175236
Intermediate Consumption at current price (Rs in millions)	47319	57327	65194	73634	79928	88175	98462	119557
Gross Value Added at current price, 2058/59 (Rs in millions)	21057	25307	29886	35309	40479	41459	47728	55679
Gross Value Added at constant price (Rs in millions)	10244	11000	11605	12391	12804	11564	12415	13624
Proportion of Gross Domestic Product at current price (%)	1.63	1.76	1.89	1.94	2.05	2.00	1.98	2.05
Gross Domestic Product Deflator	205.55	230.05	257.53	284.96	316.16	358.52	384.53	408.68

P: Preliminary

Source: GoN, Central Bureau of Statistics

PART VIII

FLIGHT AND PASSENGER MOVEMENT



Out of 56 airports in Nepal 32 airports are in operations. Twenty nine airports run in all seasons. Seven airports are under construction and 18 are as non-function.

Thirty international airlines carried 3887845 passengers out of which 2083150 were outbound and 1804695 in-bound by 27118 flights. The number of countries having civil aviation contract reached to 38. There are 20 airlines for domestic movement.

TABLE 8.1: NUMBER OF INTERNATIONAL FLIGHT AND PASSENGER MOVEMENT BY MONTH, 2017

MONTH	FLIGHT MOVEMENT			PASSENGER MOVEMENT			TRANSIT
	DEP	ARR	TOTAL	OUT	IN	TOTAL	
JAN	1333	1334	2667	160000	158838	318838	
FEB	1274	1275	2549	146417	119726	266143	
MAR	1464	1468	2932	190839	163023	353862	
APR	1404	1403	2807	191296	164966	356262	2
MAY	1442	1443	2885	184678	130645	315323	
JUN	1313	1316	2629	151331	111440	262771	
JUL	1227	1228	2455	155019	117547	272566	
AUG	1242	1238	2480	158586	130652	289238	158
SEP	1422	1423	2845	145766	182425	328191	65
OCT	1583	1580	3163	190547	191214	381761	79
NOV	1507	1506	3013	218058	166797	384855	28
DEC	1469	1468	2937	190613	167422	358035	101
TOTAL	16680	16682	33362	2083150	1804695	3887845	433

Source: ATSRO (ATS/SAR Division), Terminal Management Division, Air Cargo Service Division T.I.A.C.A.O.

**TABLE 8.2: NUMBER OF INTERNATIONAL FLIGHT & PASSENGER MOVEMENT,
2011-2017**

MONTH	FLIGHT MOVEMENT			PAX MOVEMENT			TRANSIT
	DEP	ARR	TOTAL	OUT	IN	TOTAL	
2011	11394	11398	22792	1292515	1407512	2700027	
2012	11659	11661	23320	1546350	1378825	2925175	342
2013	11807	11812	23619	1647235	1493067	3140302	223
2014	13605	13603	27208	1889448	1622199	3511647	284
2015	13281	13283	26564	1674664	1542498	3217162	329
2016	13560	13558	27118	1823598	1687144	3510742	122
2017	16680	16682	33362	2083150	1804695	3887845	433

Source: - Civil Aviation Authority of Nepal

**TABLE 8.3: INTERNATIONAL AIRLINES WISE FLIGHT AND PASSENGER
MOVEMENT, 2017**

S.N	AIRLINES	FLIGHT MOVEMENT			PASSENGER MOVEMENT		
		DEP	ARR	TOTAL	OUT	IN	TOTAL
1	ABY	1123	1122	2245	145528	142089	287617
2	AIC	915	915	1830	105603	102764	208367
3	BBC	316	316	632	36084	26863	62947
4	BHA	26	27	53	1180	826	2006
5	BTN	225	225	450	6718	4060	10778
6	CCA	577	577	1154	46395	42157	88552
7	CES	545	545	1090	46493	46297	92790
8	CSC	193	193	386	9718	10478	20196
9	CSN	729	729	1458	67385	58645	126030
10	DRK	415	415	830	22468	9342	31810
11	ETD	667	667	1334	67489	63458	130947
12	FDB	1158	1158	2316	166723	126360	293083

S.N	AIRLINES	FLIGHT MOVEMENT			PASSENGER MOVEMENT		
		DEP	ARR	TOTAL	OUT	IN	TOTAL
13	H DA	226	226	452	55978	44536	100514
14	HIM	921	919	1840	117111	62782	179893
15	IGO	366	366	732	57409	54544	111953
16	JAI	1823	1822	3645	268027	201274	469301
17	KAL	165	165	330	34883	31411	66294
18	MAS	365	365	730	49012	31773	80785
19	MXD	654	654	1308	77215	85405	162620
20	NAC	1542	1540	3082	203894	184435	388329
21	OMA	777	777	1554	87596	89662	177258
22	QTR	1218	1218	2436	149092	158831	307923
23	REG	172	172	344	16542	15171	31713
24	SLK	255	255	510	35033	27868	62901
25	TBA	131	131	262	6595	5895	12490
26	THA	365	365	730	91634	78731	170365
27	THY	224	224	448	51938	32831	84769
28	UBG	165	165	330	10799	9583	20382
29	WAN	13	13	26	1577	292	1869
30	XAX	209	209	418	42752	55239	97991
31	OTHERS	201	207	408	4269	1087	5356
TOTAL		16681	16682	33363	2083140	1804689	3887829

Source: - Civil Aviation Authority of Nepal

**TABLE 8.4: NUMBER OF DOMESTIC FLIGHT & PASSENGER MOVEMENT,
2011-2017**

MONTH	FLIGHT MOVEMENT			PASSENGER MOVEMENT		
	DEP	ARR	TOTAL	IN	OUT	TOTAL
2011	39635	39625	79260	796992	796992	1593984
2012	35444	35433	70877	786694	788365	1575059
2013	34544	34532	69076	769100	773504	1542604
2014	34270	34266	68536	728857	721701	1450558
2015	32944	32921	65865	683130	680918	1364048
2016	36938	36938	73876	880895	876701	1757596
2017	46563	46534	93097	1250102	1138481	2388583

**TABLE 8.5: NUMBER OF DOMESTIC FLIGHT & PASSENGER MOVEMENT
BY MONTH, 2017**

MONTH	FLIGHT MOVEMENT			PASSENGERS		
	DEP	ARR	TOTAL	OUT	IN	TOTAL
JAN	2936	2937	5873	74793	73893	148686
FEB	2886	2886	5772	78636	75219	153855
MAR	3851	3848	7699	99556	93713	193269
APR	4789	4786	9575	112459	108169	220628
MAY	4175	4164	8339	96877	101008	197885
JUN	3259	3258	6517	91651	89650	181301
JUL	3059	3060	6119	93943	93463	187406
AUG	3156	3157	6313	96659	93593	190252
SEP	4149	4161	8310	125145	107710	232855
OCT	5678	5672	11350	145669	141158	286827
NOV	5066	5049	10115	131349	122597	253946
DEC	3559	3556	7115	103365	38308	141673
TOTAL	46563	46534	93097	1250102	1138481	2388583

Source :- Civil Aviation Authority of Nepal

**TABLE 8.6: NUMBER OF DOMESTIC FLIGHT & PASSENGER MOVEMENT
BY DOMESTIC AIRLINES, 2017**

S.N	AIRLINE	FLIGHT MOVEMENT			PAX		
		DEP	ARR	TOTAL	OUT	IN	TOTAL
1	Altitude Air	756	758	1514	2381	2704	5085
2	Air Dynasty	1530	1527	3057	3022	3709	6731
3	Air Kasthamandap	0	0	0	0	0	0
4	Buddha Air	14836	14836	29672	648441	620380	1268821
5	Fishtail Air	1091	1091	2182	2561	2791	5352
6	HA	35	36	71	120	210	330
7	Goma Air	851	847	1698	11965	10950	22915
8	Heli Everest	927	926	1853	2788	3461	6249
9	Makalu Air	795	795	1590	2225	2675	4900
10	Mountain Helicopter	535	535	1070	1447	1895	3342
11	Muktinath Airlines	128	128	256	144	390	534
12	Nepal Airlines	2334	2333	4667	51984	43116	95100
13	Nepali Sanik Biman Sewa (Mid Air Base)	1017	1015	2032	0	0	0
14	Simrik Airlines	2372	2371	4743	32145	33177	65322
15	Saurya Airlines	1986	1986	3972	92320	89694	182014
16	Shree Airlines,	438	440	878	1525	1574	3099
17	SHA	1182	1183	2365	58300	57300	115600
18	Simrik Air	889	888	1777	2500	2220	4720
19	SMA	743	743	1486	9837	9746	19583
20	Sita Air	1002	1002	2004	10140	11500	21640
21	Tara Air	3054	3052	6106	32784	32517	65301
22	Yeti Airlines	10056	10056	20112	283228	271517	554745
23	OTHERS	1	1	2	0	0	0
TOTAL		46558	46549	93107	1249857	1201526	2451383

Source : - ATSRO (ATS/SAR Division), Domestic T.D.O., Revenue Section (Domestic), T.I.A.C.A.O.

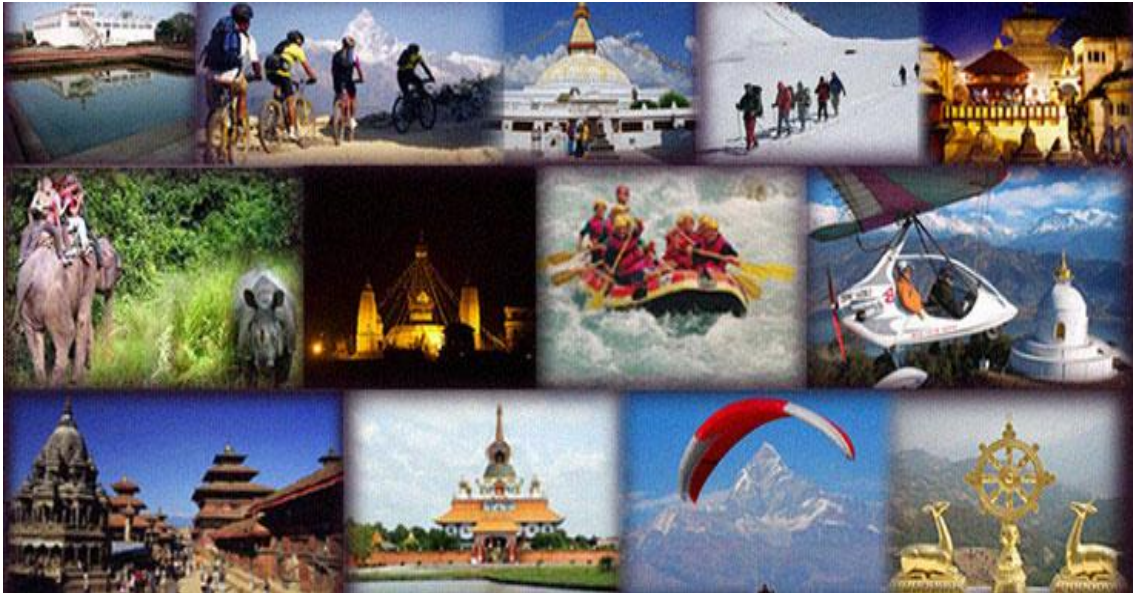
TABLE 8.7: NUMBER OF PARAGLIDING IN POKHARA BY MONTHS, 2015-2017

Month	2015			2016			2017		
	Nepali	Foreigner	Total	Nepali	Foreigner	Total	Nepali	Foreigner	Total
January	366	935	1301	530	870	1400	630	860	1490
February	465	822	1287	1040	1040	1370	432	1050	1482
March	411	911	1322	1020	1020	1420	405	1020	1425
April	468	913	1581	1040	1040	1360	310	1045	1355
May	224	90	314	1146	1146	1581	485	1155	1640
June	103	36	139	1350	1350	1555	205	1330	1535
July	135	38	173	980	980	1230	260	1020	1280
August	187	152	239	1360	1360	1720	380	1330	1710
September	236	210	446	1509	1509	1874	355	1517	1872
October	243	495	1238	1640	1640	2120	510	1647	2157
November	307	534	841	1340	1340	1940	605	1380	1985
December	162	556	718	1130	1130	1430	310	1030	1340
Total	3307	5692	8999	4675	14666	19341	4887	14384	19271

Source: Nepal Air Sports Association, Pokhara

PART IX

TOURISM INDUSTRY



Tourism sector of Nepal is managed with partnership of Government, private sector, households, professionals and NGOs. Tourism industries play pivotal roles in tourist service, service management, increasing revenue.

All total 1101 (star and tourist standard hotels) are operated in 2017, with bed capacity 39833 per day. Travel agency, tour guide, tour operators, rafting agencies, trekking agencies and guides all are in increasing number of trend. In 2017 the number of registered Travel agencies reached up to 3824 and Trekking agencies are 2637.

TABLE 9.1: TOURIST STANDARD HOTEL REGISTERED IN NEPAL

Year	Star Hotel		Tourist Standard Hotel		Total	
	Hotel	Bed	Hotel	Bed	Hotel	Bed
2061	110	10715	886	28392	996	39107
2062	110	10715	896	28669	1006	39384
2063	105	9763	502	14497	607	24260
2064	105	9763	512	14897	617	24660
2065	96	9320	573	16743	669	26063
2066	97	9369	647	19124	744	28493
2067	103	9125	686	20517	789	29342
2068	106	9323	721	21457	827	30780
2069	107	9371	746	22286	853	31657
2070	117	9506	909	25017	1026	34523
2071	118	9554	957	26625	1075	36179
2072	116	9710	957	27240	1073	36950
2073	120	10071	985	28171	1062	38242
2074	125	10697	977	29136	1101	39833

Source: Department of Tourism

TABLE 9.2: TOURIST INDUSTRIES AND GUIDE IN NEPAL

Year	Travel Agency	Trekking Agency	Rafting Agency	Tourist Transportation Service	Tour Guide	Trekking Guide	River Guide
2069/70	2239	1598	52	31	0	0	100
2070/71	2450	1761	60	50	3141	9741	131
2071/72	2611	1903	61	59	3335	10436	131
2072/73	2768	2017	66	67	3507	11358	187
2073/74	3444	2367	72	72	3717	13049	207
2074/75	3824	2637	73	72	3876	13831	230

Source: Department of Tourism

TABLE 9.3: REGISTERED HOME STAY, 2015-2017

District	Type	2015			2016			2017		
		No. of Affiliated House	No. of Room	No. of Bed	No. of Affiliated House	No. of Room	No. of Bed	No. of Affiliated House	No. of Room	No. of Bed
Kathmandu	Community	52	80	148	63	99	214	63	99	214
	Private	34	114	198	42	126	176	49	150	206
	Total	86	194	346	105	225	390	112	249	420
Kavre	Community	43	17	32	49	83	107	49	83	107
	Private	2	5	10	2	5	10	5	16	30
	Total	45	22	42	51	88	117	54	99	137
Lalitpur	Community	7	13	25	12	24	47	12	24	47
	Private	4	10	20	6	15	30	6	15	30
	Total	11	23	45	18	39	77	18	39	77
Mugu	Community	5	5	10	5	5	10	5	5	10
	Private	0	0	0	0	0	0	0	0	0
	Total	5	5	10	5	5	10	5	5	10
Nuwakot	Community	25	33	66	25	33	66	25	33	66
	Private	0	0	0	0	0	0	0	0	0
	Total	25	33	66	25	33	66	25	33	66
Ramechhap	Community	6	15	30	29	54	96	29	54	96
	Private	1	3	6	1	3	6	2	11	20

District	Type	2015			2016			2017		
		No. of Affiliated House	No. of Room	No. of Bed	No. of Affiliated House	No. of Room	No. of Bed	No. of Affiliated House	No. of Room	No. of Bed
	Total	7	15	36	30	57	102	31	65	116
Chitwan	Community	7	14	28	7	14	28	7	14	28
	Private	2	4	6	2	4	6	2	4	6
	Total	9	18	34	9	18	34	9	18	34
Makwanpur	Community	7	16	30	7	16	30	7	16	30
	Private	0	0	0	0	0	0	0	0	0
	Total	7	16	30	7	16	30	7	16	30
Dhading	Community	5	9	18	5	9	18	5	9	18
	Private	0	0	0	0	0	0	1	4	6
	Total	5	9	18	5	9	18	6	13	24
Pyuthan	Community	17	32	64	16	17	34	16	17	34
	Private	0	0	0	0	0	0	0	0	0
	Total	17	32	64	16	17	34	16	17	34
Total	Community	174	234	451	218	354	650	218	354	650
	Private	43	136	240	53	153	228	65	200	298
Total		217	370	691	271	507	878	283	554	948

Source: Department of Tourism

TABLE 9.4: MAJOR CIVIL AVIATION INDICATORS, NEPAL

Main Indicator	2015	2016	2017
Number of Nepalese Airlines operating international flight	2	3	3
Number of International Airlines operating	26	26	30
Number of countries Bilateral agreement for Airlines service	38	38	38
Number of total airlines seats*	8000000	8000000	8000000
Number of Domestic airline Companies operation (both roter & fixed wings)	17	19	20
Number of International Airport	1	1	1
Number of Fixed Wings Operation		10	10
Number of Helicopters operation	7	9	10
Number of Aviation Recreation companies	77	75	74
Number of Airport operation in all seasons	22	26	29
Number of Airport operation	32	32	32

Source: Civil Aviation Authority Nepal

*The number of seats is calculated based on B757 (200 seats). Thus no. of seats varies according to size of aircrafts. Air service agreements are done based on weekly frequencies which can utilized by any type of aircrafts.

PART X

TOURISM EDUCATION



National Academy of Tourism and Hotel Management (NATHM) is a public institution that develops human resource in tourism sector. In the FY 2073/74 total 167 students had completed Bachelor of Hotel Management (BHM) and 125 Bachelor of Travel and Tourism Management (BTTM). Similarly, different tourism related Mid-level and supervisor level trainings received by 1417 persons. Much other private institution provides tourism related academic courses and other professional training, which is not included in this report.

**TABLE 10.1: TOURISM AND HOTEL MANAGEMENT RELATED EDUCATION AND TRAININGS COMPLETED,
2008 -2017**

SN	Course/Training	2008	2009	2010	2011	2012	2013	2014	2015	2016	2017
1	Master's in Hospitality Management	0	0	40	28	25	36	39	0	40	0
2	Bachelor's in Hotel Management	80	80	80	120	121	125	168	168	168	167
3	Bachelor's in travel and tourism	79	80	81	80	80	84	125	126	126	125
4	Food preparation and control	144	101	67	37	72	146	83	0	72	81
5	Beverage Service	60	21	24	10	15	33	17	0	9	0
6	House keeping	21	17	21	0	0	0	0	0	84	0
7	Front Office	24	18	27	0	0	0	0	0	0	0
8	Tourist route guide	136	205	181	0	163	312	227	0	0	0
9	Local guide by region	0	68	113	35	21	18	11	14	41	115
10	Trekking route guide	512	673	953	698	968	1551	1772	38	375	672
11	Rafting route guide	68	77	72	0	34	44	66	47	85	51
12	In service training/seminar/public relations and hospitality	281	252	286	315	246	302	105	77	100	60
13	Outreach training	144	249	129	0	87	67	133	175	0	261
14	Homestay management	0	108	142	377	0	66	108	0	171	0
25	Agri-tourism	26	58	0	0	0	0	0	0	0	0
26	Hospitality and food safety standards	26	0	0	0	0	0	418	27	0	0
27	Porter guide	0	0	0	0	0	0	0	47	0	187
	Total	1601	2007	2216	1700	1832	2784	3272	719	1271	1719

Source: NATHAM

PART XI

MISCELLANEOUS



**TABLE 11.1: TOURIST RELATED ACCIDENT/INCIDENT REPORTED BY MONTH,
2073/74**

INCIDENT	Shrawan	Bhadra	Ashoj	Kartik	Mangsir	Paush	Margh	Falgun	Chaitra	Baisakh	Jestha	Ashad	Total
Lost/Missing	32	31	34	44	47	39	27	32	43	42	44	23	438
Stolen/theft	15	14	10	23	32	28	6	11	17	26	10	9	201
Fraud/Cheating	0	2	2	2	3	1	0	2	4	2	3	0	21
Robbery	0	1	0	0	2	0	0	0	3	0	1	0	7
Pickpocket	0	0	0	0	0	1	1	0	1	2	1	0	6
Harrastment/dispute	1	1	0	1	0	2	0	0	0	1	0	0	6
Accident	0	0	0	0	0	0	0	0	0	0	0	0	0
Damage	0	0	0	0	0	0	0	0	0	0	0	0	0
Attack/ Assault	0	1	1	1	0	0	0	0	0	0	0	0	3
Snatched	0	0	0	0	1	0	0	0	1	0	0	0	2
Threaten	0	0	0	0	0	0	0	1	0	0	0	0	1
Missing Person	0	0	0	0	1	0	0	0	0	0	0	0	1
Rape	0	1	0	0	0	0	0	0	0	0	0	0	1
MISBEHAVIOR	0	0	0	0	0	0	0	0	0	0	0	0	0
kidnap	0	0	0	0	0	0	0	0	0	0	0	0	0
Total	48	51	47	71	86	71	34	46	69	73	59	32	687

SOURCE: DEPARTMENT OF TOURISM, TOURIST POLICE

**TABLE: 11.2 TOURIST RELATED ACCIDENT/INCIDENT REPORTED BY NATIONALITY,
2073/74**

Nationality	Shrawan	Bhadra	Ashoj	Kartik	Mangsir	Paush	Margh	Falgun	Chaitra	Baisakh	Jestha	Ashad	Total
AMERICAN	2	6	3	6	4	3	3	2	8	7	9	4	57
AUSTRIA	0	1	0	0	0	0	0	0	1	0	2	0	4
ARGENTINA	0	1	0	0	0	0	1	0	0	1	0	0	3
AUSTRALIAN	6	0	6	7	10	11	7	3	4	10	2	2	68
BARBADOS	0	0	0	0	0	0	0	0	1	0	0	0	1
BANGLADESHI	1	0	0	0	1	0	1	1	3	2	1	0	10
BELGIUM	0	0	1	1	0	1	0	0	0	2	0	0	5
BHUTAN	0	0	0	1	0	3	0	2	0	0	0	0	6
BULGARIAN	0	0	0	0	0	0	0	0	0	0	0	0	0
BRAZILIAN	0	0	0	0	1	0	0	0	0	0	0	0	1
BRITISH	3	4	3	5	7	5	3	2	5	7	9	3	56
CANADIAN	1	2	2	0	0	0	0	1	2	1	1	0	10
CHINESE	12	9	7	6	9	6	11	7	3	8	4	8	90
CHILI	0	0	0	0	1	0	0	0	0	0	0	0	1
Colombia	0	1	0	0		0	0	0	0	0	0	0	1
CROATIAN	0	0	0	1	0	0	0	0	0	0	0	0	1
CZECH REPUBLIC	0	0	0	0	0	0	0	0	0	0	0	0	0
DENISH	0	2	0	2	3	0	1	0	0	4	0	0	12
DUTCH/Netherland	6	3	3	12	4	4	0	3	4	5	7	2	53
ESTONIA	0	0	1	1	0	0	0	0	0	0	0		2
FRENCH	3	4	3	5	4	5	0	3	3	2	7	3	42
FINNISH	0	0	1	0	0	0	0	0	0	1	0	0	2
GERMAN	1	2	0	4	5	2	3	2	4	1	2	0	26
GUINEA	0	0	0	0	0	0	0	0	0	0	0	0	0
HUNGARIAN	0	0	0	0	0	0	0	0	0	0	0	0	0
INDIAN	3	2	3	1	4	14	1	2	10	0	3	4	47
INDONESIYAN	0	0	0	0	0	0	0	0	0	0	0	0	0
IRELAND	0	1	0	0	4	1	0	0	1	2	0	0	9
IRANIAN	0	0	1	0	0	0	0	0	1	4	0	0	6
ISREALI	0	0	0	2	3	1	0	3	3	0	1	0	13
ITALIAN	1	0	0	1	1	1	0	1	3	0	1	0	9

Nationality	Shrawan	Bhadra	Ashoj	Kartik	Mangsir	Paush	Margh	Falgun	Chaitra	Baisakh	Jestha	Ashad	Total
IVORY COAST		0	0	0	0	0	0		0	0	0	0	0
JAPANESE	3	2	4	4	3	4	1	3	3	5	3	0	35
JORDEN	0	0	0	0	0	1	0	0	0		0	0	1
KOREAN	0	3	3	0	2	2	1	3	3	5	0	0	22
KAZAKISTAN	0	0	0	0	0	0	0	0	1	1	0	0	2
LEBNAN	0	0	0	0	0	1	0	0	0	0	1	0	2
HONKONG	0	0	0	0	0	1	0	0	0	0	0	0	1
MALAYSIAN	0	1	0	2	0	0	0	1	0	0	1	0	5
MaLI	0	0	0	0	0	0	0	0	0	0	0	0	0
MEXICO	0	0	0	1	0	1	0	1	0	0	0	0	3
OMANI	1	0	0	0	0	0	0	0	0	0	0	0	1
MYANMAR	0	0	0	0	0	0	0	0	0	0	0	0	0
NEWZERLAND	0	1	1	3	3	0	0	0	0	1	0	1	10
NORWEGIAN	1	0	0	0	0	0	0	0	0	0	0	1	2
Pakistan	1	0	0	1	3	0	0	0	0	0	0	0	5
PHILIPINES	0	0	0	0	0	0	0	0	0	0	0	0	0
PERU	0	0	0	0	0	0	0	1	0	0	0	0	1
POLISH	0	0	2	0	1	0	0	0	0	1	0	0	4
PORTUGUESE	0	0	0	0	1	0	0	0	0	0	0	0	1
ROMANI	0	0	0	0	1	0	0	0	0	0	0	0	1
RUSSIAN	0	1	1	0	3	1	1	0	4	2	0	1	14
SAUDI	0	0	0	1		0	0	0	0	0	0	1	2
SERESS	0	0	0	0	0	0	0	0	0	0	0	0	0
SHRELANKA	0	0	0	0	0	0	0	1	0	0	0	0	1
SINGAPOREAN	0	0	0	1	2	2	0	1	0	0	1	0	7
SPANISH	2	4	1	0	4	0	0	0	0	0	1	1	13
SOUTH AFRICAN	0	0	0	0	0	0	0	0	0	0	1	0	1
SWEDEN	0	0	0	0	1	0	0	0	1	0	1	0	3
SWISS	0	1	0	3	0	0	0	1	0	0	0	0	5
TAIWAN	1	0	0	0	1	1	0	1	0	1	0	0	5
TANZANIAN	0	0	0	0	0	0	0	0	0	0	0	0	0
THAILAND	0	0	0	0	0	0	0	0	0	0	0	0	0
TRUKEY	0	0	1	0	0	0	0	0	1	0	0	0	2
UZBEKISTAN	0	0	0	0	0	0	0	1	0	0	0	0	1

Nationality	Shrawan	Bhadra	Ashoj	Kartik	Mangsir	Paush	Margh	Falgun	Chaitra	Baisakh	Jestha	Ashad	Total
UKRAINIAN	0	0	0	0	0	0	0	0	0	0	0	0	0
VIETHANAM	0	0	0	0	0	0	0	0	0	0	0	0	0
ECUADOR	0	0	0	0	0	0	0	0	0	0	1	0	1
YEMAN	0	0	0	0	0	0	0	0	0	0	0	1	
ZIMBAMBE	0	0	0	0	0	0	0	0	0	0	0	0	0
COMORES	0	0	0	0	0	0	0	0	0	0	0	0	0
TOTAL	48	51	47	71	86	71	34	46	69	73	59	32	687

SOURCE: DEPARTMENT OF TOURISM, TOURIST POLICE

TABLE: 11.3 TOURIST RELATED ACCIDENT/INCIDENT REPORTED BY GENDER, 2073/74

GENDER	Shrawan	Bhadra	Ashoj	Kartik	Mangsir	Paush	Margh	Falgun	Chaitra	Baisakh	Jestha	Ashad	Total
Female	29	32	23	30	38	45	25	29	43	30	27	17	368
Male	19	19	24	41	48	26	9	17	26	43	32	15	319
TOTAL	48	51	47	71	86	71	34	46	69	73	59	32	687

SOURCE: DEPARTMENT OF TOURISM, TOURIST POLICE

TABLE: 11.4 BASIS OF INVESTIGATION 2073-074

MONTH	Shrawan	Bhadra	Ashoj	Kartik	Mangsir	Paush	Magh	Falgun	Chaitra	Baisakh	Jestha	Ashad	TOTAL
CASE SOLVE IN OFFICE	3	2	1	1	1	1	2	0	0	0	0	1	12
MAJOR CASE FORWARDED	1	0	0	0	0	1	0	1	3	1	2	1	10
FORWARDED FOR INVESTIGATION (DOCUMENTATION)	44	49	46	70	85	69	32	45	66	72	57	24	659
TOTAL	48	51	47	71	86	71	34	46	69	73	59	32	687

SOURCE: DEPARTMENT OF TOURISM, TOURIST POLICE