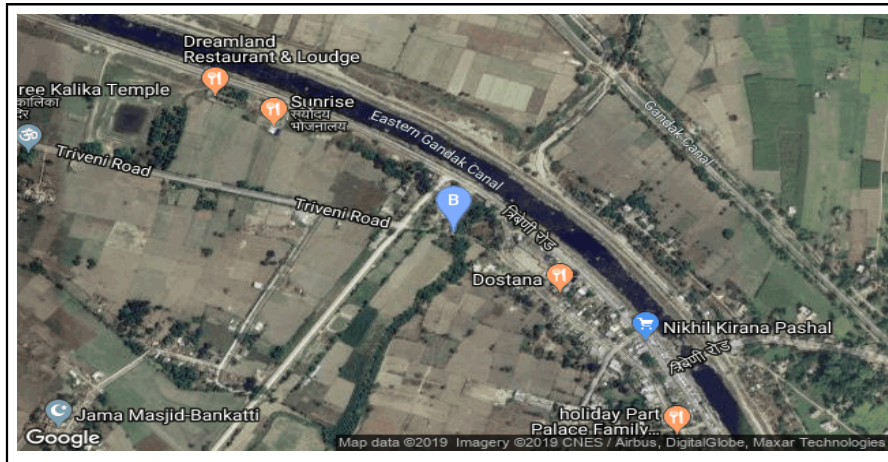


New Crossing Bridge:45-F165-001 (Amchur Khola)

General

Name of Bridge/River: Amchur Khola	T.Length: 18.5
Road Name: Pratapur - Raninagar(F165)	Road Length: 19
Chainage: 13+000	Division Road Office: Butwal
Latitude: 27.456639	Longitude: 83.898667
Left Bank Location	Right Bank Location
District: Nawalparasi	District: Nawalparasi
Municipality/VDC: Tribenisusta	Municipality/VDC: Tribenisusta

Location Map



Photographs



Caption:from upstream right



Caption:from downstream right