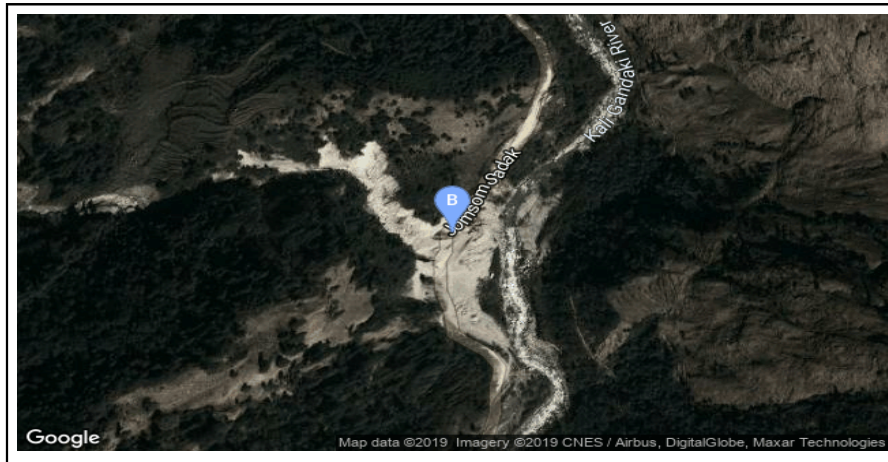


New Crossing Bridge:48-F042-045 (Ghasa Khola)

General

Name of Bridge/River: Ghasa Khola	T.Length: 15
Road Name: Pokhara - Baglung - Beni - Jomsom(F042)	Road Length: 292
Chainage: 126+25.0000000000006	Division Road Office: Baglung
Latitude: 28.587495	Longitude: 83.645064
Left Bank Location	Right Bank Location
District: Mustang	District: Mustang
Municipality/VDC:	Municipality/VDC:

Location Map



Photographs



Caption:Longitudinal section



Caption:Cross Section