

Nepal Telecommunications Authority

MIS Report

Kartik, 2074 (18, October, 2017 – 16, November 2017)

**P.O. Box No. 9754
Kamaladi, Kathmandu
Phone No.: +977-1-4254681
Fax No.: +977-1-4255250
E-mail: ntra@nta.gov.np, info@nta.gov.np
URL: www.nta.gov.np**

**Published on
Poush, 2074 (January, 2017)**

Telecom Statistics :- Data of Kartik, 2074 (18, October 2017)

1.1 Subscription of Voice Telephony Service :-

| Services Operators | Fixed | | Mobile | | Others | | Total |
|--------------------|---------------|---------------|-----------------|----------------|---------------|-------------|-----------------|
| | PSTN | WLL | GSM | CDMA | LMS | GMPCS | |
| NDCL | 679589 | 121031 | 16065510 | 1520400 | - | - | 18386530 |
| UTL | - | 50135 | - | - | 476735 | - | 526870 |
| NCELL | - | - | 16305376 | - | - | - | 16305376 |
| CGC* | **2832 | - | - | - | 155 | - | 2987 |
| NSTPL* | - | 2984 | - | - | 368684 | - | 371668 |
| STPL | **598 | - | 1719012 | - | - | - | 1719610 |
| Others | - | - | - | - | - | 1742 | 1742 |
| Total | 683019 | 174150 | 34089898 | 1520400 | 845574 | 1742 | 37314783 |
| | 857169 | | 35610298 | | 847316 | | |

| Services | Subscription (%) |
|---------------------|------------------|
| Fixed | 3.24 |
| Mobile | 134.41 |
| Others (LMS, GMPCS) | 3.20 |
| Total | 140.85 |

Population of Nepal 26,494,504 (Source: cbs.gov.np)

1.2 Data/Internet Services

| Services | Subscribers | | | | | | Total |
|----------------------------|---------------------------------|--------------|----------------|---------------|-----------|---------------|-----------------|
| | NDCL | UTL | Ncell | STPL | CGC* | ISPs | |
| Dialup (PSTN+ISDN) | - | - | - | - | - | 152 | 152 |
| Wireless | - | - | - | - | - | 58739 | 58739 |
| Cable Modem/ Optical Fibre | - | - | - | - | - | 263542 | 263542 |
| ADSL | 191585 | - | - | - | - | - | 191585 |
| GPRS,EDGE,WCDMA | 8447689 | - | 7255733 | 240311 | - | - | 15943733 |
| CDMA 1X, EVDO | 136573 | 63203 | - | - | - | - | 199776 |
| WiMAX | 16985 | - | - | - | - | - | 16985 |
| VSAT based Internet | - | - | - | - | 13 | - | 13 |
| Total | 8792832 | 63203 | 7255733 | 240311 | 13 | 322433 | 16674525 |
| | Internet Penetration (%) | | | | | | 62.94 |

1.3 Public Call Centres (PCO)

| Services | Subscribers |
|---------------------|--------------|
| Rural PCO's of CGC | 1,447 |
| Rural PCO's of STPL | 598 |
| Total | 2,045 |

NDCL- Nepal Doorsanchar Company limited

UTL- United Telecom Limited

NCell- Ncell Pvt.Ltd.

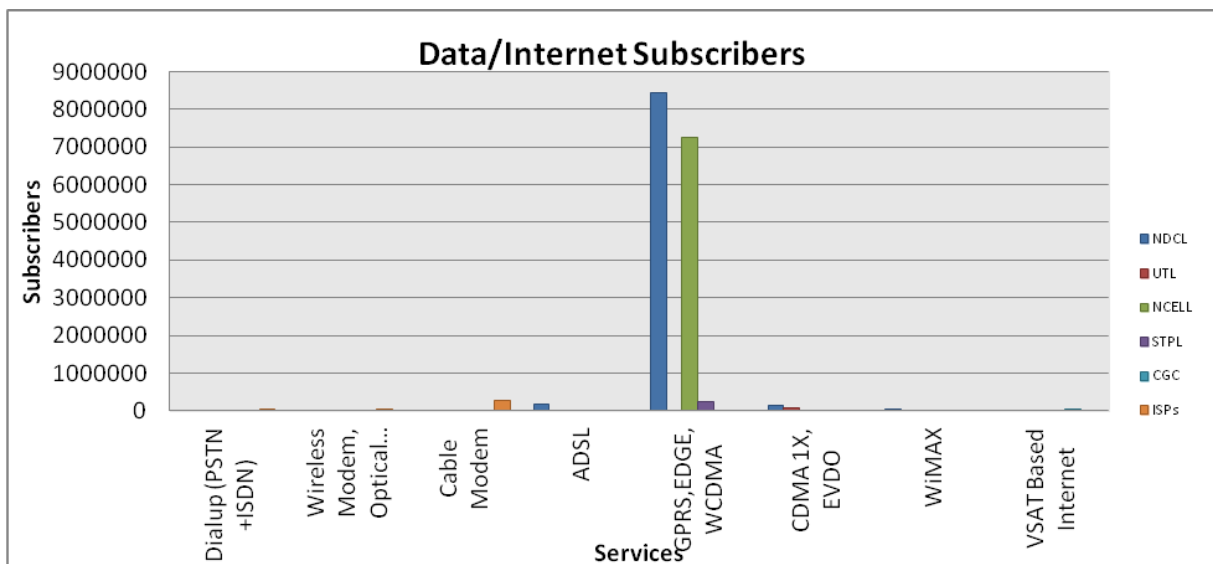
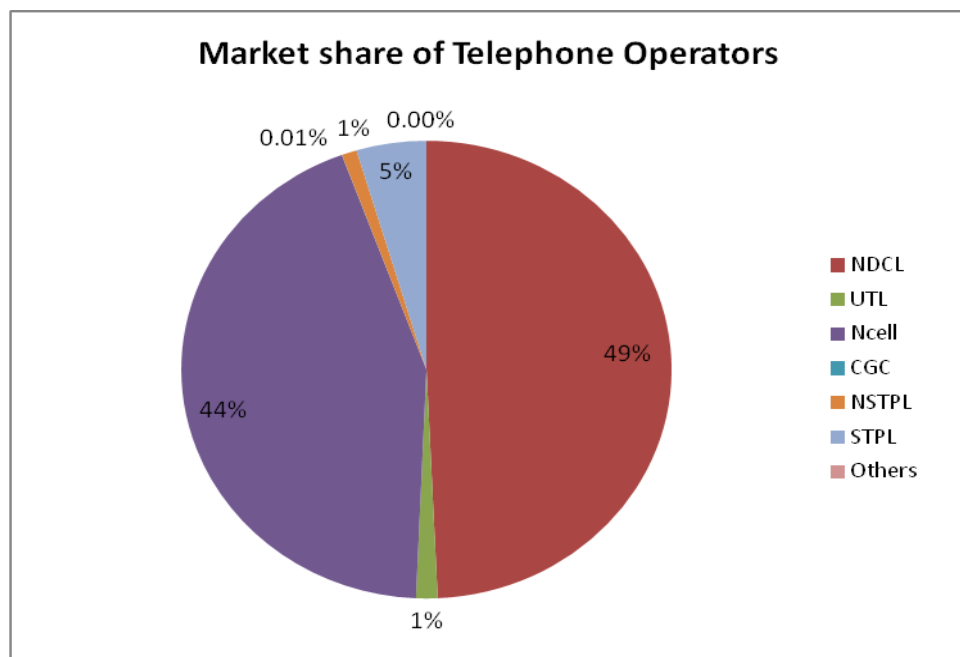
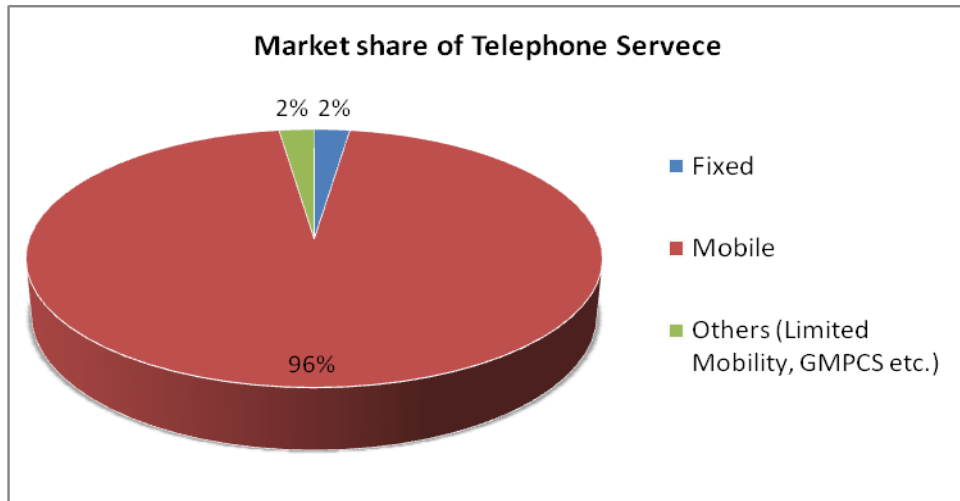
CGC- C.G.Communication Pvt.Ltd

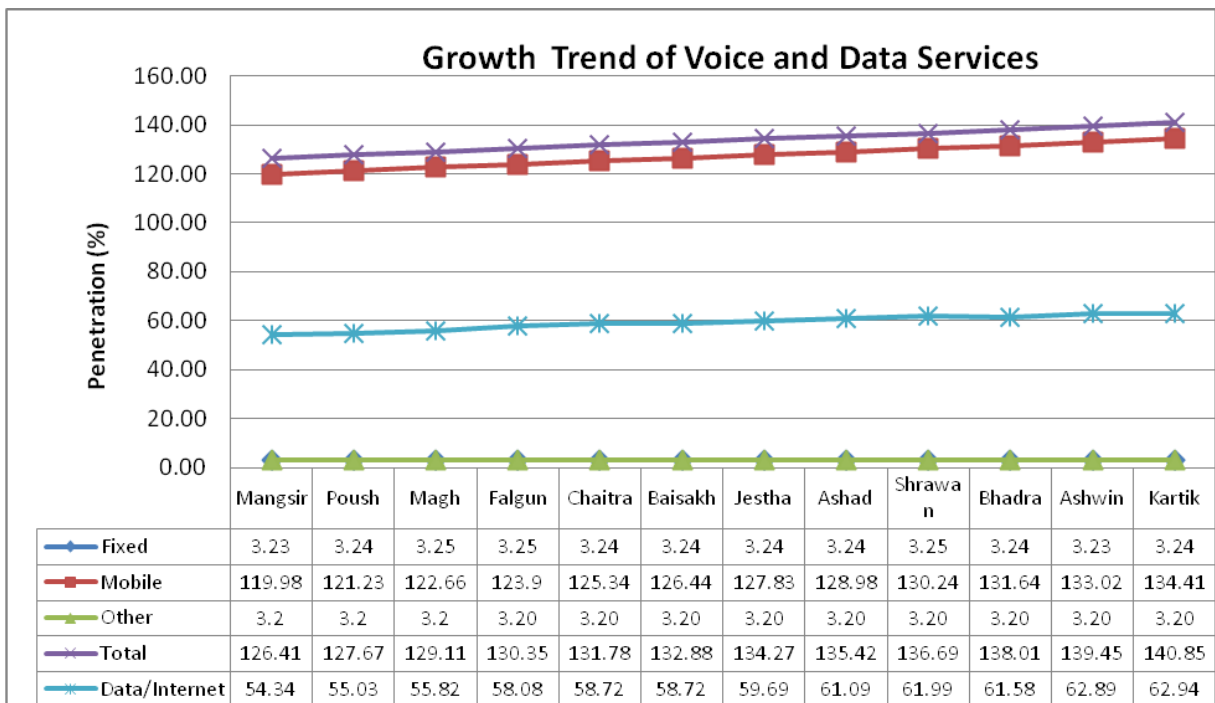
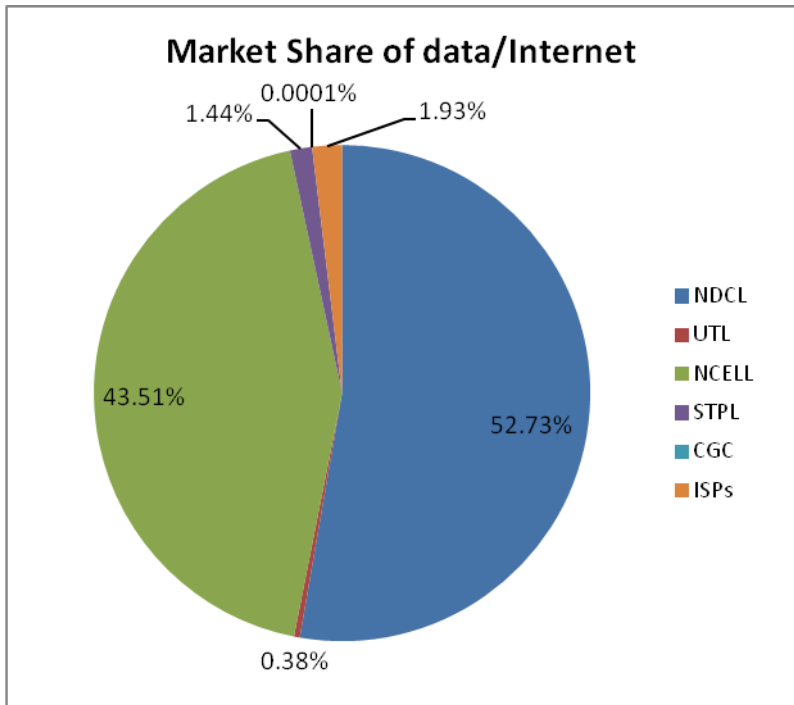
NSTPL- Nepal Satellite Telecom Pvt.Ltd

STPL- Smart Telecom Pvt.Ltd

* Data of the month of Kartik, not received.

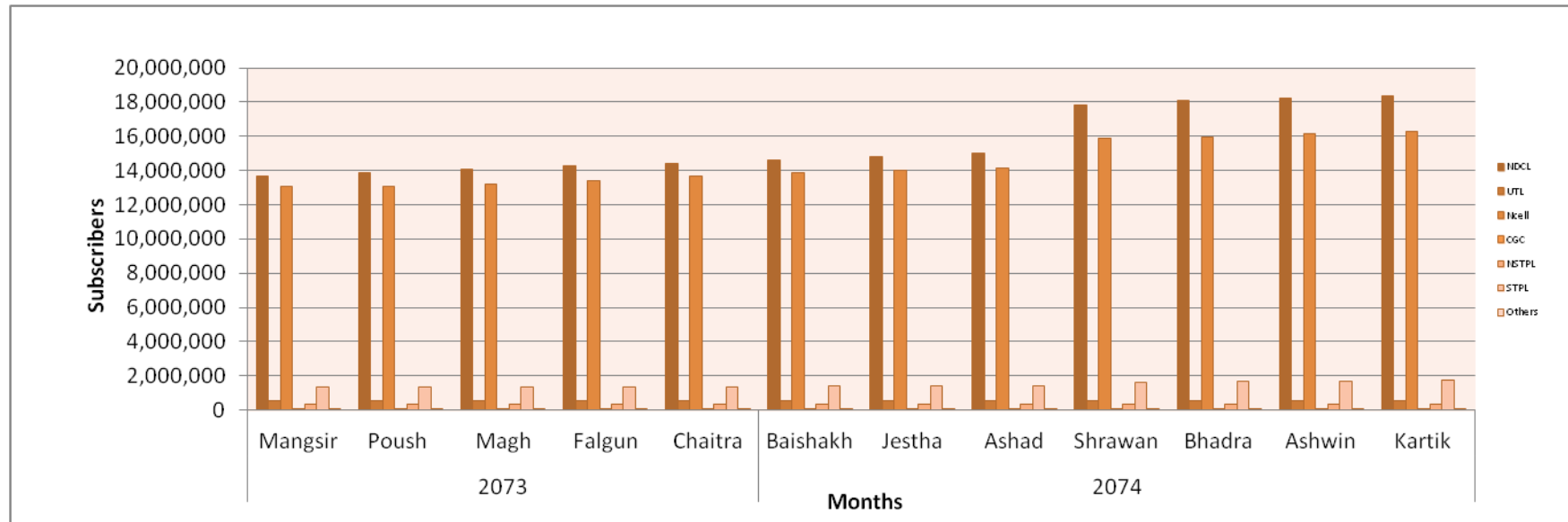
** VSAT based subscribers.





Glimpse of telephone subscribers in one year

| S.No. | Operators | 2073 | | | | | 2074 | | | | | | |
|-------|-----------|------------|------------|------------|------------|------------|------------|------------|------------|------------|------------|------------|------------|
| | | Mangsir | Poush | Magh | Falgun | Chaitra | Baishakh | Jestha | Ashad | Shrawan | Bhadra | Ashwin | Kartik |
| 1 | NDCL | 13,684,219 | 13,870,032 | 14,062,135 | 14,252,058 | 14,434,489 | 14,617,068 | 14,820,201 | 15,014,434 | 17,798,538 | 18,095,755 | 18,195,450 | 18,386,530 |
| 2 | UTL | 526,078 | 526,274 | 526,375 | 526,419 | 526,451 | 526,539 | 526,635 | 526,689 | 526,869 | 526,869 | 526,869 | 526,870 |
| 3 | Ncell | 13,039,492 | 13,075,450 | 13,222,996 | 13,434,031 | 13,639,969 | 13,847,160 | 14,006,458 | 14,145,758 | 15,889,078 | 15,931,693 | 16,148,290 | 16,305,376 |
| 4 | CGC | 2,987 | 2,987 | 2,987 | 2,987 | 2,987 | 2,987 | 2,987 | 2,987 | 2,987 | 2,987 | 2,987 | 2,987 |
| 5 | NSTPL | 370,356 | 371,148 | 371,668 | 371,668 | 371,668 | 371,668 | 371,668 | 371,668 | 371,668 | 371,668 | 371,668 | 371,668 |
| 6 | STPL | 1,359,584 | 1,361,697 | 1,362,735 | 1,363,844 | 1,372,976 | 1,382,538 | 1,389,864 | 1,398,100 | 1,623,138 | 1,650,188 | 1,700,915 | 1,719,610 |
| 7 | Others | 1,742 | 1,742 | 1,742 | 1,742 | 1,742 | 1,742 | 1,742 | 1,742 | 1,742 | 1,742 | 1,742 | 1,742 |



1.4 License issued as of Kartik, 2074 (18, October 2017)

| S. No. | Name of the Services | Number of the licensee |
|--------|---|------------------------|
| 1. | Basic Telecommunications Service | 2 |
| 2. | Basic Telephone Service | 2 |
| 3. | GSM Cellular Mobile Service | 2 |
| 4. | Network Service Provider | 15 |
| 5. | VSAT Users | 8 |
| 6. | Internet (With E-mail) Service | 77 |
| 7. | GMPCS Service | 2 |
| 8. | Rural Telecom Service | 1 |
| 9. | Limited Mobility Service | 7 |
| 10. | International Trunk Telephone Service | 1 |
| 11. | VSAT Users (Rural Area) | 8 |
| 12. | Internet (With Email) Service in Rural Area | 5 |
| 13. | Pre-Paid Calling Card Service | 1 |
| | Total | 131 |

* Year wise licensing activity of NTA is shown in Appendix-1

2. NTA Activities

2.1 Type Approval Certificate:

List of type approval certificates issued in the month of Kartik, 2074

| S. No. | Type of Device | Type of certificate | Number |
|--------|--------------------|---------------------|--------|
| 1. | Short Range Device | Provisional | 6 |
| | | Periodic permanent | 8 |
| 2. | GSM Mobile Handset | Provisional | 41 |
| | | Periodic permanent | 8 |
| 3. | GSM Device | Provisional | 1 |
| 4. | Tablet | Provisional | 1 |
| | | Periodic permanent | 3 |

2.2 Foreign Currency Recommendation: NTA recommended foreign currency equivalent to NRs. 16,84,26,689.95 (Approx) for the payment of Bandwidth & other service Charges of different Telecom operators, during the month of Kartik, 2074

2.3 Recommendation for import of Telecommunications Equipment : NTA recommended foreign currency equivalent to NRs.10,66,416.00 (Approx)for the import of Telecommunications equipment of different Telecom operators, during the month of Kartik, 2074

2.4 Issuance of License in Kartik, 2074

| | | |
|----|--|----------------|
| 1. | Mahakali digital Network Pvt. Ltd., Kamaladi, Kathmandu. | Internet/Email |
| 2. | Surkhet Cable T V Pvt. Ltd., Birendranagar, Surkhet. | |
| 3. | Prabhau Digital Pvt. Ltd., Kamaladi , Kathmandu. | |
| 4. | L.N infotecha Pvt. Ltd., Pokhara, Kaski | |
| 5. | Sinko I T Enginerng pvt. Ltd., New baneshwor, kathmandu | |
| 6. | Galkot Link pvt ltd., Galkot, Baglung | |

2.5 Renewal of License during Kartik, 2074

| | | |
|----|-----------------------------------|-------------------------------|
| 1. | Ncell Pvt. Ltd , Nakkhu, Lalitpur | International Trunk Telephone |
|----|-----------------------------------|-------------------------------|

3. Human Resource and Capacity Building:

3.1. International Training, Seminar, Study and Observation Tours/Visit: - N/A

3.2. National Training, Seminar, Study and Observation Tours/Visit: -N/A

4. NTA's Major Decisions during the month of Kartik, 2074: N/A

5. List of the members of Nepal Telecommunications Authority

| S.N. | Members Name | Designation | Date of Appointment |
|------|-------------------------|-------------|---------------------|
| 1 | Mr. Digambar Jha | Chairman | 2069/08/19 |
| 2. | Mr. Dhan Raj Gnyawali | Member | 2069/08/19 |
| 3. | Mr. Tika Prasad Upreti | Member | 2071/07/27 |
| 4. | Mr. Chudamani Chaulagai | Member | 2074/02/19 |
| 5. | Mr. Teknath Acharya | Member | 2074/02/19 |

For Details Contact:

Economic Analysis and Consumer Protection Section

Nepal Telecommunications Authority

Kamaladi, Kathmandu

Phone No.: +977-1-4254681 (Ext. 244)

Fax No.: +977-1-4255250

E-mail: info@nta.gov.np, ntra@nta.gov

Appendix-I

A Licensing Activity at a glance as of 15 July 2017 (End of Ashad 2074)

| S. No. | Services | Fiscal Year | | | | | | | | | | | | | | | | | | Total no. of License | License Cancelled | Existing no. of License |
|--------------|--------------------------|-------------|-----------|-----------|-----------|-----------|-----------|-----------|-----------|-----------|-----------|-----------|-----------|-----------|----------|----------|----------|----------|-----------|----------------------|-------------------|-------------------------|
| | | 56/57 | 57/58 | 58/59 | 59/60 | 60/61 | 61/62 | 62/63 | 63/64 | 64/65 | 65/66 | 66/67 | 67/68 | 68/69 | 69/70 | 70/71 | 71/72 | 72/73 | 73/74 | | | |
| 1 | Basic Telecommunication | 0 | 1 | 0 | 1 | 0 | 0 | 0 | 0 | 1 | 0 | 0 | 0 | 0 | 0 | 0 | 0 | 0 | 0 | 3 | 1 | 2 |
| 2 | Basic Telephone Service | 0 | 0 | 0 | 0 | 0 | 0 | 0 | 0 | 0 | 0 | 0 | 0 | 0 | 1 | 0 | 0 | 0 | 1 | 2 | 0 | 2 |
| 3 | GSM Mobile | 1 | 0 | 0 | 0 | 0 | 1 | 0 | 0 | 0 | 0 | 0 | 0 | 0 | 0 | 0 | 0 | 0 | 0 | 2 | 0 | 2 |
| 4 | Network Service Provider | 6 | 1 | 3 | 0 | 1 | 0 | 0 | 2 | 1 | 0 | 1 | 0 | 0 | 0 | 2 | 1 | 0 | 3 | 21 | 8 | 13 |
| 5 | Pre-Paid Calling Card | 0 | 0 | 0 | 0 | 0 | 0 | 0 | 0 | 0 | 0 | 0 | 0 | 0 | 1 | 0 | 0 | 0 | 0 | 1 | 0 | 1 |
| 6 | VSAT User | 16 | 8 | 11 | 15 | 20 | 6 | 41 | 7 | 0 | 6 | 22 | 0 | 5 | 0 | 0 | 0 | 0 | 0 | 157 | 149 | 8 |
| 7 | Internet (with e-mail) | 13 | 2 | 3 | 2 | 6 | 6 | 7 | 3 | 3 | 7 | 12 | 5 | 1 | 0 | 5 | 3 | 7 | 23 | 108 | 37 | 71 |
| 8 | Radio Paging | 6 | 2 | 0 | 0 | 0 | 0 | 0 | 0 | 0 | 0 | 0 | 0 | 0 | 0 | 0 | 0 | 0 | 0 | 8 | 8 | 0 |
| 9 | Fax Mail | 4 | 2 | 0 | 0 | 0 | 0 | 0 | 0 | 0 | 0 | 0 | 0 | 0 | 0 | 0 | 0 | 0 | 0 | 6 | 6 | 0 |
| 10 | Video Conferencing | 1 | 0 | 0 | 0 | 0 | 0 | 0 | 0 | 0 | 0 | 0 | 0 | 0 | 0 | 0 | 0 | 0 | 0 | 1 | 1 | 0 |
| 11 | GMPCS | 0 | 0 | 0 | 2 | 0 | 0 | 0 | 1 | 0 | 0 | 0 | 0 | 0 | 0 | 0 | 0 | 0 | 0 | 3 | 1 | 2 |
| 12 | Rural Telecom | 0 | 0 | 0 | 0 | 1 | 0 | 0 | 0 | 1 | 0 | 0 | 0 | 0 | 0 | 0 | 0 | 0 | 0 | 2 | 1 | 1 |
| 13 | Limited Mobility | 0 | 0 | 0 | 0 | 0 | 0 | 2 | 4 | 4 | 3 | 35 | 61 | 0 | 0 | 0 | 0 | 0 | 0 | 109 | 102 | 7 |
| 14 | Int. Trunk Telephone | 0 | 0 | 0 | 0 | 0 | 0 | 0 | 0 | 2 | 0 | 0 | 1 | 1 | 0 | 0 | 0 | 0 | 0 | 4 | 2 | 2 |
| 15 | Rural VSAT User | 0 | 0 | 0 | 0 | 0 | 0 | 0 | 0 | 1 | 2 | 5 | 3 | 5 | 0 | 0 | 1 | 0 | 3 | 20 | 12 | 8 |
| 16 | Rural ISP | 0 | 0 | 0 | 0 | 0 | 0 | 0 | 0 | 0 | 1 | 5 | 0 | 0 | 0 | 2 | 1 | 2 | 0 | 11 | 5 | 6 |
| Total | | 47 | 16 | 17 | 20 | 28 | 13 | 50 | 17 | 13 | 19 | 80 | 70 | 12 | 2 | 9 | 6 | 9 | 30 | 458 | 333 | 125 |

Internet Subscriber's of Service as of Kartik, 2074

| S.No. | Company Name | Dialup | Wireless | Cable | Fiber | Total |
|-------|--|--------|----------|-------|--------|---------------|
| 1 | Mercantile Communication (Pvt). Ltd. DurbarMarg, Kathmandu | - | 560 | - | 1332 | 1892 |
| 2 | WorldLink Communications (Pvt.) Ltd. Jawalakhel, Lalitpur | - | 9554 | 6436 | 125120 | 141110 |
| 3 | Himalayan Online Services (Pvt) Ltd. Durbarmarg, Kathmandu | - | 500 | 4185 | 155 | 4840 |
| 4 | Vianet communicatuins Pvt. Ltd., Jawalakhel, Lalaitpur | - | - | - | 40661 | 40661 |
| 5 | Web Surfer Nepal Communication. System Pvt. Ltd.,Tinkune Kathmandu | - | 6664 | 570 | 1550 | 8784 |
| 6 | Subisu Cablenet Pvt.Ltd. Baluwatar, Kathmandu | - | 15288 | 44833 | 3315 | 63436 |
| 7 | Japan Nepal Information Communication Technology, Kalikasthan* | 152 | 115 | 35 | | 302 |
| 8 | Broadlink Network & Communication Pvt.Ltd., Kathmandu | - | 7820 | - | 8143 | 15963 |
| 9 | Sustainable Network Pvt.Ltd. Pulchok, Lalitpur | - | 146 | 3 | 1 | 150 |
| 10 | Nepal Net Sanchar, Biratnagar * | - | 60 | 15 | | 75 |
| 11 | Allied Net Link Technologies Pvt. Ltd., Marajgunj, Kathmandu | - | 100 | 225 | | 325 |
| 12 | ITEL communication Pvt. Ltd., Jawalakhel, Lalitpur* | - | - | 2071 | 3848 | 5919 |
| 13 | Eastern Networks Pvt. Ltd., Naxal, Kathmandu* | - | - | 206 | | 206 |
| 14 | Net Max Technologies P. Ltd, Anamnagar, Kathmandu | - | 4205 | 148 | 750 | 5103 |
| 15 | Fiber Online Pvt. Ltd., Jawalakhel, Lalitpur* | - | - | 474 | | 474 |
| 16 | Pokhara Internet Pvt. Ltd., Pokhara, Kaski* | - | - | 15 | | 15 |
| 17 | Cherry World Communication P.Ltd., New Baneshwor, Kathamandu* | - | 162 | 18 | | 180 |
| 18 | Classic Tech Pvt. Ltd., Baneshwor, Kathamandu* | - | 6014 | | 6687 | 12701 |
| 19 | Eastlink Technology Pvt. Ltd., Tripureshwor, Kathamandu | - | 680 | - | | 680 |
| 20 | TechMinds Network Pvt.Ltd., Narayangarh, Chitwan | - | 5860 | - | 6030 | 11890 |
| 21 | Bharahi Internet Techanologies p. Ltd., Srijana Chowk -8, Pokhara | - | 359 | - | 257 | 616 |
| 22 | IBSS Nepal Pvt. Ltd., Sinamangal, Kathmandu | - | 350 | - | 759 | 1109 |
| 23. | Arrownet Pvt. Ltd. , Tripureshwor, Kathmandu | - | 272 | - | 5700 | 5972 |
| 24. | Shikhar Net Pvt. Ltd. , Dhanagadhi, Kailali | - | 30 | - | - | 30 |
| | Total | 152 | 58739 | 59234 | 204308 | 322433 |

* Those ISP who did not submit the data for the month of Kartik.