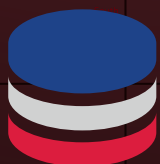


Nepal

DEVELOPMENT Atlas

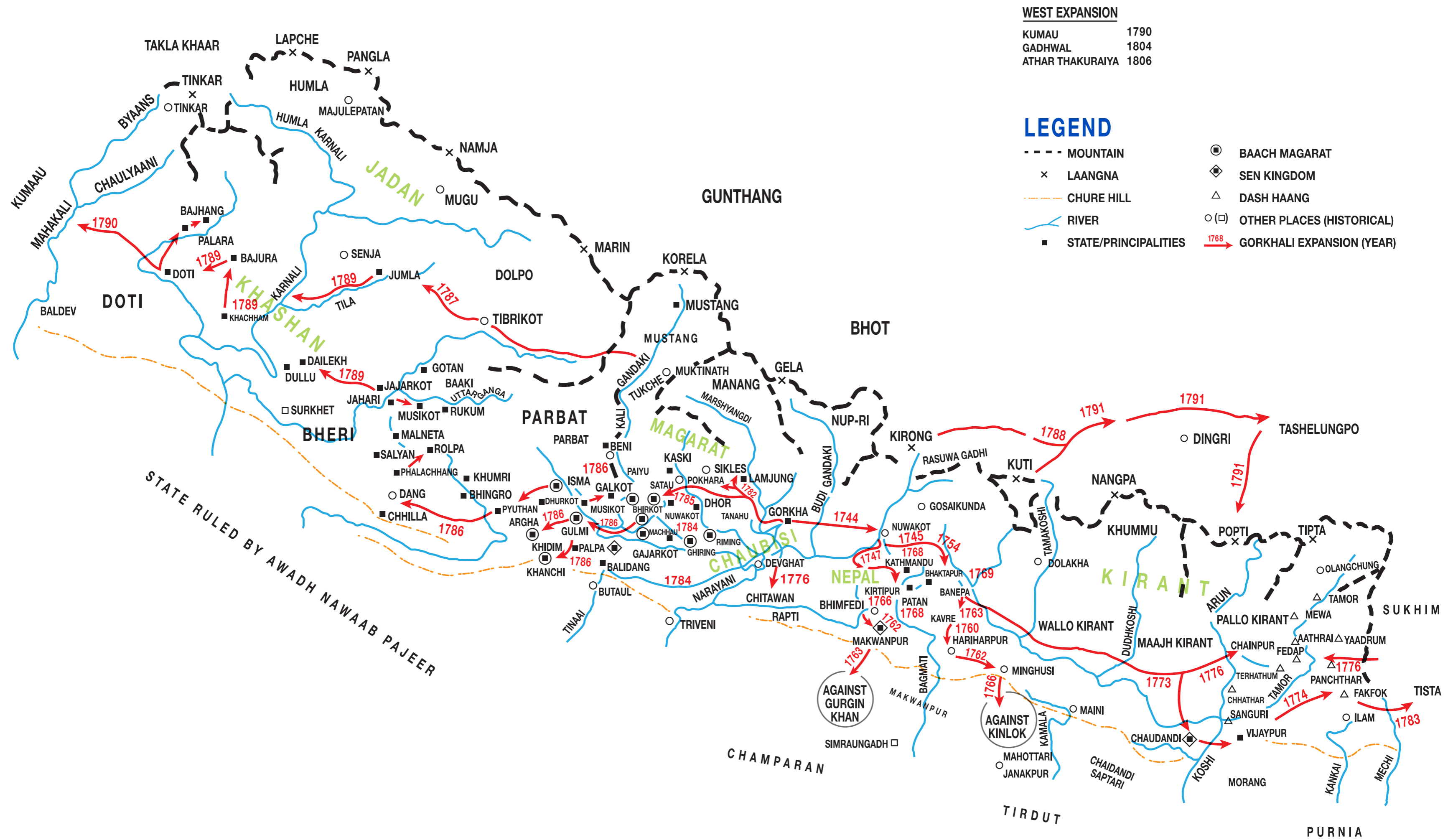


ELECTION



Nepal in Data

2019



18TH CENTURY MAP OF NEPAL

SOURCE: PANCHAYAT SMARIKA

NEPAL

DEVELOPMENT

Atlas

FOREWORD

ACKNOWLEDGEMENTS

Team leader: Santosh Gartaula

Deputy team leader & GIS specialist: Bipin Sinjali

Editor: Tirza Thiunessen

GIS technical guidance: Rajkumar Rimal

Data assistant: Sajani Lama Jimba

Infographics, Layout & Design : Niraj Shahi & Pramesh Dangol

First edition 2019

Bikas Udhyami's initiative Nepal in Data

Contents and information are free to use with academic citations without any modifications

ISBN 987-9937-0-5896-4

Bikas Udhyami's Initiative

Nepal in Data

Mani Marga, Chakupat, Lalitpur, Nepal

+977-1-5261093+977-9852052379

info@bikasudhyami.com

www.bikasudhyami.com

www.nepalindata.com

The advancement of Geographic Information System (GIS) has brought significant changes when it comes to capturing, storing, analyzing, managing and presenting spatial and geographical data. As an interactive visualization and decision-support tool, GIS, nowadays, plays a crucial role in evidence-based development planning by showing the distribution of development across Nepal. It also helps the decision makers at provincial and local spheres by identifying the potentialities of and barriers to development of their respective areas.

Bikas Udhyami's Nepal in Data (NiD) initiative has come out with the 'Nepal Development Atlas', which visualizes Nepal's current development status through GIS based visualization. We hope that the very first attempt of Nepal in Data to bring out this comprehensive and interestingly presented visualizations of Nepal's development status along with geographical status will help researchers, policy makers, development practitioners, journalists, academia, students, and people to make an insightful and evidence-based decisions.

The Atlas consists of 15 chapters on the political status, socio-economic status and geography of Nepal including all the seven provinces. The chapters visualize data and information on public administration, elections, physical geography, demography, housing and amenities, socio-economic development, education, health, employment, agriculture and land, economic, market and finance, energy and environment, industry, infrastructure, communication and technology, law and justice, and state and politics.

I would like to thank our hardworking and dedicated team of Nepal in Data specially Bipin Sinjali for generating GIS maps, Niraj Shahi, Pramesh Dangol for presenting them and Sajani Lama Jimba for collecting and cleaning the data for the Atlas. I also extend my thanks to all who encouraged and supported us while bringing out the Atlas.

Santosh Gartaula, CEO
Bikas Udhyami

TABLE OF CONTENTS

01

ADMINISTRATION

ADMINISTRATIVE MAP 14-19

Local Levels, Provinces with Province Capital City, and Election Map

03

DEMOGRAPHY

POPULATION BY CASTE AND SEX, 2011 37-40

Chhetri, Brahmin, Magar, Tharu, Tamang, Newar, Kami, Muslim, Yadav, Rai, and other

POPULATION BY MOTHER TONGUE AND SEX, 2011 41-44

Nepali, Maithali, Bhojpuri, Tharu, Tamang, Newari, Bajjika, Magar, Doteli, Urdu, & other

POPULATION BY DISABILITY AND SEX, 2011 45-48

Total disability, Key Provisions of the Disability Right Act, Physical, Low Vision, Deaf & Hard Hearing, Deaf and Blind, Speech Problem, Mental, Intellectual, Multiple, and Disability Statistics in Nepal

ABSENTEE HOUSEHOLDS AND POPULATION, 2011 49-50

Total Households, Absentee Households, Absentee Population by Sex, Number of Absentee Populations and Households and Not Stated Absentee Population

05

SOCIO-ECONOMIC DEVELOPMENT

DEVELOPMENT INDICES, 2018/19 67-73

Human Poverty Index (HPI), Life Expectancy, Multi-Dimensional Poverty Index, Gender Ratio, and Literacy Rate, Human Development Index (HDI) by Local Level, Human Poverty Index (HPI) by Local Level, and Socio-economic Discrimination Index by Local Level

02

PHYSICAL GEOGRAPHY

GEOLOGY MAP 22-29

Land Cover, Aspect Map, Slope Map, Bridge, Road and River, and Tree Cover and Preserved Area

SOIL 30-35

Landform, Parent Material, & Soils

04

HOUSING AND AMENITIES

HOUSEHOLD FOUNDATION, 2011 52-54

Mud Bonded Bricks and Stone, Cement Bonded Bricks and Stone, RCC with Pillar, Wooden Pillar, Other, and Not Stated

OUTER WALL OF HOUSE, 2011 55

Mud Bonded Bricks and Stone, Cement Bonded Bricks and Stone, Wood Planks, Bamboo, Unbaked Bricks, Other, Not Stated, and Households by Outer Wall of House/Housing Unit

OWNERSHIP OF HOUSE, 2011 56-57

Owned, Rented, Institutional, and Other

ROOF OF HOUSE, 2011 58

Thatch/Straw, Galvanized Iron, Tile Slate, RCC, Wood Plank, Mud, Other, and Not Stated

HOUSEHOLDS BY TYPE OF FACILITIES, 2011 59-60

Without Facilities, With at Least One Facilities, Radio, Cable Television, Computer, Internet, Telephone, Mobile, Motor, Motor Cycle, Cycle, Other Vehicle, Refrigerator, Not Stated, and Households by Types of Facilities

HOUSEHOLD BY TYPE OF TOILET, 2011 61-62

Without Toilet Facilities, With Flush Toilet Facilities, With Ordinary Toilet Facilities, and Not Stated Toilet Facilities

MAIN SOURCE OF DRINKING WATER, 2011 63

Tap Pipe Water, Tube Well and Hand Pump, Covered Well and Kuwa, Uncovered & Kuwa, Spout Water, River & Stream, Other, and Not Stated

USUAL SOURCE OF LIGHTING, 2011 64

Electricity, Kerosene, Biogas, Solar, Other, Not Stated, and Households by Usual Source of Lighting

USUAL FUEL FOR COOKING, 2011 65

Wood and Firewood, Kerosene, LP Gas, Cow Dung, Biogas, Electricity, Other, and Not Stated

TABLE OF CONTENTS

06

EDUCATION

NO OBJECTION CERTIFICATE(NOC) ISSUED TO STUDENT FOR FOREIGN STUDY, 2016/17 75
EDUCATION FACILITY, 2011 76-77

Education Institutions

NUMBER OF SCHOOLS AND STUDENTS, 2017 78-79

Total Number of Schools at Local Level, Community Schools at Local Level, Institutional Schools at Local Level, Total Students by Sex Grade 1 to 12, Basic-Grade 1 to 5, Basic-Grade 6 to 8, Secondary-Grade 9 to 10, and Secondary-Grade 11 to 12

STUDENT ENROLLMENT BY SEX, 2017 91-92

Total Students, Male Student, Female Student, Basic-Grade 1 to 5, Basic-Grade 6 to 8, Secondary-Grade 9 to 10, Secondary-Grade 11 to 12, and Total Enrollment in School Education

NET ENROLLMENT RATE OF STUDENT BY SEX, 2017 93-94

Basic-Grade 1 to 5, Basic- Grade 6 to 8, Secondary-Grade 9 to 10, Secondary-Grade 11 to 12, and Net Enrollment Rate (NER) of Nepal

SCHOOLS, STUDENT AND TEACHER RATIO, 2018 95

Teacher Students Ratio: Basic- 1 to 5, Teacher Students Ratio: Basic-6 to 8, Teacher Students Ratio: Secondary-9 to 10,

Teacher Students Ratio: Secondary-11 to 12, School Student Ratio: Basic-1 to 5, School Students Ratio: Basic- 6 to 8,

School Students Ratio: Secondary- 9 to 10, School Students Ratio: Secondary-11 to 12

SCHOOLS WITH FACILITIES, 2014 96-97

Total Number of Schools with Toilets, Toilet for Girls Only, Toilet for Teachers Only, Number of School Buildings with Rigid, Weak Buildings, Required Classrooms, Unusable Classrooms, Usable Classrooms, Water, Internet, Electricity, Computer Facilities, Computer for Administration, Computer for Teaching, and School Facilities in Nepal

LITERACY RATE 5 YEARS AND ABOVE BY SEX, 2011 98-99

Literacy Rate of age 5 Years and Above, Literacy Rate of Population Aged Five and Above, Who Can Read and Write, Who Can Read Only, Who Can't Read and Write

08

LABOUR AND EMPLOYMENT

LABOUR PERMIT ISSUED, 2016/17 110-111

Migrant Workers Obtained Labor Permit Through Recruiting Agency (Excluding Individual Applications) by Sex, Migrant Worker Obtained Labour Permit on Their Own (Individual Applications) by Sex

PERSON ENGAGED BY SEX AND SECTORS, 2018 112-137

Total Number of Persons Engaged by Local Level, Total Number of Male Persons Engaged by Local Level, Total Number of Female Persons Engaged by Local Level, Agriculture, Forestry, Fishing by Local Level, Manufacturing by Local Level, Mining, Electricity, Gas, Water supply & Construction by Local Level, Wholesale, Retail Trade by Local Level, Transportation, Storage, Information, Communication by Local Level Accommodation, Food by Local Level, Education by Local Level, Human Health, Social work by Local Level, and Real Estate, Professional, Scientific, Administrative, Arts, Entertainment and Other by Local Level Labour Market Status by Province and Sex, 2017/18

LABOUR MARKET STATUS BY PROVINCE AND SEX, 2017/18 138-141

APPLICANTS ISSUED TO DESTINATION COUNTRIES AND TERRITORIES FOR LABOUR PERMIT, 2016/17 142

WORKING POPULATION, 2017/18 143-144

Number of Youth (Aged 15–24 Years) not in Education, Employment or Training (NEET), Working Population by Sex, Working Population by Age (15 Years and Above), and Nepal Working Population by Age Group (15 Years and Above)

07

HEALTH

IMMUNIZATION, 2016/17 101

Immunized with BCG Under 1 Year, Immunized with DPT-HEP-HIP 3rd Under 1 Year,

Immunized with OPV 3rd Under 1 Year, Immunized with PCV 3rd Under 1 Year, and

Immunized with MR 1st Dose to Children

HEALTH FACILITIES RECIPIENT, 2016/17 102-105

Health Care Center, Treatment by ART, OPD Visits, and OPD Visits by Sex

HEALTH INSTITUTIONS, 2016/17 106-107

Number of Government Hospitals, Primary Health Care Centers (PHCC), Health Posts, Primary Health Centers (PHC), ORC, EPI Clinics, and FCHV

DETECTION OF DISEASE, 2016/17 108

Leprosy New Case Detection Rate per 100,000, Leprosy Prevalence Rate per 1000, Case

Notification Rate Tuberculosis (TB), TB New Case, HIV Tested, HIV New Positive Cases, PMCT Tested, PMCT Positive

TABLE OF CONTENTS

09

AGRICULTURE AND LAND

STATUS OF LAND HOLDING, 2011 146-147

Gravity, Dam Reservoir, Holding, Reporting, Mixed, More than 1 Tenure Forms, One Other Tenure Forms, One Tenure Forms That are Rented from Other, Other, Owned 1 Tenure Form, Plumping, and Area Rented From Others Under One Tenure Form

LAND HOLDING AREA, 2011 148-149

Gravity, Dam Reservoir, Holding, Mixed, One Other Tenure Forms, One Tenure Forms That are Rented From Other, Other, Other Tenure More Than One, Owned 1 Tenure Form, Owned More Than One Tenure Forms, Plumping, Rented More Than One Tenure Forms, and Land holding Area

FOOD AVAILABILITY AND REQUIREMENT, 2016/17 150-151

Food Balance, Required Food, Available Barley, Buckwheat, Edible Food, Maize, Millet, Rice, Wheat, and Food Availability and Requirement

CASH CROPS BY AREA, PRODUCTION AND YIELD, 2016/17 152-157

Cardamom, Chilli, Garlic, Ginger, Oilseed, Turmeric, Potato, Sugarcane, and Rubber

CEREAL CROPS BY AREA, PRODUCTION AND YIELD, 2016/17 158-163

Barley, Buckwheat, Maize, Millet, Paddy, and Wheat

SUMMER FRUITS BY AREA, PRODUCTION AND YIELD, 206/17 164-169

Arecanut, Banana, Coconut, Guava, Jackfruit, Litchi, Mango, Papaya, and Pineapple

WINTER FRUITS BY AREA, PRODUCTION AND YIELD, 2016/17 170-173

Apple, Apricot, Peach, Pear, Persimon, Plum, Pomegranate, Walnut, Status of

Commercial Tea Farming in Nepal 2018, and Overview on Nepali Poultry

OILSEEDS BY AREA, PRODUCTION AND YIELD, 2016/17 174-179

Mustard, Groundnut, Rayo, Sarsoon, Sesame, Sunflower

PULSE CROPS BY AREA, PRODUCTION AND YIELD, 2016/17 180-182

Chickpea, Grasspea, Horsegram, Lentil, Pigeonpea, Soyabean, and Other

LIVESTOCK, 2016/17 183-184

Buffalo, Cattle, Duck, Fowl, Goat, Sheep, Pigs, Total Livestock Provincewise, Milking Buffalo, and Milking Cow

EGG PRODUCTIONS, 2016/17 185

Total Egg Production, Production of Duck Egg, and Production of Hen Egg

MEAT PRODUCTIONS, 2016/17 186-187

Total Production of Meat, Buff, Chevron, Chicken, Duck, Mutton, and Pork

MILK AND WOOL PRODUCTIONS, 2016/17 188

Total Production of Milk, Buffalo Milk, Cow Milk, Wool Production, and Milk Production in Nepal

FISHERY, 2016/17 189

Fish Production, Fish Yield, Ponds, and Fishery

SALES OF FERTILIZER, 2016/17 190

Sale of DAP, Potash and Urea by Agriculture Inputs Company Ltd. (AICL) and Salt Trading Company Ltd. (STCL)

10

ECONOMY, MARKET AND FINANCE

GROSS VALUE ADDED BY INDUSTRIAL DIVISION AT CURRENT PRICES, 2018/19 192-193

Gross Domestic Product (GDP), Agriculture and Forestry, Fishing, Mining and Quarrying, Manufacturing, Electricity Gas and Water, Construction, Wholesale and Retail Trade, Hotels and Restaurants, Transport, Storage and Communications, Financial Intermediation, Real Estate, Renting and Business Activities, Public Administration and Defence, Education, Health and Social Work, Other Community, Social and Personal Service Activities

BANKING AND FINANCE, 2019 194-215

Total Bank Access Points, Access Point to Commercial Banks, Development Banks, Finance Companies, Micro-finance Institutions, Registered Saving Accounts, Active Banking Account by Sex, Outstanding Credit, and Saving

BUDGET, 2018/19 216-217

Total Budget, Recurrent, Capital, and Allocation from Center Government

TABLE OF CONTENTS

11

ENERGY AND ENVIRONMENT

ENERGY, 1996-2018 219-223

Cumulative Dissemination of Biogas, Solar, Improved Cookstove, IWM, M/PHPs, Total Cumulative Dissemination of Energy, and Electricity Facility

CLIMATE, 1970-2000 224-233

Average Temperature by Months, National Climate Change Impact Survey, 2016, Precipitation by Months, Power Stations 2017/18, Solar Radiation by Months, Water Vapor Pressure by Months, Transmission Line Loss and Wind Speed by Months, and Status of Electricity

EARTHQUAKES, 1994-2018 234-235

Earthquakes

13

INFRASTRUCTURE, COMMUNICATION AND TECHNOLOGY

ELECTRICITY SALES BY NEA 2017/18

GOVERNMENT TARGETS FOR ENERGY SECTOR 243

ACCESS TO INFRASTRUCTURE, 2014 244-247

Access to Transportation, Telecommunication and Internet Facility

15

ELECTION

HOUSE OF REPRESENTATIVES UNDER FPTP, 2017 254-259

Result of House of Representatives (HOR) Under First Past The Post (FPTP) by Gender

Result of House of Representatives (HOR) Under First Past The Post (FPTP) by Political Party

Result of House of Representatives (HOR) Under First Past The Post (FPTP) by Political Party and Gender

PROVINCE ASSEMBLY UNDER FPTP, 2017 260-265

Result of Province Assembly Under First Past The Post (FPTP) by Gender

Result of Province Assembly Under First Past The Post (FPTP) by Political Party

Result of Province Assembly Under First Past The Post (FPTP) by Political Party and Gender

LOCAL LEVEL ELECTION, 2017 266-277

Elected Female Representative

Elected Male Representative

Elected Mayors by Political Parties

Elected Deputy - Mayors by Political Parties

Elected Chairpersons by Political Parties

Elected Vice - Chairpersons by Political Parties

12

INDUSTRY

INDUSTRY REGISTRATION 2016/17 233

FOREIGN INVESTMENT INDUSTRIES, 2017/18 234-235

Total Number of Small Scale, Medium Scale,

Big Scale Industries,

Proposed Employment

REGISTERED INDUSTRY, 2017/18 236-241

Number of Establishments, Total Number of

Manufacturing Industries, Service, Tourism,

Agriculture and Forest, Energy Based, Mining,

Construction, Information, Broadcasting,

Communication Technology Industries Investment

by Classification, Proposed Employment,

Registration of Cottage and Small-scale Industry

14

LAW AND JUSTICE

PRISONERS, 2018 249-252

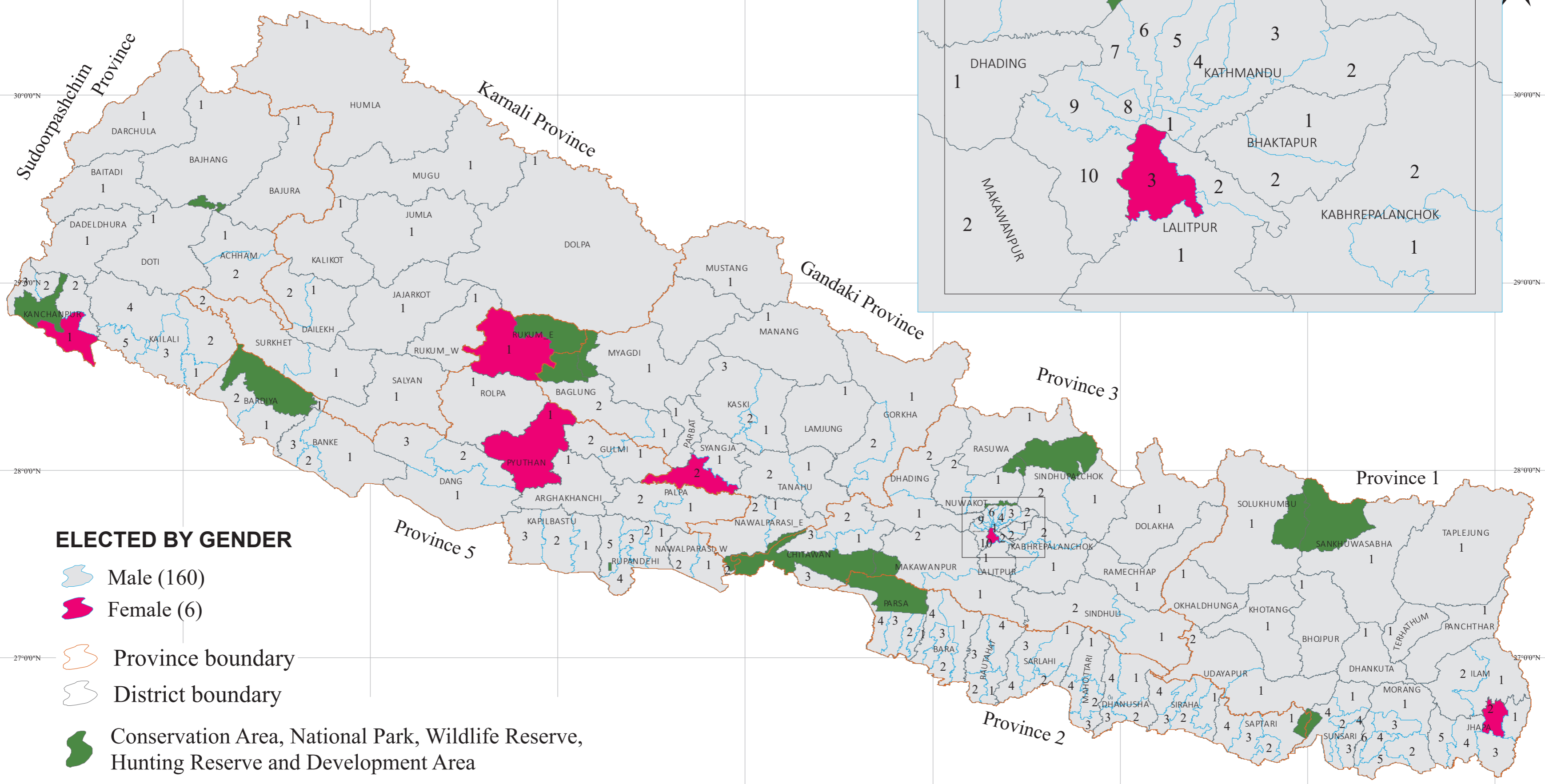
Number of Prisoners in Nepal, Crime Chart,

Trafficking in Persons in Nepal, Human Rights

Situations

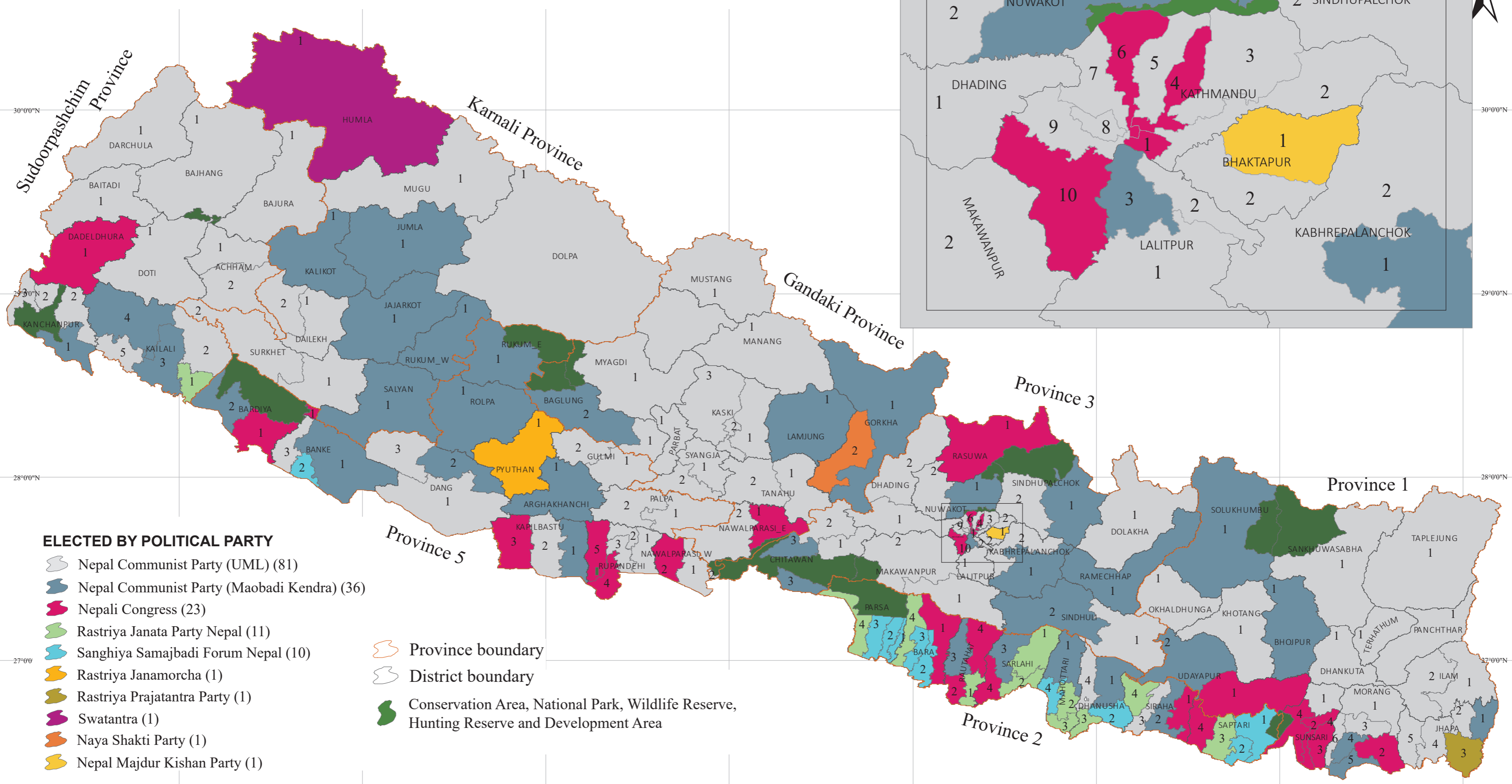
15 ELECTION

RESULT OF HOUSE OF REPRESENTATIVES (HOR) UNDER FIRST PAST THE POST (FPTP) BY GENDER



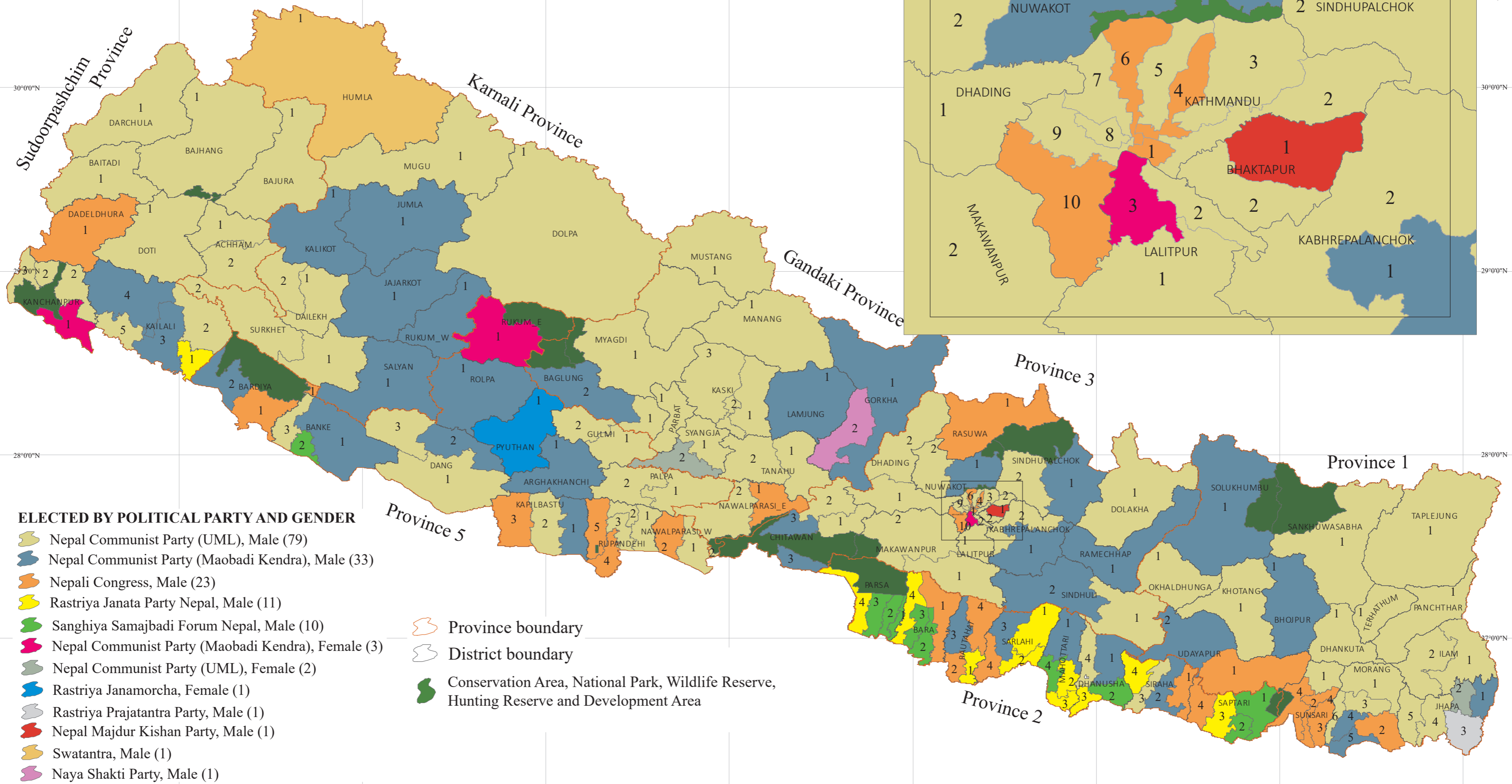
HOUSE OF REPRESENTATIVES UNDER FPTP, 2017

RESULT OF HOUSE OF REPRESENTATIVES (HOR) UNDER FIRST PAST THE POST (FPTP) BY POLITICAL PARTY



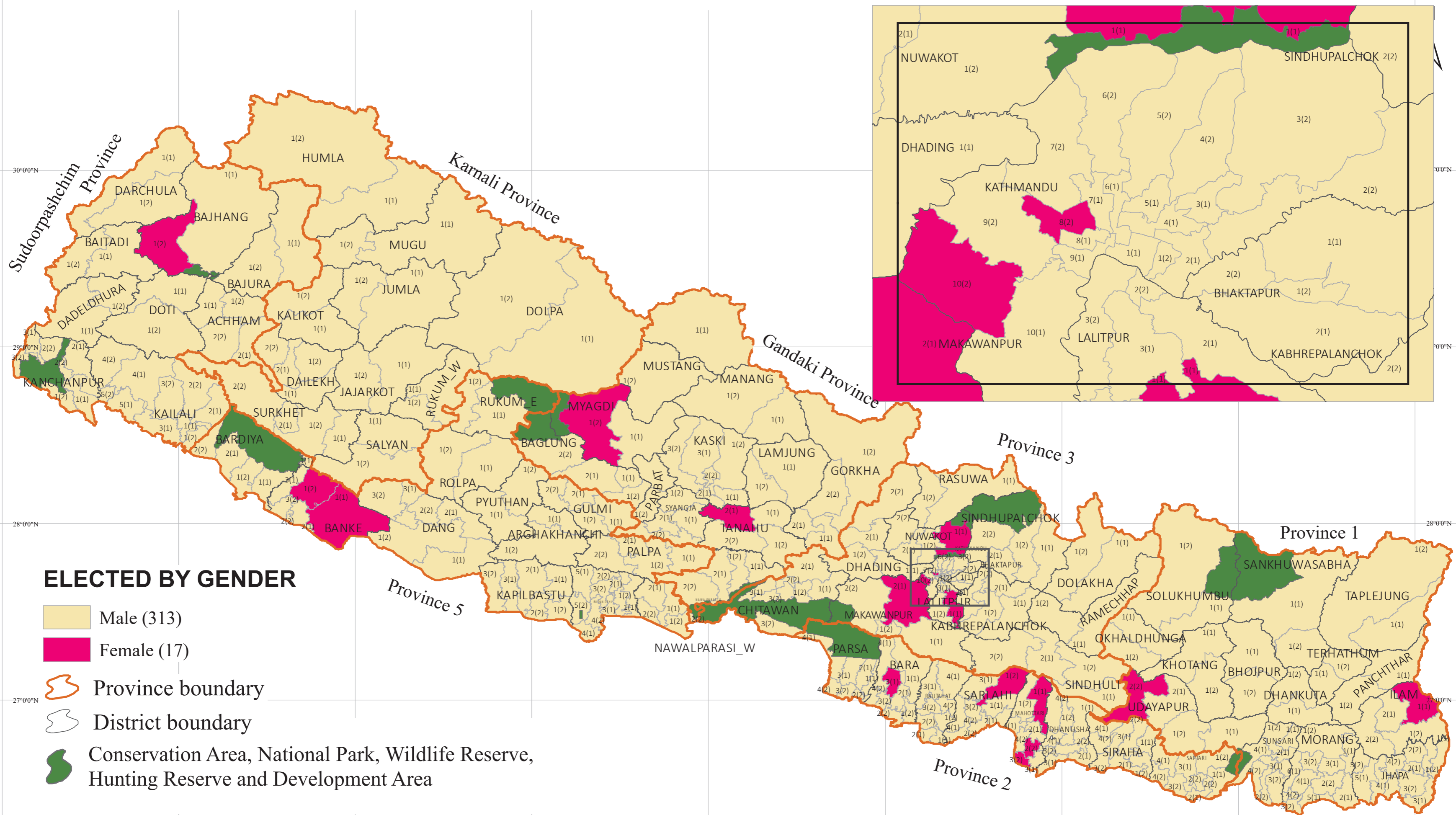
HOUSE OF REPRESENTATIVES UNDER FPTP, 2017

RESULT OF HOUSE OF REPRESENTATIVES (HOR) UNDER FIRST PAST THE POST (FPTP) BY POLITICAL PARTY AND GENDER



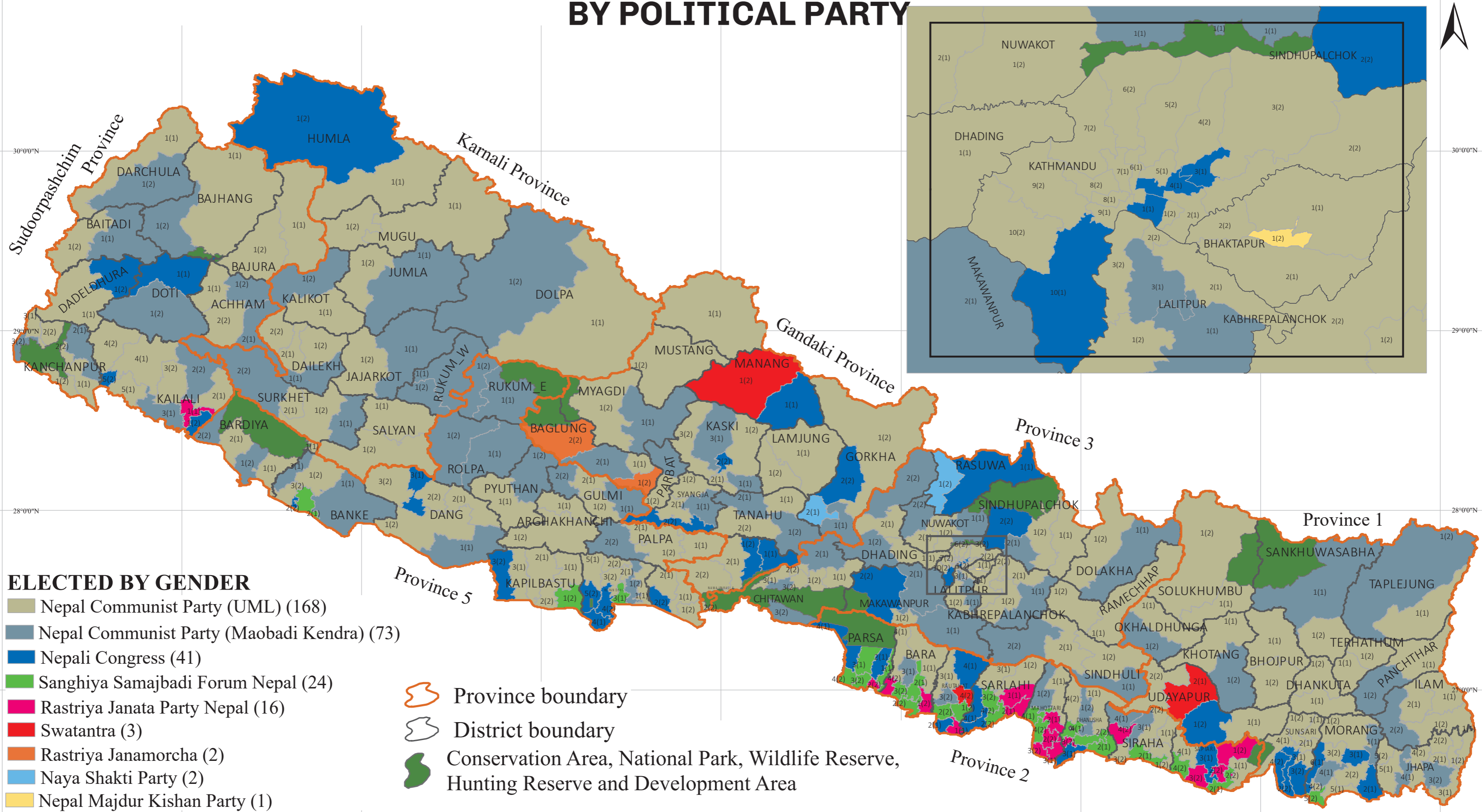
HOUSE OF REPRESENTATIVES UNDER FPTP, 2017

RESULT OF PROVINCE ASSEMBLY UNDER FIRST PAST THE POST (FPTP) BY GENDER



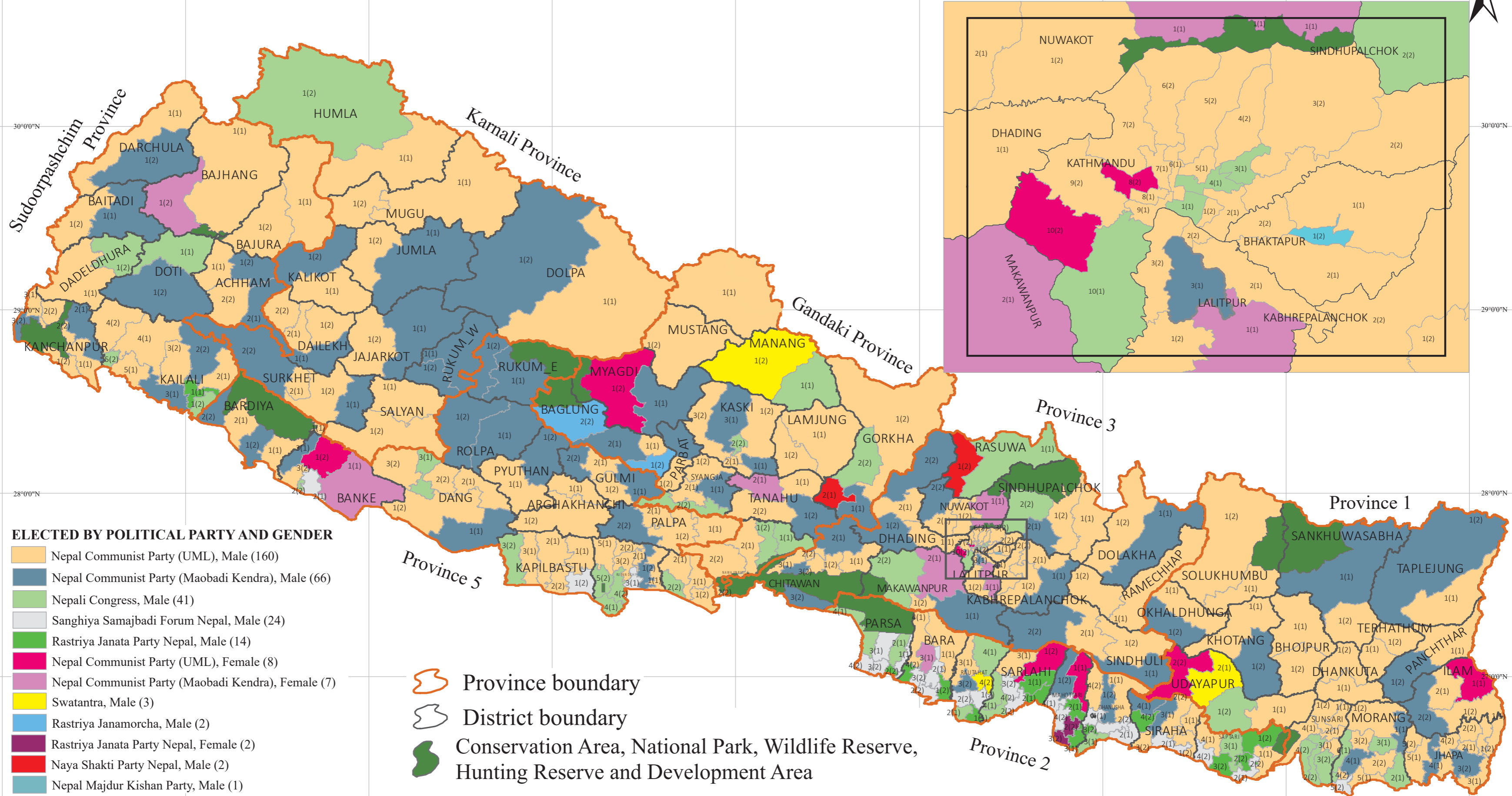
PROVINCE ASSEMBLY UNDER FPTP, 2017

RESULT OF PROVINCE ASSEMBLY UNDER FIRST PAST THE POST (FPTP) BY POLITICAL PARTY



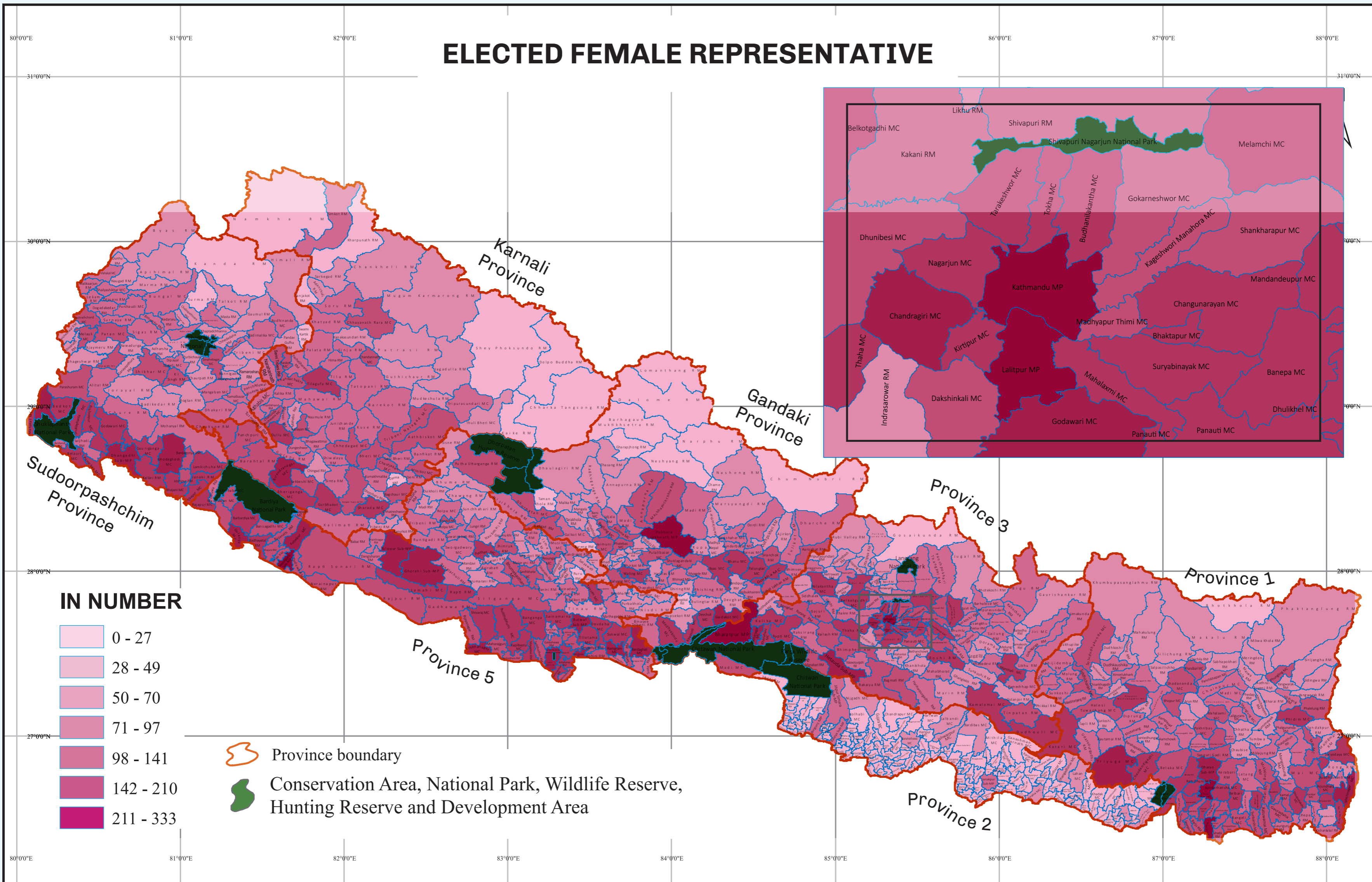
PROVINCE ASSEMBLY UNDER FPTP, 2017

RESULT OF PROVINCE ASSEMBLY UNDER FIRST PAST THE POST (FPTP) BY POLITICAL PARTY & GENDER



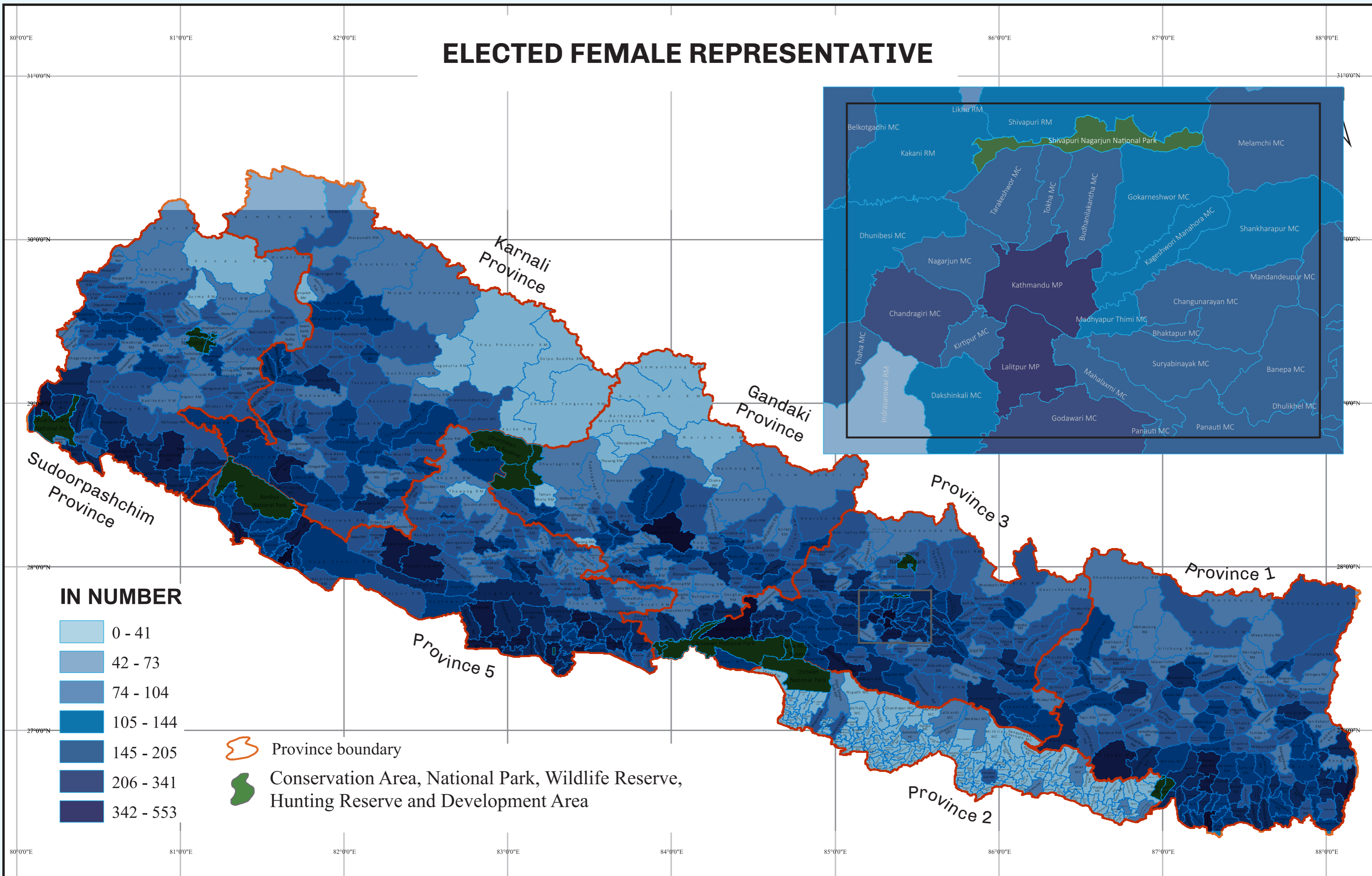
PROVINCE ASSEMBLY UNDER FPTP, 2017

ELECTED FEMALE REPRESENTATIVE



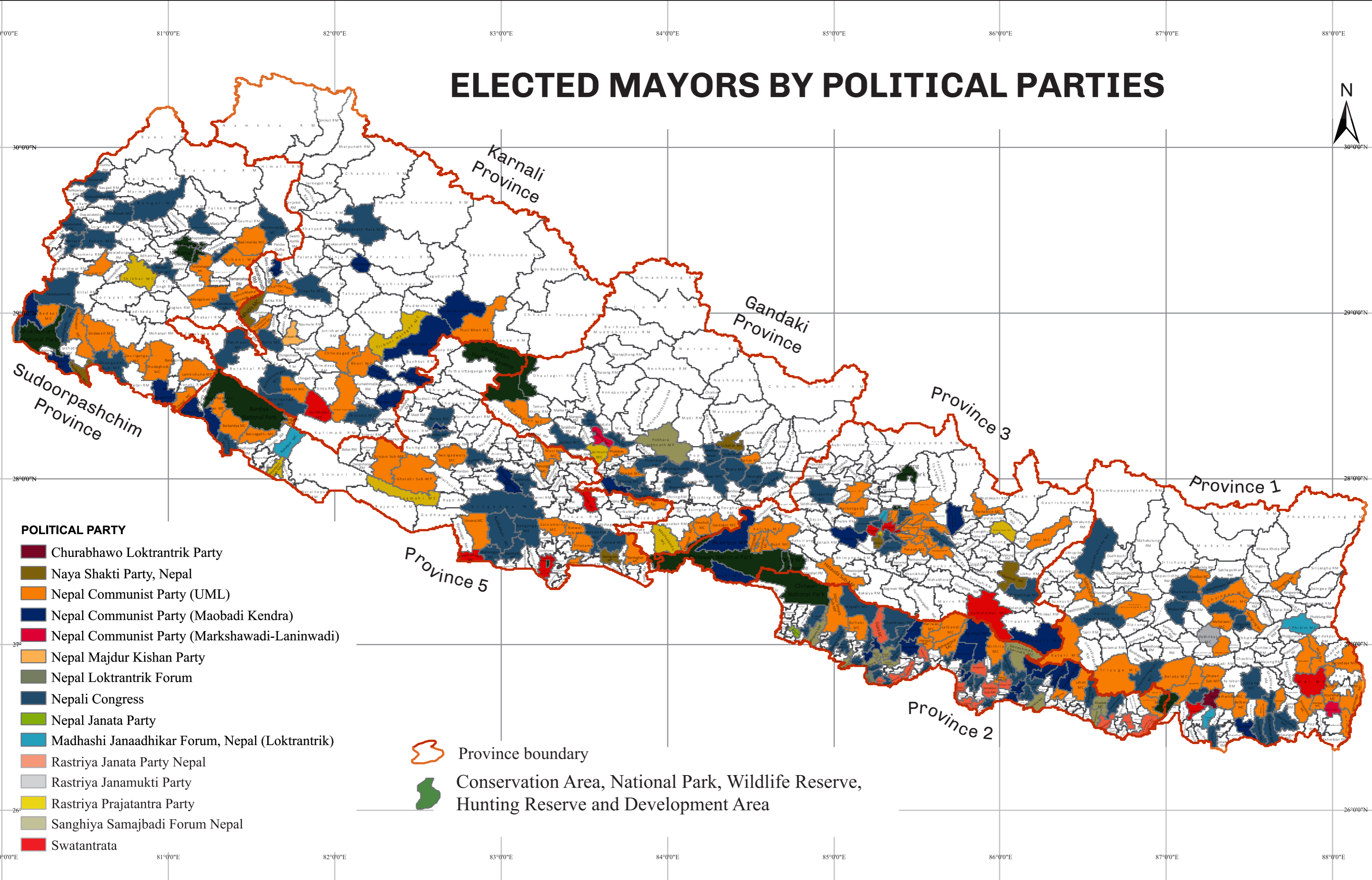
LOCAL LEVEL ELECTION, 2017

ELECTED FEMALE REPRESENTATIVE



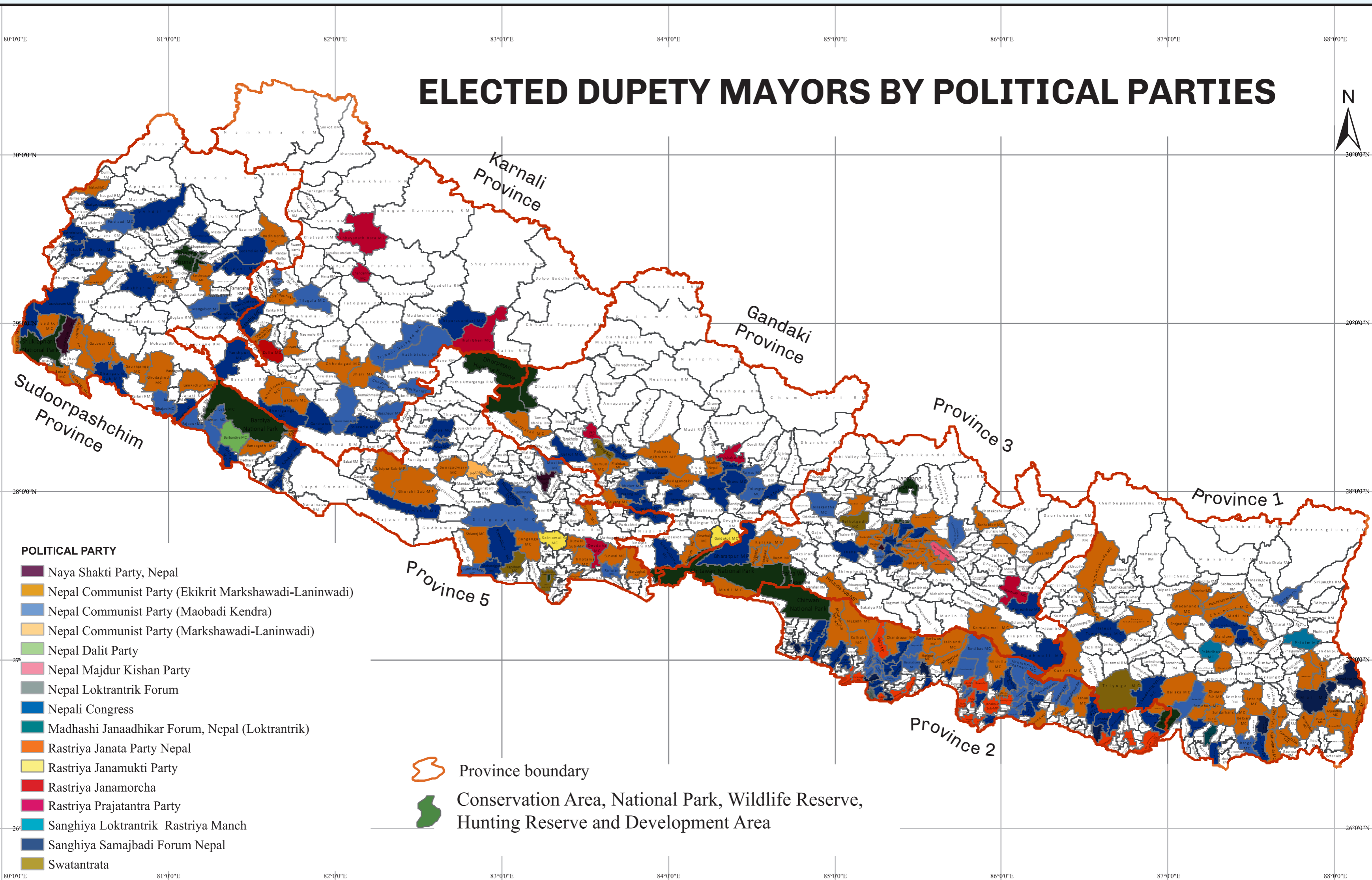
LOCAL LEVEL ELECTION, 2017

ELECTED MAYORS BY POLITICAL PARTIES



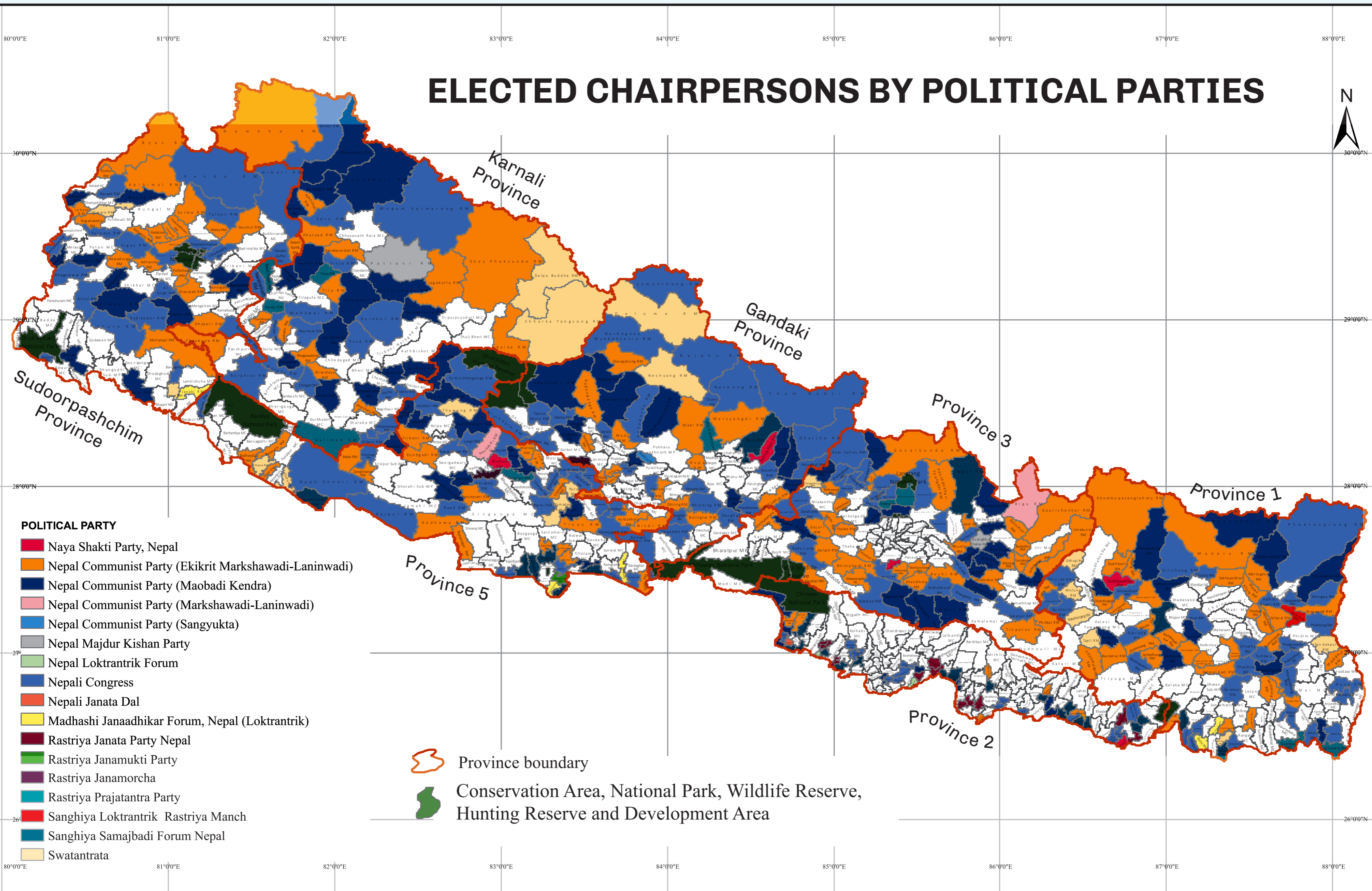
LOCAL LEVEL ELECTION, 2017

ELECTED DUPETY MAYORS BY POLITICAL PARTIES



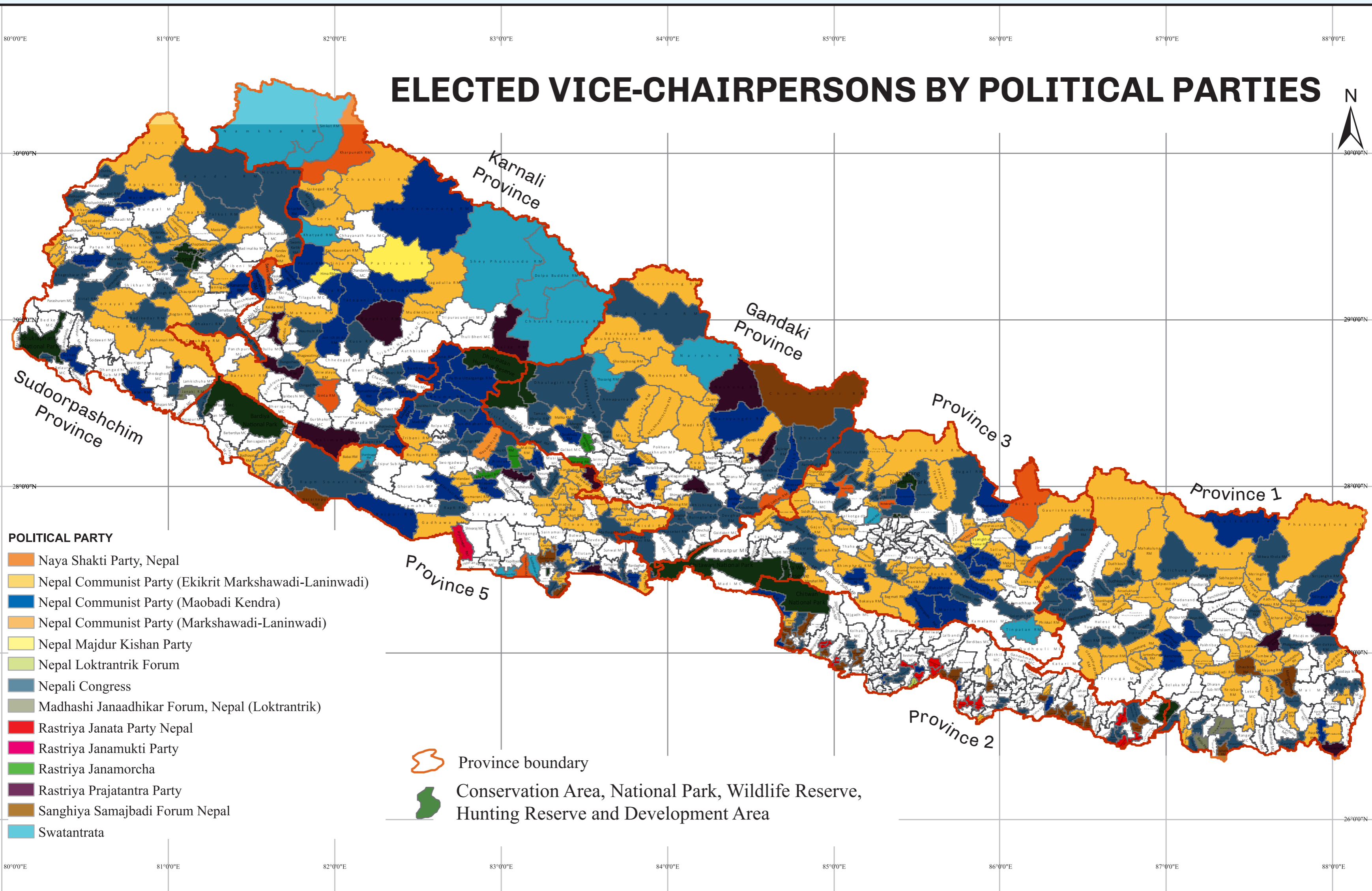
LOCAL LEVEL ELECTION, 2017

ELECTED CHAIRPERSONS BY POLITICAL PARTIES



LOCAL LEVEL ELECTION, 2017

ELECTED VICE-CHAIRPERSONS BY POLITICAL PARTIES



LOCAL LEVEL ELECTION, 2017

REFERENCES

01 Administration and Election

Survey Department. Retrieved from dos.gov.np, Google Earth

Electoral Constituency Delimitation Commission. (2017). District wise Constituency Map. Kathmandu, Nepal; Election Commission Nepal.

02 Physical Geography

Earth Explorer. Retrieved from <https://earthexplorer.usgs.gov/icimod.org>. The International Centre for Integrated Mountain Development (ICIMOD). Retrieved from <http://rds.icimod.org/Home/DataDetail?metadatald=1889>, and Soil Metadata Catalogue. Retrieved from <https://data.isric.org/geonetwork/srv/eng/catalog.search#/metadata/>

03 Demography

Central Bureau of Statistics. (2011). Province Summary Population Census 2011. Kathmandu, Nepal; Central Bureau of Statistics

04 Housing and Amenities

Central Bureau of Statistics. (2011). Province Summary Population Census 2011. Kathmandu, Nepal; Central Bureau of Statistics

05 Socio-economic Development

Ministry of Federal Affairs and General Administration. Retrieved from <http://mofaga.gov.np>, and National Natural Resources and Fiscal Commission. Retrieved from <https://www.nnrfc.gov.np/>

06 Education

Ministry of Education, Science and Technology. (2018). Nepal Education Figure 2017. Kathmandu, Nepal; Ministry of Education, Science and Technology

Ministry of Federal Affairs and General Administration. Retrieved from <http://mofaga.gov.np>

Central Bureau of Statistics. (2011). Province Summary Population Census 2011. Kathmandu, Nepal; Central Bureau of Statistics

07 Health

Department of ealth and Service. (2017). Glimpse of Annual Report 2016/17. Kathmandu, Nepal; Ministry of Health and Population

08 Labour and Employment

Ministry of Labour and Employment. (2018). Labour Migration for Employment. Kathmandu, Nepal; Ministry of Labour and Employment

Central Bureau of Statistics. (2019). National Economic Census- 2018, Province Report. Kathmandu, Nepal; Central Bureau of Statistics, and Central Bureau of Statistics. (2019). Report on the

Nepal Labour Force Survey, 2017/18. Kathmandu, Nepal; Central Bureau of Statistics.

Central Bureau of Statistics. (2019). Report on the Nepal Labour Force Survey, 2017/18. Kathmandu, Nepal; Central Bureau of Statistics.

09 Agriculture and and Land

Central Bureau of Statistics. (2011). Province Summary Population Census 2011. Kathmandu, Nepal. Central Bureau of Statistics

Ministry of Agriculture and Livestock. (2018). Statistical Information on Nepalese Agriculture 2016/17. Kathmandu, Nepal; Ministry of Agriculture and Livestock.

10 Economy, Market and Finance

Central Bureau of Statistics. (2019). National Accounts of Nepal- GDP, 2018/19. Kathmandu, Nepal; Central Bureau of Statistics.

Nepal Rastra Bank: emap (2019). Financial Inclusion Dashboard 2019. Kathmandu, Nepal; Nepal Rastra Bank

Ministry of Finance. (2019). Budget Speech, 2018/19. Kathmandu, Nepal; Ministry of Finance.

11 Energy and Environment

Alternative Energy Promotion Centre. Retrieved from <https://www.aepc.gov.np/statistic/>

World Climate Data-Version 2. Retrieved from <http://worldclim.org/version2>

National Seismological Centre. Retrieved from <https://www.seismonepal.gov.np/>

12 Industry

Ministry of Finance. (2018). Economic Survey 2017/18. Kathmandu, Nepal; Ministry of Finance.

13 Infrastructure, Communication and Technology

Ministry of Federal Affairs and General Administration. Retrieved from <http://mofaga.gov.np>

14 Law and Justice

National Human Right Commission - Nepal. Retrieved from <https://www.nhrcnepal.org/>, Informal Sector Service Center (INSEC). Retrieved from <https://www.insec.org.np/>, and Nepal Police.

Retrieved from <https://www.nepalpolice.gov.np/>

15 Election

Election Commission Nepal. Retrieved from <http://www.election.gov.np/election/np>



तथ्याङ्क संकलन, विश्लेषण तथा डिजाइन



विकास उद्यमीको पहल

नेपाल
इन
डाटा

विकास उद्यमी

सपनी मार्ग, चाकुपाट
ललितपुर, नेपाल

+९७७ ०१ ५२६१०९३

nepalindata@bikasudyami.com