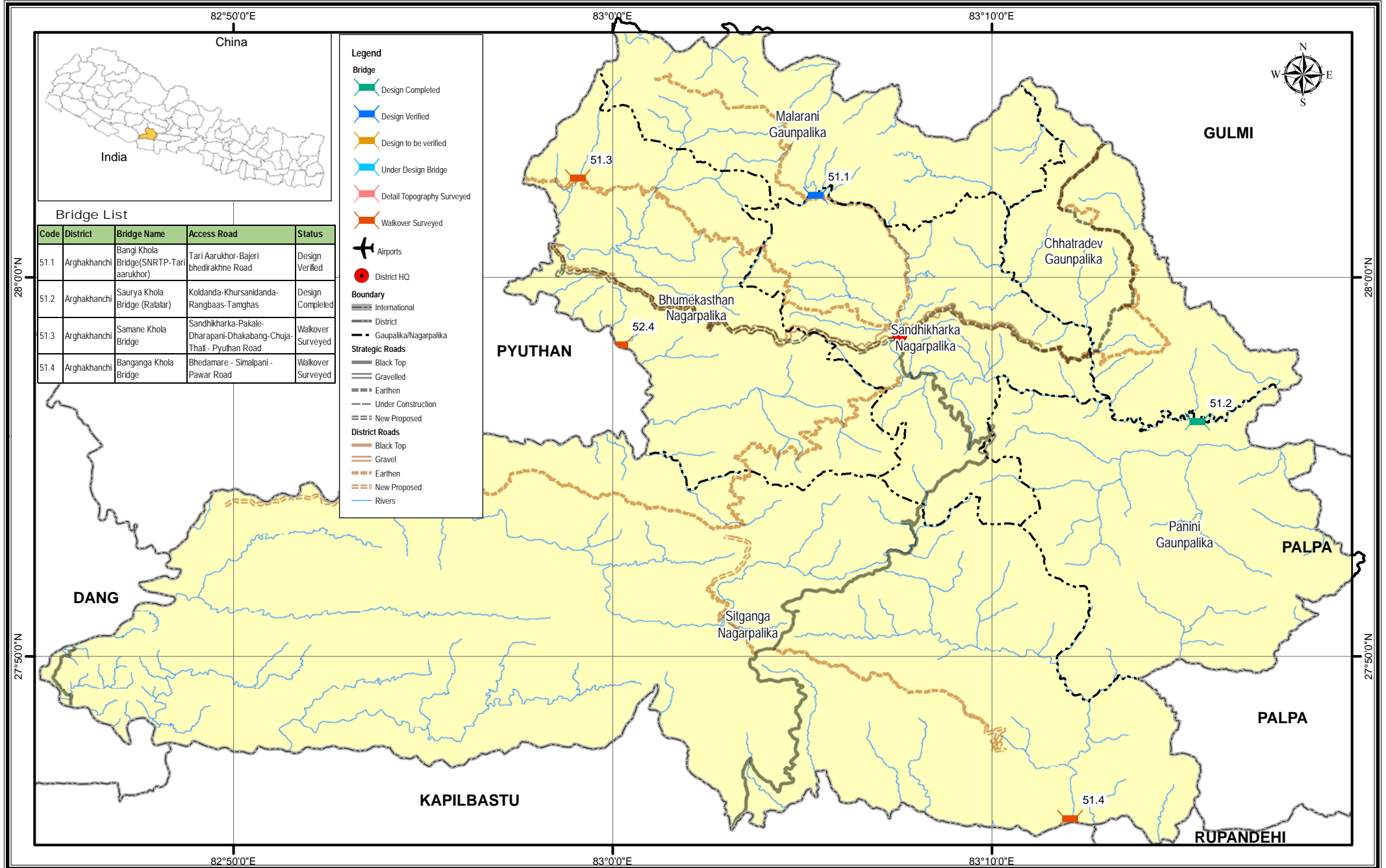


# Bridge Inventory Map

# Arghakhanchi District



**Legend**

**Bridge**

- Design Completed
- Design Verified
- Design to be verified
- Under Design Bridge
- Detail Topography Surveyed
- Walkover Surveyed

Airports

District HQ

**Boundary**

- International
- District
- Gaupalika/Nagarpalika

**Strategic Roads**

- Black Top
- Gravelled
- Earthen
- Under Construction
- New Proposed

**District Roads**

- Black Top
- Gravel
- Earthen
- New Proposed

Rivers

**Bridge List**

Code	District	Bridge Name	Access Road	Status
51.1	Arghakhanchi	Bangi Khola Bridge (SNRTP-Tari aarukhor)	Tari Aarukhor-Bajeri bhedirakhe Road	Design Verified
51.2	Arghakhanchi	Saurya Khola Bridge (Ralatar)	Koldanda-Khursanidanda-Rangbaas-Tamghas	Design Completed
51.3	Arghakhanchi	Samane Khola Bridge	Sandhikharka-Pakale-Dharapani-Dhakabang-Chuja-Thali - Pyuthan Road	Walkover Surveyed
51.4	Arghakhanchi	Banganga Khola Bridge	Bhedamare - Simalpani - Pawar Road	Walkover Surveyed

