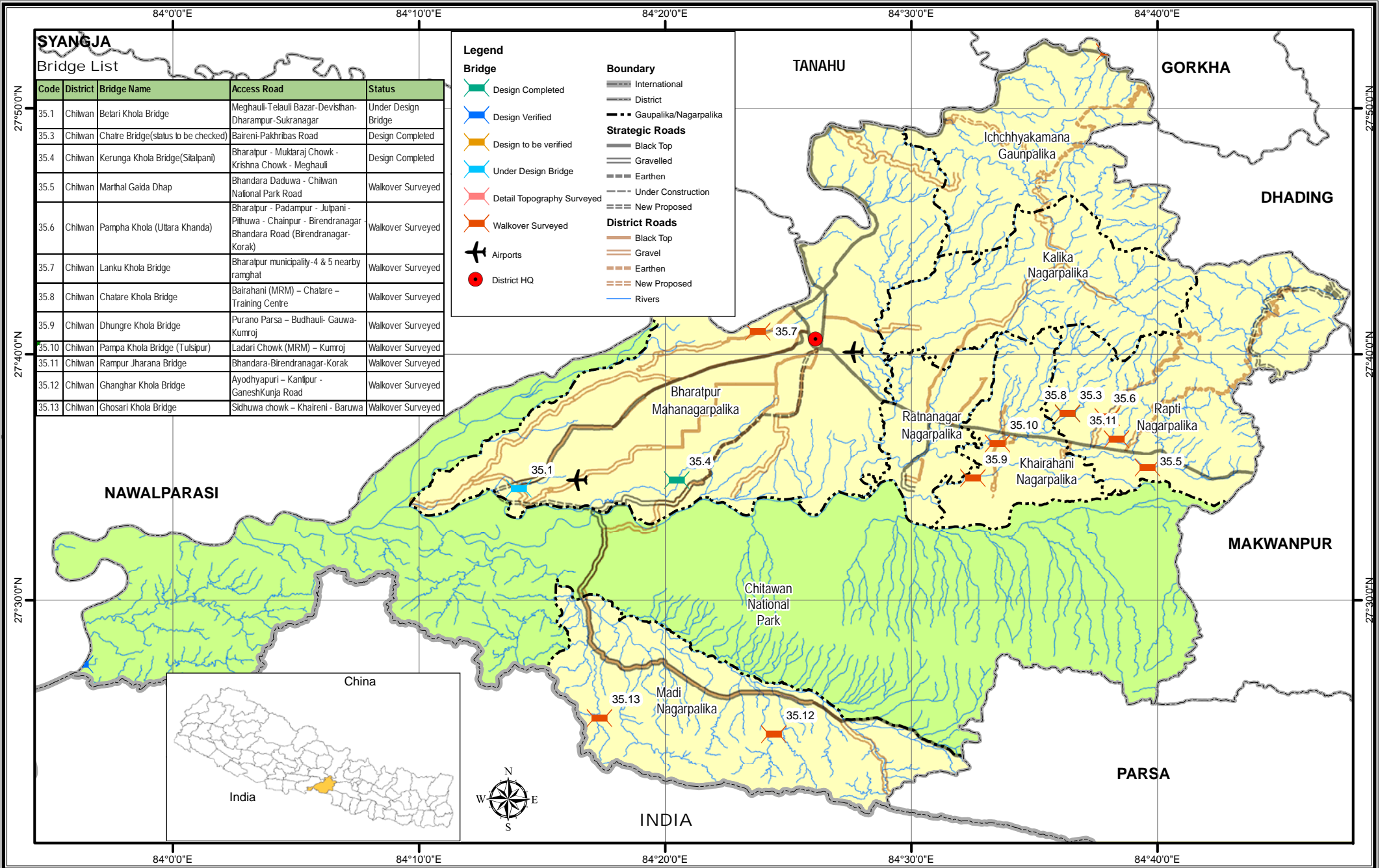


# Bridge Inventory Map

# Chitwan District



## SYANGJA

### Bridge List

| Code  | District | Bridge Name                         | Access Road   | Status              |
|-------|----------|-------------------------------------|---|---------------------|
| 35.1  | Chitwan  | Belari Khola Bridge                 | Meghauri-Telauli Bazar-Devasthan-Dharampur-Sukranagar   | Under Design Bridge |
| 35.3  | Chitwan  | Chatre Bridge(status to be checked) | Baireni-Pakhribas Road  | Design Completed    |
| 35.4  | Chitwan  | Kerunga Khola Bridge(Sitalpani)     | Bharatpur - Muktaraj Chowk - Krishna Chowk - Meghauri   | Design Completed    |
| 35.5  | Chitwan  | Marihal Gaida Dhap                  | Bhandara Daduwa - Chitwan National Park Road  | Walkover Surveyed   |
| 35.6  | Chitwan  | Pampha Khola (Uttara Khanda)        | Bharatpur - Padampur - Julpani - Pithuwa - Chainpur - Birendranagar - Bhandara Road (Birendranagar-Korak) | Walkover Surveyed   |
| 35.7  | Chitwan  | Lanku Khola Bridge                  | Bharatpur municipality-4 & 5 nearby ranghat   | Walkover Surveyed   |
| 35.8  | Chitwan  | Chalare Khola Bridge                | Bairahani (MRM) - Chalare - Training Centre   | Walkover Surveyed   |
| 35.9  | Chitwan  | Dhungre Khola Bridge                | Purano Parsa - Budhauri- Gauwa-Kumroj   | Walkover Surveyed   |
| 35.10 | Chitwan  | Pampa Khola Bridge (Tulsipur)       | Ladari Chowk (MRM) - Kumroj   | Walkover Surveyed   |
| 35.11 | Chitwan  | Rampur Jharana Bridge               | Bhandara-Birendranagar-Korak  | Walkover Surveyed   |
| 35.12 | Chitwan  | Ghanghar Khola Bridge               | Ayodhyapuri - Kantipur - GaneshKunja Road   | Walkover Surveyed   |
| 35.13 | Chitwan  | Ghosari Khola Bridge                | Sidhuwa chowk - Khaireni - Baruwa   | Walkover Surveyed   |

**Legend**

**Bridge**

- Design Completed
- Design Verified
- Design to be verified
- Under Design Bridge
- Detail Topography Surveyed
- Walkover Surveyed

**Boundary**

- International
- District
- Gaupalika/Nagarpalika

**Strategic Roads**

- Black Top
- Gravelled
- Earthen
- Under Construction
- New Proposed

**District Roads**

- Black Top
- Gravel
- Earthen
- New Proposed

**Other Symbols**

- Airports
- District HQ

