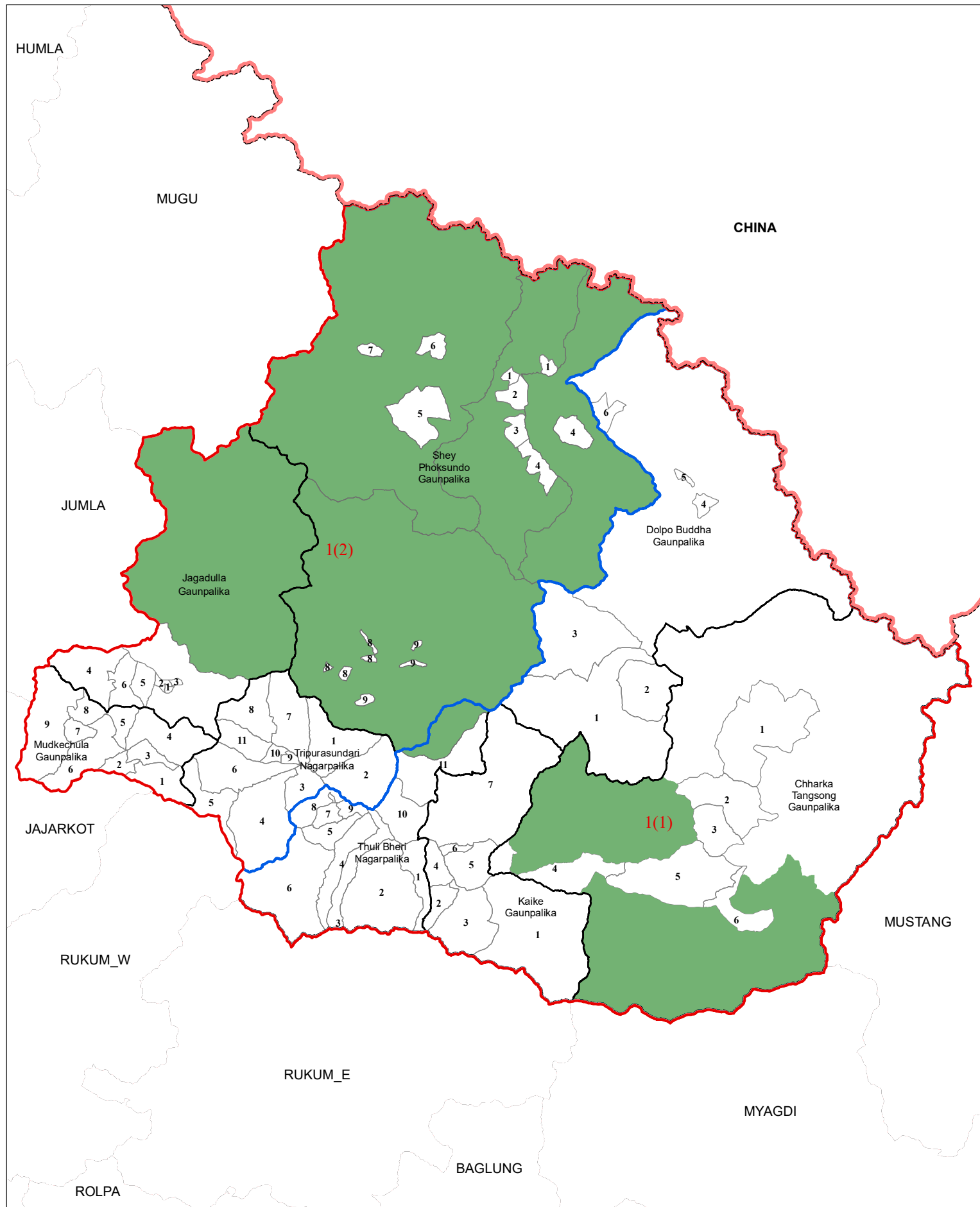


# DOLPA

No. of House of Representative Constituency: 1

No. of Provincial Constituency : 2



## Legend

- International Boundary
- Province Boundary
- District Boundary
- House of Representative Boundary
- Provincial Constituency Boundary
- Palika Boundary
- Ward Boundary
- Sanskritik Area
- National Park/Wildlife Reserve/Hunting Area/Watershed Area

Spatial Data Source : Survey Department  
Population Data Source : Population Census 2011, CBS  
Government of Nepal

### Note:

1 in 1(1) indicates House of Representative Constituency Number and (1) indicates Province Constituency Number within the House of Representative Constituency Number and likewise.

Prepared By : Electoral Constituency Delineation Commission (ECDC), 2074