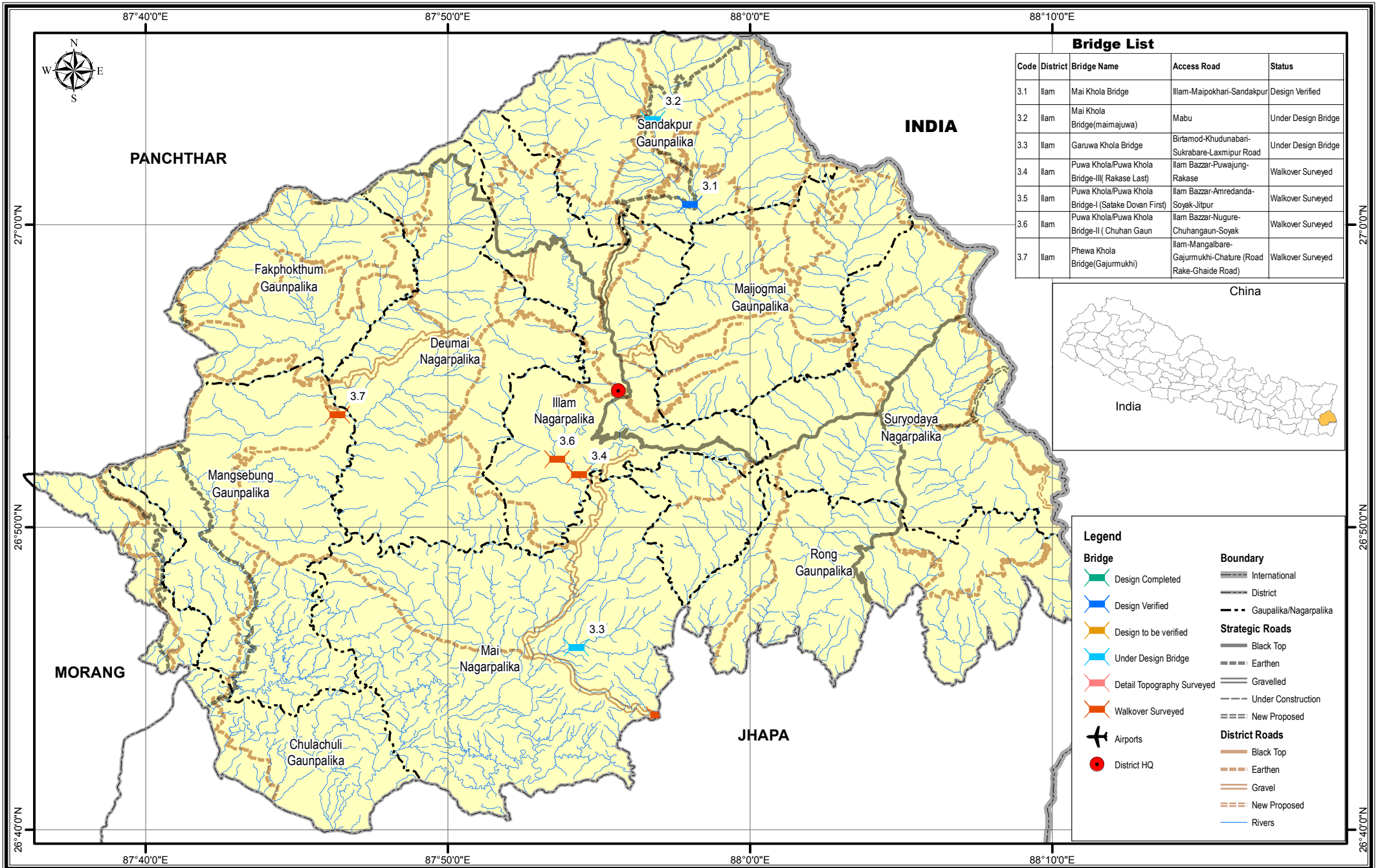


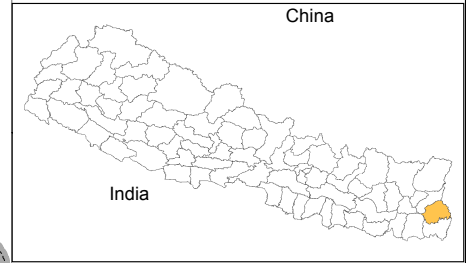
Bridge Inventory Map

Ilam District



Bridge List

Code	District	Bridge Name	Access Road	Status
3.1	Ilam	Mai Khola Bridge	Ilam-Maipokhari-Sandakpur	Design Verified
3.2	Ilam	Mai Khola Bridge(maimajuwa)	Mabu	Under Design Bridge
3.3	Ilam	Garuwa Khola Bridge	Birtamod-Khudunabari-Sukrabare-Laxmipur Road	Under Design Bridge
3.4	Ilam	Puwa Khola/Puwa Khola Bridge-III(Rakase Last)	Ilam Bazaar-Puwajung-Rakase	Walkover Surveyed
3.5	Ilam	Puwa Khola/Puwa Khola Bridge-I (Satake Dovan First)	Ilam Bazaar-Amredanda-Soyak-Jitpur	Walkover Surveyed
3.6	Ilam	Puwa Khola/Puwa Khola Bridge-II (Chuhan Gaun	Ilam Bazaar-Nugure-Chuhangaun-Soyak	Walkover Surveyed
3.7	Ilam	Phewa Khola Bridge(Gajumukhi)	Ilam-Mangalbare-Gajumukhi-Chature (Road Rake-Ghaide Road)	Walkover Surveyed



Legend

Design Completed	International Boundary
Design Verified	District Boundary
Design to be verified	Gaunpalika/Nagarpalika Boundary
Under Design Bridge	Strategic Roads - Black Top
Detail Topography Surveyed	Strategic Roads - Earthen
Walkover Surveyed	Strategic Roads - Gravelled
Airports	Strategic Roads - Under Construction
District HQ	Strategic Roads - New Proposed
	District Roads
	Black Top
	Earthen
	Gravel
	New Proposed
	Rivers

