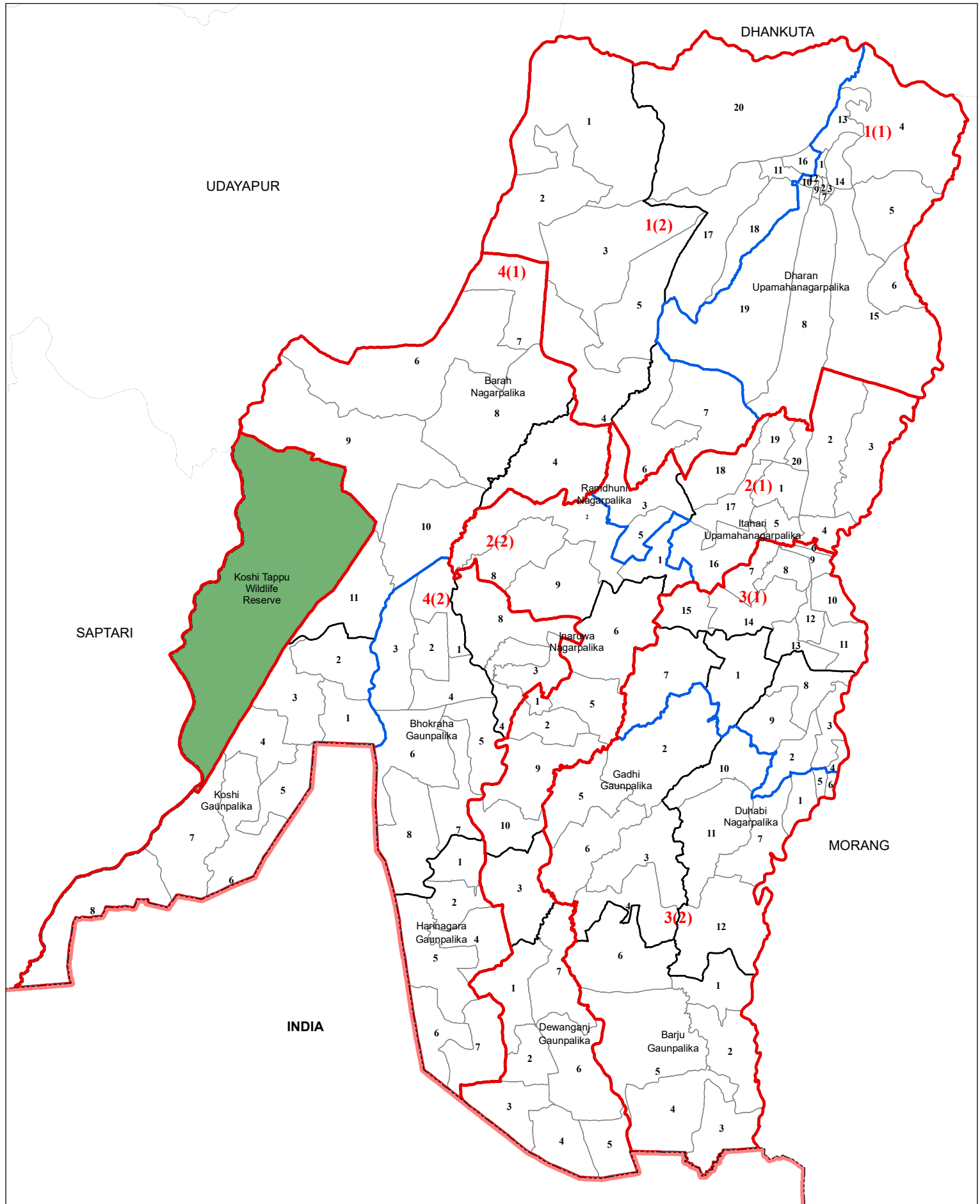


# SUNSARI

No. of House of Representative Constituency: 4

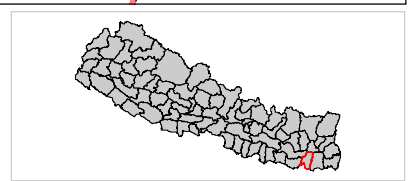
No. of Provincial Constituency : 8



**Legend**

- International Boundary
- Province Boundary
- District Boundary
- House of Representative Boundary
- Provincial Constituency Boundary
- Palika Boundary
- Ward Boundary
- Sanskritik Area
- National Park/Wildlife Reserve/Hunting Area/Watershed Area

0 2 4 8 12 16 Km



**Note:**  
**1** in **1(1)** indicates House of Representative Constituency Number and **(1)** indicates Province Constituency Number within the House of Representative Constituency Number and likewise.

Spatial Data Source : Survey Department  
 Population Data Source : Population Census 2011, CBS  
 Government of Nepal