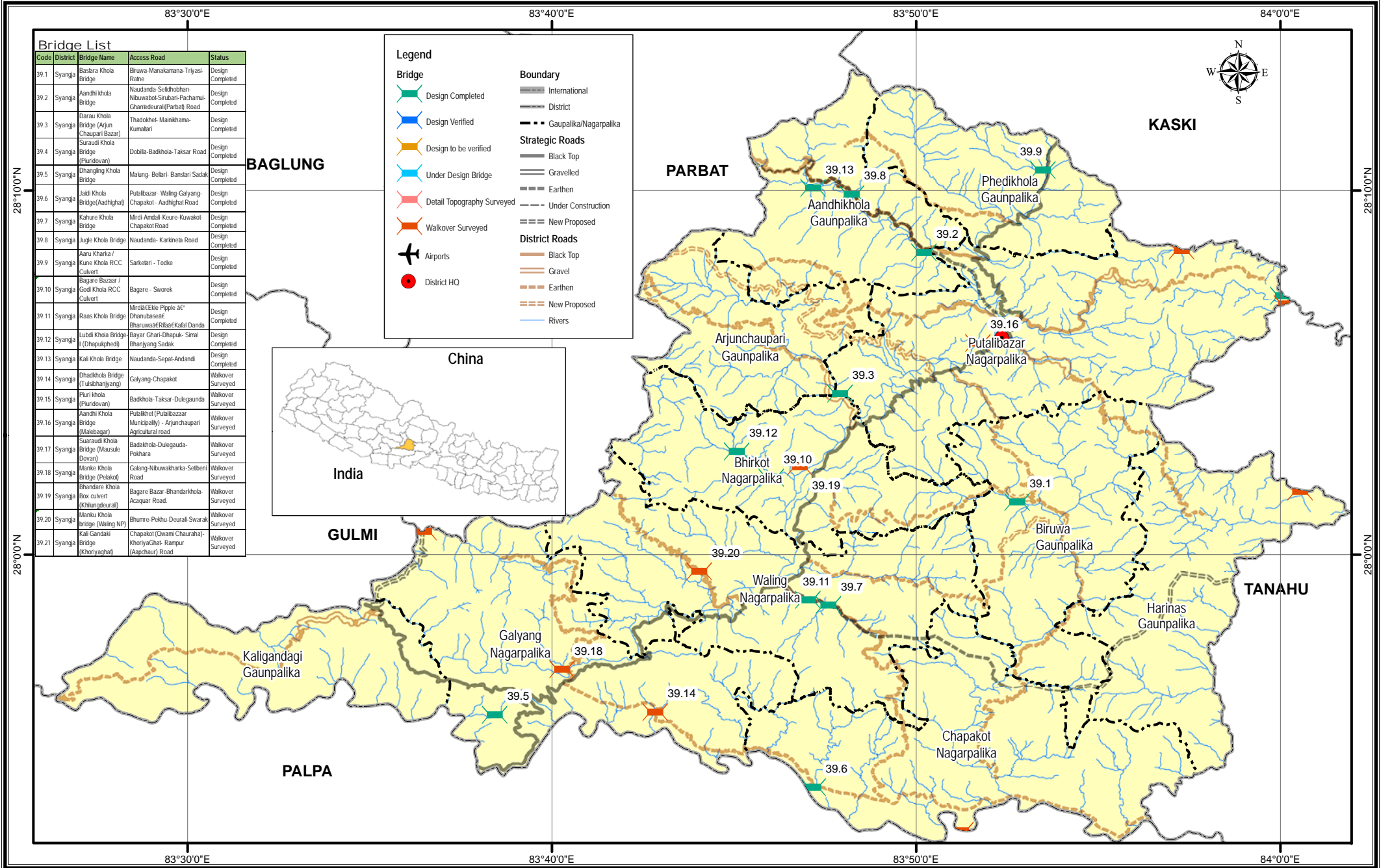


Bridge Inventory Map

Syangja District



| Bridge List | | | | |
|-------------|----------|--|---|-------------------|
| Code | District | Bridge Name | Access Road | Status |
| 39.1 | Syangja | Basara Khola Bridge | Birawa-Manakamana-Triyasi-Rahne | Design Completed |
| 39.2 | Syangja | Aandhi khola Bridge | Naudanda-Seldhobhan-Nibuwabol-Srubari-Pachamu-Chanteaurai(Parbati) Road | Design Completed |
| 39.3 | Syangja | Darau Khola Bridge (Ajjan Chausari Bazar) | Thadokhel- Mainkhama-Kumalari | Design Completed |
| 39.4 | Syangja | Suraudi Khola Bridge (Paundovan) | Dobilla-Badkhola-Taksar Road | Design Completed |
| 39.5 | Syangja | Dhangle Khola Bridge | Malung- Beltari- Bansari Sadak | Design Completed |
| 39.6 | Syangja | Jaidi Khola Bridge (Aadhigat) | Putalibazar- Waling-Galyang-Chapakot- Aadhigat Road | Design Completed |
| 39.7 | Syangja | Kahure Khola Bridge | Mirdi- Amdali- Koure- Kuwakot- Chapakot Road | Design Completed |
| 39.8 | Syangja | Jugle Khola Bridge | Naudanda- Karkheta Road | Design Completed |
| 39.9 | Syangja | Aaru Kharka / Kune Khola RCC Culvert | Sarkelari - Todke | Design Completed |
| 39.10 | Syangja | Bagare Bazaar / Godi Khola RCC Culvert | Bagare - Sworek | Design Completed |
| 39.11 | Syangja | Raas Khola Bridge | Mirdi-Ekko Pipple- ac-Dhanubaseac-Bharuwaat-Ribaac-Katal Danda | Design Completed |
| 39.12 | Syangja | Lubdi Khola Bridge (Dhapukheddi) | Bayar Ghari-Dhapuk- Simal-Bhanyang Sadak | Design Completed |
| 39.13 | Syangja | Kali Khola Bridge | Naudanda-Sepat-Andandi | Design Completed |
| 39.14 | Syangja | Dhadkhola Bridge (Tulabhanjyang) | Galyang-Chapakot | Walkover Surveyed |
| 39.15 | Syangja | Puri Khola (Paundovan) | Badkhola-Taksar-Dulegaunda | Walkover Surveyed |
| 39.16 | Syangja | Kandhi Khola Bridge (Malebazar) | Putalibhot (Putalibazar Municipality) - Arjunchaupari Agricultural road | Walkover Surveyed |
| 39.17 | Syangja | Suraudi Khola Bridge (Mausule Dovan) | Badkhola-Dulegaunda-Pokhara | Walkover Surveyed |
| 39.18 | Syangja | Manke Khola Bridge (Pelekut) | Galang-Nibuwakharka-Setbeni Road | Walkover Surveyed |
| 39.19 | Syangja | Bhandara Khola Box culvert (Khalunadurail) | Bagare Bazar-Bhandarkhola-Acaquar Road. | Walkover Surveyed |
| 39.20 | Syangja | Manku Khola bridge (Waling NP) | Bhumre-Pekhu-Dourali-Swarak | Walkover Surveyed |
| 39.21 | Syangja | Kali Gandaki Bridge (Khoriyaghat) | Chapakot (Dwami Chauraha)-Khoriyaghat-Rampur (Aapchaur) Road | Walkover Surveyed |

Legend

Bridge

- Design Completed
- Design Verified
- Design to be verified
- Under Design Bridge
- Detail Topography Surveyed
- Walkover Surveyed
- Airports
- District HQ

Boundary

- International
- District
- Gaupalika/Nagarpalika

Strategic Roads

- Black Top
- Gravelled
- Earthen
- Under Construction
- New Proposed

District Roads

- Black Top
- Gravel
- Earthen
- New Proposed

Rivers

