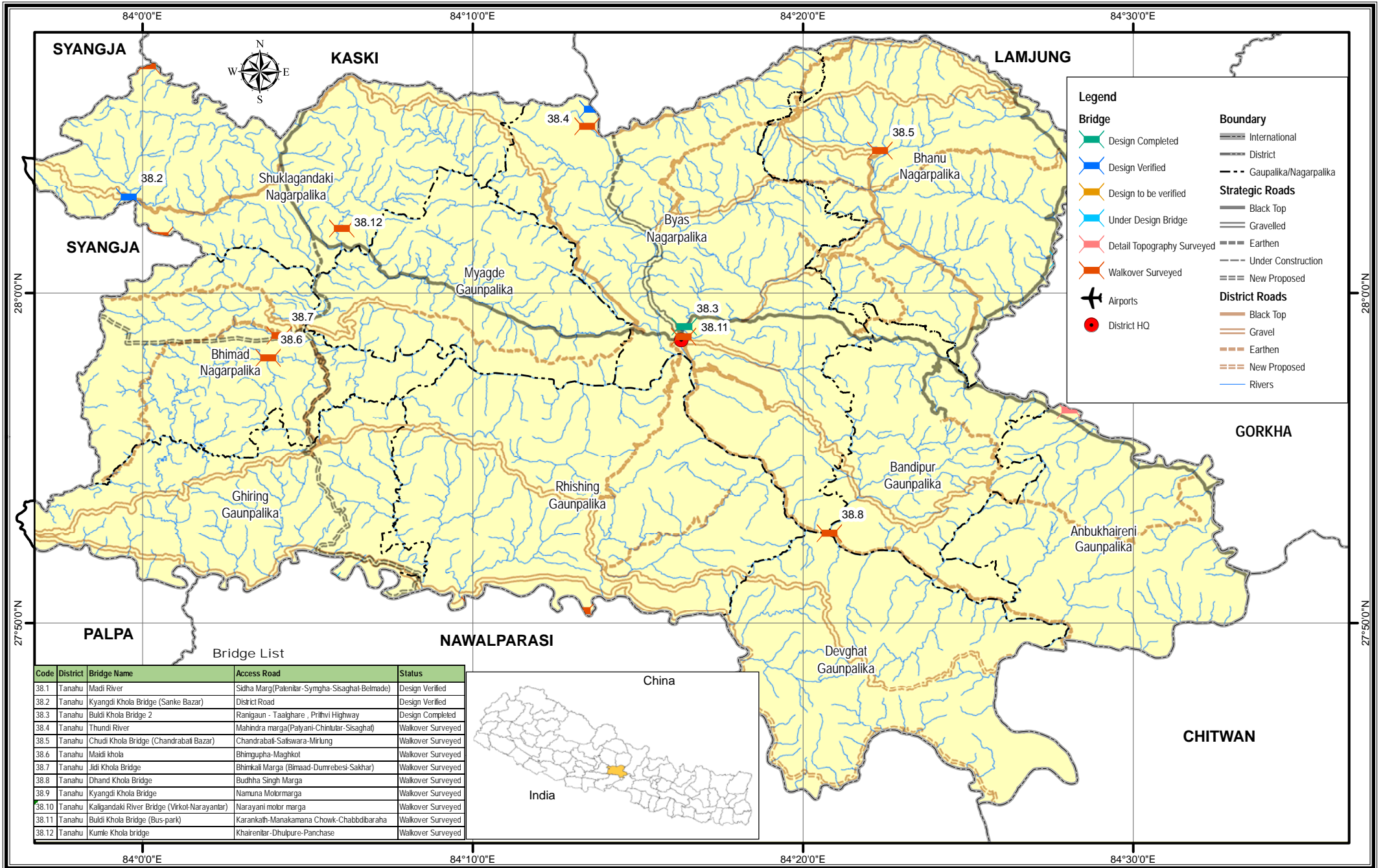


# Bridge Inventory Map

# Tanahu District



**Legend**

**Bridge**

- Design Completed
- Design Verified
- Design to be verified
- Under Design Bridge
- Detail Topography Surveyed
- Walkover Surveyed

**Boundary**

- International
- District
- Gaunpalika/Nagarpalika

**Strategic Roads**

- Black Top
- Gravelled
- Earthen
- Under Construction
- New Proposed

**District Roads**

- Black Top
- Gravel
- Earthen
- New Proposed
- Rivers

**Airports**

- Airports
- District HQ

Bridge List

Code	District	Bridge Name	Access Road	Status
38.1	Tanahu	Madi River	Sidha Marg (Patentir-Symgha-Sisaghat-Belmade)	Design Verified
38.2	Tanahu	Kyangdi Khola Bridge (Sanke Bazar)	District Road	Design Verified
38.3	Tanahu	Buldi Khola Bridge 2	Ranigaun - Taalghare , Prithvi Highway	Design Completed
38.4	Tanahu	Thundi River	Mahindra marga (Palyani-Chimlutar-Sisaghat)	Walkover Surveyed
38.5	Tanahu	Chudi Khola Bridge (Chandrabati Bazar)	Chandrabati-Salswara-Mirlung	Walkover Surveyed
38.6	Tanahu	Maldi khola	Bhimgupha-Maghot	Walkover Surveyed
38.7	Tanahu	Jidi Khola Bridge	Bhinkali Marga (Bimaad-Dumrebesi-Sakhar)	Walkover Surveyed
38.8	Tanahu	Dhand Khola Bridge	Budha Singh Marga	Walkover Surveyed
38.9	Tanahu	Kyangdi Khola Bridge	Namuna Motormarga	Walkover Surveyed
38.10	Tanahu	Kaligandaki River Bridge (Virkot-Narayantar)	Narayani motor marga	Walkover Surveyed
38.11	Tanahu	Buldi Khola Bridge (Bus-park)	Karankath-Manakamana Chowk-ChabdiBaraha	Walkover Surveyed
38.12	Tanahu	Kumle Khola bridge	Khairentar-Dhulpure-Panchase	Walkover Surveyed



Local Roads Bridge Support Unit (LRBSU)  
Manbhawan, Lalitpur

Date: 5/7/2018