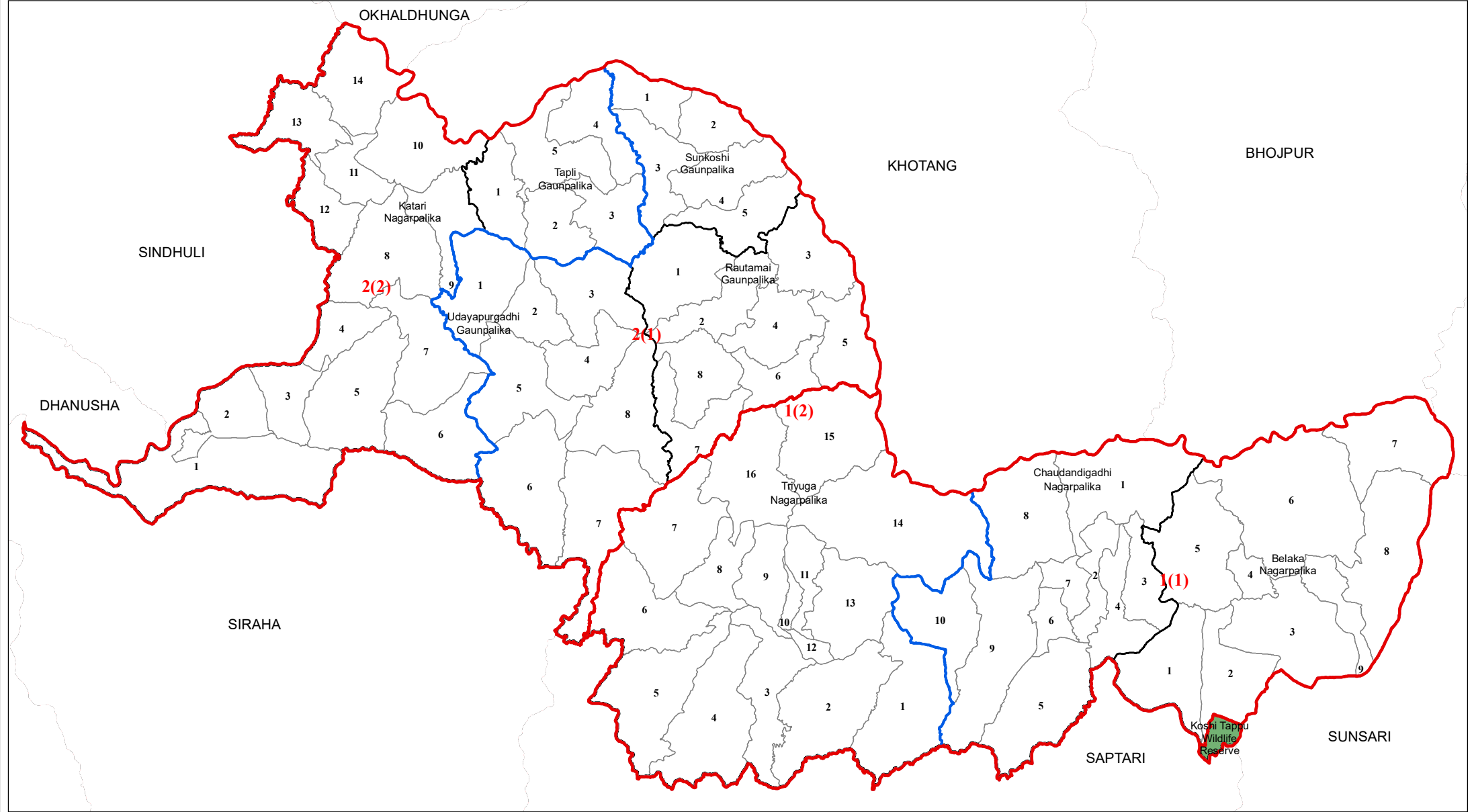


# UDAYAPUR

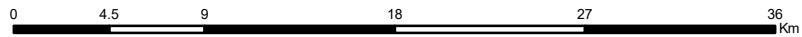
No. of House of Representative Constituency: 2

No. of Provincial Constituency : 4



## Legend

- International Boundary
- Province Boundary
- District Boundary
- House of Representative Boundary
- Provincial Constituency Boundary
- Palika Boundary
- Ward Boundary
- Sanskritik Area
- National Park/Wildlife Reserve/Hunting Area/Watershed Area



**Note:**  
**1 in 1(1)** indicates House of Representative Constituency Number and **(1)** indicates Province Constituency Number within the House of Representative Constituency Number and likewise.

Spatial Data Source : Survey Department  
 Population Data Source : Population Census 2011, CBS  
 Government of Nepal

